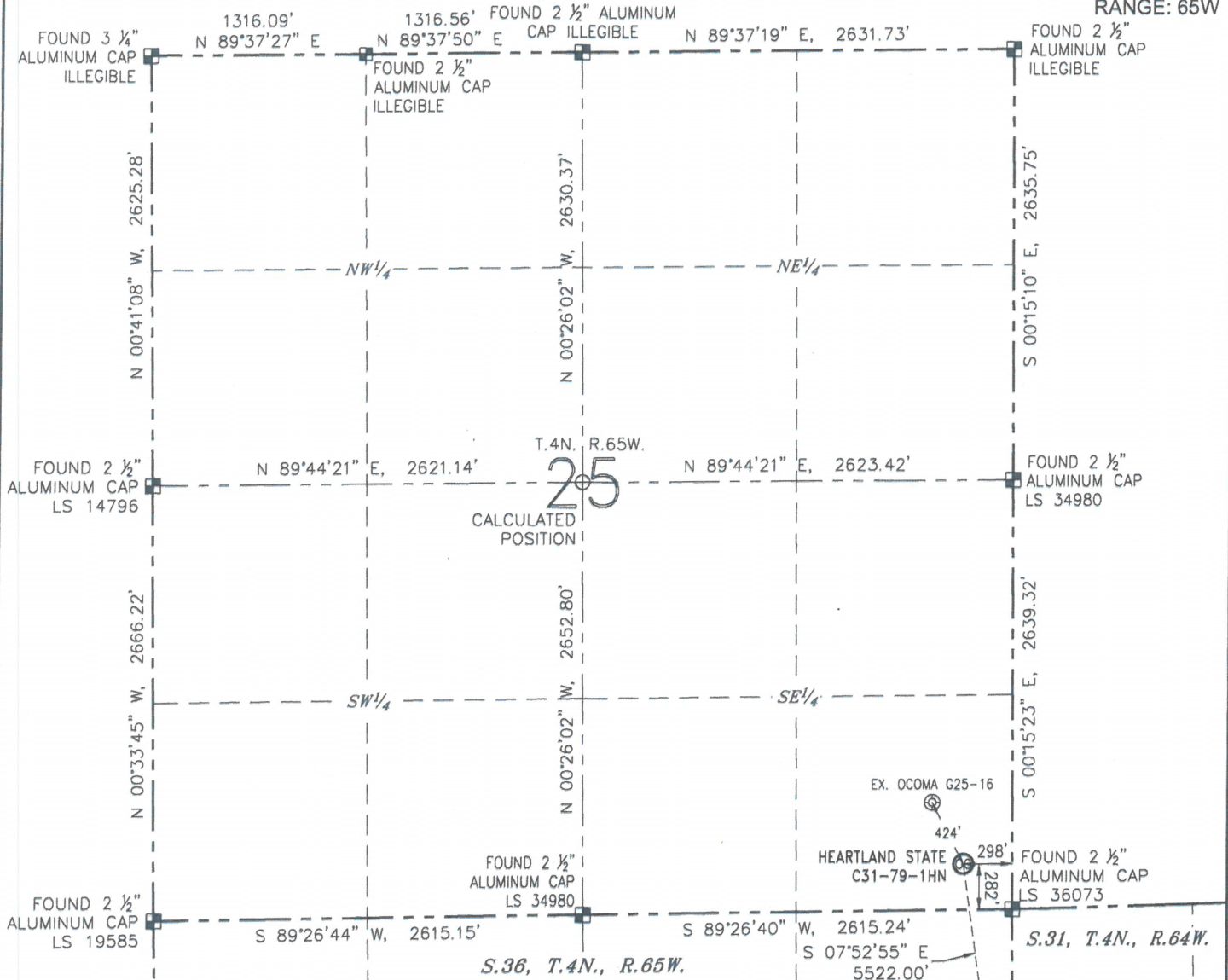


## WELL LOCATION CERTIFICATE

HEARTLAND STATE C31-79-1HN

(SHEET 1 OF 3)

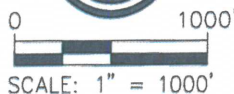
SECTION: 25  
TOWNSHIP: 4N  
RANGE: 65W

## NOTES:

1. BEARINGS ARE GRID BEARINGS OF THE COLORADO STATE PLANE COORDINATE SYSTEM, NORTH ZONE, NAD 83. THE LINEAL DIMENSIONS SHOWN HEREON ARE BASED UPON THE "U.S. SURVEY FOOT".
2. GROUND ELEVATIONS ARE BASED UPON NGS OPUS SOLUTION NAVD 88 DATUM COMPUTED USING GEOID09.
3. IMPROVEMENTS: SEE LOCATION DRAWING FOR ALL VISIBLE IMPROVEMENTS WITHIN 500' OF THE DISTURBED AREA.
4. SURFACE USE: RANGELAND.
5. INSTRUMENT OPERATOR: ANTONIO SMITH.
6. THE NEAREST EXISTING WELL: OCOMA G25-16, 424' NW.

## NEAREST CULTURAL ITEMS:

BUILDING:	1314' E
BUILDING UNIT:	1211' E
HIGH OCCUPANCY BUILDING UNIT:	5280'+
DESIGNATED OUTSIDE ACTIVITY AREA:	5280'+
PUBLIC ROAD (CR 49):	277' E
ABOVEGROUND UTILITY:	252' S
RAILROAD:	5280'+
PROPERTY LINE:	282' S



## LEGEND

- |                 |                  |                       |
|-----------------|------------------|-----------------------|
| ⊗ PROPOSED WELL | ⊙ BOTTOM HOLE    | ○ CALCULATED POSITION |
| ⊕ EXISTING WELL | ⊞ FOUND MONUMENT |                       |

## SURFACE HOLE LOCATION

LATITUDE: N 40.27673°  
 LONGITUDE: W 104.60340°  
 PDOP: 1.6  
 ELEVATION: 4845'  
 1/4-1/4: SE 1/4 SE 1/4

## BOTTOM HOLE LOCATION

LATITUDE: N 40.26170°  
 LONGITUDE: W 104.60089°

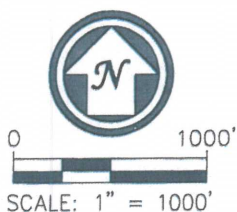
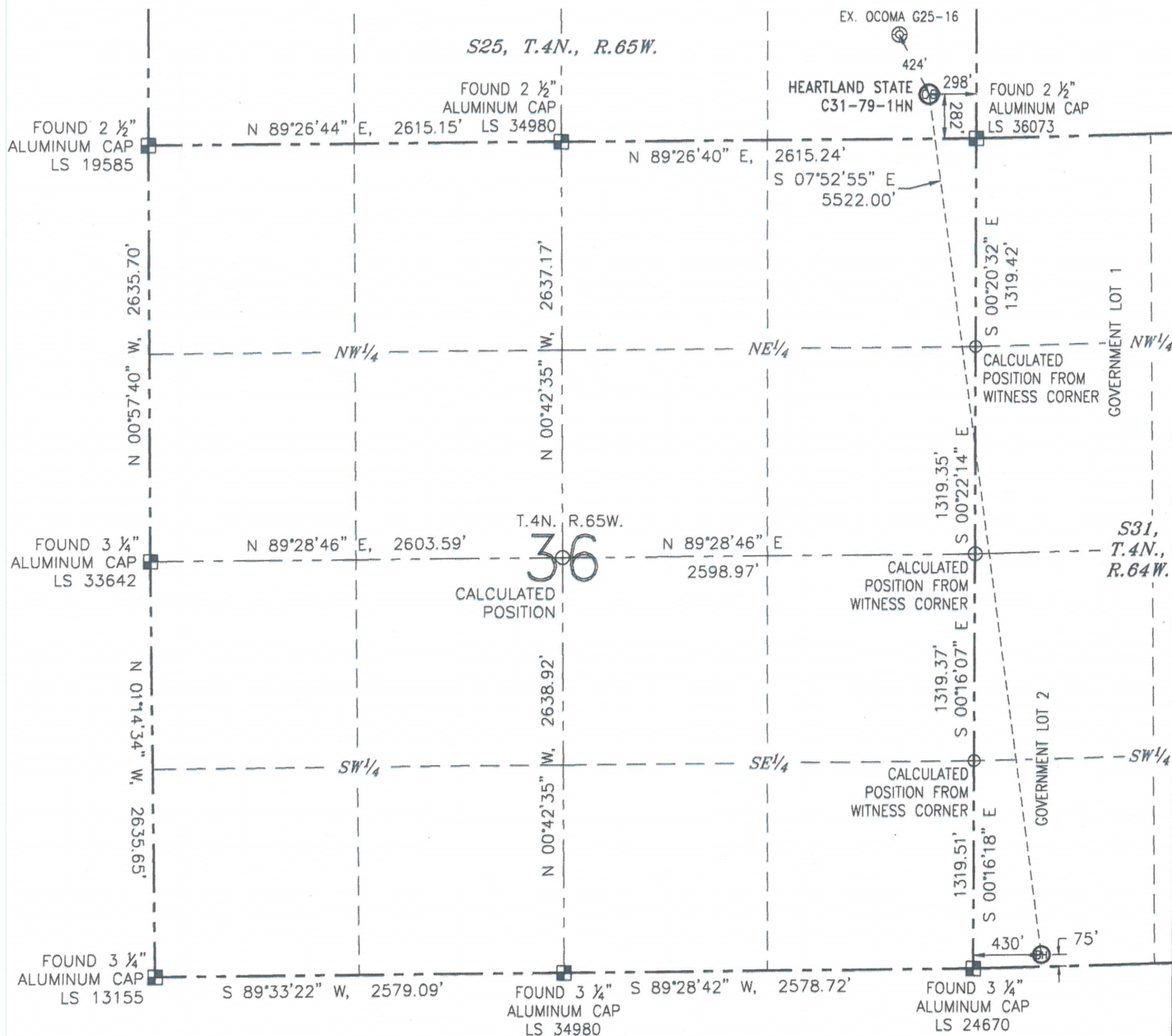


ANTONIO W. SMITH, PLS 38320  
 FOR AND ON BEHALF OF R&R ENGINEERS-SURVEYORS, INC. DATE: 01/13/2014  
 JOB NO.: NE13301

# WELL LOCATION CERTIFICATE

HEARTLAND STATE C31-79-1HN  
(SHEET 2 OF 3)

SECTION: 25  
TOWNSHIP: 4N  
RANGE: 65W



## LEGEND

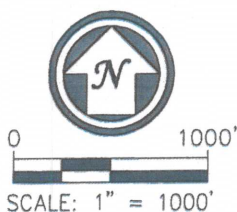
- ⊗ PROPOSED WELL
- ⊙ EXISTING WELL
- FOUND MONUMENT
- CALCULATED POSITION







ANTONIO W. SMITH, PLS 38320  
FOR AND ON BEHALF OF R&R ENGINEERS-SURVEYORS, INC. DATE: 01/13/2014  
JOB NO.: NE13301

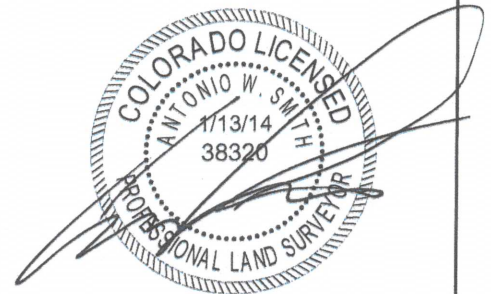


SECTION: 25  
TOWNSHIP: 4N  
RANGE: 65W



### LEGEND

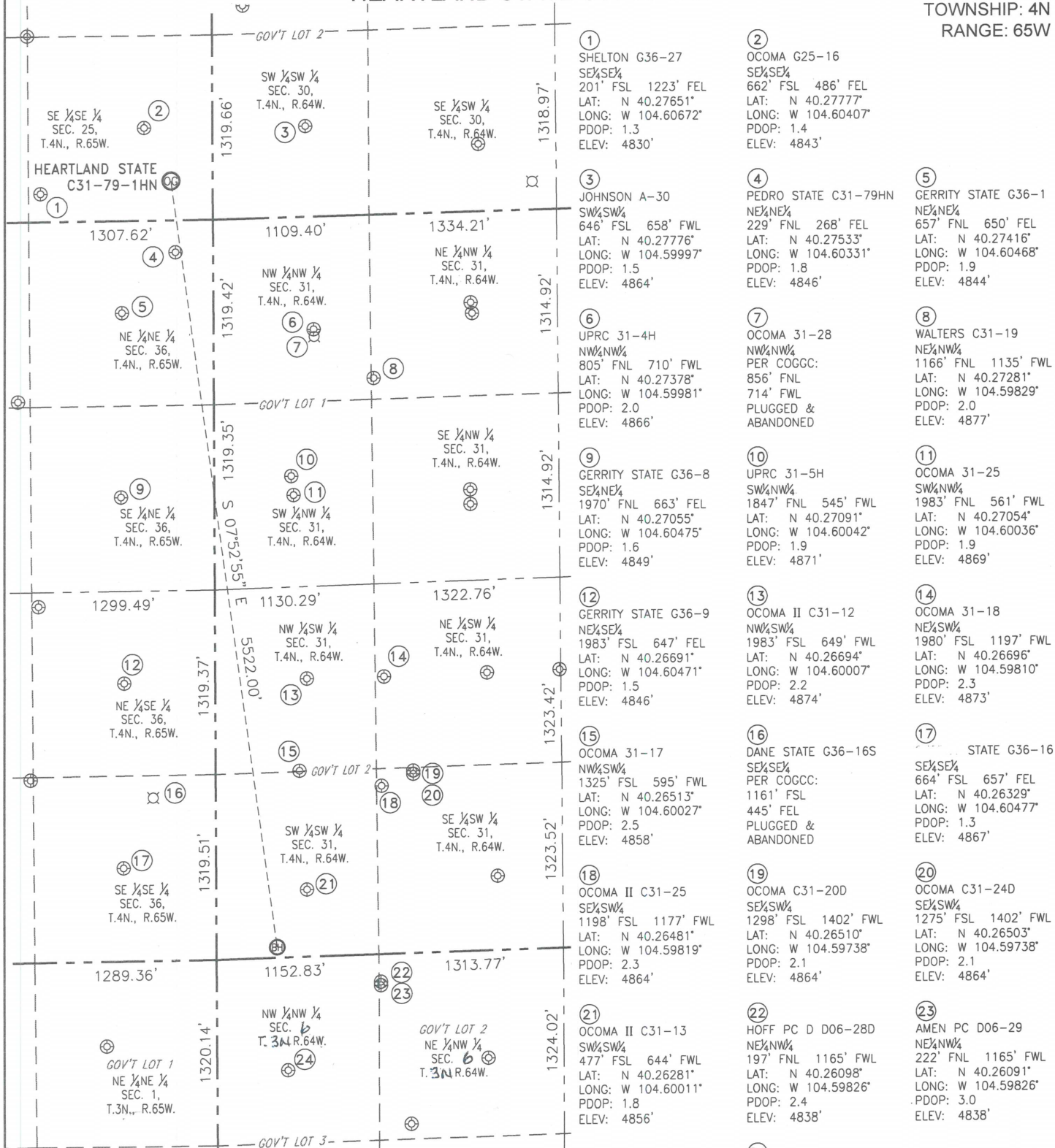
-  PROPOSED WELL  
 EXISTING WELL  
 FOUND MONUMENT  
 CALCULATED POSITION



ANTONIO W. SMITH, PLS 38320  
FOR AND ON BEHALF OF R&R DATE: 01/13/2014  
ENGINEERS-SURVEYORS, INC. JOB NO.: NE13301

# SITE SKETCH HEARTLAND STATE C31-79-1HN

SECTION: 25  
TOWNSHIP: 4N  
RANGE: 65W

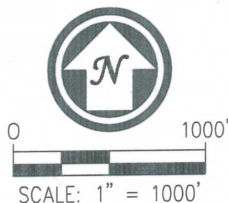


## NOTES:

1. THIS SKETCH DOES NOT REPRESENT A BOUNDARY SURVEY.
2. HORIZONTAL DATUM IS NAD 83.
3. VERTICAL DATUM IS NAVD 88.

## LEGEND

- ⊕ PROPOSED WELL ⊕ BOTTOM HOLE  
⊙ EXISTING WELL ⊙ ABANDONED WELL



24  
FARAMIR FARMS 06-22  
NW 1/4 NW 1/4  
806' FSL 502' FWL  
LAT: N 40.25928"  
LONG: W 104.60064"  
PDOP: 3.3  
ELEV: 4861'

DATE: 01/13/2014  
JOB NO.: NE13301