

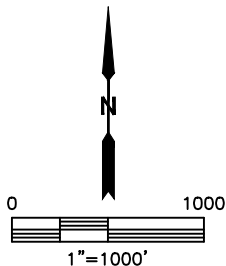
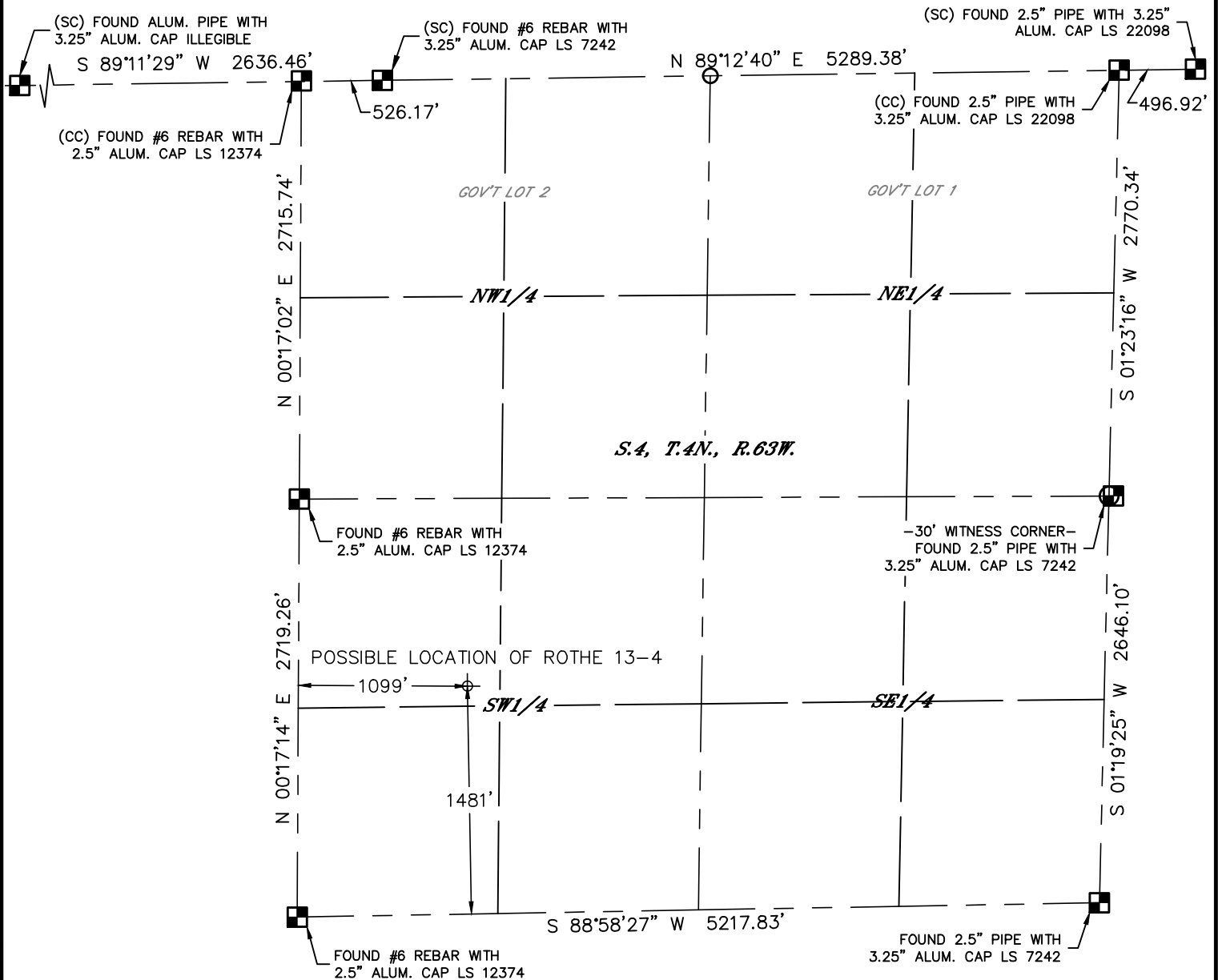


Lat40°, Inc. 1635 Foxtrail Drive, Suite 325 Loveland, CO 970-776-3321

DRILLED & ABANDONED WELL EXHIBIT

THIS MAP DOES NOT REPRESENT A BOUNDARY SURVEY

SECTION: 4
TOWNSHIP: 4N
RANGE: 63W





SURFACE LOCATION

LAT: 40.33786°N
LONG: 104.44856°W
PDOP: 2.2
ELEV: 4630'
1/4,1/4: NW1/4SW1/4

SURFACE DESCRIPTION

FOUND 2' DIAMETER GROUT CAP BELOW GRADE,
APPROXIMATELY 175' NORTHWEST OF A CENTER PIVOT.
LARGE CLOUDS OF BLACK DIRT AND STRONG PETROLEUM
ODOR IN AREA. SET T-POST & LATH WITH FLAGGING

LEGEND

-  = ALIQUOT MONUMENT AS DESCRIBED
-  = CALCULATED POSITION

DATE: 3/31/2014
PROJECT#: 2013173



Lat40°, Inc. 1635 Foxtrail Drive, Suite 325 Loveland, CO 970-776-3321

D&A WELL LOCATION PICTURES

ROTHE 13-4

SECTION: 4
TOWNSHIP: 4N
RANGE: 63W

DATE: 4/4/2014



VIEW NORTH



VIEW WEST



VIEW EAST



VIEW SOUTH

DATE: 4/18/2014
PROJECT#: 2013173