



Chevron
U.S.A., Inc.

WELL NO.: EMERALD 14
(2229)
FIELD : RANGELY, CO.

SURVEY DATA

RUN NO. 22

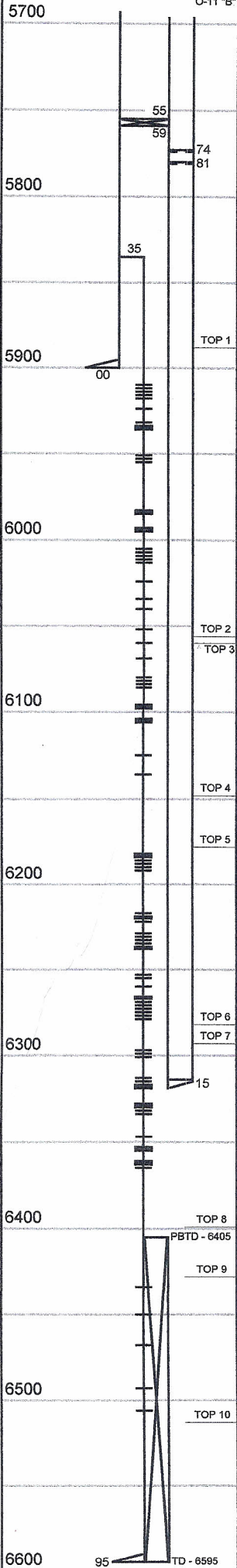
SURVEY TYPE : T-S-T
DATE : 3/24/2014
METERED RATE : 400 B/D
MEASURED RATE: 537 B/D
DESIRED RATE : N/A
SERVICE CO. : PLS
SURFACE TEMP : 105.4 F
BHT : 119.1 F
TBG PRESSURE : 1450 PSI
CSG PRESSURE : 0 PSI
PICK-UP : 6357'
INJ. FLUID : H2O

REMARKS

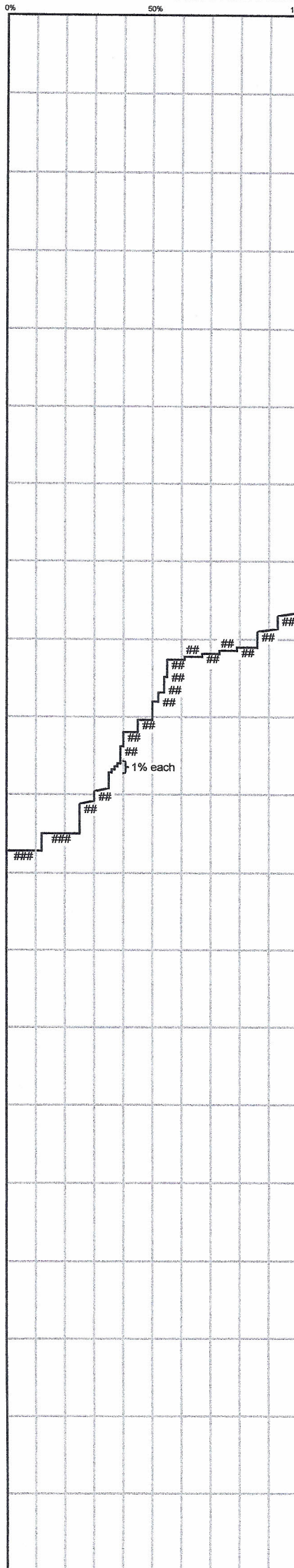
R/A TRACER INDICATES TOP PERF AND PACKERS OK.
RECORDED BY: R. ANDREWS
01/31/14, RAN 1.75" GAUGE RING TO 6365'±; HAD TO BEAT THROUGH "F" NIPPLE.

MECHANICAL INFORMATION

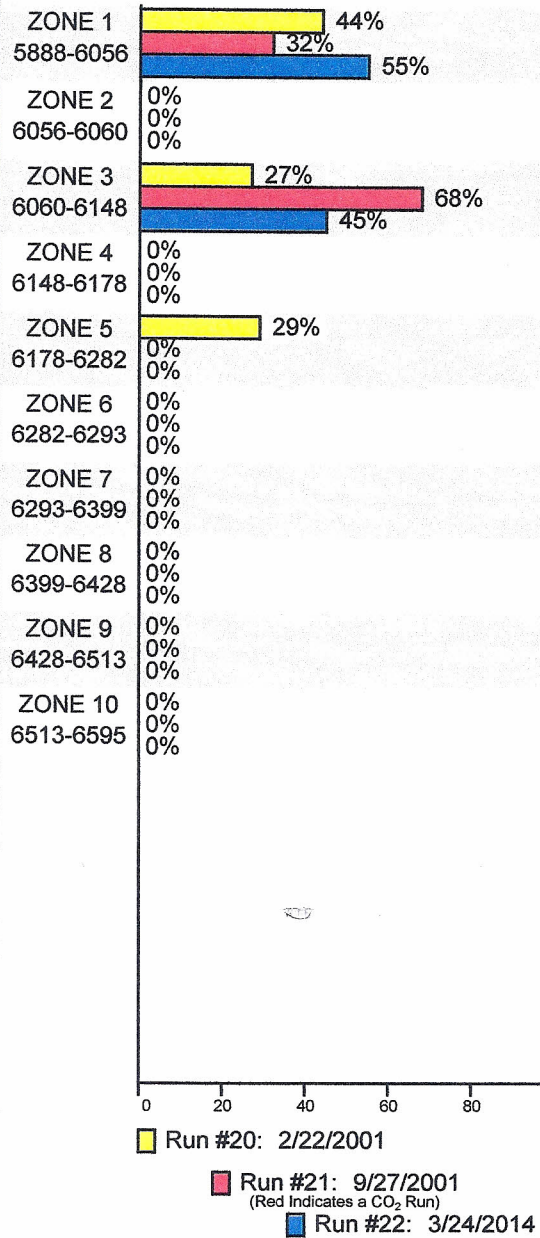
7" 23# CASING 0-5900'
5" 18# LINER 5835'-6595'
P.B.T.D. 8405'
2-7/8" D.L. TUBING 0-5755'
TOP PACKER 5755'-5759'
MILLOUT EXTENTION 5759'-5765'
2-3/8" TUBING SUB 5765'-5773'
1.875" "F" NIPPLE 5773'-5774'
2-3/8" TUBING SUB 5774'-5780'
1.875" "X" NIPPLE 5780'-5781'
2-3/8" F.G. TUBING 5781'-6314'
MULE SHOE 6315'
O-11 "B"



INJECTION PROFILE



PERCENTAGE INJECTED INTO ZONE



TEMPERATURES (F°)

DATE	RUN #20 2/22/2001	RUN #21 9/27/2001	RUN #22 3/24/2014
SURFACE	90.7	81.7	105.4
5888-6056	---	---	---
6056-6060	---	---	---
6060-6148	---	---	---
6148-6178	---	---	---
6178-6282	---	---	---
6282-6293	---	---	---
6293-6399	---	---	---
TDL (6357)	105.5	130.2	119.1
6399-6428	---	---	---
6428-6513	---	---	---
6513-6595	---	---	---
RATE (B/D)	2000	1600	537
PRESS (PSI)	1750	2100	1450