



Chevron
U.S.A., Inc.

WELL NO.: EMERALD 23
(2027)
FIELD : RANGELY, CO.

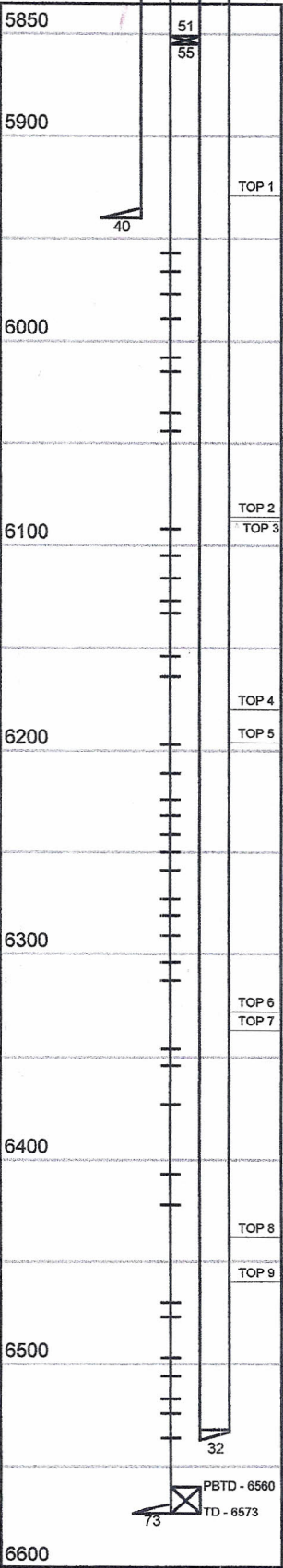
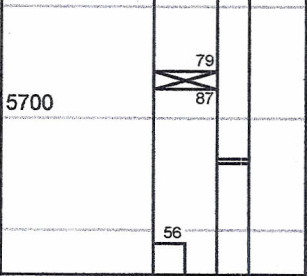
SURVEY DATA

RUN NO. 16			REMARKS
SURVEY TYPE : T-S-T	SURFACE TEMP : 96.7 F		R/A TRACER INDICATES TOP PERF AND PACKERS OK.
DATE : 3/21/2014	BHT : 123.2 F		
METERED RATE : 780 B/D	TBG PRESSURE : 1600 PSI		RECORDED BY: R. ANDREWS
MEASURED RATE : 785 B/D	CSG PRESSURE : 0 PSI		
DESIRED RATE : N/A	PICK-UP : 6537'		03/14/14, RAN 1.75" GAUGE RING TO 6536'±.
SERVICE CO. : PLS	INJ. FLUID : H2O		

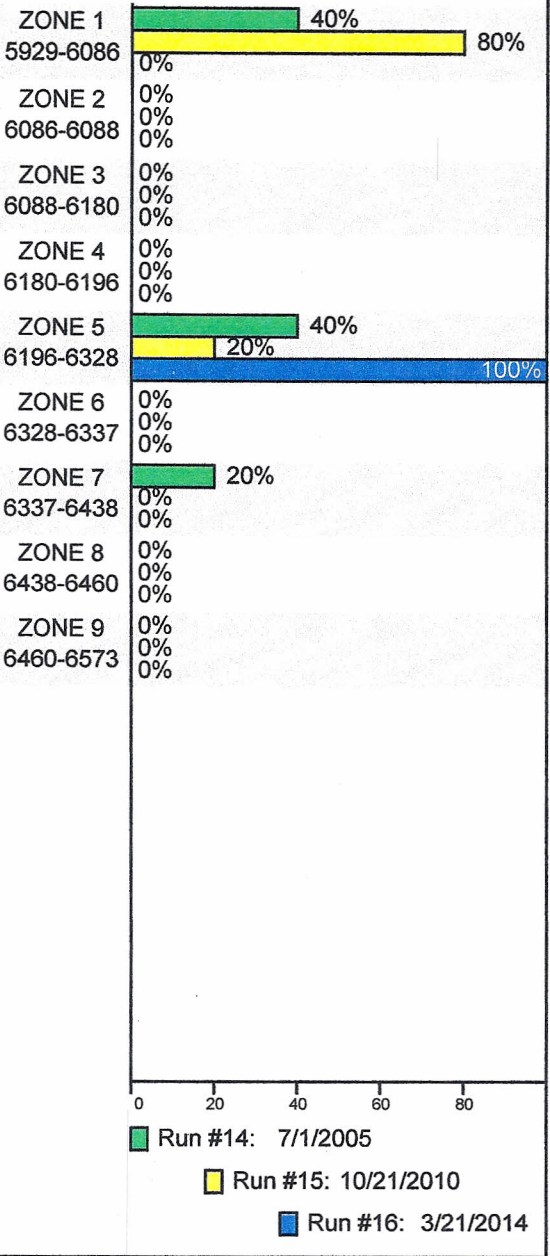
INJECTION PROFILE

MECHANICAL INFORMATION

7" 23# CASING 0-5940'
5" 18# LINER 5756'-6573'
P.B.T.D. 6560'
2-7/8" C.L. TUBING 0-5679'
TOP PACKER 5679'-5687'
2-7/8" FGW&TK-69 TBG 5687'-5718'
ON/OFF TOOL 1.875" "F" 5718'-5720'
2-3/8" TUBING 5720'-5851'
PACKER 5851'-5855'
2-3/8" F.G. TUBING 5855'-6532'
MULE SHOE 6532'
5650 N-10 "A"



PERCENTAGE INJECTED INTO ZONE



TEMPERATURES (F°)

DATE	RUN #14 7/1/2005	RUN #15 10/21/2010	RUN #16 3/21/2014
SURFACE	112.0	97.5	96.7
5929-6086	---	---	---
6086-6088	---	---	---
6088-6180	---	---	---
6180-6196	---	---	---
6196-6328	---	---	---
6328-6337	---	---	---
6337-6438	---	---	---
6438-6460	---	---	---
6460-6573	---	---	---
TDL (6537)	117.0	109.0	123.2
RATE (B/D)	2378	1072	785
PRESS (PSI)	1750	1620	1600