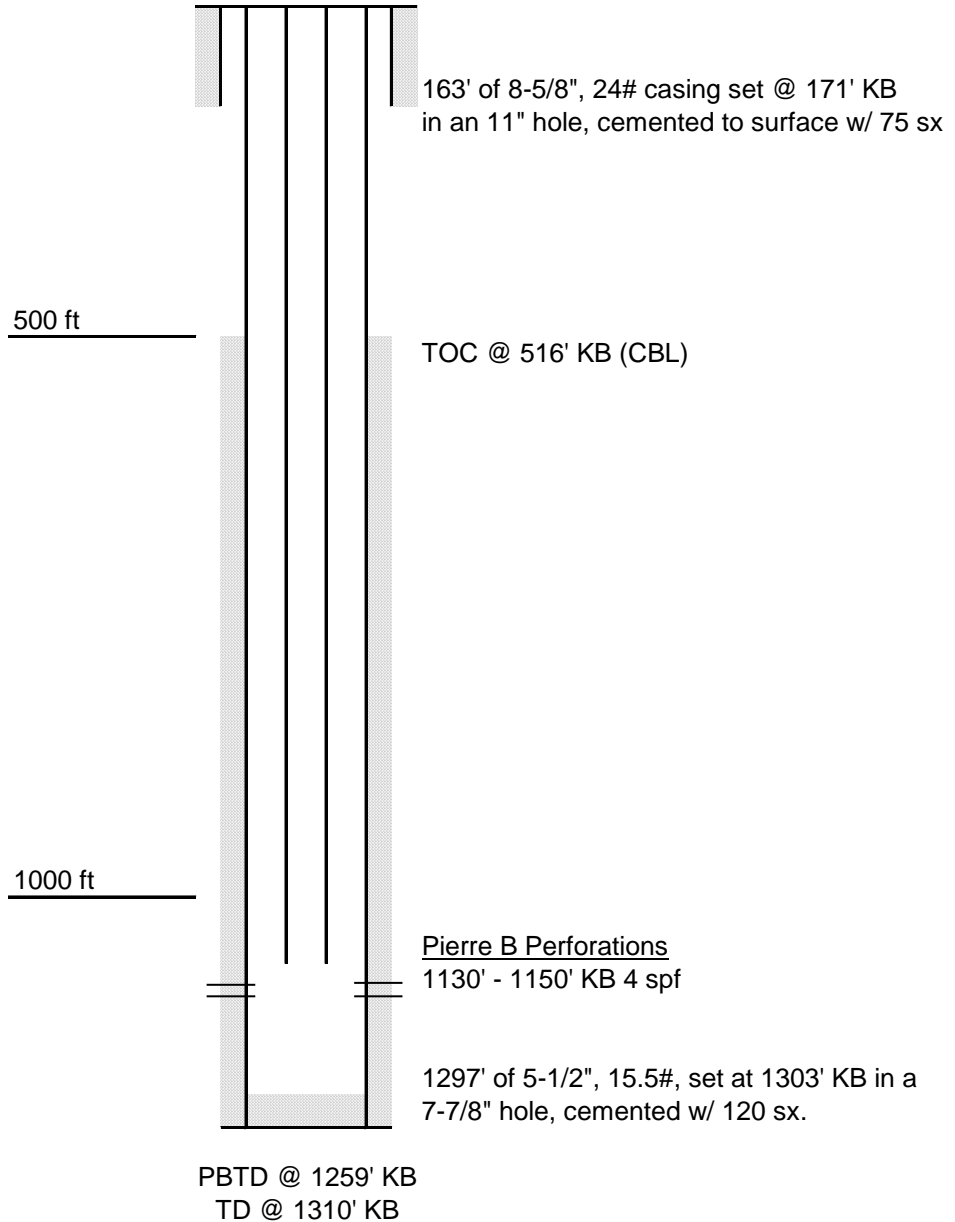


McCallum Unit #144
1095' FSL, 1718' FWL, (SE/SW), Sec. 2, T9N. R79W, 6th P.M.
Jackson County, Colorado
API # 05-057-06394

8163' KB
8155' GL



Updated May 20, 2003 trz

McCallum Unit #144
1095' FSL, 1718' FWL, (SE/SW), Sec. 2, T9N. R79W, 6th P.M.
Jackson County, Colorado
API # 05-057-06394

8163' KB
8155' GL

Top off surface, cut 4" below ground,
install plate

163' of 8-5/8", 24# casing set @ 171' KB
in an 11" hole, cemented to surface w/ 75 sx

HIC @ 250', est circ to surface and
circ cement to surface, 100 sx

500 ft

TOC @ 516' KB (CBL)

1000 ft

Set CIBP @ 1100' w/ 2sx cmt

Pierre B Perforations
1130' - 1150' KB 4 spf

1297' of 5-1/2", 15.5#, set at 1303' KB in a
7-7/8" hole, cemented w/ 120 sx.

PBTD @ 1259' KB
TD @ 1310' KB

Updated 4/18/14 srw

McCallum Unit #144
1095' FSL, 1718' FWL, (SE/SW), Sec. 2, T9N. R79W, 6th P.M.
Jackson County, Colorado
API # 05-057-06394

P&A Procedure

1. Currently well has packer stuck in perfs and HIC at 250'. MIRU wireline to set CIPB @ 1100'.
2. Dump bail 2 sx of cement onto plug.
3. MIRU pump. Establish circulation between 5 1/2" csg and 8 5/8" surface csg.
If not able to establish good returns to surface then RU wireline and shoot 2 holes @ 250'.
Establish circulation to the surface.
4. Pump 100 sx cement or until good cement returns are seen at the surface.
5. SD and mointor cement level in 5 1/2" and 8 5/8" casing.
6. Top off with redimix if necessary
7. Cut casing 4' below surface and weld on plate with weep hole.
8. Plate to contain following info.

Bonanza Creek Energy Company, Inc
McCallum #144
API No. 05-057-06394