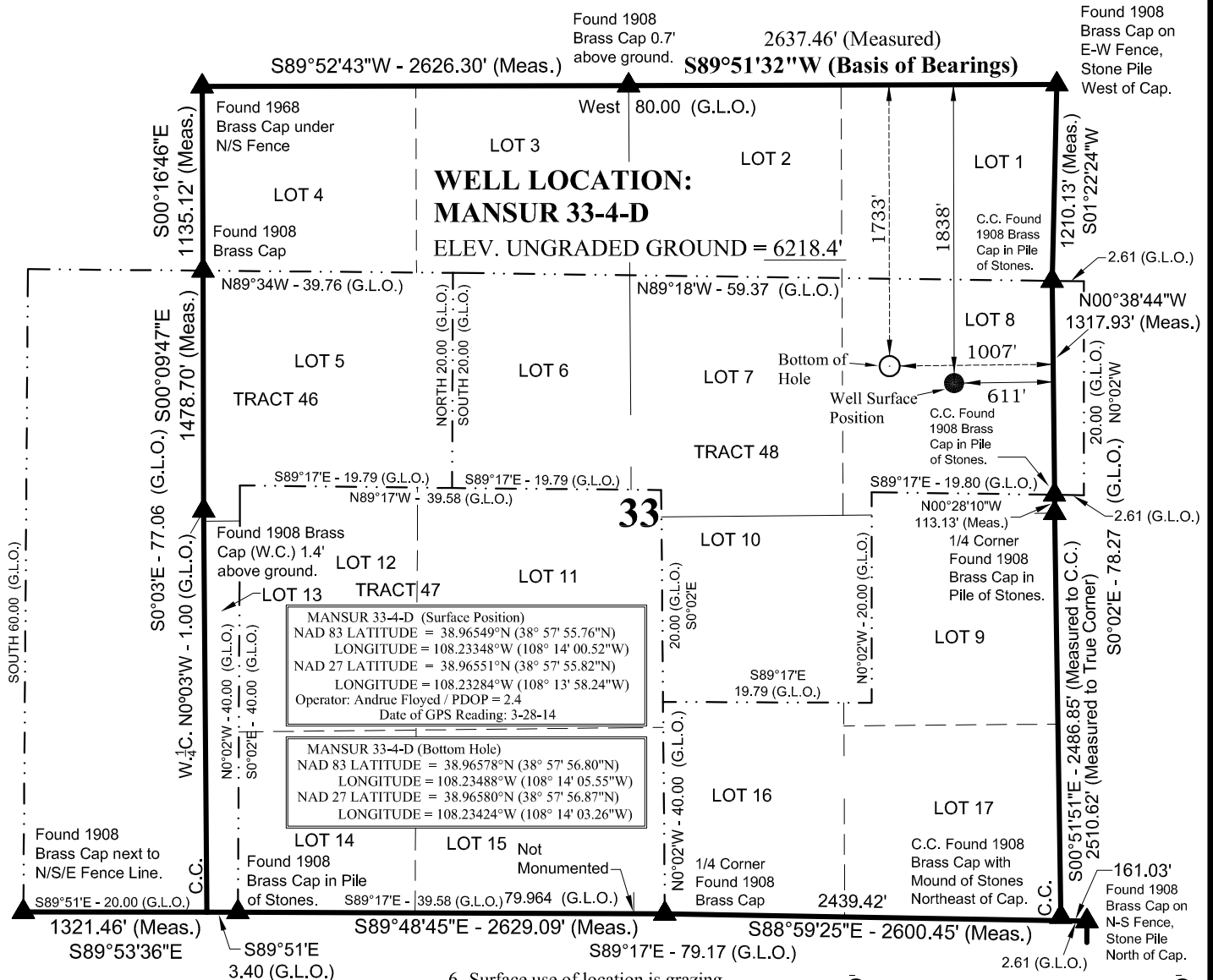


# T12S, R97W, 6th P.M.



## NOTES:

▲ = Section Corners Located

- Well footages are measured at right angles to the Section Lines.
- Government Land Office (G.L.O.) distances are shown in feet or chains. 1 chain = 66 feet.
- The Bottom of hole bears N75°15'27"W 410.92' from the Surface Position
- Bearings are based on Global Positioning Satellite observations.
- Basis of Elevation is a Bench Mark B141 1934 Brass Cap Located in the SW 1/4 of Section 33, T12S, R99W, 6th P.M. The Elevation of this Bench Mark is Shown on the Whitewater 7.5 Min. Quadrangle as being 4934'.
- Surface use of location is grazing. Vegetation consists mainly juniper, sagebrush & native grasses.
- See Addendum to Legal Plat For Existing Improvements within 500' of the Well Pad.



SCALE

## SURVEYOR'S CERTIFICATE

THIS IS TO CERTIFY THAT THE ABOVE PLAT WAS PREPARED FROM FIELD NOTES OF ACTUAL SURVEYS MADE BY ME OR UNDER MY SUPERVISION AND THAT THE SAME ARE TRUE AND CORRECT TO THE BEST OF MY KNOWLEDGE AND BELIEF.

4-4-2014  
38230  
PROFESSIONAL LAND SURVEYOR  
REGISTRATION NO. 38230  
STATE OF COLORADO

**FRAM OPERATING, LLC**

**LEGAL PLAT**

**MANSUR 33-4-D**

**WELL PLAT**

**1733' FNL, 1007' FEL (Bottom Hole)**  
**LOT 8 OF SECTION 33, T12S, R97W,**  
**6th P.M., MESA COUNTY, COLORADO.**

**TIMBERLINE**

(435) 789-1365

**ENGINEERING & LAND SURVEYING, INC.**

209 NORTH 300 WEST - VERNAL, UTAH 84078

DATE SURVEYED: 3-28-14	SURVEYED BY: A.F.	SHEET <b>4</b> OF 14
DATE DRAWN: 3-31-14	DRAWN BY: M.W.W.	
SCALE: 1" = 1000'	Date Last Revised: 4-4-14 M.W.W.	