

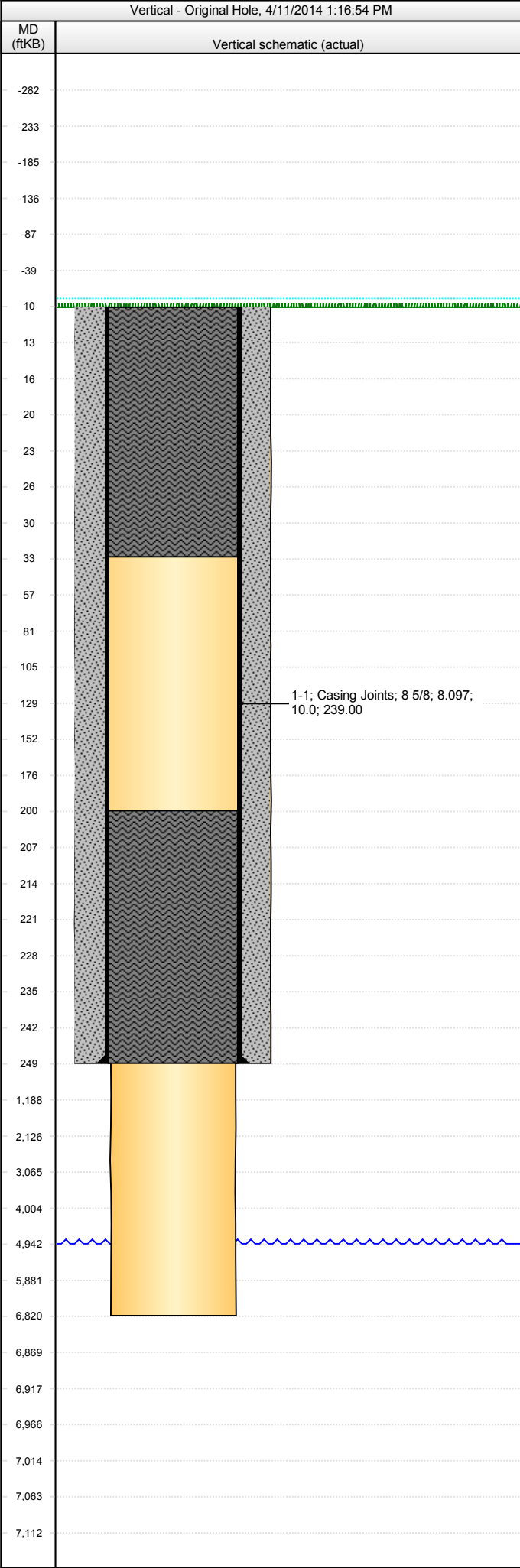


Whiting Oil & Gas Corp
1700 Broadway, Suite 2300
Denver, CO 80290
(303) 837-1661

WOGC Well History Schematic Report

Well Name: BUSH 1

API Number 0512309986		WPC ID		Well Permit Number			Field Name Mitigation-DJ Basin			County Weld			State CO		
Well Configuration Type Vertical				Orig KB Elv (ft) 4,936.00		Ground Elevation (ft) 4,926.00		Casing Flange Elevation (ft)		Tubing Head Elevation (ft)		Total Depth (ftKB) 6,820.0			
Original Spud Date 9/20/1980		Completion Date 9/27/1980		Asset Group			Responsible Engineer James Kopp			N/S Dist (ft) 660.0		N/S Ref FNL	E/W Dist (ft) 660.0		E/W Ref FWL
Lot	Quarter 1 NW	Quarter 2 NW	Quarter 3	Quarter 4	Section 15	Section Suffix	Section Type	Township 10	Township N/S Dir N	Range 58	Range E/W Dir W	Meridian 6TH			



Jobs							
Job Type		Start Date		Summary			
Drill & Abandon		9/20/1980					
Perforations							
Type of Hole		Date		Top (ftKB)	Btm (ftKB)		
Stim/Treat Stages							
Stage Type	Start Date	Top (ftKB)	Btm (ftKB)	Stim/Treat Fluid		Vol Clean Pump (bbl)	
Wellbore Sections							
Section Des	Wellbore Name		Size (in)	Act Top (ftKB)	Act Btm (ftKB)	Start Date	
Surface	Original Hole		12 1/4	10.0	249.0	9/20/1980	
Production	Original Hole		7 7/8	249.0	6,820.0	9/20/1980	
Surface Csg, 249.0ftKB							
Comment							
OD (in)	Wt (lb/ft)	Grade	Top (ftKB)	Btm (ftKB)	Len (ft)	Item Des	
8 5/8	24.00	J-55	10.0	249.0	239.00	Casing Joints	
Cement Stages							
Des			Top (ftKB)	Btm (ftKB)	Top Meas Meth		Pump Start Date
Surface Casing Cement			10.0	249.0			9/20/1980
Cement Plug			200.0	249.0			9/27/1980
Cement Plug			10.0	33.0			9/27/1980
Other In Hole							
Des			OD (in)	ID (in)	Run Date	Top (ftKB)	Btm (ftKB)
<des> set at <depth>ftKB on <dt>mmrun>							
Set Depth (ftKB)		Comment			Run Date	Pull Date	
Item Des				OD (in)	Len (ft)	Top (ftKB)	Btm (ftKB)
<des> on <dt>mmrun>							
Rod Description					Run Date		
Item Des				OD (in)	Len (ft)	Top (ftKB)	Btm (ftKB)