

---

**WPX ENERGY ROCKY MOUNTAIN LLC-EBUS**

---

**PA 441-21  
PARACHUTE  
Garfield County , Colorado**

**Cement Surface Casing**  
**22-Dec-2013**

**Post Job Summary**

## The Road to Excellence Starts with Safety

Sold To #: 300721	Ship To #: 3123598	Quote #:	Sales Order #: 900988614
Customer: WPX ENERGY ROCKY MOUNTAIN LLC-EBUS		Customer Rep: Sampson, Harry	
Well Name: PA		Well #: 441-21	API/UWI #: 05-045-22032
Field: PARACHUTE	City (SAP): PARACHUTE	County/Parish: Garfield	State: Colorado
Lat: N 39.511 deg. OR N 39 deg. 30 min. 37.847 secs.		Long: W 108.008 deg. OR W -109 deg. 59 min. 31.423 secs.	
Contractor: Nabors		Rig/Platform Name/Num: Nabors 573	
Job Purpose: Cement Surface Casing			
Well Type: Development Well		Job Type: Cement Surface Casing	
Sales Person: MAYO, MARK		Srvc Supervisor: DEUSSEN, EDWARD	MBU ID Emp #: 485182

## Job Personnel

HES Emp Name	Exp Hrs	Emp #	HES Emp Name	Exp Hrs	Emp #	HES Emp Name	Exp Hrs	Emp #
DEUSSEN, EDWARD Eric	8	485182	YENTER, TRAVIS Drake	8	556030	LINN, PAUL Andrew	8	479143
WILSON, BENJAMIN Wallace	8	533647						

## Equipment

HES Unit #	Distance-1 way	HES Unit #	Distance-1 way	HES Unit #	Distance-1 way	HES Unit #	Distance-1 way
	60 mile	10722398	60 mile	10872429	60 mile	10995027	60 mile
11360881	60 mile	11583932	60 mile	11808847	60 mile		

## Job Hours

Date	On Location Hours	Operating Hours	Date	On Location Hours	Operating Hours	Date	On Location Hours	Operating Hours
12/21/13	4.5	1	12/22/13	3.5	3			

TOTAL	Total is the sum of each column separately							
-------	--	--	--	--	--	--	--	--

## Job

Formation Name	Top	Bottom	Called Out	Date	Time	Time Zone
Formation Depth (MD)			On Location	21 - Dec - 2013	15:00	MST
Form Type	BHST		Job Started	21 - Dec - 2013	19:30	MST
Job depth MD	1570'	Job Depth TVD	1570'	Job Started	22 - Dec - 2013	00:46
Water Depth		Wk Ht Above Floor	16.4 m	Job Completed	22 - Dec - 2013	01:45
Perforation Depth (MD)	From	To	Departed Loc	22 - Dec - 2013	03:30	MST

## Well Data

Description	New / Used	Max pressure MPa	Size mm	ID mm	Weight kg/m	Thread	Grade	Top MD m	Bottom MD m	Top TVD m	Bottom TVD m
-------------	------------	------------------	---------	-------	-------------	--------	-------	----------	-------------	-----------	--------------

## Tools and Accessories

Type	Size	Qty	Make	Depth	Type	Size	Qty	Make	Depth	Type	Size	Qty	Make
Guide Shoe					Packer					Top Plug	9 5/8"	1	HES
Float Shoe					Bridge Plug					Bottom Plug			
Float Collar					Retainer					SSR plug set			
Insert Float										Plug Container	9 5/8"	1	HES
Stage Tool										Centralizers			

## Miscellaneous Materials

Gelling Agt		Conc		Surfactant		Conc		Acid Type		Qty		Conc	%
Treatment Fld		Conc		Inhibitor		Conc		Sand Type		Size		Qty	

## Fluid Data

Stage/Plug #: 1													
Fluid #	Stage Type	Fluid Name			Qty	Qty uom	Mixing Density kg/m3	Yield m3/sk	Mix Fluid m3/tonne	Rate m3/min	Total Mix Fluid m3/tonne		

Stage/Plug #: 1													
Fluid #	Stage Type	Fluid Name			Qty	Qty uom	Mixing Density kg/m3	Yield m3/sk	Mix Fluid m3/tonne	Rate m3/min	Total Mix Fluid m3/tonne		

Stage/Plug #: 1									
1	Fresh Water Spacer		20.00	bbl	8.33	.0	.0	4.0	
2	VersaCem GJ1 Lead Cement	VARICEM (TM) CEMENT (452009)	200.0	sacks	12.3	2.38	13.75	8.0	13.75
	13.75 Gal	FRESH WATER							
3	VersaCemGJ1 Tail Cement	VARICEM (TM) CEMENT (452009)	175.0	sacks	12.8	2.11	11.75	7.5	11.75
	11.75 Gal	FRESH WATER							
4	Displacement Fluid		119.00	bbl	8.34	.0	.0	10.0	
Calculated Values		Pressures		Volumes					
Displacement	119.4	Shut In: Instant		Lost Returns		Cement Slurry	150.6	Pad	
Top Of Cement	SURFACE	5 Min		Cement Returns	30	Actual Displacement	119.4	Treatment	
Frac Gradient		15 Min		Spacers	20	Load and Breakdown		Total Job	290
Rates									
Circulating		Mixing	8	Displacement	10	Avg. Job	8		
Cement Left In Pipe	Amount	46ft	Reason	Shoe Joint					
Frac Ring # 1 @	ID	Frac ring # 2 @	ID	Frac Ring # 3 @	ID	Frac Ring # 4 @	ID		
The Information Stated Herein Is Correct				Customer Representative Signature					

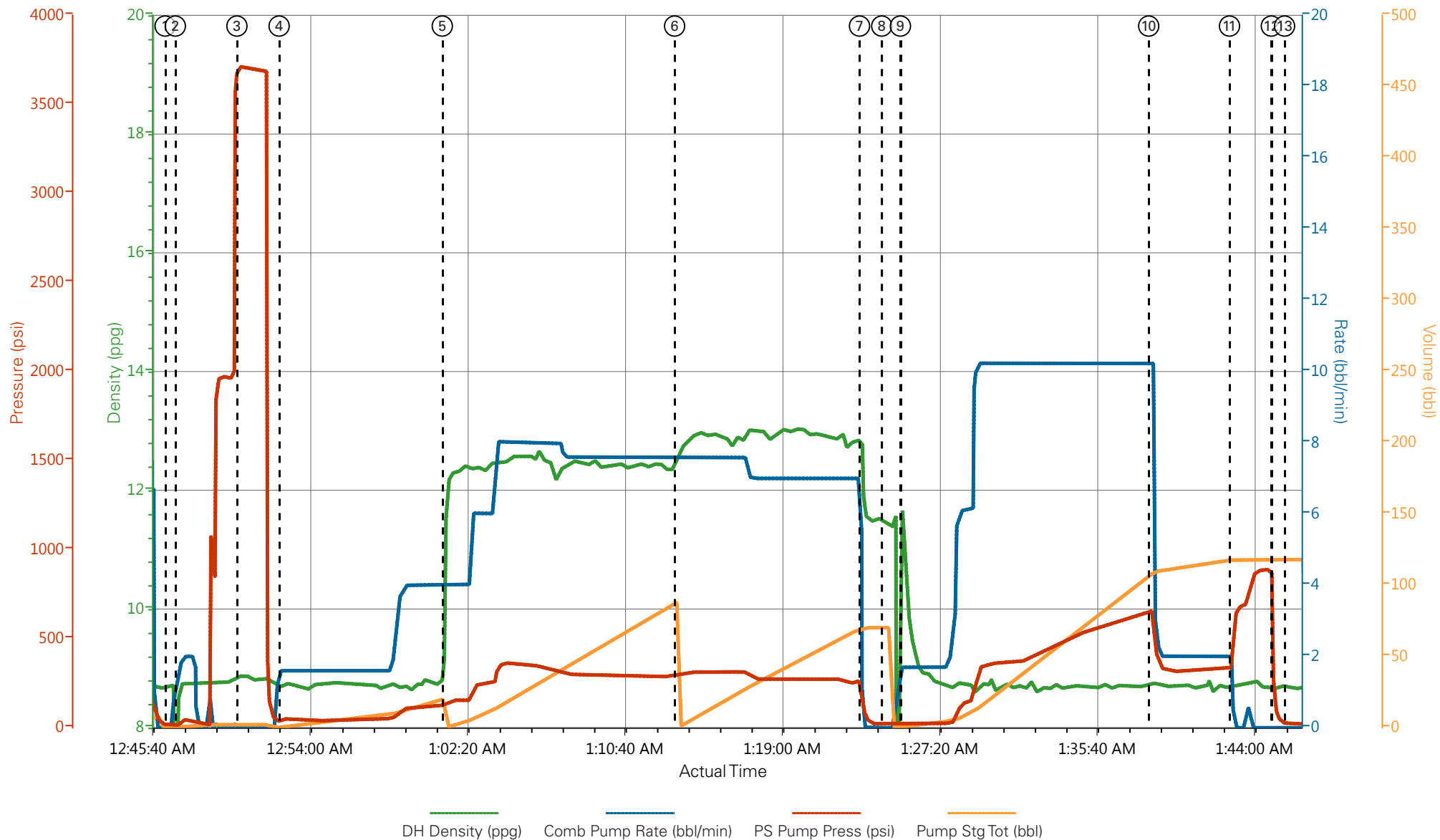
*The Road to Excellence Starts with Safety*

<b>Sold To #:</b> 300721	<b>Ship To #:</b> 3123598	<b>Quote #:</b>	<b>Sales Order #:</b> 900988614
<b>Customer:</b> WPX ENERGY ROCKY MOUNTAIN LLC-EBUS		<b>Customer Rep:</b> Sampson, Harry	
<b>Well Name:</b> PA		<b>Well #:</b> 441-21	<b>API/UWI #:</b> 05-045-22032
<b>Field:</b> PARACHUTE	<b>City (SAP):</b> PARACHUTE	<b>County/Parish:</b> Garfield	<b>State:</b> Colorado
<b>Legal Description:</b>			
<b>Lat:</b> N 39.511 deg. OR N 39 deg. 30 min. 37.847 secs.		<b>Long:</b> W 108.008 deg. OR W -109 deg. 59 min. 31.423 secs.	
<b>Contractor:</b> Nabors		<b>Rig/Platform Name/Num:</b> Nabors 573	
<b>Job Purpose:</b> Cement Surface Casing			<b>Ticket Amount:</b>
<b>Well Type:</b> Development Well		<b>Job Type:</b> Cement Surface Casing	
<b>Sales Person:</b> MAYO, MARK		<b>Srvc Supervisor:</b> DEUSSEN, EDWARD	<b>MBU ID Emp #:</b> 485182

Activity Description	Date/Time	Cht #	Rate m3/min	Volume m3		Pressure MPa		Comments
				Stage	Total	Tubing	Casing	
Call Out	12/21/2013 15:00							
Pre-Convoy Safety Meeting	12/21/2013 16:45							ALL HES PERSONNEL
Crew Leave Yard	12/21/2013 17:00							1 ELITE, 2 660s, 1 PICKUP
Arrive At Loc	12/21/2013 19:30							RIG JUST STARTING TO RUN CASING
Assessment Of Location Safety Meeting	12/21/2013 19:45							
Pre-Rig Up Safety Meeting	12/21/2013 22:45							ALL HES PERSONNEL
Rig-Up Equipment	12/21/2013 23:00							1 HARD LINE TO FLOOR, WATER HOSE TO UPRIGHT AND DAY TANK, BULK HOSE TO 660s
Pre-Job Safety Meeting	12/22/2013 00:15							ALL HES PERSONNEL AND RIG CREW
Start Job	12/22/2013 00:46							TD 1580'. TP 1563', SJ 46', MUD 10.4 PPG, 13 1/2" OH, 9 5/8" CSG H-40 32.3#
Other	12/22/2013 00:47		2	2			45.0	FILL LINES
Pressure Test	12/22/2013 00:50							PRESSURED UP TO 3715 PSI - PRESSURE HELD WELL
Pump Spacer 1	12/22/2013 00:52		4	20			120.0	FRESH WATER
Pump Lead Cement	12/22/2013 01:01		8	84.8			355.0	200 SKS, 12.3 PPG, 2.38 YIELD, 13.75 GAL/SK
Pump Tail Cement	12/22/2013 01:13		8	65.8			313.0	175 SKS, 12.8 PPG, 2.11 YIELD, 11.75 GAL/SK

Activity Description	Date/Time	Cht #	Rate m3/min	Volume m3		Pressure MPa		Comments
				Stage	Total	Tubing	Casing	
Shutdown	12/22/2013 01:23							WASH UP ON TOP OF PLUG
Drop Top Plug	12/22/2013 01:24							
Pump Displacement	12/22/2013 01:25		10	119.4			659.0	FRESH WATER
Slow Rate	12/22/2013 01:38		2	10			324.0	
Bump Plug	12/22/2013 01:42						330.0	GOOD RETURNS THROUGHOUT JOB - GOT 30 BBLS CEMENT TO SURFACE
Check Floats	12/22/2013 01:45							FLOATS HELD - GOT 1/2 BBL BACK
End Job	12/22/2013 01:45							NO DERRICK CHARGE, NO ADD HOURS, 40 LBS SUGAR
Pre-Rig Down Safety Meeting	12/22/2013 02:00							ALL HES PERSONNEL
Rig-Down Equipment	12/22/2013 02:15							
Pre-Convoy Safety Meeting	12/22/2013 03:15							ALL HES PERSONNEL
Crew Leave Location	12/22/2013 03:30							THANK YOU FOR USING HALLIBURTON - ED DEUSSEN AND CREW

# WPX - PA 441-21 - 9 5/8" SURFACE



- |                                   |                                      |                                      |                        |
|-----------------------------------|--------------------------------------|--------------------------------------|------------------------|
| ① Start Job 8.66;0;14;0           | ⑤ Pump Lead Cement 11.47;4;129;0.1   | ⑨ Pump Displacement 11.58;1.6;33;0.7 | ⑬ End Job 8.7;0;21;118 |
| ② Prime Lines 8.76;1.5;16;0.3     | ⑥ Pump Tail Cement 12.57;7.6;296;0.1 | ⑩ Slow Rate 8.75;10.2;656;108.1      |                        |
| ③ Test Lines 8.86;0;3715;2.1      | ⑦ Shutdown 12.3;0;133;70.2           | ⑪ Bump Plug 8.69;0.5;557;117.9       |                        |
| ④ Pump H2O Spacer 8.69;1.6;50;0.5 | ⑧ Drop Top Plug 11.43;0;19;70.2      | ⑫ Check Floats 8.64;0;132;118        |                        |

▼ **HALLIBURTON** | iCem® Service

Created: 2013-12-21 20:42:53, Version: 3.0.121

Edit

Customer: WPX ENERGY ROCKY MOUNTAIN LLC-EBUS

Job Date: 12/21/2013 11:45:04 PM

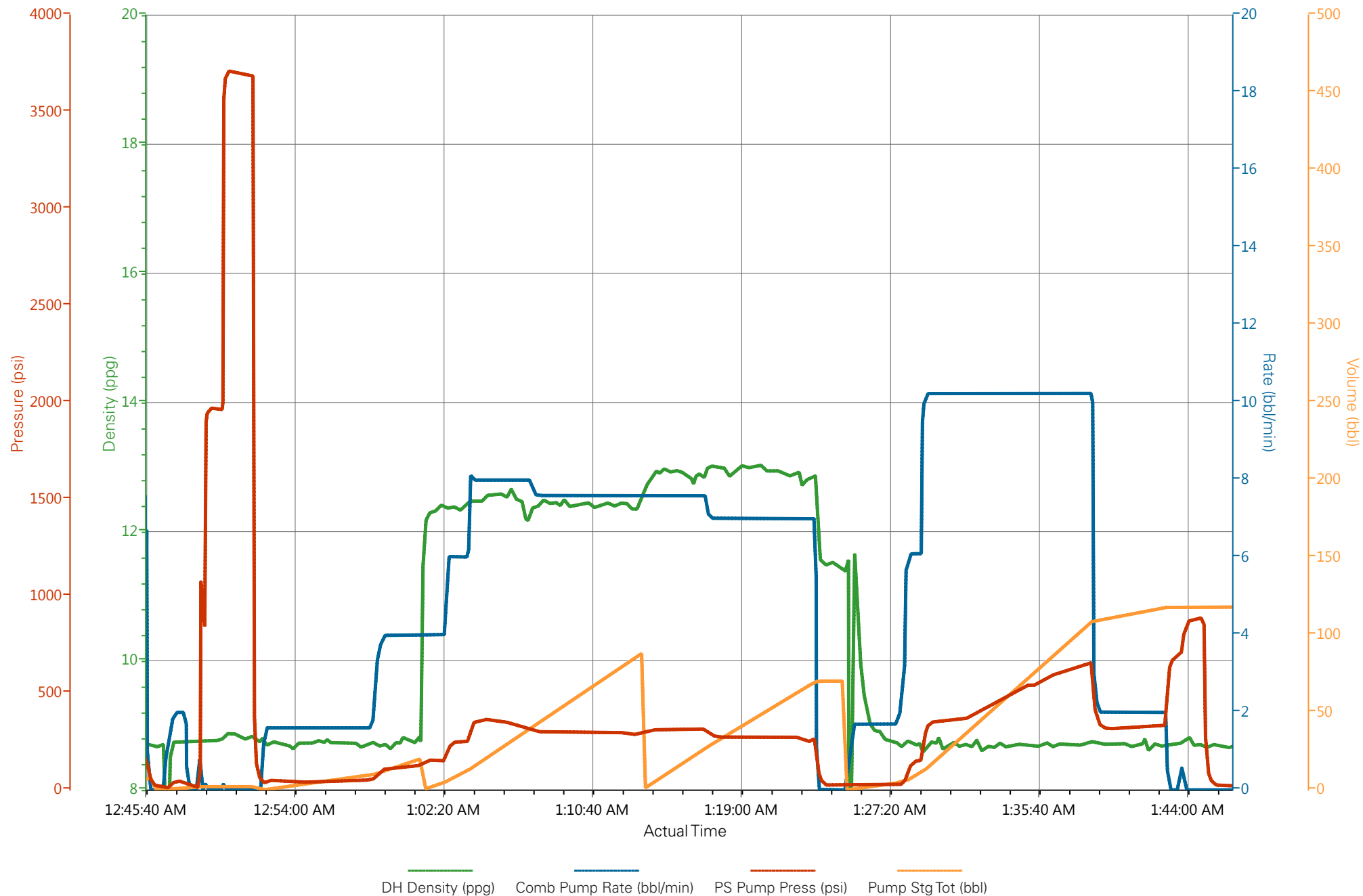
Well: PA 441-21

Representative: Harry Samson

Sales Order #: 900988614

Elite #7: Ed Deussen / Andrew Linn

# WPX - PA 441-21 - 9 5/8" SURFACE



# HALLIBURTON

## Water Analysis Report

Company: WPX

Submitted by: ED DEUSSEN

Attention: J.TROUT

Lease PA

Well # 441-21

Date: 12/21/2013

Date Rec.: 12/21/2013

S.O.# 900988614

Job Type: 9 5/8" SURFACE

Specific Gravity	<i>MAX</i>	<b>1</b>
pH	<i>8</i>	<b>6.5</b>
Potassium (K)	<i>5000</i>	<b>400</b> Mg / L
Calcium (Ca)	<i>500</i>	<b>120</b> Mg / L
Iron (FE2)	<i>300</i>	<b>0</b> Mg / L
Chlorides (Cl)	<i>3000</i>	<b>0</b> Mg / L
Sulfates (SO <sub>4</sub> )	<i>1500</i>	<b>&lt;200</b> Mg / L
Temp	<i>40-80</i>	<b>38</b> Deg
Total Dissolved Solids		<b>290</b> Mg / L

Respectfully: ED DEUSSEN

Title: CEMENTING SUPERVISOR

Location: Grand Junction, CO

NOTICE: This report is limited to the described sample tested. Any person using or relying on this report agrees that Halliburton shall not be liable for any loss or damage whether due to act or omission resulting from such report or its use.



<b>Sales Order #:</b> 900988614	<b>Line Item:</b> 10	<b>Survey Conducted Date:</b> 12/22/2013
<b>Customer:</b> WPX ENERGY ROCKY MOUNTAIN LLC-EBUS		<b>Job Type (BOM):</b> CMT SURFACE CASING BOM
<b>Customer Representative:</b> HARRY SAMSON		<b>API / UWI: (leave blank if unknown)</b> 05-045-22032
<b>Well Name:</b> PA		<b>Well Number:</b> 441-21
<b>Well Type:</b> Development Well	<b>Well Country:</b> United States of America	
<b>H2S Present:</b>	<b>Well State:</b> Colorado	<b>Well County:</b> Garfield

Dear Customer,

We hope that you were satisfied with the service quality of this job performed by Halliburton. It is the aim of our management and service personnel to deliver equipment and service of a standard unmatched in the service sector of the energy industry.

Please take the time to let us know if our performance met with your satisfaction. Please be as critical as possible to ensure we constantly improve our service. Your comments are of great value to us and are intended for the exclusive use of Halliburton.

### CUSTOMER SATISFACTION SURVEY

CATEGORY	CUSTOMER SATISFACTION RESPONSE	
Survey Conducted Date	The date the survey was conducted	12/22/2013
Survey Interviewer	The survey interviewer is the person who initiated the survey.	EDWARD DEUSSEN (HB57194)
Customer Participation	Did the customer participate in this survey? (Y/N)	Yes
Customer Representative	Enter the Customer representative name	HARRY SAMSON
HSE	Was our HSE performance satisfactory? Circle Y or N	Yes
Equipment	Were you satisfied with our Equipment? Circle Y or N	Yes
Personnel	Were you satisfied with our people? Circle Y or N	Yes
Customer Comment	Customer's Comment	

CUSTOMER SIGNATURE

<b>Sales Order #:</b> 900988614	<b>Line Item:</b> 10	<b>Survey Conducted Date:</b> 12/22/2013
<b>Customer:</b> WPX ENERGY ROCKY MOUNTAIN LLC-EBUS		<b>Job Type (BOM):</b> CMT SURFACE CASING BOM
<b>Customer Representative:</b> HARRY SAMSON		<b>API / UWI: (leave blank if unknown)</b> 05-045-22032
<b>Well Name:</b> PA		<b>Well Number:</b> 441-21
<b>Well Type:</b> Development Well	<b>Well Country:</b> United States of America	
<b>H2S Present:</b>	<b>Well State:</b> Colorado	<b>Well County:</b> Garfield

*KEY PERFORMANCE INDICATORS*

General	
<b>Survey Conducted Date</b>	12/22/2013
The date the survey was conducted	

Cementing KPI Survey	
<b>Type of Job</b>	0
Select the type of job. (Cementing or Non-Cementing)	
<b>Select the Maximum Deviation range for this Job</b>	Vertical
What is the highest deviation for the job you just completed? This may not be the maximum well deviation.	
<b>Total Operating Time (hours)</b>	4
Total Operating Hours Including Rig-up, Pumping, Rig-down. Enter in decimal format.	
<b>HSE Incident, Accident, Injury</b>	No
HSE Incident, Accident, Injury. This should be recordable incidents only.	
<b>Was the job purpose achieved?</b>	Yes
Was the job delivered correctly as per customer agreed design?	
<b>Operating Hours (Pumping Hours)</b>	1
Total number of hours pumping fluid on this job. Enter in decimal format.	
<b>Customer Non-Productive Rig Time (hrs)</b>	0
Lost time due to Halliburton in the start, execution, or completion of an ordered service or product, or delays in a follow-on service. Enter in decimal format. 0 if none.	
<b>Type of Rig Classification Job Was Performed</b>	Drilling Rig (Portable)
Type Of Rig (classification) Job Was Performed On	
<b>Number Of JSAs Performed</b>	5
Number Of Jsas Performed	
<b>Number of Unplanned Shutdowns</b>	0
Unplanned shutdown is when injection stops for any period of time.	
<b>Was this a Primary Cement Job (Yes / No)</b>	Yes

<b>Sales Order #:</b> 900988614	<b>Line Item:</b> 10	<b>Survey Conducted Date:</b> 12/22/2013
<b>Customer:</b> WPX ENERGY ROCKY MOUNTAIN LLC-EBUS		<b>Job Type (BOM):</b> CMT SURFACE CASING BOM
<b>Customer Representative:</b> HARRY SAMSON		<b>API / UWI: (leave blank if unknown)</b> 05-045-22032
<b>Well Name:</b> PA		<b>Well Number:</b> 441-21
<b>Well Type:</b> Development Well	<b>Well Country:</b> United States of America	
<b>H2S Present:</b>	<b>Well State:</b> Colorado	<b>Well County:</b> Garfield

Primary Cement Job= Casing job, Liner job, or Tie-back job.	
<b>Did We Run Wiper Plugs?</b> Did We Run Top And Bottom Casing Wiper Plugs?	Top
<b>Mixing Density of Job Stayed in Designed Density Range (0-100%)</b> Density Range defined as +/- .20 ppg. Calculation: Total BBLs cement mixed at designed density divided by total BBLs of cement multiplied by 100	95
<b>Was Automated Density Control Used?</b> Was Automated Density Control (ADC) Used ?	Yes
<b>Pump Rate (percent) of Job Stayed At Designed Pump Rate</b> Pump Rate range defined as +/- 1bbl/min. Calculation: Total BBLs of fluid pumped at the designed rate divided by Total BBLs of fluid pumped, multiplied by 100	98
<b>Nbr of Remedial Sqz Jobs Rqd - Competition</b> Number Of Remedial Squeeze Jobs Required After Primary Job Performed By Competition	0
<b>Nbr of Remedial Plug Jobs Rqd - HES</b> Number Of Remedial Plug Jobs Needed After Primary Plug Pumped By HES	0
<b>Nbr of Remedial Sqz Jobs Rqd - HES</b> Number Of Remedial Squeeze Jobs Required After Primary Job Performed By HES	0