

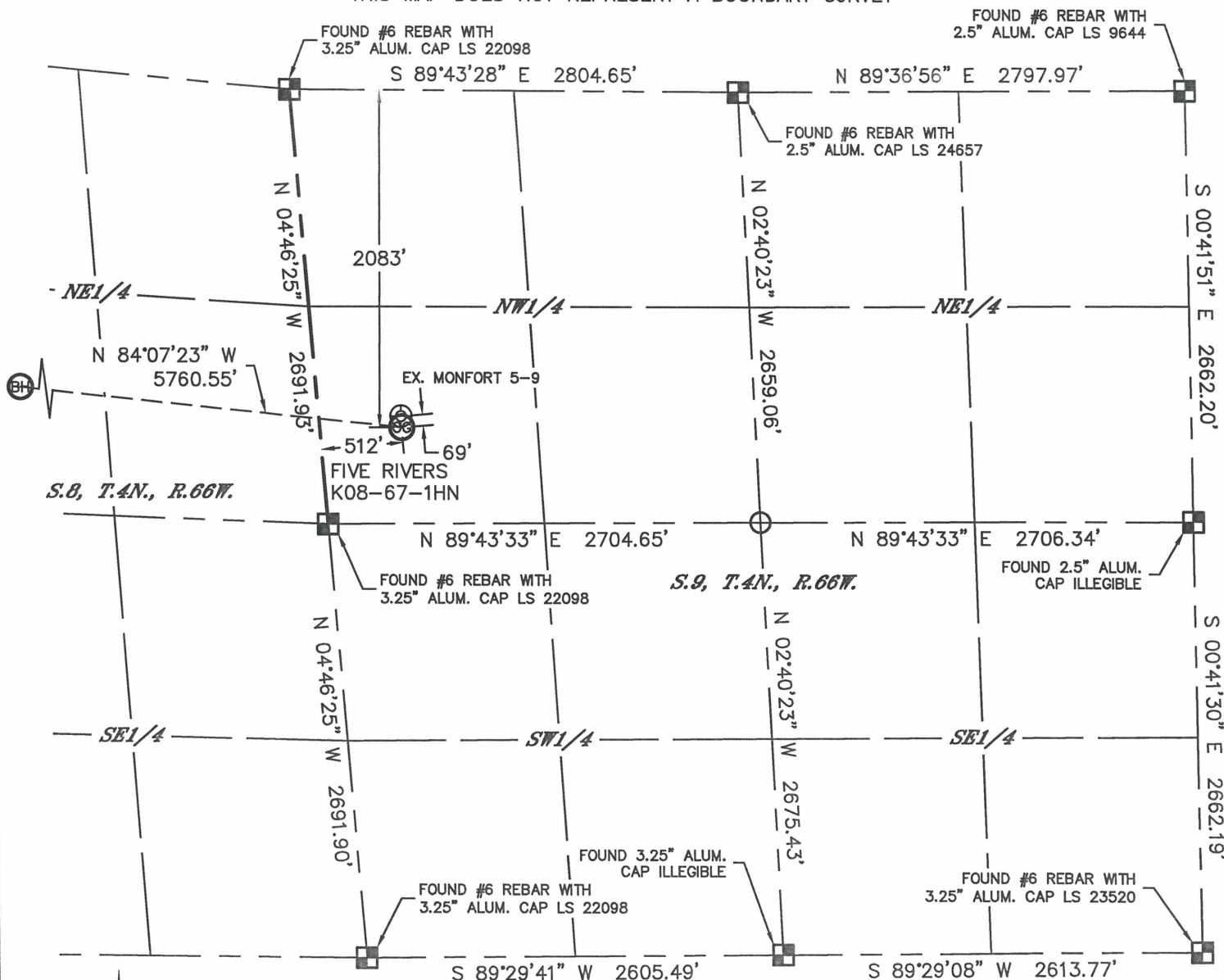


Lat40°, Inc. 1635 Foxtrail Drive, Suite 325 Loveland, CO 970-776-3321

WELL LOCATION CERTIFICATE

THIS MAP DOES NOT REPRESENT A BOUNDARY SURVEY

SECTION: 9
TOWNSHIP: 4N
RANGE: 66W



In accordance with a request from Brian DeRose with Noble Energy Inc. Lat40°, Inc. has determined the surface location of the FIVE RIVERS K08-67-1HN to be 2083' from the NORTH line and 512' from the WEST line as measured at right angles from the section lines of Section 9, Township 4 North, Range 66 West and the bottom hole to be 1650' from the NORTH line and 75' from the WEST line as measured at right angles from the section lines of Section 8, Township 4 North, Range 66 West of the Sixth Principal Meridian, County of Weld, State of Colorado.

I hereby state that this Well Location Certificate was prepared by me, or under my direct supervision, that the fieldwork was completed on 11/19/2013, for and on behalf of Noble Energy Inc. That this is not a Land Survey Plat or an Improvement Survey Plat, and that it is not to be relied upon for establishment of fence, building, or other future improvement lines.

NOTE:

- 1) Bearings shown are Grid Bearings of the Colorado State Plane Coordinate System, North Zone, North American Datum 1983/2007. The lineal dimensions as contained herein are based upon the "U.S. Survey Foot."
- 2) Ground elevations are based on an observed GPS elevation (NAVD 1988 DATUM).
- 3) IMPROVEMENTS: See LOCATION DRAWING for all visible improvements within 500' of disturbed area.
- 4) SURFACE USE: RANGELAND
- 5) INSTRUMENT OPERATOR: WYATT HALL
- 6) NEAREST EXISTING WELL: MONFORT 5-9, 69'
- NEAREST CULTURAL ITEMS:
BUILDING: ±1321' SE
BUILDING UNIT: ±3344' NW
HIGH OCCUPANCY BUILDING UNIT: 1001'+
DESIGNATED OUTSIDE ACTIVITY AREA: 1001'+
PUBLIC ROAD: 3266' S (CR 46)
ABOVEGROUND UTILITY: 534' SE
RAILROAD: ±2928' NW
PROPERTY LINE: 512' W

SURFACE LOCATION

LAT: 40.32791°N
LONG: 104.79101°W
PDOP: 1.3
ELEV: 4699'
1/4, 1/4: SW1/4NW1/4

BOTTOM HOLE

LAT: 40.32965°N
LONG: 104.81154°W

LEGEND

- = ALIQUOT MONUMENT AS DESCRIBED
- = CALCULATED POSITION

SHEET 1 OF 2

Kyle E. Rutz—On behalf of Lat40°, Inc.
Colorado Licensed Professional
Land Surveyor No. 38307

DATE: 11/27/2013
PROJECT#: 2013063



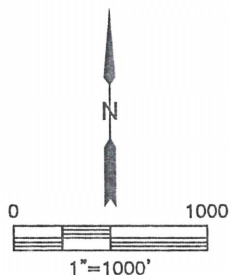
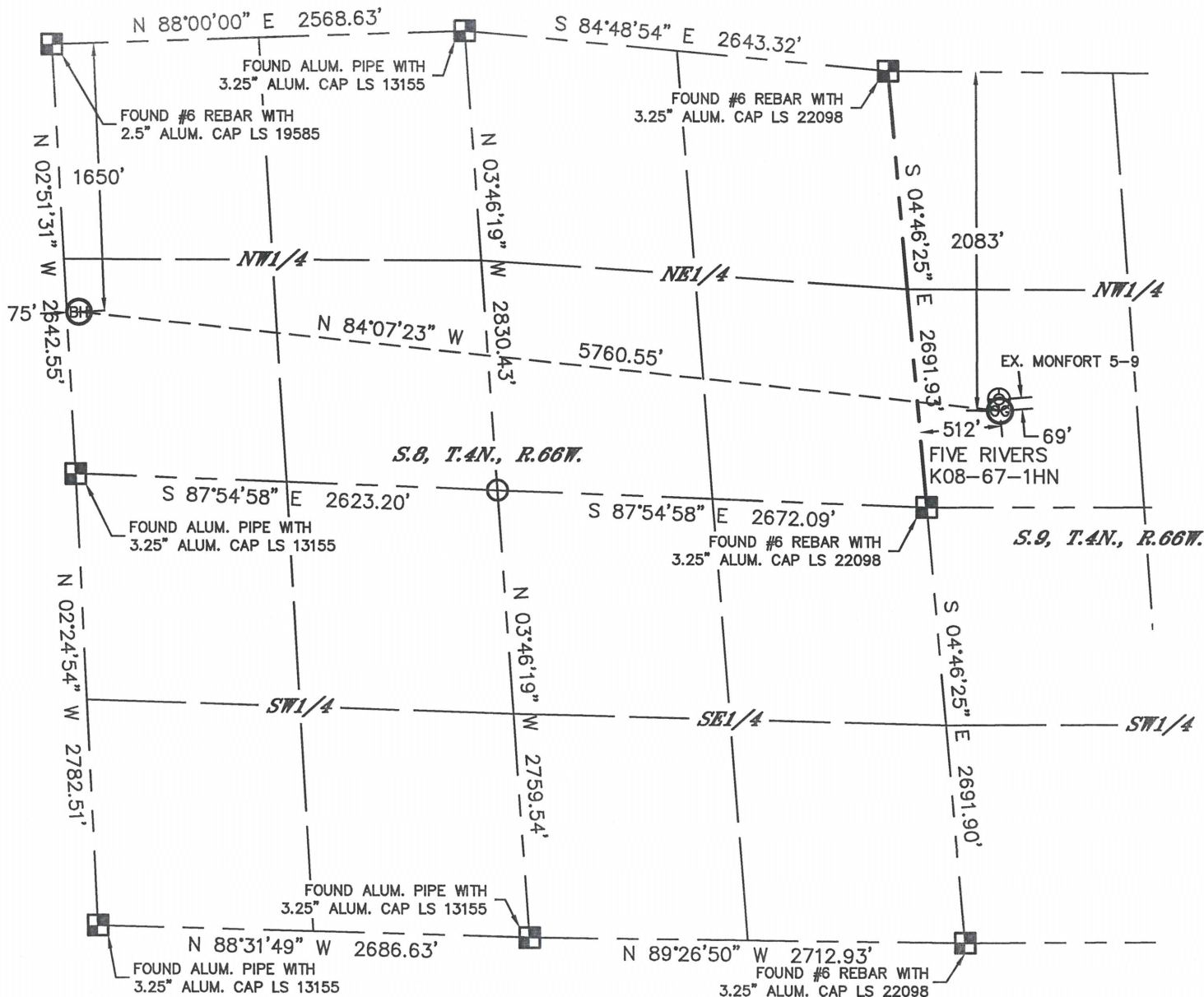


Lat40°, Inc. 1635 Foxtrail Drive, Suite 325 Loveland, CO 970-776-3321

WELL LOCATION CERTIFICATE

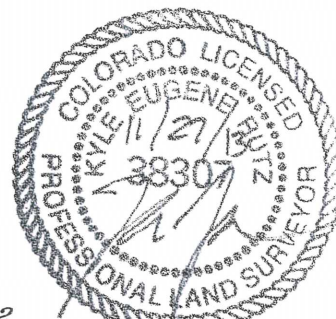
THIS MAP DOES NOT REPRESENT A BOUNDARY SURVEY

SECTION: 9
TOWNSHIP: 4N
RANGE: 66W



LEGEND

- = ALIQUOT MONUMENT AS DESCRIBED
- = CALCULATED POSITION



SHEET 2 OF 2

Kyle E. Rutz—On behalf of Lat40°, Inc.
Colorado Licensed Professional
Land Surveyor No. 38307

DATE: 11/27/2013
PROJECT#: 2013063

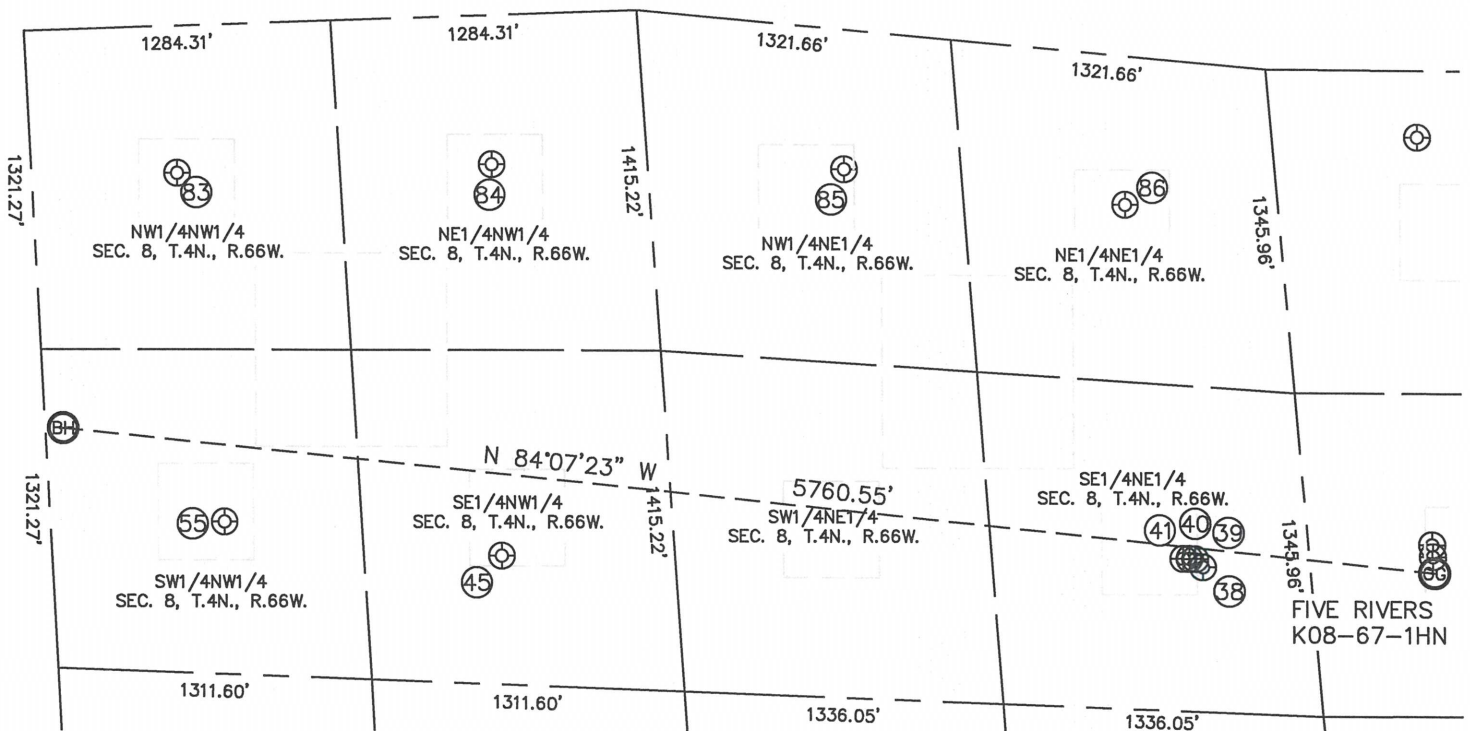


Lat40°, Inc. 1635 Foxtrail Drive, Suite 325 Loveland, CO 970-776-3321

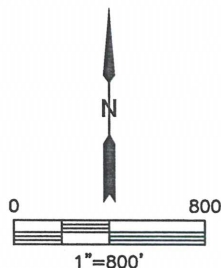
SITE SKETCH

FIVE RIVERS K08-67-1HN

SECTION: 9
TOWNSHIP: 4N
RANGE: 66W



WELL NO.	WELL NAME	SHL FOOTAGE				SHL LAT°	SHL LONG°	PDOP	ELEV (FT.)	1/4/1/4
38	MONFORT GILCREST K 8-8	2080	FNL	443	FEL	40.32799	-104.79445	1.7	4698	SENE
39	FIVE RIVERS K08-17D	2050	FNL	472	FEL	40.32808	-104.79457	1.7	4698	SENE
40	FIVE RIVERS K08-22D	2051	FNL	497	FEL	40.32808	-104.79466	1.8	4698	SENE
41	FIVE RIVERS K08-07D	2053	FNL	521	FEL	40.32808	-104.79474	1.8	4698	SENE
45	ED KAM 2-23	2241	FNL	1880	FWL	40.32816	-104.80498	1.4	4703	SENW
55	ED KAM 1-21	2061	FNL	727	FWL	40.32857	-104.80914	1.9	4717	SWNW
83	SHABLE R K 8-4	611	FNL	609	FWL	40.33254	-104.80978	2.0	4715	NWNW
84	SHABLE K 8-3	619	FNL	1926	FWL	40.33261	-104.80506	1.4	4714	NENW
85	KAMMERZELL 2-8	577	FNL	1794	FEL	40.33253	-104.79976	1.8	4698	NWNE
86	KAMMERZELL 1-8	614	FNL	634	FEL	40.33211	-104.79555	2.1	4698	NENE



DATE: 3/14/2014
PROJECT#: 2013063