

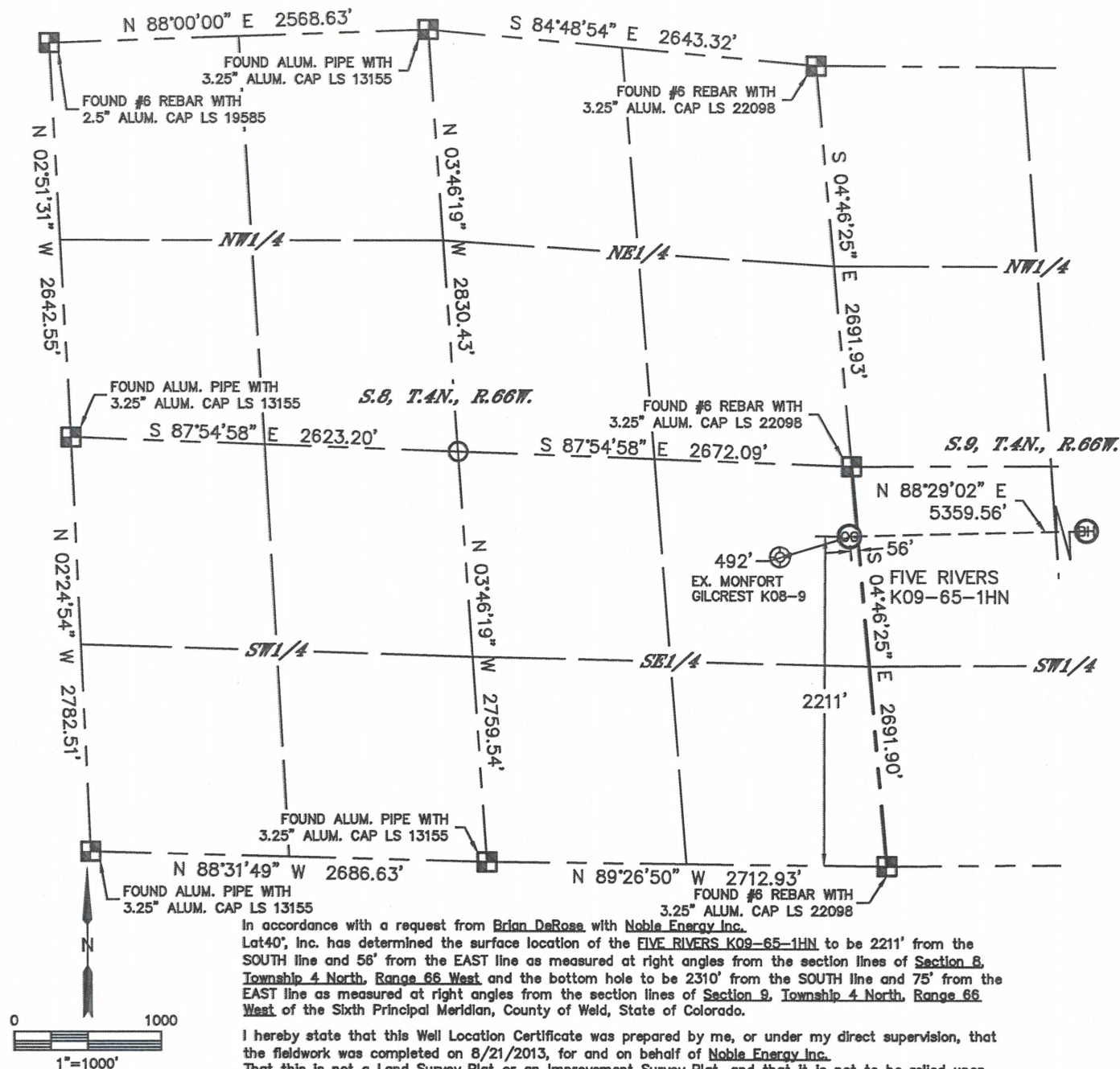


Lat40°, Inc. 1635 Foxtrail Drive, Suite 325 Loveland, CO 970-776-3321

WELL LOCATION CERTIFICATE

THIS MAP DOES NOT REPRESENT A BOUNDARY SURVEY

SECTION: 8
TOWNSHIP: 4N
RANGE: 66W



In accordance with a request from Brian DeRose with Noble Energy Inc. Lat40°, Inc. has determined the surface location of the FIVE RIVERS K09-65-1HN to be 2211' from the SOUTH line and 56' from the EAST line as measured at right angles from the section lines of Section 8, Township 4 North, Range 66 West and the bottom hole to be 2310' from the SOUTH line and 75' from the EAST line as measured at right angles from the section lines of Section 9, Township 4 North, Range 66 West of the Sixth Principal Meridian, County of Weld, State of Colorado.

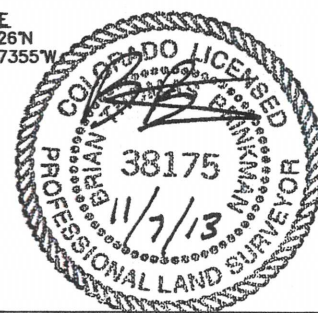
I hereby state that this Well Location Certificate was prepared by me, or under my direct supervision, that the fieldwork was completed on 8/21/2013, for and on behalf of Noble Energy Inc. That this is not a Land Survey Plat or an Improvement Survey Plat, and that it is not to be relied upon for establishment of fence, building, or other future improvement lines.

NOTE:

- 1) Bearings shown are Grid Bearings of the Colorado State Plane Coordinate System, North Zone, North American Datum 1983/2007. The lineal dimensions as contained herein are based upon the "U.S. Survey Foot."
 - 2) Ground elevations are based on an observed GPS elevation (NAVD 1988 DATUM).
 - 3) IMPROVEMENTS: See LOCATION DRAWING for all visible Improvements within 500' of disturbed area.
 - 4) SURFACE USE: RANGELAND
 - 5) INSTRUMENT OPERATOR: BRIAN ROTTINGHAUS
 - 6) NEAREST EXISTING WELL: MONFORT GILCREST K08-9, 492'
- NEAREST CULTURAL ITEMS:
BUILDING: ±1450' E
BUILDING UNIT: ±2645' SE
HIGH OCCUPANCY BUILDING UNIT: 1001'+
DESIGNATED OUTSIDE ACTIVITY AREA: 1001'+
PUBLIC ROAD: 2200' S (CR 46)
ABOVEGROUND UTILITY: 408' SE
RAILROAD: ±3676' NW
PROPERTY LINE: 56' E

SURFACE LOCATION
LAT: 40.32499°N
LONG: 104.79277°W
PDOP: 1.6
ELEV: 4700'
1/4, 1/4: NE1/4SE1/4

BOTTOM HOLE
LAT: 40.32526°N
LONG: 104.77355°W



LEGEND

- = ALIQUOT MONUMENT AS DESCRIBED
- = CALCULATED POSITION

SHEET 1 OF 2

Brian T. Brinkman—On behalf of Lat40°, Inc.
Colorado Licensed Professional Land Surveyor No. 38175
DATE: 11/07/2013
PROJECT#: 2013063

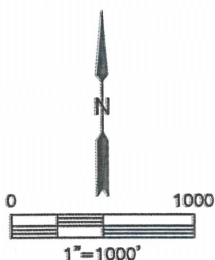
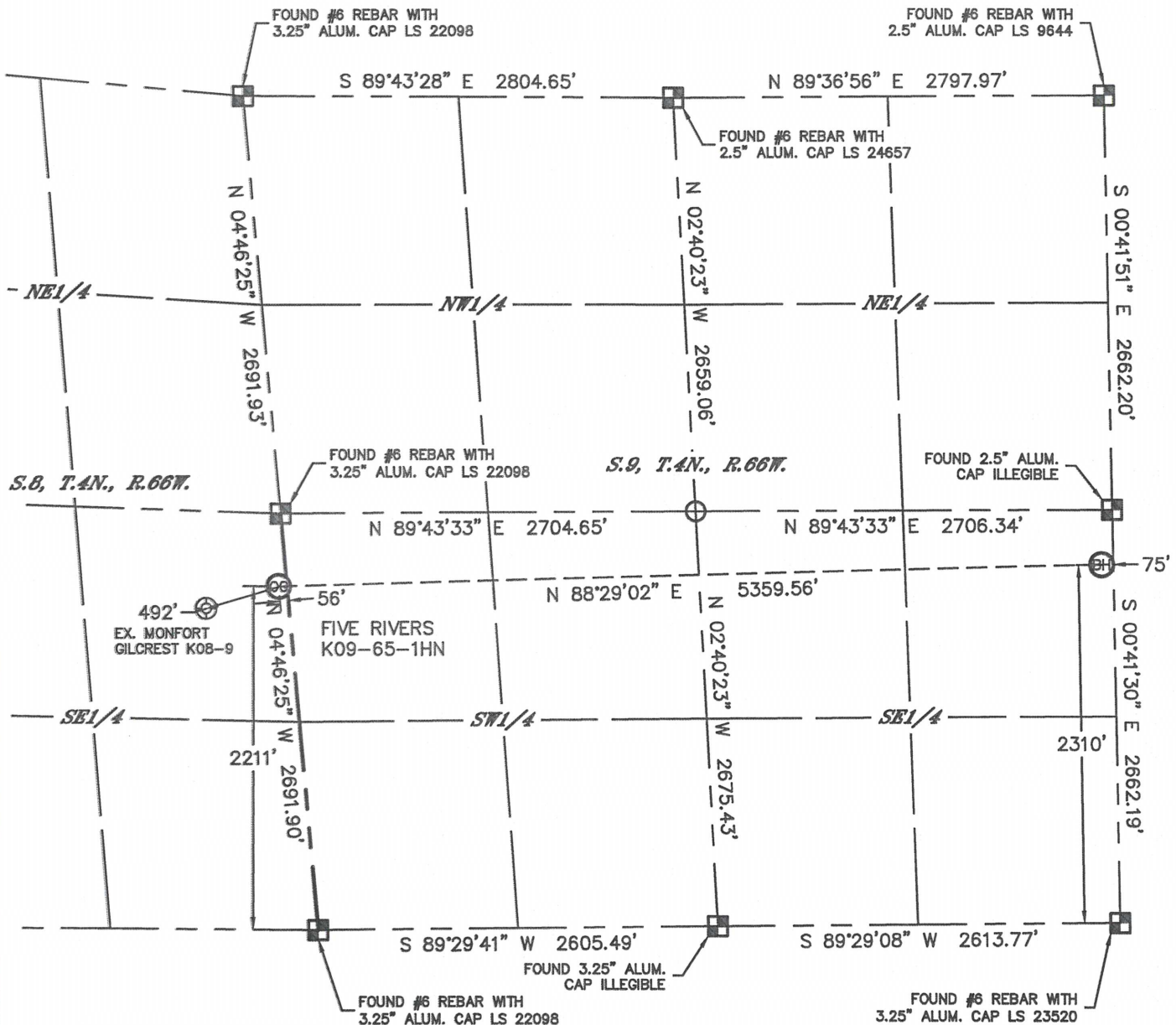


Lat40°, Inc. 1635 Foxtrail Drive, Suite 325 Loveland, CO 970-776-3321

WELL LOCATION CERTIFICATE

SECTION: 8
TOWNSHIP: 4N
RANGE: 66W

THIS MAP DOES NOT REPRESENT A BOUNDARY SURVEY



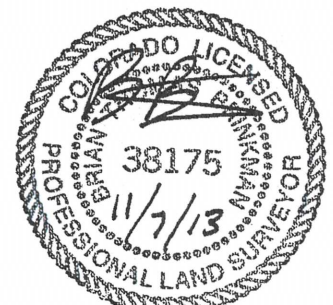
LEGEND

- = ALIQUOT MONUMENT AS DESCRIBED
- = CALCULATED POSITION

SHEET 2 OF 2

Brian T. Brinkman—On behalf of Lat40°, Inc.
Colorado Licensed Professional
Land Surveyor No. 38175

DATE: 11/07/2013
PROJECT#: 2013063



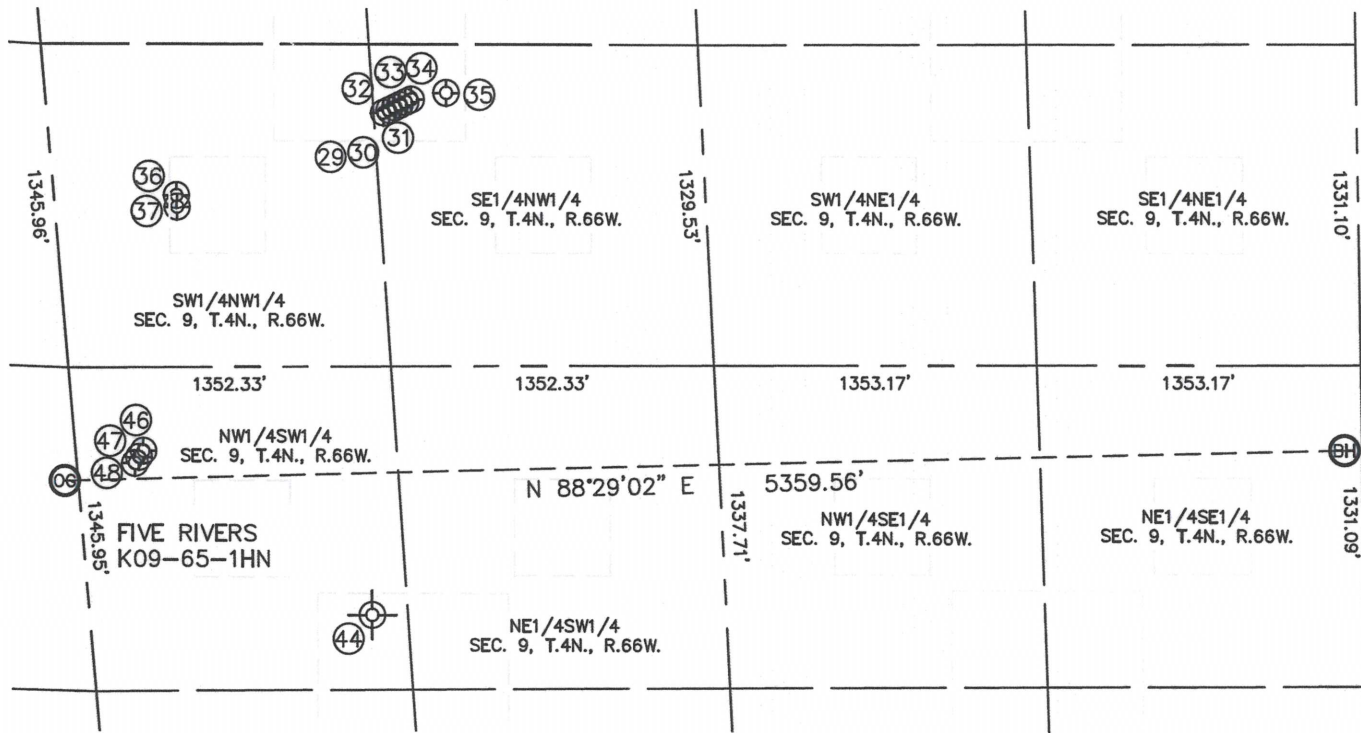


Lat40°, Inc. 1635 Foxtrail Drive, Suite 325 Loveland, CO 970-776-3321

SITE SKETCH

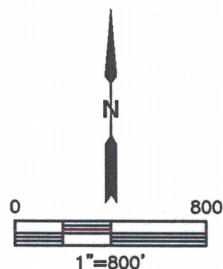
FIVE RIVERS K09-65-1HN

SECTION: 8
TOWNSHIP: 4N
RANGE: 66W



WELL NO.	WELL NAME	SHL FOOTAGE				SHL LAT°	SHL LONG°	PDOP	ELEV (FT.)	1/4/1/4
29	FIVE RIVERS K 9-19	1617	FNL	1409	FWL	40.32915	-104.78791	1.8	4699	SENW
30	FIVE RIVERS K 9-24D	1607	FNL	1433	FWL	40.32918	-104.78783	2.0	4699	SENW
31	FIVE RIVERS USX K 9-21D	1595	FNL	1456	FWL	40.32921	-104.78775	1.8	4699	SENW
32	FIVE RIVERS USX K 9-7D	1584	FNL	1479	FWL	40.32924	-104.78767	1.8	4698	SENW
33	FIVE RIVERS USX K 9-18D	1573	FNL	1503	FWL	40.32927	-104.78758	1.8	4699	SENW
34	FIVE RIVERS USX K 9-2D	1562	FNL	1526	FWL	40.32930	-104.78750	1.8	4699	SENW
35	UPRC 9-3I6	1533	FNL	1675	FWL	40.32938	-104.78697	1.8	4699	SENW
36	FIVE 31-9	1965	FNL	513	FWL	40.32823	-104.79104	1.6	4699	SWNW
37	MONFORT 5-9	2014	FNL	512	FWL	40.32810	-104.79103	1.5	4699	SWNW
44	UPRR PAN AM 01-61 (P&A)	1650	FSL	1180	FWL	40.32421	-104.79012	NA	4727	NWSW
46	UPCR 9-11I6	2337	FSL	283	FWL	40.32532	-104.79158	1.8	4700	NWSW
47	UPCR 9-12I6	2311	FSL	262	FWL	40.32526	-104.79165	1.7	4700	NWSW
48	UPRC 9-14I6	2287	FSL	243	FWL	40.32519	-104.79171	2.1	4701	NWSW

NOTE: THE ABANDONED WELL DATA SHOWN IN RED ABOVE WAS OBTAINED FROM COGCC SCOUT CARDS.



DATE: 2/25/2014
PROJECT#: 2013063