

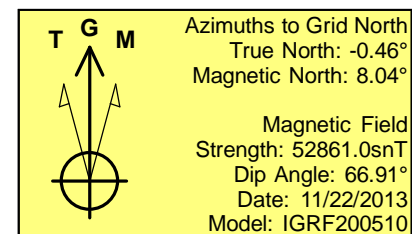
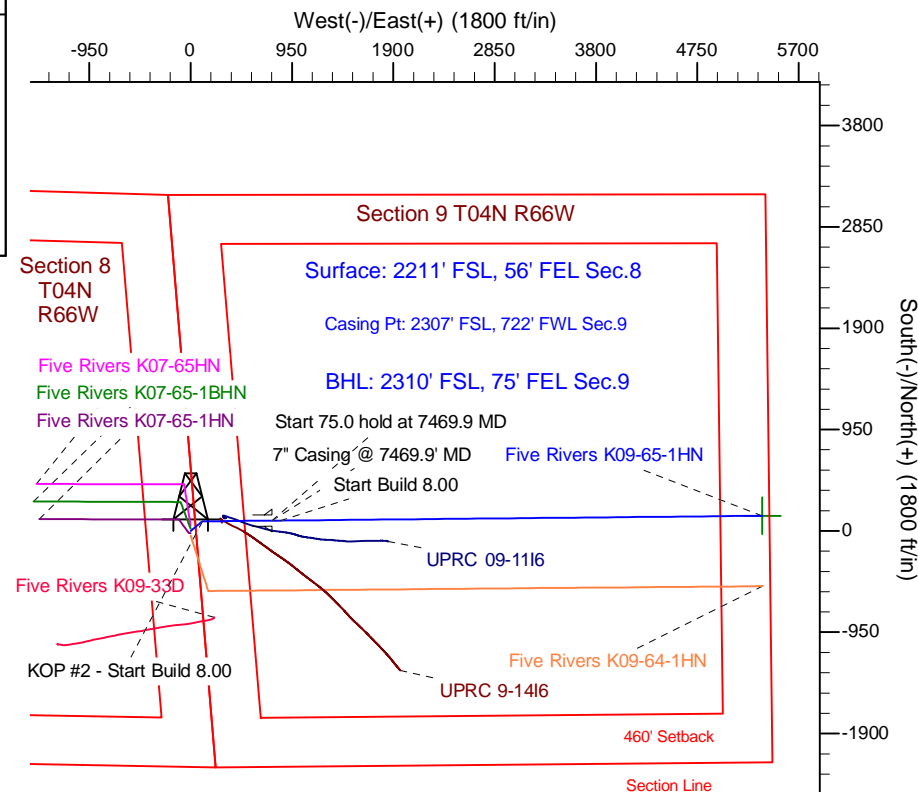
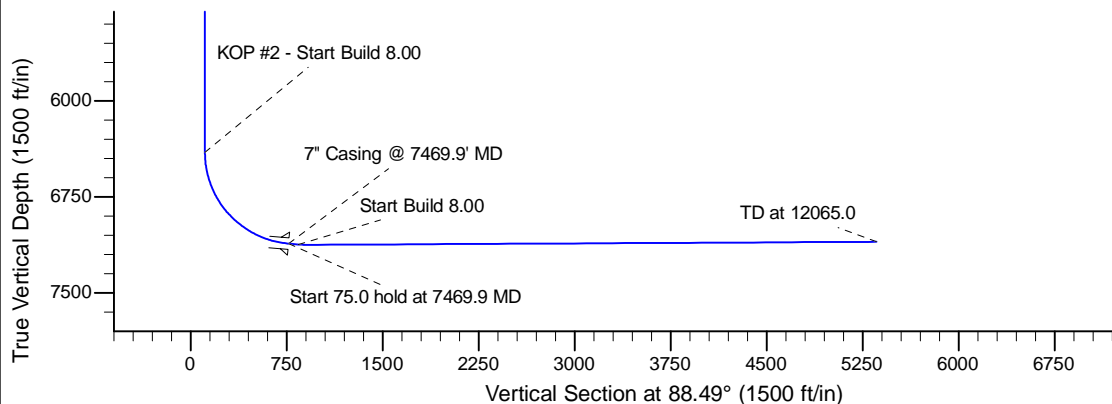
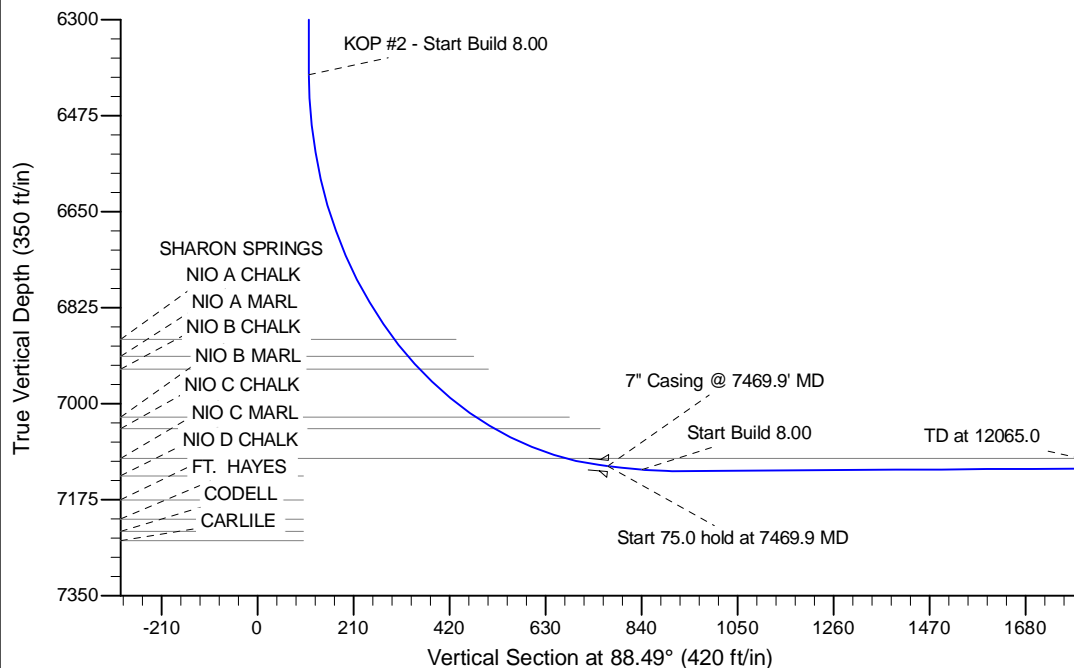
Project: Wattenberg Field
 Site: K (Sec.8-T04N-R66W) Weld County, CO
 Well: Five Rivers K09-65-1HN
 Wellbore: Original Drilling
 Design: APD - Rev 0

Northern Region Drilling - Working

Geodetic System: US State Plane 1983
 Datum: North American Datum 1983
 Ellipsoid: GRS 1980
 Zone: Colorado Northern Zone
 System Datum: Mean Sea Level

SECTION DETAILS

Sec	MD	Inc	Azi	TVD	+N/-S	+E/-W	Dleg	TFace	VSec	Target
1	0.0	0.00	0.00	0.0	0.0	0.0	0.00	0.00	0.0	
2	2200.0	0.00	0.00	2200.0	0.0	0.0	0.00	0.00	0.0	
3	2500.7	6.01	50.71	2500.2	10.0	12.2	2.00	50.71	12.5	
4	3556.2	6.01	50.71	3549.8	80.0	97.8	0.00	0.00	99.9	
5	3856.9	0.00	0.00	3850.0	90.0	110.0	2.00	180.00	112.3	
6	6407.4	0.00	0.00	6400.5	90.0	110.0	0.00	0.00	112.3	
7	7469.9	85.00	89.44	7114.0	96.4	763.7	8.00	89.44	766.0	
8	7544.9	85.00	89.44	7120.5	97.2	838.5	0.00	0.00	840.7	
9	7611.2	90.30	89.44	7123.2	97.8	904.6	8.00	0.00	906.9	
10	12065.0	90.30	89.44	7099.9	141.7	5358.1	0.00	0.00	5360.0	Five Rivers K09-65-1HN BHL 2310'FSL, 75'FEL



WELL DETAILS: Five Rivers K09-65-1HN					
Ground Level: 4700.0					
0.0	0.0	Northing 1362021.03	Easting 3197186.73	Latitude 40.324990	Longitude -104.792770
Plan: APD - Rev 0 (Five Rivers K09-65-1HN/Original Drilling)					
Created By: Shailey Jewell			Date: 10/14, March 06 2014		
OK to submit with 2A as per Noble Drilling					
3/07/2014 12:50					