

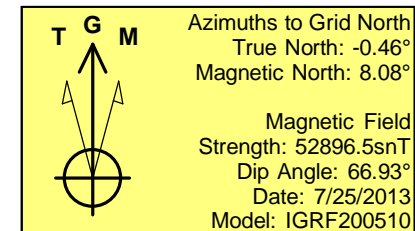
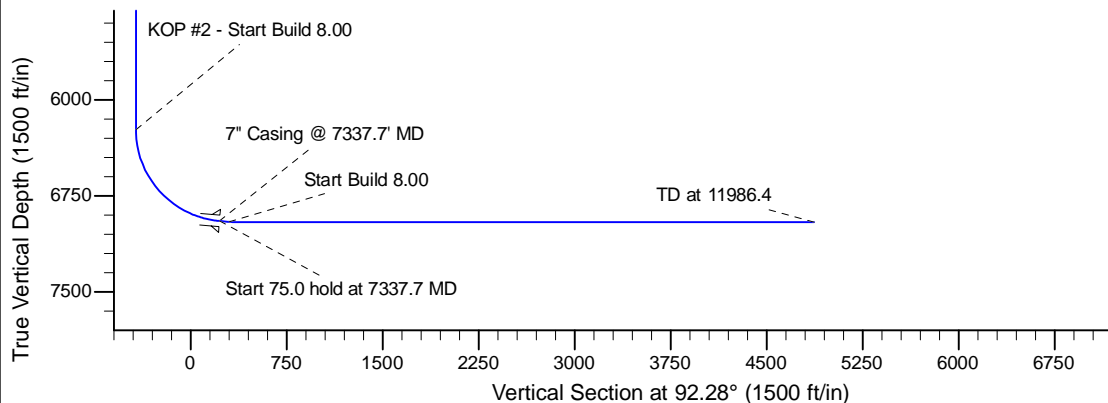
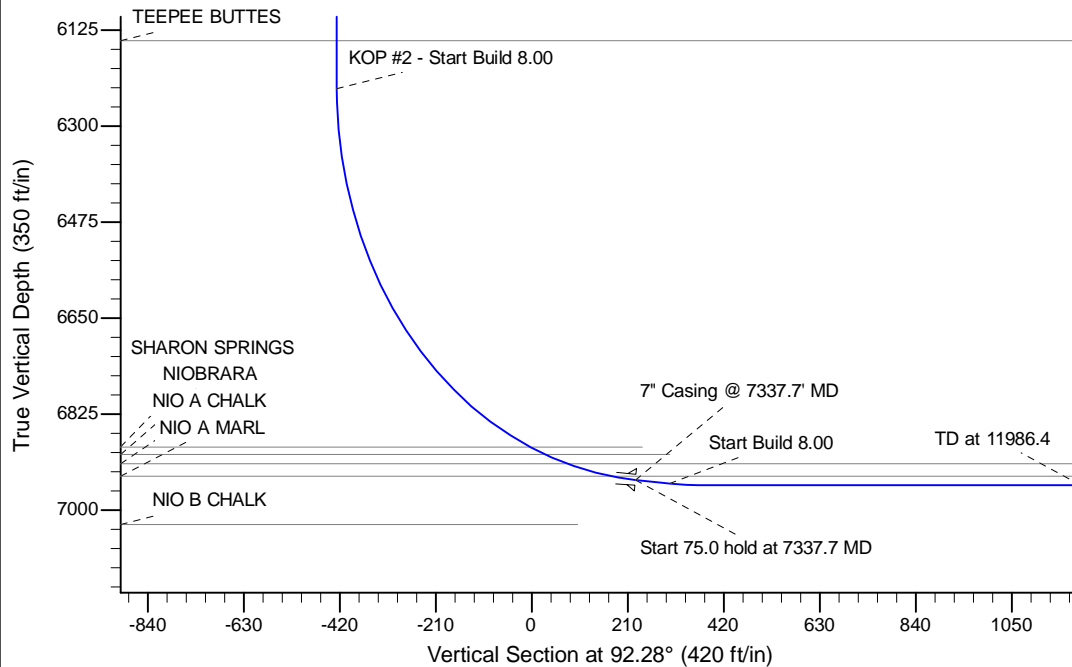
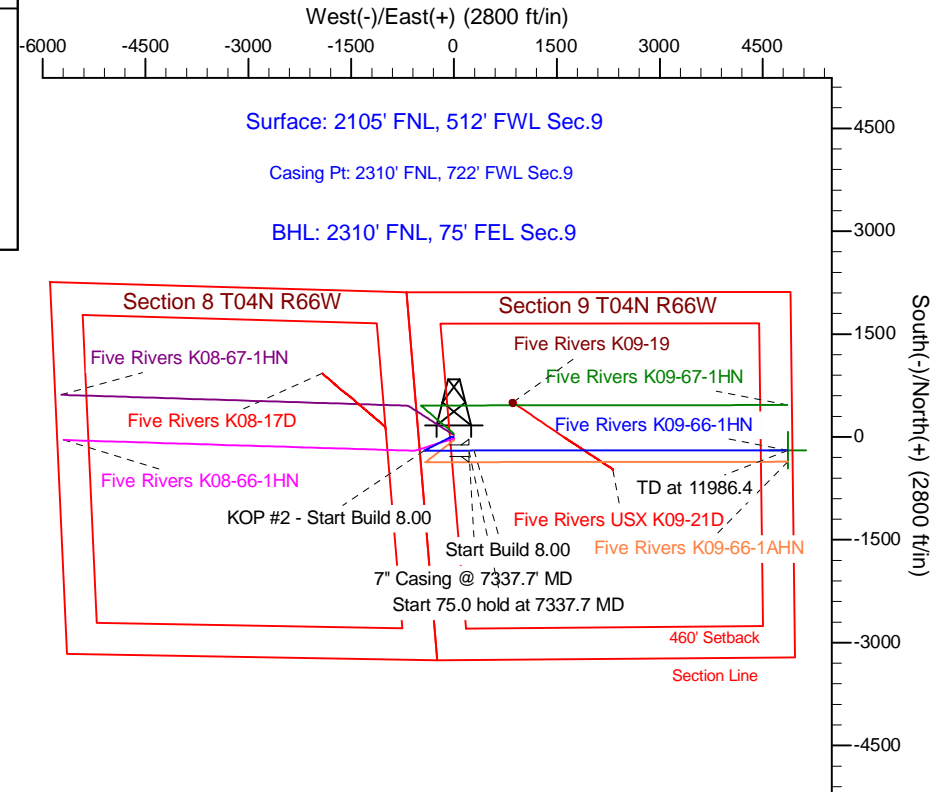
Project: Wattenberg Field
 Site: K (Sec.9-T04N-R66W) Weld County, CO
 Well: Five Rivers K09-66-1HN
 Wellbore: Original Drilling
 Design: APD - Rev 0

Northern Region Drilling - Working

Geodetic System: US State Plane 1983
 Datum: North American Datum 1983
 Ellipsoid: GRS 1980
 Zone: Colorado Northern Zone
 System Datum: Mean Sea Level

SECTION DETAILS

Sec	MD	Inc	Azi	TVD	+N/-S	+E/-W	Dleg	TFace	Vsect	Target
1	0.0	0.00	0.00	0.0	0.0	0.0	0.00	0.00	0.0	
2	2000.0	0.00	0.00	2000.0	0.0	0.0	0.00	0.00	0.0	
3	2300.0	6.00	270.00	2299.5	0.0	-15.7	2.00	270.00	-15.7	
4	2400.0	6.00	270.00	2398.9	0.0	-26.1	0.00	0.00	-26.1	
5	2736.3	11.50	242.93	2731.3	-15.3	-73.6	2.00	-50.77	-73.0	
6	4484.1	11.50	242.93	4444.0	-173.8	-383.8	0.00	0.00	-376.6	
7	5058.9	0.00	0.00	5015.0	-200.0	-435.0	2.00	180.00	-426.7	
8	6275.2	0.00	0.00	6231.3	-200.0	-435.0	0.00	0.00	-426.7	
9	7337.7	85.00	89.93	6944.7	-199.2	218.8	8.00	89.93	226.5	
10	7412.7	85.00	89.93	6951.3	-199.1	293.5	0.00	0.00	301.2	
11	7475.2	90.00	89.93	6954.0	-199.1	355.9	8.00	0.00	363.5	
12	11986.4	90.00	89.93	6954.0	-193.8	4867.1	0.00	0.00	4871.0	Five Rivers K09-66-1HN BHL 2310'FNL, 75'FEL



WELL DETAILS: Five Rivers K09-66-1HN				
Ground Level: 4699.0				
0.0	0.0	1363063.15	3197669.13	-104.791010
Plan: APD - Rev 0 (Five Rivers K09-66-1HN/Original Drilling)				
Created By: Shailey Jewell Date: 14:51, March 04 2014				
OK to submit with 2A as per Noble Drilling 3/04/2014 3:47				