

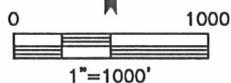
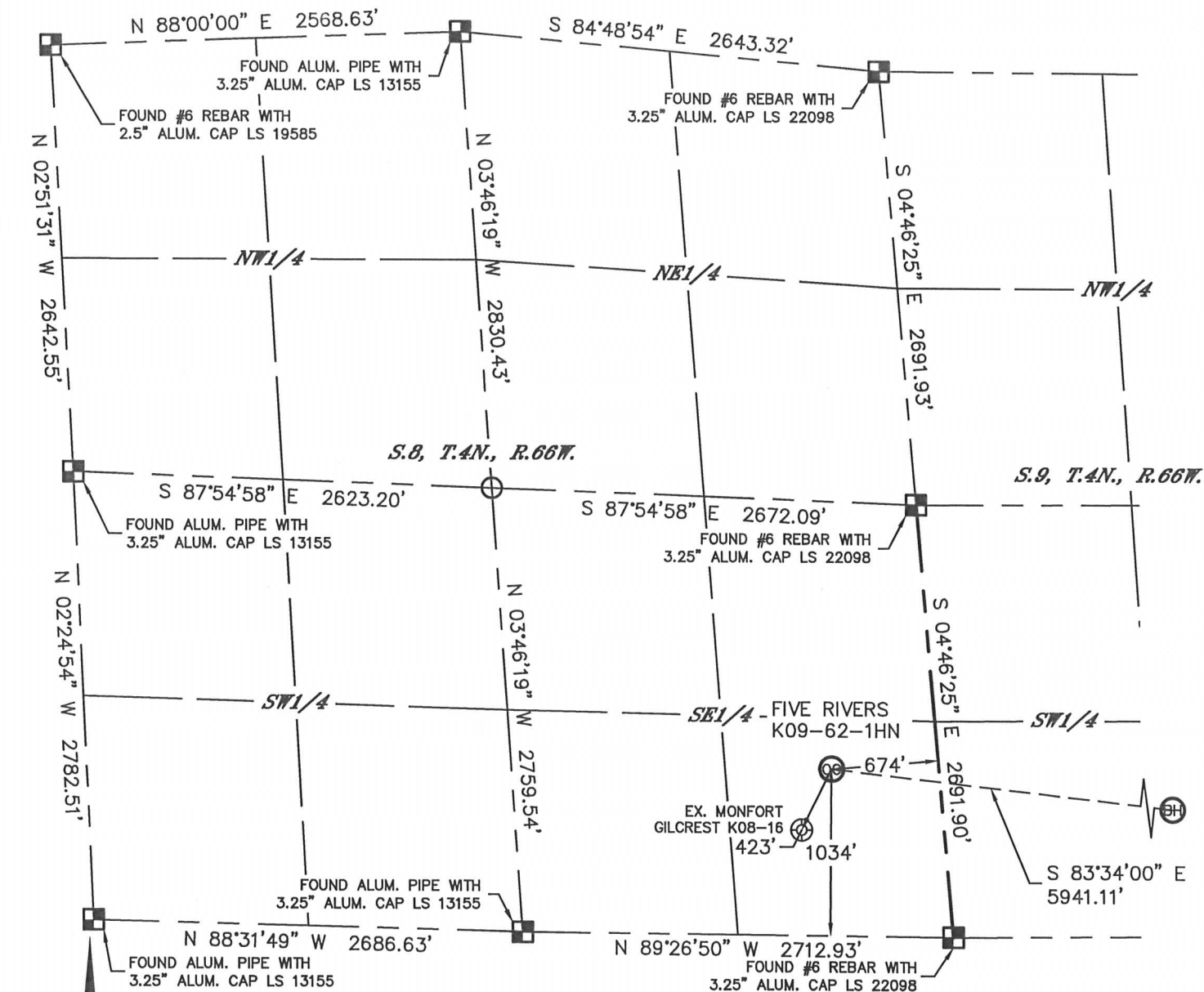


Lat40°, Inc. 1635 Foxtrail Drive, Suite 325 Loveland, CO 970-776-3321

WELL LOCATION CERTIFICATE

THIS MAP DOES NOT REPRESENT A BOUNDARY SURVEY

SECTION: 8
TOWNSHIP: 4N
RANGE: 66W



In accordance with a request from Brian DeRose with Noble Energy Inc. Lat40°, Inc. has determined the surface location of the FIVE RIVERS K09-62-1HN to be 1034' from the SOUTH line and 674' from the EAST line as measured at right angles from the section lines of Section 8, Township 4 North, Range 66 West and the bottom hole to be 330' from the SOUTH line and 75' from the EAST line as measured at right angles from the section lines of Section 9, Township 4 North, Range 66 West of the Sixth Principal Meridian, County of Weld, State of Colorado.

I hereby state that this Well Location Certificate was prepared by me, or under my direct supervision, that the fieldwork was completed on 8/21/2013, for and on behalf of Noble Energy Inc. That this is not a Land Survey Plat or an Improvement Survey Plat, and that it is not to be relied upon for establishment of fence, building, or other future improvement lines.

NOTE:

- 1) Bearings shown are Grid Bearings of the Colorado State Plane Coordinate System, North Zone, North American Datum 1983/2007. The lined dimensions as contained herein are based upon the "U.S. Survey Foot."
 - 2) Ground elevations are based on an observed GPS elevation (NAVD 1988 DATUM).
 - 3) IMPROVEMENTS: See LOCATION DRAWING for all visible Improvements within 500' of disturbed area.
 - 4) SURFACE USE: RANGELAND
 - 5) INSTRUMENT OPERATOR: BRIAN ROTTINGHAUS
 - 6) NEAREST EXISTING WELL: MONFORT GILCREST K08-16, 423'
- NEAREST CULTURAL ITEMS:
BUILDING: ±2233' NE
BUILDING UNIT: ±2366' SE
HIGH OCCUPANCY BUILDING UNIT: 1001'+
DESIGNATED OUTSIDE ACTIVITY AREA: 1001'+
PUBLIC ROAD: 1024' S (CR 46)
ABOVEGROUND UTILITY: 305' N
RAILROAD: ±4493' NW
PROPERTY LINE: 315' N

SURFACE LOCATION

LAT: 40.32179°N
LONG: 104.79467°W
PDOP: 1.6
ELEV: 4702'
1/4, 1/4: SE1/4SE1/4

BOTTOM HOLE

LAT: 40.31983°N
LONG: 104.77353°W

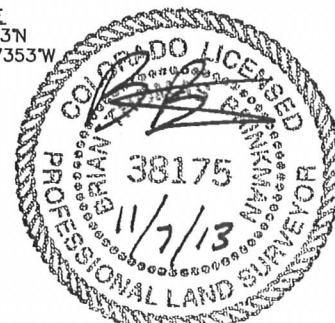
LEGEND

- = ALIQUOT MONUMENT AS DESCRIBED
- = CALCULATED POSITION

SHEET 1 OF 2

Brian T. Brinkman—On behalf of Lat40°, Inc.
Colorado Licensed Professional
Land Surveyor No. 38175

DATE: 11/7/2013
PROJECT#: 2013063



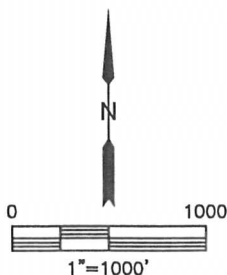
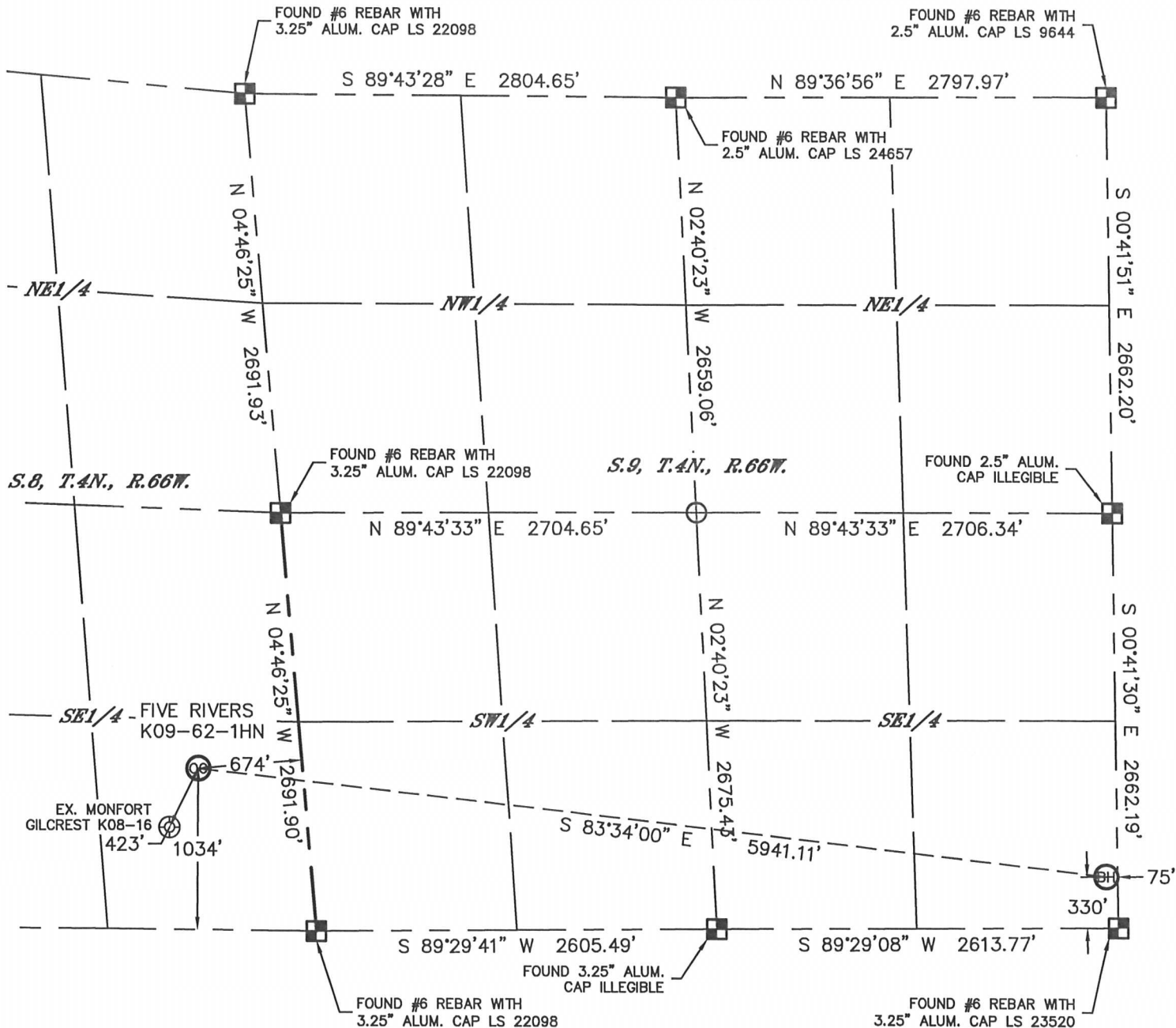


Lat40°, Inc. 1635 Foxtrail Drive, Suite 325 Loveland, CO 970-776-3321

WELL LOCATION CERTIFICATE

SECTION: 8
TOWNSHIP: 4N
RANGE: 66W

THIS MAP DOES NOT REPRESENT A BOUNDARY SURVEY



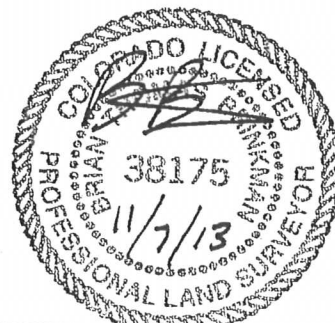
LEGEND

- = ALIQUOT MONUMENT AS DESCRIBED
- = CALCULATED POSITION

SHEET 2 OF 2

Brian T. Brinkman—On behalf of Lat40°, Inc.
Colorado Licensed Professional
Land Surveyor No. 38175

DATE: 11/7/2013
PROJECT#: 2013063



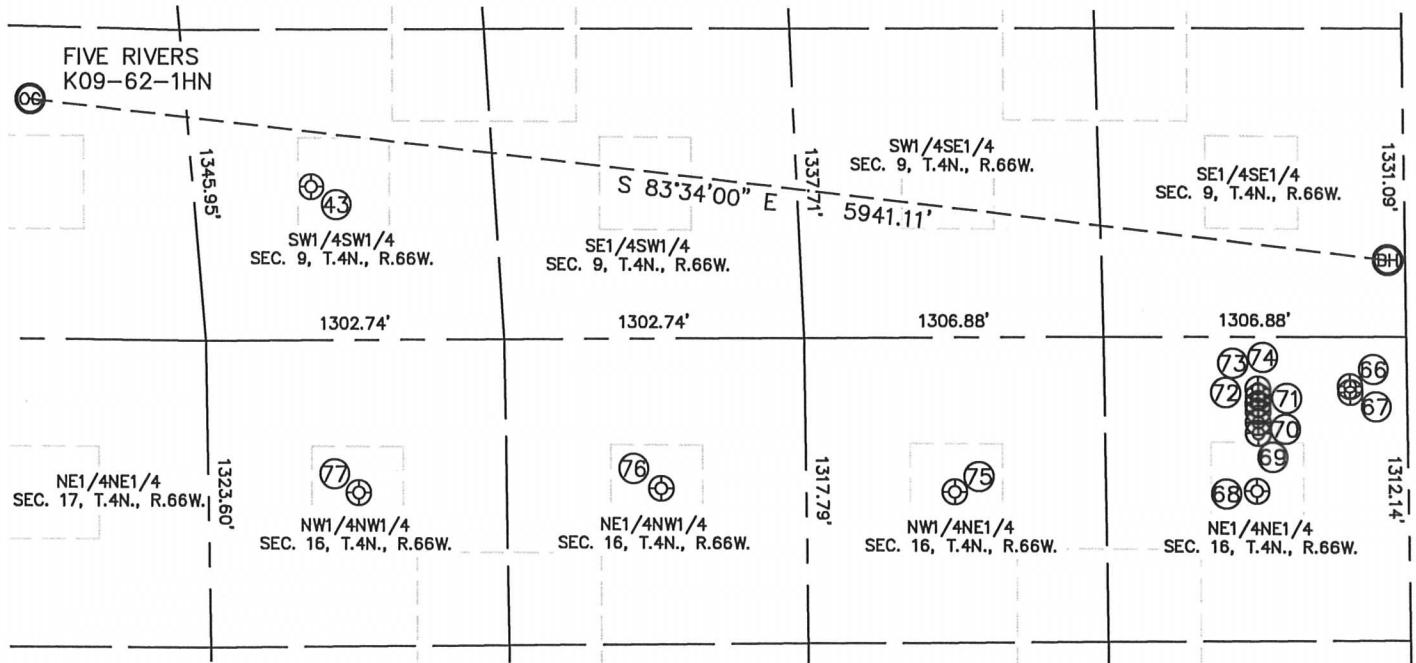


Lat40°, Inc. 1635 Foxtrail Drive, Suite 325 Loveland, CO 970-776-3321

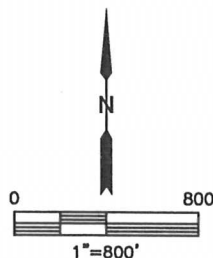
SITE SKETCH

FIVE RIVERS K09-62-1HN

SECTION: 8
TOWNSHIP: 4N
RANGE: 66W



WELL NO.	WELL NAME	SHL FOOTAGE				SHL LAT°	SHL LONG°	PDOP	ELEV (FT.)	1/4/1/4
43	MONFORT GILCREST K 9-13	662	FSL	514	FWL	40.32073	-104.79030	1.9	4733	SWSW
66	FIVE RIVERS K15-30D	215	FNL	246	FEL	40.31833	-104.77413	1.7	4731	NENE
67	FIVE RIVERS K15-31D	240	FNL	246	FEL	40.31827	-104.77413	1.7	4731	NENE
68	MONFORT GILCREST K 16-1	666	FNL	656	FEL	40.31710	-104.77559	1.7	4733	NENE
69	FIVE RIVERS K16-27D	417	FNL	646	FEL	40.31778	-104.77556	1.7	4733	NENE
70	FIVE RIVERS K 9-23D	370	FNL	646	FEL	40.31791	-104.77556	1.7	4732	NENE
71	UPRC 9-16F	322	FNL	646	FEL	40.31804	-104.77556	2.0	4732	NENE
72	UPRC 9-15F	290	FNL	646	FEL	40.31813	-104.77556	1.7	4733	NENE
73	UPRC 9-9F	258	FNL	645	FEL	40.31821	-104.77556	1.8	4733	NENE
74	UPRC 9-10F	225	FNL	645	FEL	40.31830	-104.77556	1.8	4732	NENE
75	KAWATA 2-16	666	FNL	1967	FEL	40.31709	-104.78030	1.8	4733	NWNE
76	MONFORT 2-30	647	FNL	1974	FWL	40.31714	-104.78488	1.8	4733	NENW
77	MONFORT 1-29	659	FNL	656	FWL	40.31710	-104.78960	2.4	4736	NWNW



DATE: 11/7/2013
PROJECT#: 2013063