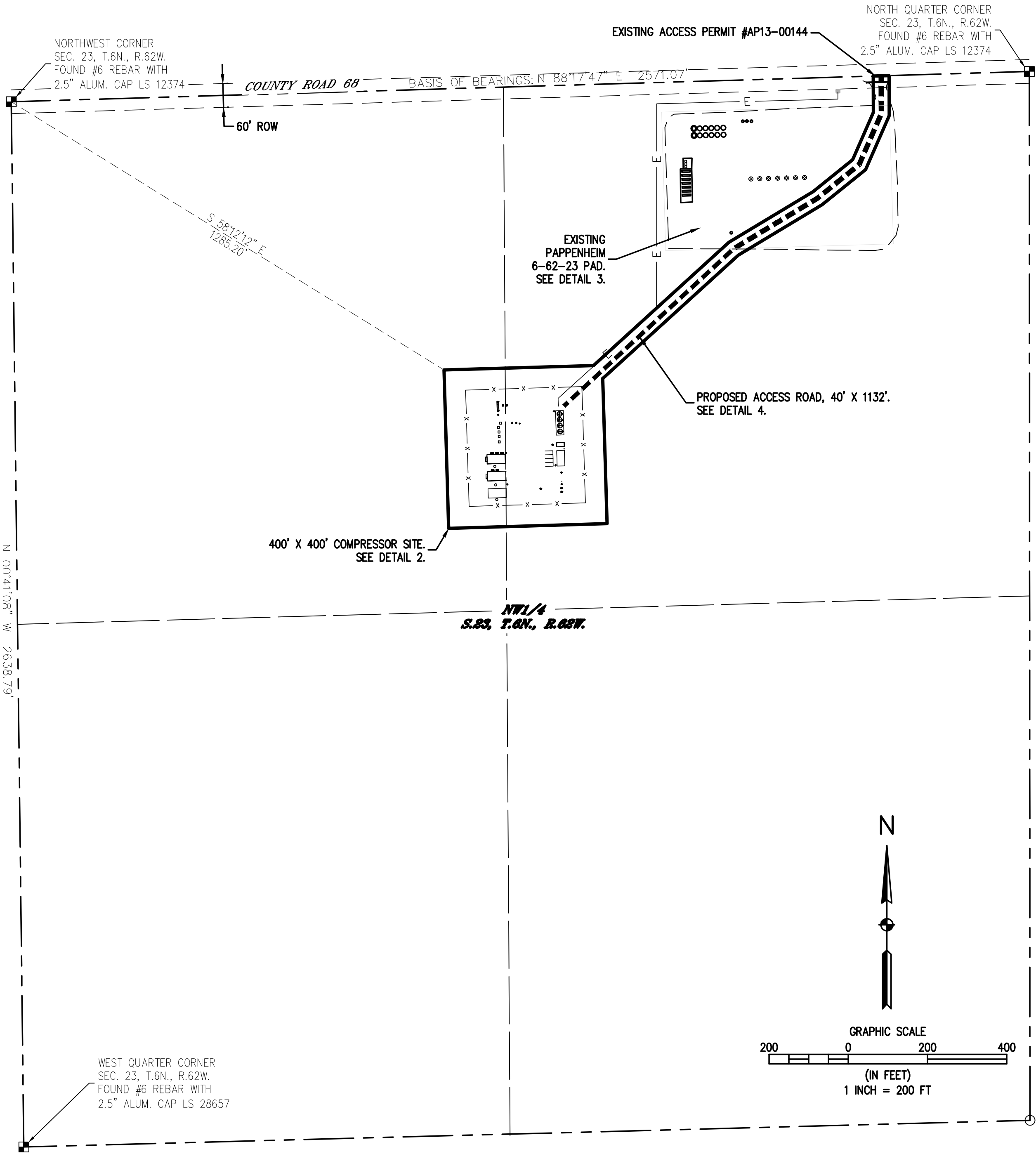
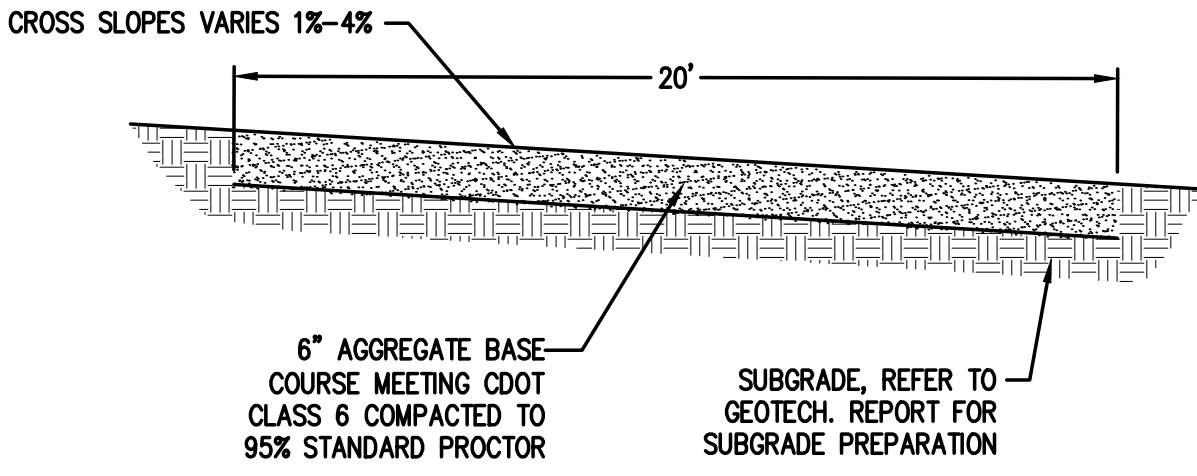


BRONCO COMPRESSOR STATION

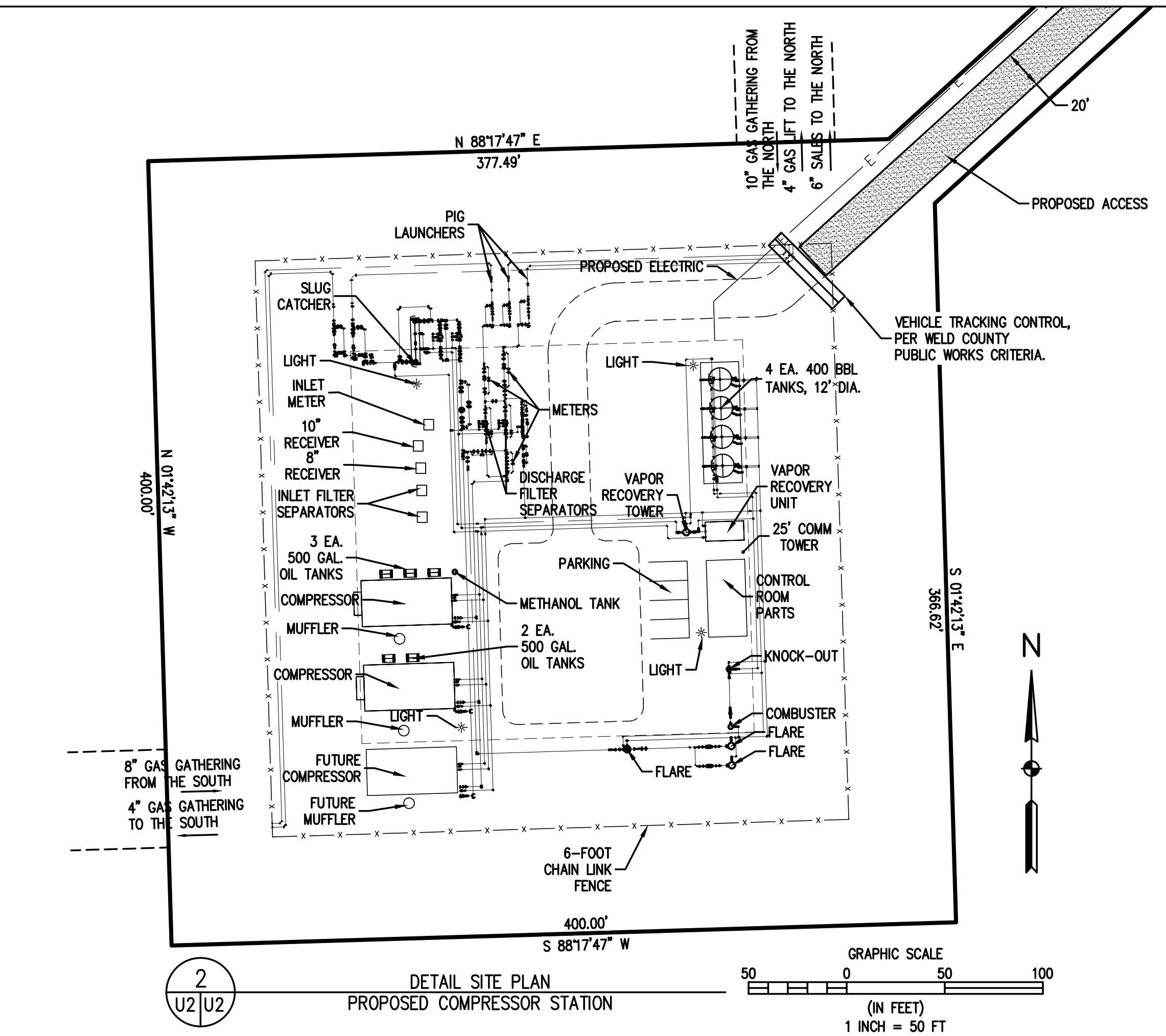
USE BY SPECIAL REVIEW USR13-0067
2 OF 2



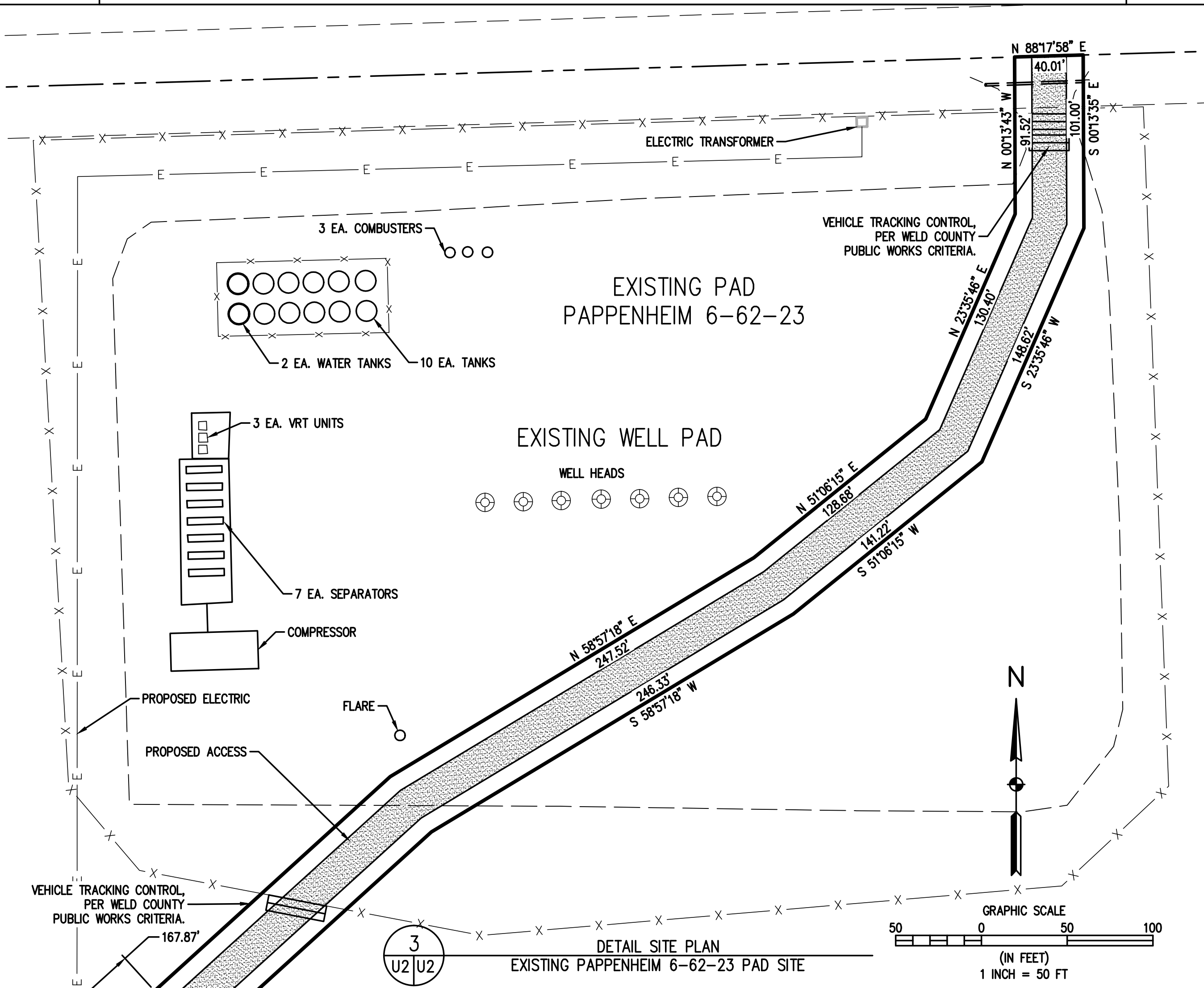
1 OVERALL SITE PLAN
U2 U2



4 ALL WEATHER ROAD TYPICAL SECTION
U2 U2
NOT TO SCALE



2 DETAIL SITE PLAN
U2 U2
PROPOSED COMPRESSOR STATION



3 DETAIL SITE PLAN
U2 U2
EXISTING PAPPENHEIM 6-62-23 PAD SITE

DESIGNED BY	DATE	PREPARED BY	REVISION	DESCRIPTION
MJW	12-23-13	MJW		PER COUNTY COMMENTS
DRWN BY				
CHECKED BY				

BILL BARRETT CORPORATION
WELD COUNTY
BRONCO COMPRESSOR STATION
SITE PLAN

FOR AND ON BEHALF OF	BASELINE CORPORATION
INITIAL SUBMITTAL	04/02/2014
DRAWING SIZE	24" X 36"
SURVEY FIRM	SURVEY DATE
JOB NO.	PL232
DRAWING NAME	PL232-USR-2014-4-1.dwg
SHEET	2 OF 2