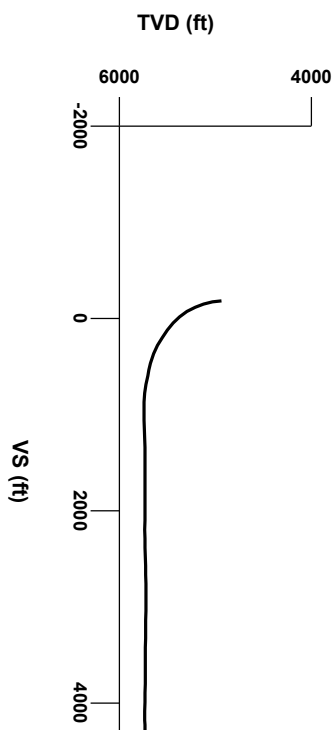


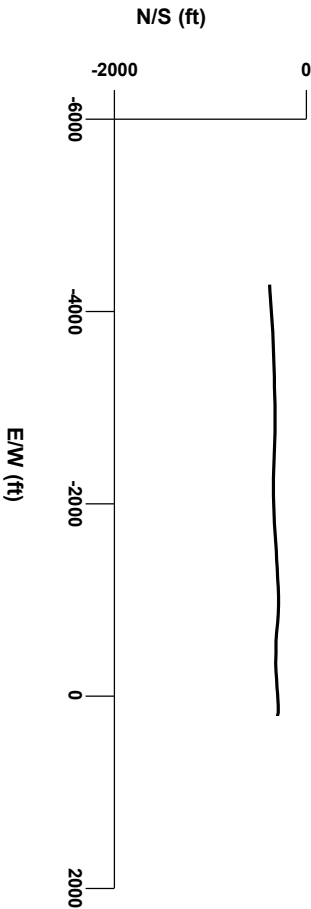
LOG created using Lplot VH Version 3.0, November 24, 2013, Copyright (C) 1999-2009 Pason Systems Corp.

OPERATOR: NOBLE ENERGY INC
WELL: TIMBRO STATE LD16-68-1HN
LOCATION: NENE SEC 16 T9N R58W
COUNTY: WELD
STATE: COLORADO
SPOT: 682' FNL; 290' FEL
ELEVATION: 4724' GR; 4748' KB
FIELD: WILDCAT
SPUD DATE: 11/17/2013
TD DATE: 11/24/2013
DATES LOGGED: 11/19/2013 - 11/24/2013
DEPTHS LOGGED: 4945' - 9870' MD
LOGGERS: LAURA KELLOGG; CONOR PESICKA
DRILLING FLUID: LSND
DRILLING RIG: H&P 273
API: 05-123-37493
LOG TYPE: HORIZONTAL
SCALE: 1:240 (5 inches per 100 feet)
REMARKS: WELLSITE GEOLOGIC SERVICES
 PROVIDED BY COLUMBINE LOGGING INC.



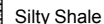
Survey Elevation

Survey Plan



6000

LITHOLOGIES



ENGINEERING SYMBOLS



Casing



Casing



Connection



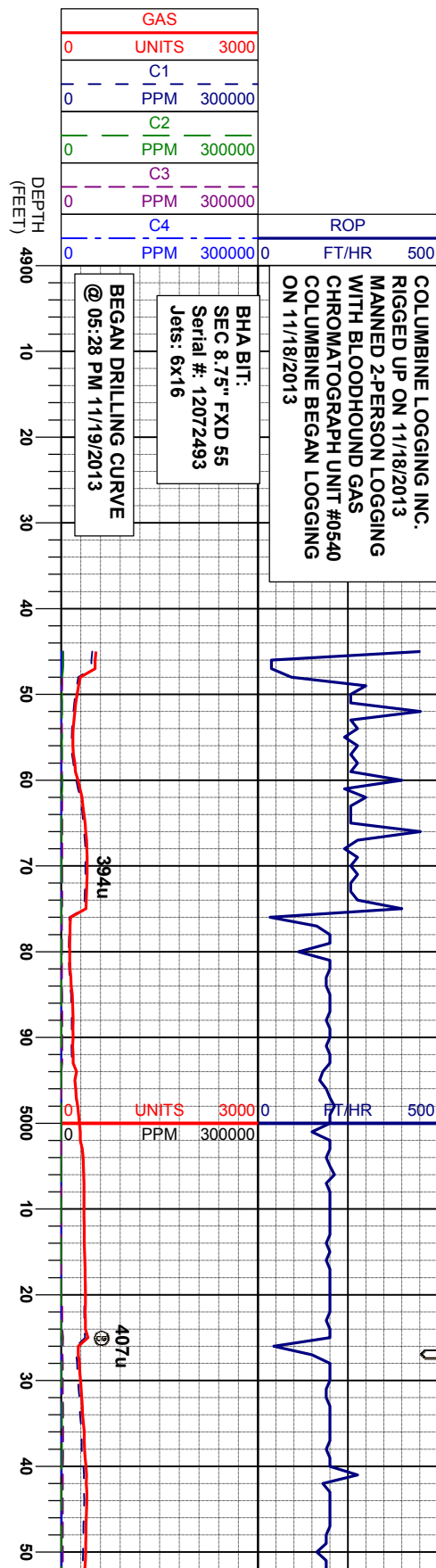
Connection Gas



Midnight Depth



Oil To Surface



COLUMBINE LOGGING INC.
RIGGED UP ON 11/18/2013
MANNED 2-PERSON LOGGING
WITH BLOODHOUND GAS
CHROMATOGRAPH UNIT #0540
COLUMBINE BEGAN LOGGING
ON 11/18/2013

BHA BIT:
SEC 8.75" FXD 55
Serial #: 12072493
Jets: 6x16

BEGAN DRILLING CURVE
@ 05:28 PM 11/19/2013

CUTTINGS LITHOLOGY

GAMMA RAY		
40	API	300

4900

MD	4966'
INC	0.6°
AZM	229.0°
TVD	4938.40'

WT IN 9.80/ OUT 9.80
VIS IN 34/ OUT 34

The ratings are based on 7 descriptors: None, Slight trace, Trace, Fair, Moderate, Good, and Excellent. The descriptor used is based on the loggers observations and best judgment of brilliance, color and longevity of the cut.

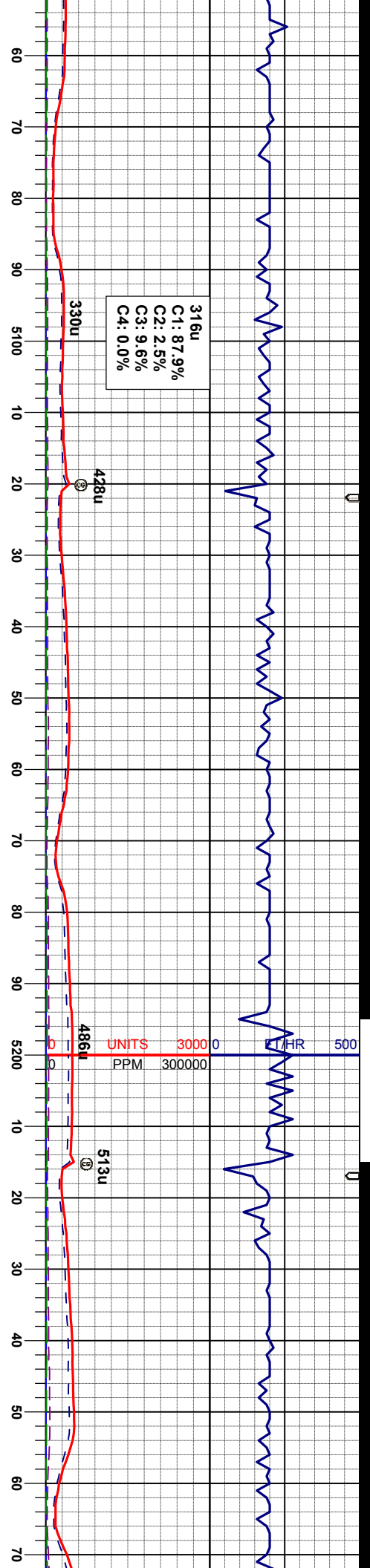
SLTYSH: Itgy-gy, sbalky-sbply, v sft - mod
firm, gt-rr sdy tex, arg cmt

SLTYSH: Itgy-gy, sbbiky-sbply, v sft - mod
firm, gt-sdy tex, spar ip, arg cmt, tr len ss

OIL SHOWS

SAMPLE PHOTOS





C1: 87.9%
C2: 2.5%
C3: 9.6%
C4: 0.0%

UNITS 3000 0
PPM 300000

MD 5060'
INC 10.5°
AZM 282.8°
TVD 5031.86'

WT IN 10.10/ OUT 10.10
VIS IN 34/ OUT 34

MD 5165'
INC 18.6°
AZM 278.8°
TVD 5123.74'

MD 5250'
INC 23.0°
AZM 268.6°
TVD 5212.55'

SLTYSH: lgy-gy, sbblky-sbply, v sft - mod
firm, gt- silty tex, sme bnd, arg cnt

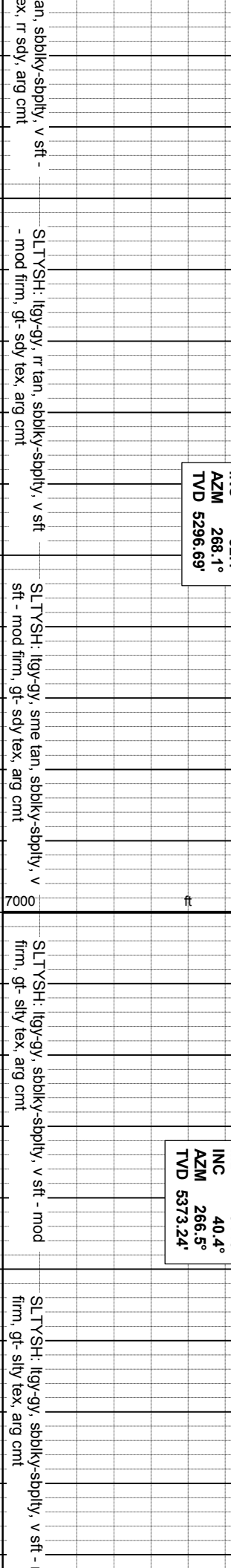
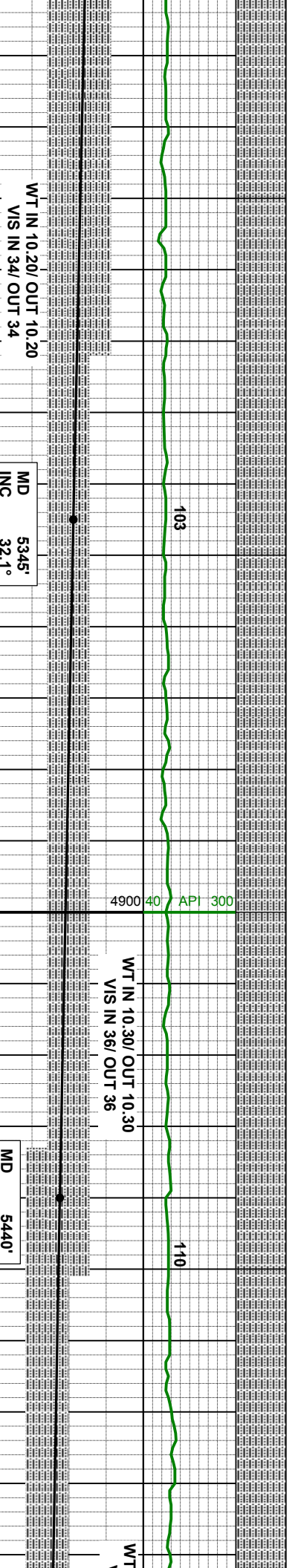
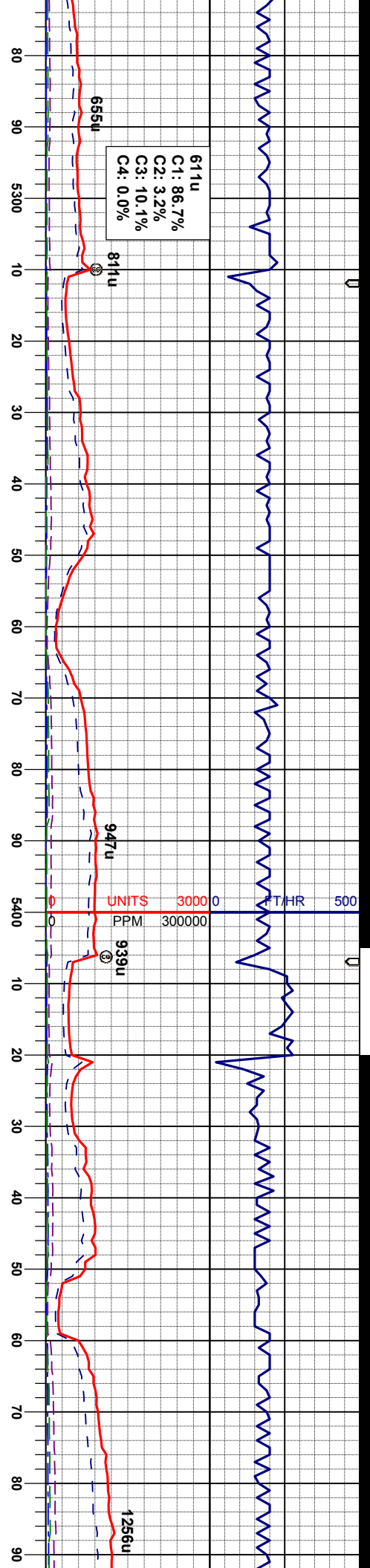
SLTYSH: lgy-gy, sbblky-sbply, v sft - mod
firm, gt- silty tex, rr sdy, sme bnd, arg cnt

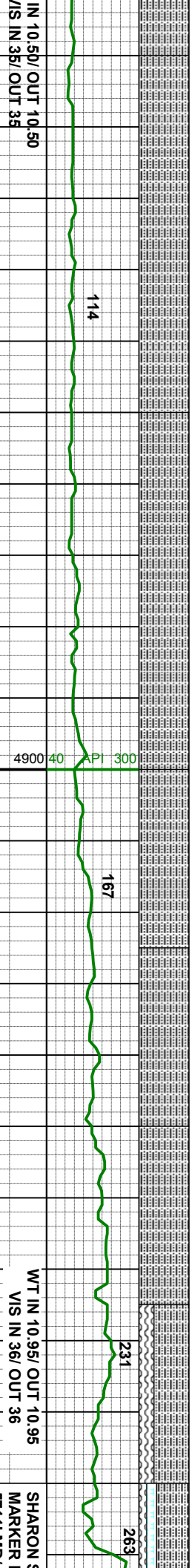
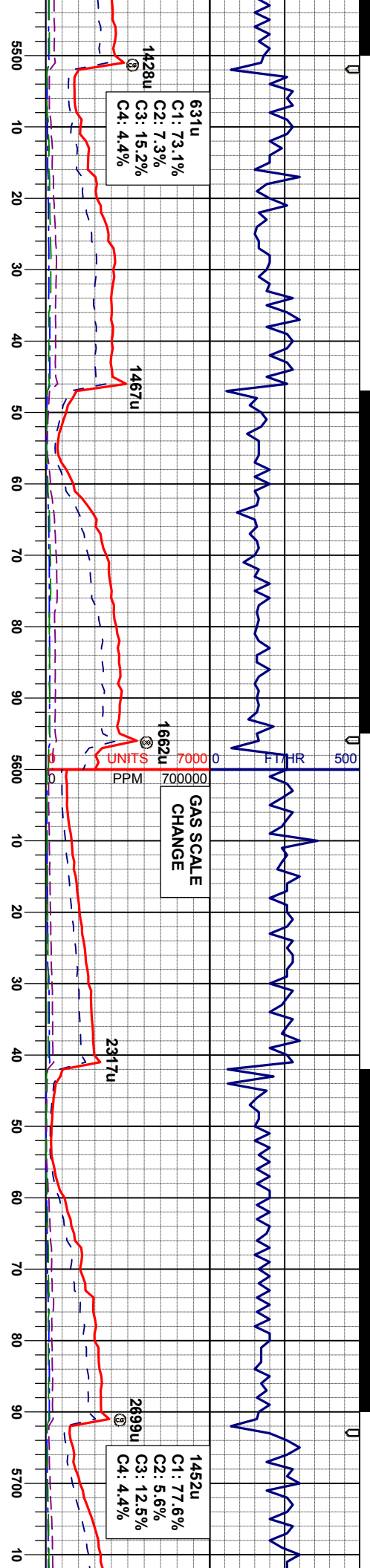
SLTYSH: lgy-gy, sme tan, sbblky-sbply, v
sft - mod firm, gt- silty tex, rr sdy, rr bnd, arg
cnt

SLTYSH: lgy-gy, sme tan, sbblky-sbply, v
sft - mod firm, gt- silty tex, rr sdy, rr bnd, arg
cnt

SLTYSH: lgy-gy, v sft - mod
firm, gt- silty tex, sme bnd, arg cnt







MD 5535'
INC 47.3°
AZM 266.3°
TVD 5441.71'

MD 5630'
INC 52.8°
AZM 266.9°
TVD 5502.69'

IN 10.5b/ OUT 10.50
/S IN 35/ OUT 35

SLTYSH: lty-gy, sbblky-sply, v sft - mod
firm, gt- sily tex, arg cnt

SLTYSH: lty-gy, sbblky-sply, v sft - mod
firm, gt- sily tex, arg cnt

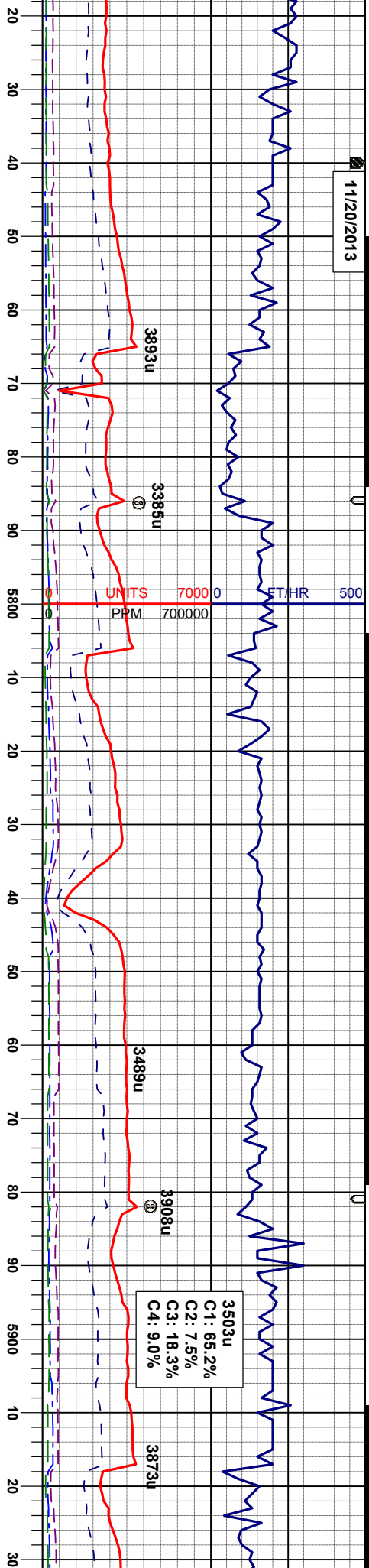
SLTYSH: gy-dkg, sbblky-sply, v sft -
mod firm, gt- sily tex, sme bnd, arg cnt

SLTYSH: gy-dkg, rr blk, sbblky-sply,
sme ply, v sft - mod firm, sm- sily tex, sme
bnd, arg cnt
BENT: lbrn - tan, ply, mod firm, sm-gt tex,
rr gr tex, tr pyr strg

SHARON 3
MARKER 1
5711' MD/

SLTYSH:
sme ply,
bnd, arg
CHK: lty
firm, mot
MRL: gy-
gt tex, str
BENT: lbrn
rr gr tex,

11/20/2013



SPRINGS
BED @
55549 TVD

NOBRARA TOP @
5729 MD/ 5559 TVD

NIO A CHALK @
5765 MD/ 5578 TVD

WT IN 11.00/ OUT 11.0
VIS IN 36/ OUT 36

NIO A MARL @
5814 MD/ 5635 TVD

MD 5724'
INC 57.4°
AZM 266.5°
TVD 5556.46'

MD 5819'
INC 60.8°
AZM 266.8°
TVD 5605.23'

MD 5914'
INC 68.9°
AZM 269.6°
TVD 5645.58'

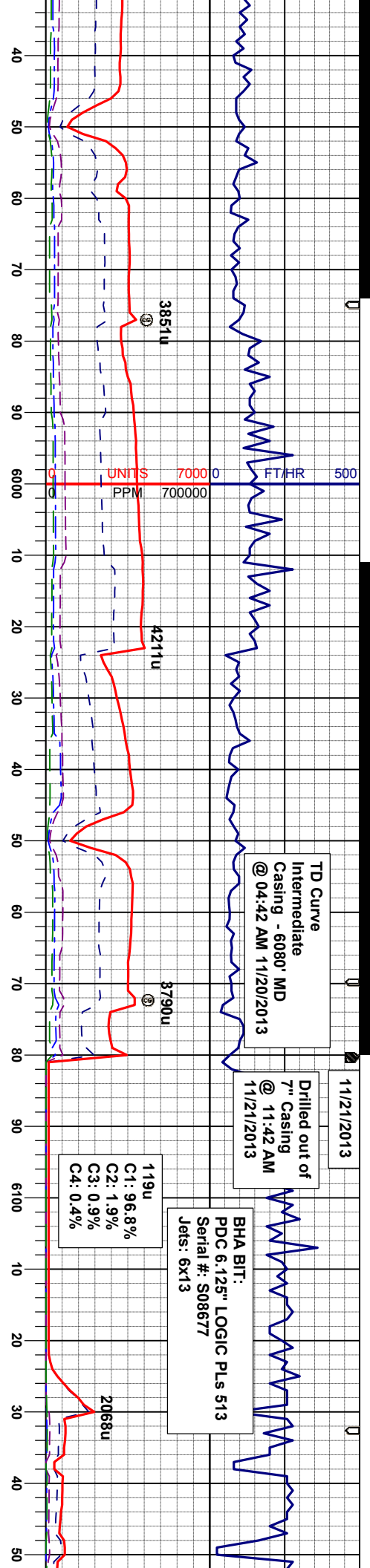
gy-dkgy, π blk, sbbkly-sbply,
v sft - mod firm, sm-sily tex, sme
unit
cm, sme wh, sbbkly, sft- mod
sm tex, sbvit lstr lp, v calc
gybrn, sbbkly-sbply, sft- firm, mot-
e bnd, v calc
m - tan, ply, mod firm, sm-gt tex,
r pyr strg

CHK: lgy-crm, sme wh, sbbkly, sft- mod
firm, v mot-sm tex, v calc
MRL: gy-gybrn, sbbkly-sbply, sft- firm, mot-
gt tex, sme bnd, rthy lstr, v calc, tr bent

CHK: lgy-crm, gy, wh, sbbkly, sft- mod
firm, v mot-sm tex, v calc
MRL: gy-gybrn, sbbkly-sbply, sft- firm, mot-
gt tex, sme bnd, rthy lstr, v calc, tr bent

MRL: gy-gybrn, sbbkly-sbply, sft- firm, mot-
gt tex, rthy lstr, v calc, tr bent
CHK: lgy-gy, sbbkly, sft- mod firm, v mot-
sme wxy tex, v calc

MRL: gy-gybrn, sbbkly-sbply
gt tex, rthy lstr, v calc
CHK: lgy-gy, sbbkly, sft- mo-
sme wxy tex, v calc



NIO B CHALK @
5977MD/ 5664TVD

WT IN 11.00/ OUT 11.00
VIS IN 36/ OUT 36

MD 6020'
INC 75.3°
AZM 271.2°
TVD 5678.15'

MD 6092'
INC 79.6°
AZM 270.9°
TVD 5693.79'

MD
INC
AZM
TVD

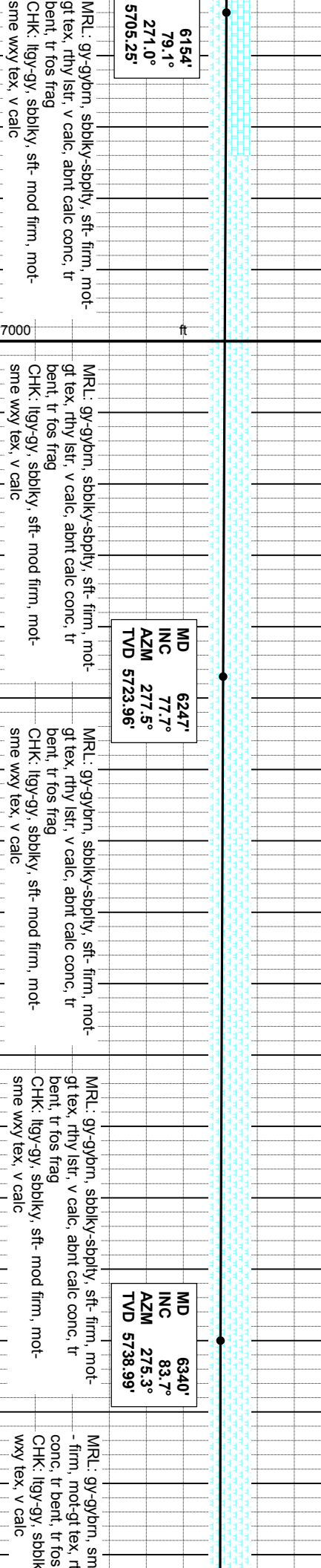
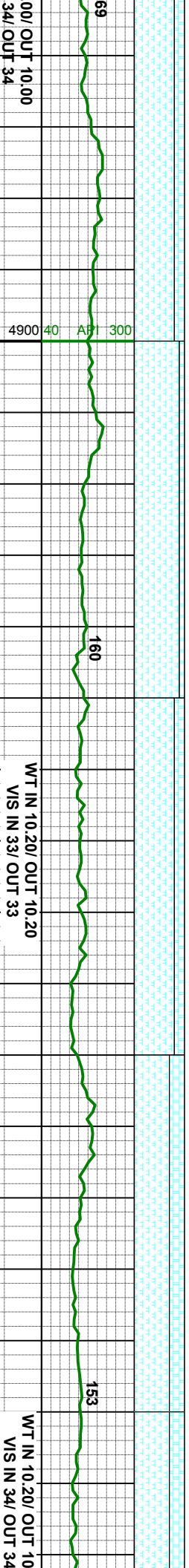
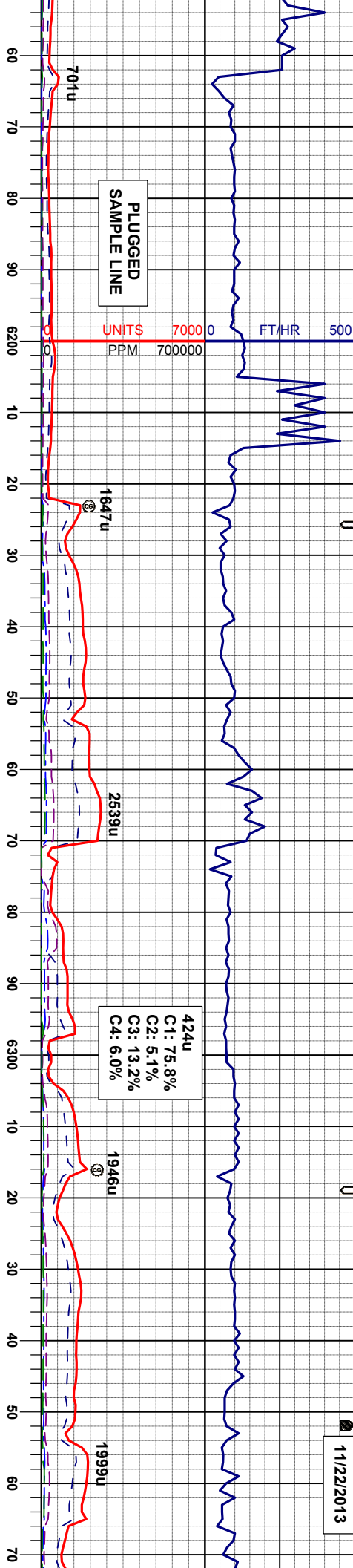
sft- firm, mot-
glt tex, rthy lstr, v calc, tr bent
MRL: gyl-gybm, sbblky-sbply, sft- firm, mot-
CHK: lly-gy, sbblky, sft- mod firm, mot-
sme wxy tex, v calc

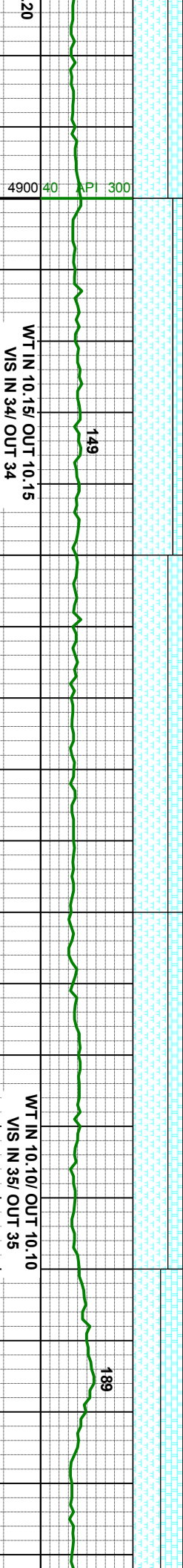
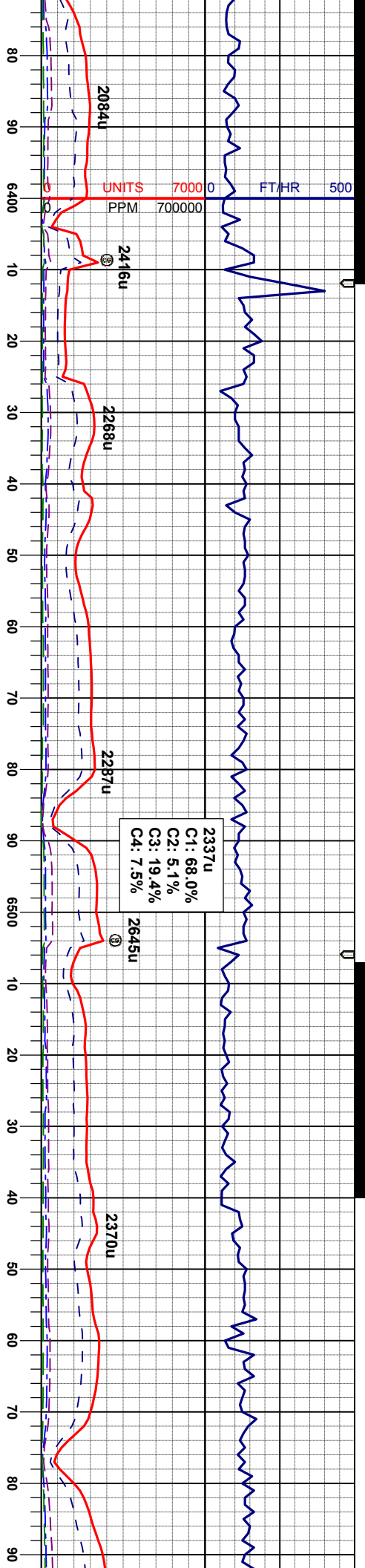
CHK: lly-gy, sbblky, sft- mod firm, mot-
sme wxy tex, v calc
MRL: gyl-gybm, sbblky-sbply, sft- firm, mot-
glt tex, rthy lstr, v calc, tr bent

CHK: lly-gy, sbblky, sft- mod firm, mot-
sme wxy tex, v calc
MRL: gyl-gybm, sbblky-sbply, sft- firm, mot-
glt tex, rthy lstr, v calc, tr bent

CHK: lly-gy, sbblky, sft- mod firm, mot-
sme wxy tex, v calc, tr bent
occ fos frag
MRL: gyl-gybm, sbblky-sbply, sft- firm, mot-
glt tex, rthy lstr, v calc, tr calc conc

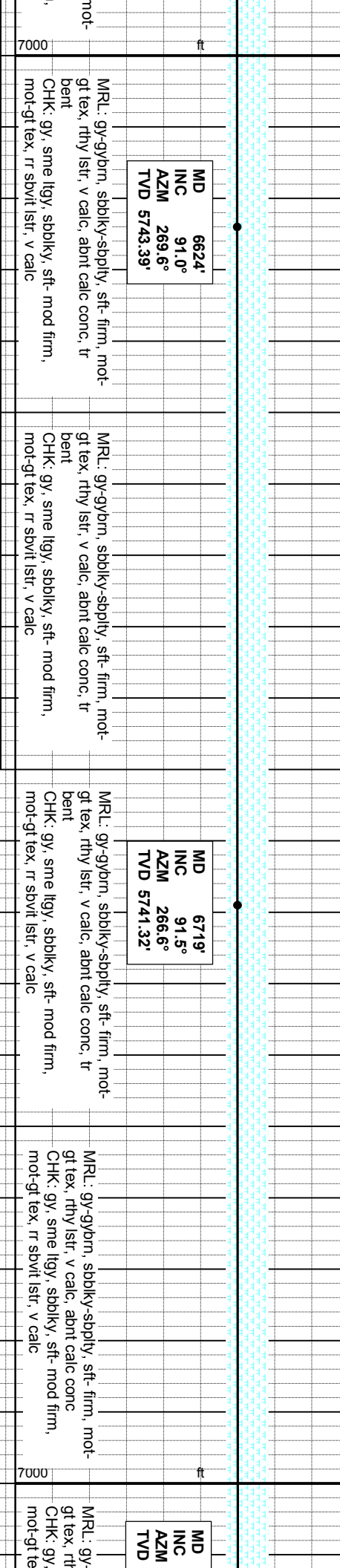
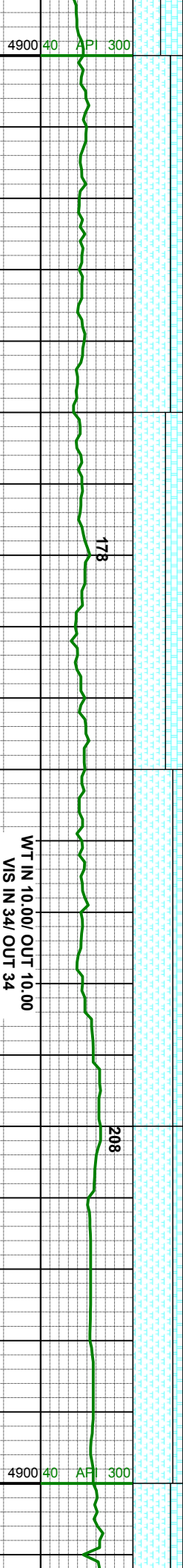
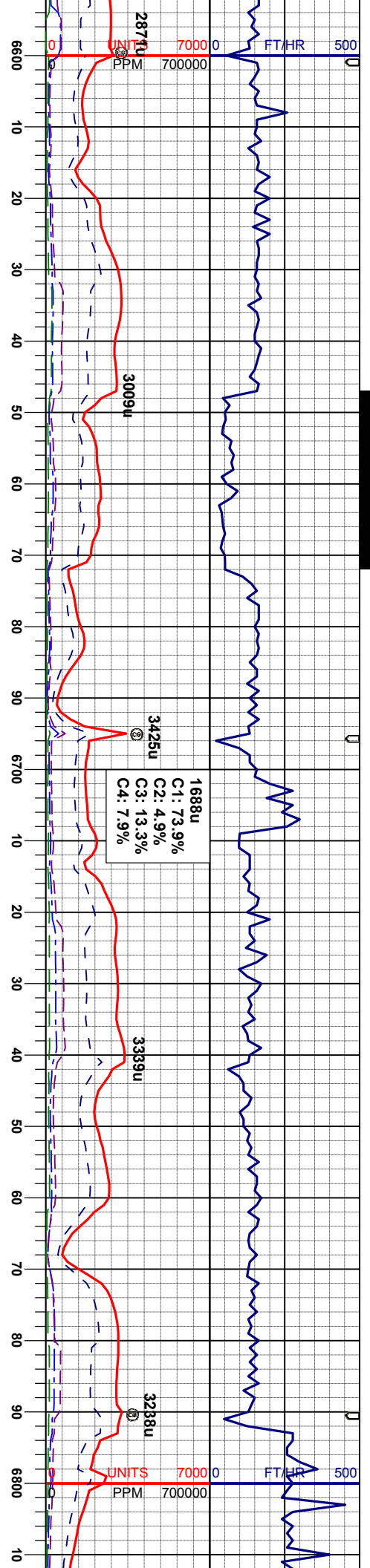


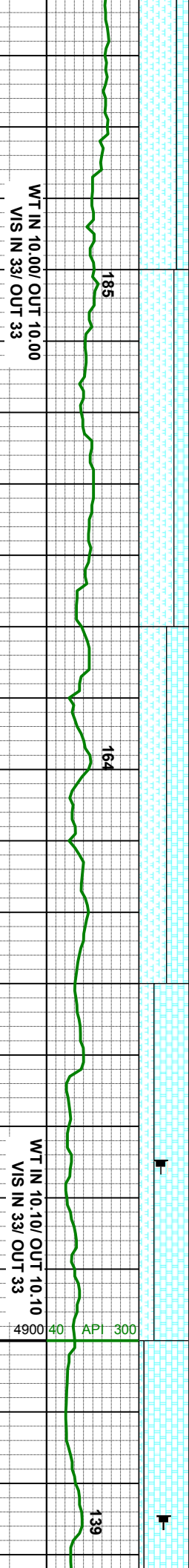
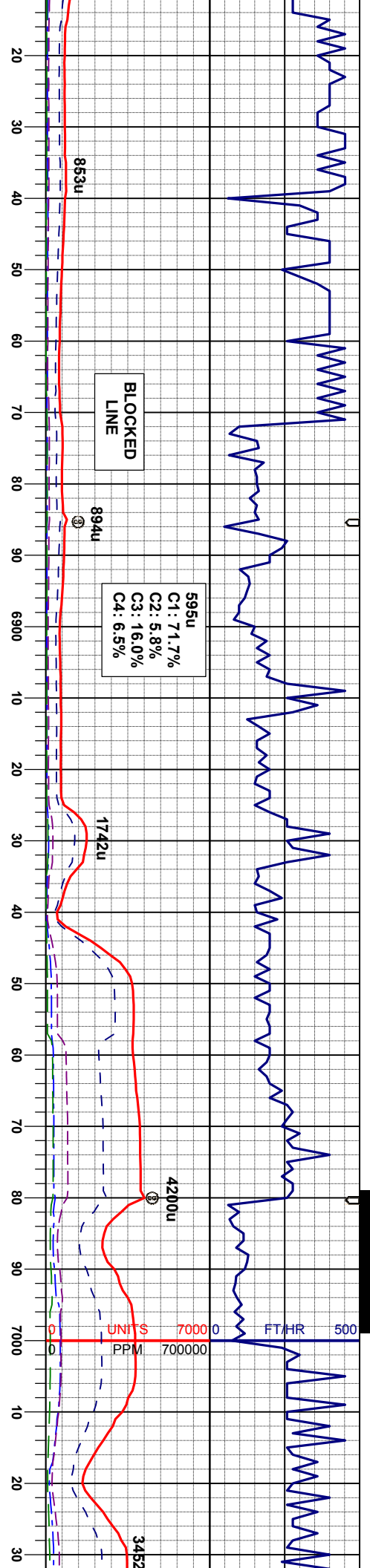




e dkgy, sbblky-sbply, sft hy/istr, v calc, abnt calc frag	MD 6435' INC 89.3° AZM 272.8° TVD 5744.79'	MRL: gy-gybrn, sme dkgy, sbblky-sbply, sft - firm, mot-gt tex, rthy istr, v calc, abnt calc conc, tr bent, tr fos frag CHK: lgy-gy, sbblky, sft- mod firm, mot- slwxy tex, v calc	MD 6530' INC 90.7° AZM 269.8° TVD 5744.79'	MRL: gy-gybrn, sme dkgy, sbblky-sbply, sft - firm, mot-gt tex, rthy istr, v calc, abnt calc conc, tr bent, tr fos frag CHK: lgy-gy, sbblky, sft- mod firm, mot- slwxy tex, v calc	MRL: gy-gybrn, sbblky-sbply, sft- firm, gt tex, rthy istr, v calc, abnt calc conc CHK: gy, sme lgy, sbblky, sft- mod firm mot-gt tex, tr sbvlt istr, v calc







6814'	MD	6909'	MD	7004'
91.3°	INC	91.8°	INC	90.7°
267.2°	AZM	267.0°	AZM	266.6°
5739.00'	TVD	5736.43'	TVD	5734.36'

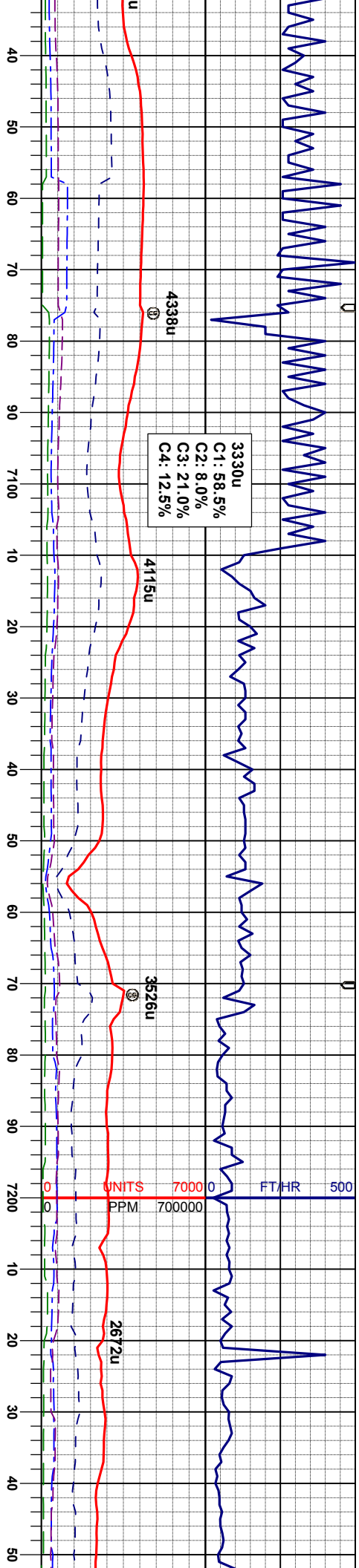
gy/bm, sbbiky-sbply, sft- firm, mot-
y lstr, v calc, abnt calc conc
sme ltyg, sbbiky, sft- mod firm,
x, r sbit lstr, v calc

MRU: gy-gybm, sbbiky-sbply, sft- firm, mot-
gt tex, rthy lstr, v calc, abnt calc conc, tr fos
frag
CHK: gy, sme ltyg, sbbiky, sft- mod firm,
mot-gt tex, r sbit lstr, v calc

MRU: gy-gybm, sbbiky-sbply, sft- firm, mot-
gt tex, rthy lstr, v calc, abnt calc conc, tr fos
frag
CHK: gy, sme ltyg, sbbiky, sft- mod firm,
mot-gt tex, r sbit lstr, v calc

CHK: gy, sme ltyg, sbbiky, sft- mod firm,
mot-gt tex, r sbit lstr, v calc
MRU: gy-gybm, sbbiky-sbply, sft- firm, mot-
gt tex, rthy lstr, v calc, abnt calc conc, abnt
fos frag, tr bent
CHK: wh - lt gy, sbbiky, sft- r
gt tex, r sbit lstr, v calc
MRU: gy-gybm, sbbiky-sbply
gt tex, rthy lstr, v calc, tr calc
frag





WT IN 10.10/ OUT 10.10
VIS IN 33/ OUT 33

MD 7099'
INC 90.3°
AZM 266.5°
TVD 5733.53'

MD 7194'
INC 90.0°
AZM 265.9°
TVD 5733.28'

CHK: wh - lt gy, sbbiky, sft- mod firm, mot-
gt tex, rr sbvit lstr, v calc
MRL: gy-gybrn, sbbiky-sbpily, sft- firm, mot-
gt tex, rthy lstr, v calc, tr calc conc, tr fos
frag

CHK: wh - lt gy, sbbiky, sft- mod firm, mot-
gt tex, rr sbvit lstr, v calc
MRL: gy-gybrn, sbbiky-sbpily, sft- firm, mot-
gt tex, rthy lstr, v calc, occ calc conc, tr fos
frag

CHK: wh - lt gy, sbbiky, sft- mod firm, mot-
gt tex, rr sbvit lstr, v calc
MRL: gy-gybrn, sbbiky-sbpily, sft- firm, mot-
gt tex, rthy lstr, v calc, occ calc conc, tr fos
frag



U

U

U

11/23/2013

2341u
C1: 66.4%
C2: 1.1%
C3: 15.8%
C4: 16.7%

2359u

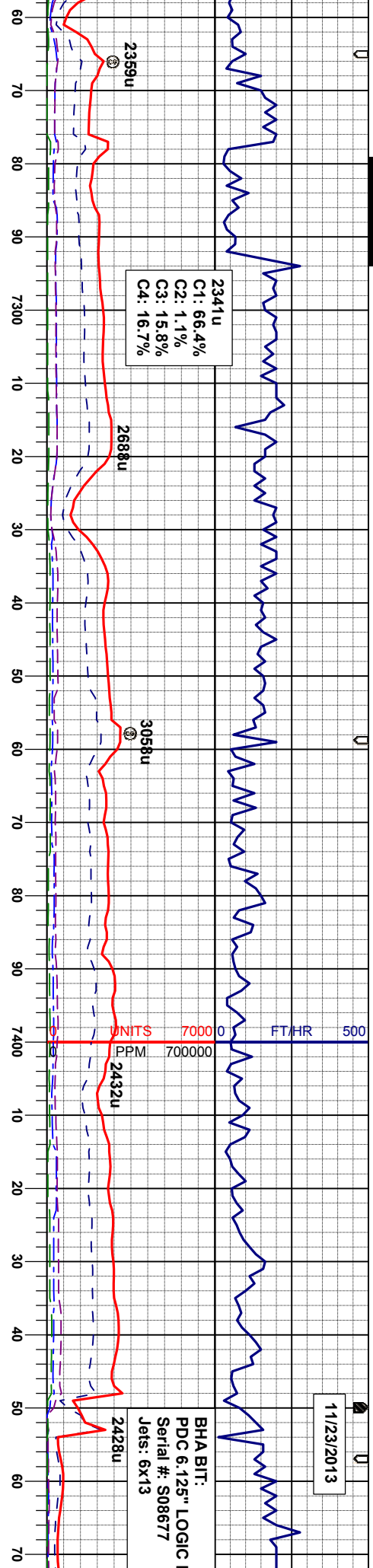
2668u

3058u

2432u

2428u

BHA BIT:
PDC 6.125" LOGIC 1
Serial #: S08677
Jets: 6x13



136

169

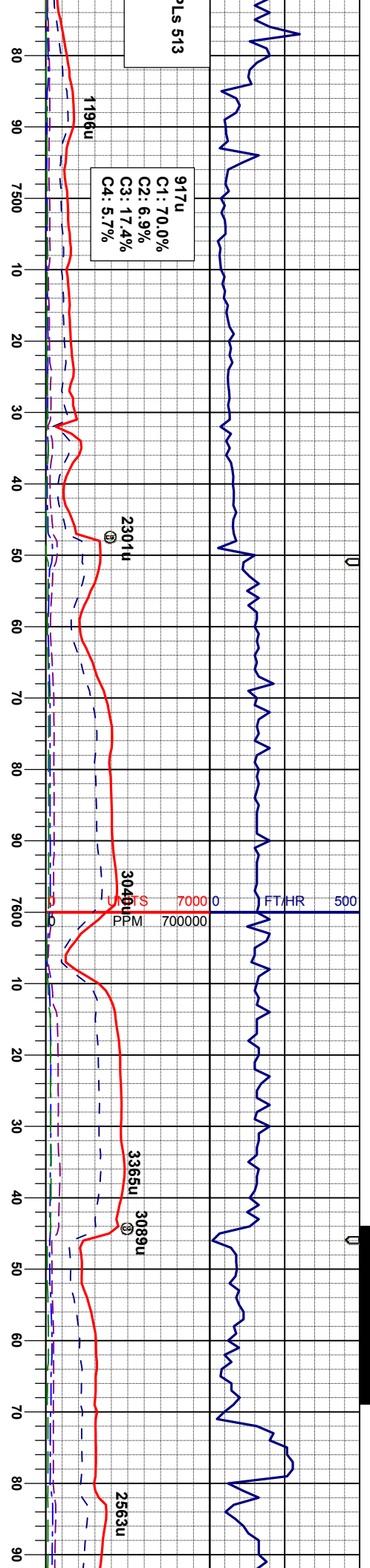
WT IN 10.10/ OUT 10.10
VIS IN 44/ OUT 44

MD 7289'
INC 90.0°
AZM 266.6°
TVD 5733.28'

MD 7384'
INC 89.7°
AZM 267.4°
TVD 5733.53'

MRL: gy-gybrn, sbblky-sbply, sft- firm, mot-
gt tex, rthy istr, v calc, occ calc conc, tr fos
frag
CHK: wh - lt gy, sbblky, sft- mod firm, mot-
gt tex, rr sbvt istr, v calc
MRL: gy-gybrn, sbblky-sbply, sft- firm, mot-
gt tex, rthy istr, v calc, occ calc conc, tr fos
frag
CHK: wh - lt gy, sbblky, sft- mod firm, mot-
gt tex, rr sbvt istr, v calc
MRL: gy-gybrn, sbblky-sbply, sft- firm, mot-
gt tex, rthy istr, v calc, occ calc conc
CHK: wh - lt gy, sbblky, sft- mod firm, mot-
gt tex, rr sbvt istr, v calc
MRL: gy-gybrn, sbblky-sbply, sft- firm, mot-
gt tex, rthy istr, v calc, occ calc conc, tr pyr
CHK: gy, rr ltgy, sbblky-sbply, sft- firm, mot-
gt tex, v calc





MD 7479'
INC 89.4°
AZM 267.7°
TVD 5734.27'

ky-sbply, sft- firm, mot-
g, occ calc conc
-sbply, sft, gt-xl tex, tr
pyr stg, tr xl pyr
CHK: gy, r lly, sbply, sft- mod firm, mot-
gt tex, v calc

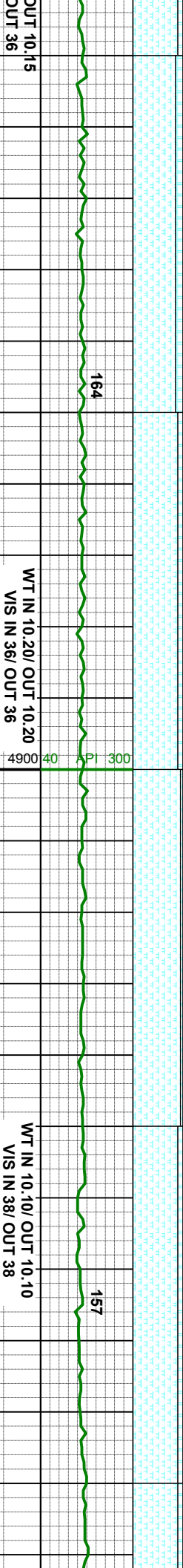
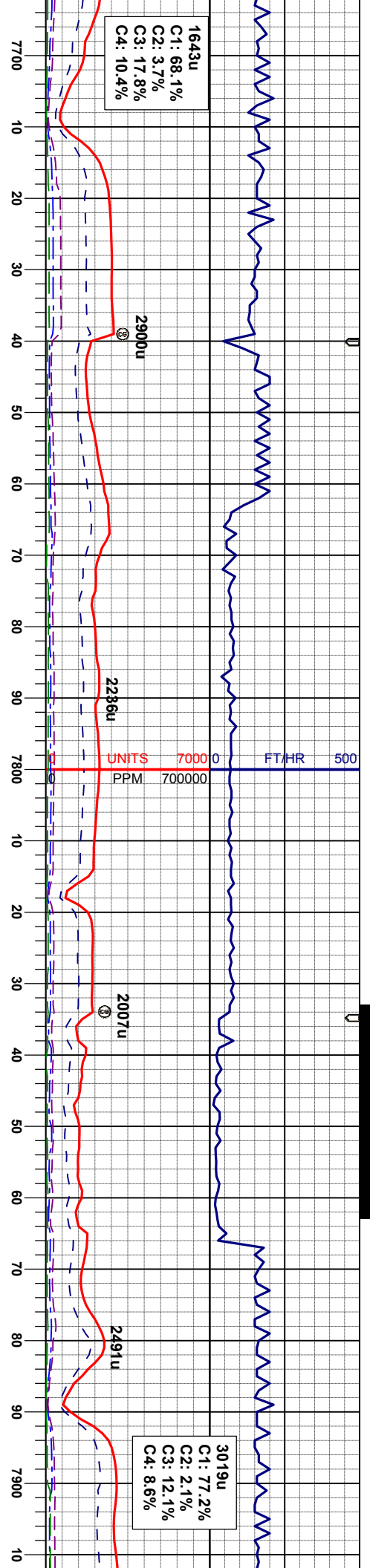
MD 7574'
INC 88.9°
AZM 267.2°
TVD 5735.68'

MRL: gy-gybm, sbply-sbply, sft-
firm, mot-gt tex, rthy lstr, v calc, tr calc
conc, tr bent
CHK: lly-gy, sbply, sft- mod firm, mot-gt
tex, v calc

MD 7669'
INC 90.1°
AZM 269.3°
TVD 5736.51'

MRL: gy-gybm, dky, sbply-sbply, sft-
firm, mot-gt tex, rthy lstr, v calc, tr calc
conc, tr bent
CHK: lly-gy, sbply, sft- mod firm, mot-
gt tex, v calc





MRL: gy-gybrn, dkgy, sbblky-sbply, sft-
firm, mot-gt tex, rthy lstr, v calc, tr calc conc
CHK: ltgy-gy, sbblky, sft- mod firm, mot-gt
tex, v calc

MRL: gy-gybrn, dkgy, sbblky-sbply, sft-
firm, mot-gt tex, rthy lstr, v calc, tr calc conc
CHK: ltgy-gy, sbblky, sft- mod firm, mot-gt
tex, v calc

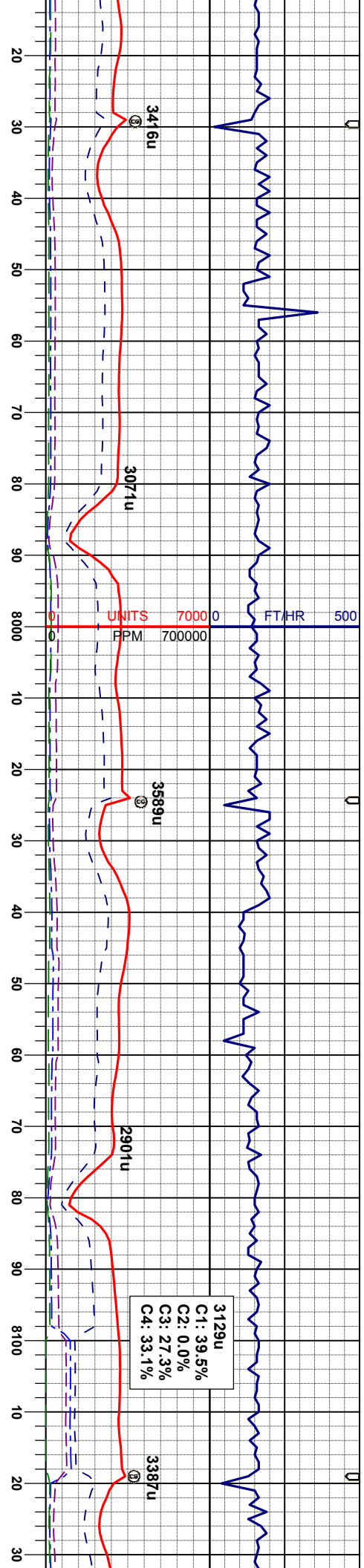
MRL: gy-gybrn, dkgy, sbblky-sbply, sft-
firm, mot-gt tex, rthy lstr, v calc, tr calc conc
CHK: ltgy-gy, sbblky, sft- mod firm, mot-gt
tex, v calc

MRL: gy-gybrn, dkgy, sbblky-sbply, sft-
firm, mot-gt tex, rthy lstr, v calc, tr calc conc
CHK: ltgy-gy, sbblky, sft- mod firm, mot-gt
tex, v calc

MD 7763'
INC 89.3°
AZM 268.8°
TVD 5737.00'

MD 7858'
INC 91.5°
AZM 272.4°
TVD 5736.34'





WT IN 10.00/ OUT 10.00
VIS IN 39/ OUT 39

MD 7963'
INC 91.6°
AZM 272.4°
TVD 5733.77'

MD 8048'
INC 91.5°
AZM 272.4°
TVD 5731.20'

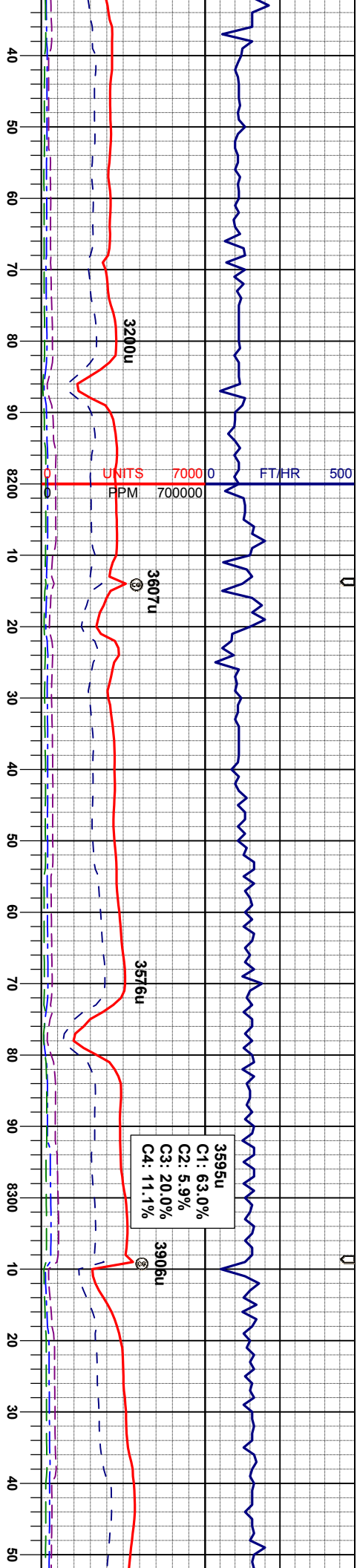
MR.: gy-gybm, dkgy, sbdky-sbply, sft-
firm, mot-gt tex, rthy lstr, v calc, tr calc
conc, tr bent
CHK: lly-gy, sbdky, sft- mod firm, mot-gt
tex, v calc

MR.: gy-gybm, dkgy, sbdky-sbply, sft-
firm, mot-gt tex, rthy lstr, v calc, tr calc
conc, occ bent, tr dism pyr
CHK: lly-gy, sbdky, sft- mod firm, mot-gt
tex, v calc

MR.: gy-gybm, dkgy, sbdky-sbply, sft-
firm, mot-gt tex, rthy lstr, v calc, tr calc
conc, occ bent, tr dism pyr
CHK: lly-gy, sbdky, sft- mod firm, mot-gt
tex, v calc

MR.: gy-gybm, dkgy, sbdky-
firm, mot-gt tex, rthy lstr, v ce
conc, tr bent, tr dism pyr
CHK: lly-gy, sbdky, sft- mod
tex, v calc





WT IN 10.00/ OUT 10.00
VIS IN 39/ OUT 39

MD 8142'
INC 91.0°
AZM 272.1°
TVD 5729.15'

MRL: gy-gybrn, dkgy, sbblky-sbply, sft-
firm, mot-gt tex, rthy istr, v calc, occ calc
CHK: lly-gy, sbblky, sft- mod firm, mot-gt
tex, v calc

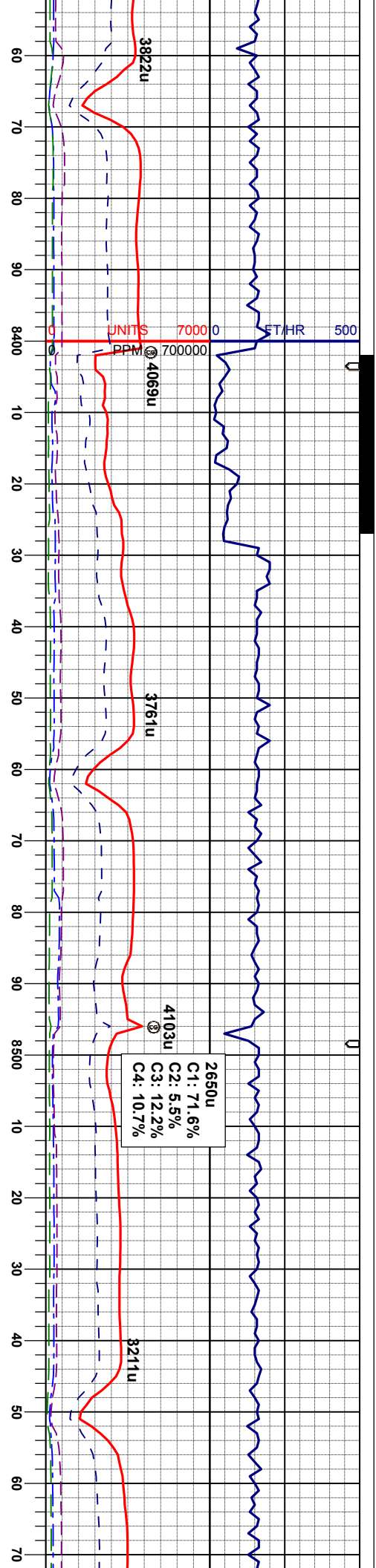
MD 8237'
INC 90.8°
AZM 271.6°
TVD 5727.66'

MRL: gy-gybrn, dkgy, sbblky-sbply, sft-
firm, mot-gt tex, rthy istr, v calc, abnt calc
CHK: lly-gy, sbblky, sft- mod firm, mot-gt
tex, v calc

MD 8332'
INC 91.5°
AZM 271.0°
TVD 5725.75'

MRL: gy-gybrn, dkgy, sbblky-sbply, sft-
firm, mot-gt tex, rthy istr, v calc, abnt calc
CHK: lly-gy, sbblky, sft- mod firm, mot-gt
tex, v calc





WT IN 10.00/ OUT 10.00
VIS IN 38/ OUT 38

MD 8427'
INC 89.8°
AZM 289.8°
TVD 5724.67'

WT IN 10.00/ OUT 10.00
VIS IN 40/ OUT 40

MD 8522'
INC 89.3°
AZM 269.5°
TVD 5725.42'

MR.L: gy-gybm, dkgy, sbblky-sbply, sft-
firm, mot-gt tex, rthy lstr, v calc, abnt calc
conc, tr bent
CHK: lly-gy, sbblky, sft- mod firm, mot-gt
tex, v calc

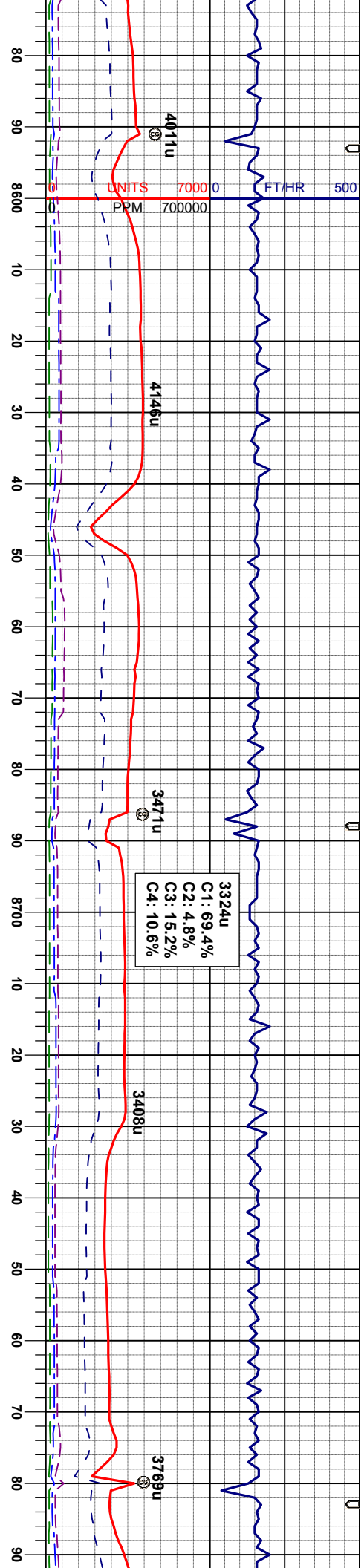
MR.L: gy-gybm, dkgy, sbblky-sbply, sft-
firm, mot-gt tex, rthy lstr, v calc, abnt calc
conc, tr bent, occ fos frag
CHK: lly-gy, sbblky, sft- mod firm, mot-gt
tex, v calc

MR.L: gy-gybm, dkgy, sbblky-sbply, sft-
firm, mot-gt tex, rthy lstr, v calc, abnt calc
conc, tr bent, occ fos frag
CHK: lly-gy, sbblky, sft- mod firm, mot-gt
tex, v calc

MR.L: gy-gybm, dkgy, sbblky-sbply, sft-
firm, mot-gt tex, rthy lstr, v calc, abnt calc
conc, tr bent, occ fos frag
CHK: lly-gy, sbblky, sft- mod firm, mot-gt
tex, v calc

CHK: lly-gy, sbblky, sft- mod firm, mot-gt
tex, v calc
MR.L: gy-gybm, dkgy, sbblky-sbply, sft-
firm, mot-gt tex, rthy lstr, v calc, abnt calc
conc, tr bent

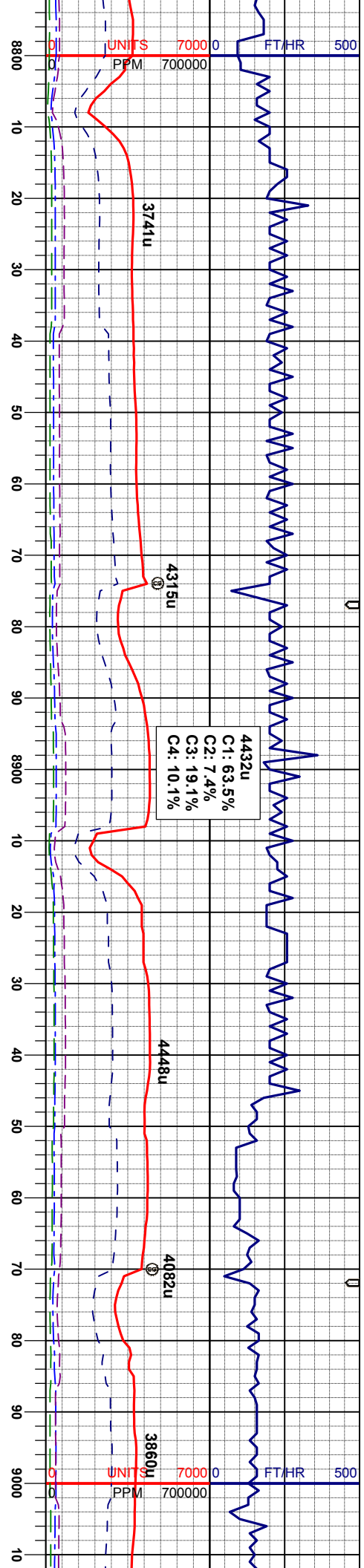




WT IN 10.10/ OUT 10.10
VIS IN 41/ OUT 41

MD 8616'	INC 89.6°	AZM 269.1°	TVD 5726.32'	CHK: lgy-crm, sbblky, sft- mod firm, mot- wxy tex, sbvlt lstr, v calc	MR: lgy-crm, sbblky, sft- mod firm, mot- wxy tex, sbvlt lstr, v calc
MD 8711'	INC 89.3°	AZM 268.8°	TVD 5727.33'	MR: lgy-crm, sbblky, sft- mod firm, mot- wxy tex, sbvlt lstr, v calc	CHK: lgy-crm, sbblky, sft- mod firm, mot- wxy tex, sbvlt lstr, v calc





API 300 40 4900

API 300 40 4900

MD 8806'
INC 89.5°
AZM 268.2°
TVD 5728.23'

MD 8901'
INC 89.3°
AZM 268.8°
TVD 5729.22'

MD 8995'
INC 89.8°
AZM 269.1°
TVD 5729.96'

MRL: gy-gybrn, dkgv, sbblky-sbply, sft-firm, mot-gt tex, rthy lstr, v calc, abnt calc conc, tr bent, occ fos frag
CHK: ltgy-crm, sbblky, sft- mod firm, mot-wxy tex, v calc

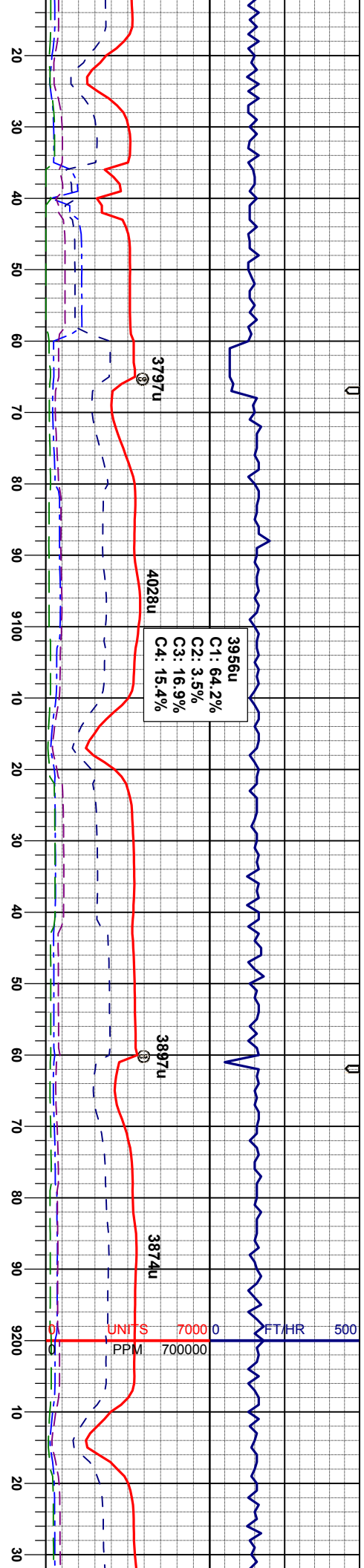
MRL: gy-gybrn, dkgv, sbblky-sbply, sft-firm, mot-gt tex, rthy lstr, v calc, abnt calc conc, tr bent, occ fos frag
CHK: ltgy-crm, sbblky, sft- mod firm, mot-wxy tex, v calc

MRL: gy-gybrn, dkgv, sbblky-sbply, sft-firm, mot-gt tex, rthy lstr, v calc, abnt calc conc, tr bent, occ fos frag
CHK: ltgy-crm, sbblky, sft- mod firm, mot-wxy tex, v calc

MRL: gy-gybrn, dkgv, sbblky-sbply, sft-firm, mot-gt tex, rthy lstr, v calc, abnt calc conc, tr bent, occ fos frag
CHK: ltgy-crm, sbblky, sft- mod firm, mot-wxy tex, mly, v calc

MRL: gy-gybrn, dkgv, sbblky-sbply, sft-firm, mot-gt tex, rthy lstr, v calc, abnt calc conc, tr bent, occ fos frag
CHK: ltgy-crm, sbblky, sft- mod firm, mot-wxy tex, mly, v calc





WT IN 10.15/ OUT 10.15
VIS IN 42/ OUT 42

MD 9090'
INC 89.6°
AZM 268.2°
TVD 5730.46'

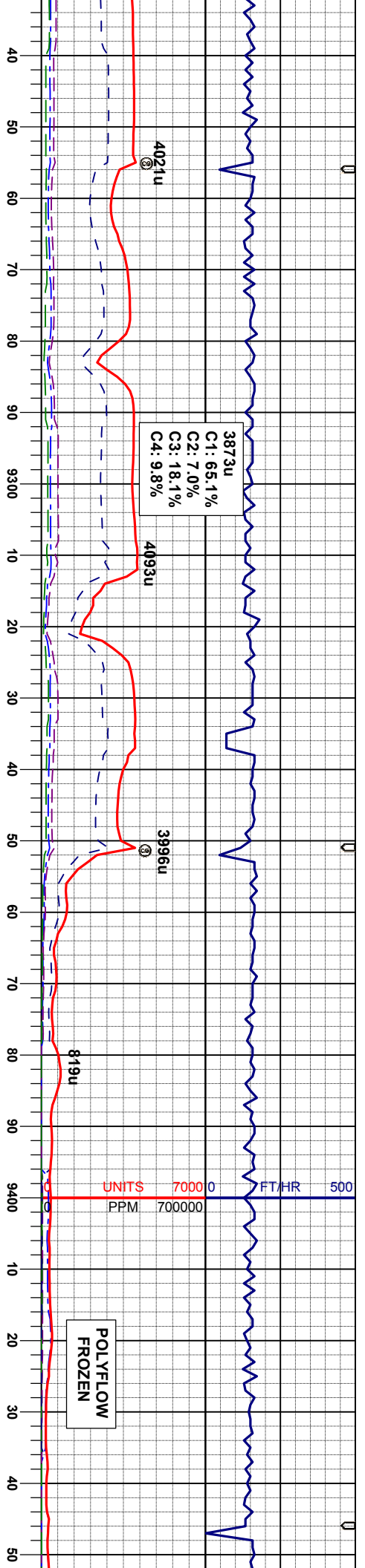
MRL: gy-gybm, dkgy, sbblky-sbply, sft-
firm, mot tex, rthy lsfr, v calc, abnt calc
conc, tr bent, abnt fos frag
CHK: lly-gy, sbblky, sft- mod firm, mot tex,
mly, v calc

MD 9185'
INC 89.6°
AZM 267.4°
TVD 5731.12'

MRL: gy-gybm, dkgy, sbblky-sbply, sft-
firm, mot tex, rthy lsfr, v calc, abnt calc
conc, tr bent, abnt fos frag
CHK: lly-gy, sbblky, sft- mod firm, mot tex,
mly, v calc

MRL: gy-gybm, dkgy, sbblky-
firm, mot tex, rthy lsfr, v calc
conc, tr bent, abnt fos frag
CHK: lly-gy, sbblky, sft- mo
mly, v calc





WT IN 10.20/ OUT 10.20
VIS IN 43/ OUT 43

WT IN 10.20/ OUT 10.20
VIS IN 43/ OUT 43

MD 9280'
INC 89.8°
AZM 267.5°
TVD 5731.62'

MD 9375'
INC 89.1°
AZM 267.0°
TVD 5732.53'

MRL: gy-gybrn, dkgy, sbblky-sbply, sft-firm, mot tex, rthy lstr, v calc, abnt calc conc, tr bent, abnt fos frag
CHK: ltgy-gy, sbblky, sft- mod firm, mot tex, mrlly, v calc

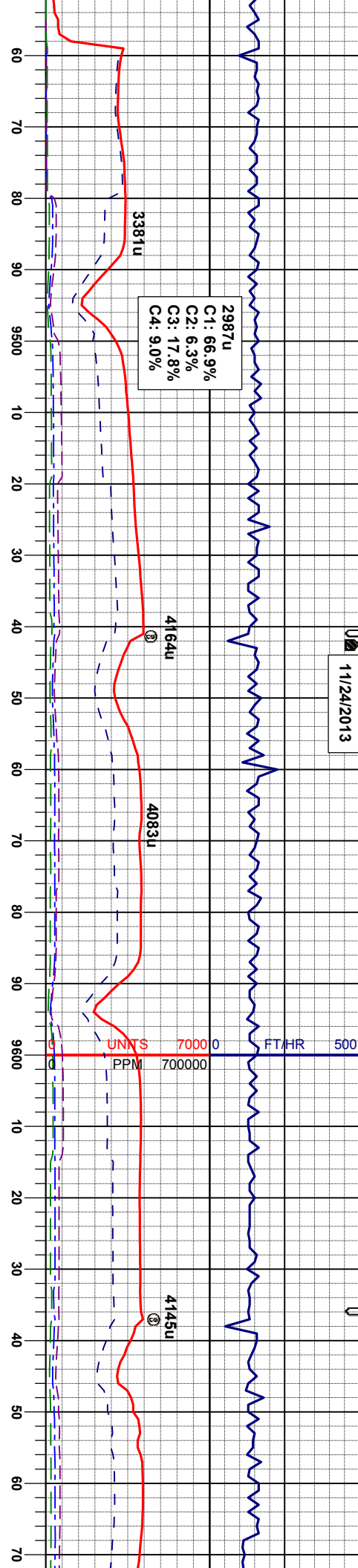
MRL: gy-gybrn, dkgy, sbblky-sbply, sft-firm, mot tex, rthy lstr, v calc, abnt calc conc, tr bent, abnt fos frag
CHK: ltgy-gy, sbblky, sft- mod firm, mot tex, mrlly, v calc

MRL: gy-gybrn, dkgy, sbblky-sbply, sft-firm, mot tex, rthy lstr, v calc, abnt calc conc, tr bent, abnt fos frag
CHK: ltgy-gy, sbblky, sft- mod firm, mot tex, mrlly, v calc

MRL: gy-gybrn, dkgy, sbblky-sbply, sft-firm, mot tex, rthy lstr, v calc, abnt calc conc, tr bent, abnt fos frag
CHK: ltgy-gy, sbblky, sft- mod firm, mot tex, mrlly, v calc



11/24/2013



WT IN 10.30/ OUT 10.30
VIS IN 43/ OUT 43

MD 9469'
INC 89.0°
AZM 266.3°
TVD 5734.09'

MRL: gy-gy/brn, dkgy, sbblky-sbply, sft-firm, mot tex, rthy lstr, v calc, abnt calc conc, tr bent, abnt fos frag
CHK: lly-gy, sbblky, sft- mod firm, mot tex, mfly, v calc

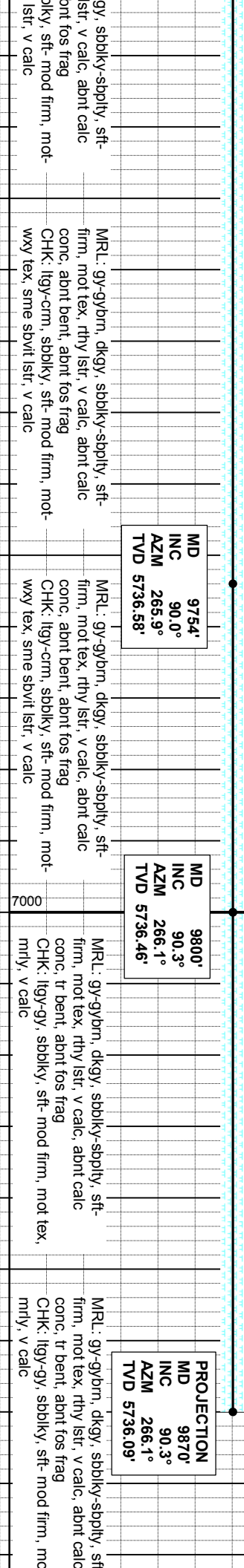
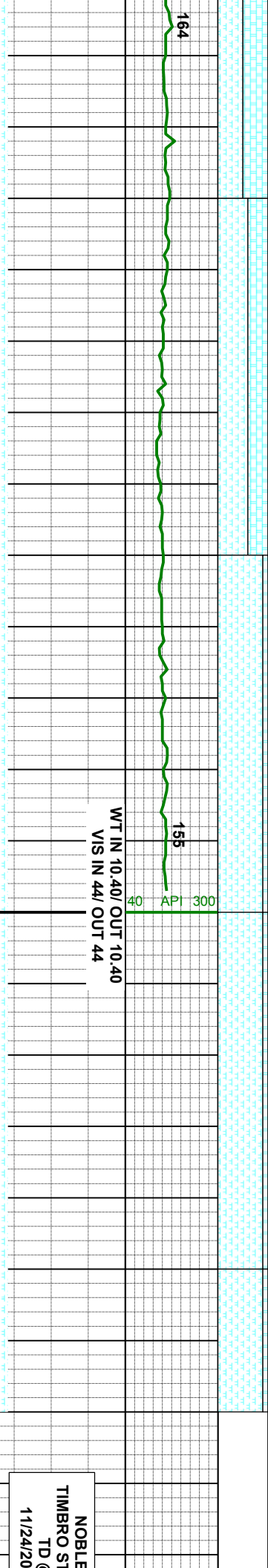
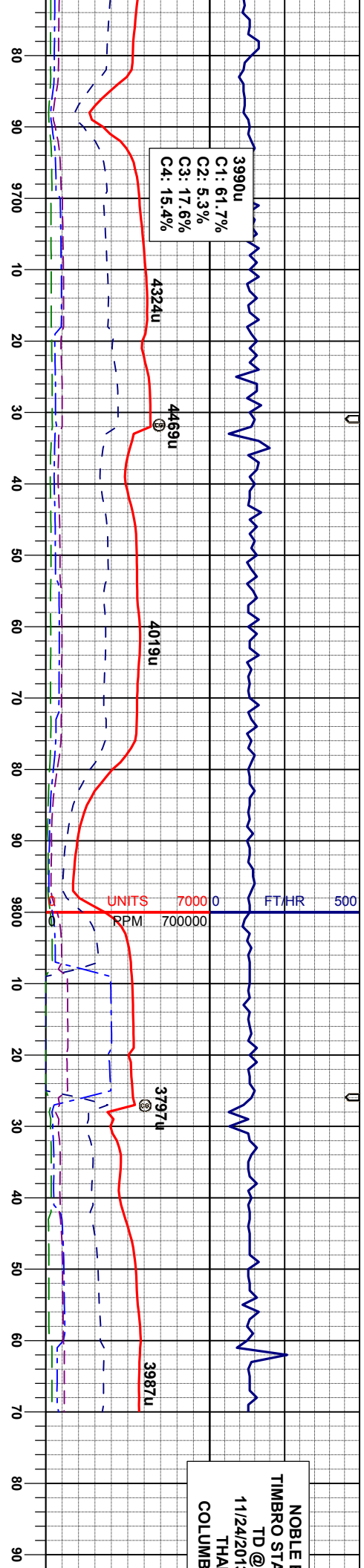
MD 9564'
INC 89.0°
AZM 266.1°
TVD 5735.75'

MRL: gy-gy/brn, dkgy, sbblky-sbply, sft-firm, mot tex, rthy lstr, v calc, abnt calc conc, tr bent, abnt fos frag
CHK: lly-gy, sbblky, sft- mod firm, mot tex, mfly, v calc

MD 9659'
INC 90.0°
AZM 266.3°
TVD 5736.58'

MRL: gy-gy/brn, dkgy, sbblky-sbply, sft-firm, mot tex, rthy lstr, v calc, abnt calc conc, tr bent, abnt fos frag
CHK: lly-gy, sbblky, sft- mod firm, mot tex, mfly, v calc





NOBLE I
TIMBRO STA
TD @
11/24/201
THA
COLUMB

NOBLE I
TIMBRO STA
TD @
11/24/20

PROJECTION
MD 9870'
INC 90.3°
AZM 266.1°
TVD 5736.09'

MRL: gy-gybrn, dkg, sbblky-sbply, sft-
firm, mot tex, rthy lstr, v calc, abnt calc
conc, tr bent, abnt fos frag
CHK: lly-gy, sbblky, sft- mod firm, mot tex,
mly, v calc

MRL: gy-gybrn, dkg, sbblky-sbply, sft-
firm, mot tex, rthy lstr, v calc, abnt calc
conc, tr bent, abnt fos frag
CHK: lly-gy, sbblky, sft- mod firm, mot tex,
mly, v calc

MRL: gy-gybrn, dkg, sbblky-sbply, sft-
firm, mot tex, rthy lstr, v calc, abnt calc
conc, abnt bent, abnt fos frag
CHK: lly-crm, sbblky, sft- mod firm, mot-
way tex, sme sbvt lstr, v calc

MRL: gy-gybrn, dkg, sbblky-sbply, sft-
firm, mot tex, rthy lstr, v calc, abnt calc
conc, abnt bent, abnt fos frag
CHK: lly-crm, sbblky, sft- mod firm, mot-
way tex, sme sbvt lstr, v calc

gy, sbblky-sbply, sft-
lstr, v calc, abnt calc
conc, abnt bent, abnt fos frag
CHK: lly-crm, sbblky, sft- mod firm, mot-
lstr, v calc

ENERGY INC
SITE LD16-68-1HN
9870' MD
3 @ 3:18 AM
NK YOU
LINE LOGGING

9900 10 20

ENERGY INC
DATE LD16-68-1HN
@ 9870' MD
13 @ 3:18 AM

t tex,

