
ANADARKO PETROLEUM CORP - EBUS

**Paragon 10N-31HZ
WATTENBURG
Weld County , Colorado**

Cement Surface Casing
06-Dec-2013

Job Site Documents

Field Ticket Number: 900950436	Field Ticket Date: Friday, December 06, 2013
Bill To: ANADARKO PETROLEUM CORP - EBUS DO NOT MAIL - PO BOX 4995 THE WOODLANDS, TX 77387-4995	Job Name: Paragon Order Type: Streamline Order (ZOH) Well Name: Paragon 10N-31HZ Company Code: 1100 Customer PO No.: NA Shipping Point: Fort Lupton, CO, USA Sales Office: Rocky Mountains BD Well Type: Oil Well Category: Development
Ship To: PARAGON #10N-31HZ, WELD PARAGON #10N-31HZ 3208804 S6-T1N-R65W BRIGHTON, CO 80603	

Material	Description	QTY	UOM	Base Amt	Unit Amt	Gross Amount	Discount	Net Amount
7521	CMT SURFACE CASING BOM	1	JOB	0.00	0.00	0.00		0.00
16091	ZI - PUMPING CHARGE	1	EA	0.00	4,935.00	4,935.00	68%	1,579.20
	DEPTH	1137						
	FEET/METERS (FT/M)		FT					
432904	CMT, ROCKIES SG SETUP	1	EA			0.00		0.00
432905	CMT, ROCKIES SG MILEAGE	1	MI			248.80	68.0%	79.61
	Number of Units	1						
432906	CMT, ROCKIES SG DELIVERY	1	TNM			3,161.85	68.0%	1,011.79
	NUMBER OF TONS	21.29						
528788	MUD FLUSH III	12	BBL	0.00	94.45	1,133.40	68%	362.69
101633304	MUD FLUSH III	40	LB		0.00	0.00		0.00
452990	SWIFTCEM (TM) SYSTEM	427	SK			25,284.15	68.0%	8,090.93
				Totals	USD	34,763.20	23,638.98	11,124.22

Halliburton Rep:

WESLEY WHIPPLE

Customer Agent:

Randy Case

Halliburton Approval

Field Ticket

Field Ticket Number: 900950436		Field Ticket Date: Friday, December 06, 2013	
Bill To: ANADARKO PETROLEUM CORP - EBUS DO NOT MAIL - PO BOX 4995 THE WOODLANDS, TX 77387-4995		Job Name: Paragon Order Type: Streamline Order (ZOH) Well Name: Paragon 10N-31HZ Company Code: 1100 Customer PO No.: NA Shipping Point: Fort Lupton, CO, USA Sales Office: Rocky Mountains BD Well Type: Oil Well Category: Development	
Ship To: PARAGON #10N-31HZ,WELD PARAGON #10N-31HZ 3208804 S6-T1N-R65W BRIGHTON, CO 80603			

Material	Description	QTY	UOM	Base Amt	Unit Amt	Gross Amount	Discount	Net Amount
----------	-------------	-----	-----	----------	----------	--------------	----------	------------

THIS OUTPUT DOES NOT INCLUDE TAXES. APPLICABLE SALES TAX WILL BE BILLED ON THE FINAL INVOICE.

CUSTOMER HEREBY ACKNOWLEDGES RECEIPT OF THE MATERIALS AND SERVICES DESCRIBED ABOVE AND ON THE ATTACHED DOCUMENTS.

X

FIELD TICKET TOTAL: USD

11,124.22

Customer Signature

Was our HSE performance satisfactory? Y or N
(Health, Safety, Environment)

Were you satisfied with our Equipment? Y or N

Were you satisfied with our people? Y or N

Comments

Customer Information Only

Approver Userid

Anadarko Signatory Name

Charge To Number

The Road to Excellence Starts with Safety

Sold To #: 300466		Ship To #: 3208804		Quote #:		Sales Order #: 900950436	
Customer: ANADARKO PETROLEUM CORP - EBUS				Customer Rep: Case, Randy			
Well Name: Paragon			Well #: 10N-31HZ		API/UWI #:		
Field: WATTENBURG		City (SAP): BRIGHTON		County/Parish: Weld		State: Colorado	
Contractor: Majors			Rig/Platform Name/Num: Majors 29				
Job Purpose: Cement Surface Casing							
Well Type: Development Well			Job Type: Cement Surface Casing				
Sales Person: PLIENESS, RYAN			Srvc Supervisor: WHIPPLE, WESLEY		MBU ID Emp #: 518611		

Job Personnel

HES Emp Name	Exp Hrs	Emp #	HES Emp Name	Exp Hrs	Emp #	HES Emp Name	Exp Hrs	Emp #
NIELSON, BRANDON K	5.0	479703	SCILEPPI, JOSEPH D	5.0	555492	STIELER, KENT	5.0	554541
WHIPPLE, WESLEY Morgan	5.0	518611						

Equipment

HES Unit #	Distance-1 way	HES Unit #	Distance-1 way	HES Unit #	Distance-1 way	HES Unit #	Distance-1 way
10867419C	8 mile	11036301	20 mile	11526488	8 mile	11812069C	8 mile
12010172	8 mile						

Job Hours

Date	On Location Hours	Operating Hours	Date	On Location Hours	Operating Hours	Date	On Location Hours	Operating Hours

TOTAL Total is the sum of each column separately

Job				Job Times			
Formation Name	Formation Depth (MD)	Top	Bottom	Called Out	Date	Time	Time Zone
Form Type			BHST	On Location	06 - Dec - 2013	10:30	MST
Job depth MD	1137. ft		Job Depth TVD	Job Started	06 - Dec - 2013	14:00	MST
Water Depth			Wk Ht Above Floor	Job Completed	06 - Dec - 2013	17:06	MST
Perforation Depth (MD)	From		To	Job Completed	06 - Dec - 2013	18:39	MST
				Departed Loc	06 - Dec - 2013	19:00	MST

Well Data

Description	New / Used	Max pressure psig	Size in	ID in	Weight lbm/ft	Thread	Grade	Top MD ft	Bottom MD ft	Top TVD ft	Bottom TVD ft
13 1/2" Open Hole Section				13.5					1137.		
9 5/8" Surface Casing	Unknown		9.625	8.921	36.		J-55		1137.		

Sales/Rental/3rd Party (HES)

Description	Qty	Qty uom	Depth	Supplier
CMT CASING EQUIPMENT BOM	1	JOB		
MILEAGE FOR CEMENTING CREW,ZI	20	MI		
ZI FUEL SURCHG-CARS/PICKUPS<1 1/2TON	20	MI		
KIT,HALL WELD-A	1	EA		
CNTRLZR, 9 5/8"x13 3/4',#500-0963-1375	8	EA		
BASKET - CEMENT - 9-5/8 CSG X 12-1/4	1	EA		
PLUG,CMTG,TOP,9 5/8,HWE,8.16 MIN/9.06 MA	1	EA		
COLLAR-STOP-9 5/8"-FRICTION-HINGED	2	EA		

Tools and Accessories

Type	Size	Qty	Make	Depth	Type	Size	Qty	Make	Depth	Type	Size	Qty	Make
Guide Shoe					Packer					Top Plug			
Float Shoe					Bridge Plug					Bottom Plug			
Float Collar					Retainer					SSR plug set			
Insert Float										Plug Container			

Stage Tool										Centralizers													
Miscellaneous Materials																							
Gelling Agt					Conc		Surfactant					Conc		Acid Type					Qty		Conc		%
Treatment Fld					Conc		Inhibitor					Conc		Sand Type					Size		Qty		
Fluid Data																							
Stage/Plug #: 1																							
Fluid #	Stage Type	Fluid Name					Qty	Qty uom	Mixing Density lbm/gal	Yield ft ³ /sk	Mix Fluid Gal/sk	Rate bbl/min	Total Mix Fluid Gal/sk										
1	Fresh Water Spacer						10.00	bbl	8.33	.0	.0	.0											
2	Mud Flush						12.00	bbl	8.4	.0	.0	.0											
3.5 lbm/bbl		MUD FLUSH III, 40 LB SACK (101633304)																					
42 gal/bbl		MUD FLUSH III - SBM (528788)																					
3	WATER SPACER						10.00	bbl	8.33	.0	.0	.0											
4	SwiftCem B2	SWIFTCM (TM) SYSTEM (452990)					427.0	sacks	14.2	1.54	7.66		7.66										
7.66 Gal		FRESH WATER																					
Calculated Values					Pressures					Volumes													
Displacement		84.6		Shut In: Instant				Lost Returns				Cement Slurry				Pad							
Top Of Cement				5 Min				Cement Returns		5		Actual Displacement		84.6		Treatment							
Frac Gradient				15 Min				Spacers				Load and Breakdown				Total Job							
Rates																							
Circulating		5		Mixing		5		Displacement		5		Avg. Job		5									
Cement Left In Pipe		Amount 45 ft		Reason		Shoe Joint																	
Frac Ring # 1 @		ID		Frac ring # 2 @		ID		Frac Ring # 3 @		ID		Frac Ring # 4 @		ID									
The Information Stated Herein Is Correct										Customer Representative Signature													

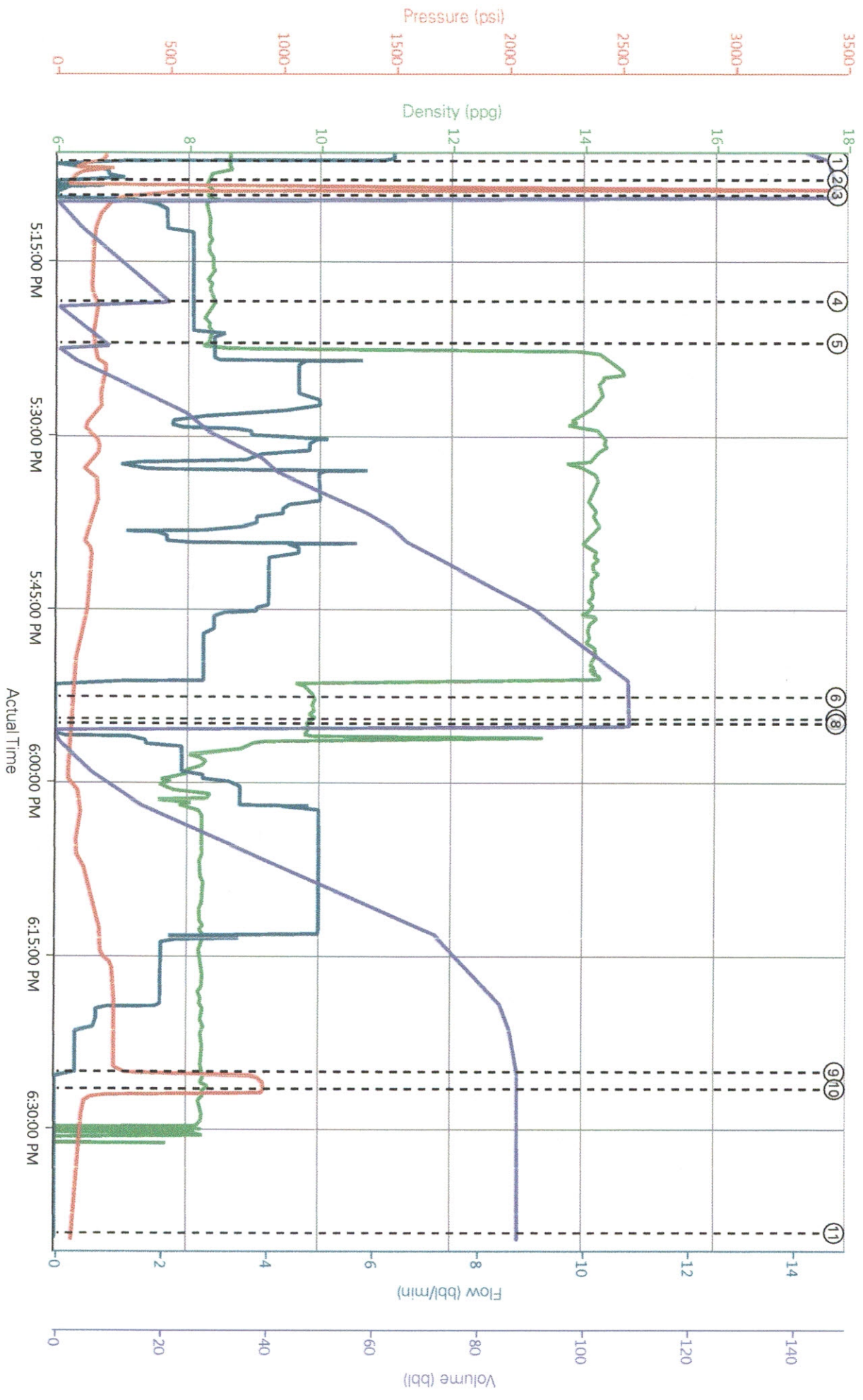
The Road to Excellence Starts with Safety

Sold To #: 300466		Ship To #: 3208804		Quote #:		Sales Order #: 900950436	
Customer: ANADARKO PETROLEUM CORP - EBUS				Customer Rep: Case, Randy			
Well Name: Paragon			Well #: 10N-31HZ		API/UWI #:		
Field: WATTENBURG		City (SAP): BRIGHTON		County/Parish: Weld		State: Colorado	
Legal Description:							
Lat:				Long:			
Contractor: Majors			Rig/Platform Name/Num: Majors 29				
Job Purpose: Cement Surface Casing					Ticket Amount:		
Well Type: Development Well			Job Type: Cement Surface Casing				
Sales Person: PLIENESS, RYAN			Srv Supervisor: WHIPPLE, WESLEY			MBU ID Emp #: 518611	

Activity Description	Date/Time	Cht #	Rate bbl/ min	Volume bbl		Pressure psig		Comments
				Stage	Total	Tubing	Casing	
Call Out	12/06/2013 10:30							CREW CALLED OUT BY ARS OFFICE @1030
Crew Leave Yard	12/06/2013 13:30							CREW PRE TRIPPED EQUIPMENT, HELD A PRE JOURNEY SAFETY MEETING TO DISCUSS SAFETY, AND ROUTE.
Arrive At Loc	12/06/2013 14:00							ARRIVED ON LOCATION, MET WITH ANADARKO REP TO GO OVER JOB.
Rig-Up Equipment	12/06/2013 14:30							CREW HELD A PRE RIG UP SAFETY MEETING PRIOR TO RIG UP, DISCUSSED HAZARDS, RIG UP PROCESS AND BEGAN SPOTTING IN EQUIPMENT AND COMMENCED RIG UP OF IRON
Casing on Bottom	12/06/2013 15:30							CASING SET ON BOTTOM @ 1530.
Safety Meeting	12/06/2013 16:30							HELD A PRE JOB SAFETY MEETING WITH ALL HANDS ON LOCATION TO DISCUSS JOB PROCESS, HAZARDS AND JOB PROCESS
Start Job	12/06/2013 17:06							
Activity Description	Date/Time	Cht	Rate bbl/ min	Volume bbl		Pressure psig		Comments

		#		Stage	Total	Tubing	Casing	
Test Lines	12/06/2013 17:08						3000. 0	PRESSURE TESTED PUMPS AND LINES TO 3000PSI. FOUND NO LEAKS AND PRESSURE HELD
Pump Spacer 1	12/06/2013 17:10		2.5	10			170.0	PUMPED FRESH WATER SPACER
Pump Spacer 2	12/06/2013 17:14		2.5	12	22		170.0	MIXED MUD FLUSH WITH FRESH WATER
Pump Spacer 1	12/06/2013 17:19		3.5	10	32		200.0	PUMPED FRESH WATER SPACER
Pump Cement	12/06/2013 17:22		5	117			185.0	MIXED AND PUMPED 427SKS OF SWIFTCEM @14.2PPG. DENSITY VERIFIED BY PRESSUREIZED SCALES.
Shutdown	12/06/2013 17:53							
Drop Top Plug	12/06/2013 17:54							DROP TOP PLUG, WITNESSED BY ANADARKO REP.
Pump Displacement	12/06/2013 17:55		5	84.62			180.0	PUMPED FRESH WATER DISPLACEMENT. HAD 5 BBLs OF CEMENT RETURN TO SURFACE
Bump Plug	12/06/2013 18:25							BUMPED PLUG @261 PSI AND TOOK 500PSI OVER FINAL PUMPING PRESSURE. HELD PRESSURE @927 PSI
Check Floats	12/06/2013 18:26							RELEASED PRESSURE BACK TO PUMP TRUCK. RECIEVED BBLs BACK AND FLOATS HELD
End Job	12/06/2013 18:39							HELD RIG DOWN SAFETY MEETING, COMMENCED RIG DOWN OF EQUIPMENT, LEFT WET AND DRY SAMPLES ON LOCATION

ANADARKO PARAGON 10N-31HZ



DH Density (ppg) Comb Pump Rate (bbl/min) PS Pump Press (psi) PS Pmp Stg Tot (bbl)

- 1 Start Job 8.61;0:113;146.5
- 2 Test Lines 8.33;0:58;147.5
- 3 Pump Spacer 1 8.29;0:273;0
- 4 Pump Spacer 1 8.42;2:6;186;0
- 5 Pump Cement 8.23;3:172;10.1
- 6 Shutdown 9.92;0:73;108.8
- 7 Drop Top Plug 9.81;0:68;108.8
- 8 Pump Displacement 9.82;0:67;0
- 9 Bump Plug 8.28;0:845;87.8
- 10 Other 8.25;0:926;87.8
- 11 End Job -0.17;0:80;87.8

Material Roll Up

Sales Order #:

900950436

AFE #:

WO #:

PO #:

Crew: CEMENT

Requested Job Start Date: 12-06-2013

Colorado Oil and Gas Commission Wellsite Form

Customer: ANADARKO

Field: WATTENBERG

Job Type: SURFACE

UWI / API Number:

County/Parish: WELD

Service Supervisor: WESLEY WHIPPLE

Well Name: PARGON

State: COLORADO

Well No: 10N-31HZ

Latitude:

Stage / Zone:

Longitude:

Cust Rep Name:

Formation:

Sect / Twn / Rng: / /

Cust Rep Phone #:

Do Not leave the yard without the proper MSDS documentation for All chemicals.

Colorado Oil and Gas Commission					
Material	Delivered to Location	UOM	Specific Gravity	Weight (lbs)	Comment
SWIFTCM	12-05-2013	LB		42585	
MUD FLUSH	12-05-2013	LB		40	
		LB			

☒

Operator provided all Material Safety Data Sheets (MSDS) related to material listed above.
Operator representative will check box to designate he/she has received all MSDS documentation.

Operator Representative Signature

JSA

OBJECTIVE: RIG UP CEMENTERS CEMENT HEAD, HOOK UP CEMENT HOSES, PRESSURE TEST LINES, CEMENT CASING, SHUT DOWN, DROP PLUG, DISPLACE CEMENT AND LAND PLUG, SHUT CASING IN, BREAK CEMENTER EQUIP. DOWN AND WOC.

HAZZARDS: LIFTING HAZZARDS, STRUCK BY, CHEMICAL HAZZARDS, HIGH PRESSURE LINES, PINCH PIONTS, SLIPS AND TRIPS, OVERHEAD HAZZARDS, POTENTIAL GAS HAZZARDS.

PERVENTIONS: SAFETY MEETING PRIOR TO STARTING JOB, HAND AND FOOT PLACEMENT, USING 5 PIONT HARNESS OVER 4' HIGH, TEAM LIFTING OR USE WINCH LINE TO LIFT HEAVY OBJECTS, MSDS SHEETS, WEARING PROPER PPE, DUE NOT HAMMER ON ANYTHING WITH PRESSURE, GOOD COMMUNCATION BETWEEN ALL PARTIES ON LOCATION, IF YOU GET CEMENT ON YOU WASH IT OFF IMEADETLY AND CONTACT CONSULTANT OF ANY INCEDENTS THAT OCCERED. WHIP CHECKS ON AND SECURED, PROPER TOOL FOR THE JOB, GAS MONITER, IF ANY THING SHOULD HAPPEN MEET AT ENTRENCE OF LOCATION, IF GAS MONITOR GOES OFF GO UP WIND AND UPHILL OF LOCATION. WHEN PRESSURE TESTING LINES AND CEMENTING WELL STAY OFF OF FLOOR AND AWAY FROM MANIFOLD. FOR ANY REASON YOU NEED TO CROSS OVER CEMENT LINES STEP ON THE LINE NOT OVER LINES. IN CASE OF EMERGENCY # ARE POSTED ON DOG HOUSE WALL AND IN COMPANY HAND SHACK AND GPS CORDINATES ARE AVAILIBLY ON DESK IN COMPANY HAND SHACK FOR FLIGHT FOR LIFE.

HAVE A SAFE JOB

HAVE A SAFE JOB

Randy Case
J.M.
Eugene M. White
C.W. Barnes NOV
Frankie J. [unclear]
[unclear] NOV
Jan [unclear]
Bier Lind

[unclear]
Whitford HES
[unclear]
Charles Felt major
Marty Harte
J. Caudill
Frank Vial
P.L.

JOB SAFETY ANALYSIS

RIG:	MAJOR 29
DATE:	12/06/13

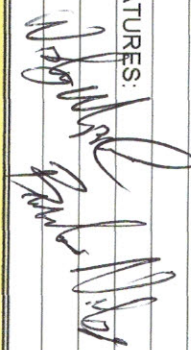
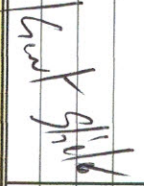
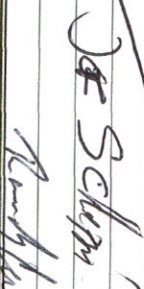
WORK ACTIVITY (JOB):		TRAVEL TO LOCATION			
CREW		B. NIELSON, W.WHIPPLE, J.SILEPPI, K.STIELER			
Sequence of Basic Job Steps		Potential Accidents or Hazards		Recommendations to Eliminate or Reduce Potential Hazards	
PRE-TRIP		TRIPPING HAZARD		WATCH WHERE YOU ARE WALKING, CLIMBING USE THREE POINT CONTACT AT ALL TIME.	
SECURE LOAD		PINCH POINT, STEPPING, LIFTING AND ETC.		WATCH WHERE YOU ARE WALKING, CLIMBING IF YOU CAN NOT SECURE IT CALL FOR HELP. WATCH HOW YOU LIFT THINGS, ALSO WATCH WHERE YOU PLACE YOUR HANDS.	
CHECK ALL THAT DOT REQUIRES. DO YOUR PRE-TRIPS AND POST TRIPS, CHECK YOU LOG BOOK TO SEE THAT YOU ARE LEGAL TO DRIVE.				COMMUNICATION IS THE KEY TO A SAFE JOB	
NO PASSING		ON COMING VEHICLES		NO PASSING	
SPACE MANAGEMENT		SUDDEN STOP		DRIVE 15 SECONDS BEHIND MOVING VEHICLES	
MUDDY LOCATIONS		SLIPPERY ROADS		BE EXTRA CAREFUL ON ROAD, HAVE GOOD CONTROL OF YOUR EQUIPMENT. WATCH YOUR STEPPING.	
DUSTY LOCATION		EYE IRRITATION		WERE SAND GOGGLES	
SAFETY EQUIPMENT REQUIRED TO DO THIS JOB:					
Hard Hats?		YES			
Safety Shoes?		YES			
Safety Glasses?		YES			
Cotton Gloves?		YES			
Work Vests?		Safety Harness?			
Face Shields?		Goggles?			
Barricades?		Fire Extinguisher?			
Lock-Out/Tag-Out?		Work Permit Required?			

JOB SAFETY ANALYSIS

RIG:	WORKOVER
DATE:	

WORK ACTIVITY (JOB): Rigging down and travel back to yard

CREW

Sequence of Basic Job Steps	Potential Accidents or Hazards	Recommendations to Eliminate or Reduce Potential Hazards			
#6 CLEAN LINES IF NEEDED	SPILLS, LOOSE LINES, AND YOUR STEPPING HAMMERING	MAKE SURE THE HOSE LINE THAT IS BEING USED IS STAKED DOWN ON THE GROUND. MAKE SURE THE HOSE IS NOT LOOSE AND IS RAN ALL THE WAY TO THE RESERVE PIT. WATCH YOUR STEPPING WHEN GOING TO SEE FOR RETURNS. HAVE GOOD COMMUNICATION WITH PUMP OPERATOR.			
#7 RIGGING DOWN	SAME AS #2	SAME AS #2			
#8 CLEANING EQUIPMENT	SAME AS #1 ENVIRONMENTAL SPILL	SAME AS #1 CLEAN EQUIPMENT IN AREA DESIGNATED BY CON. REP.			
#9 DRIVE BACK TO YARD	FALLING PART FROM PUMP, FALLING ASLEEP, ROAD CONDITIONS, TRAFFIC	MAKE SURE EVERYTHING IS SECURE AND WILL NOT FALL OF EQUIPMENT. MAKE SURE EVERYONE HAS DOT HR. TO DRIVE BACK TO YARD. DISCUSS ROAD AND TRAFFIC CONDITION.			
SIGNATURES:					
					
SAFETY EQUIPMENT REQUIRED TO DO THIS JOB:					
Hard Hats?	YES	Work Vests?		Barricades?	
Safety Shoes?	YES	Safety Harness?		Fire Extinguisher?	
Safety Glasses?	YES	Face Shields?		Lock-Out/Tag-Out?	
Cotton Gloves?	YES	Goggles?		Work Permit Required?	