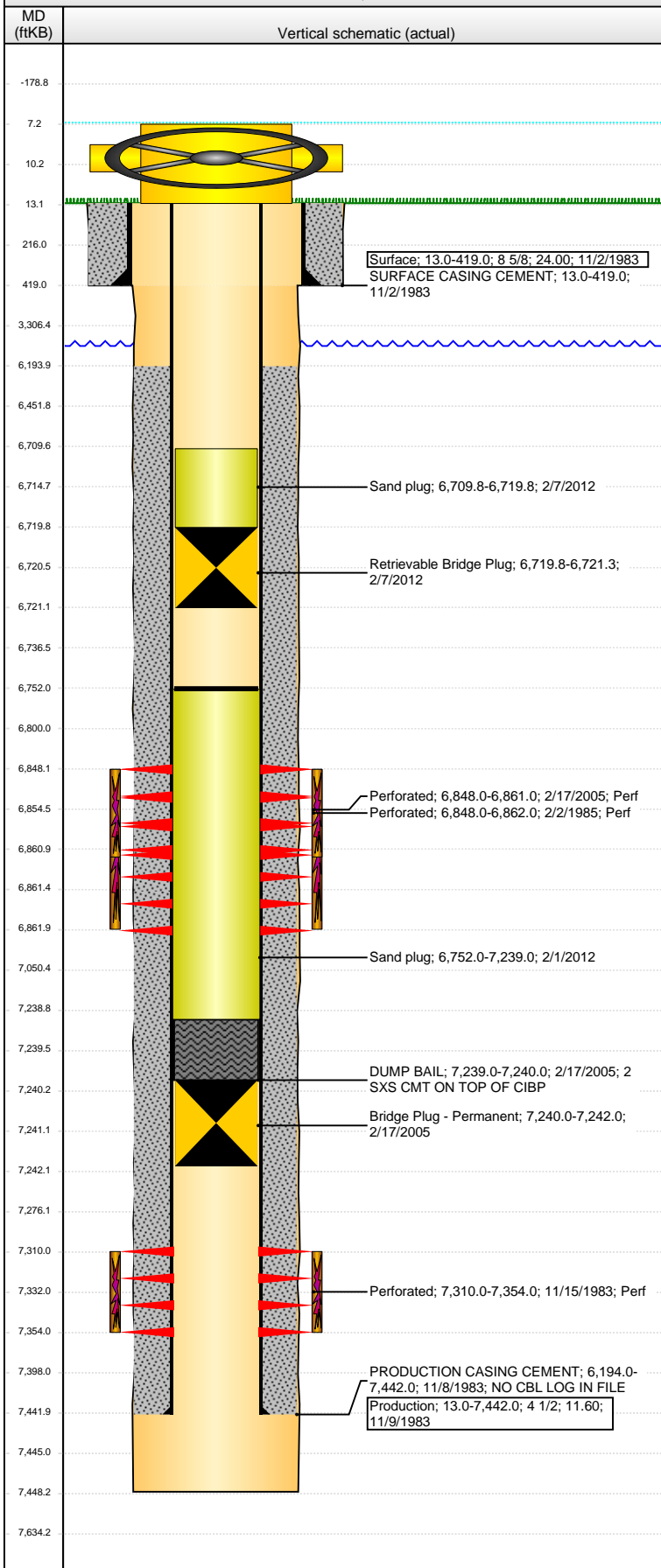


Well Name: REINICK 01

VERTICAL - ORIGINAL HOLE, 4/16/2014 8:53:37 AM



Well Header

API 05-123-11316	Business Unit WATTENBERG	District 15	Well Config VERTICAL
Original KB Elevation (ft) 4,700.00	KB - GL / MSL (ftKB) 13.00	Spud Date 11/1/1983	P & A Date

Comment

WELL DATA FILE SKETCHY; 2/3/2012 - HIC, SET RBP @6721'

Directions To Well

CR 46 & CR 55 N 1/2 WEST 2/10 S.W. INTO

Congressional Location

Quarter 1	Quarter 2	Quarter 3	Quarter 4	Section	Township	Twnshp N...	Range	Rng E/W Dir
		SE	NE	9	4	N	64	W

Bottom Hole Location

North-South Distance (ft)	From N or S Line	East-West Distance (ft)	From E or W Line

Plug Back Total Depths

Date	Depth (ftKB)	Method	Com
11/8/1983	7,396.0	CASING TALLY	FLOAT COLLAR
10/31/1994	7,355.0	TAG	FILL
3/5/2005	7,227.0	TAG	FILL
2/6/2012	6,752.0	TAG	TBG TALLY W/212JTS W/3.39' IN.

Wellbore Sections

Section Des	Size (in)	Act Top, MD (ftKB)	Act Btm, MD (ftKB)
SURFACE	12 1/4	13.0	419.0
PRODUCTION	7 7/8	419.0	7,448.0

Zone Statuses

Zone Name	Status Date	Status	Job
JSND	6/29/1984	PR	DRILLING/COMPLETION - ORIGINAL, 11/1/1983 00:00
JSND	2/2/1985	SI	RECOMPLETION, 1/29/1985 00:00
JSND	10/29/1994	PR	COMMINGLED ZONES, 10/27/1994 00:00
JSND	2/17/2005	SI	RE-FRAC, 2/16/2005 00:00
CODL	2/8/1985	PR	RECOMPLETION, 1/29/1985 00:00
CODL	10/29/1994	PR	COMMINGLED ZONES, 10/27/1994 00:00
CODL	3/11/2005	PR	RE-FRAC, 2/16/2005 00:00
CODL	2/7/2012	SI	

Casing Strings

Surface, 419.0ftKB

Casing Description	Run Date	OD (in)	Wt/Len (l...)	Grade	Top, MD (ft...)	MD (ftKB)
Surface	11/2/1983	8 5/8	24.00		13.0	419.0

Production, 7,442.0ftKB

Casing Description	Run Date	OD (in)	Wt/Len (l...)	Grade	Top, MD (ft...)	MD (ftKB)
Production	11/9/1983	4 1/2	11.60		13.0	7,442.0

Cement

Description	Top Depth (ftKB)	Bottom Depth (ftKB)
SURFACE CASING CEMENT	13.0	419.0
Description	Top Depth (ftKB)	Bottom Depth (ftKB)
PRODUCTION CASING CEMENT	6,194.0	7,442.0
Description	Top Depth (ftKB)	Bottom Depth (ftKB)
DUMP BAIL	7,239.0	7,240.0

Tubing Components

Item Des	OD (in)	Wt (lb/ft)	Grade	Jts	Len (ft)	Btm (ftKB)	Btm (TVD) (ftKB)

Perforation Data

Zone	Bnch/St g	Entered Shot Total	Top (ftKB)	Btm (ftKB)	Date
CODL, ORIGINAL HOLE		52	6,848.00	6,861.00	2/17/2005
CODL, ORIGINAL HOLE		14	6,848.00	6,862.00	2/2/1985
JSND, ORIGINAL HOLE		38	7,310.00	7,354.00	11/15/1983

Stimulations & Treatments

Date	Zone	Primary Job Type	
11/20/1983	JSND, ORIGINAL HOLE	DRILLING/COMPLETION - ORIGINAL	
Technical Result		Tech Result Details	Tech Result Note
Comment			

Well Name: REINICK 01

VERTICAL - ORIGINAL HOLE, 4/16/2014 8:53:39 AM

Stimulations & Treatments

Date 1/30/1985	Zone CODL, ORIGINAL HOLE	Primary Job Type RECOMPLETION
Technical Result	Tech Result Details	Tech Result Note

Comment
DATA FOR CDL RC SKETCHY

Date 3/3/2005	Zone CODL, ORIGINAL HOLE	Primary Job Type RE-FRAC
Technical Result Success	Tech Result Details According to Plan	Tech Result Note

Comment

Other In Hole

Run Date	Des	OD (in)	Top (ftKB)	Btm (ftKB)
2/17/2005	Bridge Plug - Permanent	4	7,240.0	7,242.0
2/1/2012	Sand plug	4 1/4	6,752.0	7,239.0
2/7/2012	Sand plug	4	6,709.8	6,719.8
2/7/2012	Retrievable Bridge Plug	4	6,719.8	6,721.3

Logs

Date	Type	Top, MD (ftKB)	Btm, MD (ftKB)
11/8/1983	COMPENSATED DENSITY	4,200.0	7,448.0
11/8/1983	INDUCTION	13.0	7,446.0
11/8/1983	RESERVOIR ANALYSIS	6,400.0	7,448.0
3/24/2011	GYRO	10.0	6,800.0

