



CROW CREEK STATE AC36-72HN **TVD**
5":100'

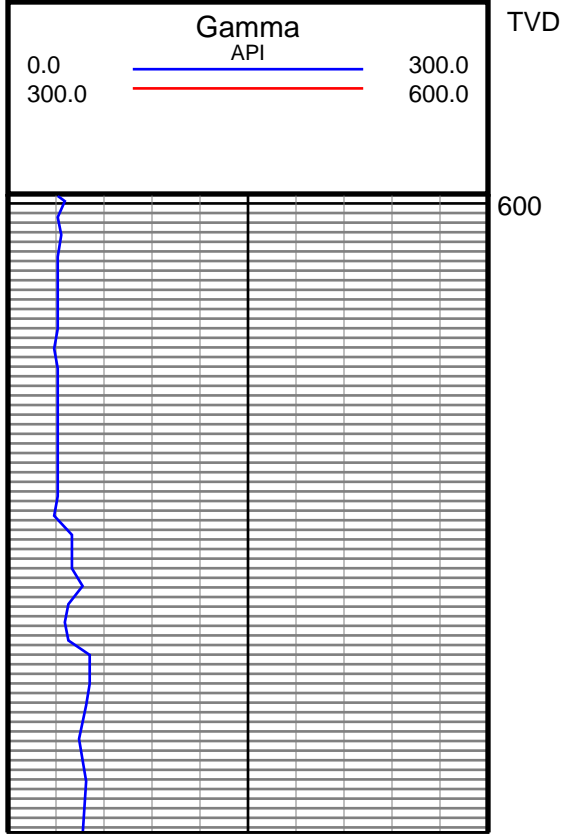
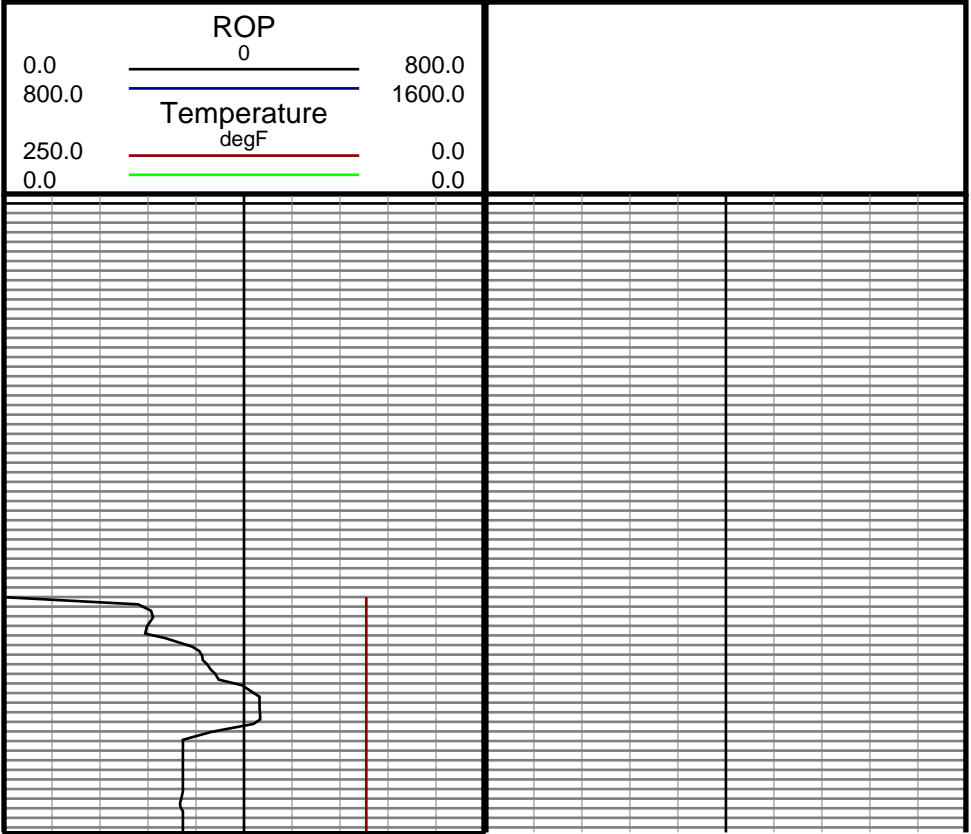
Company: NOBLE ENERGY
Well Name: CROW CREEK STATE AC36-72HN
UWI or LSD: 05-123-37418
Rig Id: H&P 277
State: CO
County/Parish: WELD COUNTY
Country: USA
Survey Company: DRILTECH, LLC
Job number: 2013-336-IDDT-CO
MARK LARUE MWD OPERATOR
JOSH CAYLOR MWD OPERATOR

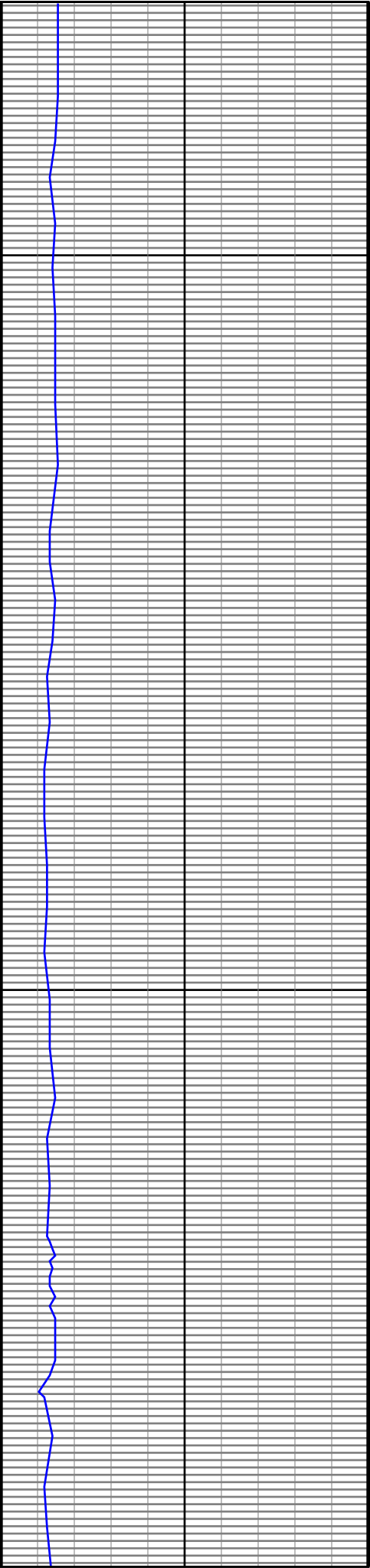
Log measurements: Gamma, ROP, Temp
Depth measured from: 641
Maximum temperature: 216.7
Start: 641 ft 11-10-2013
End: 11211 ft 11-15-2013

Casing Depth Size	Mud Type: WATER BASE	Elevations
Surface: 631 9 5/8	Density: 9.3	KB: 4872
Intermediate: 7061 7	Viscosity: 33	GL: 4848
	Rm: Rmf: Rmc:	DF:

Run	Bit Size	Offsets	Gamma Survey	Start	End	Start	End
1	8 3/4	42.00	54.00	631	6123	11/10/2013	11/11/2013
2	8 3/4	35.00	47.00	6123	7071	11/11/2013	11/12/2013
3	6 1/8	42.00	54.00	7071	11211	11/13/2013	11/15/2013
4							
5							
6							
7							
8							
9							
10							

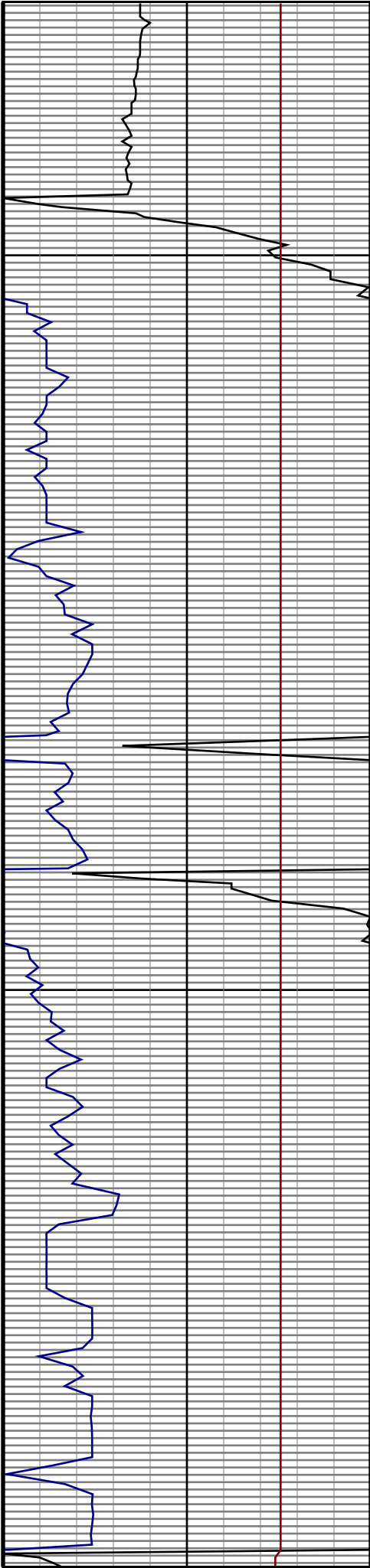
DRILTECH, LLC uses its best efforts to provide its customers with accurate information and interpretations in conjunction with services performed but will not be held liable or responsible for the accuracy of such information or interpretation.

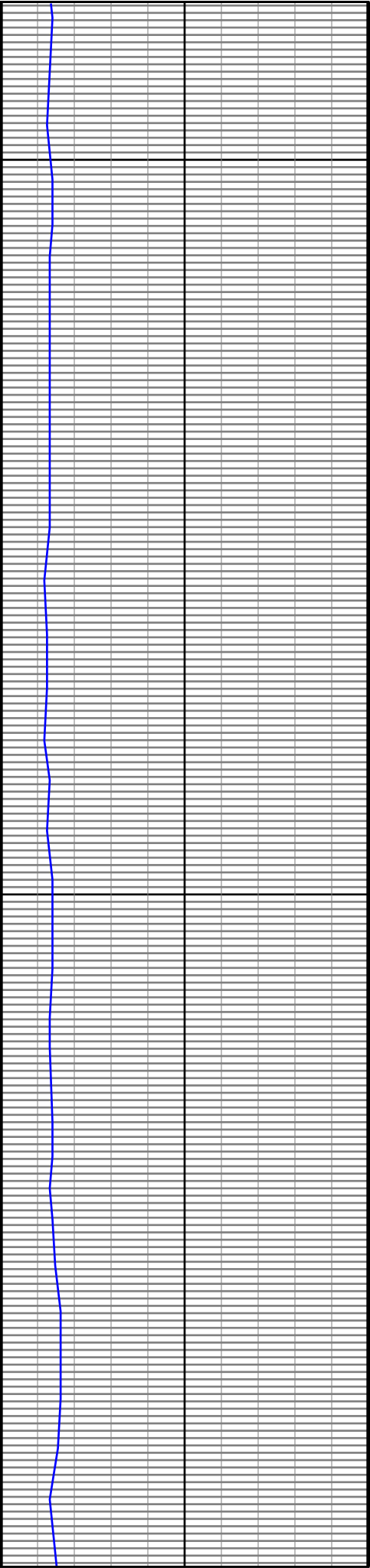




700

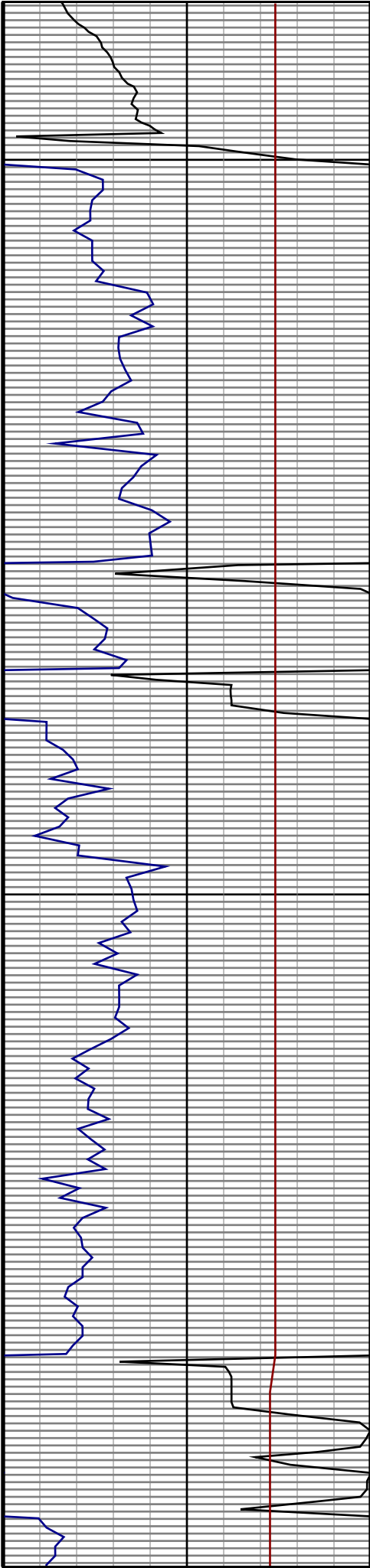
800

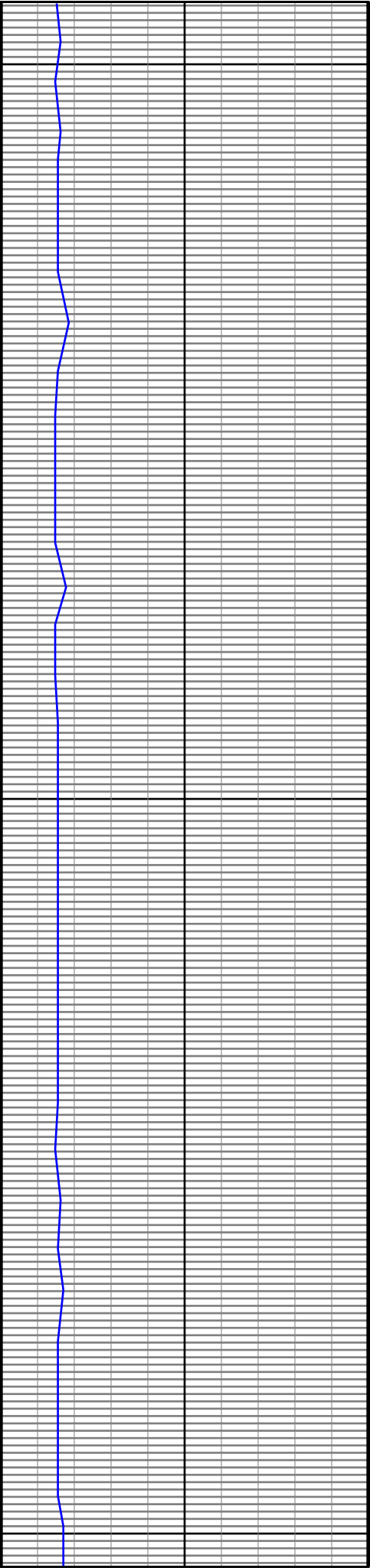




900

1000

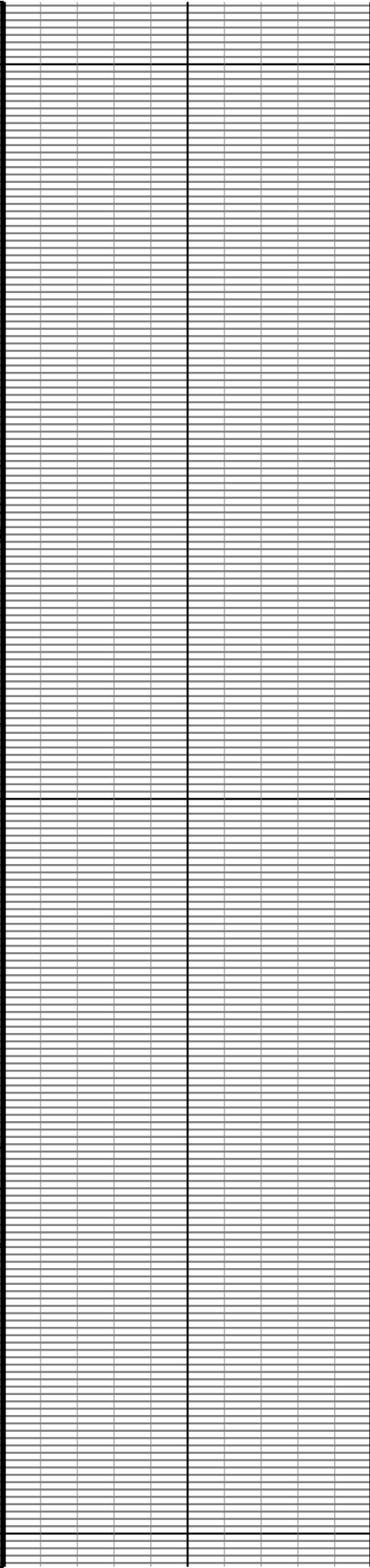
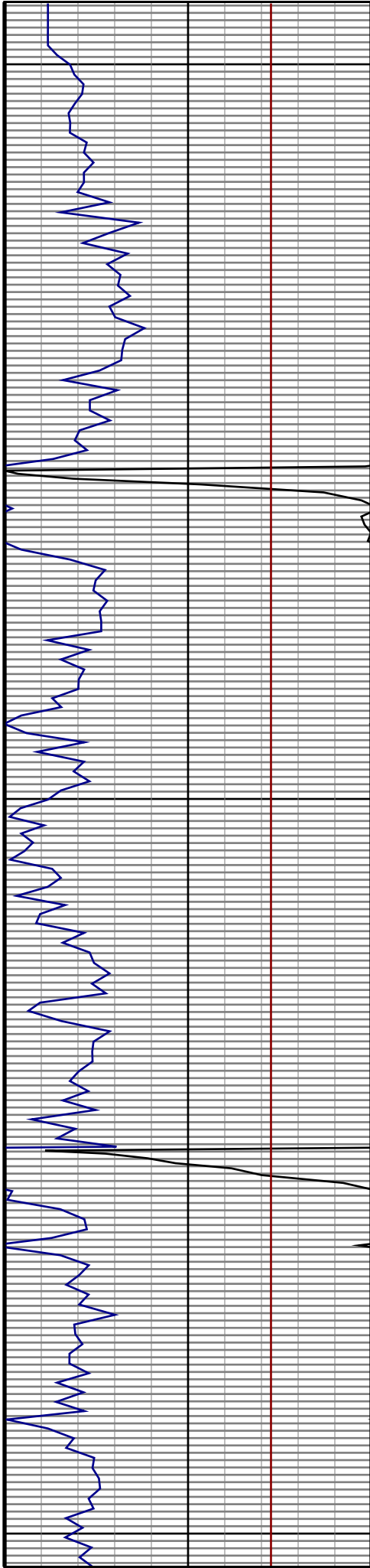


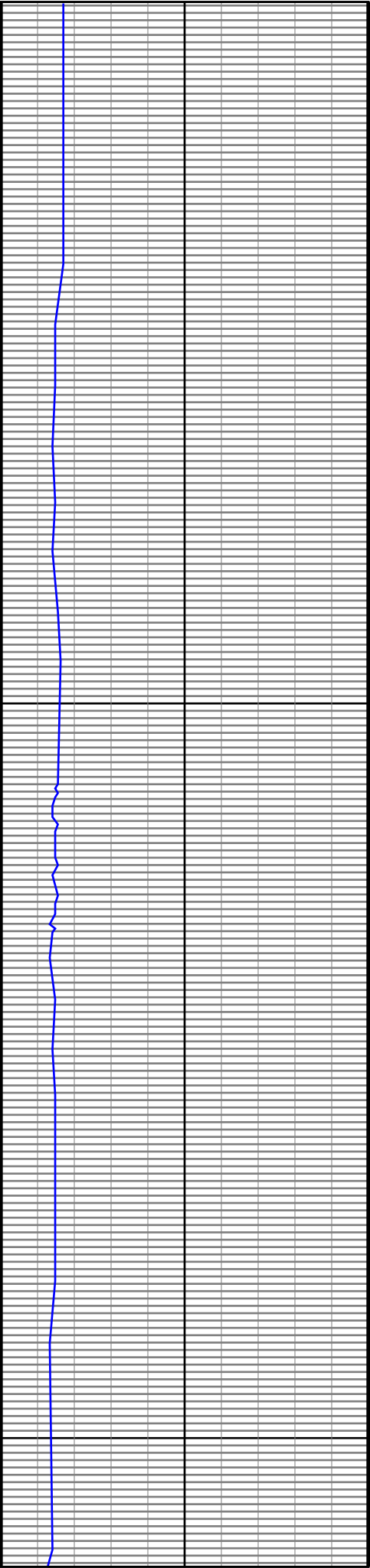


1100

1200

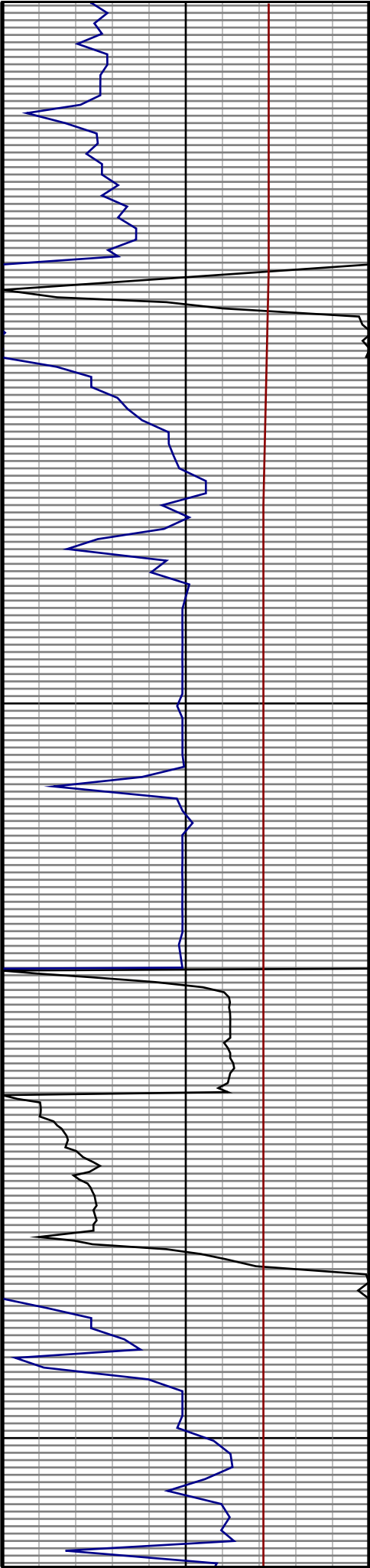
1300

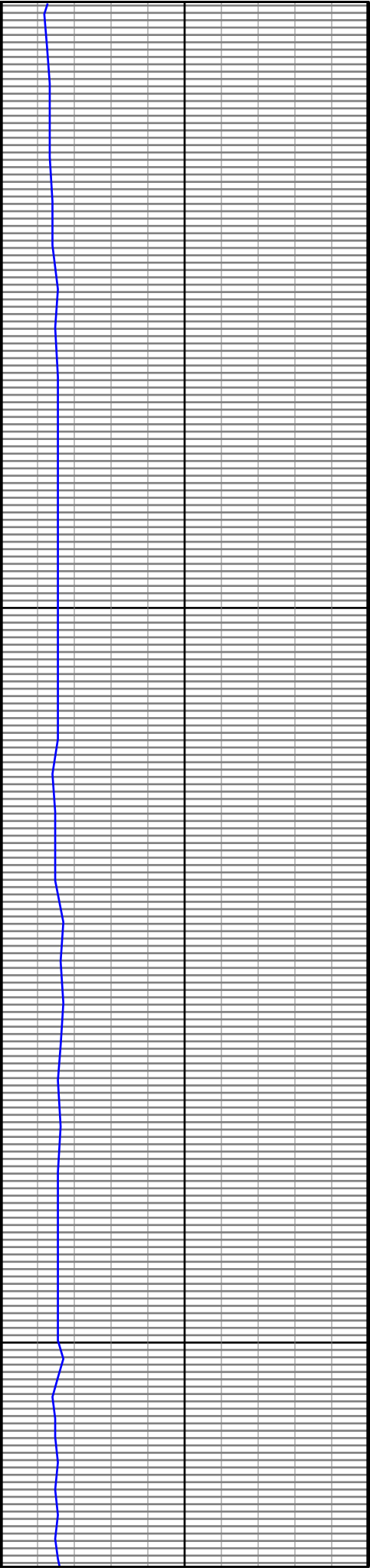




1400

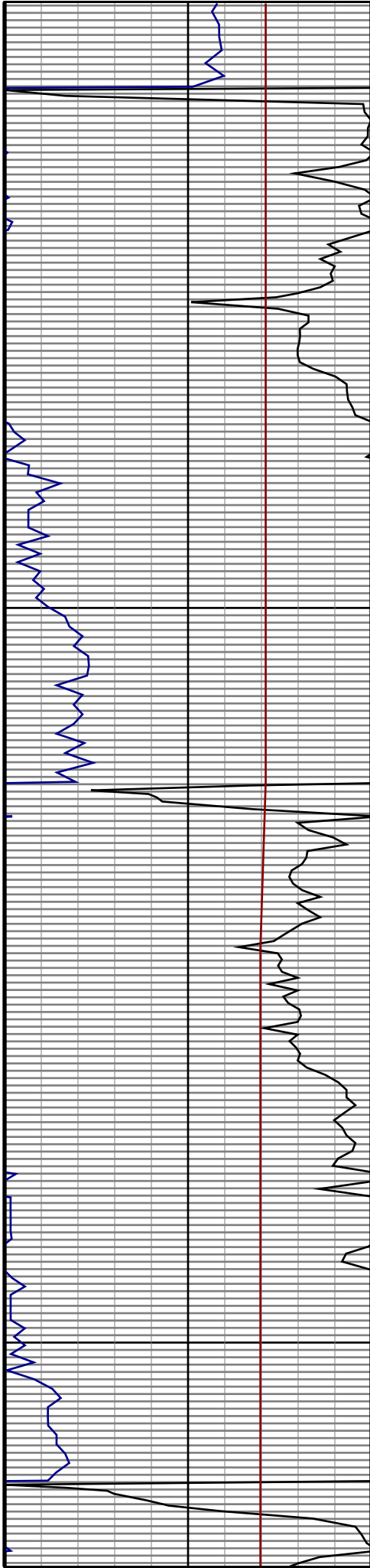
1500

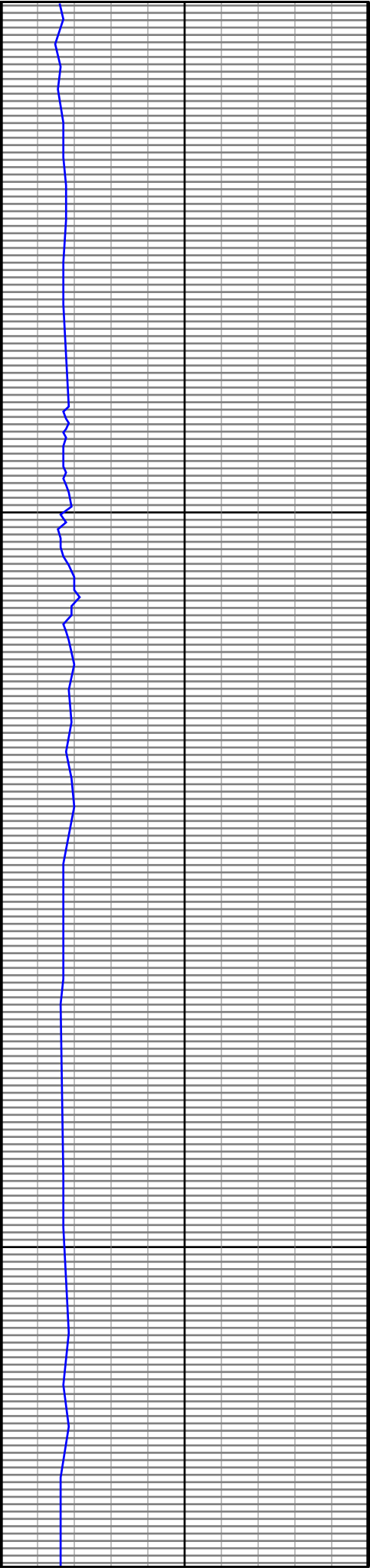




1600

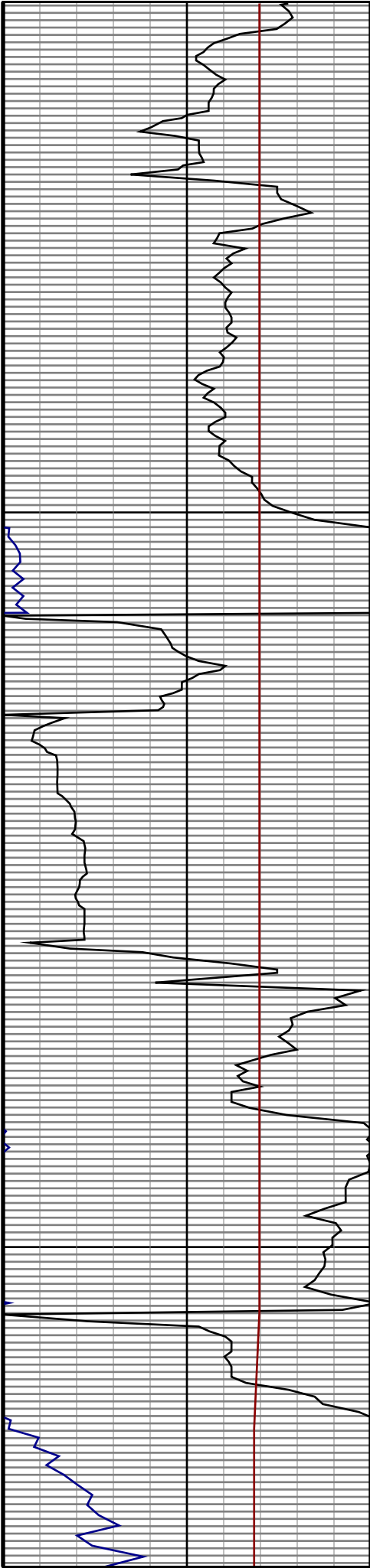
1700

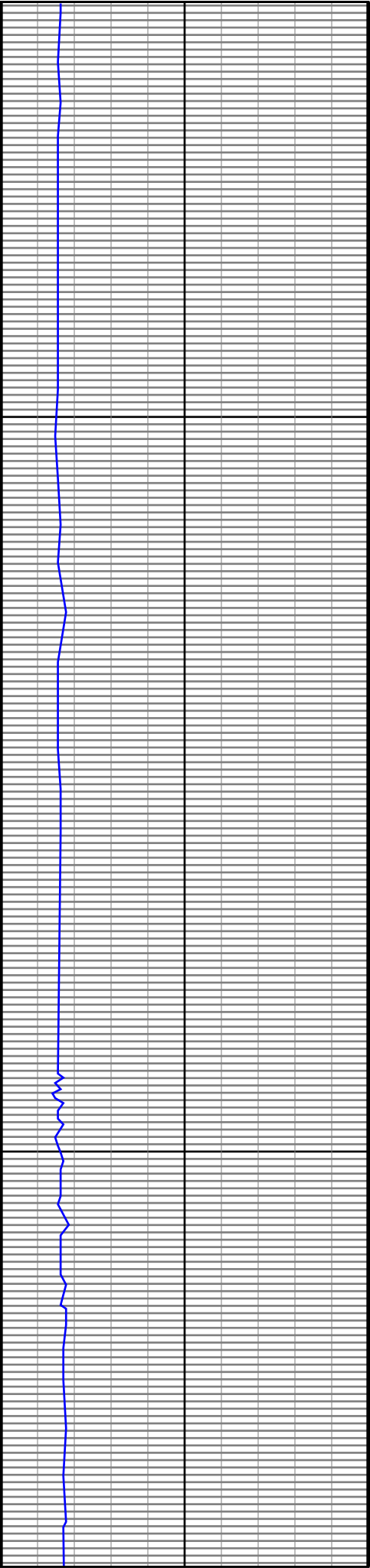




1800

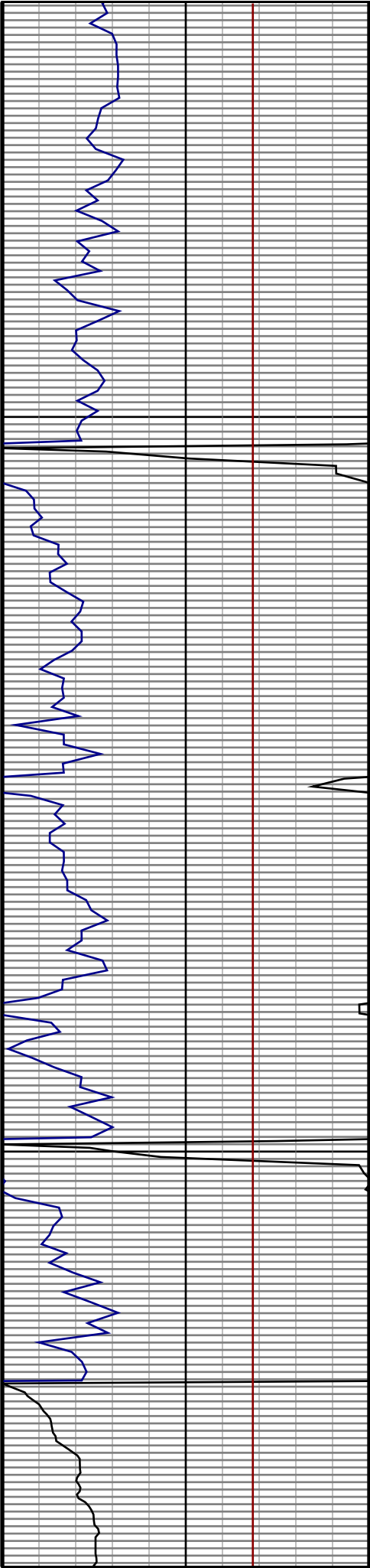
1900

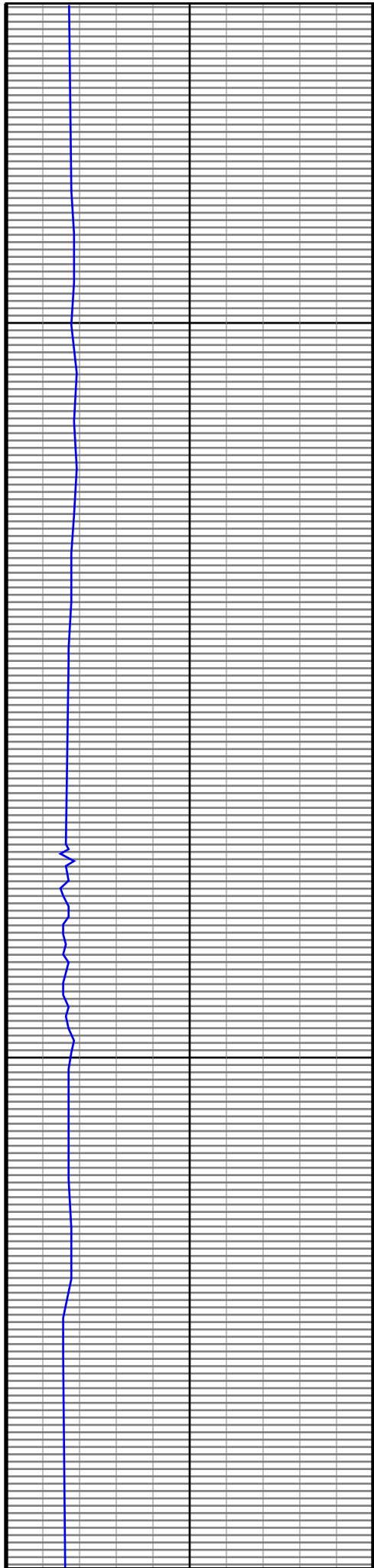




2000

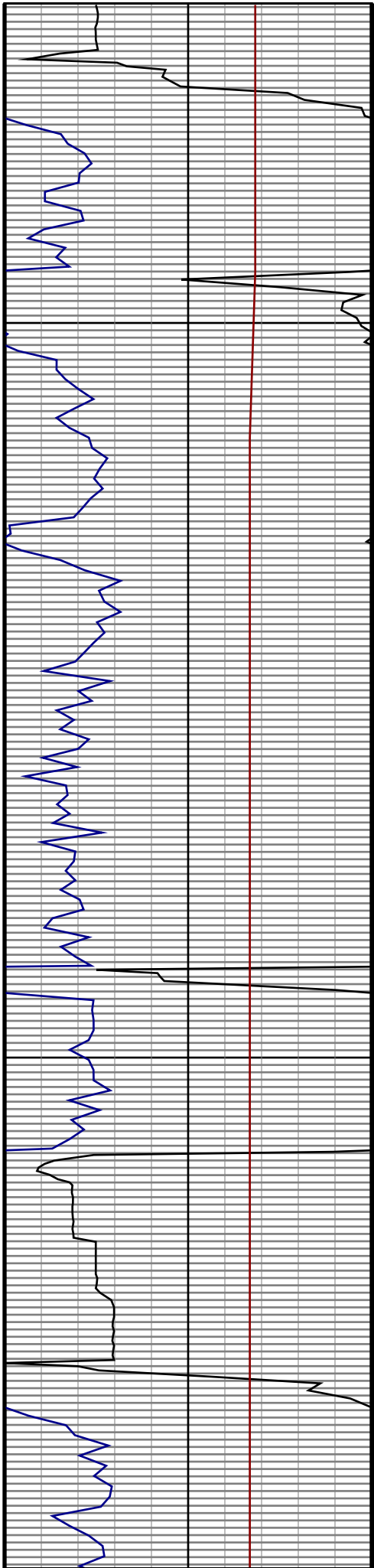
2100

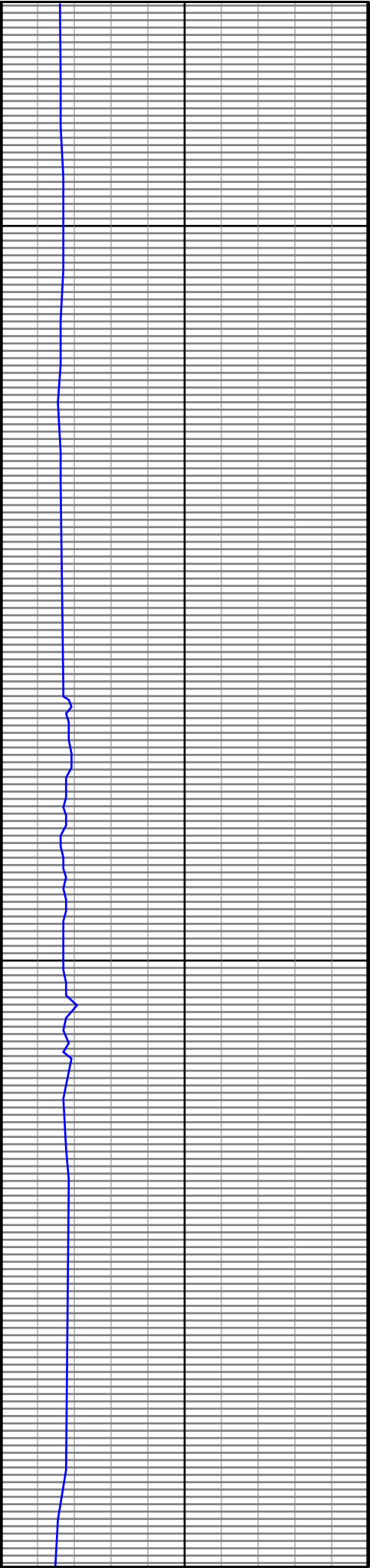




2200

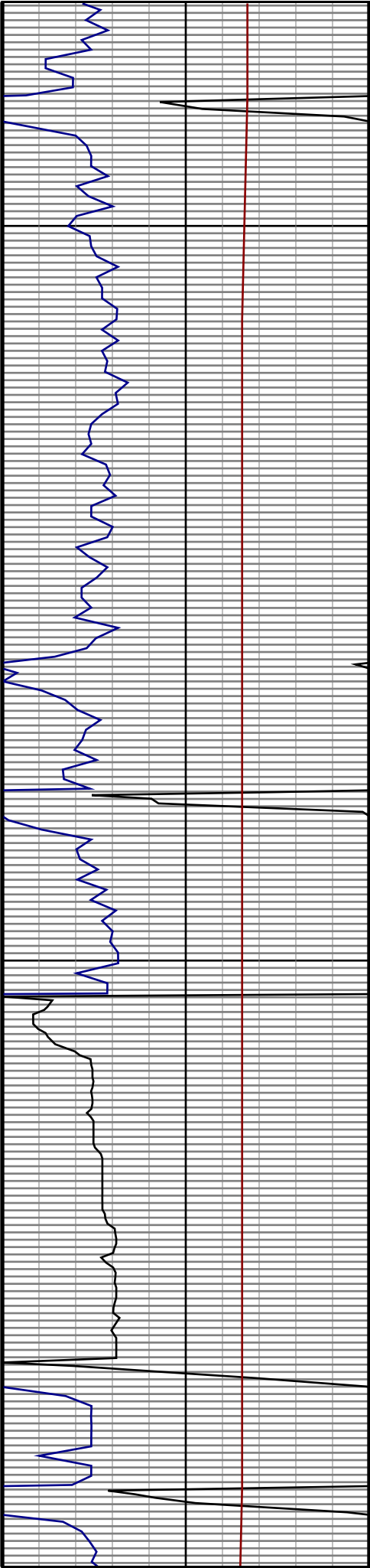
2300

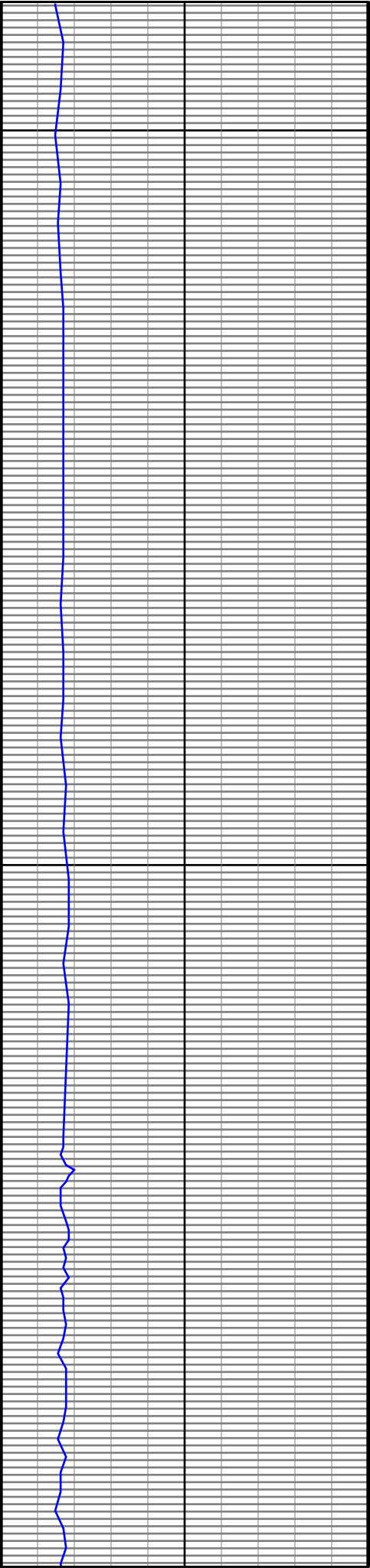




2400

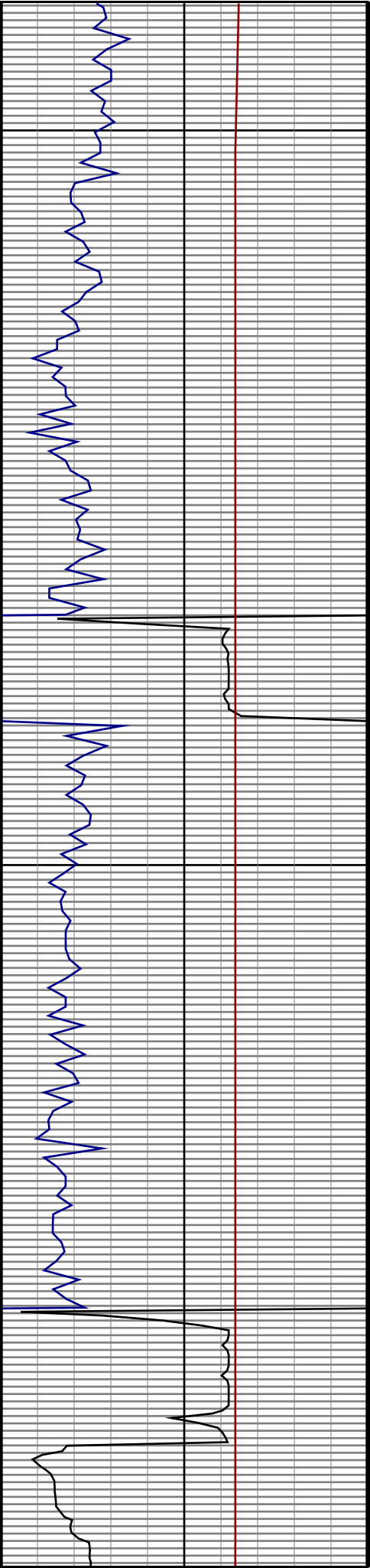
2500

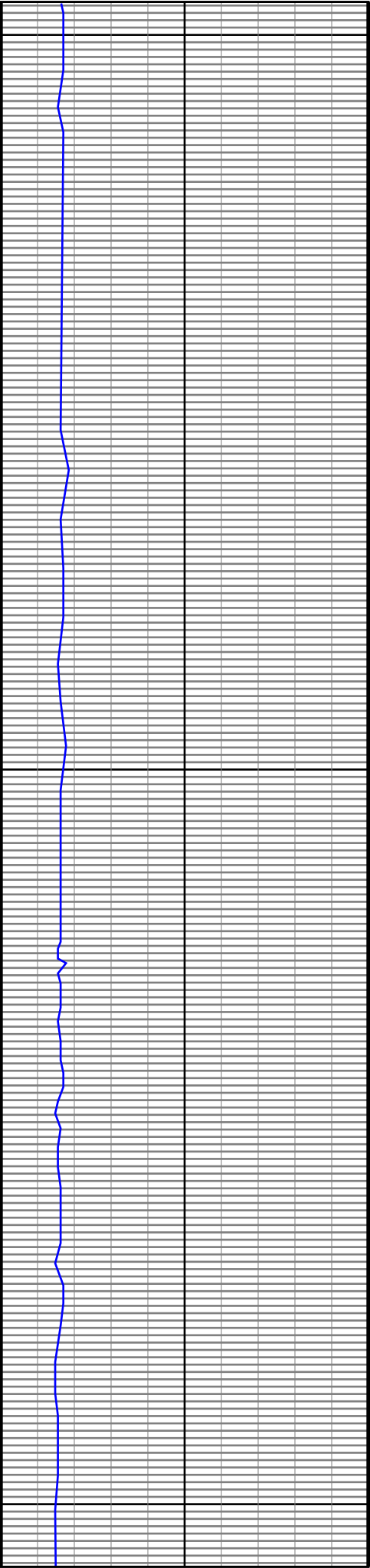




2600

2700

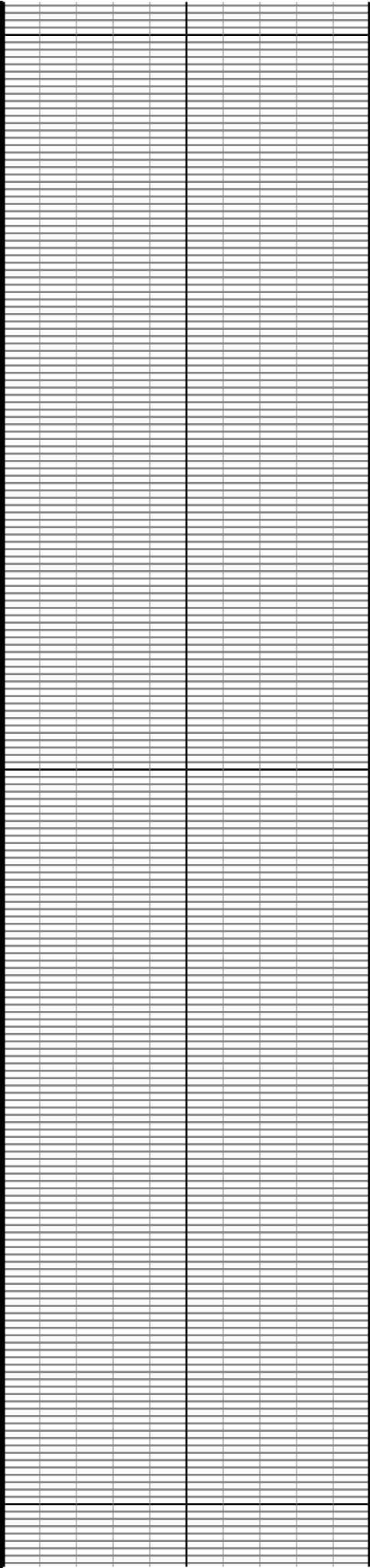
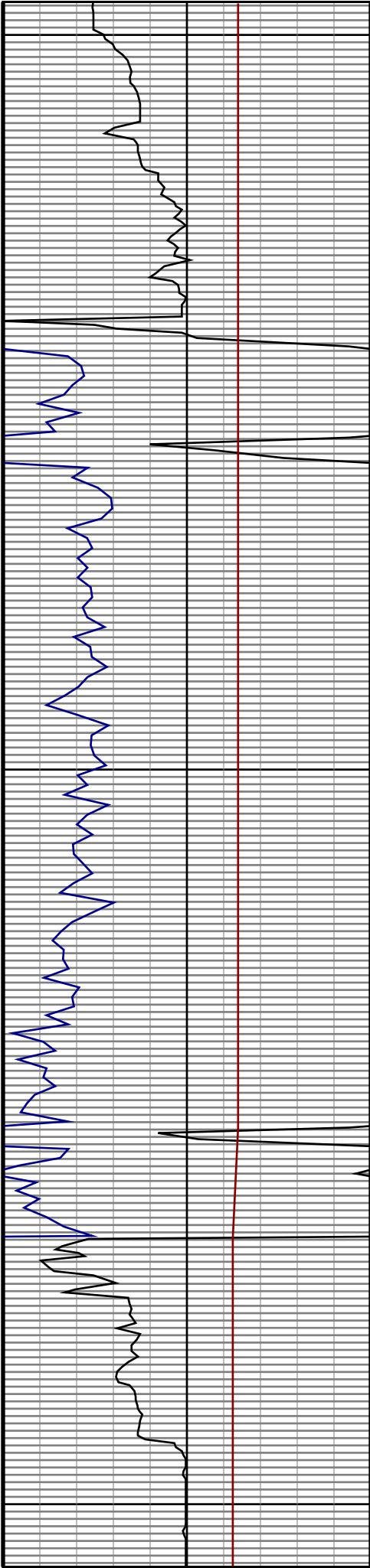


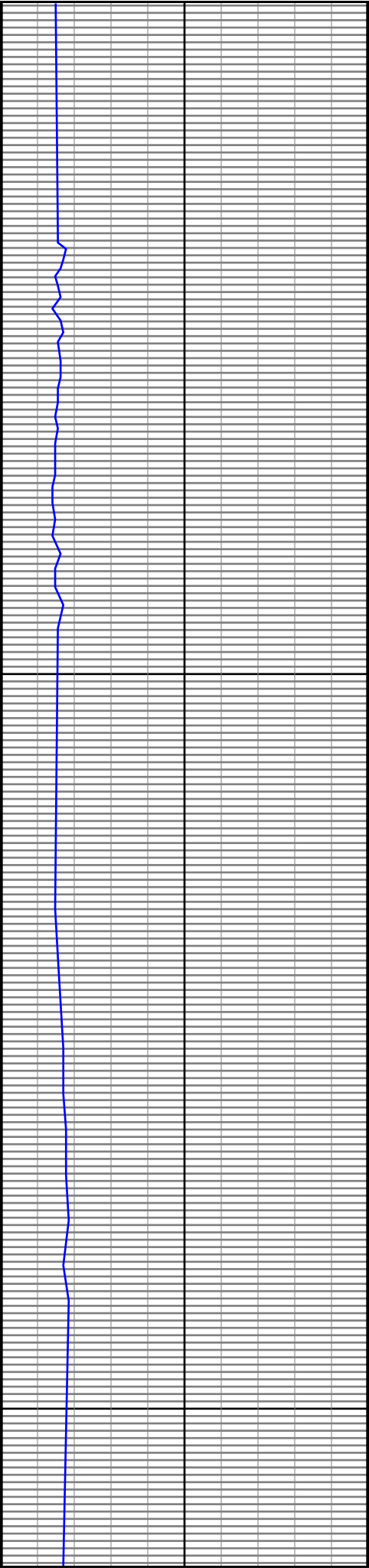


2800

2900

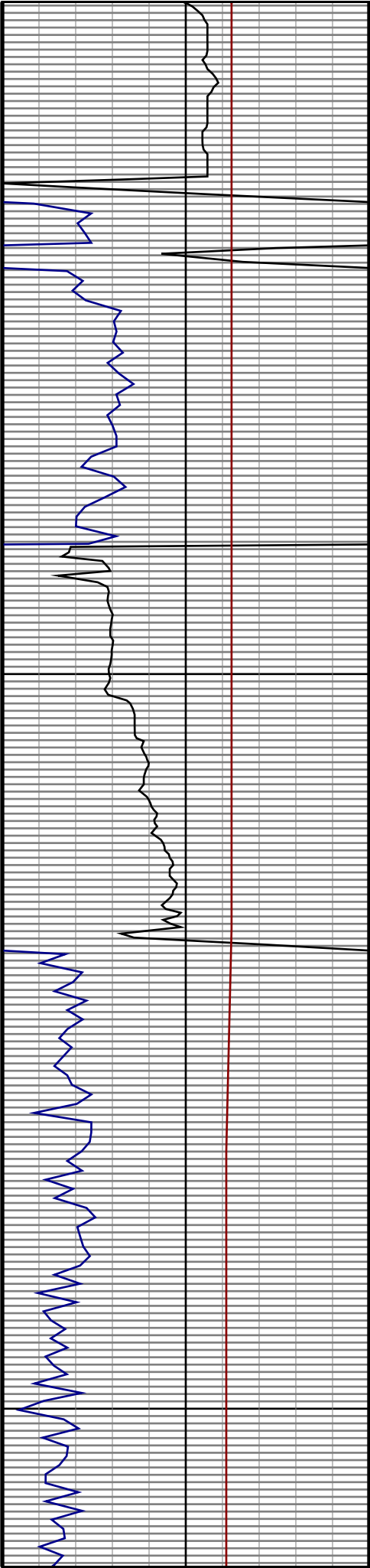
3000

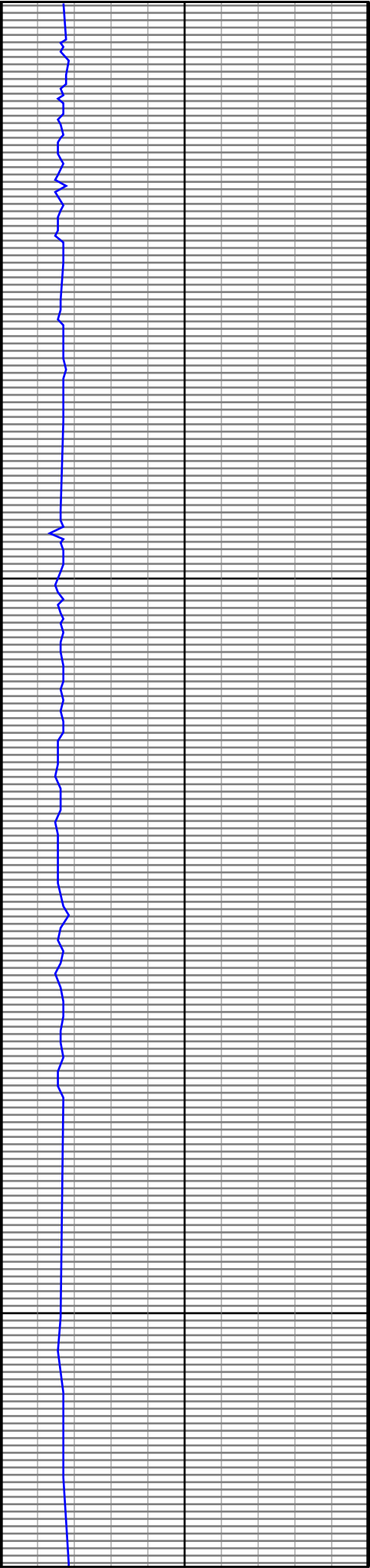




3100

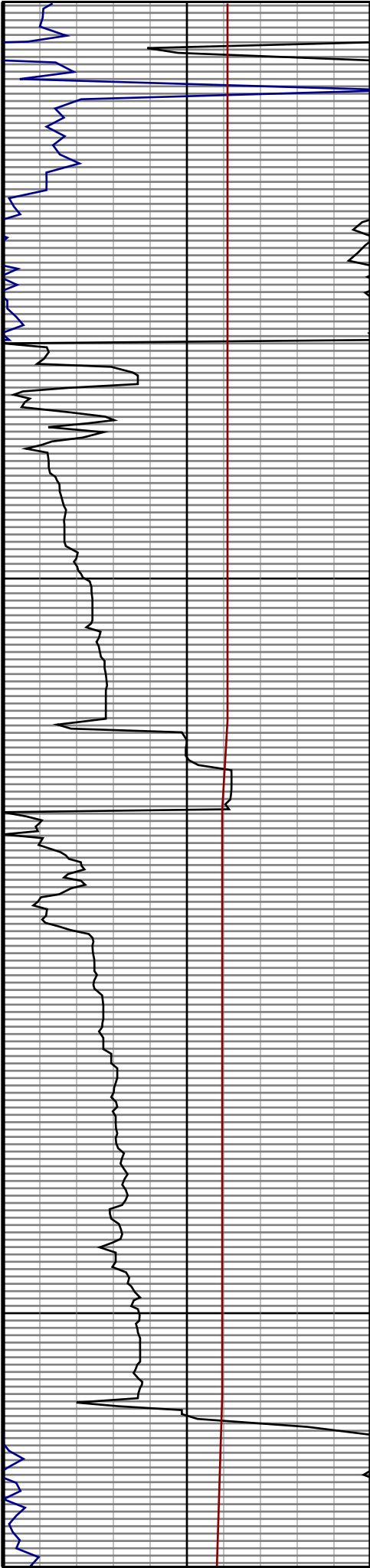
3200

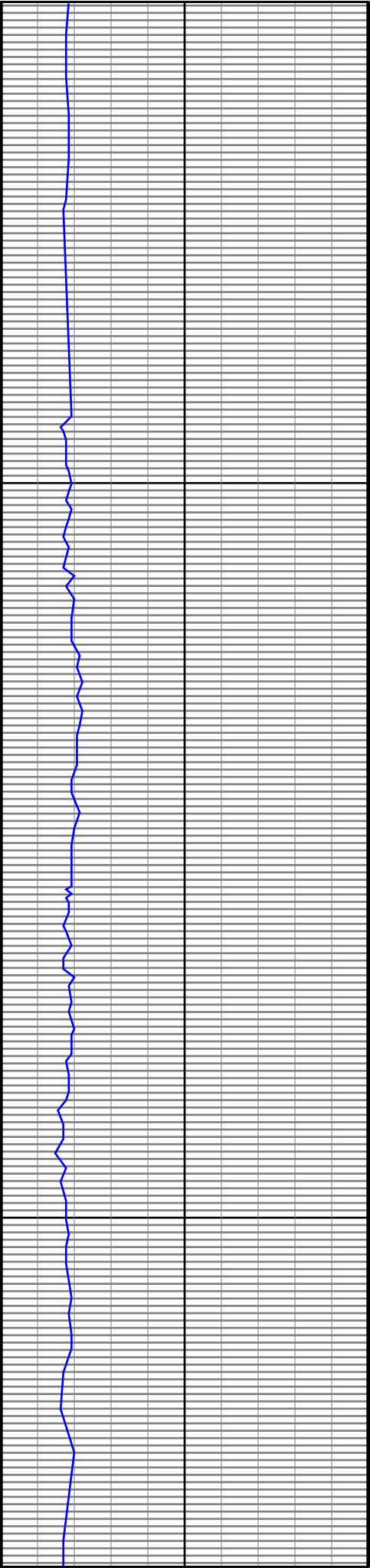




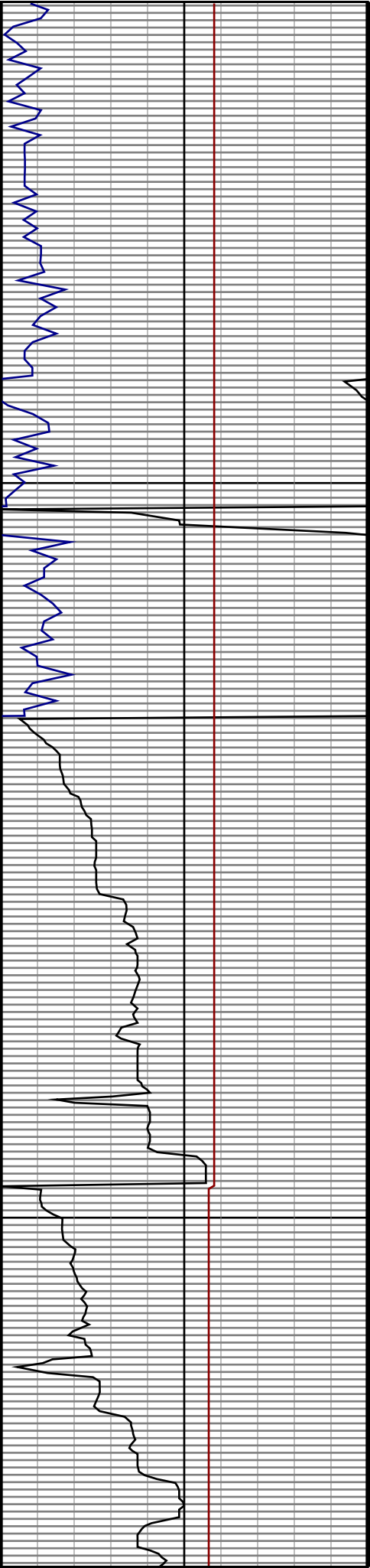
3300

3400

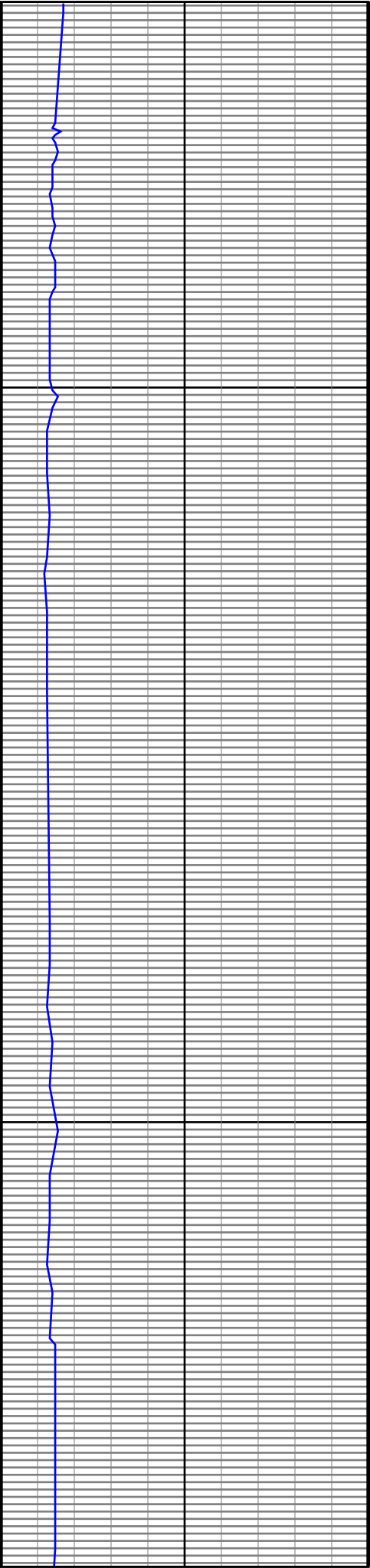




3500

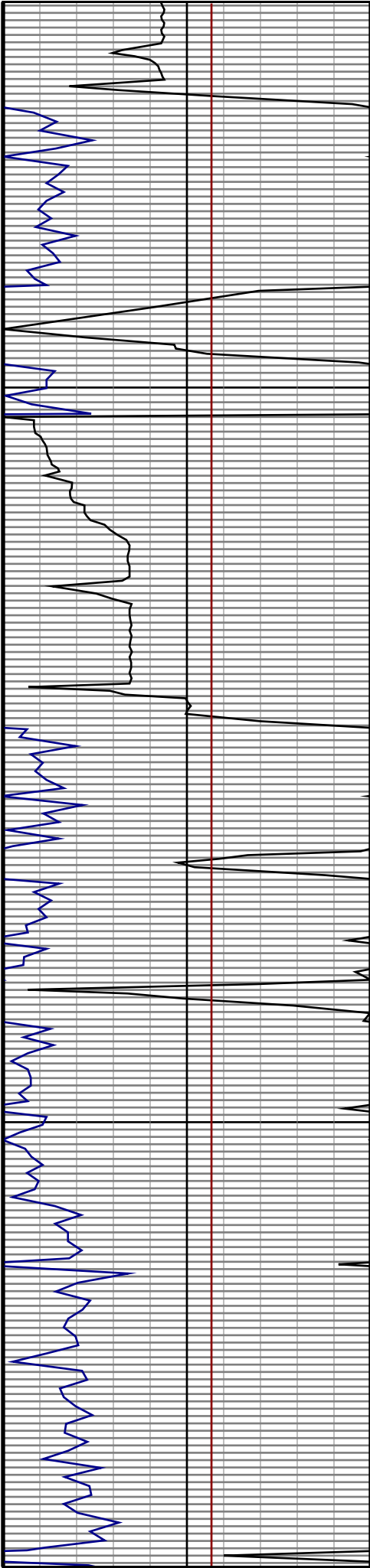


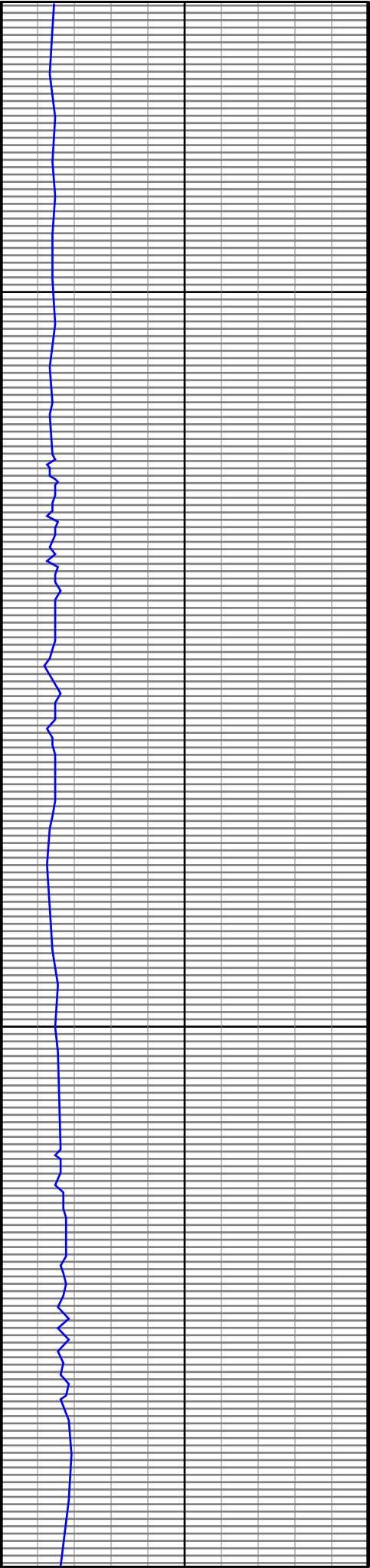
3600



3700

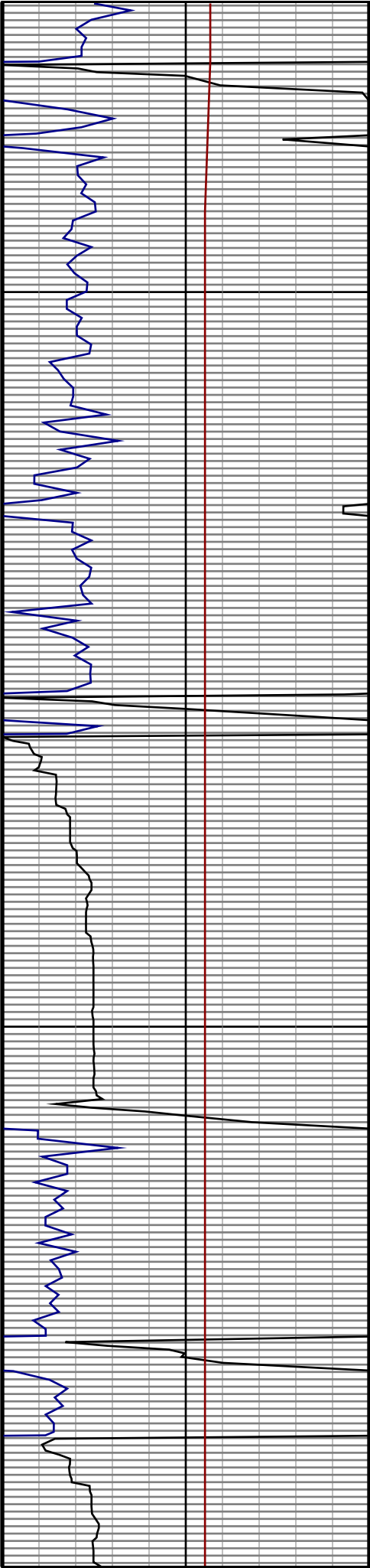
3800

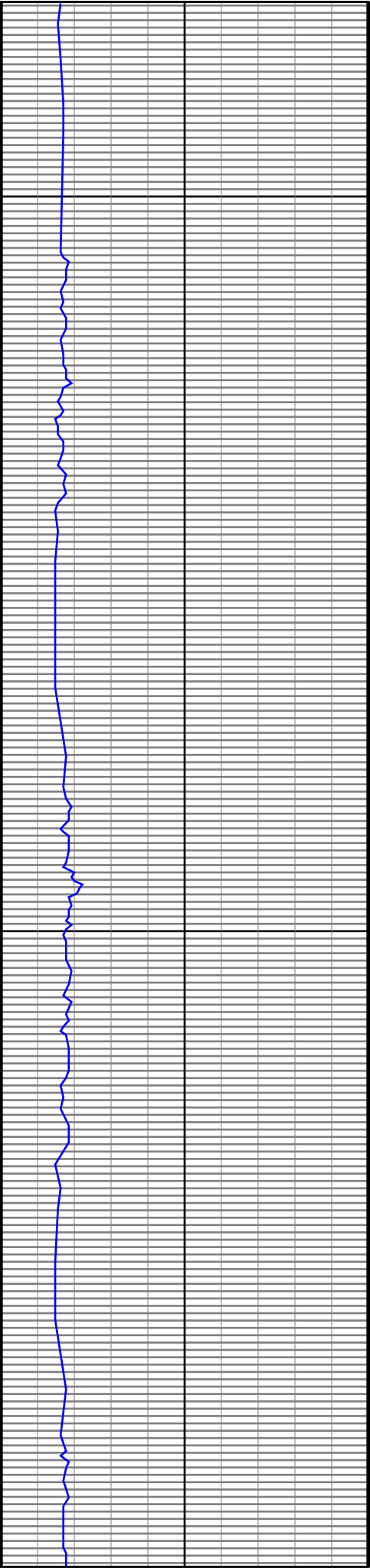




3900

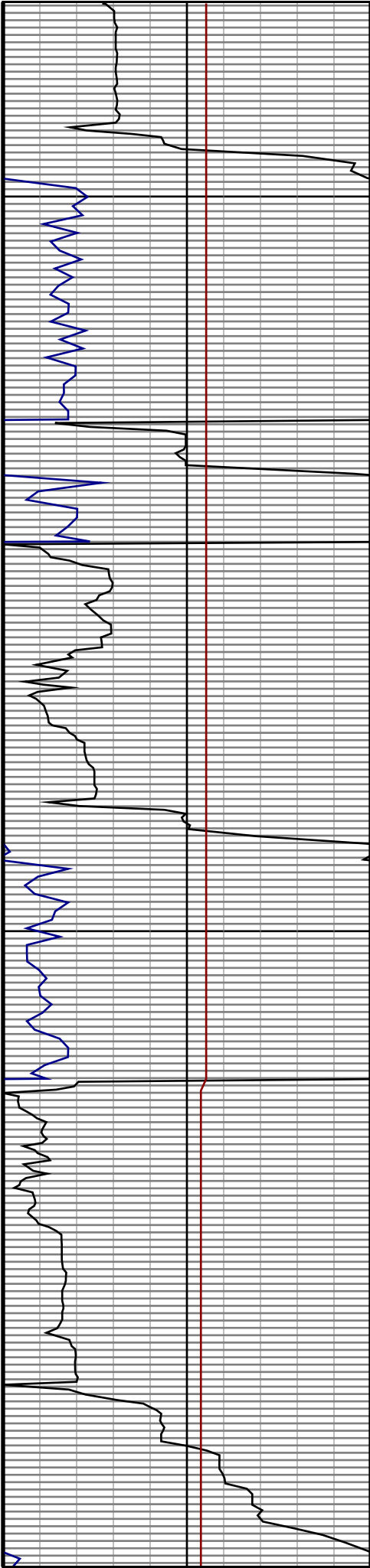
4000

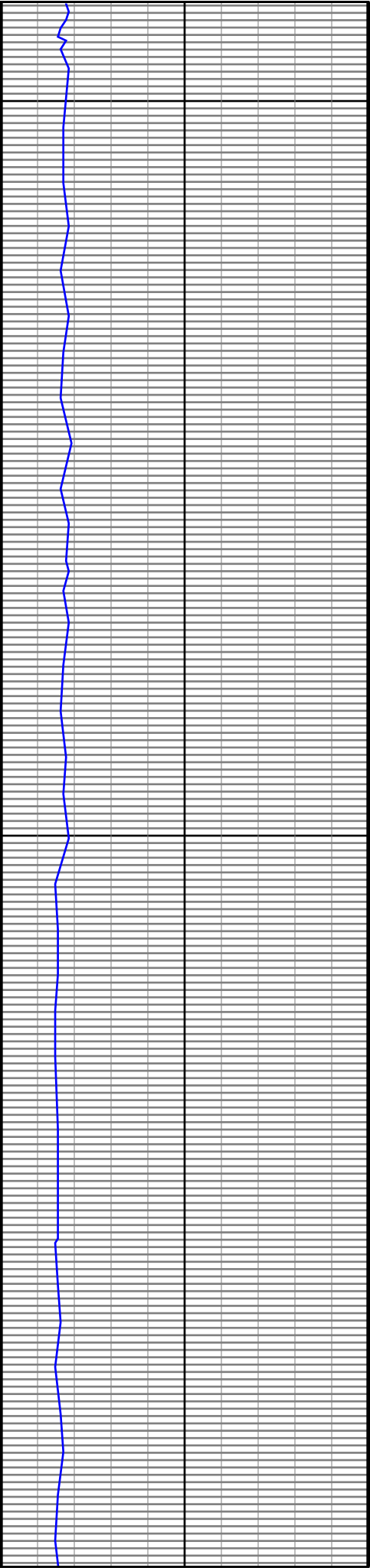




4100

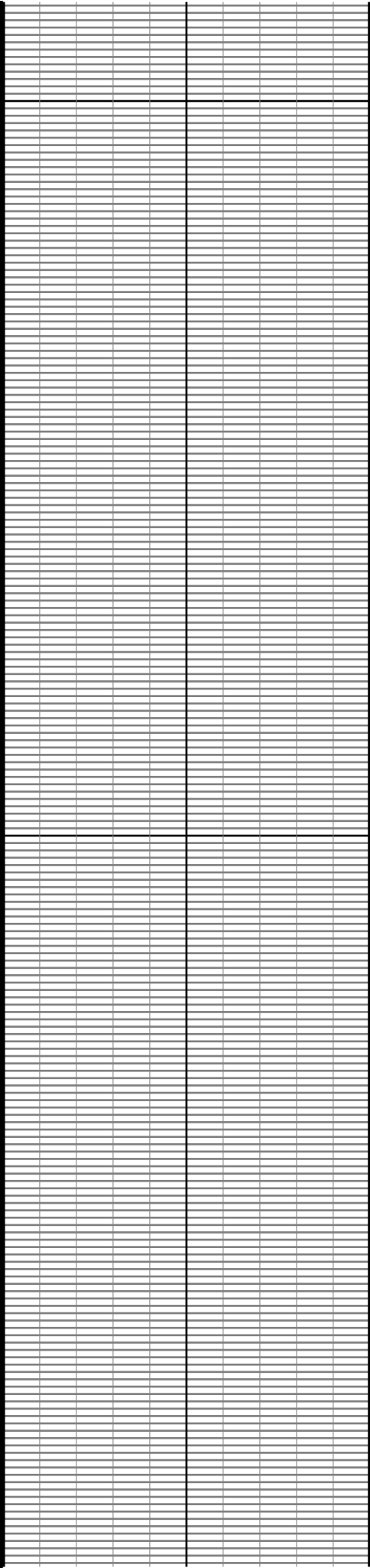
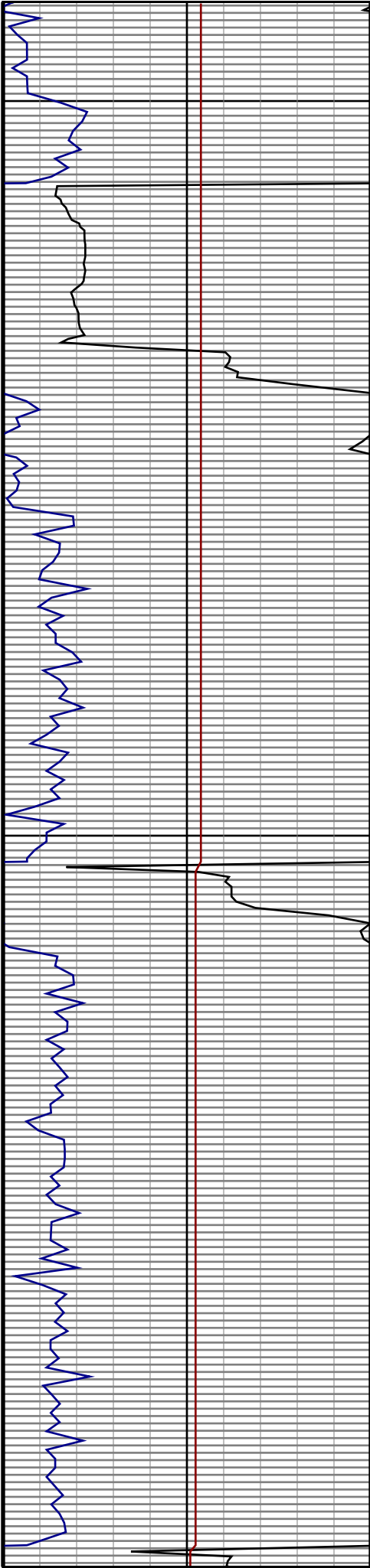
4200

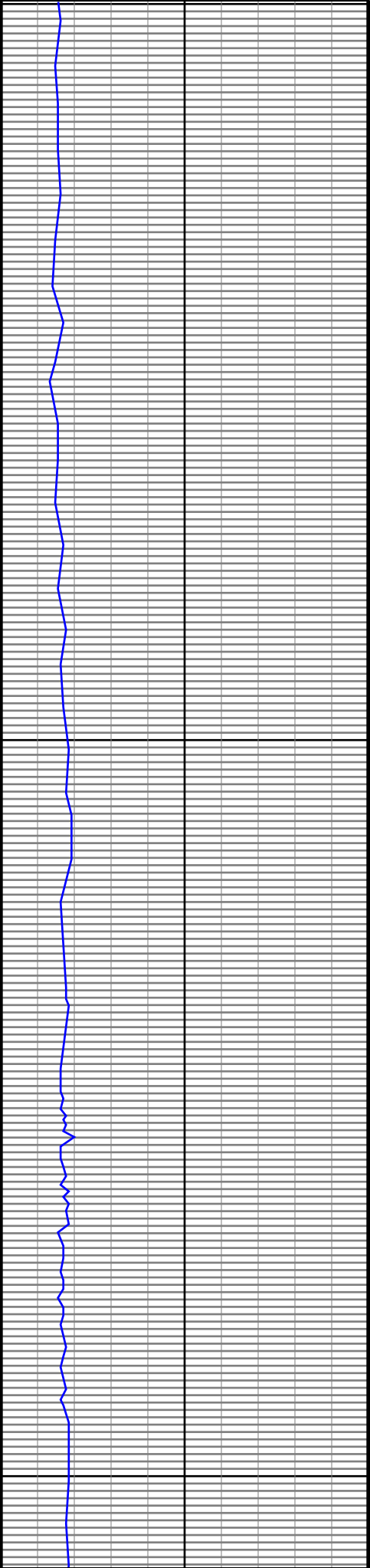




4300

4400

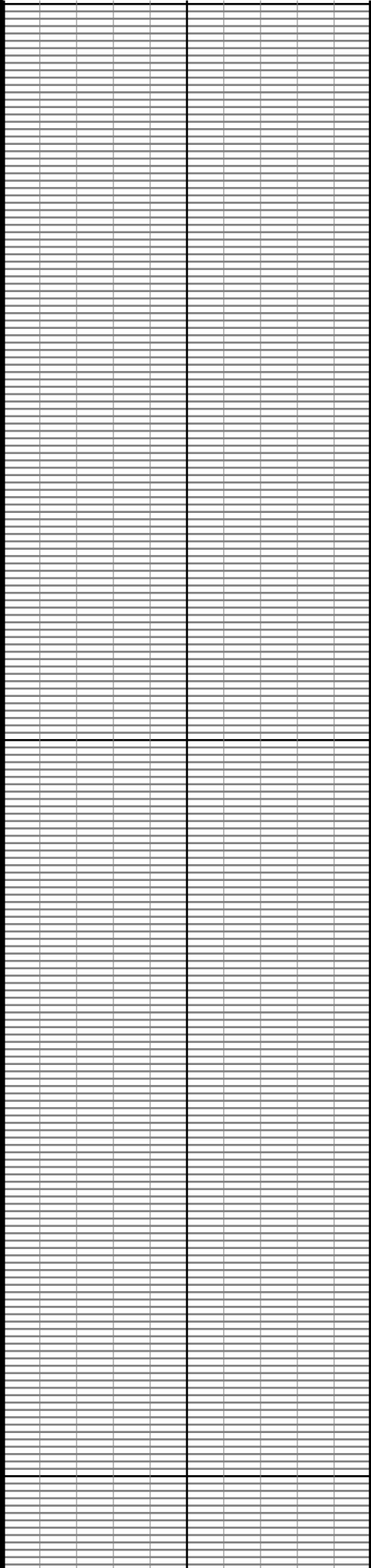
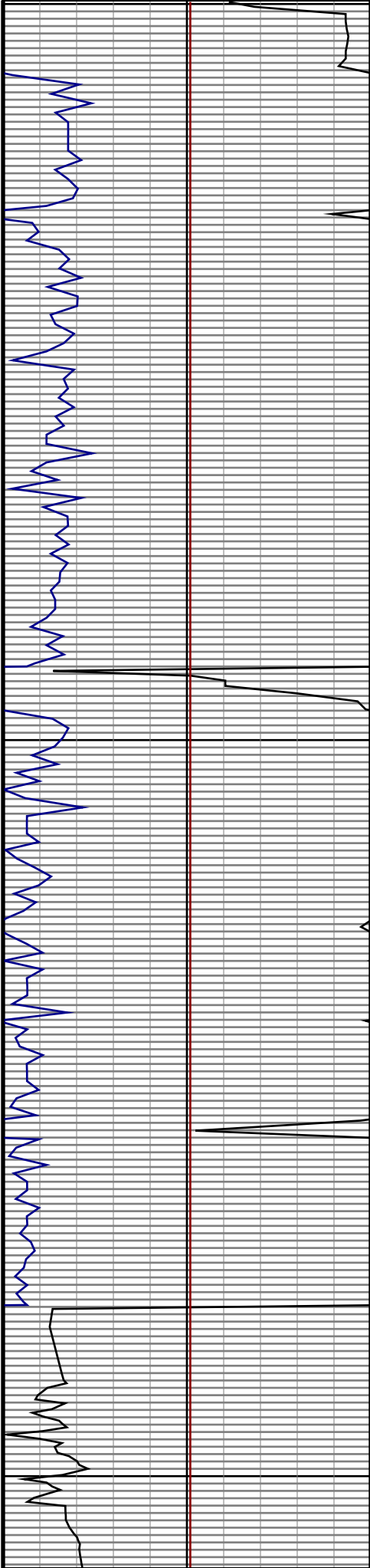


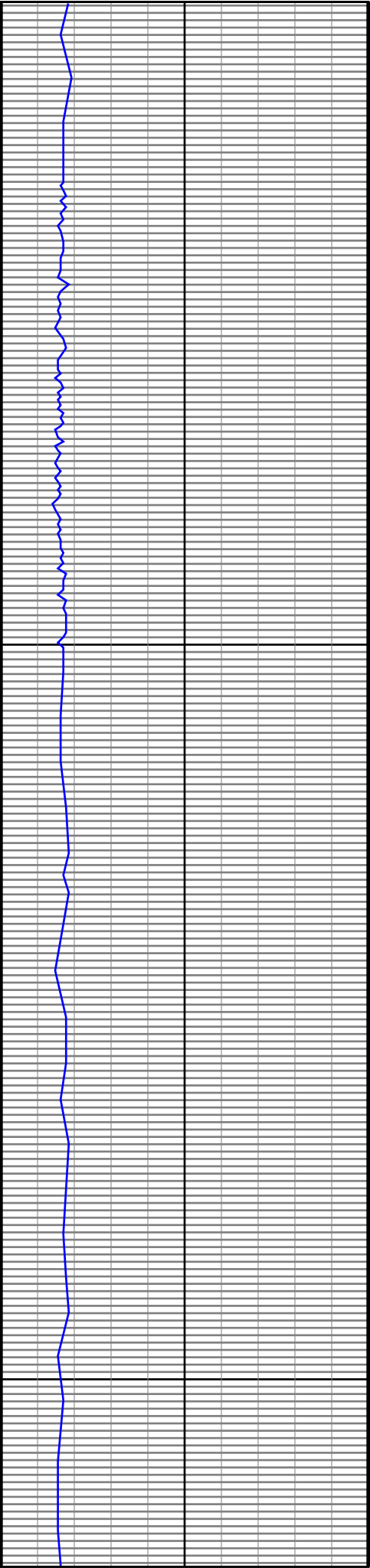


4500

4600

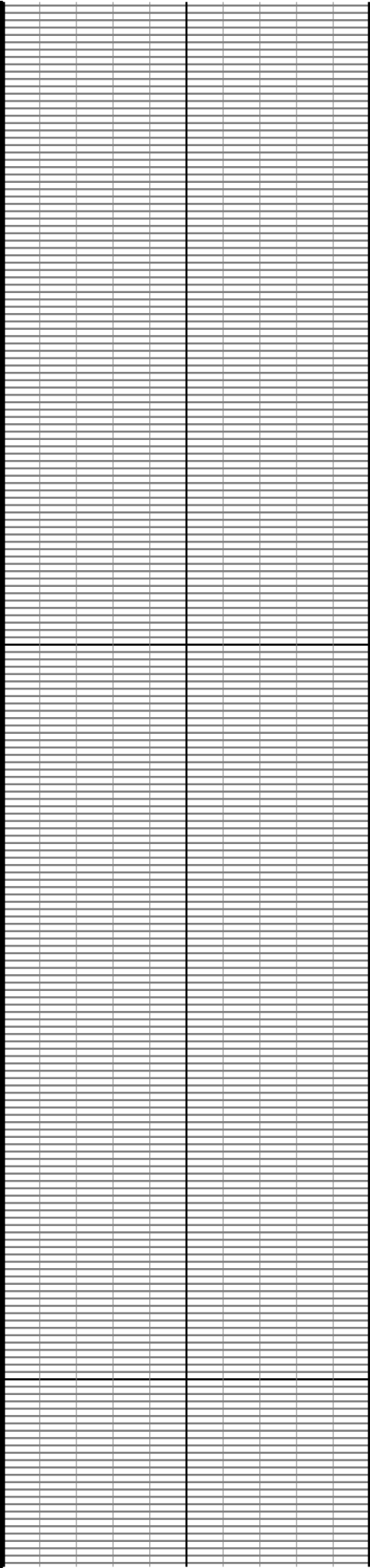
4700

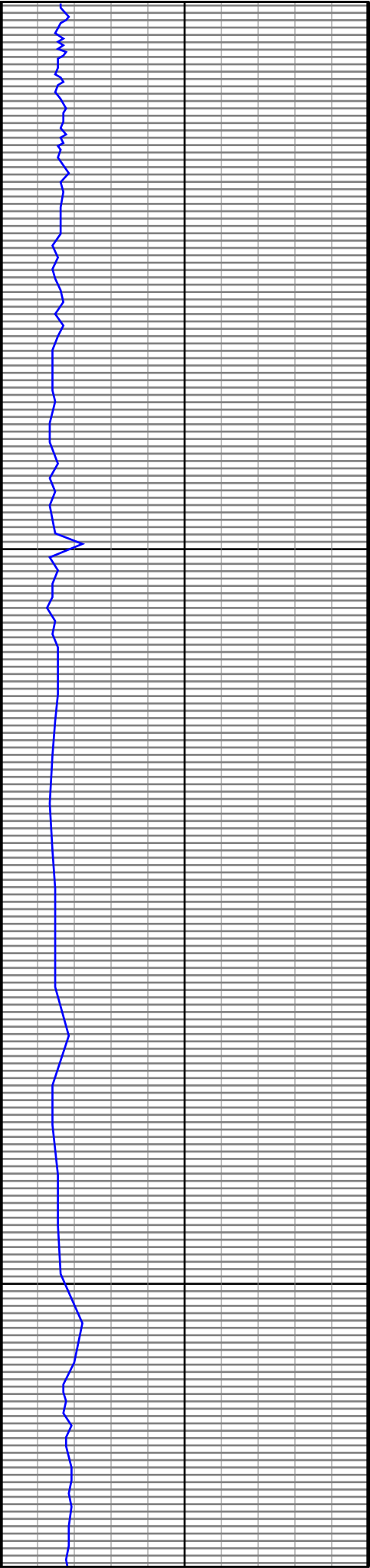




4800

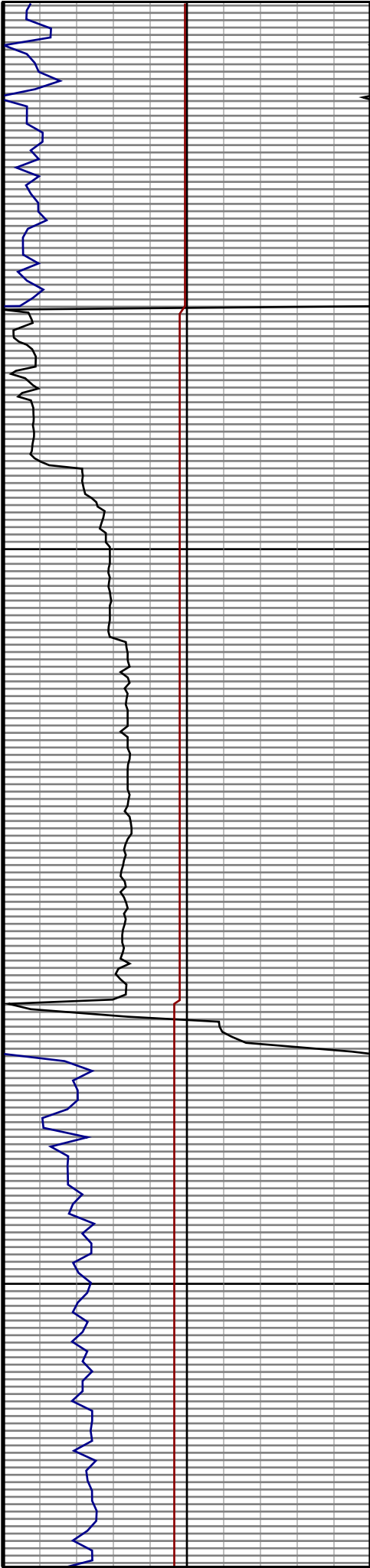
4900

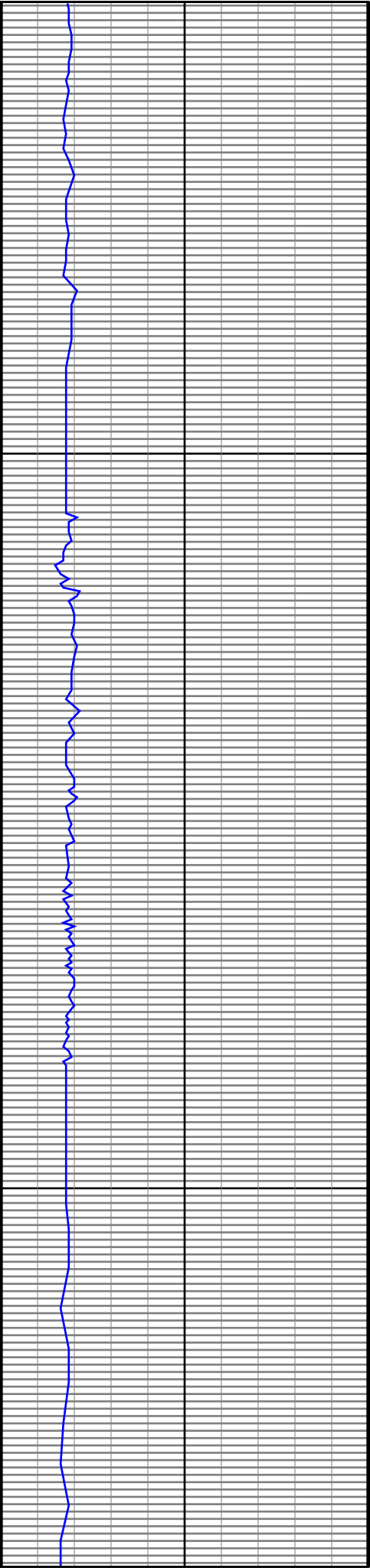




5000

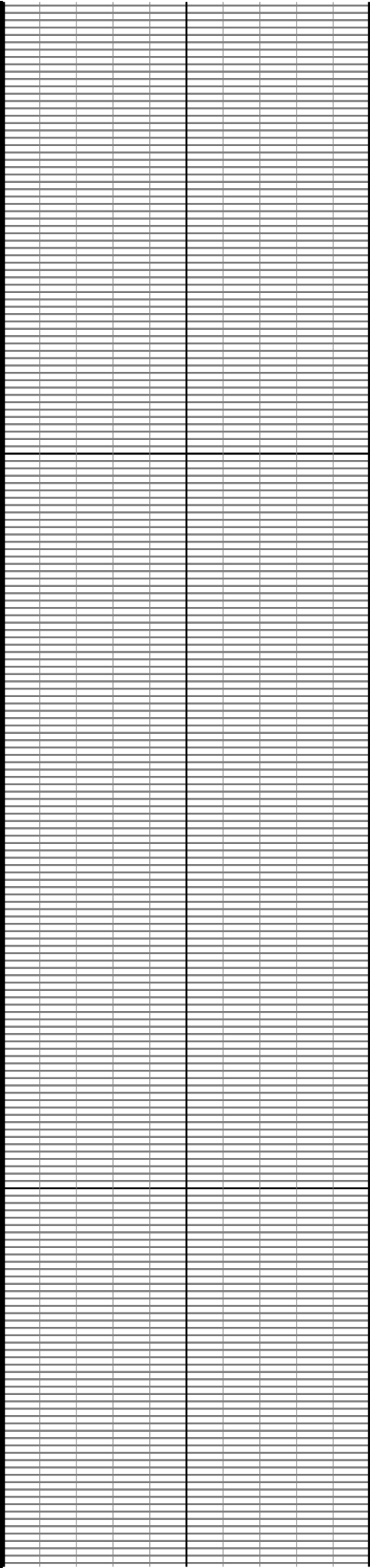
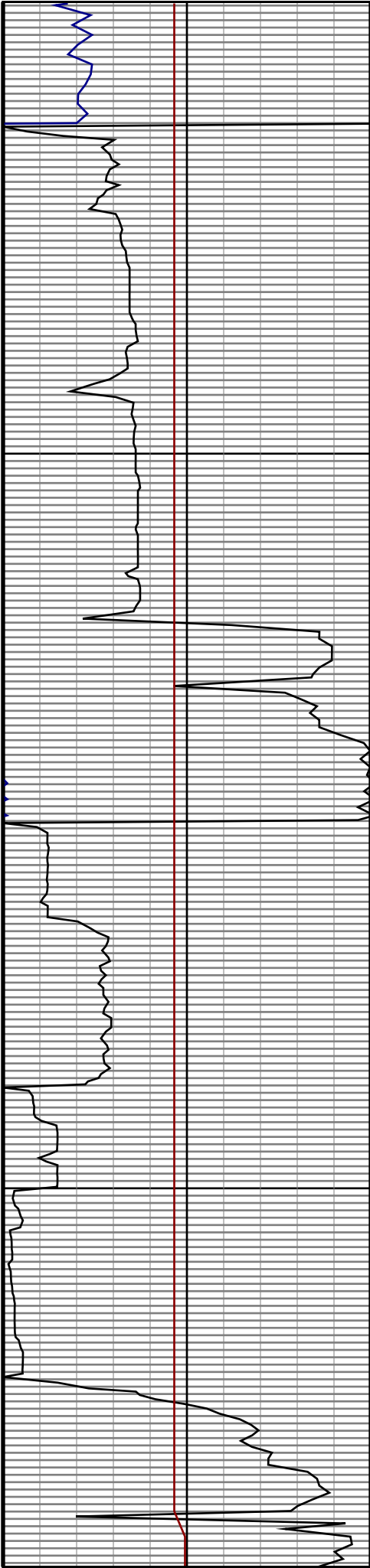
5100

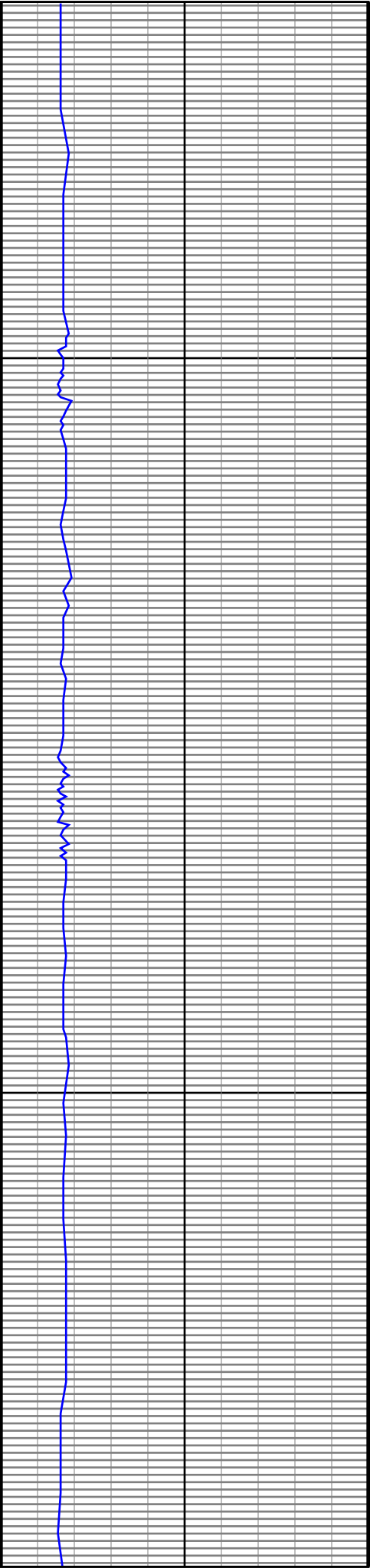




5200

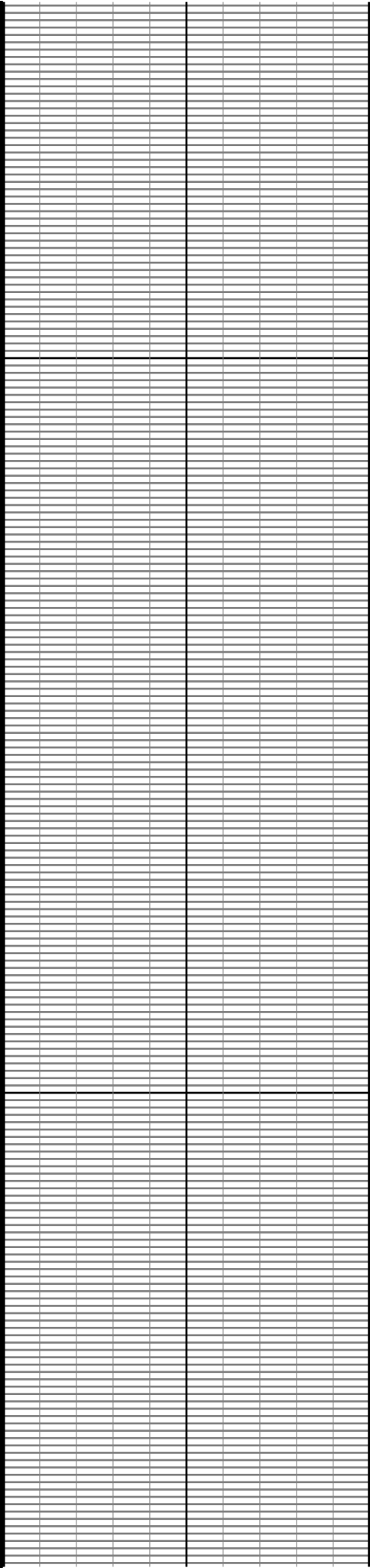
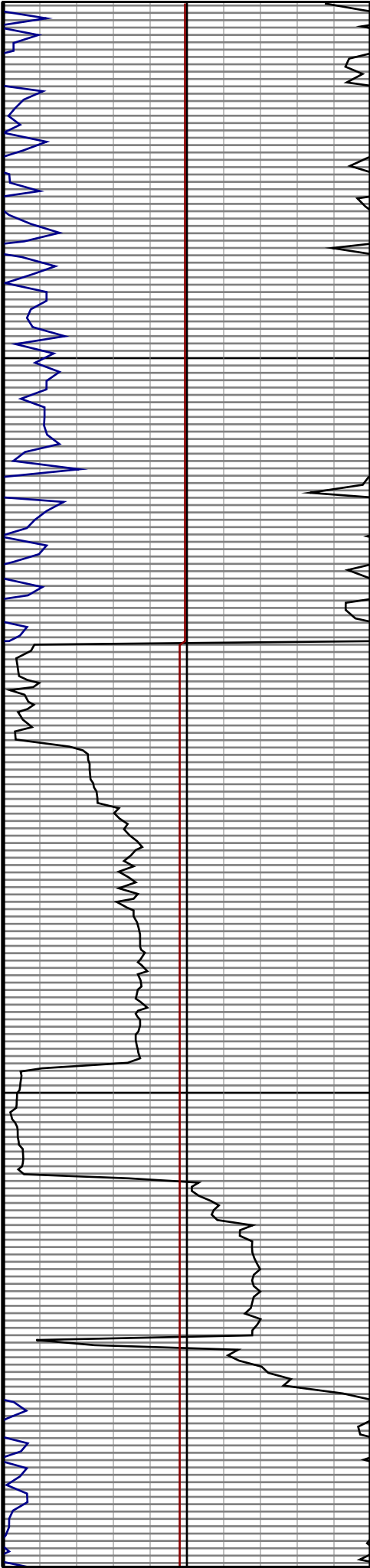
5300

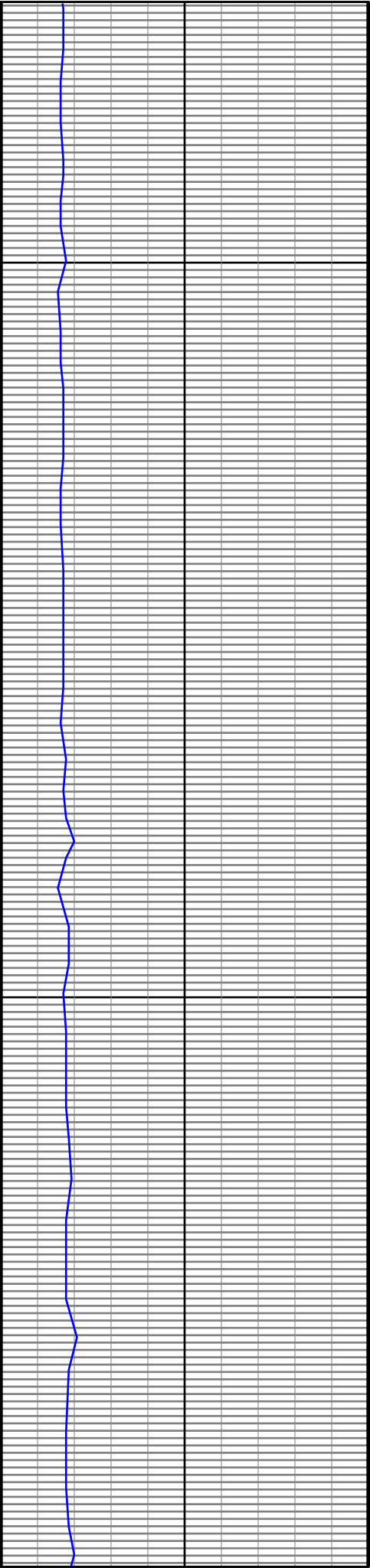




5400

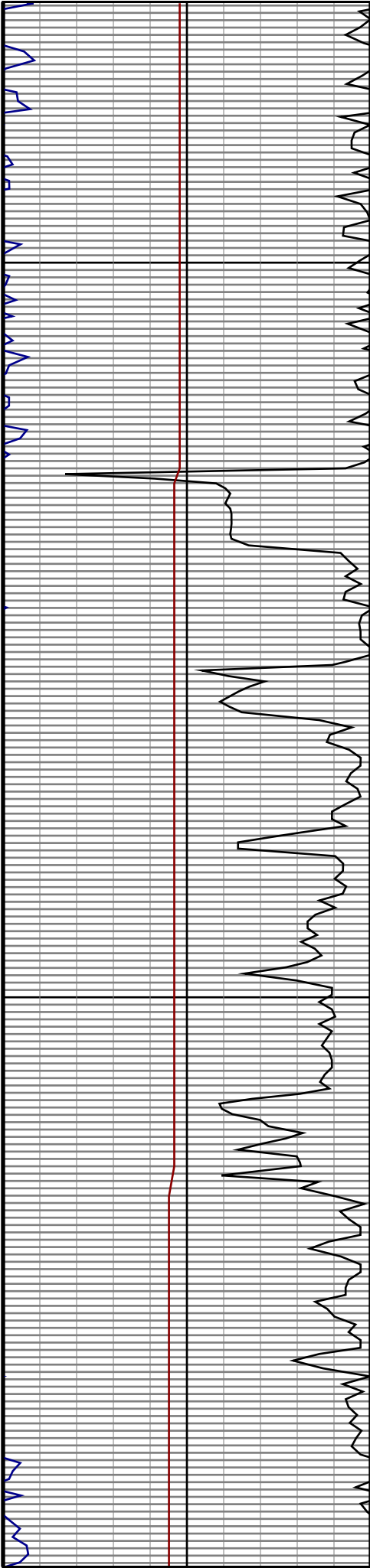
5500

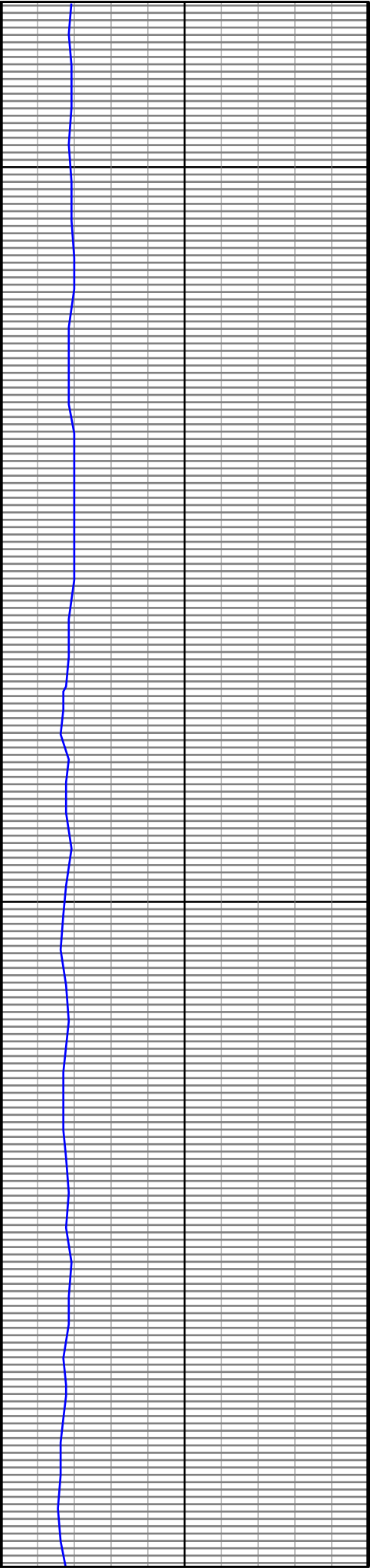




5600

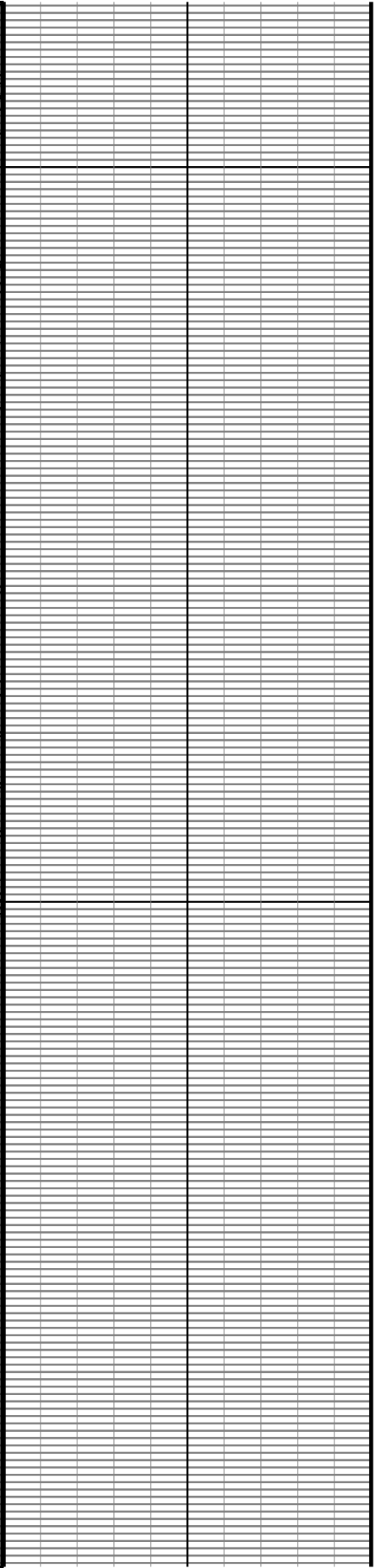
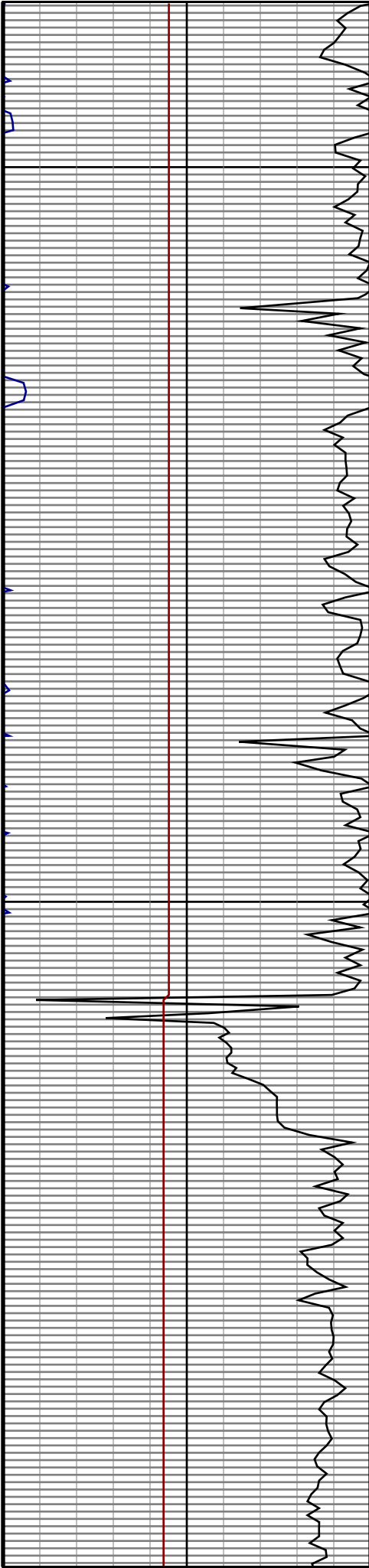
5700

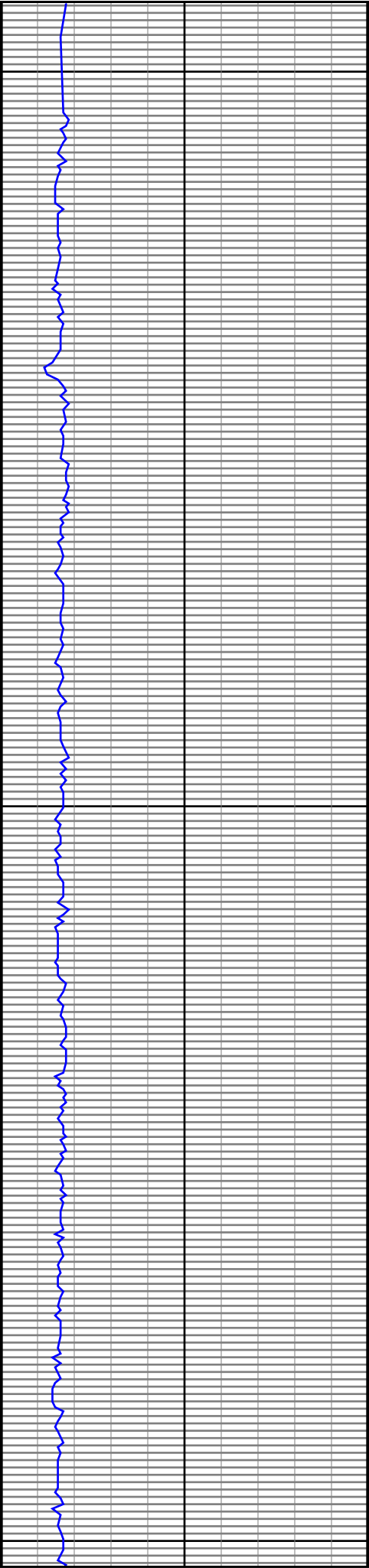




5800

5900

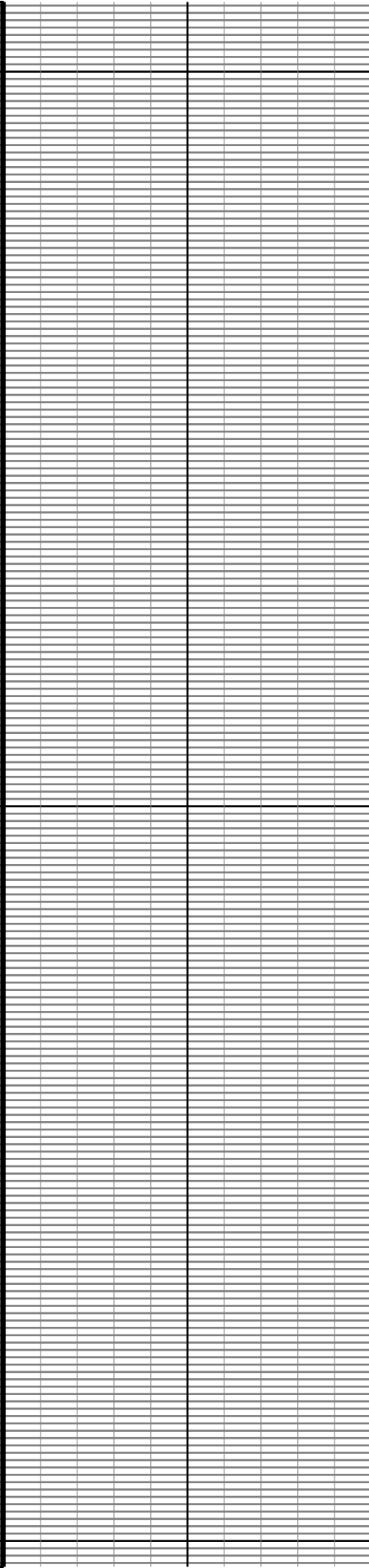


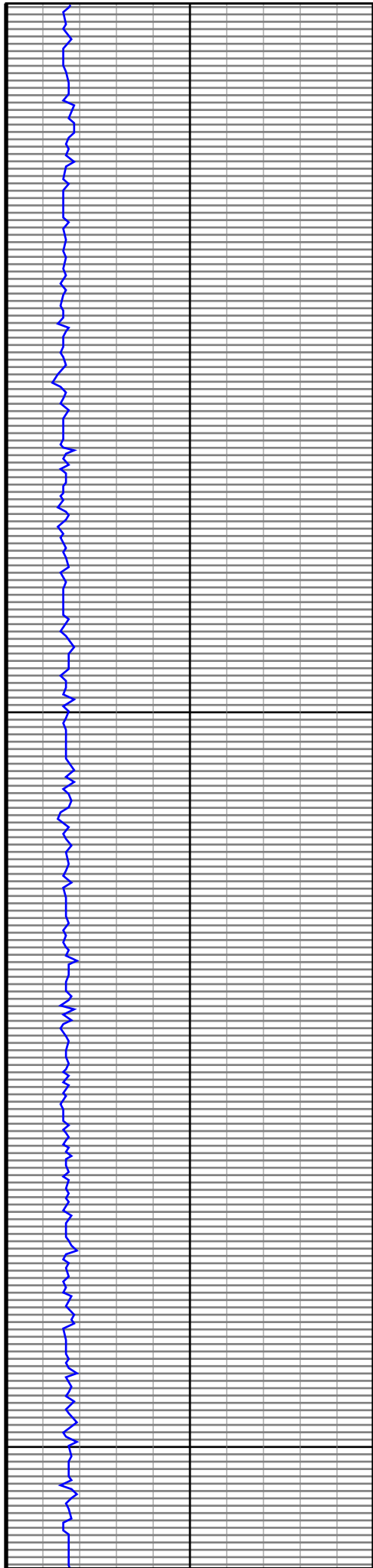


6000

6100

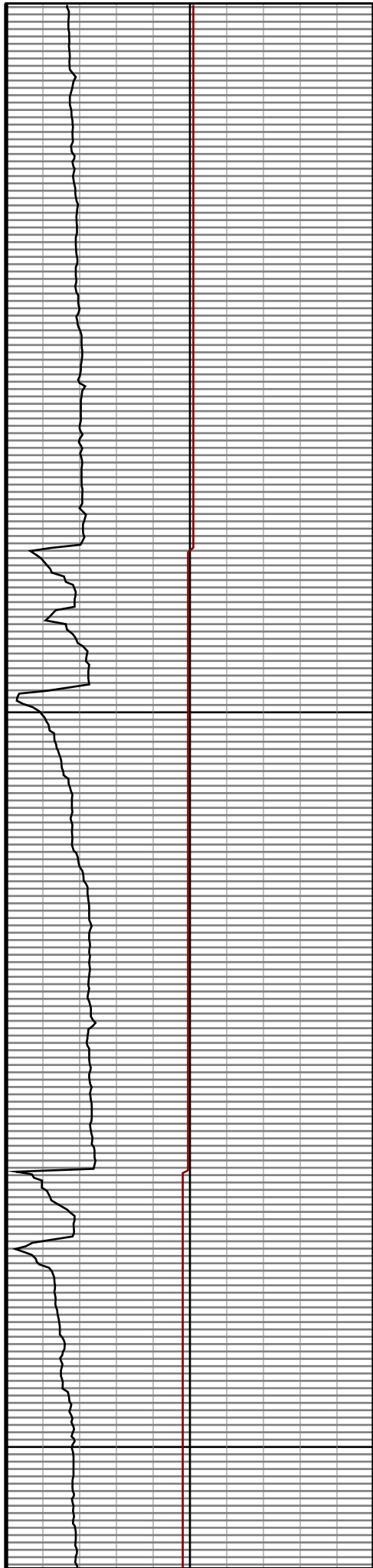
6200

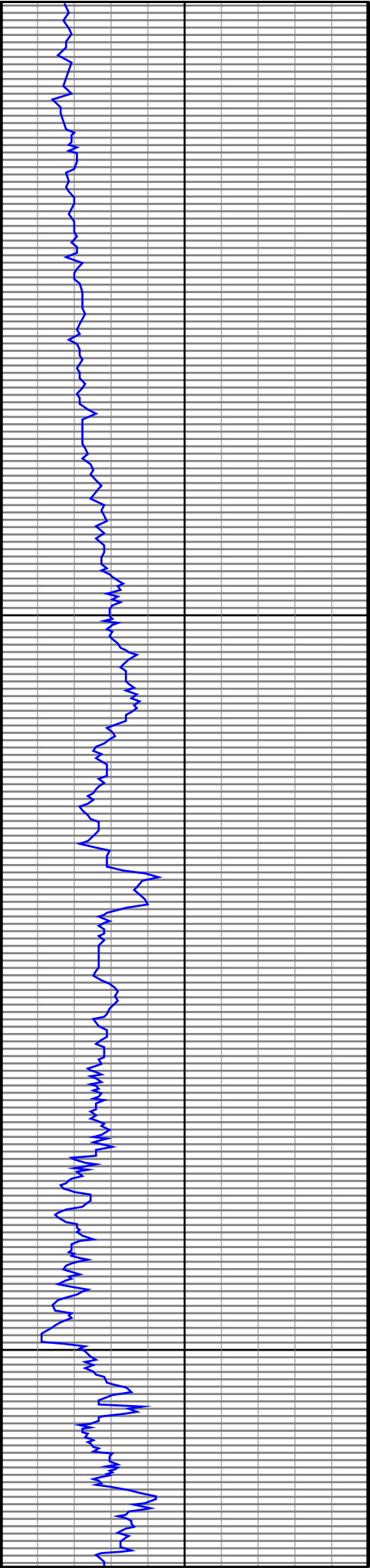




6300

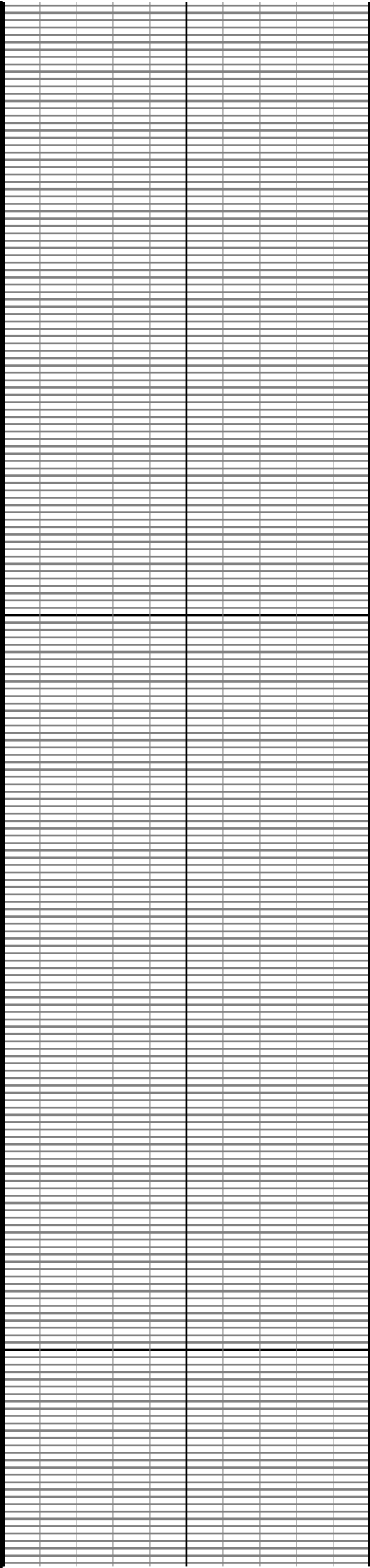
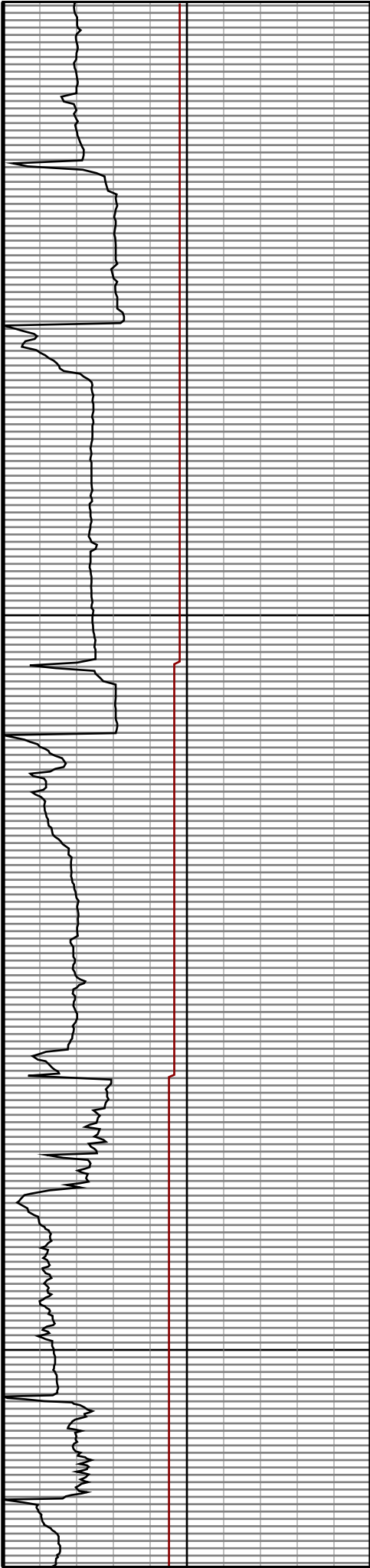
6400

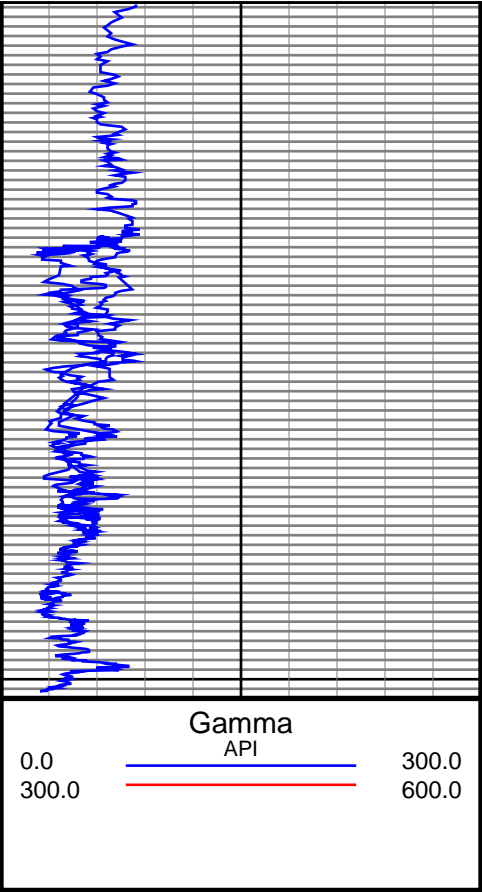




6500

6600





6700

