

12:01 AM
11/10/2013
FT/24 HRS 0
DAY 02

MD 2522 TVD 2520.26
INC 4.6 AZ 117.9
VS -24.14

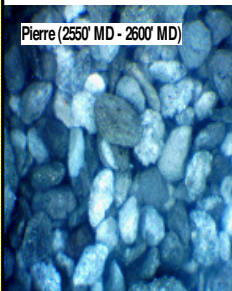
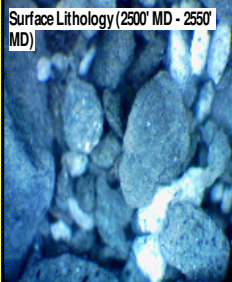
WOB 11.5K
PP 2397
RPM 0
SPM 68/68

ROP (ft/Hr)
Gamma (API)

2000
160

MD 2617 TVD 2614.82
INC 6.5 AZ 109.3
VS -26.44

2500
2550
2600
2650
2700



ON 11/10/2013 W/BIT # 2, 8.75",
SMITH/MDIZ516, (S/N) JH0527 IN @
641' MD

2500'- 2550': SLTST: 70% LTGY
-MEDLTGY, FRI, FN TO MED GRN,
WSRTD, CALC CMT, IMBD PYR,
SANDY, INTGRPOR, NO STN, NO
FLOR, NO OFLOR, NO CUT, NO
RNG

PIERRE
2557' MD 2555' TVD

2550'- 2600': SS: 60% LTGY
-MEDLTGY, FRI, FN TO MED GRN,
WSRTD, CALC CMT, IMBD PYR,
SILTY, INTGR POR, NO STN, NO
FLOR, NOO FLOR, NO CUT, NO
RNG

2600'- 2700': SLTST: 60% LTGY
-MEDLTGY, FRI, FN TO MED GRN,
WSRTD, CALC CMT, SANDY,
INTGRPOR, NO STN, NO FLOR, NO
OFLOR, NO CUT, NO RNG

DEPTH 641'
WT 8.50
VIS 28
PH 11.6
FIL 39.0
CL 1550
CAL 100
H2O 98.8
OIL 0.0
LGS 5.42
GELS 1/1/2
PV 2
YP 2
CK 1/0
SOL 0.9

CG 37u

TG, C1-C4

CG 33u

MD 2713 TVD 2710.26
INC 5.8 AZ 107.5
VS -28.25

MD 2808 TVD 2804.63
INC 7.4 AZ 100.3
VS -29.23

MD 2903 TVD 2898.68
INC 8.8 AZ 102.4
VS -29.96

ROP (Ft/Hr)
Gamma (API)

2000
160

2750

2800

2850

2900

2700'- 2800': SLTST: 50% LTGY
-MEDLTGY, FRI, FN TO MED GRN,
WSRTD, CALC CMT, SANDY,
INTGRPOR, NO STN, NO FLOR, NO
OFLO, NO CUT, NO RNG

Pierre (2800' MD - 2900' MD)

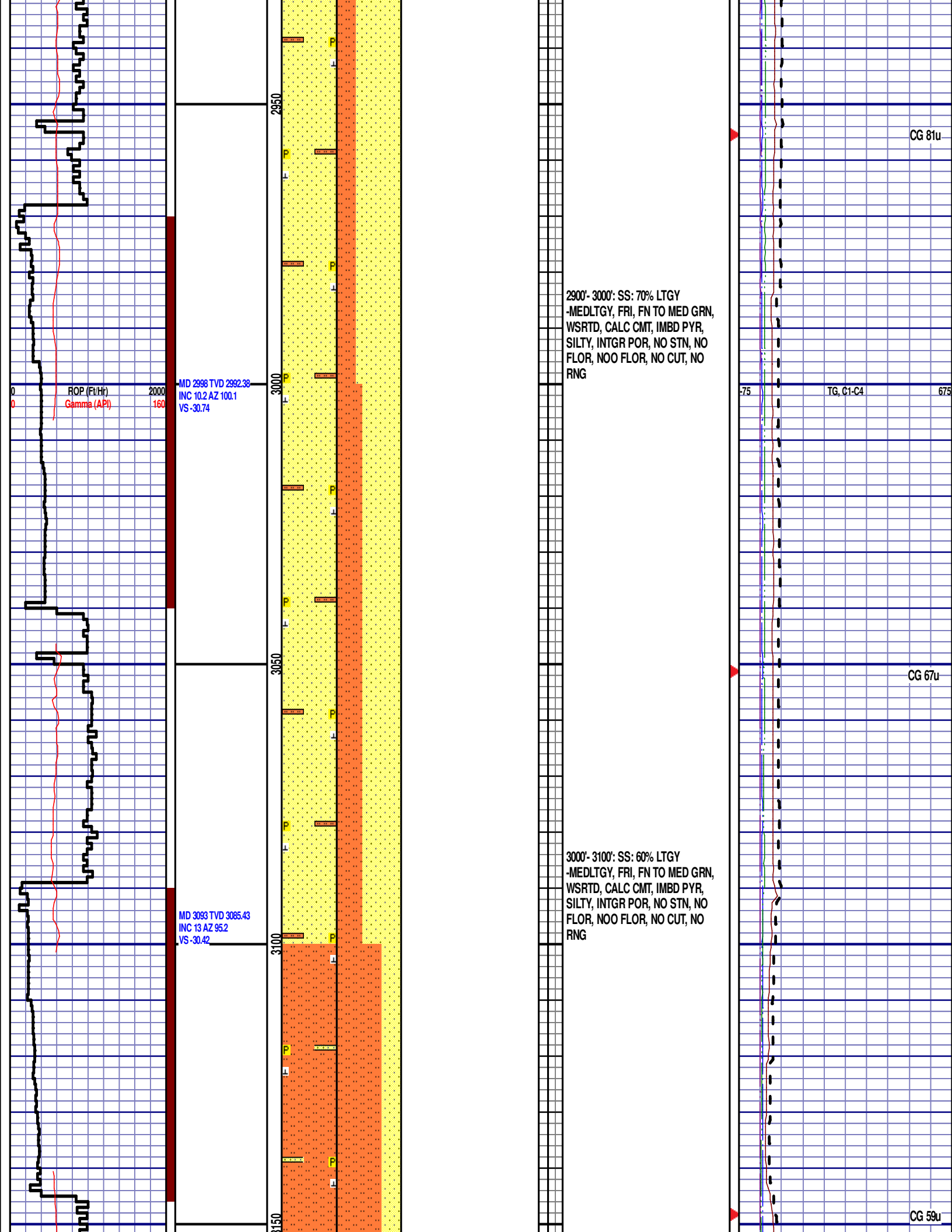


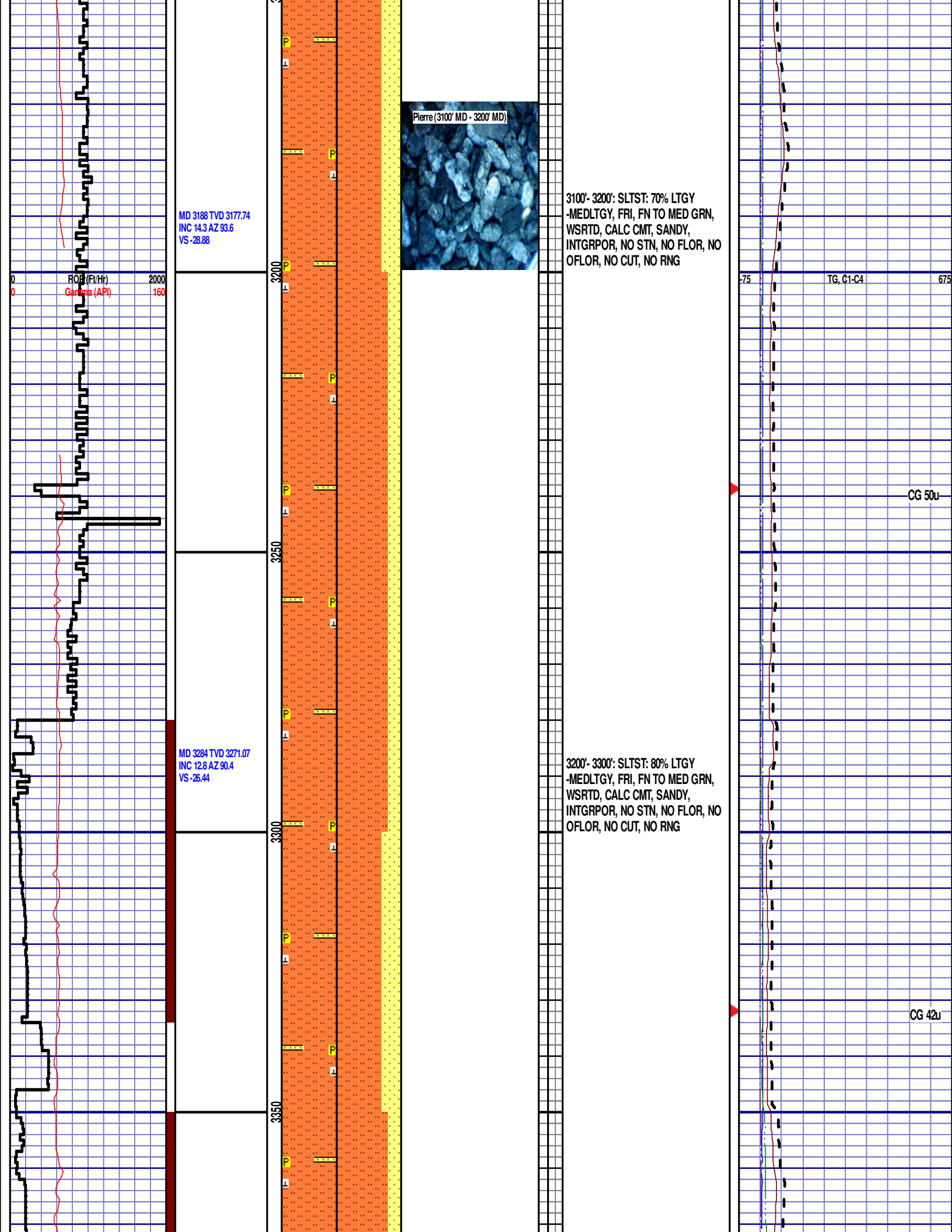
2800'- 2900': SLTST: 50% LTGY
-MEDLTGY, FRI, FN TO MED GRN,
WSRTD, CALC CMT, SANDY,
INTGRPOR, NO STN, NO FLOR, NO
OFLO, NO CUT, NO RNG

CG 32u

TG, C1-C4

CG 77u





MD 3379 TVD 3363.37
INC 14.6 AZ 98.4
VS-25.01

ROP (Ft/Hr)
Gamma (API)

2000
160

3400

3450

3500

3550

MD 3474 TVD 3455.31
INC 14.6 AZ 101.5
VS-25.7

MD 3669 TVD 3547.56
INC 13 AZ 100.1
VS-26.7

3300'- 3400': SLTST: 75% LTGY
-MEDLTGY, FRI, FN TO MED GRN,
WSRTD, CALC CMT, SANDY,
INTGRPOR, NO STN, NO FLOR, NO
OFLO, NO CUT, NO RNG

Pierre (3400' MD - 3500' MD)

3400'- 3500': SLTST: 50% LTGY
-MEDLTGY, FRI, FN TO MED GRN,
WSRTD, CALC CMT, SANDY,
INTGRPOR, NO STN, NO FLOR, NO
OFLO, NO CUT, NO RNG

Pierre (3550' MD- 3600' MD)

3500'- 3550': SH: 55% MEDDRKGY,
FRI, SILTY TXT, IMBD CALC, IMD
PYR, SCAT FREE PYR FREE SILT,
FREE SAND, NO STN, NO FLOR, NO
CUT, NO RNG

3550'- 3600': SH: 55% MEDDRKGY,
FRI, SILTY TXT, IMBD CALC, IMD
PYR, SCAT FREE PYR FREE SILT,
FREE SAND, NO STN, NO FLOR, NO
CUT, NO RNG

75

TG, C1-C4

675

CG 52u

DEPTH 3427

WT 8.80

VIS 30

PH 10.1

FIL 32.0

CL 1600

CAL 80

H2O 97.0

OIL 0.0

LGS 17.86

GELS 2/3/3

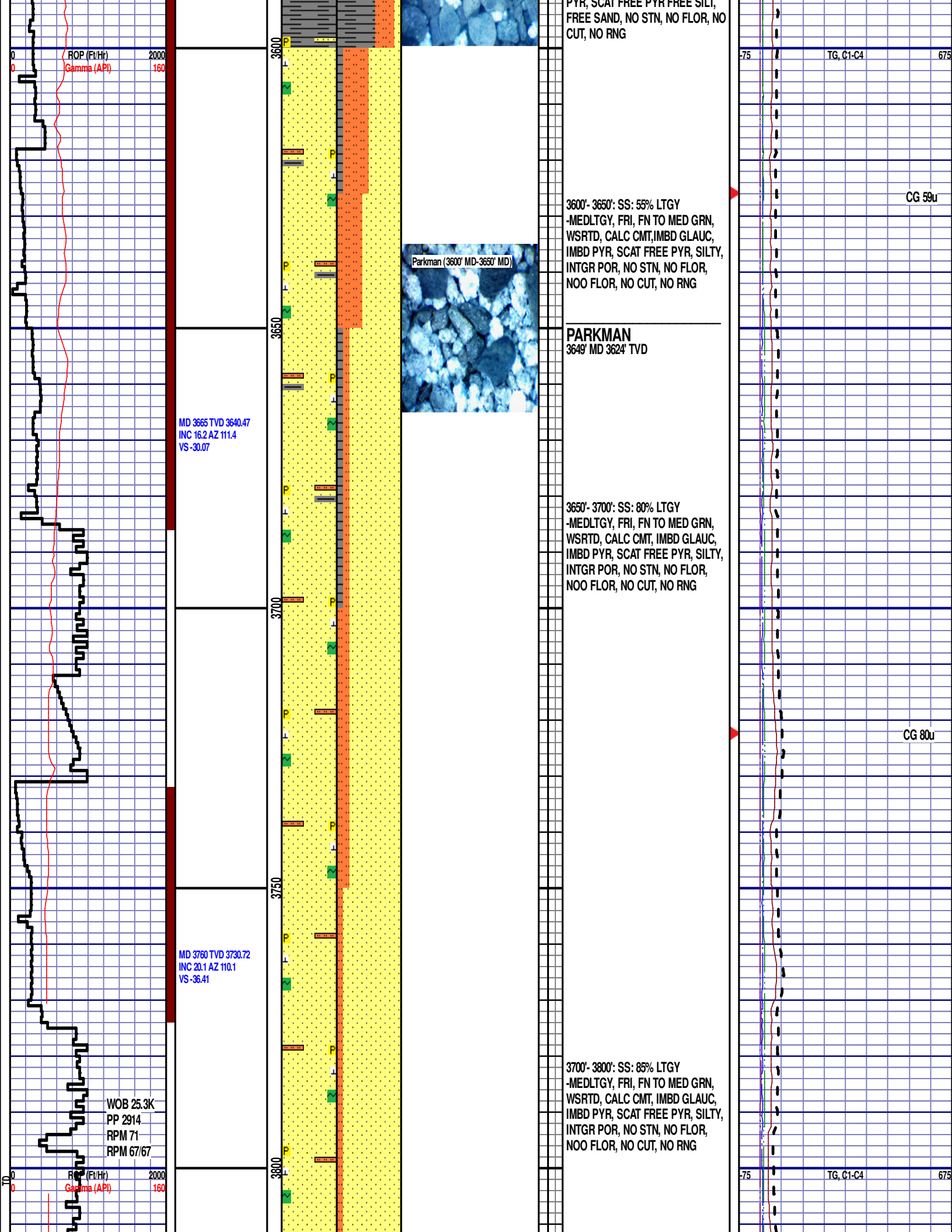
PV 3

YP 4

CK 1/0

SOL 2.7

CG 87u



MD 3855 TVD 3819.11
INC 22.9 AZ 109.4
VS -43.3

Parkman (3800' MD-3900' MD)

3800'- 3900': SS: 90% LTGY
-MEDLTGY, FRI, FN TO MED GRN,
WSRTD, CALC CMT, IMBD GLAUC,
IMBD PYR, SCAT FREE PYR, SILTY,
INTGR POR, NO STN, NO FLOR,
NOO FLOR, NO CUT, NO RNG

MD 3950 TVD 3905.75
INC 25.5 AZ 109.8
VS -50.93

3900'- 4000': SS: 85% LTGY
-MEDLTGY, FRI, FN TO MED GRN,
WSRTD, CALC CMT, IMBD GLAUC,
IMBD PYR, SCAT FREE PYR, SILTY,
INTGR POR, NO STN, NO FLOR,
NOO FLOR, NO CUT, NO RNG

CG 102u

CG 89u

ROP (ft/Hr)
Gamma (API)

2000
160

TG, C1-C4

675

MD 4045 TVD 3992.16
JNC 23.6 AZ 109.8
VS -58.79

MD 4140 TVD 4080.17
JNC 20.6 AZ 105.6
VS -64.7

RO (m/Hr)
Gamma (API)

2000
160

MD 4236 TVD 4170.18
JNC 20.1 AZ 105.7
VS -68.97

4050

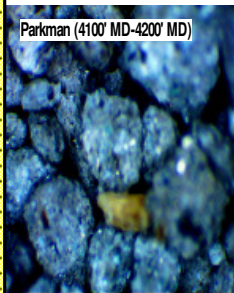
4100

4150

4200

4250

Parkman (4100' MD-4200' MD)



4000'- 4100': SS: 80% LTGY
-MEDLTGY, FRI, FN TO MED GRN,
WSRTD, CALC CMT, IMBD PYR,
SCAT FREE PYR, SILTY, INTGR
POR, NO STN, NO FLOR, NOO
FLOR, NO CUT, NO RNG

CG 72u

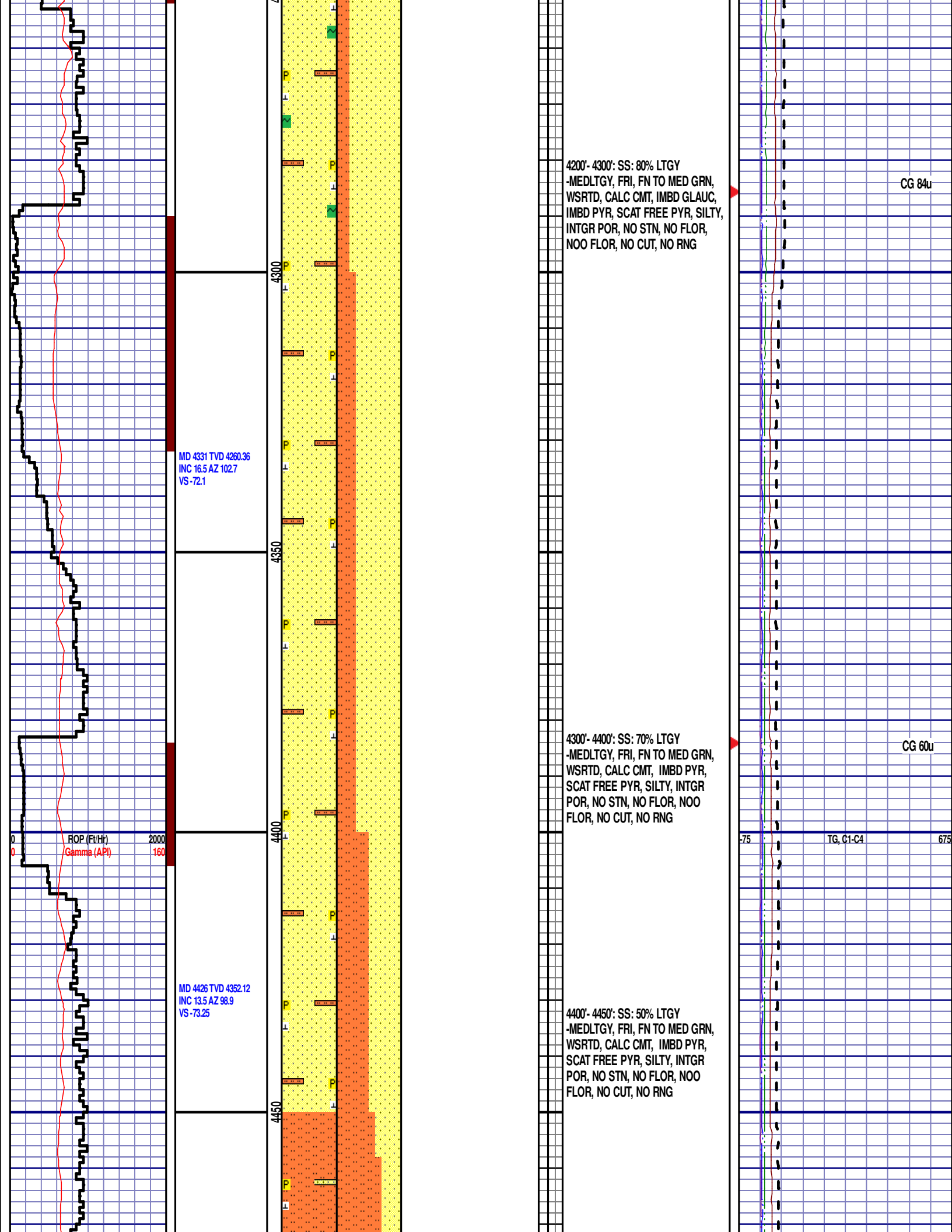
4100'- 4200': SS: 75% LTGY
-MEDLTGY, FRI, FN TO MED GRN,
WSRTD, CALC CMT, IMBD GLAUC,
IMBD PYR, SCAT FREE PYR, SILTY,
INTGR POR, NO STN, NO FLOR,
NOO FLOR, NO CUT, NO RNG

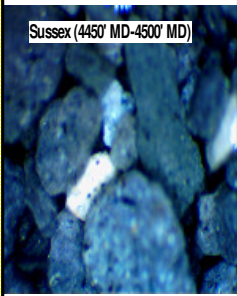
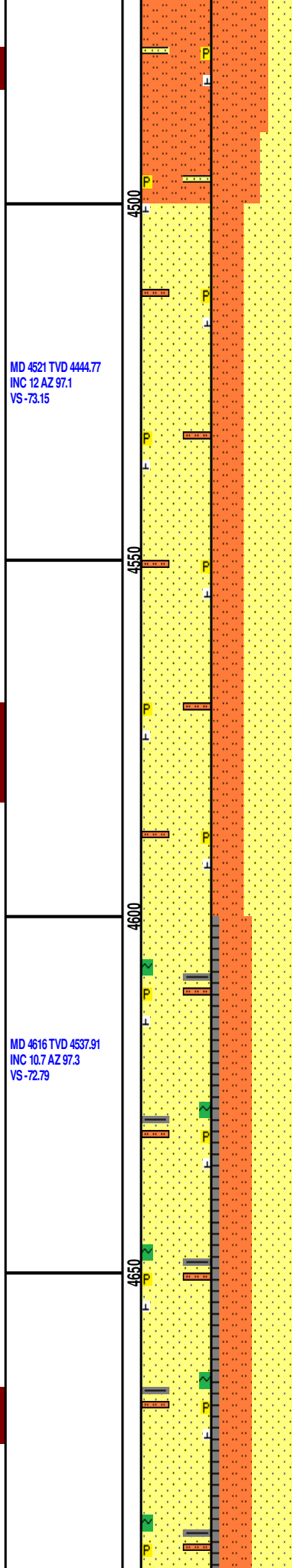
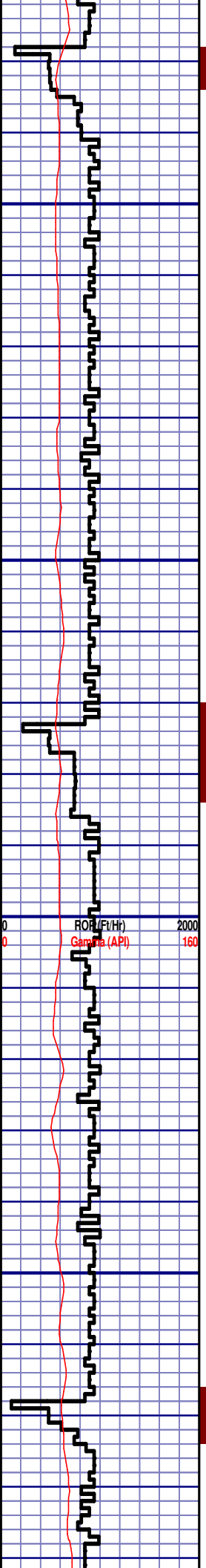
CG 79u

75

TG, C1-C4

675

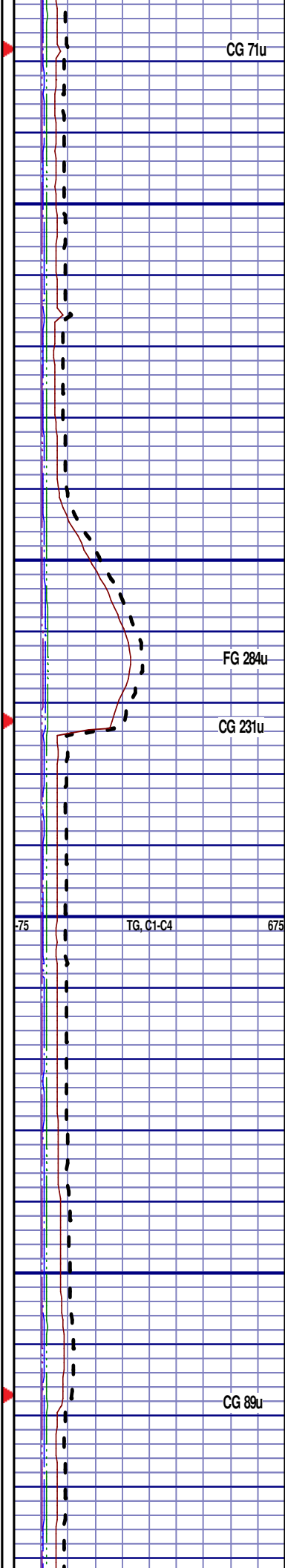


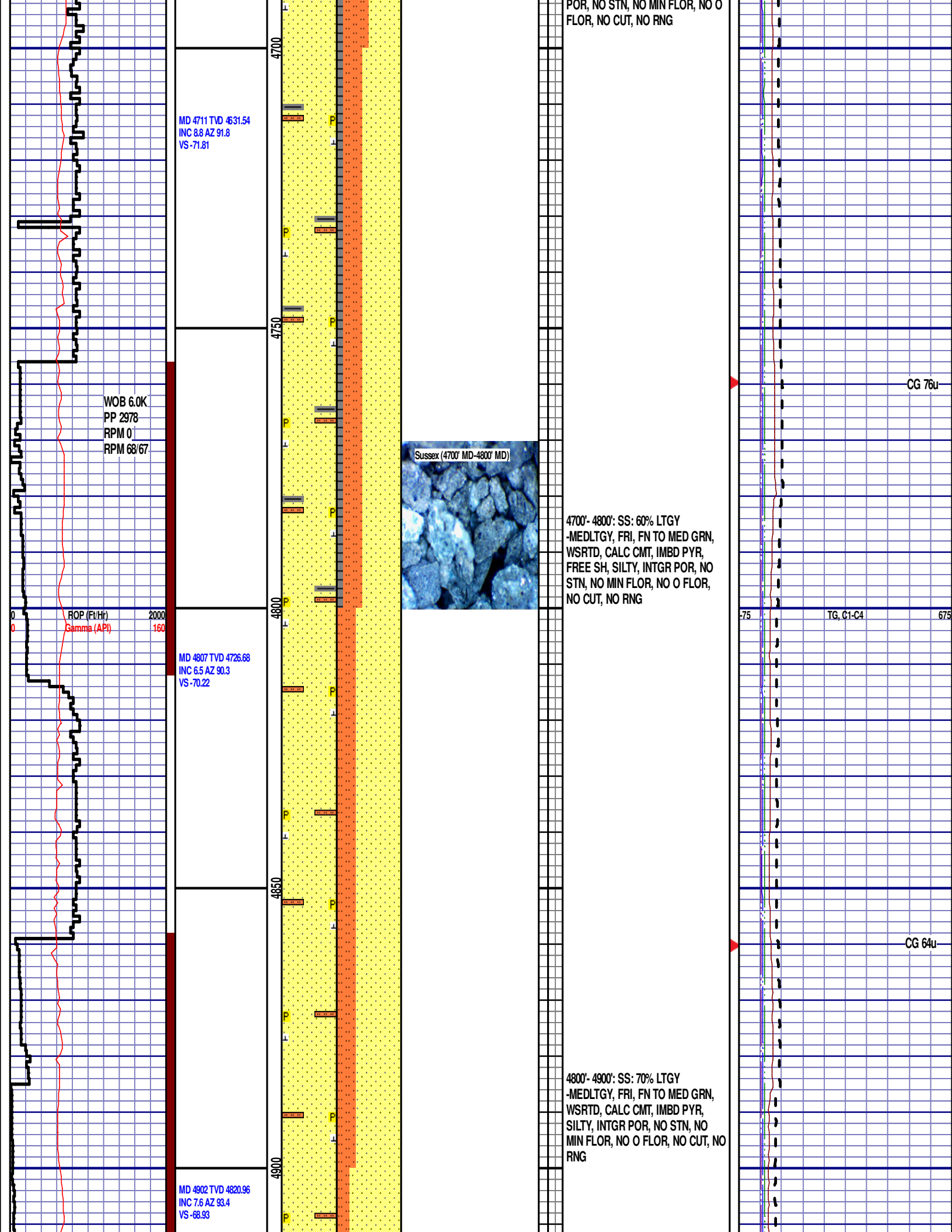


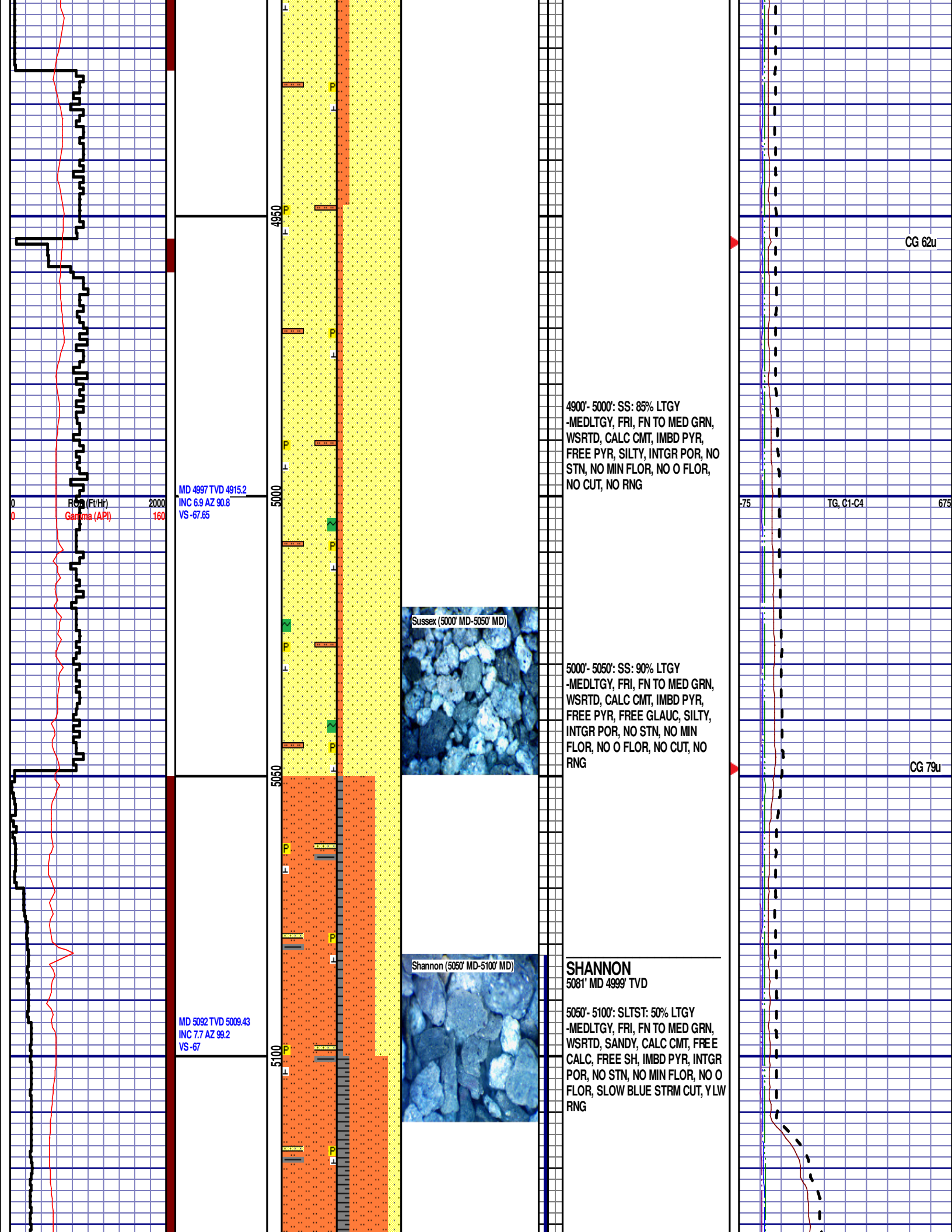
SUSSEX
4475' MD 4400' TVD
4450'- 4500': SLTST: 65% LTGY
-MEDLTGY, FRI, FN TO MED GRN,
WSRTD, SANDY, CALC CMT, IMBD
PYR, INTGR POR, NO STN, NO MIN
FLOR, NO O FLOR, NO CUT, NO
RNG

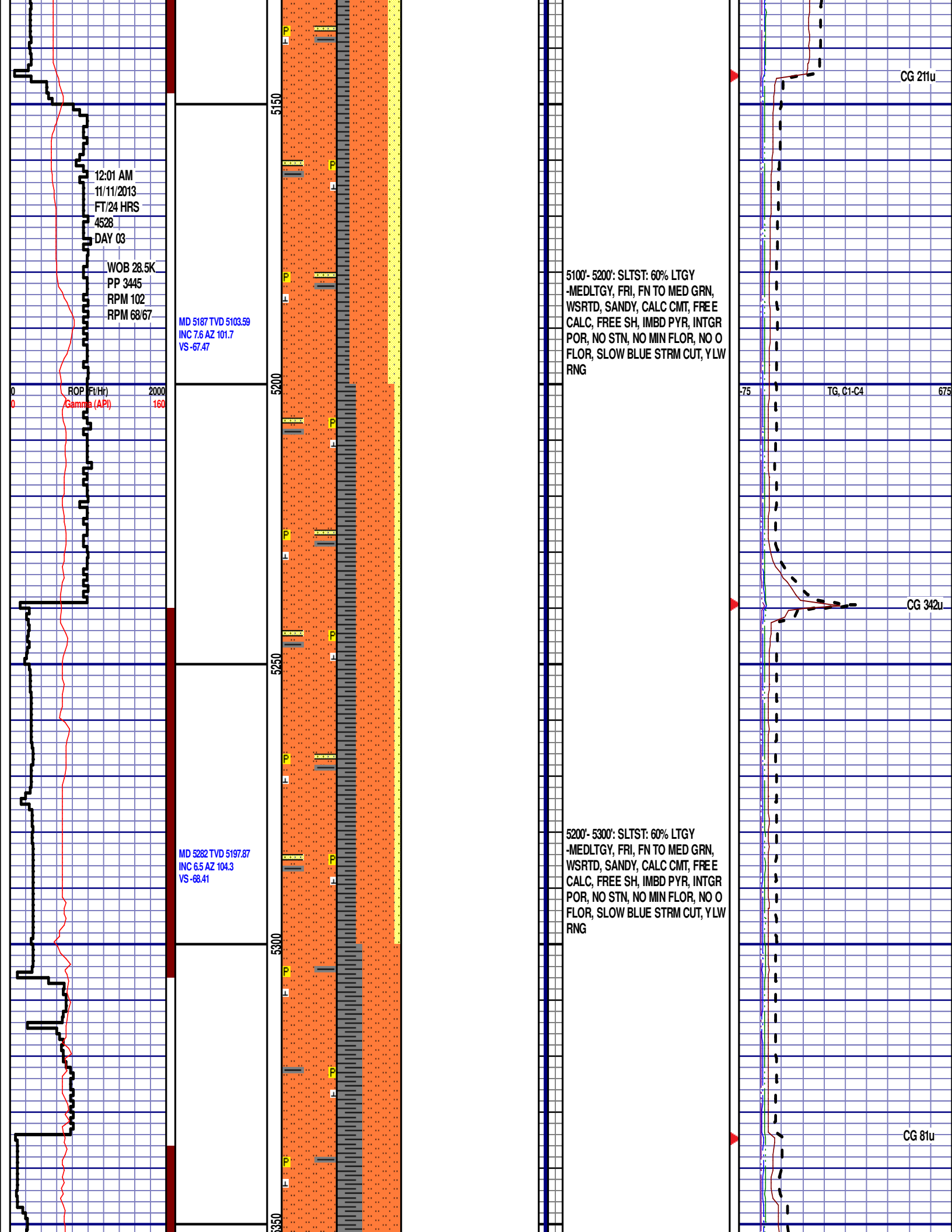
4500'- 4600': SS: 60% LTGY
-MEDLTGY, FRI, FN TO MED GRN,
WSRTD, CALC CMT, IMBD PYR,
SILTY, INTGR POR, NO STN, NO
MIN FLOR, NO O FLOR, NO CUT, NO
RNG

4600'- 4700': SS: 50% LTGY
-MEDLTGY, FRI, FN TO MED GRN,
WSRTD, CALC CMT, IMBD GLAUC,
IMBD PYR, FREE SH, SILTY, INTGR









MD 5378 TVD 5293.37
INC 5.1 AZ 108.9
VS -69.76

ROP (Ft/Hr) 2000
Gamma (API) 160

Shannon (5300' MD-5400' MD)



5300'- 5400': SLTST: 60% LTGY
-MEDLTGY, FRI, FN TO MED GRN,
WSRTD, CALC CMT, FREE CALC,
FREE SH, IMBD PYR, INTGR POR,
NO STN, NO MIN FLOR, NO O
FLOR, SLOW BLUE STRM CUT, YLW
RNG

MD 5473 TVD 5388
INC 5.1 AZ 108.2
VS -71.26

5400

5450

5500

5550

5400'- 5500': SH: 60% MEDDRKGY,
FRI, SILTY TXT, IMBD PYR, IMBD
CALC, FREE SILT, FREE CALC, NO
STN, NO MIN FLOR, NO O FLOR,
BLUE STRM CUT, YLW RNG

75

TG, C1-C4

675

DEPTH 5403'

WT 9.40

VIS 41

PH 8.8

FIL 7.4

CL 1800

CAL 80

H2O 93.8

OIL 0.0

LGS 35.43

GELS 5/6/8

PV 13

YP 15

CK 2/0

SOL 5.9

CG 126u

CG 198u

MD 5568 TVD 5482.68

INC 4.2 AZ 115.8
VS -73.03

ROP (Ft/Hr) 2000
Gamma (API) 160

WOB 29.1K
PP 3572
RPM 96
RPM 68/67

MD 5663 TVD 5577.42
INC 4.4 AZ 118
VS -75.3

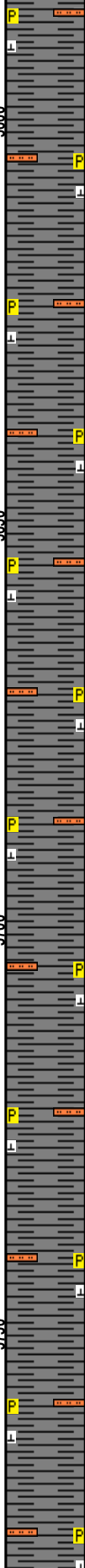
MD 5758 TVD 5672.23
INC 2.8 AZ 119.6
VS -77.37

5600

5650

5700

5750



5500'- 5600': SH: 60% MEDDRKGY,
FRI, SILTY TXT, IMBD PYR, IMBD
CALC, FREE SILT, FREE CALC, NO
STN, NO MIN FLOR, NO O FLOR,
BLUE STRM CUT, YLW RNG

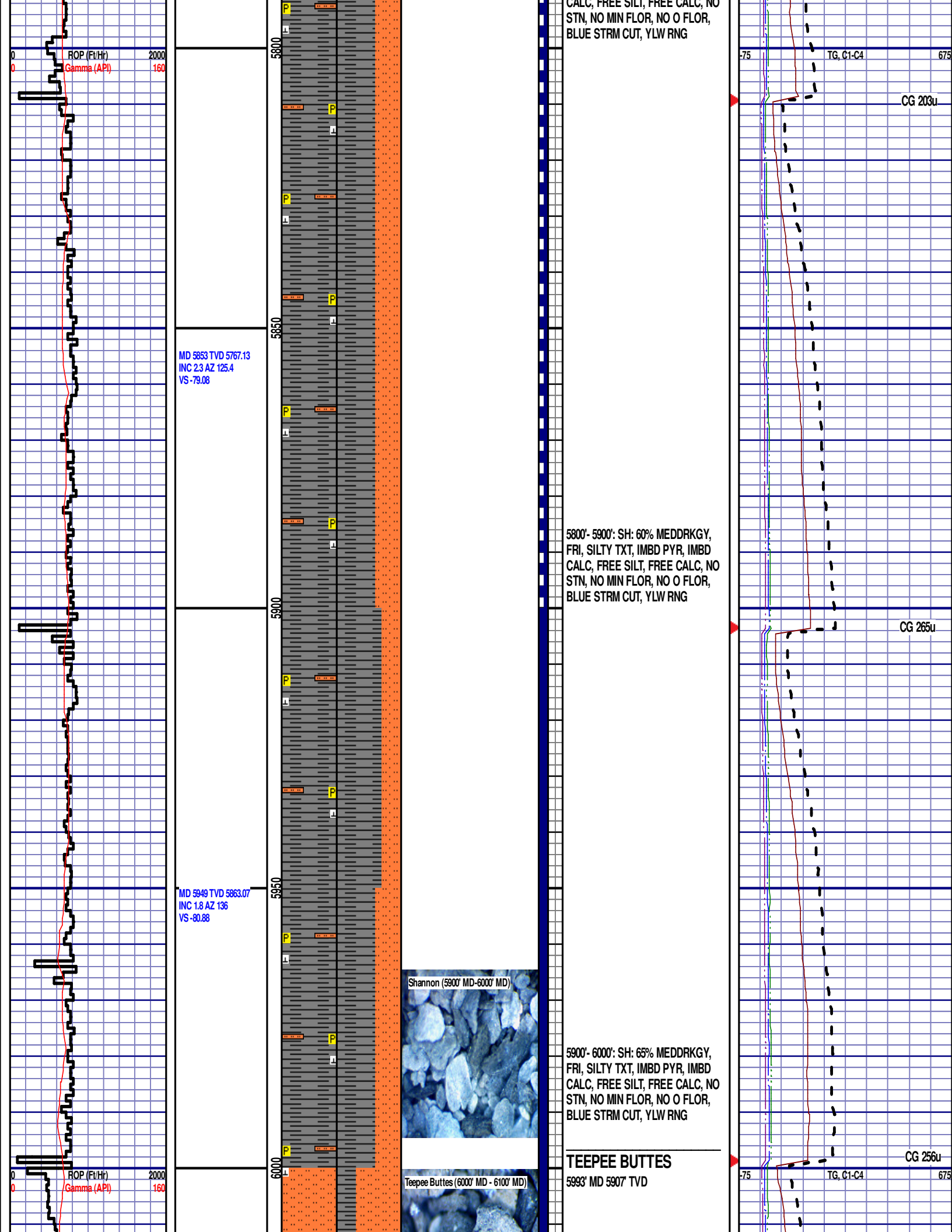
5600'- 5700': SH: 70% MEDDRKGY,
FRI, SILTY TXT, IMBD PYR, IMBD
CALC, FREE SILT, FREE CALC, NO
STN, NO MIN FLOR, NO O FLOR,
BLUE STRM CUT, YLW RNG

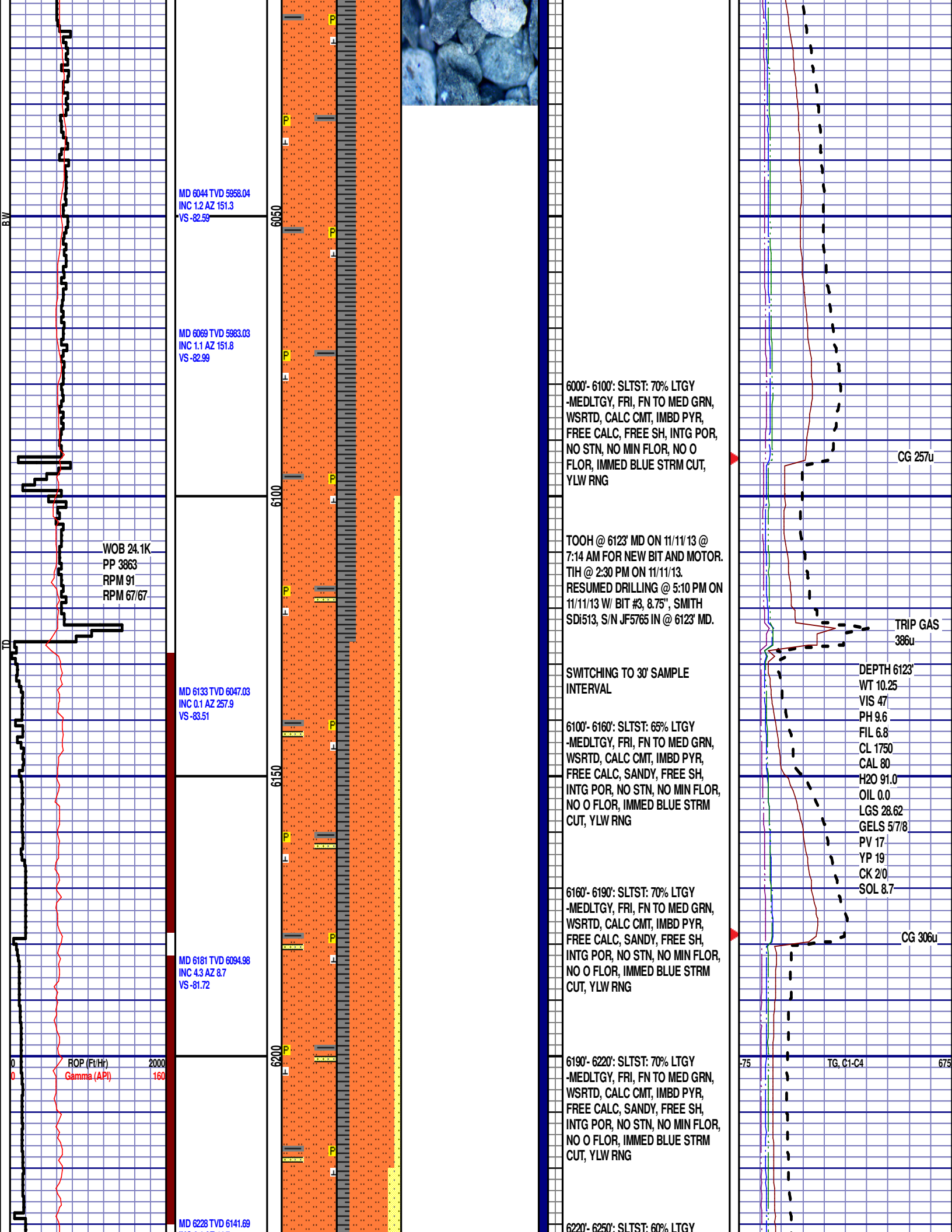
5700'- 5800': SH: 65% MEDDRKGY,
FRI, SILTY TXT, IMBD PYR, IMBD
CALC, FREE SILT, FREE CALC, NO
STN, NO MIN FLOR, NO O FLOR,
BLUE STRM CUT, YLW RNG

75 TG, C1-C4 675

CG 146u

CG 206u





INC 8.4 AZ 14.7
VS -76.54

MD 6324 TVD 6235.23
INC 17.1 AZ 7.9
VS -55.42

MD 6419 TVD 6323.31
INC 26.6 AZ 5.8
VS -20.12

ROP (Ft/Hr) 2000
Gamma (API) 160

WOB 31.1K
PP 2715
RPM 0
RPM 113/0

6250

6300

6350

6400

6450

Teepee Buttes (6310' MD - 6340' MD)



-MEDLTGY, FRI, FN TO MED GRN,
WSRTD, CALC CMT, IMBD PYR,
FREE CALC, SANDY, FREE SH,
INTG POR, NO STN, NO MIN FLOR,
NO O FLOR, IMMED BLUE STRM
CUT, YLW RNG

6250'- 6280': SLTST: 70% LTGY
-MEDLTGY, FRI, FN TO MED GRN,
WSRTD, CALC CMT, IMBD PYR,
FREE CALC, SANDY, FREE SH,
INTG POR, NO STN, NO MIN FLOR,
NO O FLOR, IMMED BLUE STRM
CUT, YLW RNG

6280'- 6310': SLTST: 65% LTGY
-MEDLTGY, FRI, FN TO MED GRN,
WSRTD, CALC CMT, IMBD PYR,
FREE CALC, SANDY, FREE SH,
INTG POR, NO STN, NO MIN FLOR,
NO O FLOR, IMMED BLUE STRM
CUT, YLW RNG

6310'- 6340': SLTST: 70% LTGY
-MEDLTGY, FRI, FN TO MED GRN,
WSRTD, CALC CMT, IMBD PYR,
FREE CALC, SANDY, FREE SH,
INTG POR, NO STN, NO MIN FLOR,
NO O FLOR, IMMED BLUE STRM
CUT, YLW RNG

6340'- 6370': SLTST: 80% LTGY
-MEDLTGY, FRI, FN TO MED GRN,
WSRTD, CALC CMT, IMBD PYR,
FREE CALC, SANDY, FREE SH,
INTG POR, NO STN, NO MIN FLOR,
NO O FLOR, IMMED BLUE STRM
CUT, YLW RNG

6370'- 6400': SLTST: 80% LTGY
-MEDLTGY, FRI, FN TO MED GRN,
WSRTD, CALC CMT, IMBD PYR,
FREE CALC, SANDY, FREE SH,
INTG POR, NO STN, NO MIN FLOR,
NO O FLOR, IMMED BLUE STRM
CUT, YLW RNG

6400'- 6430': SLTST: 70% LTGY
-MEDLTGY, FRI, FN TO MED GRN,
WSRTD, CALC CMT, IMBD PYR,
FREE CALC, SANDY, FREE SH,
INTG POR, NO STN, NO MIN FLOR,
NO O FLOR, IMMED BLUE STRM
CUT, YLW RNG

6430'- 6460': SLTST: 70% LTGY
-MEDLTGY, FRI, FN TO MED GRN,
WSRTD, CALC CMT, IMBD PYR,
FREE CALC, SANDY, FREE SH,

CG 114u

CG 165u

75 TG, C1-C4 675

