



Precision Drilling
27610 Commerce Oaks Drive
Oak Ridge North, TX 77385

70 Ranch 04-63-04-4856 CDH

Scale 5":100' - TVD

12/25/2013 3:24 AM

Oper. Company: Bill Barrett Corporation
Well: 70 Ranch 04-63-04-4856 CDH
Field: Wattenberg
Rig: Nabors M37
Well ID: 05-123-37994
Job Number: DL2055
Notes:

State: Colorado
County: Weld
Country: USA
Start Date: 12/20/2013 02:00:00
End Date: 12/25/2013 02:00:00

Latitude: 40° 20' 21.660" North
Longitude: 104° 25' 58.044" West

Elev KB: 4,582'
Elev DF: 4,582'
Elev GL: 4,559'

Notes:

Operator 1: David Rask
Notes:

Operator 2: Andrew Skoog

Tool Run Data	Run #1	Run #2	Run #3	Run #4	Run #5
Tool S/N	6218	6038	6038		
Bit Size	8 3/4"	8 3/4"	6 1/8"		
Cal Factor	3.50	3.47	1.46		
Gamma Offset	41.00	57.00	69.00		
Resisitivity Offset	48.00	69.00	75.00		
Start Depth	832.00	5604.00	6754.00		
StartDate	12/19/2013	12/20/2013	12/23/2013		
StartTime	10:00 AM	11:30 PM	2:30 AM		
EndDepth	5604.00	6754.00	10989.00		
EndDate	12/20/2013	12/22/2013	12/25/2013		
EndTime	10:30 PM	11:00 AM	2:00 AM		
Mud Type	Water Based	Water Based	Water Based		
Mud Weight	8.4	8.4	8.4		
Funnel Viscosity					
Plastic Viscosity					
Yield Point					
Gel Strength					
Solids Content					
Sand Content					
Mud Alkalinity					
Filtrate Alkalinity					
Chlorides					
Mud RM					
Mud RMF					
Mud RMC					
Mud RM at BHT					
Hole Data			Casing Data		
Size	From	To	Size	From	To
13 1/2"	0.00	832.00	9 5/8"	0.00	832.00
8 3/4"	832.00	6754.00	7"	0.00	6734.00
6 1/8"	6754.00	10989.00			

All interpretations are opinions based on inferences from electrical or other measurements and we cannot and do not guarantee the accuracy or correctness of any interpretation, and we shall not except in the case of gross or willful negligence on our part, be liable or responsible for any loss, cost damages or expenses incurred or sustained by anyone resulting from an interpretation made by any of our officers, agents, or employees.

150.00 2 300.00

FT

MD: 4019.00 INC: 10.80 AZ: 204.70 3,990.36

4,000

4,010

4,020

4,030

4,040

4,050

4,060

4,070

4,080

4,090

4,100

4,110

4,120

4,130

4,140

4,150

4,160

4,170

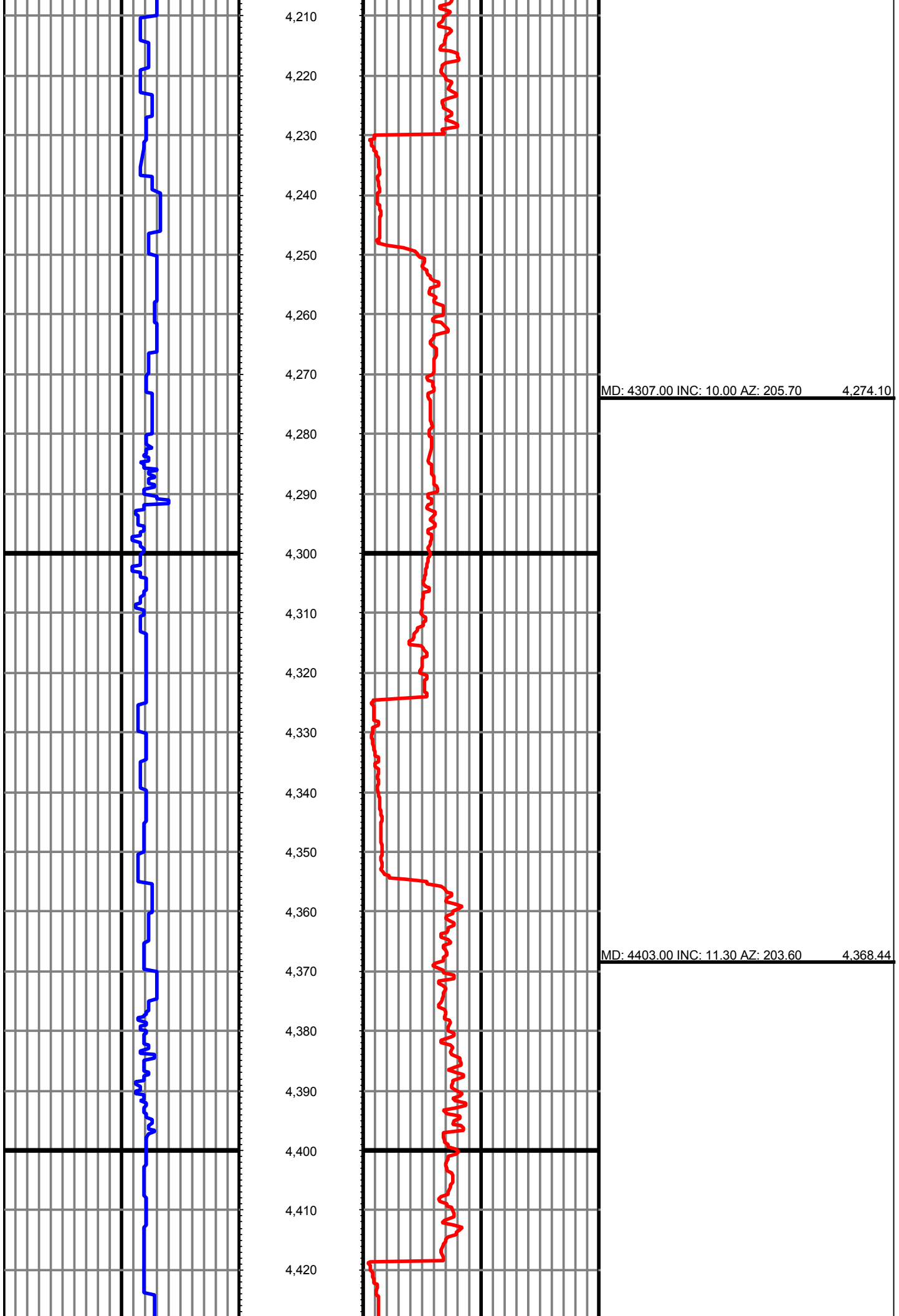
4,180

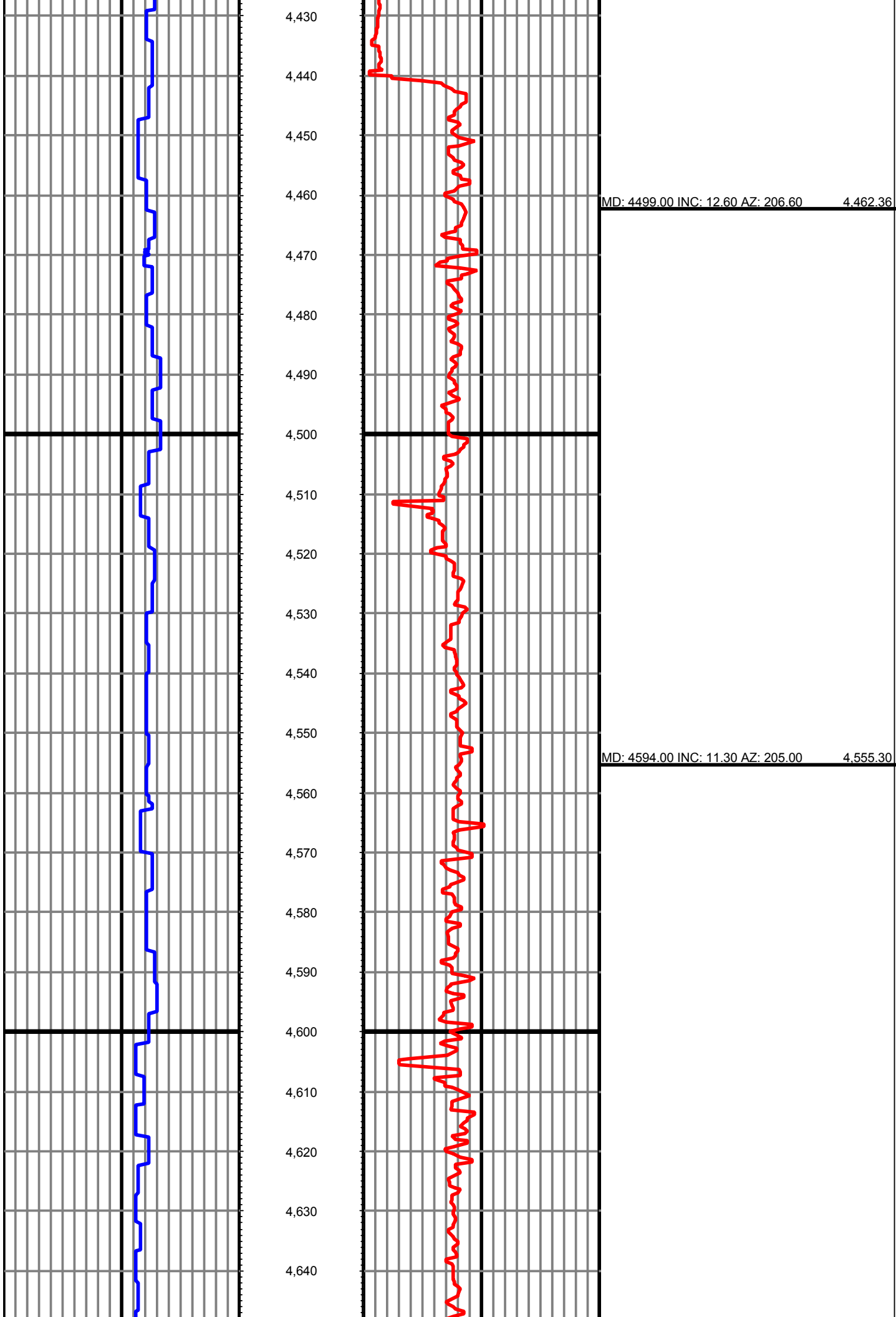
4,190

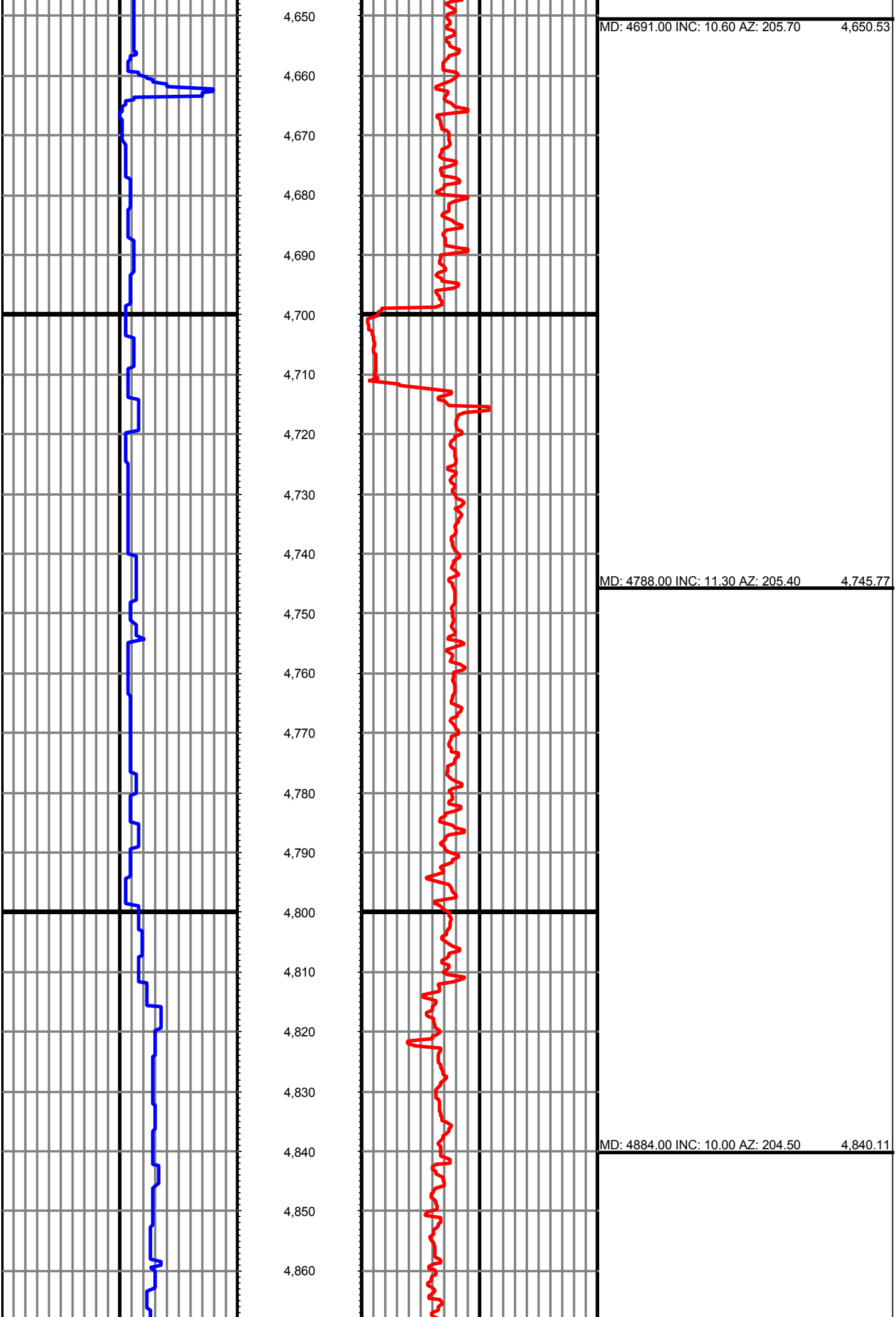
4,200

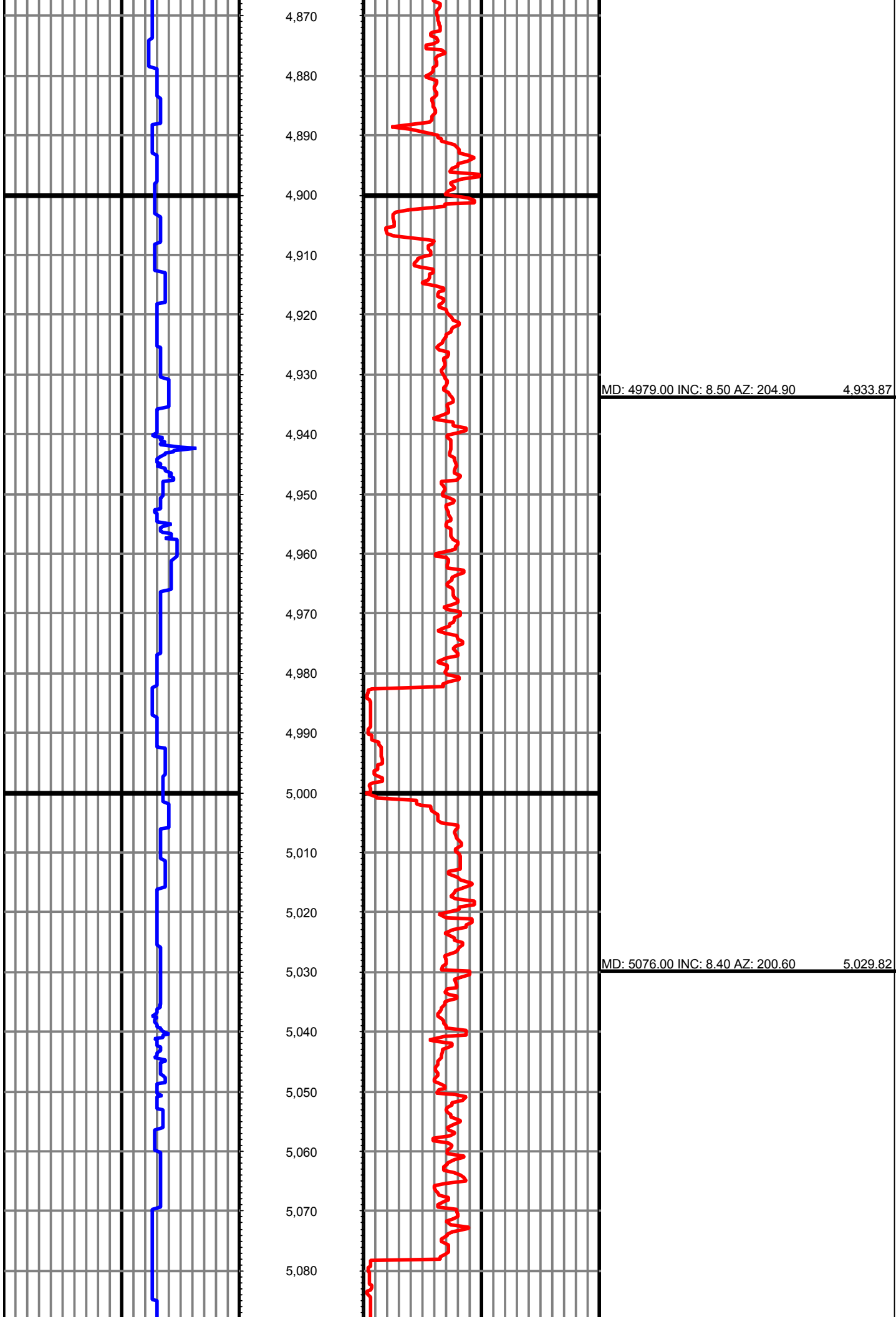
MD: 4115.00 INC: 9.90 AZ: 206.60 4,084.80

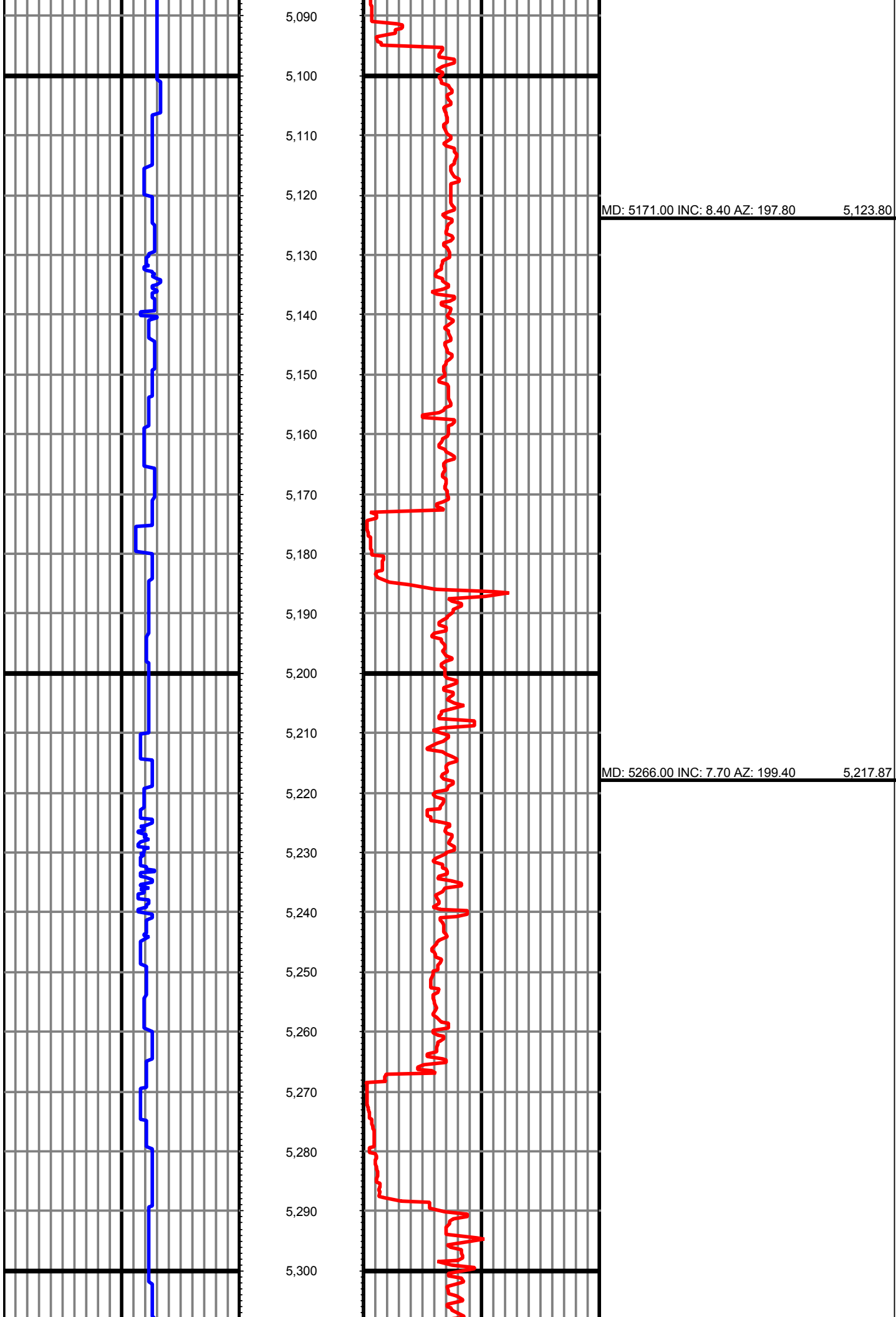
MD: 4211.00 INC: 9.30 AZ: 208.20 4,179.46

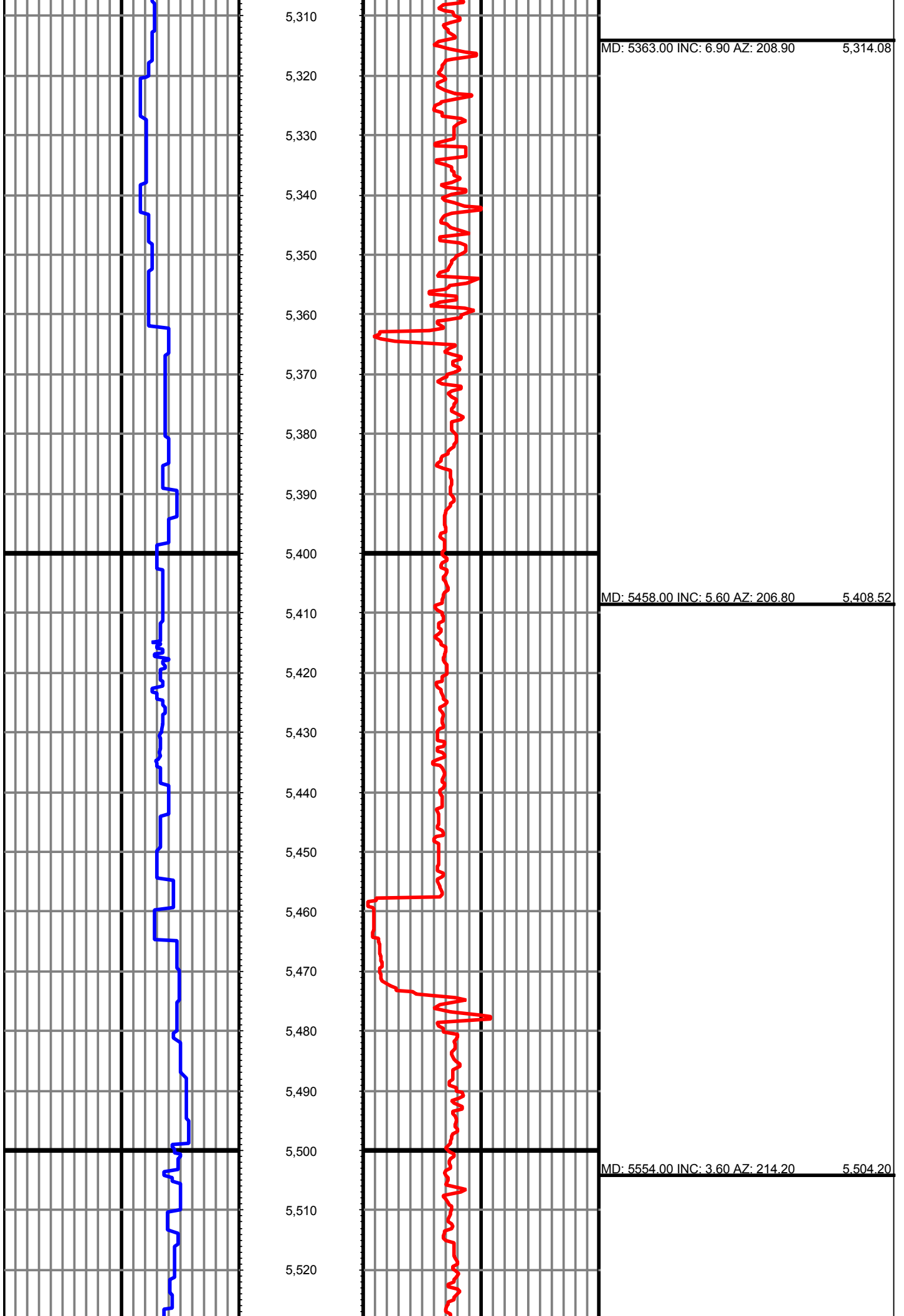


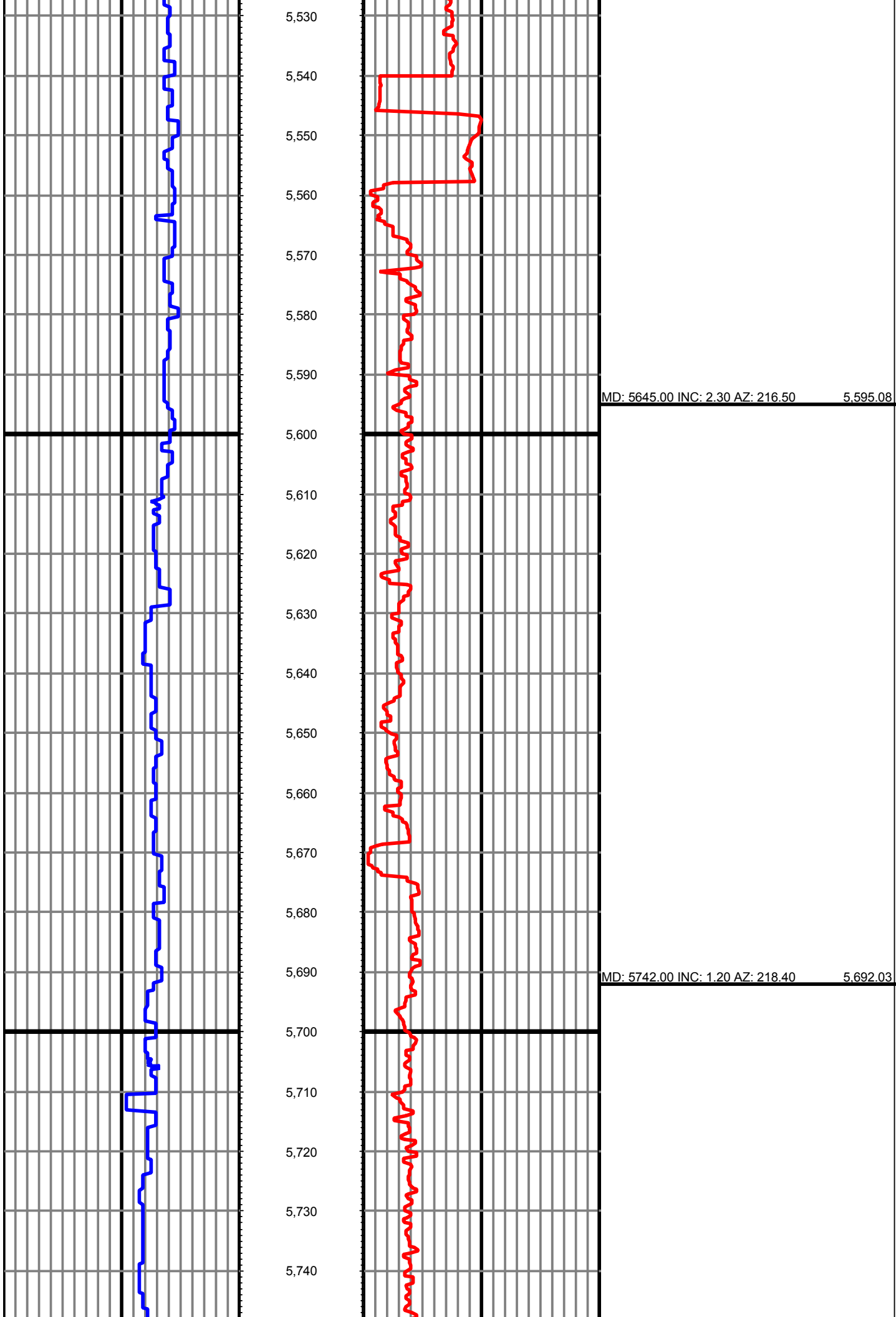


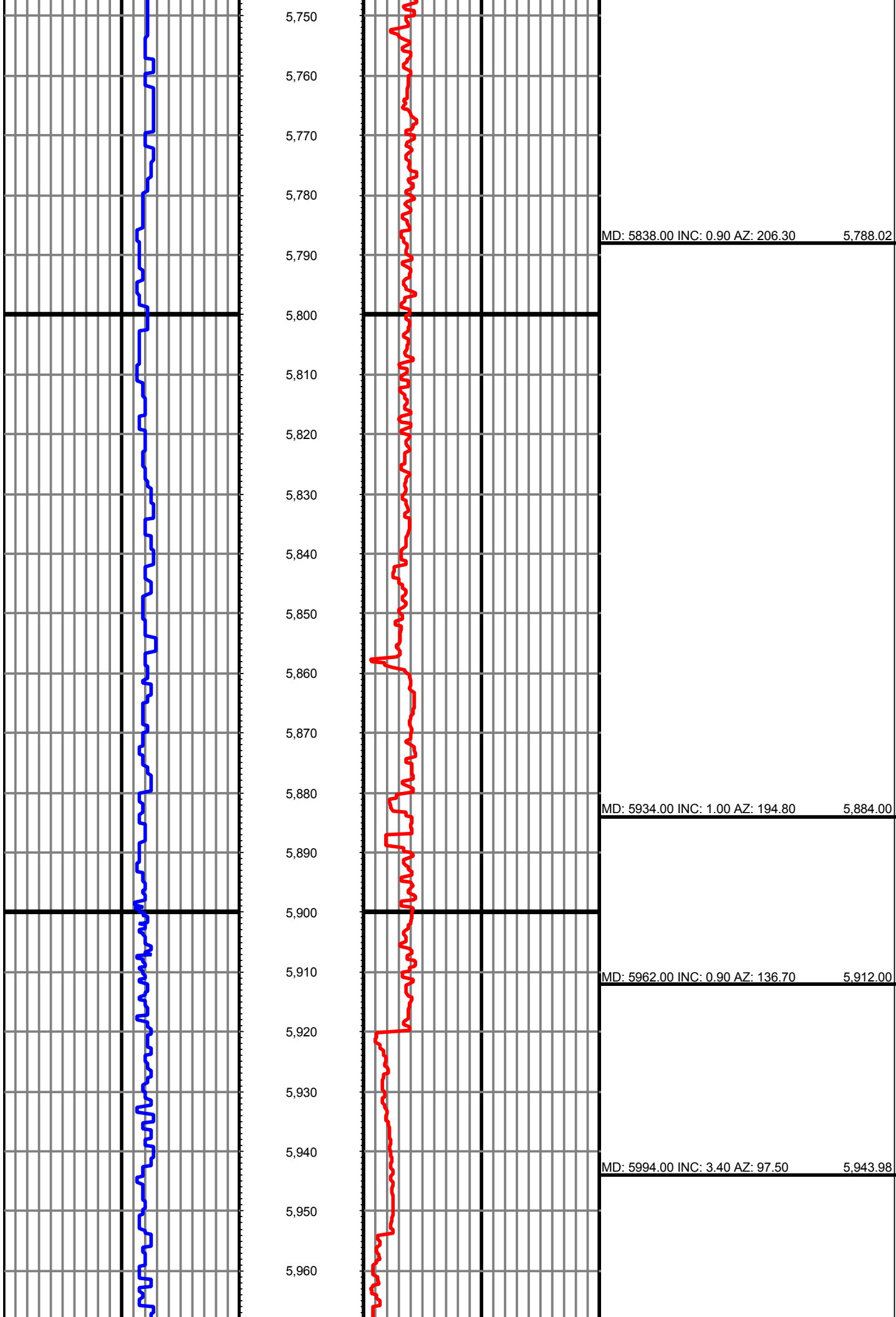


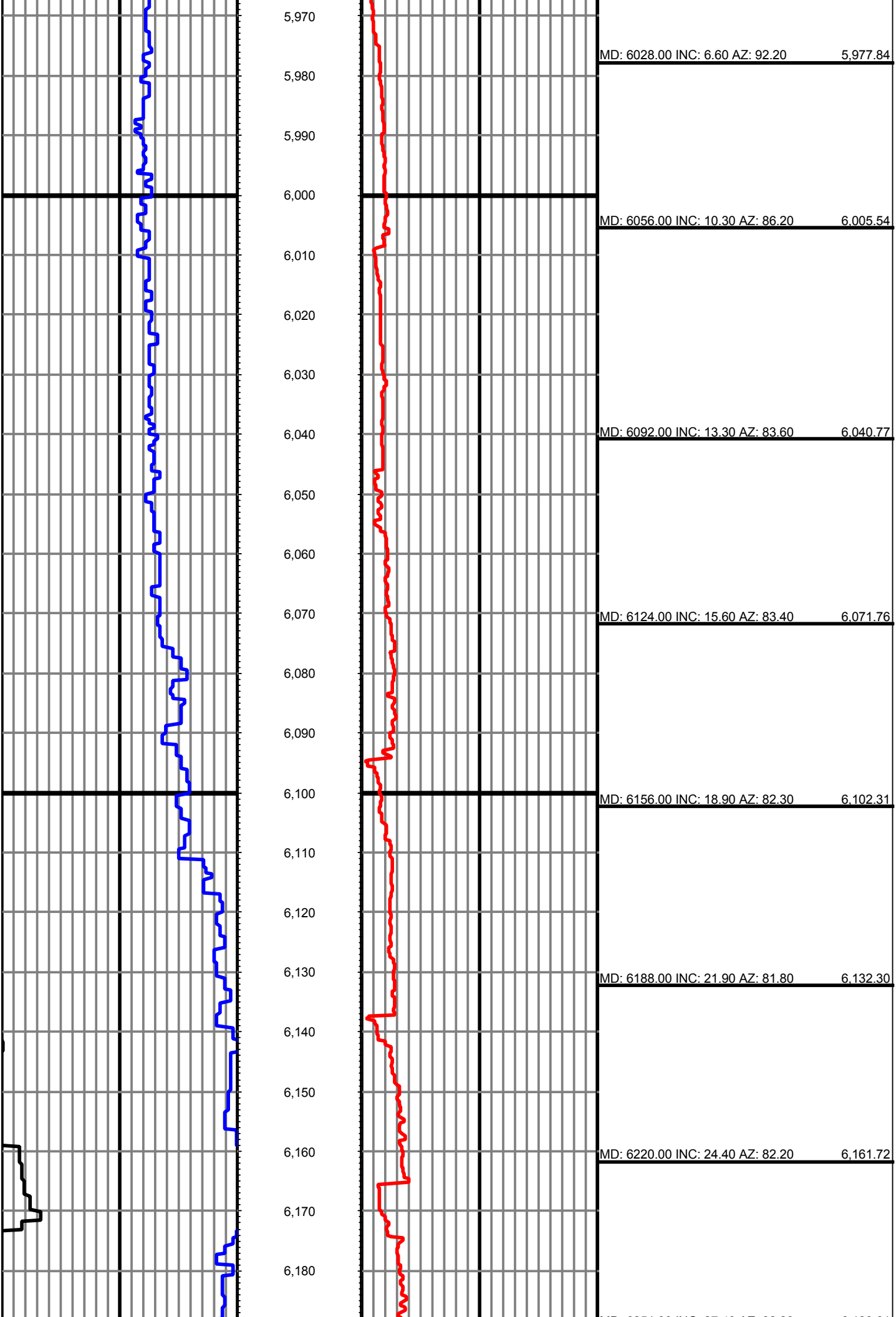












MD: 6028.00 INC: 6.60 AZ: 92.20 5,977.84

MD: 6056.00 INC: 10.30 AZ: 86.20 6,005.54

MD: 6092.00 INC: 13.30 AZ: 83.60 6,040.77

MD: 6124.00 INC: 15.60 AZ: 83.40 6,071.76

MD: 6156.00 INC: 18.90 AZ: 82.30 6,102.31

MD: 6188.00 INC: 21.90 AZ: 81.80 6,132.30

MD: 6220.00 INC: 24.40 AZ: 82.20 6,161.72

