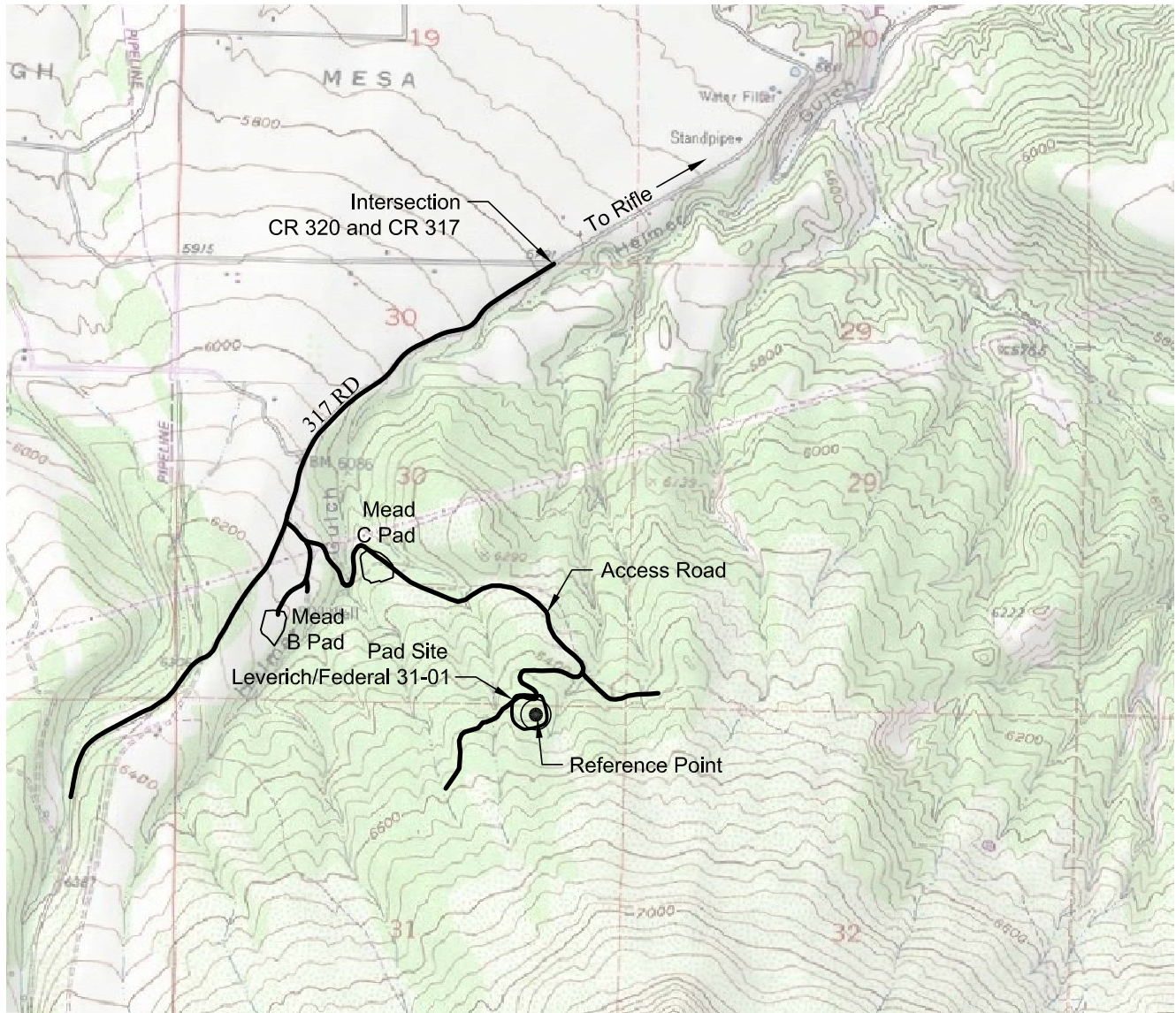


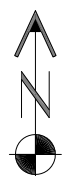
ACCESS ROAD MAP



DRIVING DIRECTIONS:

From the intersection of Garfield County Road 320 and Garfield County Road 317, Southerly for 0.9 Miles to a gravel access road heading Easterly, Left onto the Gravel Access Road Easterly for 1.2 miles to Pad Leverich/Federal 31-01.

3/25/14



North

0 2000 4000

Graphic Scale in Feet
1" = 2000'



LAND SURVEYING AND MAPPING
LAFAYETTE - WINTER PARK
Ph 303 666 0379 Fx 303 665 6320

PICEANCE ENERGY, LLC
FEDERAL 31-01 PAD

NE1/4 NE1/4 SECTION 31 T6S R93W
6th PM GARFIELD COUNTY COLORADO