

**ANADARKO PETROLEUM CORP - EBUS
DO NOT MAIL - PO BOX 4995
THE WOODLANDS, Texas**

Boyd 2N-32HZ

MAJORS 42

Post Job Summary **Cement Surface Casing**

Prepared for:
Date Prepared: 10/12/2013
Version: 1

Service Supervisor: FANTASIA, JOSEPH

Submitted by: FINNEY, SEAN

HALLIBURTON

Wellbore Geometry

Job Tubulars					MD		Shoe Joint Length ft
Type	Description	Size in	ID in	Wt lbm/ft	Top ft	Bottom ft	
Casing	9 5/8" Surface Casing	9.63	8.921	36.00	0.00	1,075.00	42.00
Open Hole Section	13 1/2" Open Hole Section		13.500		0.00	1,075.00	0.00

HALLIBURTON

Pumping Schedule

Stage / Plug #	Fluid #	Fluid Type	Fluid Name	Surface Density lbm/gal	Avg Rate bbl/min	Surface Volume	Downhole Volume
1	1	Spacer	Fresh Water Spacer	8.33	4.00	10.0 bbl	10.0 bbl
1	2	Spacer	Mud Flush	8.40	4.00	12.0 bbl	12.0 bbl
1	3	Cement Slurry	SwiftCem B2	14.20	5.00	387.0 sacks	387.0 sacks

Fluids Pumped

Stage/Plug # 1 Fluid 1: Fresh Water Spacer
DUMMY MUD / FLUSH / SPACER SBC MATERIAL

Fluid Density: 8.33 lbm/gal
Fluid Volume: 10.00 bbl
Pump Rate: 4.00 bbl/min

Stage/Plug # 1 Fluid 2: Mud Flush
DUMMY MUD / FLUSH / SPACER SBC MATERIAL
3.33 lbm/bbl Mud Flush III
42 gal/bbl Mud Flush III

Fluid Density: 8.40 lbm/gal
Fluid Volume: 12.00 bbl
Pump Rate: 4.00 bbl/min

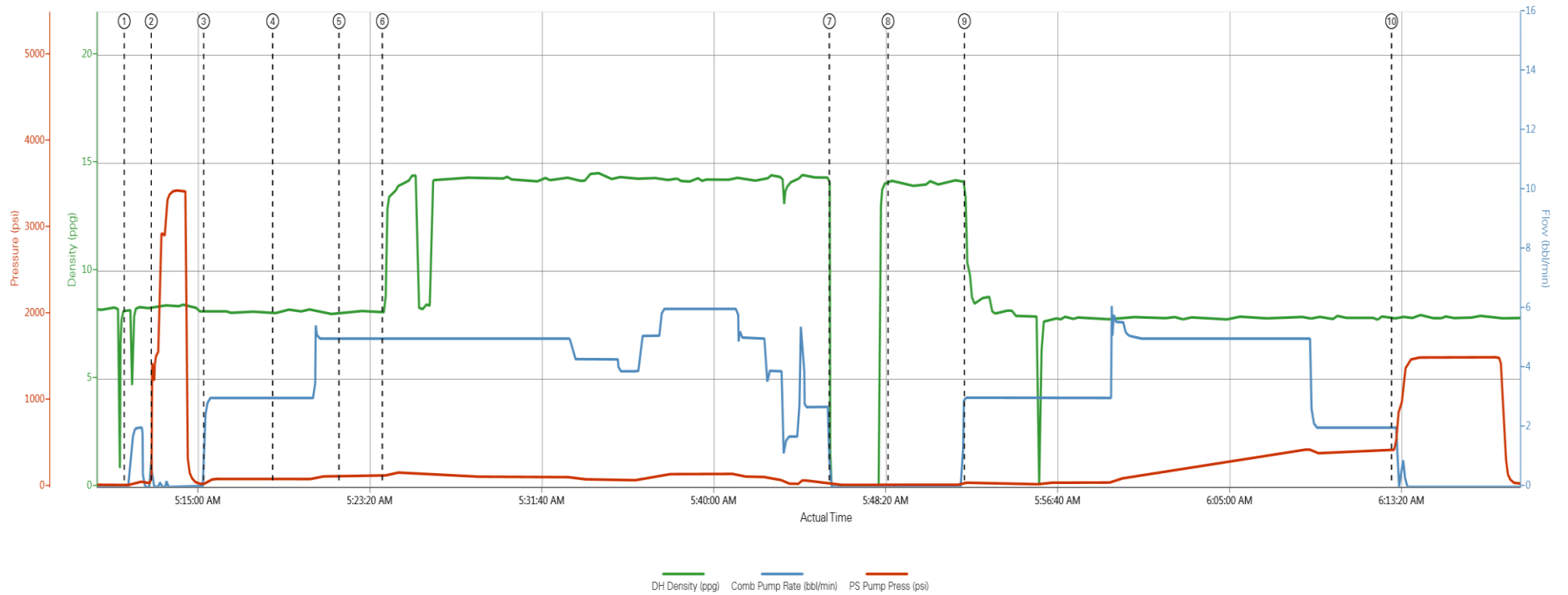
Stage/Plug # 1 Fluid 3: SwiftCem B2
SWIFTCM (TM) SYSTEM

Fluid Weight: 14.20 lbm/gal
Slurry Yield: 1.54 ft³/sack
Total Mixing Fluid: 7.63 Gal
Surface Volume: 387.0 sacks
Sacks: 387.0 sacks
Calculated Fill: 900.00 ft
Calculated Top of Fluid: 0.00 ft

HALLIBURTON

Data Acquisition

ANADARKO BOYD 2N-32HZ SURFACE



HALLIBURTON

Service Supervisor Reports

Job Log

Date/Time	Chart #	Activity Code	Pump Rate	Cum Vol	Pump		Pressure (psig)		Comments
10/06/2013 03:30		Arrive at Location from Service Center							ARRIVE AT LOCATION. RIG RUNNING CASING.
10/06/2013 03:45		Assessment Of Location Safety Meeting							PERFORM SITE ASSESSMENT AND HAZARD HUNT WITH CREW PRIOR TO SPOTTING EQUIPMENT AND RIGGING UP.
10/06/2013 05:00		Start Job							PERFROM PRE-JOB SAFETY MEETING WITH ALL PRESENT PERSONELL PRIOR TO JOB
10/06/2013 05:12		Test Lines						3420.0	PRESSURE TEST LINES TO 3500 PSI.
10/06/2013 05:15		Pump Spacer 1	4	10				36.0	PUMP 10 BBLS WATER
10/06/2013 05:18		Pump Spacer 2	4	12				91.0	PUMP 12 BBLS MUDFLUSH
10/06/2013 05:21		Pump Spacer 1	4	10				116.0	PUMP 10 BBLS WATER
10/06/2013 05:23		Pump Cement	5	106				130.0	387 SKS SWIFTCCEM MIXED AT 14.2 PPG USING RIG WATER
10/06/2013 05:45		Shutdown							
10/06/2013 05:48		Drop Top Plug							PLUG PRELOADED
10/06/2013 05:52		Pump Displacement	6	80				49.0	GOOD RETURNS THROUGHOUT. CEMENT TO SURFACE AT 70 BBLS OUT OF 80 BBLS TOTAL DISPLACEMENT. APPROX 10 BBLS CEMENT TO SURFACE.
10/06/2013 06:12		Bump Plug	3					426.0	PLUG LANDED AT 426 PSI. PRESSURE BROUGHT TO 1500 PSI AND HELD 5 MIN.
10/06/2013 06:18		Check Floats							FLOATS HELD
10/06/2013 06:30		End Job							PERFROM PRE RIG DOWN SAFETY MEETING

The Road to Excellence Starts with Safety

Sold To #: 300466		Ship To #: 3109696		Quote #:		Sales Order #: 900801639	
Customer: ANADARKO PETROLEUM CORP - EBUS				Customer Rep: Hersh, Larry			
Well Name: Boyd		Well #: 2N-32HZ		API/UWI #: 05-123-37774			
Field: WATTENBERG		City (SAP): HUDSON		County/Parish: Weld		State: Colorado	
Lat: N 40.074 deg. OR N 40 deg. 4 min. 26.4 secs.				Long: W 104.687 deg. OR W -105 deg. 18 min. 46.8 secs.			
Contractor: MAJORS		Rig/Platform Name/Num: MAJORS 42					
Job Purpose: Cement Surface Casing							
Well Type: Development Well		Job Type: Cement Surface Casing					
Sales Person: EVANS, MATTHEW		Srvc Supervisor: FANTASIA, JOSEPH			MBU ID Emp #: 485445		
Job Personnel							
HES Emp Name	Exp Hrs	Emp #	HES Emp Name	Exp Hrs	Emp #	HES Emp Name	Exp Hrs
FANTASIA, JOSEPH Brandon	4.5	485445	GRIFFITHS, ZACHARY Sakae	4.5	551430	MARKOVICH, STEVEN Michael	4.5
Equipment							
HES Unit #	Distance-1 way	HES Unit #	Distance-1 way	HES Unit #	Distance-1 way	HES Unit #	Distance-1 way
11362287C	10 mile	11748359	10 mile	NA	10 mile		
Job Hours							
Date	On Location Hours	Operating Hours	Date	On Location Hours	Operating Hours	Date	On Location Hours
TOTAL							<i>Total is the sum of each column separately</i>
Job				Job Times			
Formation Name					Date	Time	Time Zone
Formation Depth (MD)	Top		Bottom		Called Out	06 - Oct - 2013	00:00
Form Type	BHST				On Location	06 - Oct - 2013	03:30
Job depth MD	1075. ft		Job Depth TVD	1075. ft	Job Started	06 - Oct - 2013	05:00
Water Depth				Wk Ht Above Floor	Job Completed	06 - Oct - 2013	06:30
Perforation Depth (MD)	From		To		Departed Loc	06 - Oct - 2013	08:00
Well Data							
Description	New / Used	Max pressure psig	Size in	ID in	Weight lbm/ft	Thread	Grade
13 1/2" Open Hole Section				13.5			
9 5/8" Surface Casing	Unknown		9.625	8.921	36.		J-55
Sales/Rental/3rd Party (HES)							
Description				Qty	Qty uom	Depth	Supplier
CMT CASING EQUIPMENT BOM				1	JOB		
MILEAGE FOR CEMENTING CREW,ZI				30	MI		
ZI FUEL SURCHG-CARS/PICKUPS<1 1/2TON				30	MI		
KIT,HALL WELD-A				1	EA		
CNTRLZR, 9 5/8"x13 3/4',#500-0963-1375				7	EA		
Description				Qty	Qty uom	Depth	Supplier

Summit

Saturday, October 12, 2013 13:30:00

Version:

BASKET - CEMENT - 9-5/8 CSG X 12-1/4					1	EA			
PLUG,CMTG,TOP,9 5/8,HWE,8.16 MIN/9.06 MA					1	EA			
COLLAR-STOP-9 5/8"-FRICTION-HINGED					2	EA			
Fluid Data									
Stage/Plug #: 1									
Fluid #	Stage Type	Fluid Name	Qty	Qty uom	Mixing Density lbm/gal	Yield ft ³ /sk	Mix Fluid Gal/sk	Rate bbl/min	Total Mix Fluid Gal/sk
1	Fresh Water Spacer		10.00	bbl	8.33	.0	.0	4.0	
2	Mud Flush		12.00	bbl	8.4	.0	.0	4.0	
3.33 lbm/bbl		MUD FLUSH III, 40 LB SACK (101633304)							
42 gal/bbl		MUD FLUSH III - SBM (528788)							
3	SwiftCem B2	SWIFTCM (TM) SYSTEM (452990)	387.0	sacks	14.2	1.54	7.63	5.0	7.63
7.63 Gal		FRESH WATER							
Calculated Values		Pressures		Volumes					
Displacement		Shut In: Instant		Lost Returns		Cement Slurry		Pad	
Top Of Cement		5 Min		Cement Returns		Actual Displacement		Treatment	
Frac Gradient		15 Min		Spacers		Load and Breakdown		Total Job	
Rates									
Circulating		Mixing		Displacement		Avg. Job			
Cement Left In Pipe		Amount	42 ft	Reason	Shoe Joint				
Frac Ring # 1 @	ID	Frac ring # 2 @	ID	Frac Ring # 3 @	ID	Frac Ring # 4 @	ID		
The Information Stated Herein Is Correct				Customer Representative Signature					

