



Weatherford®

Tooke Rockies, Inc.
(A Weatherford Company)

884 Implement Dr.
Dickinson, ND 58601
701-227-4408

717 West Platte
PO BOX 435
Casper, WY 82601
307-265-2124

Surface Logging Systems

Scale 1:240 (5"=100') Imperial
Measured Depth Log

Well Name: Watkins 30-5 8H (Pilot Hole)
Location: SW/NW, Sec 30, T4S-R64W. Arapahoe County, CO
License Number: API- 05-005-07189-00 Region: DJ Basin
Spud Date: 3/2/2014 Drilling Completed: 3/6/2014
Surface Coordinates: 2280' FNL & 350' FWL of SW/NW of , Sec.30, T4S-R64W,
Arapahoe County, CO.
Bottom Hole 2914.49' FNL & 361.88' FWL of SW/NW Sec. 30, T4S-R64W, Arapahoe County, CO.
Coordinates:
Ground Elevation (ft): 5765' K.B. Elevation (ft): 5789'
Logged Interval (ft): 7100' To: 8203' Total Depth (ft): 8203'
Formation: Niobrara
Type of Drilling Fluid: INVERT/OBM

Printed by MUD.LOG from WellSight Systems 1-800-447-1534 www.WellSight.com

OPERATOR

Company: Conoco/Phillips
Address: Attn: Abby Tomkiewicz
Three Westlake Park, Rm 14013
550 Westlake Park Blvd, Houston, TX 77079, Office: 832-486-2543.

GEOLOGIST

Name: Todd Thiesse, Douglas Bower
Company: Tooke Rockies/ Weatherford SLS
Address: PO Box 435
Casper, WY. 82602
307.265.2124

Supervision

Project Geologist:
Drilling Engineer: Gary Hamilton, Ben Tolman, John Bengé- Conoco/Phillips
Drilling Sup: Bob Strickler- Conoco/Phillips
Company Rep: Richard Perez, Wes Evans, (Day Leads)
Company Rep: Frank Holubec, Mike Weatherly (Night Leads)
Well Site Safety: Rainey Schexnider, Jeff Frantz
Contact Geologist: Abby Tomkiewicz- Conoco/Phillips
Drilling & Comp. Mgr: Derly Gonzalez-Conoco/Phillips

Comments

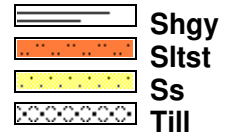
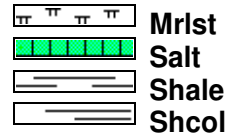
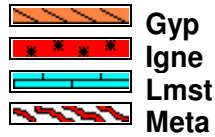
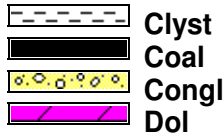
Drilling Co.--H & P, Rig #280

Toolpusher- , Mike Stevens, Josh Coleman

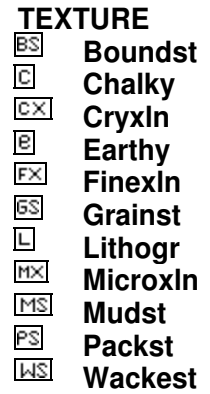
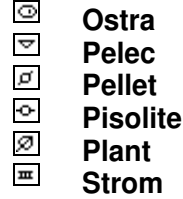
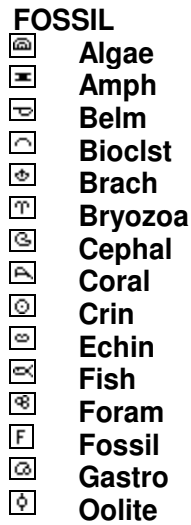
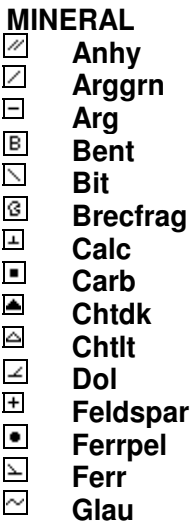
Dir. Co.- Sperry

Mud Co.- Baroid/Haliburton, Chase Putnam, Kevin Wolff

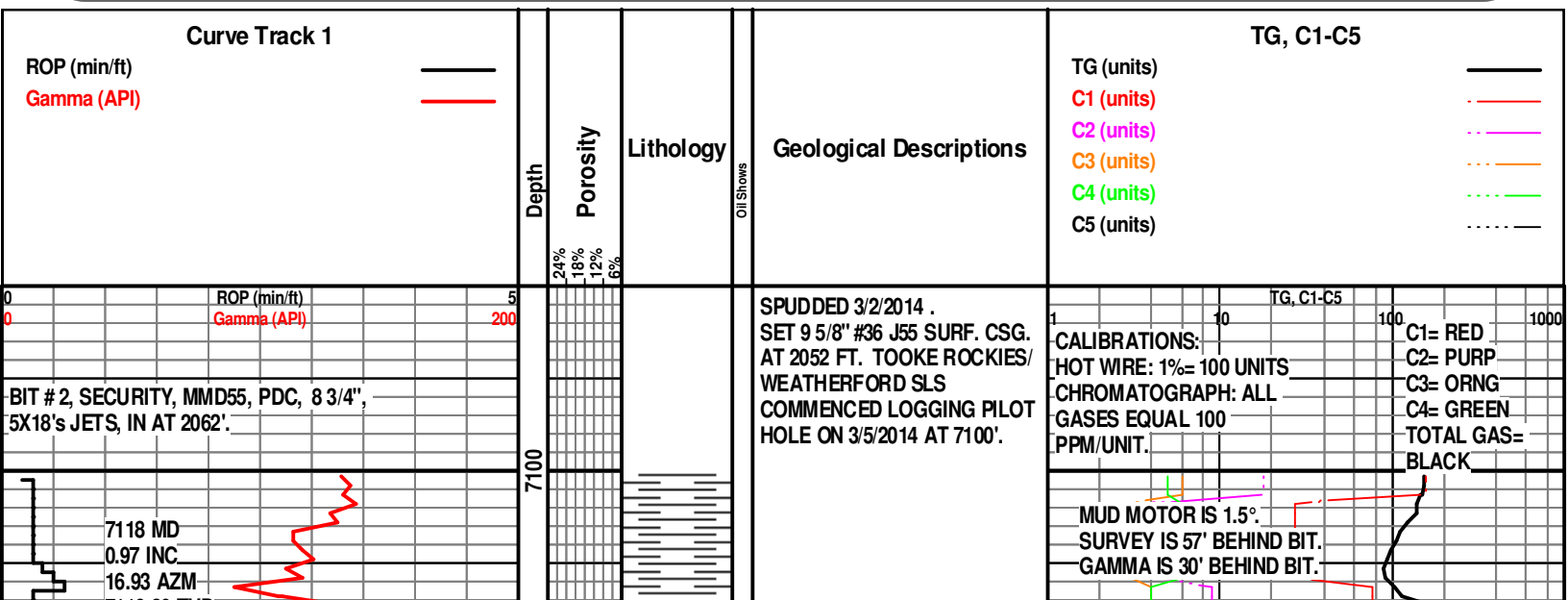
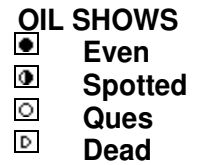
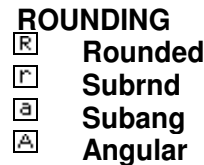
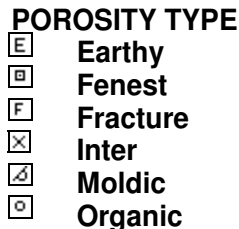
ROCK TYPES

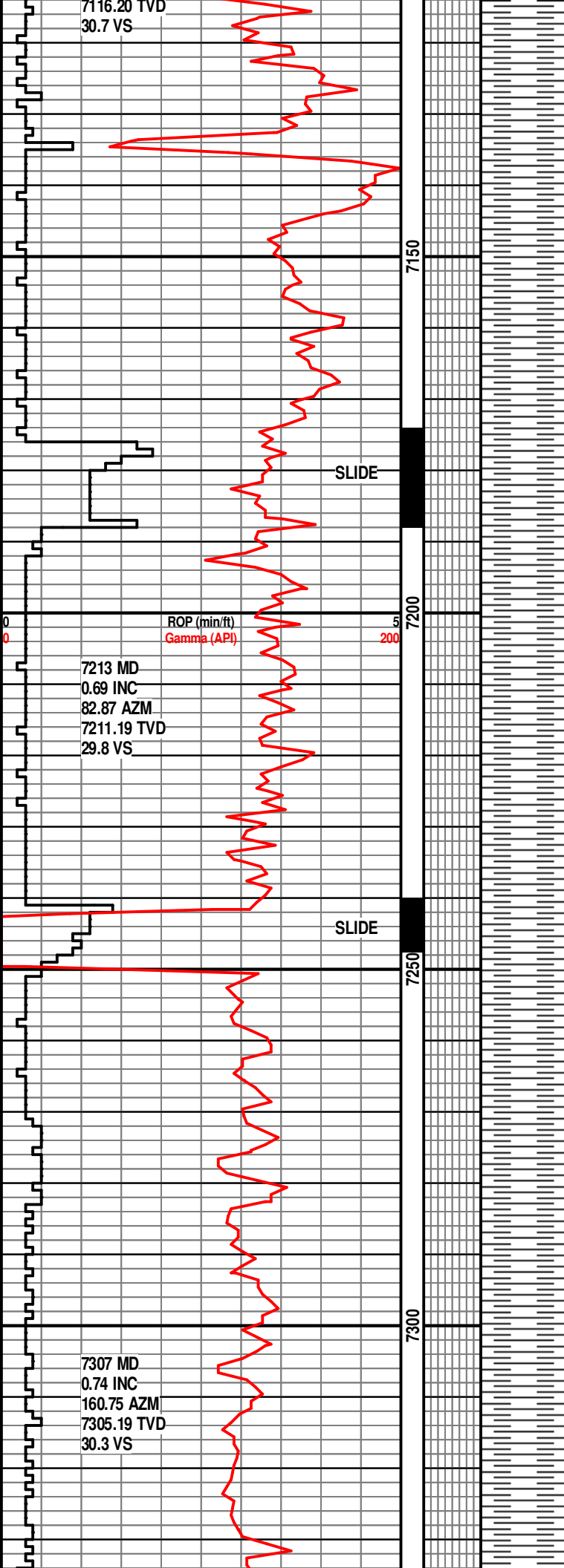


ACCESSORIES



OTHER SYMBOLS



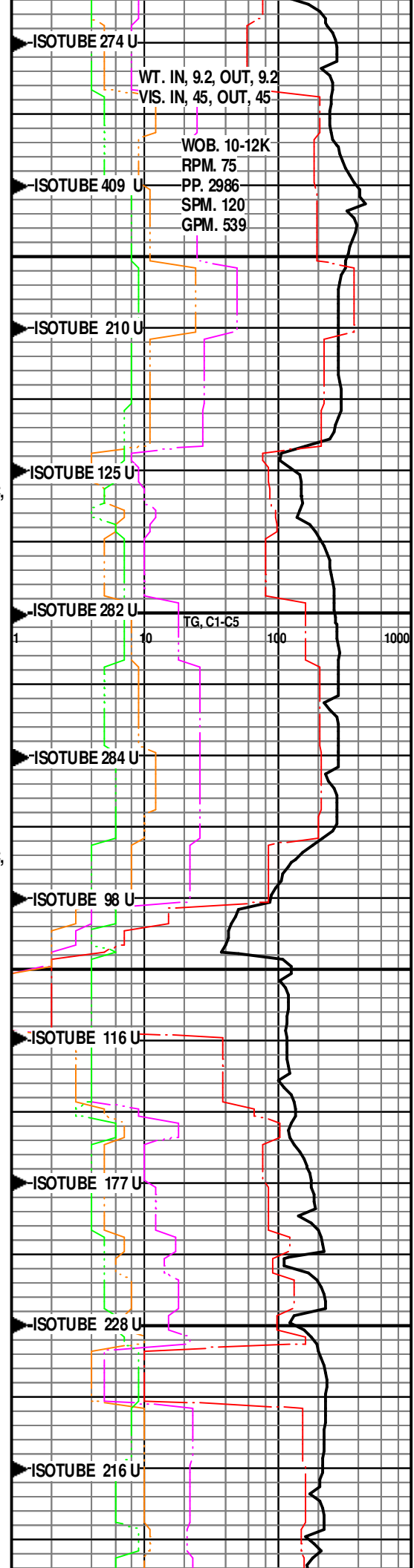


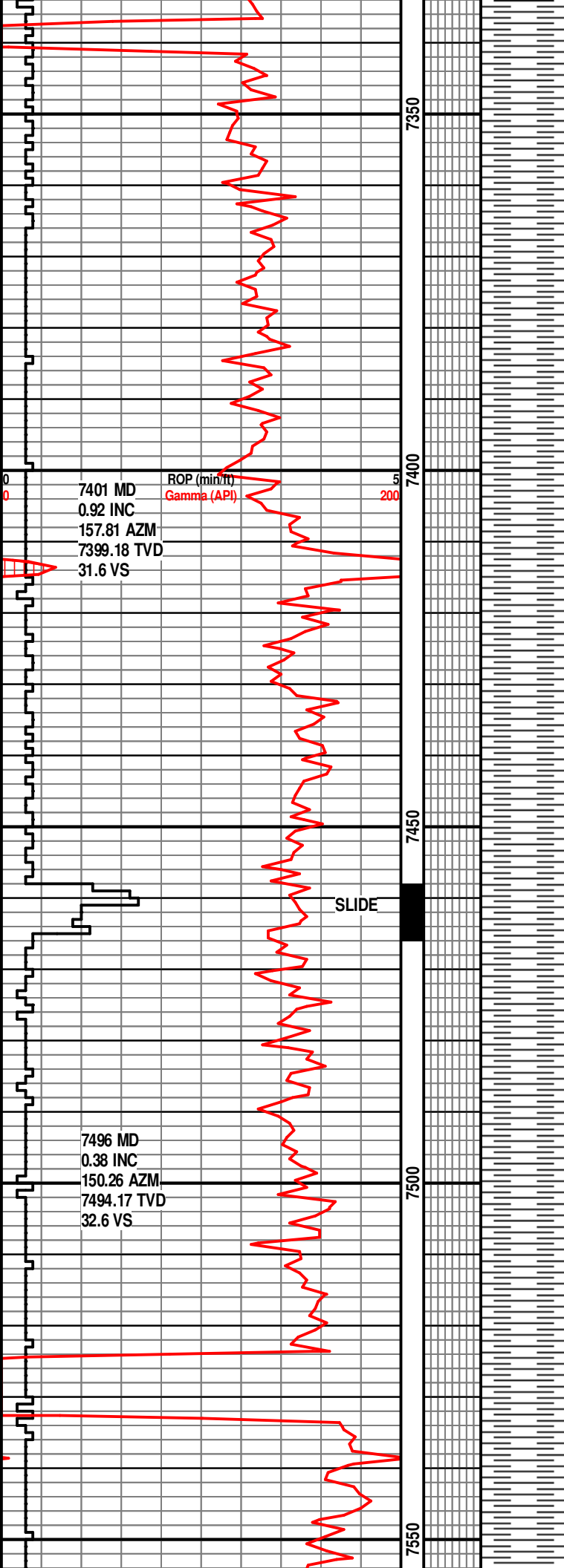
SH- DK GY-GY, BLKY-PLTY,
SBWXY, SL CALC, SFT-FRM.

SH- DK GY-GY, OCC LT GY,
BLKY-PLTY, SBWXY, SL CALC,
SFT-FRM.

SH- DK GY-GY, OCC LT GY,
BLKY-PLTY, SBWXY, SL CALC,
SFT-FRM.

SH- DK GY-GY, BLKY-PLTY,
SBWXY, SL-NON CALC,
SFT-SL FRM.





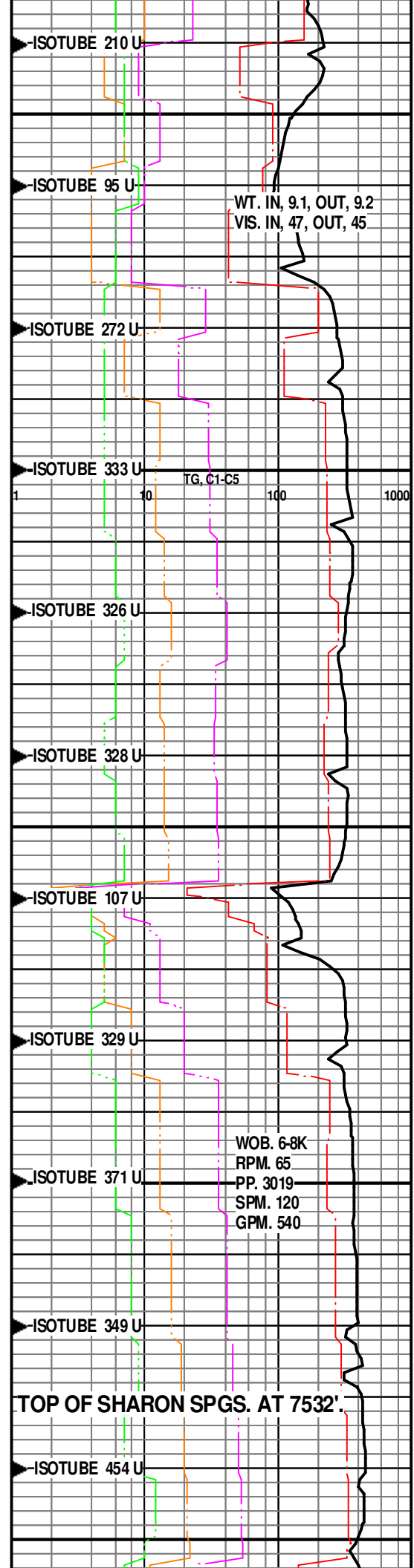
SH- DK GY-GY, BLKY-PLTY,
SBWXY, SL-NON CALC,
SFT-FRM.

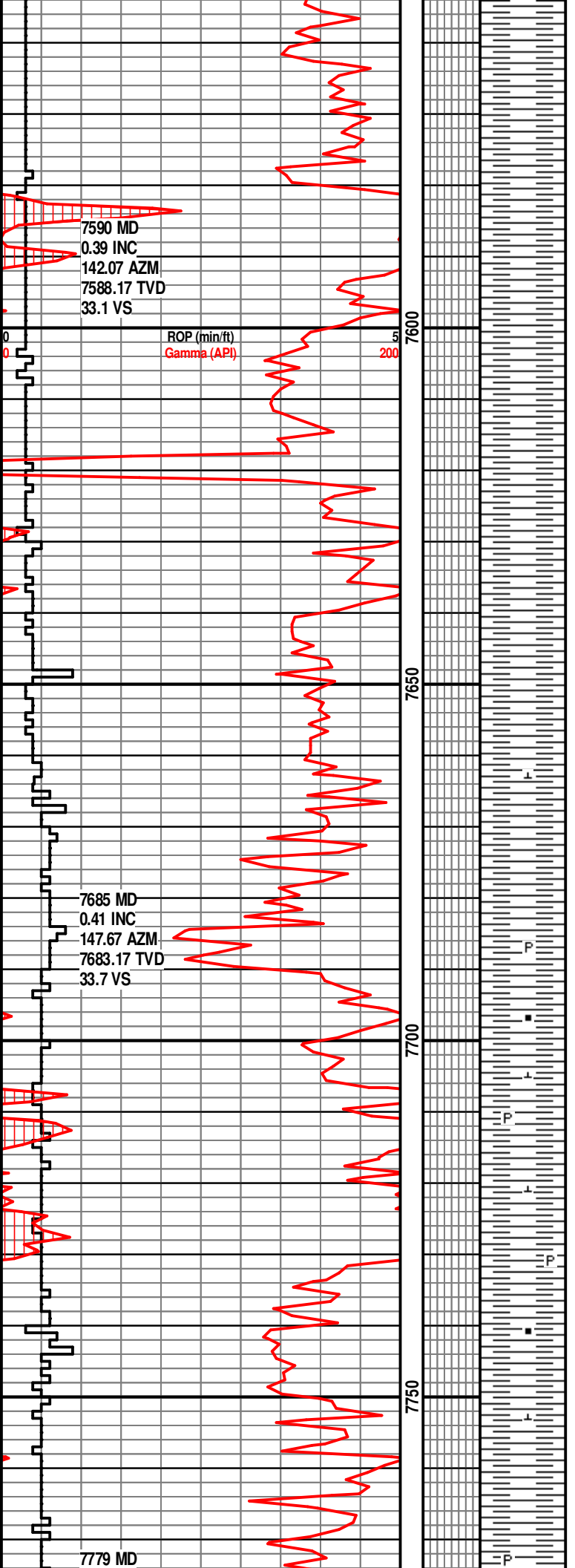
SH- DK GY-GY, TR LT BRN,
BLKY-PLTY, SBWXY, SL-NON
CALC, SFT-FRM.

SH- DK GY-GY, BRN,
BLKY-PLTY, SBWXY, SL-NON
CALC, SFT-FRM.

SH- DK GY-GY, SME BRN,
BLKY-PLTY, SBWXY, SL-NON
CALC, SFT-MOD FRM.

SH- DK GY-GY, SCT BRN,
PRED BLKY, SME PLTY,
SBWXY, SL-NON CALC,
SFT-MOD FRM.





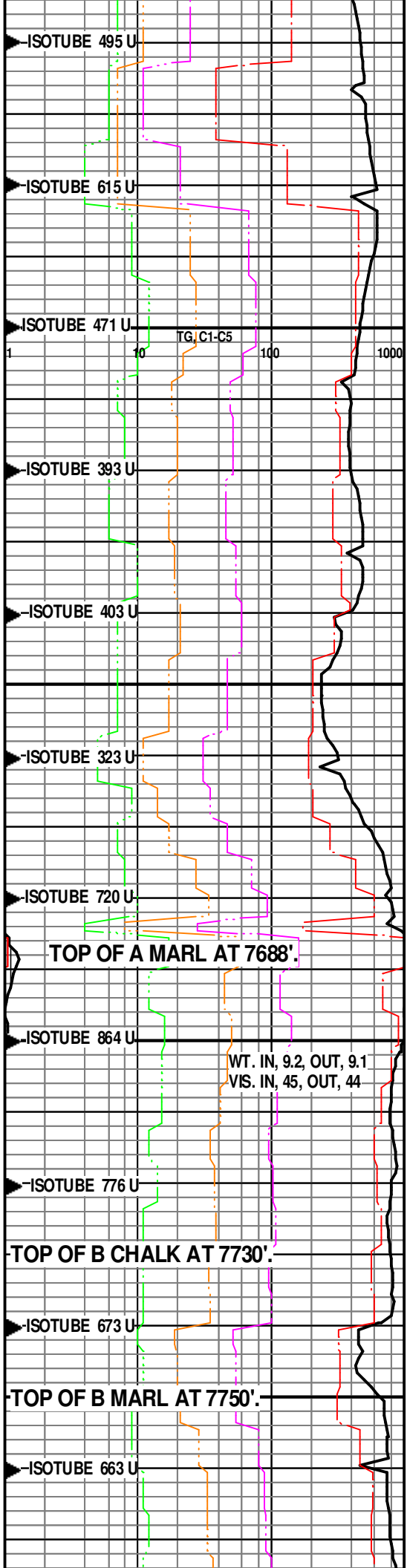
SH- DK GY-GY, TR BRN,
BLKY-PLTY, SBWXY, SL-NON
CALC, SFT-FRM.

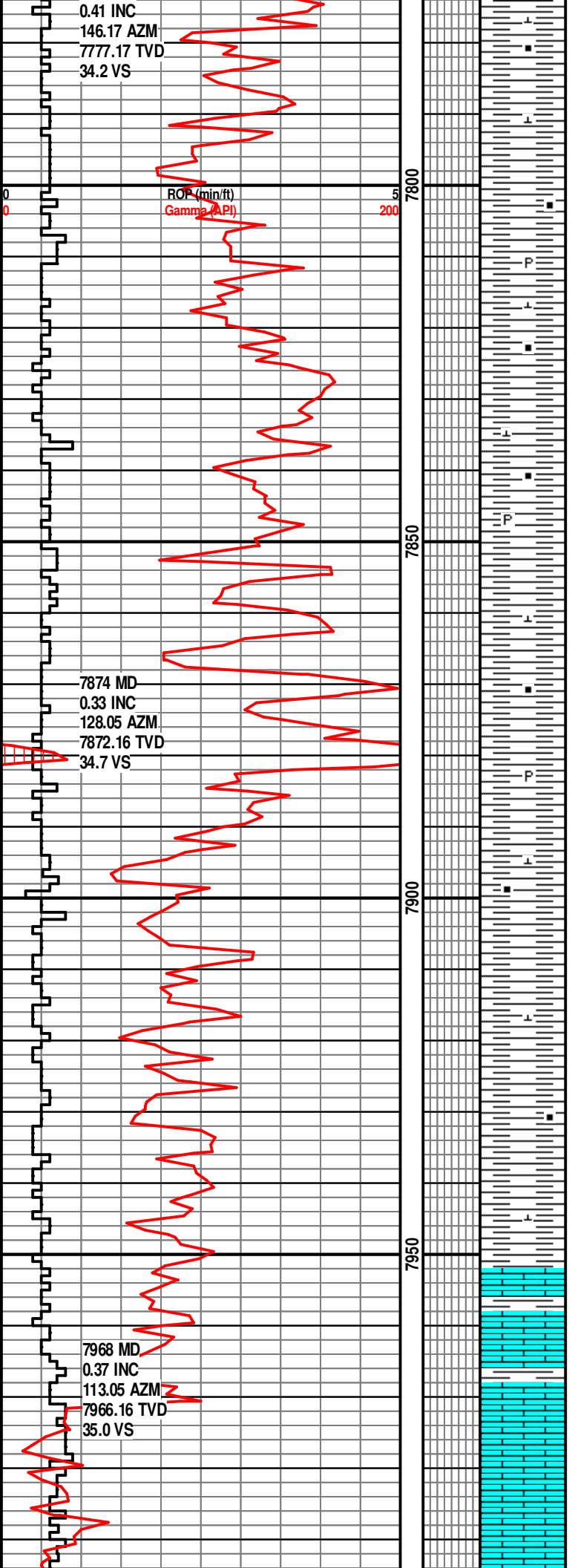
SH- DK GY-GY, OCC BRN,
BLKY-PLTY, SBWXY, SL CALC,
MOD SFT-FRM.

SMPL TOP NIOBRARA
AT 7662'.

SH- DK GY-GY, SB BLKY-PLTY,
SBWXY, VERY CALC, TR CALC
FRAGS, TR PYR, MOD
SFT-FRM.

SH- DK GY-GY, BLK,
BLKY-PLTY, SBWXY, V
CALC-LMY, CARB, TR PYR,
SFT-FRM.





SH- DK GY-GY, BLK,
BLKY-PLTY, SBWXY, V
CALC-LMY, CARB, TR PYR, TR
BENT, SFT-FRM.

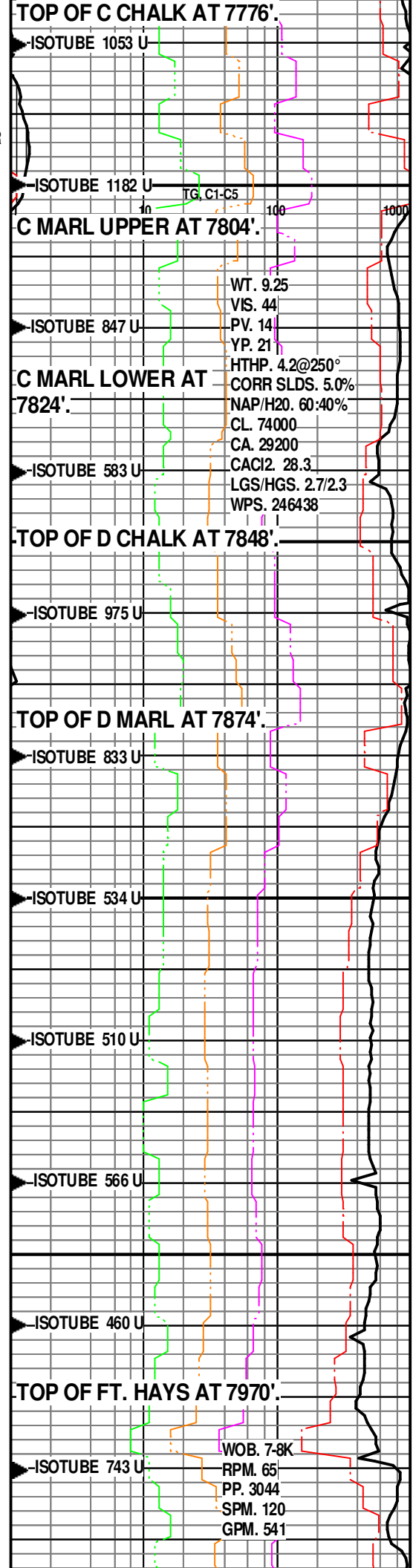
SH- DK GY-GY, BLK,
BLKY-PLTY, SBWXY, V
CALC-LMY, CARB, TR PYR,
SFT-FRM, TR BENT-LT GY.

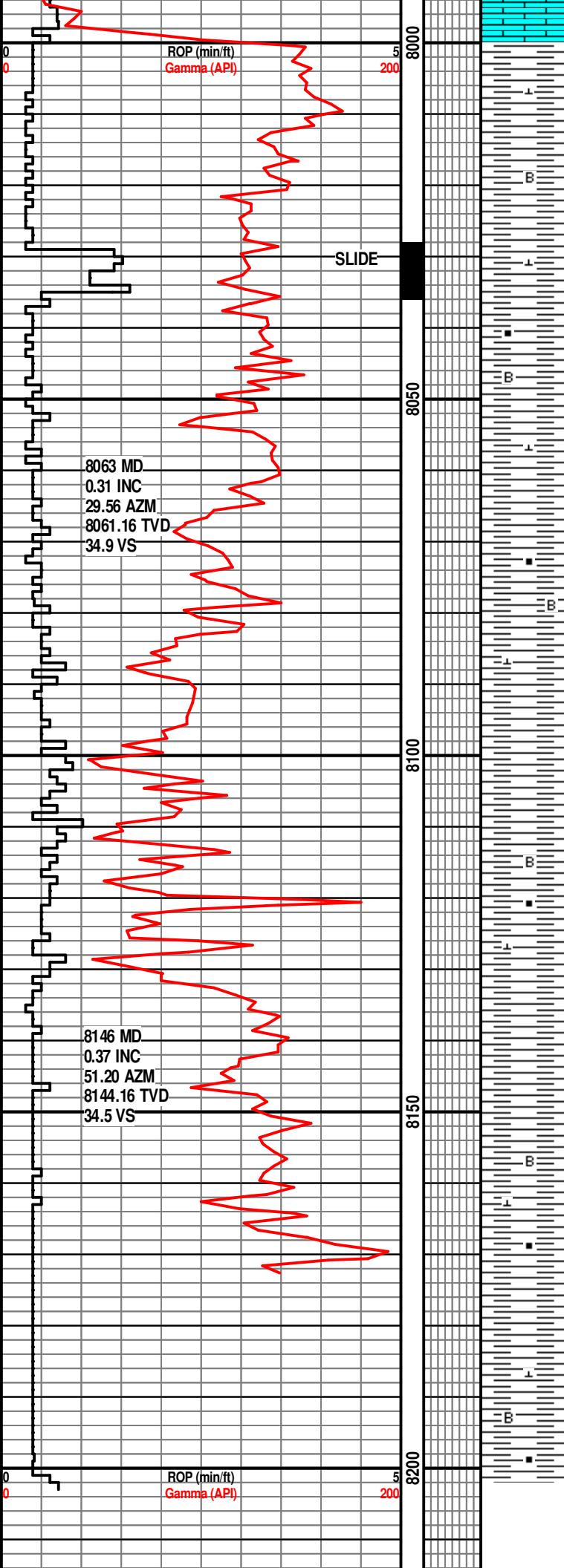
SH- DK GY-GY, BLK,
BLKY-PLTY, SBWXY, V
CALC-LMY, CARB, TR PYR,
SFT-FRM, TR BENT-LT GY.

MIDNIGHT DEPTH 7923' MD
3/6/2014

SMPL TOP FT. HAYS
AT 7952'.

LS- TAN-LT GY, CRM, MICXL,
DNS, TR CARB LAM, TR PYR,
SFT-FRM, W/ TR SH.





SH- DK GY-BLK, BLKY-PLTY,
SBWXY, MOD CARB, SLTY IN
PTS, V CALC, MOD FRM-FRM,
TR BENT-CRM.

SH- DK GY-BLK, BLKY-PLTY,
SBWXY, CARB, SLTY IN PTS, V
CALC, MOD FRM-FRM. TR
LS-LT GRY-TAN.

SH- DK GY-BLK, BLKY-PLTY,
SBWXY, CARB, OCC SLTY, V
CALC, SFT-FRM. TR BENT-LT
GY-CRM.

SH- DK GY-BLK, BLKY-PLTY,
SBWXY, CARB, OCC SLTY, TR
CALC FRAG, V CALC,
SFT-FRM. TR BENT-TAN-CRM.

SH- DK GY-BLK, BLKY-PLTY,
SBWXY, CARB, SLTY IN PTS,
MOD-V CALC, SFT-MOD FRM.
TR BENT, CRM-TAN.

TD PILOT HOLE AT
8203' DRILLERS
DEPTH ON 3/6/2014

