

LOG created using LPLOT VH Version 3.0, June 04, 2013, Copyright (C) 1999-2009 Pason Systems Corp.

**OPERATOR:** NOBLE ENERGY INC  
**WELL:** SHABLE USX PC AB11-63-1HNL  
**LOCATION:** SEC11 T7N R64W  
**COUNTY:** WELD  
**STATE:** COLORADO  
**SPOT:** 698' FSL, 250' FWL  
**ELEVATION:** 4818'GL, 4834'KB  
**FIELD:** WATTENBERG  
**SPUD DATE:** 5/20/13  
**TD DATE:** 6/2/13  
**DATES LOGGED:** 5/21/13 - 6/2/13  
**DEPTHS LOGGED:** 802'- 16399'  
**GEOLOGISTS:** GARY MYERS, TED STOCKWELL  
**DRILLING FLUID:** LSND  
**DRILLING RIG:** PRECISION 828  
**API:** 05-123-36701  
**LOG TYPE:** VERTICAL  
**SCALE:** 1:240 (5 inches per 100 feet)  
**REMARKS:** WELLSITE GEOLOGICAL SERVICES PROVIDED BY COLUMBINE LOGGING, INC.

LOG CONTINUES ON FILE: Shable USX PC AB11-63-1HNL Horiz.lplot

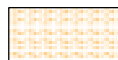
### LITHOLOGIES



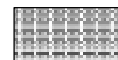
Sandstone



Shaly Sandstone



Shaly Siltstone



Silty Shale

### ENGINEERING SYMBOLS



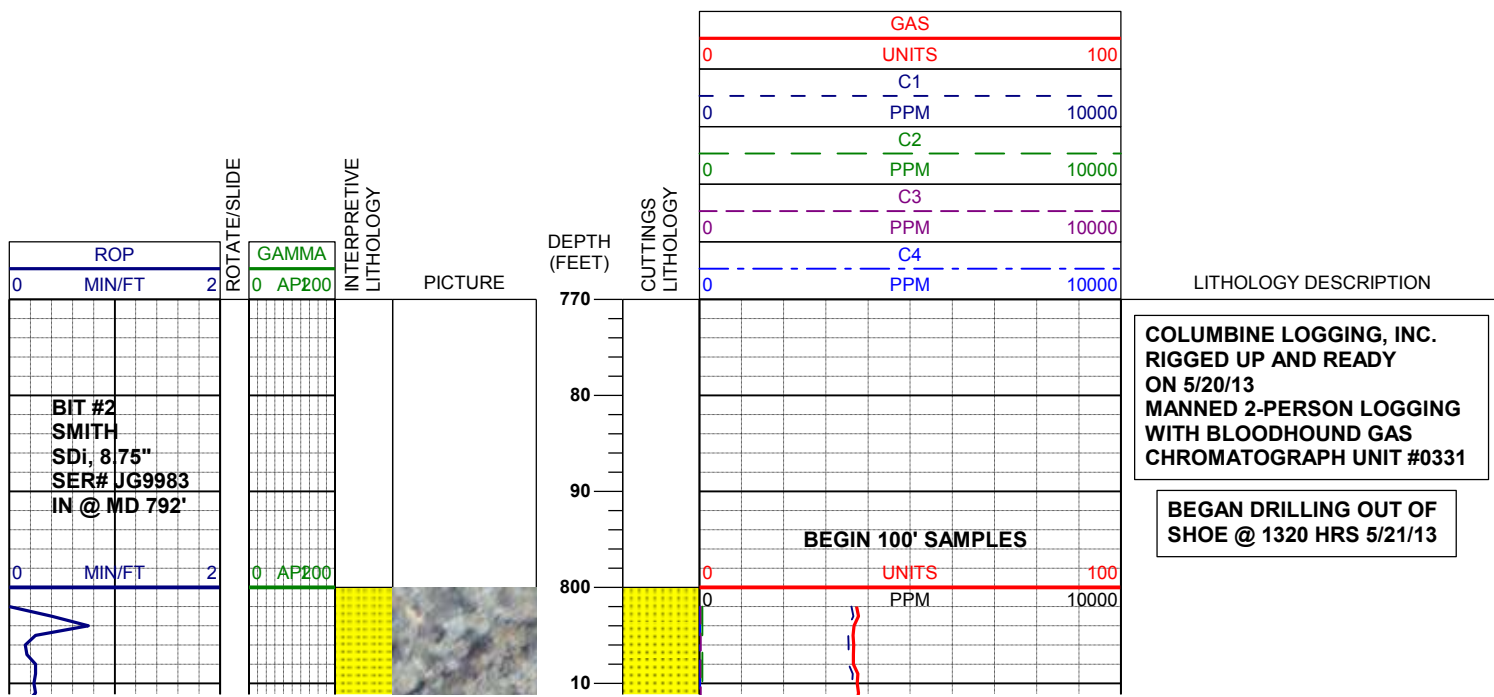
Connection

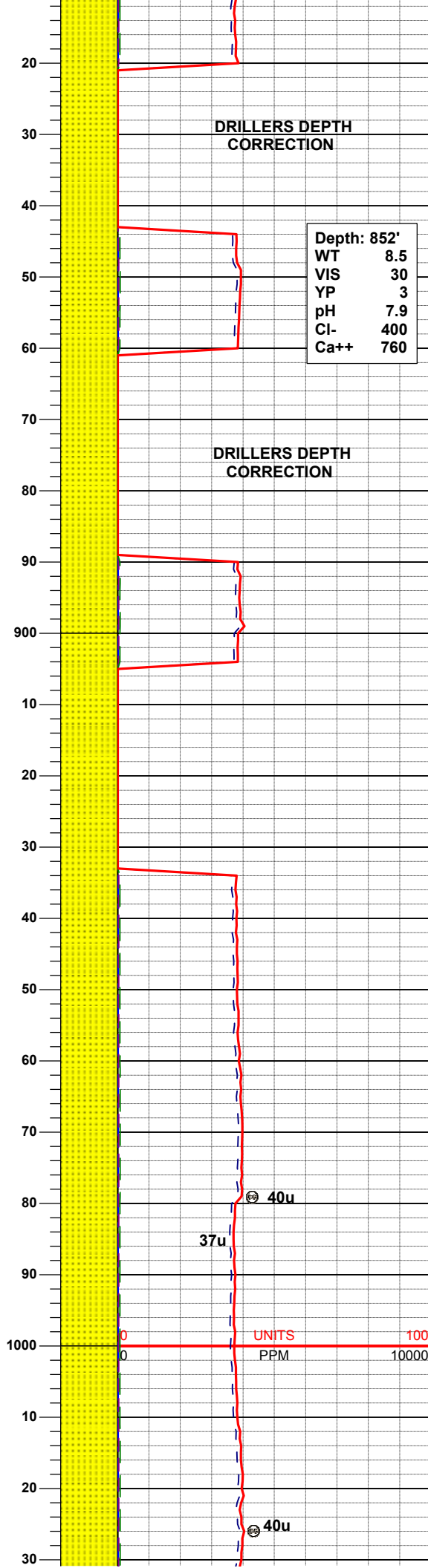
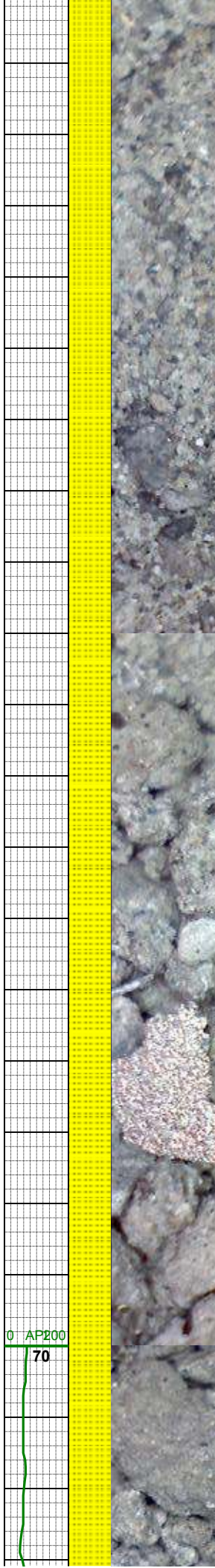
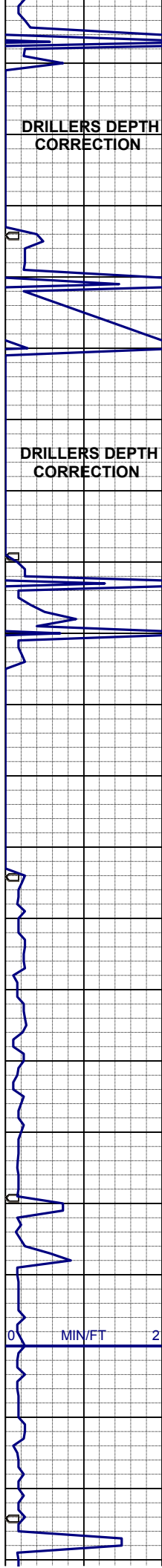


Connection Gas



Midnight Depth

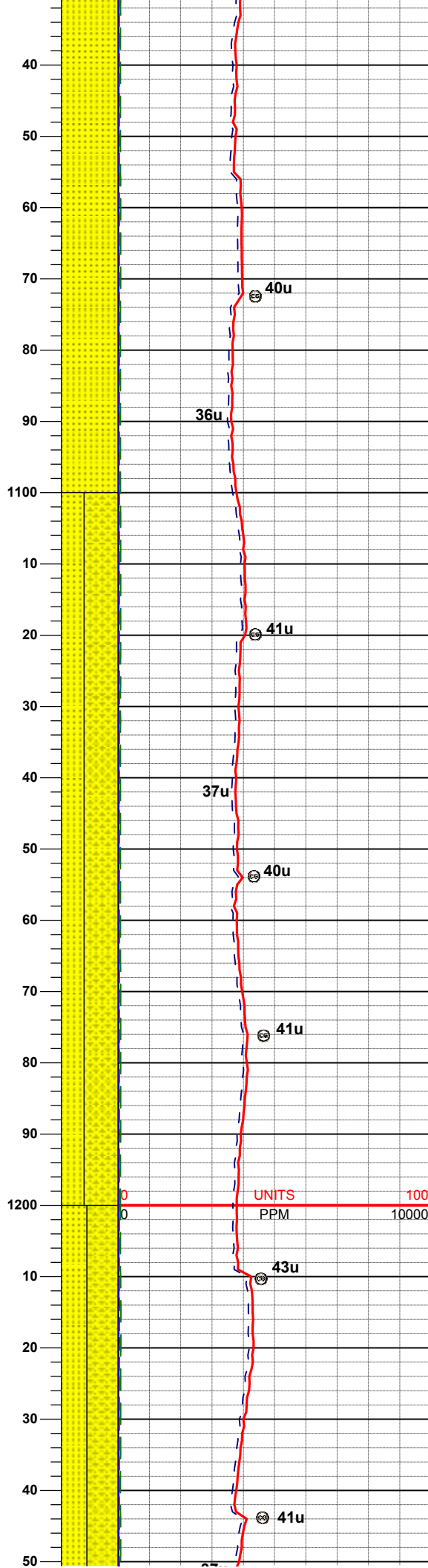
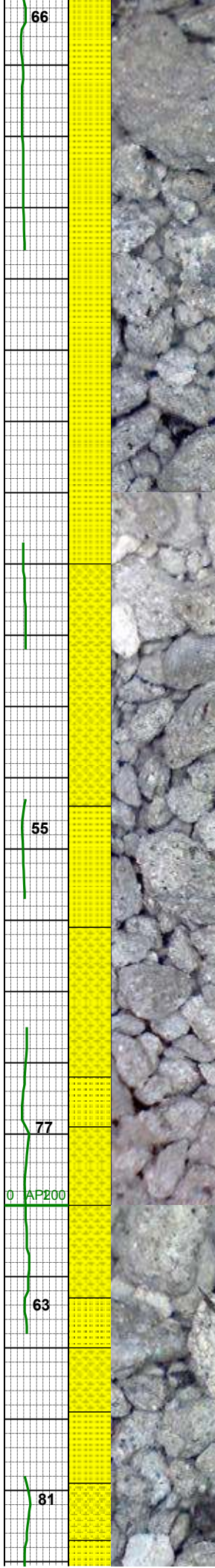
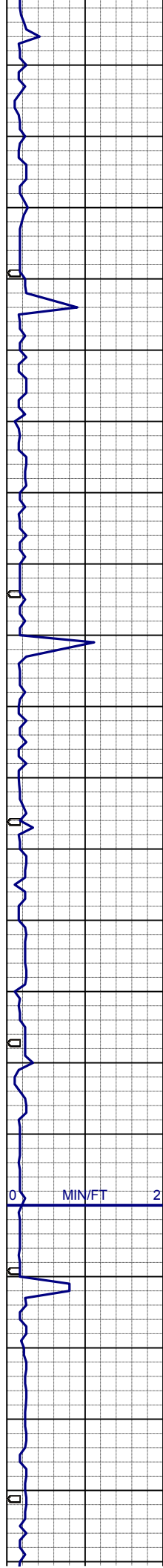




MD 838'  
INC 0.6°  
AZI 301.1°  
TVD 838.0'  
WT 8.6 / VIS 34  
SS: wh- vltgy, sme bf, clr- trnsl, m-fgr, pred sft, blk- sbbkly, w srt, p cmt, sil- slarg mtx, mod calc, slmica

MD 928'  
INC 1.5°  
AZI 297.0°  
TVD 928.0'  
SS: wh- vltgy, sme bf, clr- trnsl, m-fgr, sft- sl firm, blk- sbbkly, w srt, p cmt, sil- slarg mtx, mod calc, slmica, tr glau

MD 1018'  
INC 1.2°  
AZI 327.4°  
TVD 1018.0'



SS: wh- ltgy, sme bf, clr- trnsI, m-fgr,  
sft- sl firm, blkY-sbblky, w srt, p cmt,  
sil- slarg mtX, mod calc, simica, tr glau

MD 1095'  
INC 1.1°  
AZI 332.5°  
TVD 1094.9'

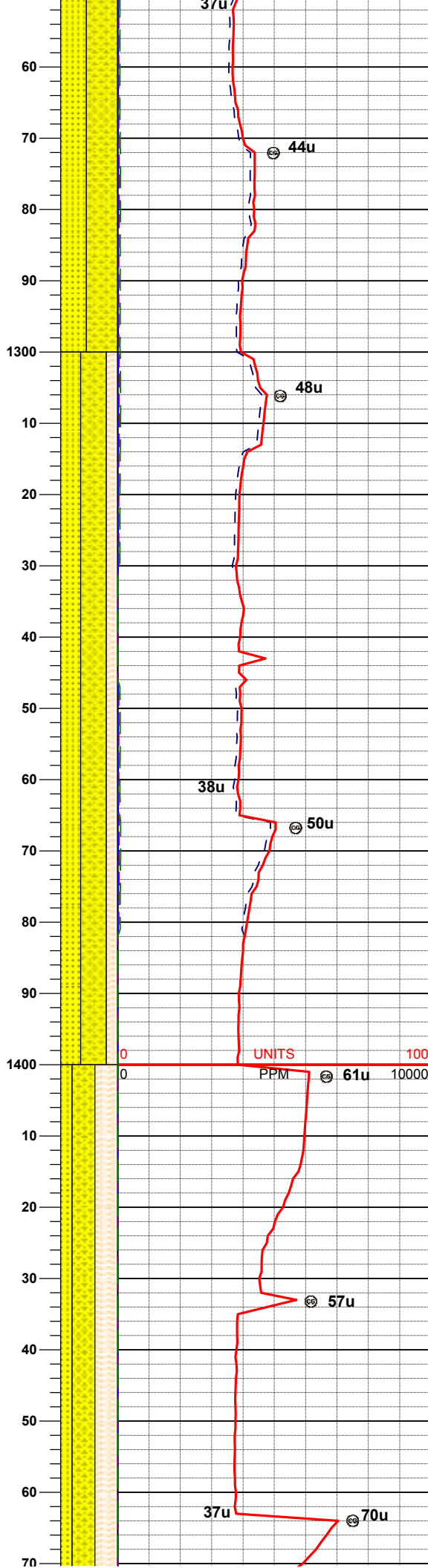
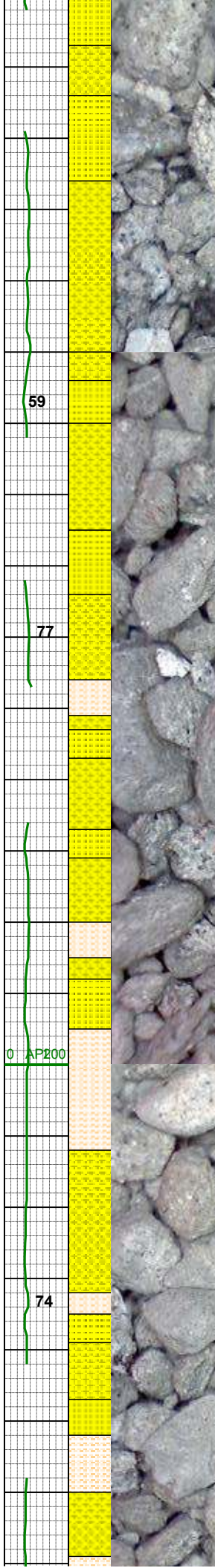
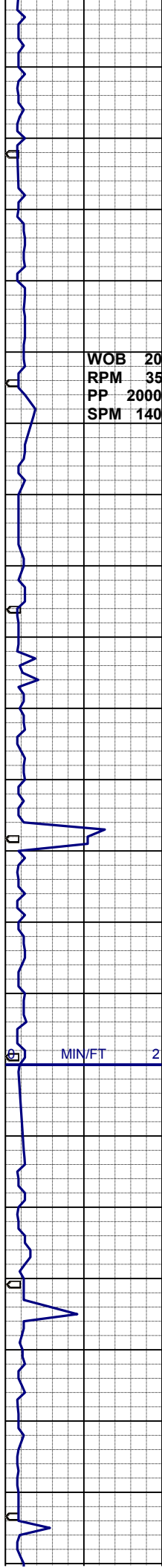
SS: wh- ltgy, sme bf, clr- trnsI, m-fgr,  
sft- sl firm, blkY-sbblky, w srt, p cmt,  
sil- slarg mtX, mod calc, simica, tr  
glau, grdg- SHYSS: ltgy-mgy, trnsI-  
op, sft-firm, sbblky-sbplty, mod srt, sil-  
arg mtX, sl calc

MD 1190'  
INC 0.5°  
AZI 194.5°  
TVD 1189.9'

UNITS 100  
PPM 10000

SS: wh- ltgy, sme bf, clr- trnsI, m-fgr,  
sft- sl firm, blkY-sbblky, w srt, p cmt,





sil- slarg mtz, mod calc, slmica, tr glau, grdg- SHYSS: ltgy-mgy, trnslop, sft-firm, sbbly-sbply, mod srt, sil-arg mtz, sl calc

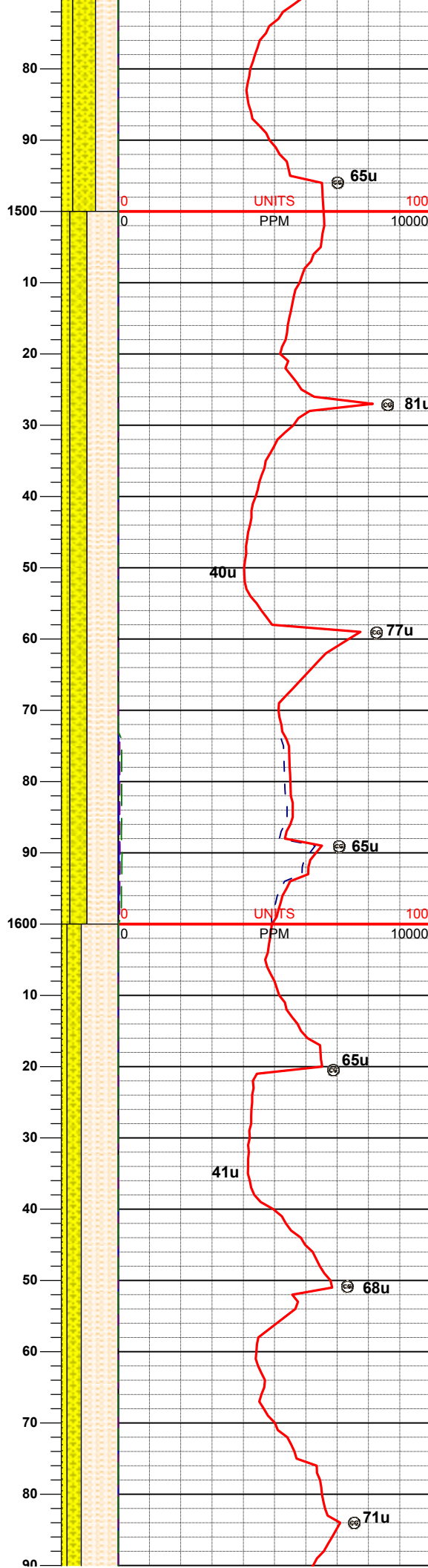
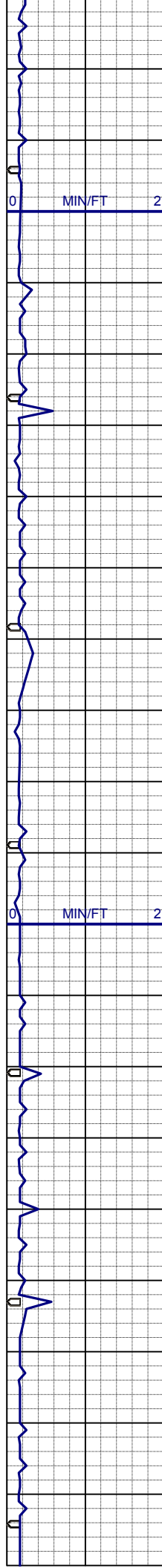
MD 1285'  
INC 1.0°  
AZI 144.3°  
TVD 1284.9'

SHYSLTST: lt-dkgy, sft-firm, f-vfgr, sbbly-sbply, modsrt, arg mtz, slcalc  
SS: wh- ltgy, sme bf, clr- trnslop, m-fgr, sft- sl firm, blk- sbbly, w srt, p cmt, sil- slarg mtz, mod calc, slmica, tr glau, grdg- SHYSS: ltgy-mgy, trnslop, sft-firm, sbbly-sbply, mod srt, sil-arg mtz, sl calc

MD 1380'  
INC 1.0°  
AZI 109.6°  
TVD 1379.9'

SHYSLTST: lt-dkgy, sft-firm, f-vfgr, sbbly-sbply, modsrt, arg mtz, slcalc  
SS: wh- ltgy, sme bf, clr- trnslop, m-fgr, sft- sl firm, blk- sbbly, w srt, p cmt, sil- slarg mtz, mod calc, slmica, tr glau, grdg- SHYSS: ltgy-mgy, trnslop, sft-firm, sbbly-sbply, mod srt, sil-arg mtz, sl calc

MD 1475'



MD 1475  
INC 1.3°  
AZI 84.0°  
TVD 1474.9'

WT 8.4 / VIS 28

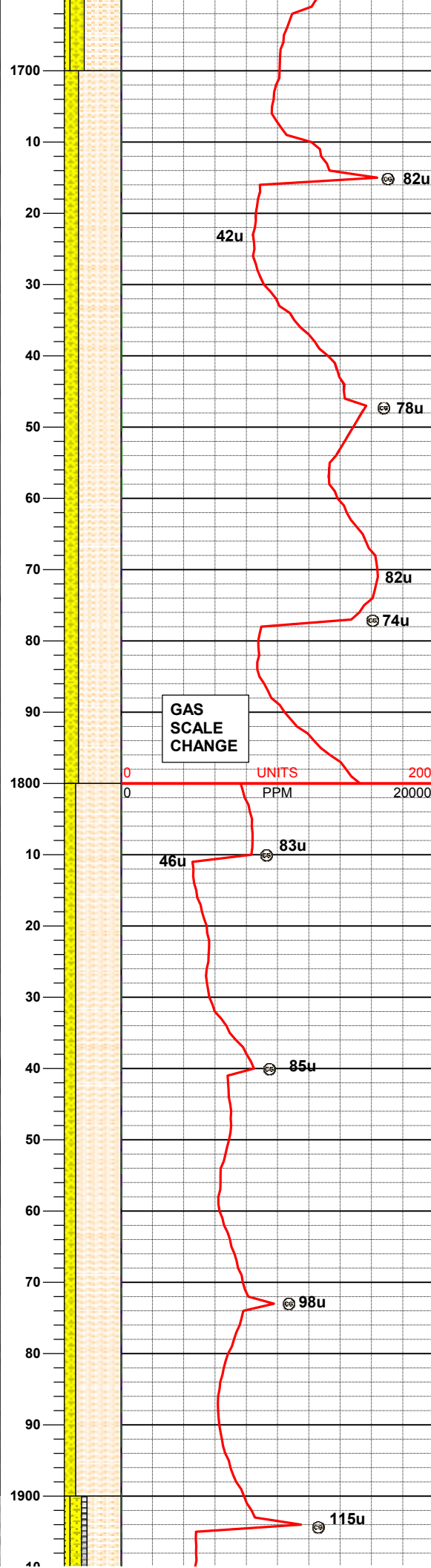
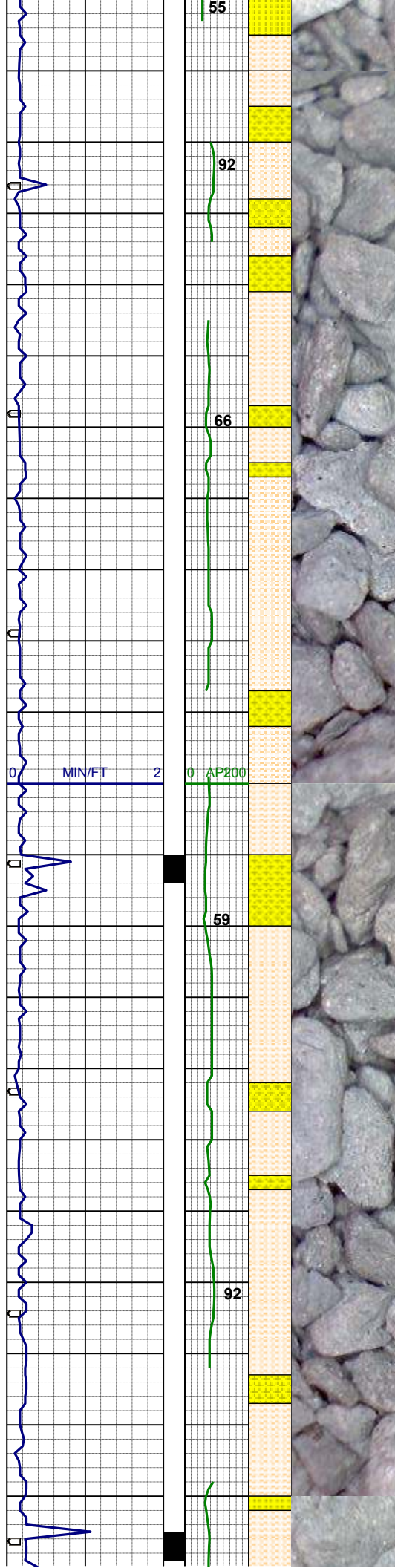
SHYSLTST: lt-modgy, occ dkgy, sft-firm, f-vfgr, sbblky-sbply, modsrt, arg mtz, slcalc  
SS: wh- ltgy, sme bf, clr- trnsi, m-fgr, sft- sl firm, blk- sbblky, w srt, p cmt, sil- slarg mtz, mod calc, slmica, tr glau, grdg- SHYSS: ltgy-mgy, trnsi- op, sft-firm, sbblky-sbply, mod srt, sil- arg mtz, sl calc

MD 1569'  
INC 1.2°  
AZI 99.1°  
TVD 1568.9'

SHYSLTST: lt-modgy, occ dkgy, sft-firm, f-vfgr, sbblky-sbply, modsrt, arg mtz, slcalc  
SS: wh- ltgy, sme bf, clr- trnsi, m-fgr, sft- sl firm, blk- sbblky, w srt, p cmt, sil- slarg mtz, mod calc, slmica, tr glau, grdg- SHYSS: ltgy-mgy, trnsi- op, sft-firm, sbblky-sbply, mod srt, sil- arg mtz, sl calc

MD 1664'  
INC 0.9°  
AZI 88.0°  
TVD 1663.9'

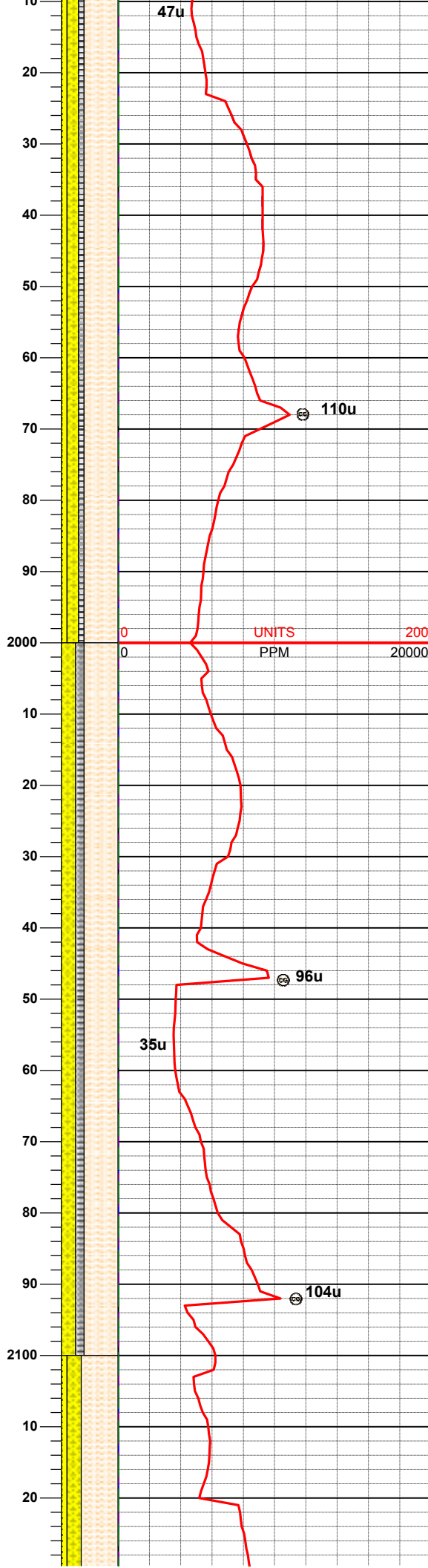
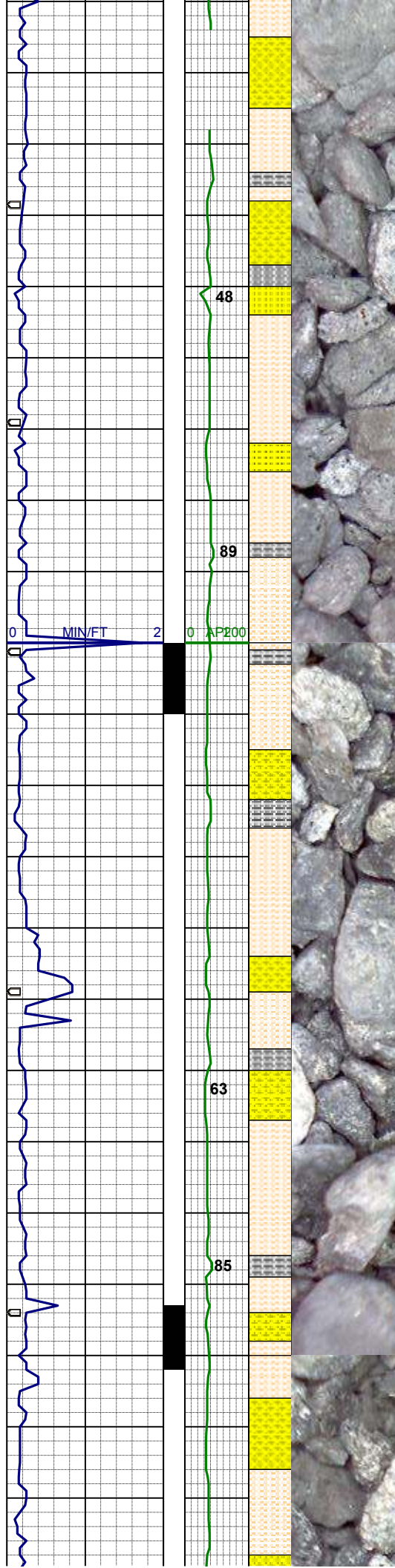




SHYSLTST: lt-modgy, occ dkgy, sft-  
firm, f-vfgr, sbblky-sbplty, modsrt, arg  
mtx, slcalc, grdg-sltysht  
SHYSS: ltgy-mgy, trnsl-op, sft-firm,  
sbblky-sbplty, mod srt, sil-arg mtx, tr  
glauca, sl calc

MD 1759'  
INC 0.7°  
AZI 82.8°  
TVD 1758.9'

SHYSLTST: tan-lt-modgy, occ dkgy,  
sft-firm, f-vfgr, sbblky-sbplty, modsrt,  
arg mtx, slcalc, grdg-siltysh  
SHYSS: ltgy-mgy, trnsl- op, sft-firm,  
sbblky-sbplty, mod srt, sil-arg mtx, tr  
glauc, sl calc



SHYSLTST: tan-lt-modgy, occ dkgy,  
sft-firm, f-vfgr, sbblky-sbplty, modsrt,  
arg mtx, slcalc, grdg-sltys  
SHYSS: ltgy-mgy, trnsi- op, sft-firm,  
sbblky-sbplty, mod srt, sil-arg mtx, tr  
glauc, sl calc  
SS: wh- ltgy, sme bf, clr- trnsi, m-fgr,  
sft- sl firm, blky-sbblky, w srt, p cmt,  
sil- slarg mtx, mod calc, slmica, tr glau  
SLTYSH: mgy-dkgy, sft-firm, f-vfgr,  
sbplty-plty, wsrt, sl calc

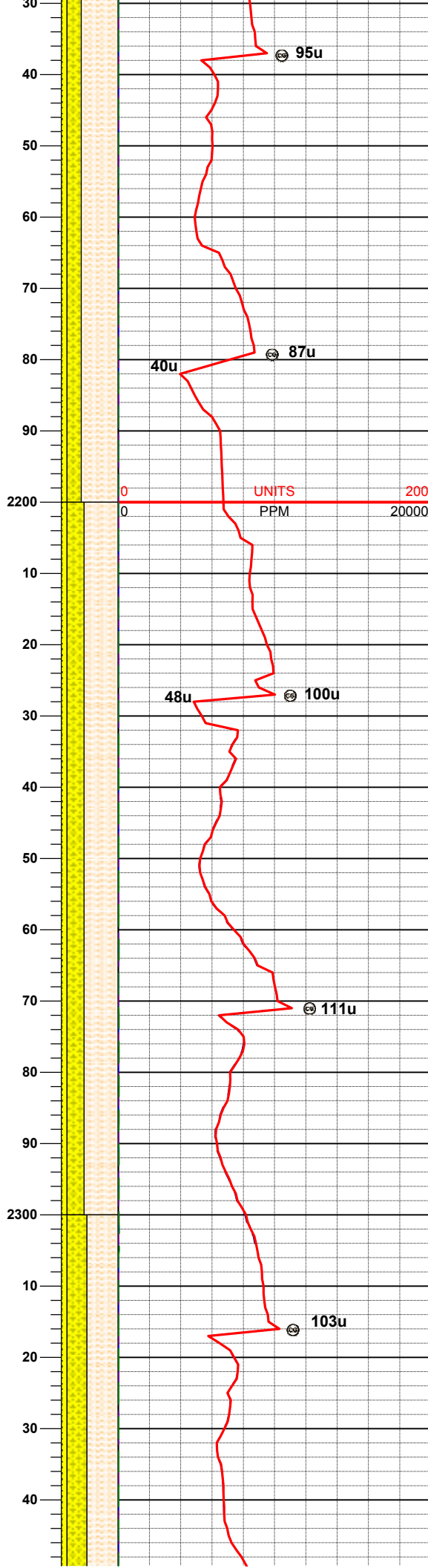
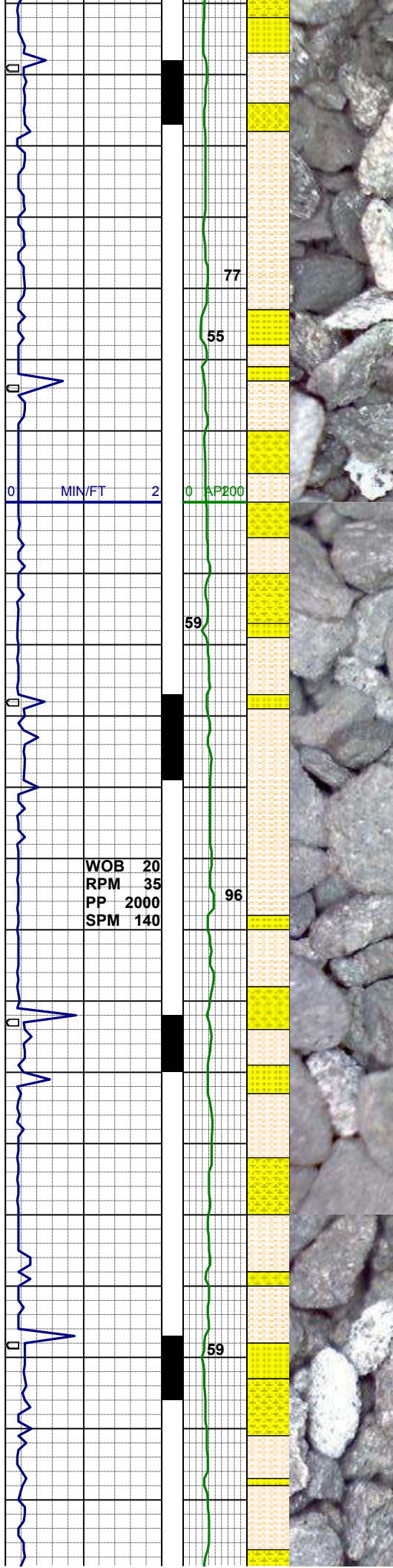
MD 1949'  
INC 2.2°  
AZI 345.7°  
TVD 1948.8'

SHYSLTST: tan-lt-modgy, occ dkgy,  
sft-firm, f-vfgr, sbblky-sbplty, modsrt,  
arg mtx, slcalc  
SHYSS: ltgy-mgy, trnsi- op, sft-firm,  
sbblky-sbplty, mod srt, sil-arg mtx, tr  
glauc, sl calc, grdg-ss, tr ss  
SLTYSH: mgy-dkgy, sft-firm, f-vfgr,  
sbplty-plty, wsrt, sl calc

WT 8.4 / VIS 30

MD 2132'





MD 2132'  
INC 2.6°  
AZI 30.4°  
TVD 2131.7'

SHYSLTST: tan-lt-modgy, tr dkgy, sft-firm, f-vfgr, sbblky-sbply, modsrt, arg mtz, sdy ip, slcalc, grdg-sltys  
SHYSS: ltgy-mgy, trnsi- op, sft-firm, sbblky-sbply, mod srt, sil-arg mtz, tr glauc, sl calc  
SS: wh- ltgy, sme bf, clr- trnsi, m-fgr, sft- sl firm, blk- sbblky, w srt, p cmt, sil- slarg mtz, mod calc, slmica, tr glau

MD 2222'  
INC 3.0°  
AZI 23.7°  
TVD 2221.6'

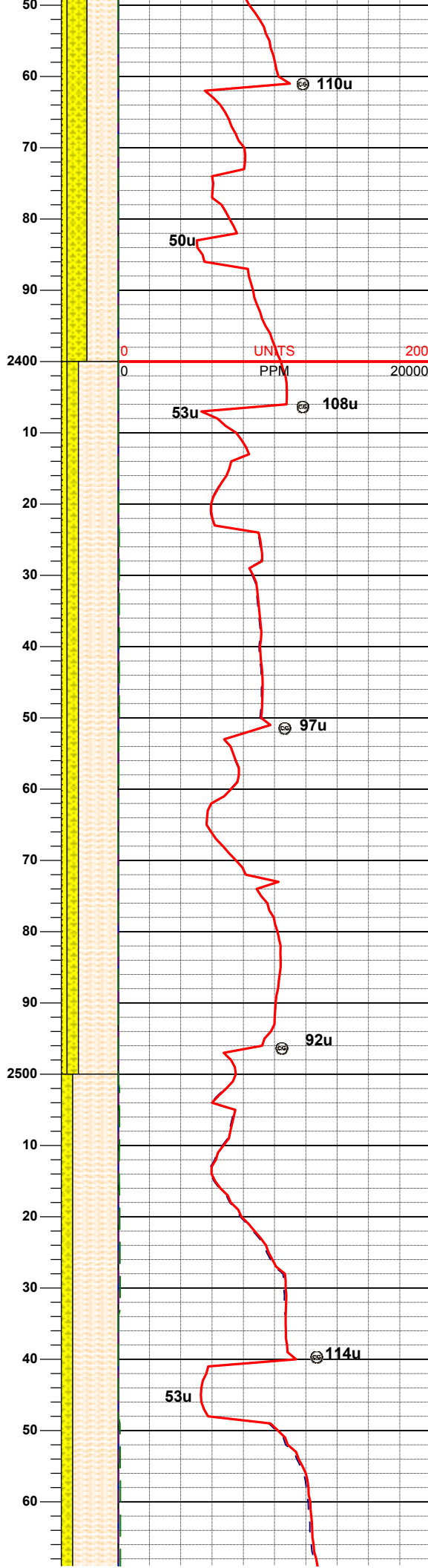
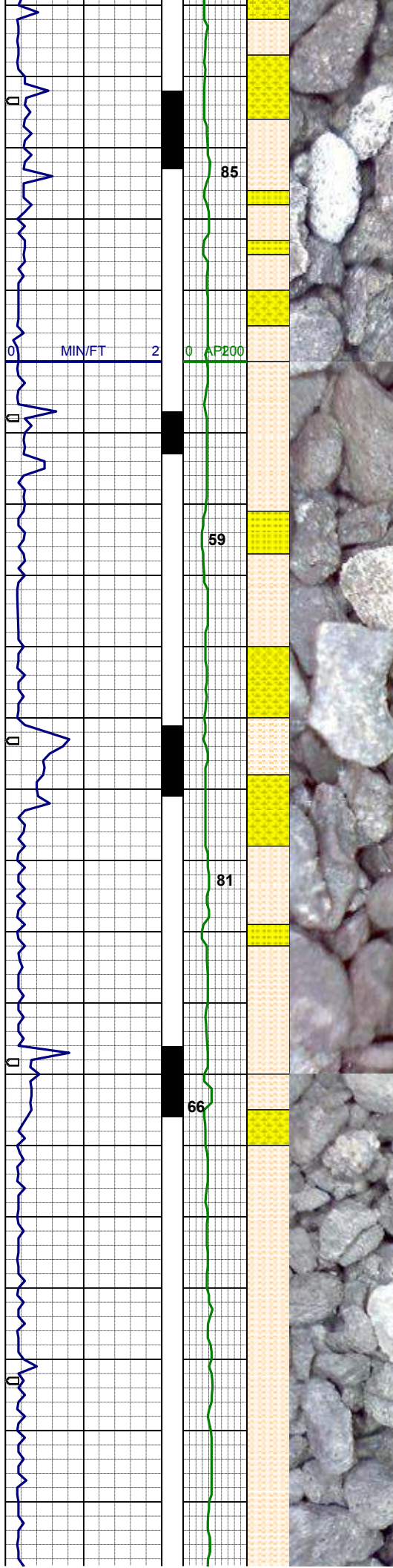
WT 8.45 / VIS 30

SHYSLTST: tan-lt-modgy, tr dkgy, sft-firm, f-vfgr, sbblky-sbply, modsrt, arg mtz, sdy ip, slcalc, grdg-sltys  
SHYSS: ltgy-mgy, trnsi- op, sft-firm, sbblky-sbply, mod srt, sil-arg mtz, tr glauc, sl calc  
SS: wh- ltgy, sme bf, clr- trnsi, m-fgr, sft- sl firm, blk- sbblky, w srt, p cmt, sil- slarg mtz, mod calc, slmica, tr glau

MD 2312'  
INC 4.1°  
AZI 34.2°  
TVD 2311.4'

SHYSLTST: tan-lt-modgy, tr dkgy, sft-firm, f-vfgr, sbblky-sbply, modsrt, arg mtz, sdy ip, slcalc, grdg-sltys  
SHYSS: ltav-mav, trnsi- op, sft-firm.





ssblky-sbply, mod srt, sil-arg mtx, tr glauc, sl calc  
SS: wh- ltgy, sme bf, clr- trnsi, m-fgr, sft- sl firm, blk-ssbly, w srt, p cmt, sil- slarg mtx, mod calc, slmica, tr glau

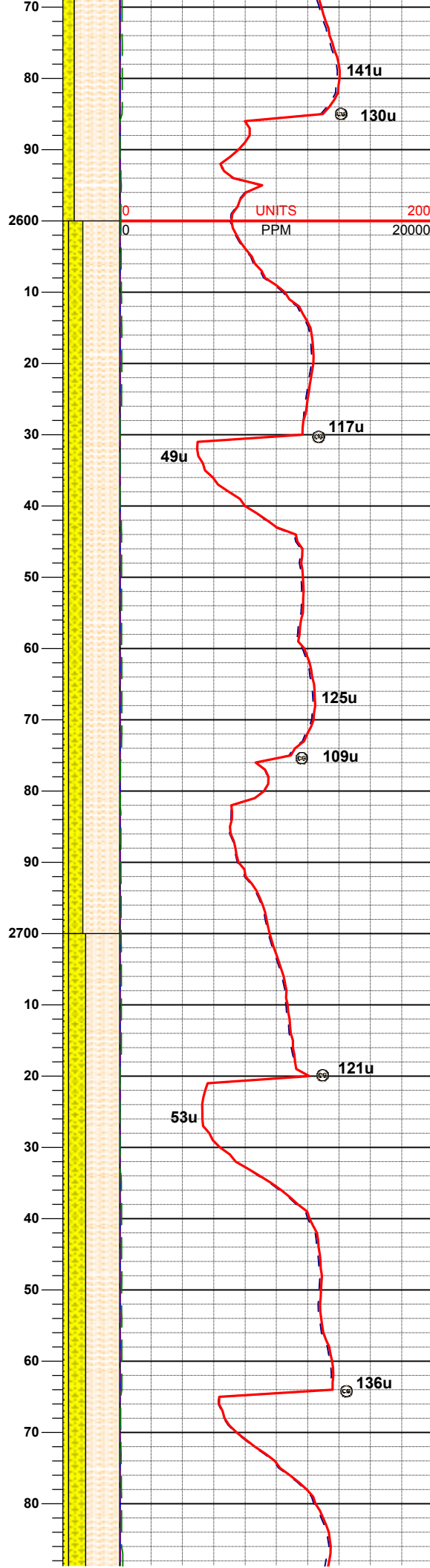
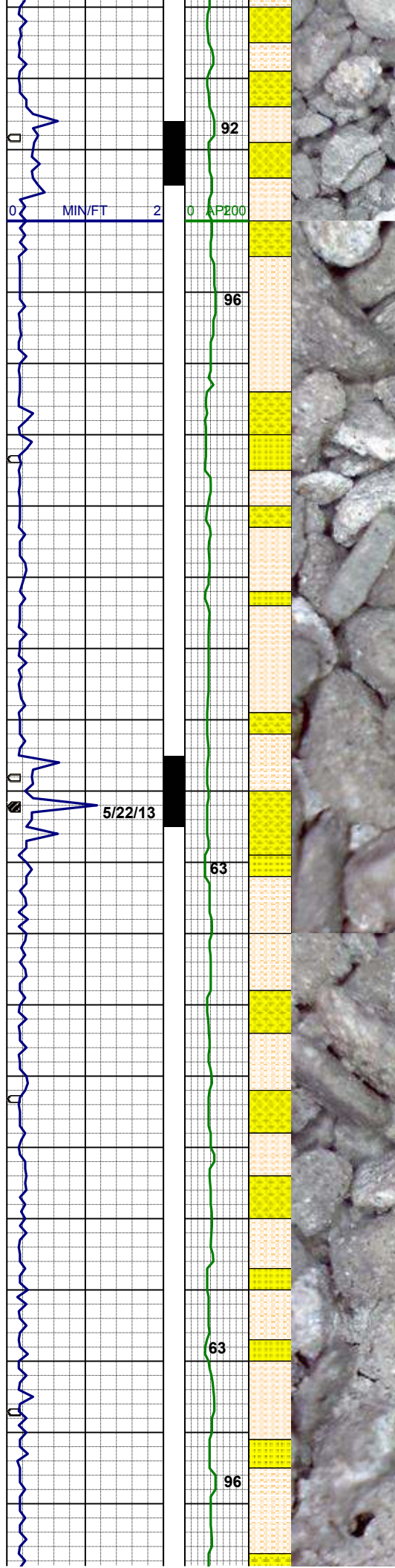
MD 2402'  
INC 7.3°  
AZI 37.6°  
TVD 2401.0'

WT 8.65 / VIS 29

SHYSLTST: tan-lt-modgy, tr dkgy, sft-firm, f-vfgr, ssblky-sbply, modsrt, arg mtx, sdy ip, slcalc, grdg-slysh  
SHYSS: ltgy-mgy, trnsi- op, sft-firm, ssblky-sbply, mod srt, sil-arg mtx, tr glauc, sl calc  
SS: wh- ltgy, sme bf, clr- trnsi, m-fgr, sft- sl firm, blk-ssbly, w srt, p cmt, sil- slarg mtx, mod calc, slmica, tr glau

MD 2491'  
INC 8.2°  
AZI 22.8°  
TVD 2489.2'

SHYSLTST: tan-lt-modgy, occ dkgy, sft-firm, f-vfgr, ssblky-sbply, modsrt, arg mtx, sdy ip, slcalc, grdg-slysh, occ slysh  
SHYSS: ltgy-mgy, trnsi- op, sft-firm, ssblky-sbply, mod srt, sil-arg mtx, tr glauc, sl calc



MD 2581'  
INC 8.5°  
AZI 13.3°  
TVD 2578.2'

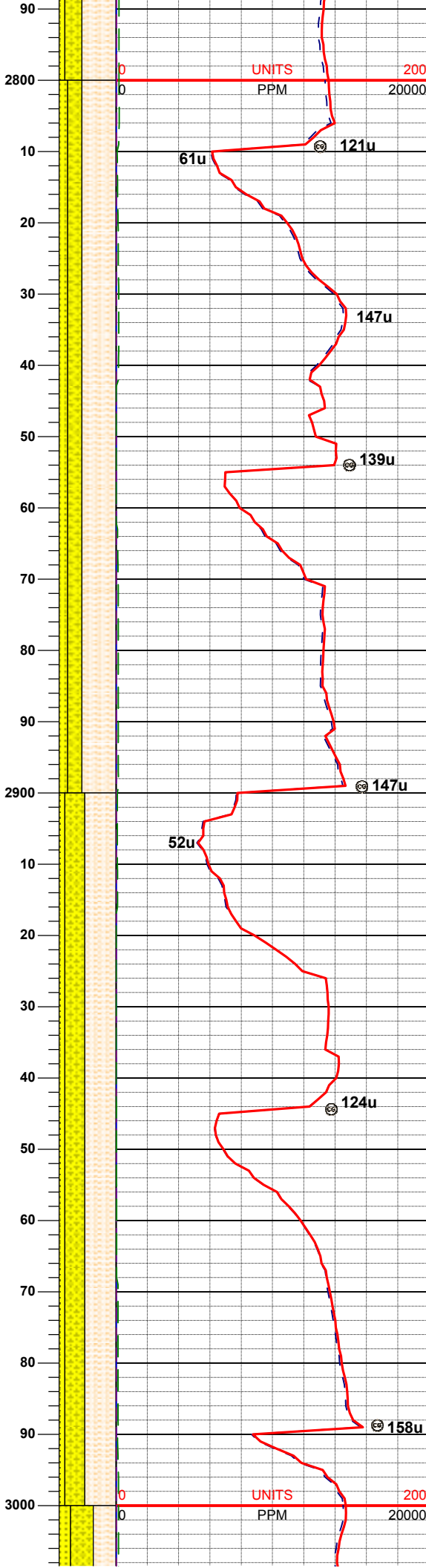
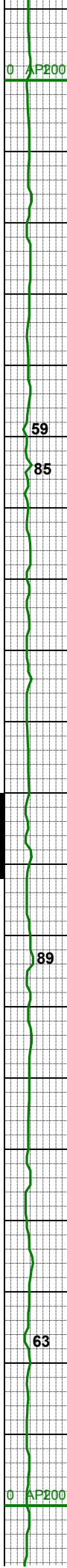
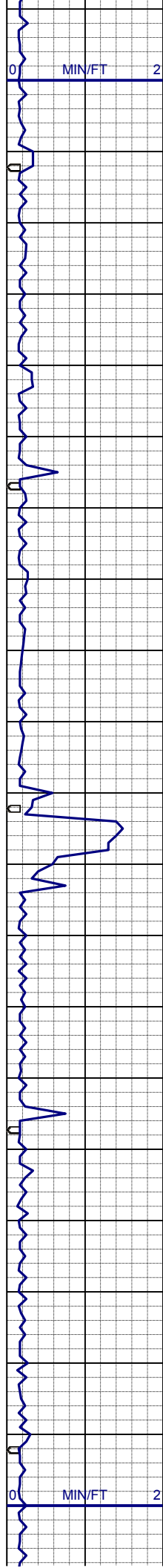
SHYSLTST: tan-lt-modgy, occ dkgy, sft-firm, f-vfgr, sbblky-sbplty, modsrt, arg mtx, sdy ip, slcalc, grdg-sltys, occ sltysh  
SHYSS: ltgy-mgy, trnsi- op, sft-firm, sbblky-sbplty, mod srt, sil-arg mtx, sl calc  
SS: wh- ltgy, sme bf, clr- trnsi, m-fgr, sft- sl firm, blky-sbblky, mod srt, sil-slarg mtx, sl calc

MD 2671'  
INC 9.0°  
AZI 0.7°  
TVD 2667.2'

SHYSLTST: tan-lt-modgy, occ dkgy, sft-firm, f-vfgr, sbblky-sbplty, modsrt, arg mtx, sdy ip, slcalc, grdg-sltys, occ sltysh  
SHYSS: ltgy-mgy, trnsi- op, sft-firm, sbblky-sbplty, mod srt, sil-arg mtx, sl calc  
SS: wh- ltgy, sme bf, clr- trnsi, m-fgr, sft- sl firm, blky-sbblky, mod srt, sil-slarg mtx, sl calc

MD 2761'  
INC 8.4°  
AZI 351.2°  
TVD 2756.1'





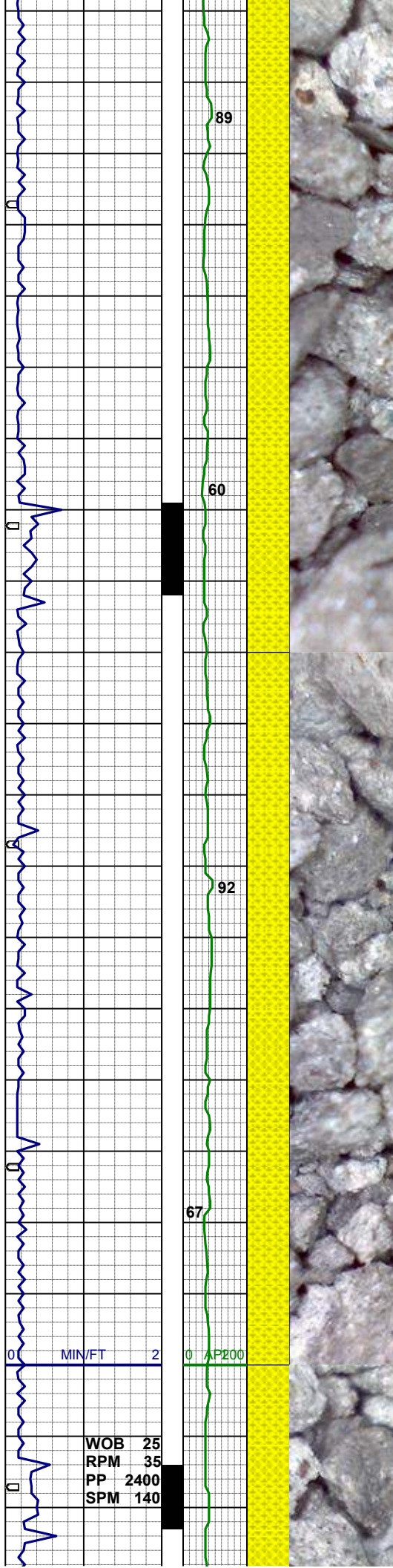
WT 8.6 / VIS 31

MD 2851'  
INC 8.4°  
AZI 347.0°  
TVD 2845.2'

SHYSLTST: tan-lt-modgy, occ dkgy, sft-firm, f-vfgr, sbblky-sbply, modsrt, arg mtx, sdy ip, slcalc, grdg-sltysh, occ sltysh  
SHYSS: ltgy-mgy, trnsi- op, sft-firm, sbblky-sbply, mod srt, sil-arg mtx, sl calc  
SS: wh- ltgy, clr- trnsi, m-fgr, sft- sl firm, blk- sbblky, mod srt, sil- slarg mtx, sl calc

MD 2941'  
INC 7.4°  
AZI 340.1°  
TVD 2934.3'

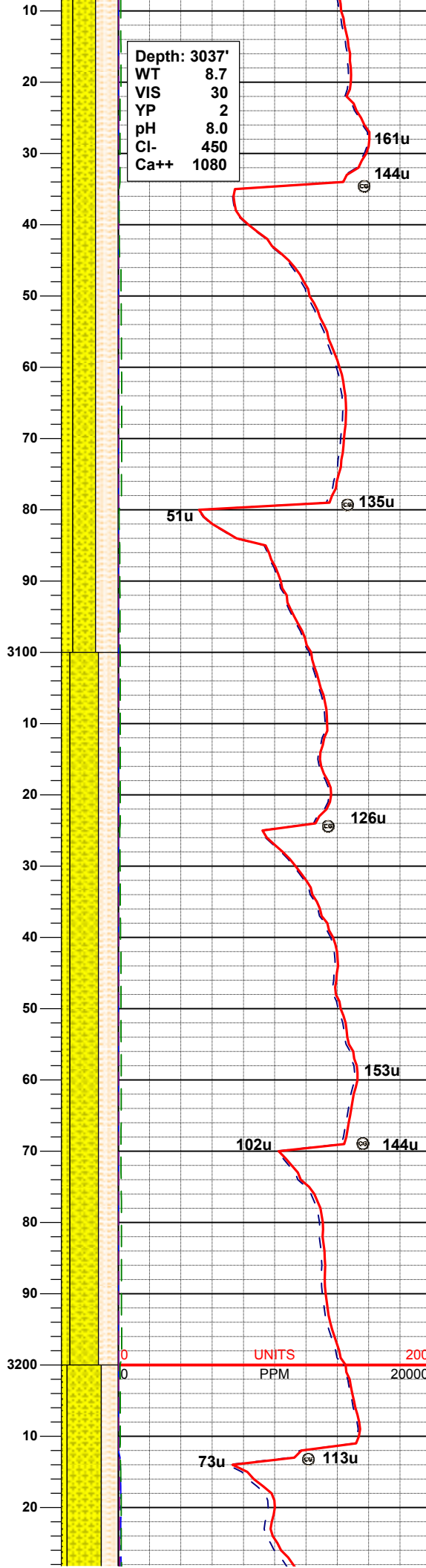
SHYSLTST: tan-lt-modgy, occ dkgy, sft-firm, f-vfgr, sbblky-sbply, modsrt, arg mtx, sdy ip, slcalc, grdg-sltysh, occ sltysh  
SHYSS: ltgy-mgy, trnsi- op, sft-firm, sbblky-sbply, mod srt, sil-arg mtx, sl calc  
SS: wh- ltgy, clr- trnsi, m-fgr, sft- sl firm, blk- sbblky, mod srt, sil- slarg mtx, sl calc



Depth: 3037'  
WT 8.7  
VIS 30  
YP 2  
pH 8.0  
Cl- 450  
Ca++ 1080

MD 3030'  
INC 6.9°  
AZI 337.5°  
TVD 3022.6'

SHYSLTST: tan-lt-modgy, occ dkgy, sft-firm, f-vfgr, sbblky-sbply, modsrt, arg mtx, sdy ip, slcalc, grdg-sltys, occ sltysh  
SHYSS: ltgy-mgy, trnsi- op, sft-firm, sbblky-sbply, mod srt, sil-arg mtx, sl calc  
SS: wh- ltgy, clr- trnsi, m-fgr, sft- sl firm, blk- sbblky, mod srt, sil- slarg mtx, sl calc, mica, tr glau

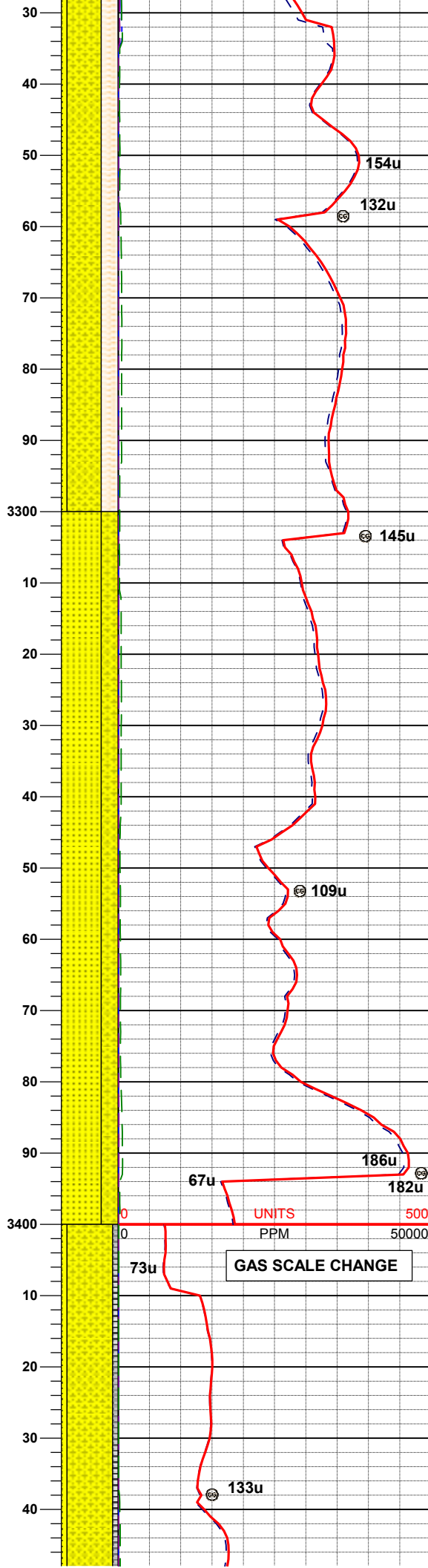
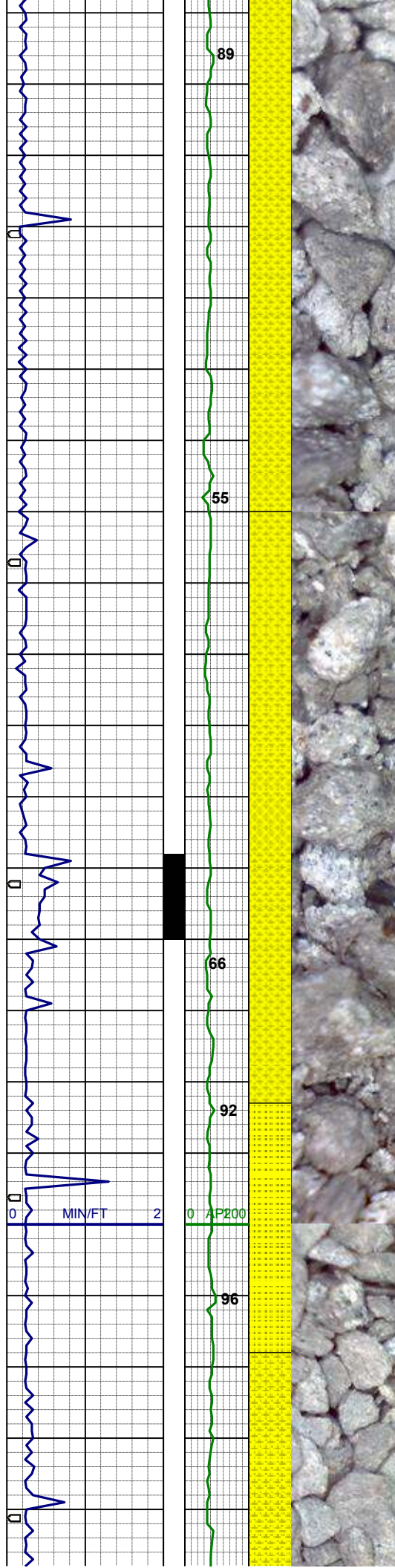


MD 3120'  
INC 6.6°  
AZI 353.3°  
TVD 3112.0'

SHYSS: ltgy-mgy, trnsi- op, sft-firm, sbblky-sbply, mod srt, sil-arg mtx, sl calc  
SHYSLTST: tan-lt-modgy, occ dkgy, sft-firm, f-vfgr, sbblky-sbply, modsrt, arg mtx, sdy ip, slcalc, grdg-sltys, occ sltysh  
SS: wh- ltgy, clr- trnsi, m-fgr, sft- sl firm, blk- sbblky, mod srt, sil- slarg mtx, sl calc, mica, tr glau

MD 3210'  
INC 6.1°  
AZI 348.4°  
TVD 3201.5'





SHYSS: ltgy-mgy, trns- op, sft-firm, sbblky-sbply, mod srt, sil-arg mtx, sl calc  
SHYSLTST: tan-lt-modgy, occ dkgy, sft-firm, f-vfgr, sbblky-sbply, modsrt, arg mtx, sdy ip, slcalc, grdg-sltys, occ sltysh  
SS: wh- ltgy, clr- trns- l, m-fgr, sft- sl firm, blk- sbblky, mod srt, sil- slarg mtx, sl calc, mica, tr glau

MD 3300'  
INC 6.5°  
AZI 337.8°  
TVD 3290.9'

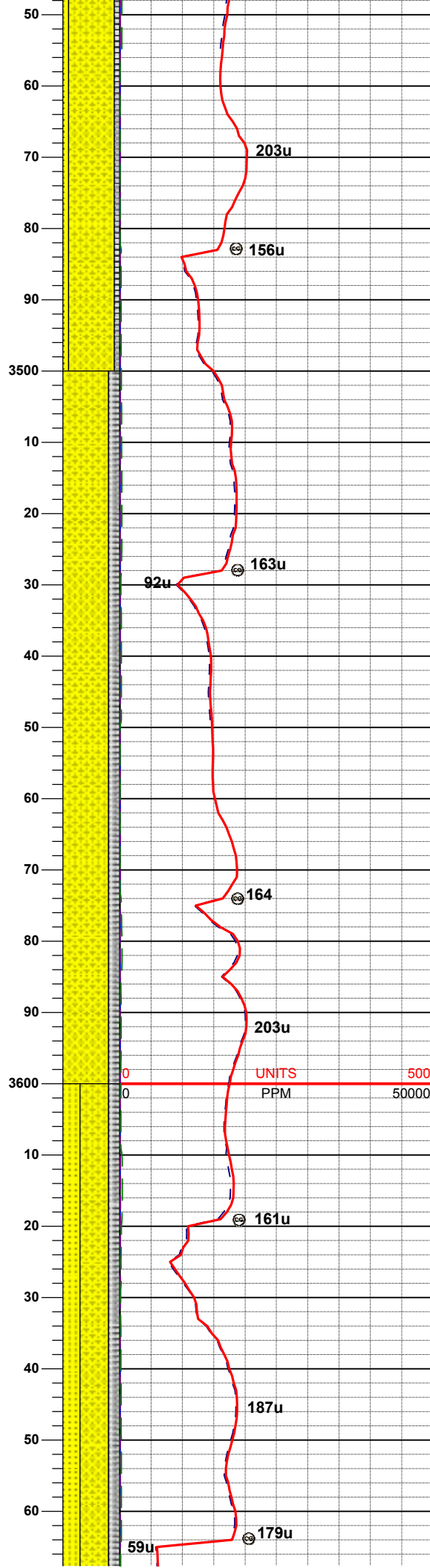
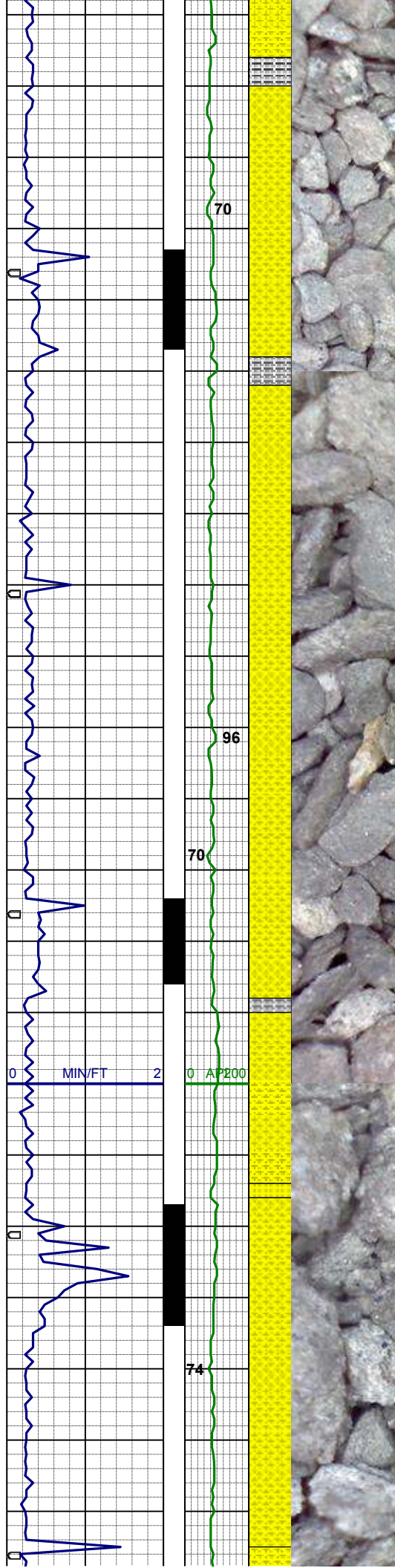
SS: wh- ltgy, clr- trns- op, m-fgr, firm, sbblky, mod srt, mod cmt, sil- arg mtx, mod calc, grdg- SHYSS: ltgy-mgy, trns- op, mod firm, sbblky-sbply, mod srt, sil-arg mtx, sl calc, tr pyr, sl mica

MD 3390'  
INC 7.1°  
AZI 342.9°  
TVD 3380.3'

WT 8.7 / VIS 30

UNITS  
PPM  
GAS SCALE CHANGE

SHYSS: ltgy-mgy, trns- op, mod firm, sbblky-sbply, mod srt, sil-arg mtx, sl calc, grdg- sltysh  
SS: ltgy, clr- trns- op, m-fgr, firm, sbblkv. mod srt, mod cmt, sil- ara mtx.



mod calc

MD 3480'  
INC 5.2°  
AZI 345.5°  
TVD 3469.8'

WT 8.55 / VIS 32

SHYSS: ltgy-mgy, trns- op, mod firm, sbbiky-sbply, mod srt, sil-arg mtx, sl calc, grdg- sltysh

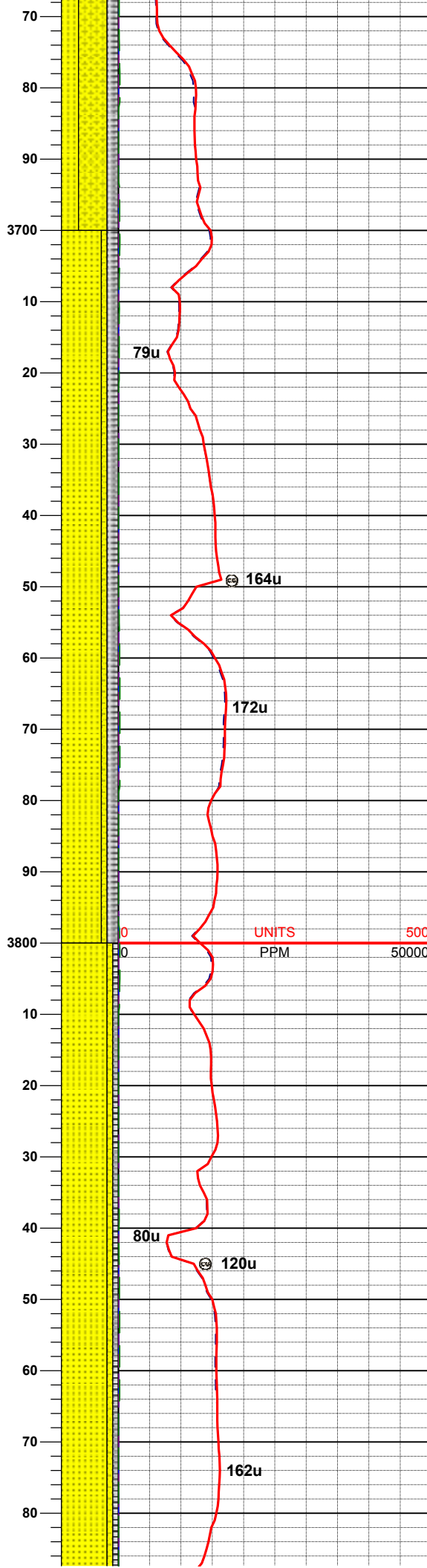
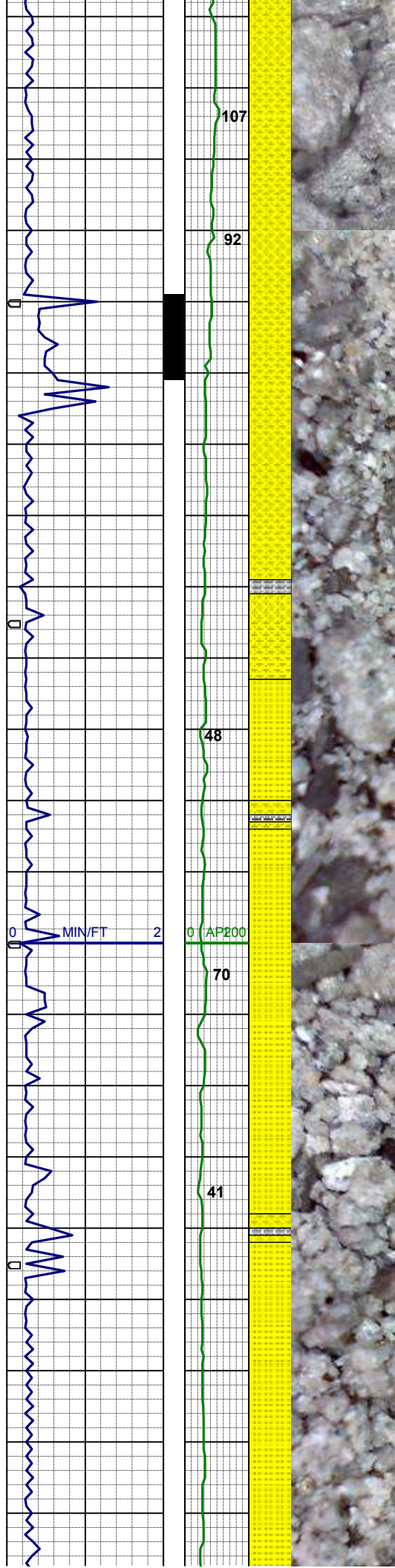
MD 3570'  
INC 4.7°  
AZI 355.9°  
TVD 3559.4'

SHYSS: ltgy-mgy, occ dkgy, trns- op, mod firm, sbbiky-sbply, mod srt, sil-arg mtx, sl calc, tr pyr clus, grdg- sltysh  
SS: ltgy, clr- trns- op, m-fgr, firm, sbbiky, mod srt, mod cmt, sil- arg mtx, mod calc

MD 3659'  
INC 6.3°  
AZI 351.0°  
TVD 3648.0'

WT 8.6 / VIS 32



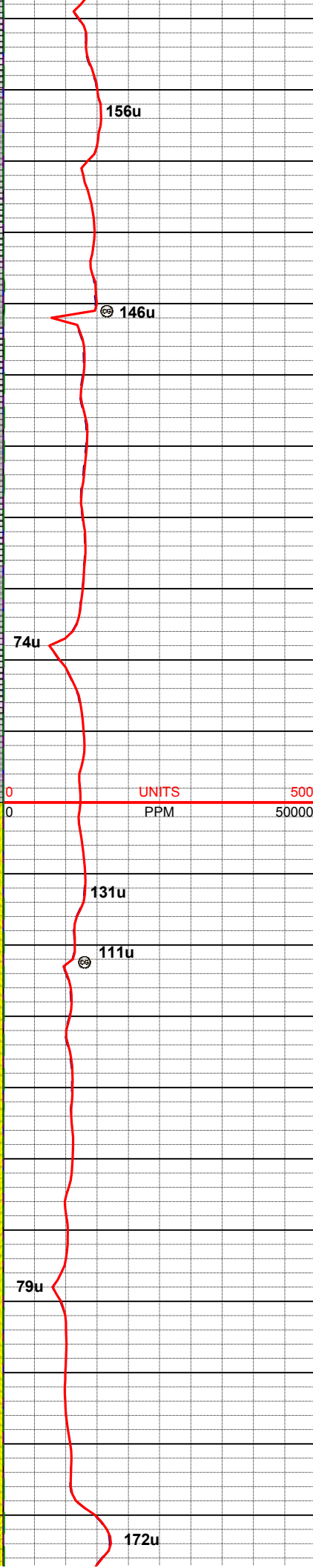
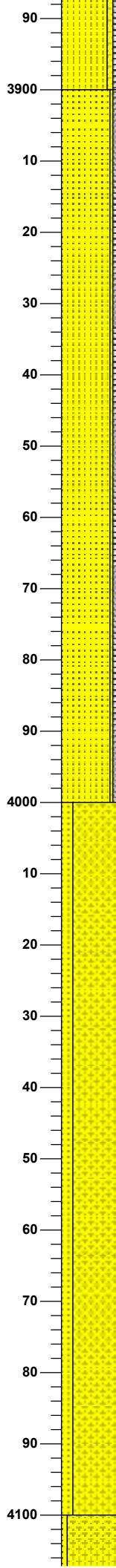
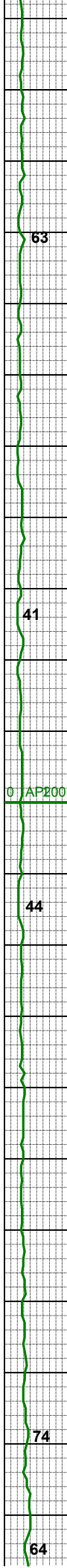
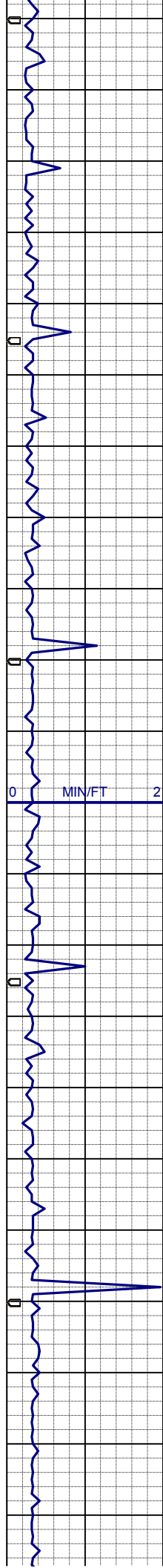


SS: wh- ltgy, clr- trns, m-fgr, lse,  
sbbiky, w srt, p cmt, pred sil mtx, mod  
calc, occ glau  
SLTYSH: m- dkgy, pred sbply, firm,  
gt tex, sl calc, sdy ip, grdg- shyss

MD 3749'  
INC 7.4°  
AZI 352.4°  
TVD 3737.4'

MD 3839'  
INC 7.6°  
AZI 355.4°  
TVD 3826.6'

SS: wh- ltgy, s&p, clr- trns, m-fgr, lse  
ip, sbbiky, w srt, p cmt, pred sil mtx,  
mod calc, occ glau  
SLTYSH: m- dkgy, pred sbply, firm,  
gt tex, sl calc, sdy ip, grdg- shyss



MD 3929'  
INC 7.8°  
AZI 355.4°  
TVD 3915.8'

WT 8.6 / VIS 32

SS: wh- ltgy, s&p, clr- trns, m-fgr, lse  
ip, sbblky, w srt, p cmt, pred sil mtx,  
mod calc, occ glau  
SLTYSH: m- dkgy, pred sbplty, firm,  
gt tex, sl calc, sdy ip, grdg- shyss

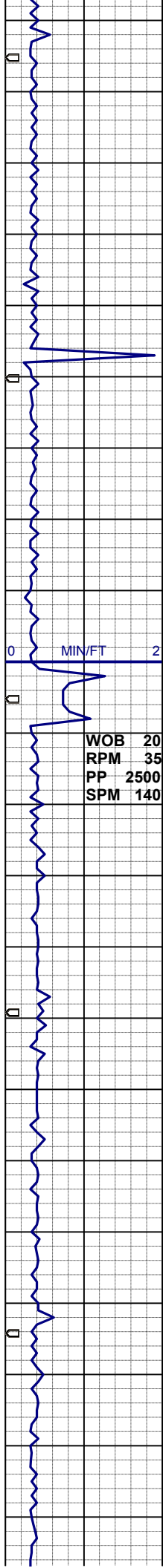
MD 4019'  
INC 8.3°  
AZI 351.9°  
TVD 4004.9'

WT 8.6 / VIS 32

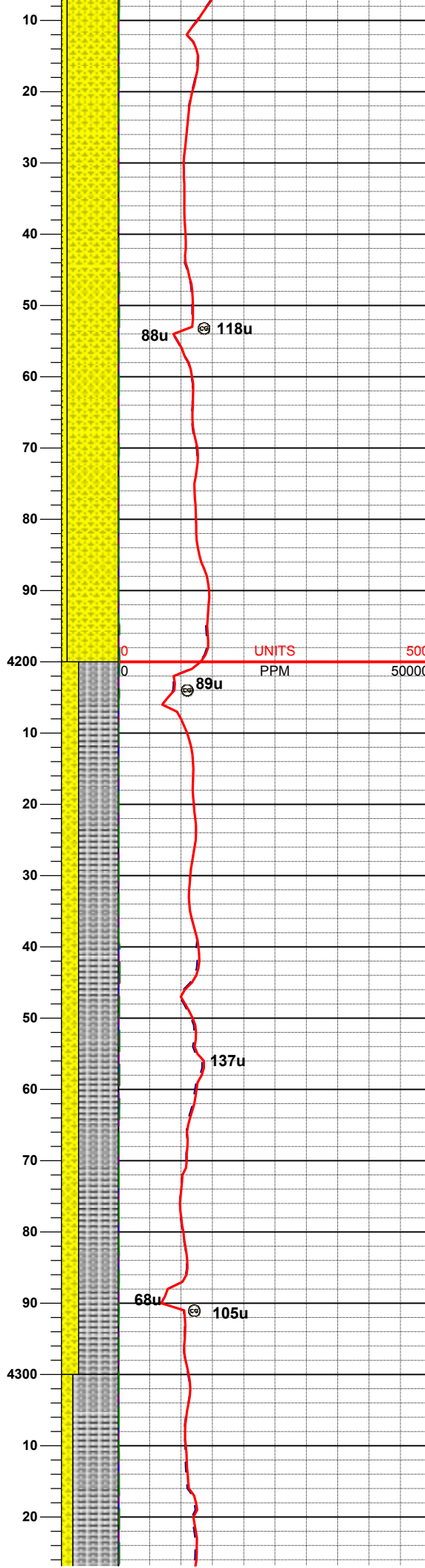
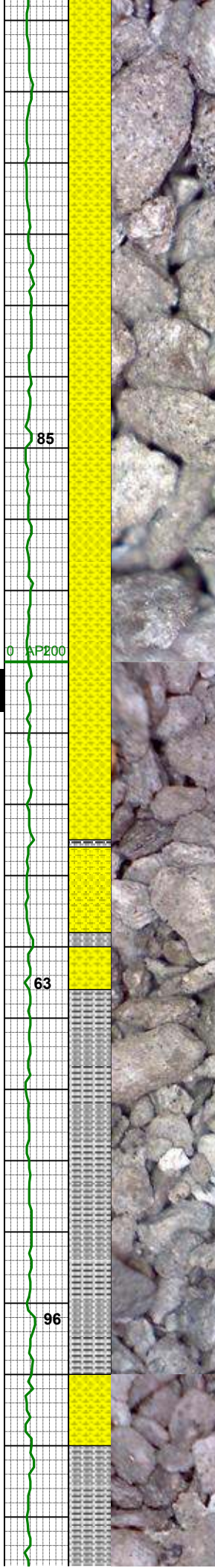
SHYSS: mgy, occ dkgy, trns- op,  
mod firm, sbblky-sbplty, mod srt, sil-  
arg mtx, sl calc, grdg- sltysh  
SS: lt- mgy, clr- trns- op, m-fgr, firm,  
sbblky, mod srt, mod cmt, sil- arg mtx,  
sl calc

MD 4109'  
INC 8.3°





WOB 20  
RPM 35  
PP 2500  
SPM 140



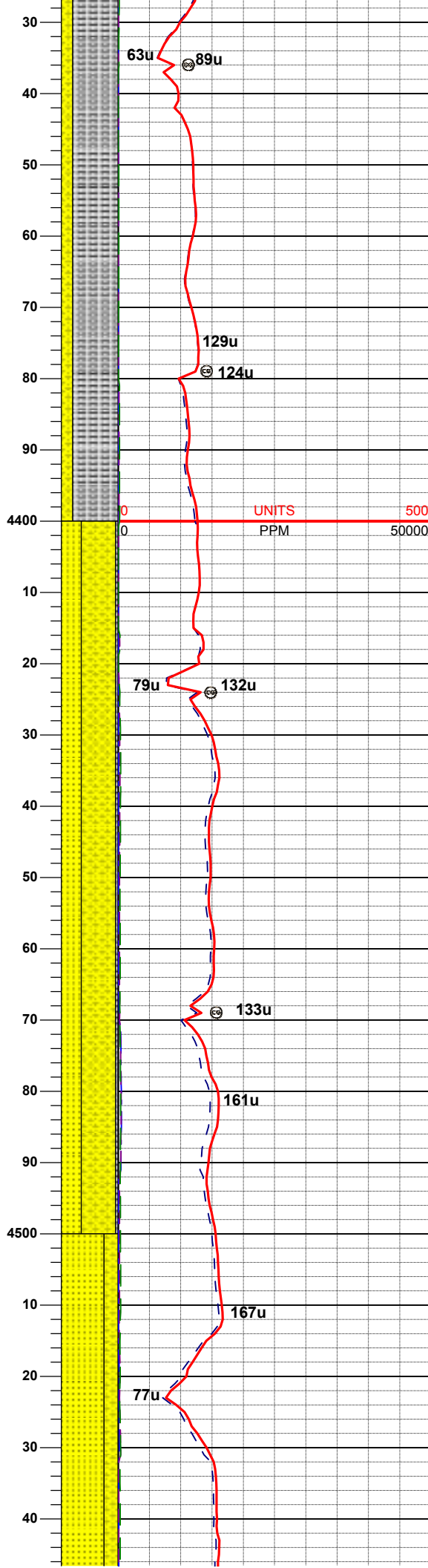
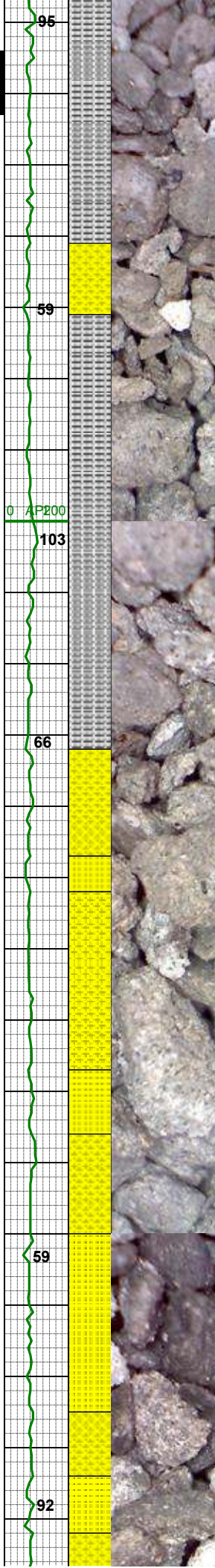
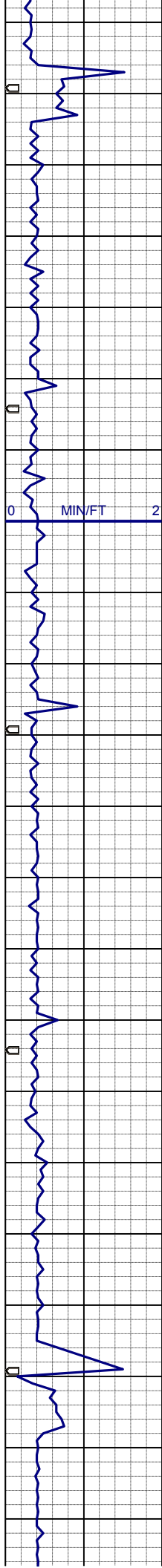
SHYSS: mgy, occ dkgy, trnsf- op,  
mod firm, sbbky-sbply, mod srt, sil-  
arg mtx, sl calc, grdg- sltysh  
SS: lt- mgy, clr- trnsf- op, m-fgr, firm,  
sbbky, mod srt, mod cmt, sil- arg mtx,  
sl calc

MD 4198'  
INC 7.4°  
AZI 350.1°  
TVD 4182.1'

WT 8.65 / VIS 31

SLTYSH: lt-mgy, sbply-sbbky, sft-  
mfirm, gt txt, sdy ip, sl calc, grdg-  
shyss

MD 4288'  
INC 6.5°  
AZI 349.2°  
TVD 4271.5'



WT 8.6 / VIS 31

SLTYSH: lt-mgy, sbply-sbply, sft-  
mfirm, gt txt, sdy ip, sl calc, grdg-  
shyss

MD 4378'  
INC 4.7°  
AZI 5.2°  
TVD 4361.0'

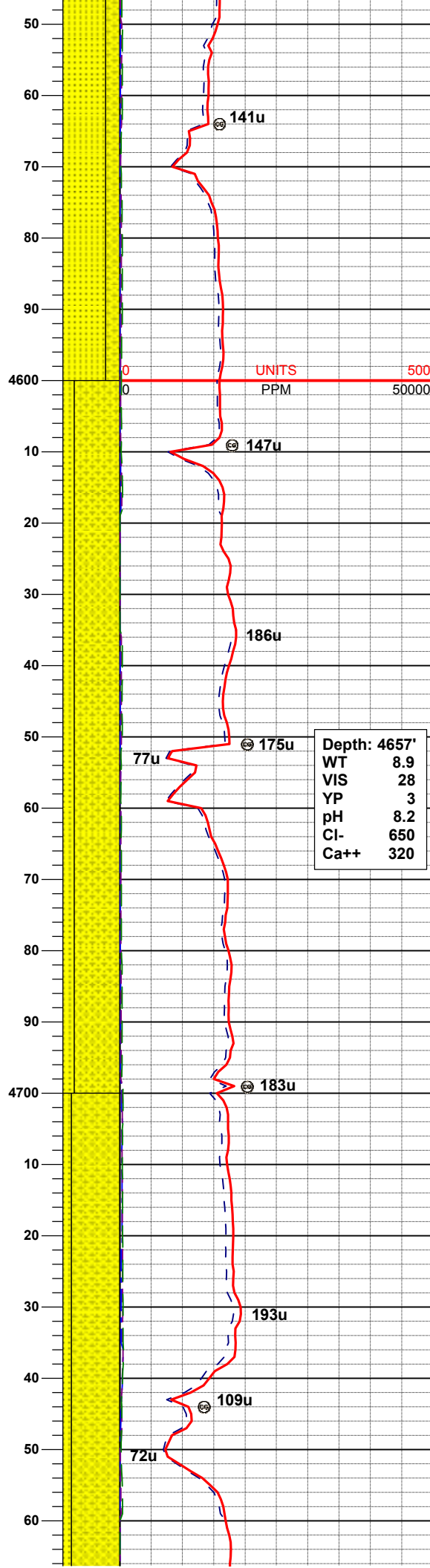
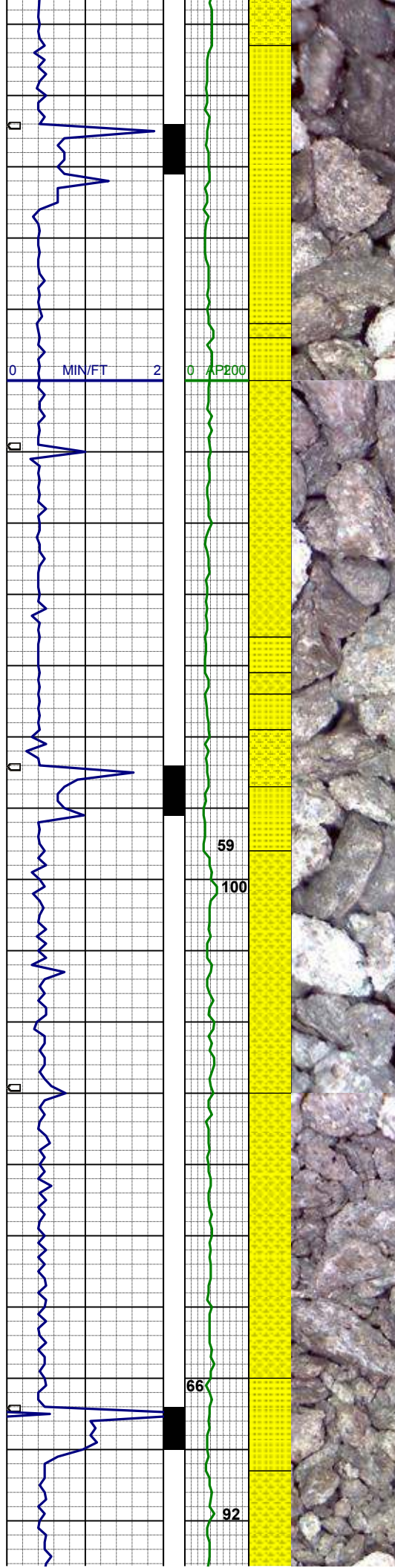
SHYSS: mgy, occ dkgy, trns- op,  
mod firm, sbply-sbply, mod srt, sil-  
arg mtx, sl calc, grdg- sltysh  
SS: mgy, clr- trns- op, m-fgr, firm,  
sbply, mod srt, mod cmt, sil- arg mtx,  
sl calc

MD 4468'  
INC 4.4°  
AZI 0.8°  
TVD 4450.8'

WT 8.6 / VIS 31

SS: - SHYSS: wh- mgy, s&p ip, clr-  
trns- op, m-fgr, arg mtx, m firm





trnsi- op, m-igr, occ vgr, m- m- m-  
sbbly- sbply, mod srt, mod cmt, sil-  
arg mtx, slty, shy, sl calc

MD 4558'  
INC 4.0°  
AZI 356.6°  
TVD 4540.5'

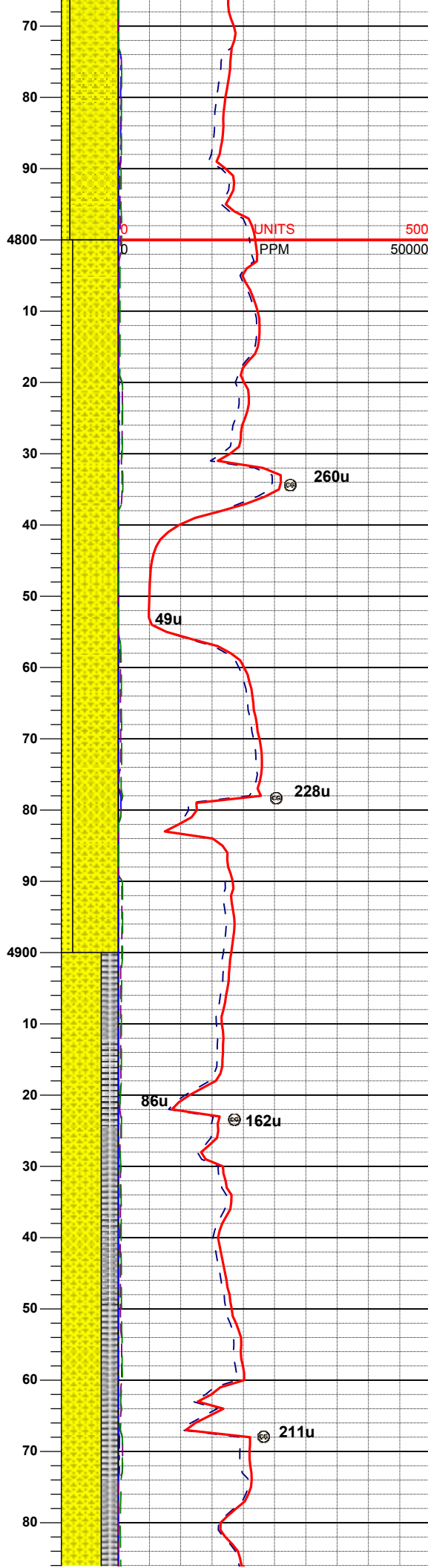
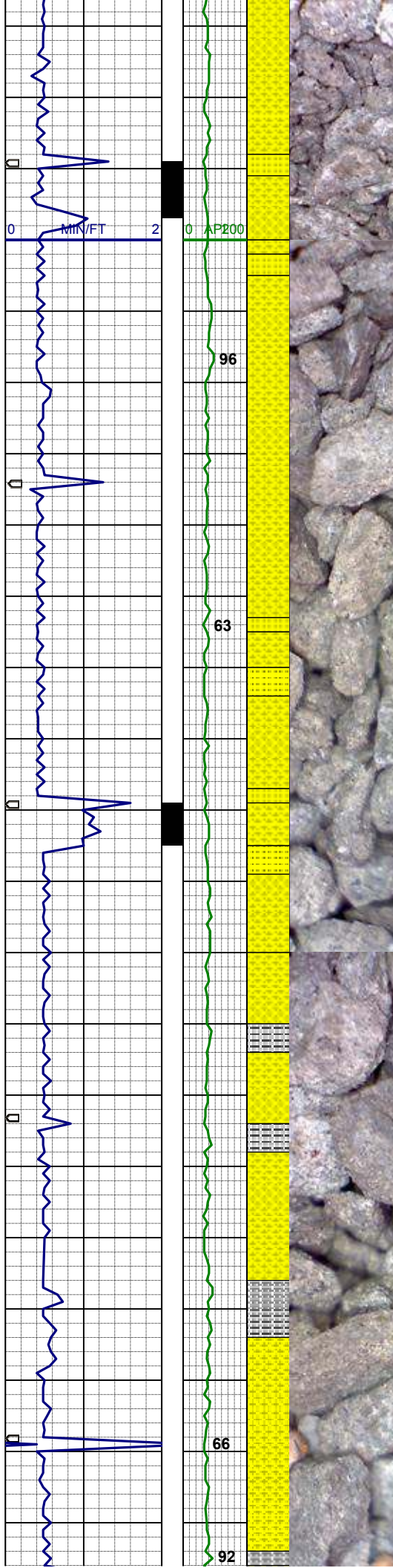
MD 4648'  
INC 3.3°  
AZI 347.8°  
TVD 4630.3'

SHYSS: mgy, occ dkgy, trnsi- op,  
mod firm, sbbly-sbply, mod srt, sil-  
arg mtx, sl calc, occ calc frag, tr pyr,  
grdg- sltysh  
SS: wh- mgy, s&p ip, clr- trnsi- op, m-  
fgr, mod firm, sbbly, mod srt, mod  
cmt, sil- arg mtx, sl calc, tr glau

WT 8.6 / VIS 30

MD 4738'  
INC 2.0°  
AZI 348.4°  
TVD 4720.2'

SHYSS: tan-mgy, occ dkgy, trnsi- op,  
f-vfgr, mod firm, sbbly-sbply, mod  
srt, sil-arg mtx, sl calc, grdg- shylst,  
tr sltysh  
SS: wh- mgy, s&p ip, clr- trnsi- op, m-  
fgr, mod firm, sbbly, mod srt, mod  
cmt, sil- arg mtx, sl calc, tr glau



MD 4828'  
INC 1.2°  
AZI 325.3°  
TVD 4810.2'

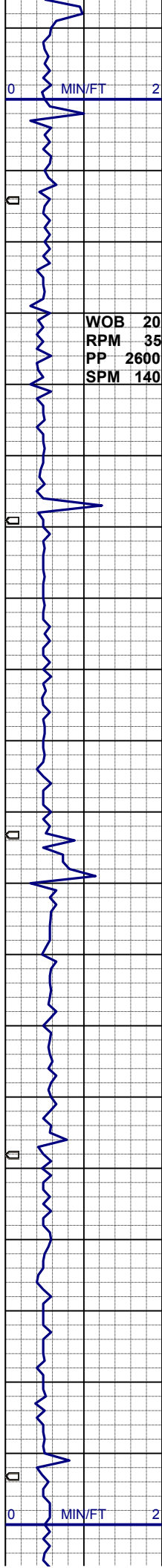
SHYSS: tan-mgy, occ dkgy, trnsi- op,  
f-vfgr, mod firm, sbblky-sbplty, mod  
srt, sil-arg mtx, sl calc, grdg- shysltst,  
tr sltysh, tr fos frag  
SS: wh- mgy, s&p ip, clr- trnsi- op, m-  
fgr, mod firm, sbblky, mod srt, mod  
cmt, sil- arg mtx, sl calc, tr glau

WT 8.8 / VIS 31

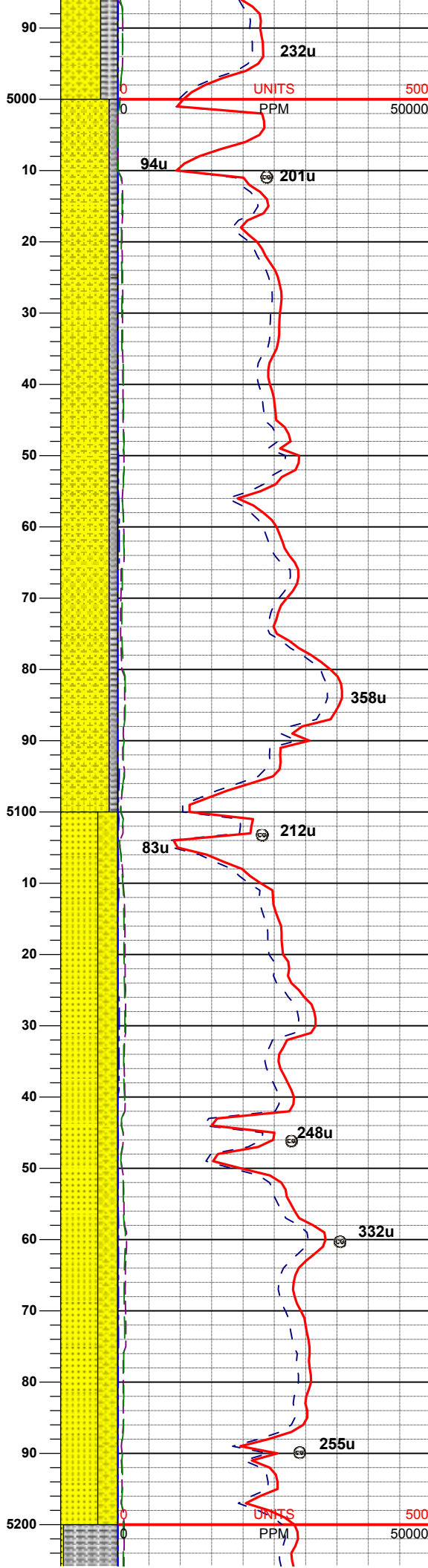
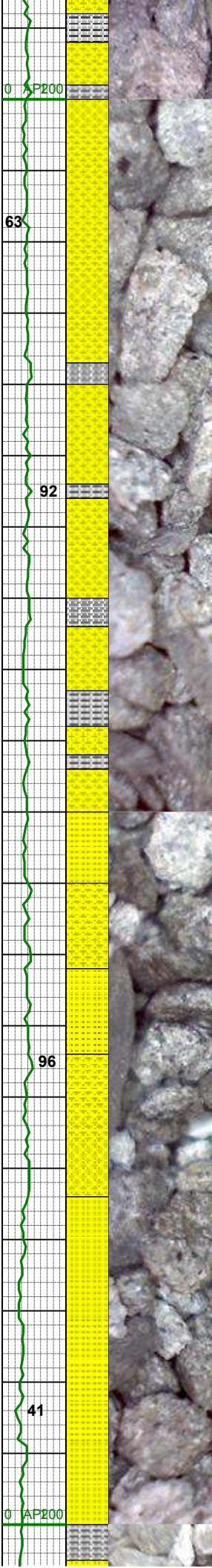
MD 4917'  
INC 0.6°  
AZI 73.6°  
TVD 4899.2'

SHYSS: tan-mgy, occ dkgy, trnsi- op,  
f-vfgr, mod firm, sbblky-sbplty, mod  
srt, sil-arg mtx, sl calc, tr shysltst, tr  
fos frag, tr wh ss  
SLTYSH: lt-mgy, sbplty-sbblky, tr plty,  
sft- mfirm, gt txt, occ sdy ip, sl calc,  
grdg- shysltst





WOB 20  
RPM 35  
PP 2600  
SPM 140



MD 5007'  
INC 0.2°  
AZI 57.1°  
TVD 4989.2'

WT 8.8 / VIS 32

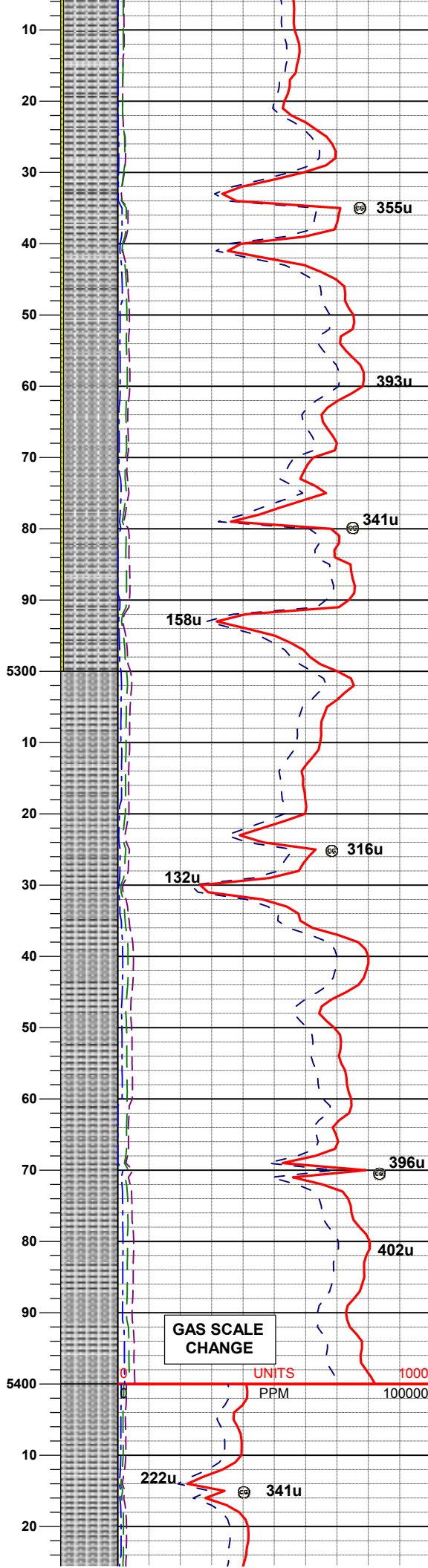
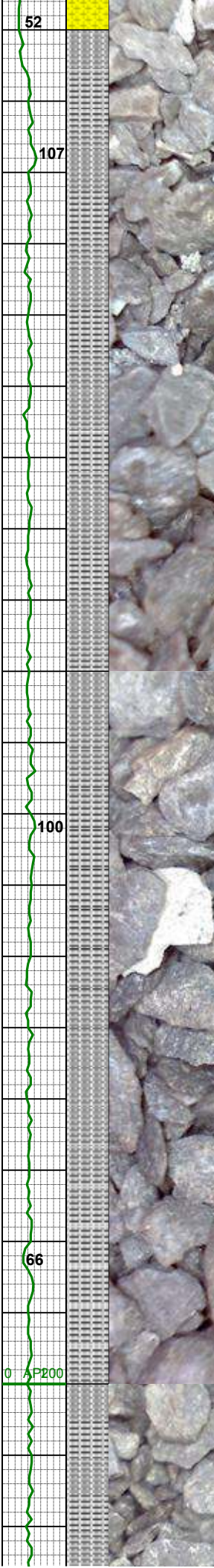
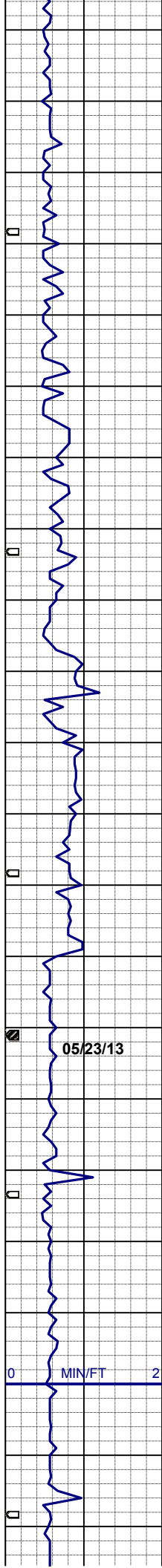
SHYSS: tan-mgy, occ dkgy, trnsl- op,  
f-vfgr, mod firm, sbblky-sbply, mod  
srt, sil-arg mtx, sl calc, tr shysltst, tr  
fos frag, tr wh ss  
SLTYSH: lt-mgy, sbply-sbblky, tr ply,  
sft- mfirm, gt txt, occ sdy ip, sl calc,  
grdg- shysltst

MD 5097'  
INC 0.3°  
AZI 333.6°  
TVD 5079.2'

SS: wh- ltgy, clr- trnsl- op, m-fgr, mod  
firm, blk- sbblky, mod srt, mod cmt,  
sil- arg mtx, sl calc, tr glau  
SHYSS: tan-mgy, occ dkgy, trnsl- op,  
f-vfgr, mod firm, sbblky-sbply, mod  
srt, sil-arg mtx, sl calc, grdg-shysltst,  
tr glau

WT 8.85 / VIS 31

MD 5187'  
INC 0.4°  
AZI 312.3°  
TVD 5169.2'



SLTYSH: lt-mgy, sbplty-sbblky, tr plty,  
sft- mfirm, gt txt, tr sdy ip, sl calc, grdg  
- shysltst, tr pyr  
SS: wh- ltgy, clr- trnsi- op, m-fgr, mod  
firm, blk- sbblky, mod srt, mod cmt,  
sil- arg mtx, sl calc, tr glau

MD 5277'  
INC 0.1°  
AZI 273.1°  
TVD 5259.2'

WT 8.9 / VIS 32

SLTYSH: lt-mgy, tr tan, sbplty-sbblky,  
tr plty, sft- mfirm, gt txt, tr sdy ip, sl  
calc, grdg- shysltst, tr pyr, tr shyss

MD 5366'  
INC 0.2°  
AZI 171.3°  
TVD 5348.2'

GAS SCALE  
CHANGE

UNITS  
PPM 100000

05/23/13

MIN/FT

0 AP200

222u

341u

355u

393u

341u

158u

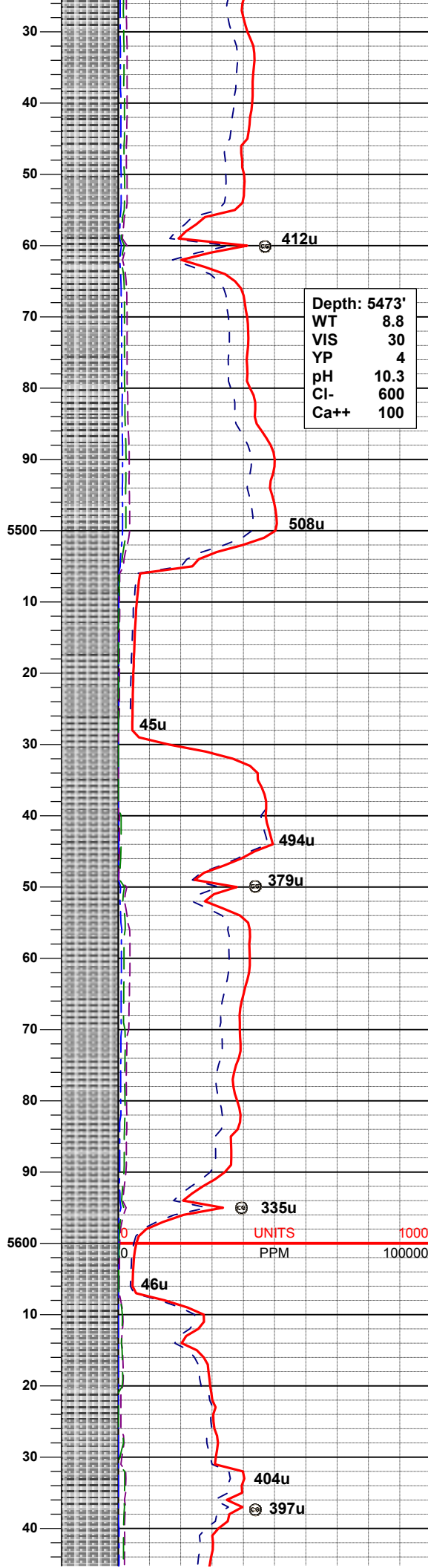
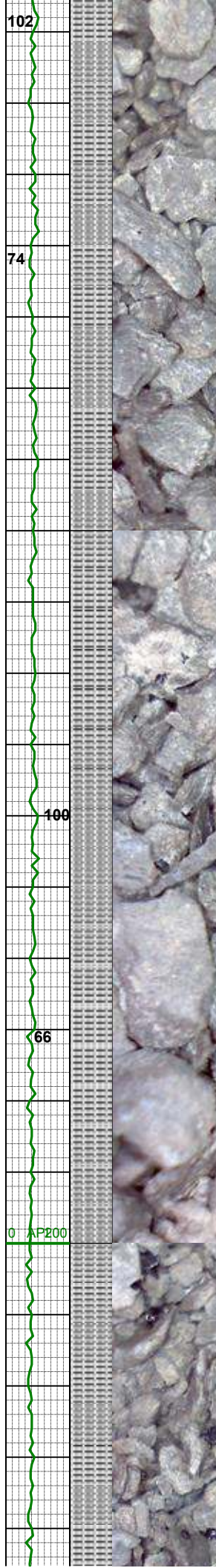
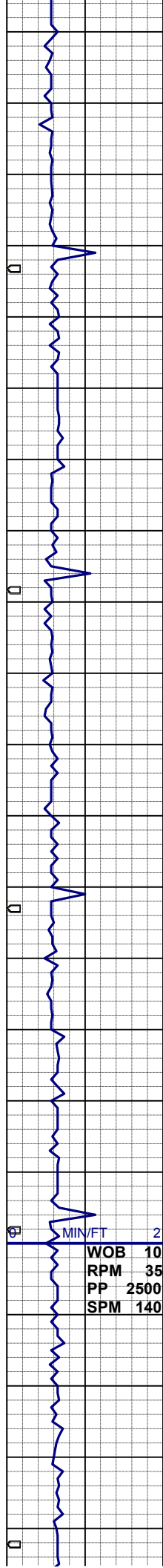
316u

132u

396u

402u





SLTYSH: lt-mgy, tr tan, sbplty-sbblky,  
tr plty, sft- mfirm, gt txt, tr sdy ip, sl  
calc, grdg- shysltst, tr pyr, tr fos frag,  
tr shyss

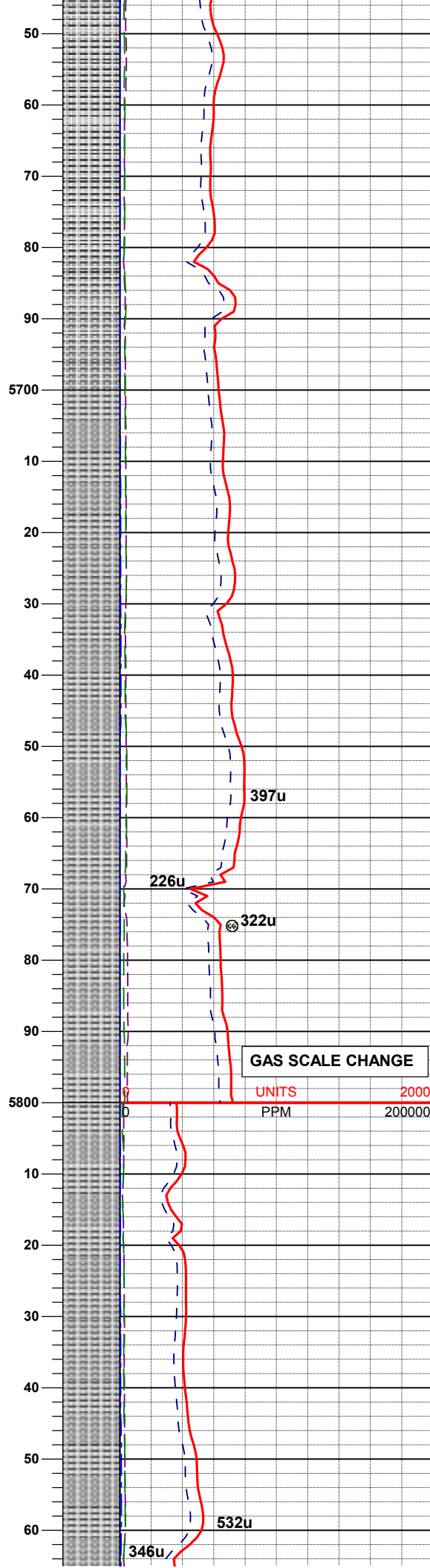
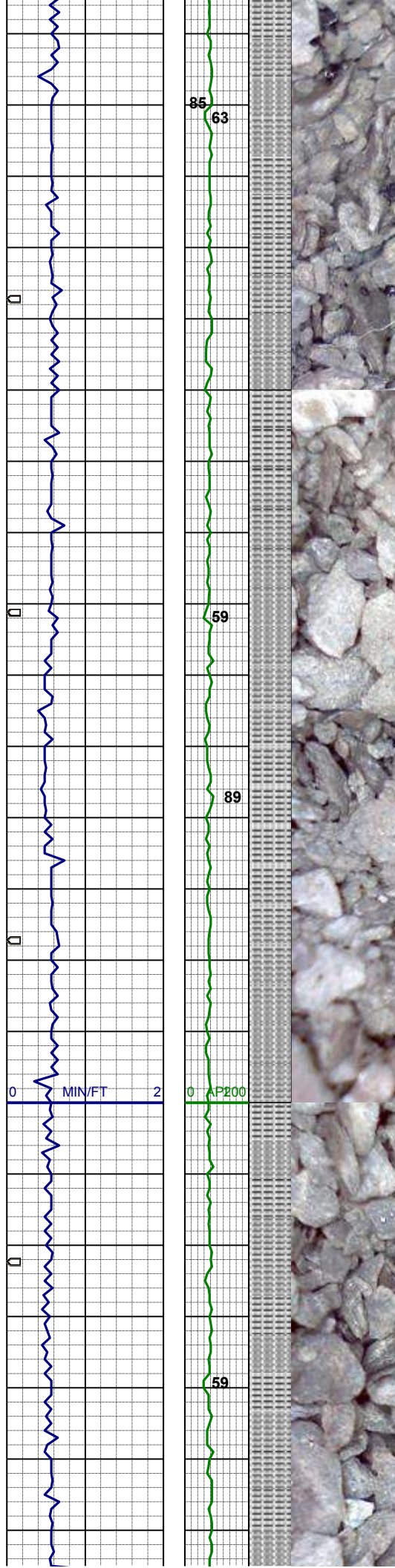
MD 5456'  
INC 0.4°  
AZI 175.9°  
TVD 5438.2'

SLTYSH: lt-mgy, tr tan, sbplty-sbblky,  
tr plty, sft- mfirm, gt txt, tr sdy ip, sl  
calc, grdg- shysltst, tr pyr, tr fos frag,  
tr shyss

MD 5546'  
INC 0.4°  
AZI 148.8°  
TVD 5528.2'

SLTYSH: lt-mgy, tr tan, sbplty-sbblky,  
tr plty, sft- mfirm, gt txt, tr sdy ip, sl  
calc, grdg- shysltst, tr pyr, tr fos frag,  
tr shyss

MD 5636'  
INC 0.5°  
AZI 156.2°  
TVD 5618.2'



SLTYSH: lt-mgy- gybrn, occ dk gy  
sbplty-sbblky, tr plty, sft- mfirm, gt txt,  
tr sdy ip, sl calc, grdg- shyss

WT 8.8 / VIS 37

MD 5726'  
INC 0.4°  
AZI 180.3°  
TVD 5708.2'

SLTYSH: lt-mgy- gybrn, occ dk gy  
sbplty-sbblky, tr plty, sft- mfirm, gt txt,  
tr sdy ip, sl calc, grdg- shyss

GAS SCALE CHANGE

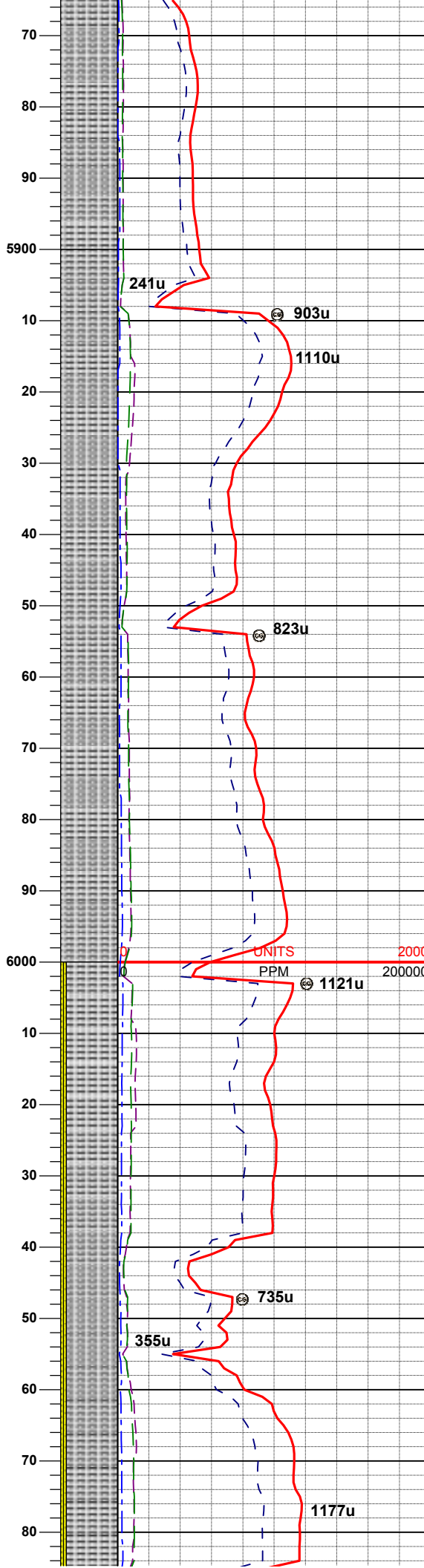
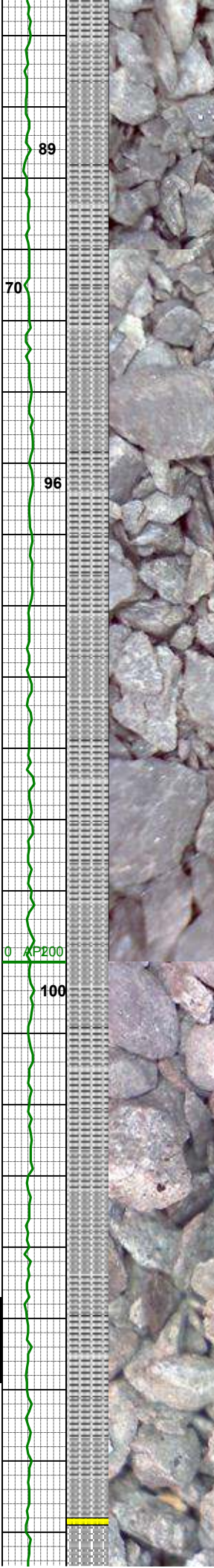
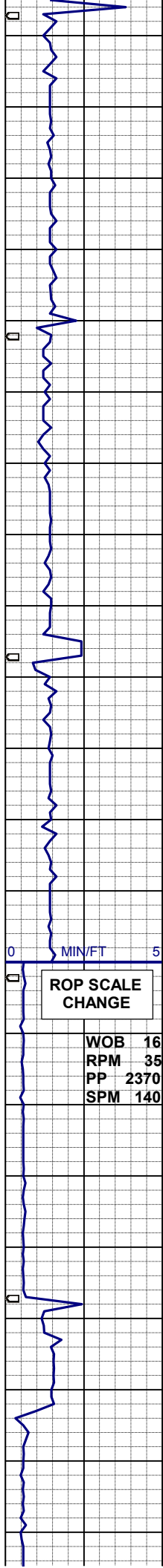
UNITS 2000  
PPM 200000

MD 5816'  
INC 0.5°  
AZI 198.4°  
TVD 5798.2'

SLTYSH: lt-mgy- gybrn, occ dk gy  
sbplty-sbblky, tr plty, sft- mfirm, gt txt,  
tr sdy ip, sl calc, grdg- shyss

WT 8.95 / VIS 41





MD 5906'  
INC 0.7°  
AZI 205.8°  
TVD 5888.2'

**WT 9.4 / VIS 41**

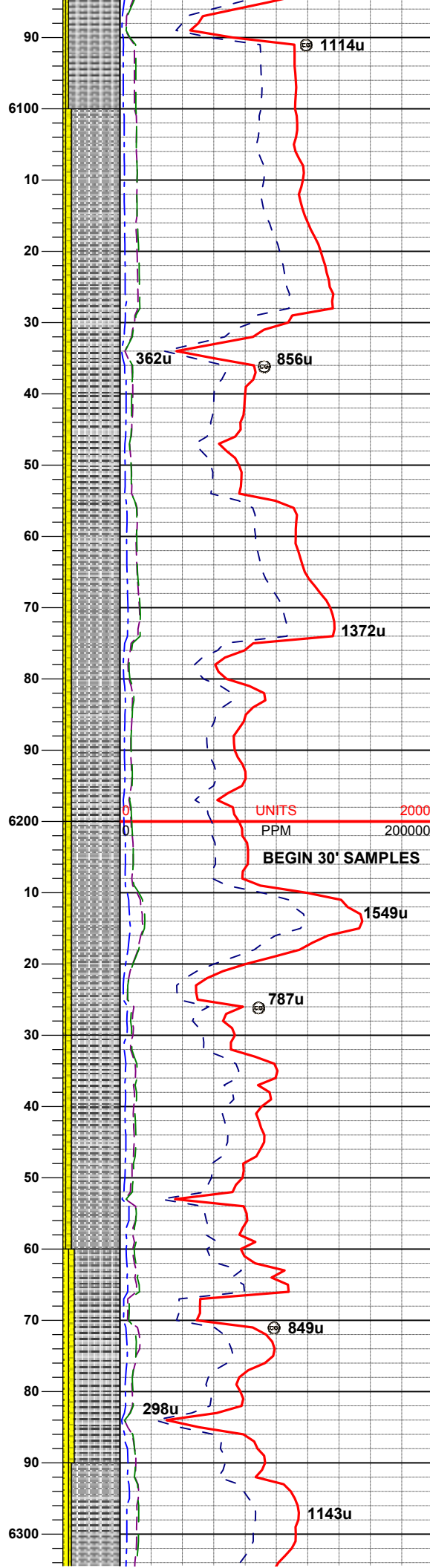
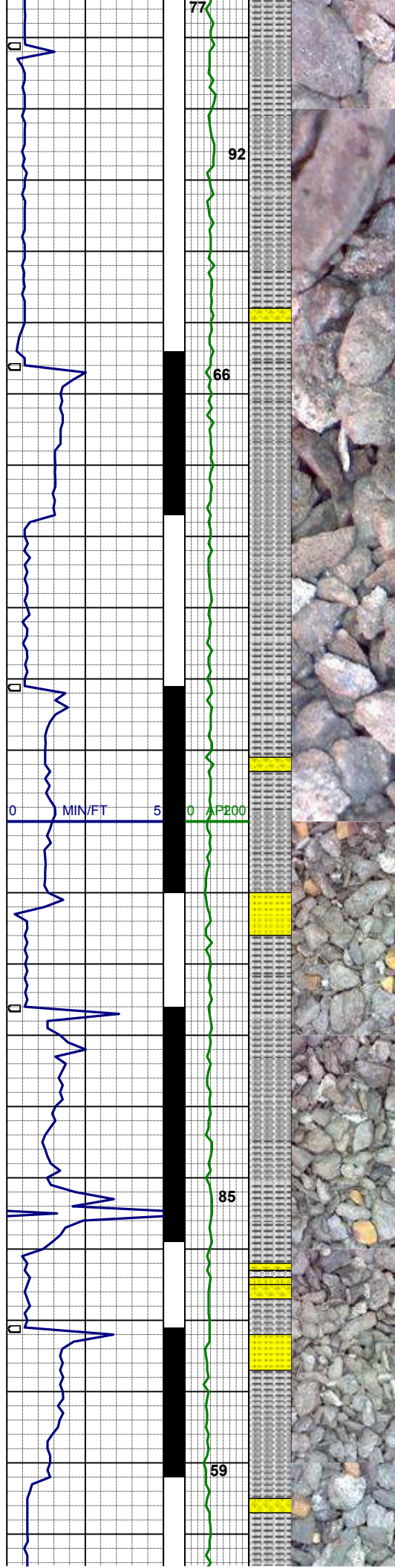
SLTYSH: lt-mgy- gybrn, occ dk gy  
sbplty-sbbiky, tr plty, sft- mfirrm, gt txt,  
tr sdy ip, sl calc, grdg- shyss

MD 5996'  
INC 0.9°  
AZI 213.0°  
TVD 5978.2'

SLTYSH: lt-mgy- gybrn, occ dk gy  
sbplty-sbbiky, tr plty, sft- mfirrm, gt txt,  
tr sdy ip, sl calc, grdg- shyss, occ wh-  
ltgy s&p fgr ss

**WT 9.75 / VIS 40**

MD 6085'  
INC 0.8°



SLTYSH: lt-mgy- gybrn, occ dk gy  
sbplty-sbblky, tr plty, sft- mfirm, gt txt,  
tr sdy ip, sl calc, grdg- shyss, occ wh-  
ltgy s&p fgr ss

WT 9.6 / VIS 40

MD 6175'  
INC 4.4°  
AZI 81.0°  
TVD 6157.0'

SLTYSH: lt-mgy- gybrn, occ dk gy  
sbplty-sbblky, tr plty, sft- mfirm, gt txt,  
tr sdy ip, sl calc, grdg- shyss, occ wh-  
ltgy s&p fgr ss

WT 9.7 / VIS 39

MD 6220'  
INC 8.3°  
AZI 77.3°  
TVD 6201.8'

SLTYSH: lt-mgy- gybrn, occ dk gy  
sbplty-sbblky, tr plty, sft- mfirm, gt txt,  
tr sdy ip, sl calc, grdg- shyss, occ wh-  
ltgy s&p fgr ss

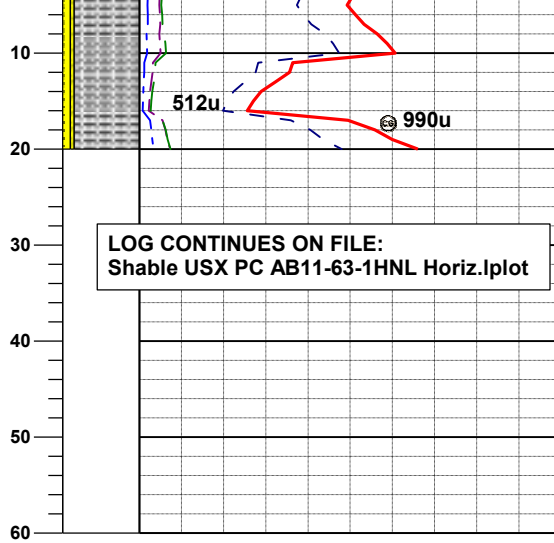
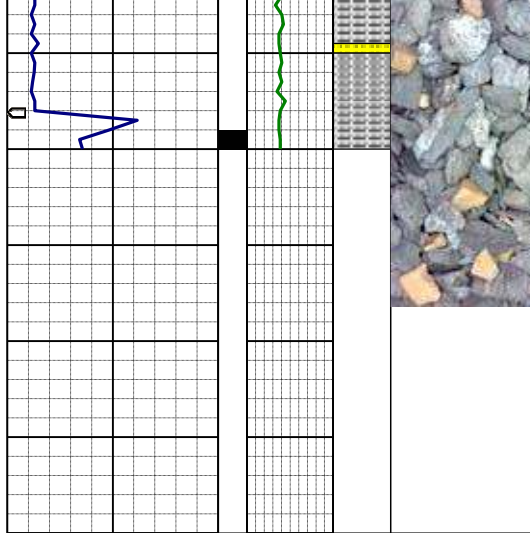
WT 9.7 / VIS 39

MD 6265'  
INC 12.5°  
AZI 82.0°  
TVD 6246.0'

SLTYSH: lt-mgy- gybrn, occ dk gy  
sbplty-sbblky, tr plty, sft- mfirm, gt txt,  
tr sdy ip, sl calc, grdg- shyss, occ wh-  
ltgy s&p fgr ss

SLTYSH: lt-mgy- gybrn, occ dk gy  
sbplty-sbblky, tr plty, sft- mfirm, gt txt,  
tr sdy ip, sl calc, grdg- shyss, occ wh-  
ltgy s&p fgr ss





MD 6310'  
INC 15.8°  
AZI 79.8°  
TVD 6286.6'

THANK YOU FOR CHOOSING  
COLUMBINE LOGGING, INC.