



Cement Bond, V.D.L.
Gamma-Ray, C.C.L. Log

Pioneer Energy Services

Company Augustus Energy Resources
Well Five Rivers 22-19
Field Wildcat
County Yuma State Colorado

Location: API #: 05125120790000
1794' FNL & 2299' FWL SENW
SEC 19 TWP 2N RGE 46W
Permanent Datum GL Elevation 3978'
Log Measured From KB
Drilling Measured From KB
Other Services none
Elevation K.B. 3984'
D.F. 3983'
G.L. 3978'

Company Augustus Energy Resources
Well Five Rivers 22-19
Field Wildcat
County Yuma
State Colorado

Date 3-31-14

Run Number ONE
Depth Driller 2880'
Depth Logger 2822'
Bottom Logged Interval 2822'
Top Log Interval SRFACE
Open Hole Size 6.25"
Type Fluid WATER
Density / Viscosity NA
Max. Recorded Temp. 110
Estimated Cement Top SURFACE
Time Well Ready ROA
Time Logger on Bottom AM
Equipment Number 1
Location FORT MORGAN
Recorded By JOHN HOLLIS
Witnessed By MR. JUSTIN STONE

Borehole Record
Run Number Bit From To Size Weight From To
Tubing Record
Casing Record Size Wgt/Ft Top Bottom
Surface String
Prot. String
Production String 4.5" SURFACE 2880'
Liner

<<< Fold Here >>>

All interpretations are opinions based on inferences from electrical or other measurements and we cannot and do not guarantee the accuracy or correctness of any interpretation, and we shall not, except in the case of gross or willful negligence on our part, be liable or responsible for any loss, costs, damages, or expenses incurred or sustained by anyone resulting from any interpretation made by any of our officers, agents or employees. These interpretations are also subject to our general terms and conditions set out in our current Price Schedule.

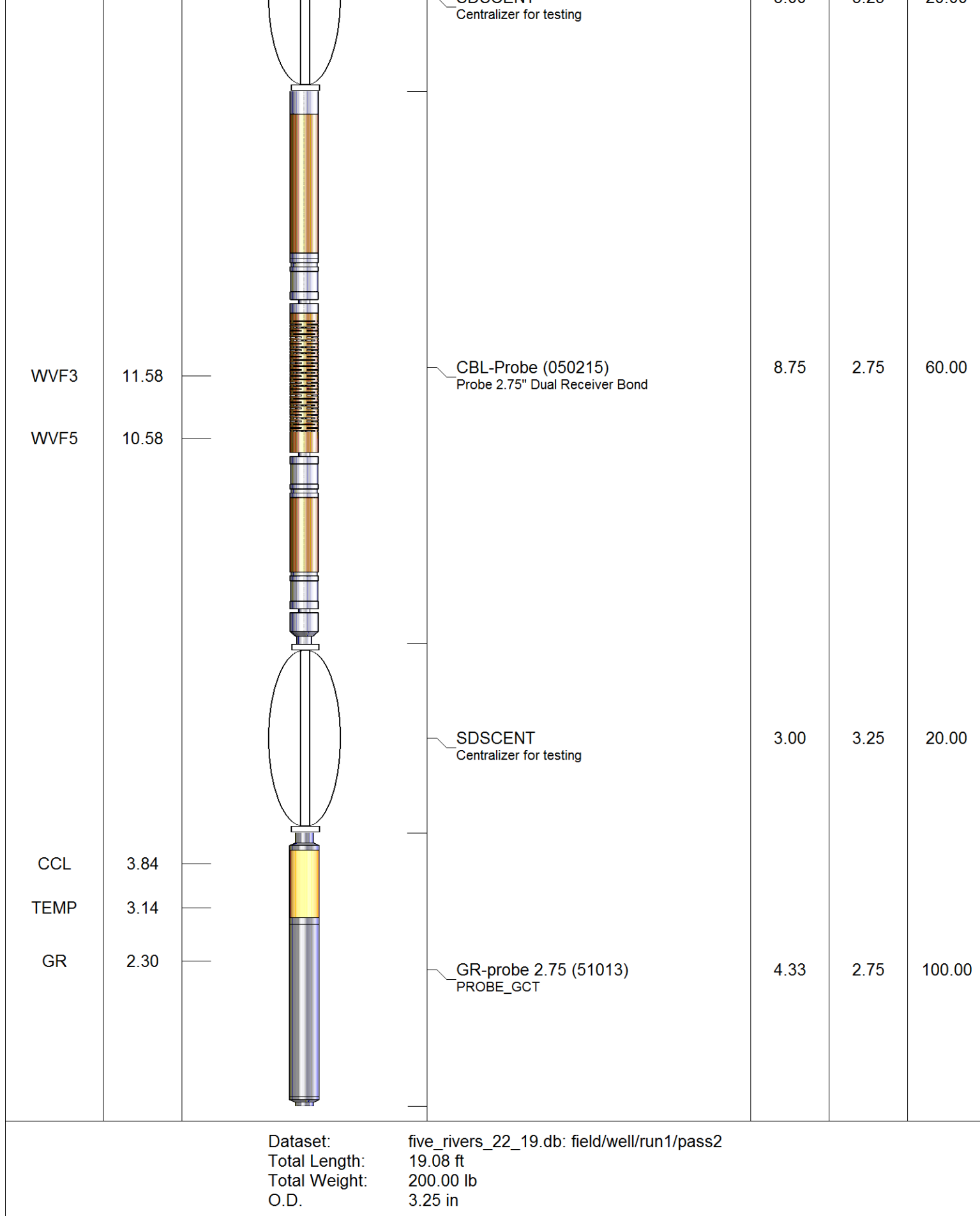
Comments

S.O.# 2-260004

CORRALATED TO OPEN HOLE LOG

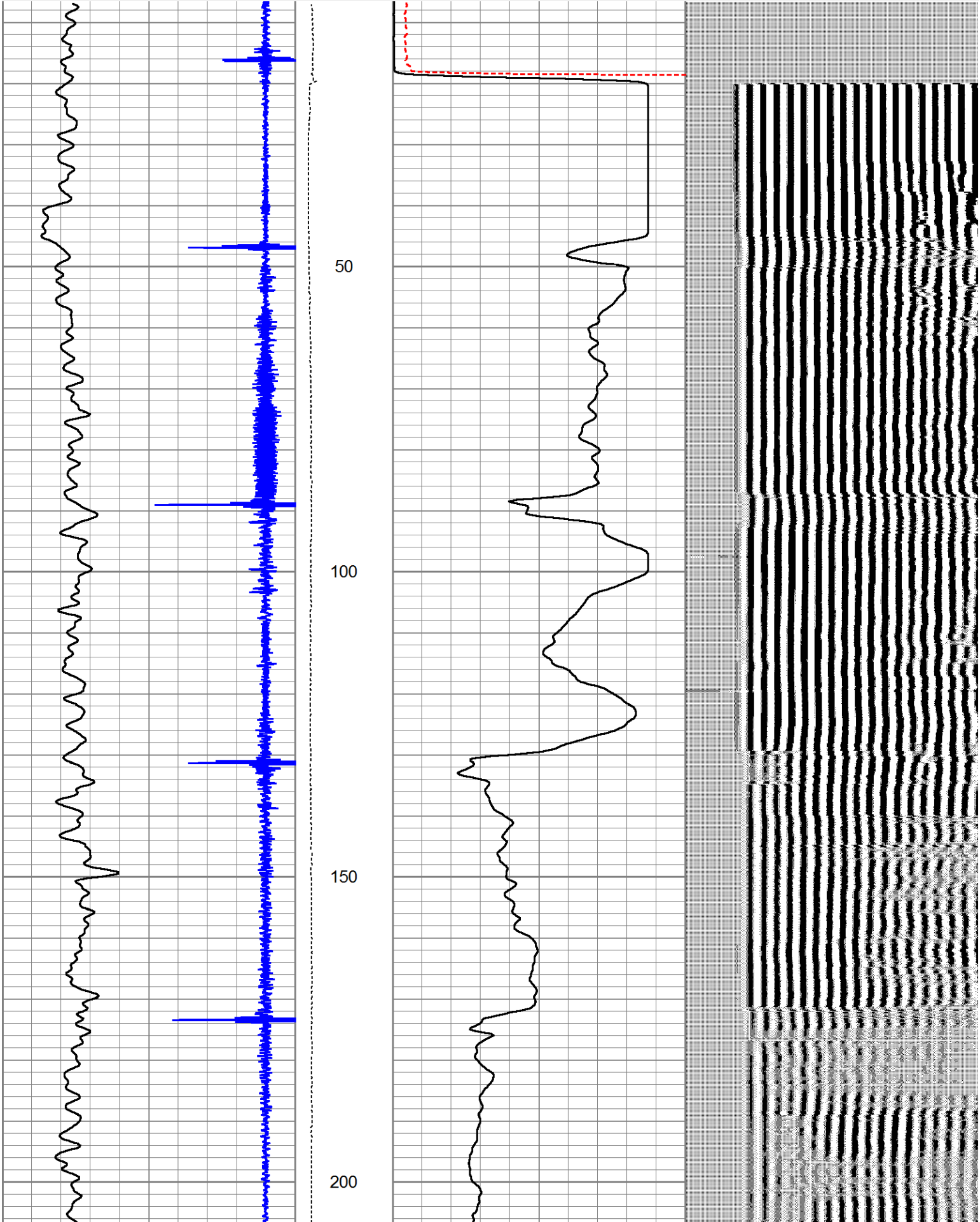
THANK YOU FOR USING PIONEER ENERGY SERVICES

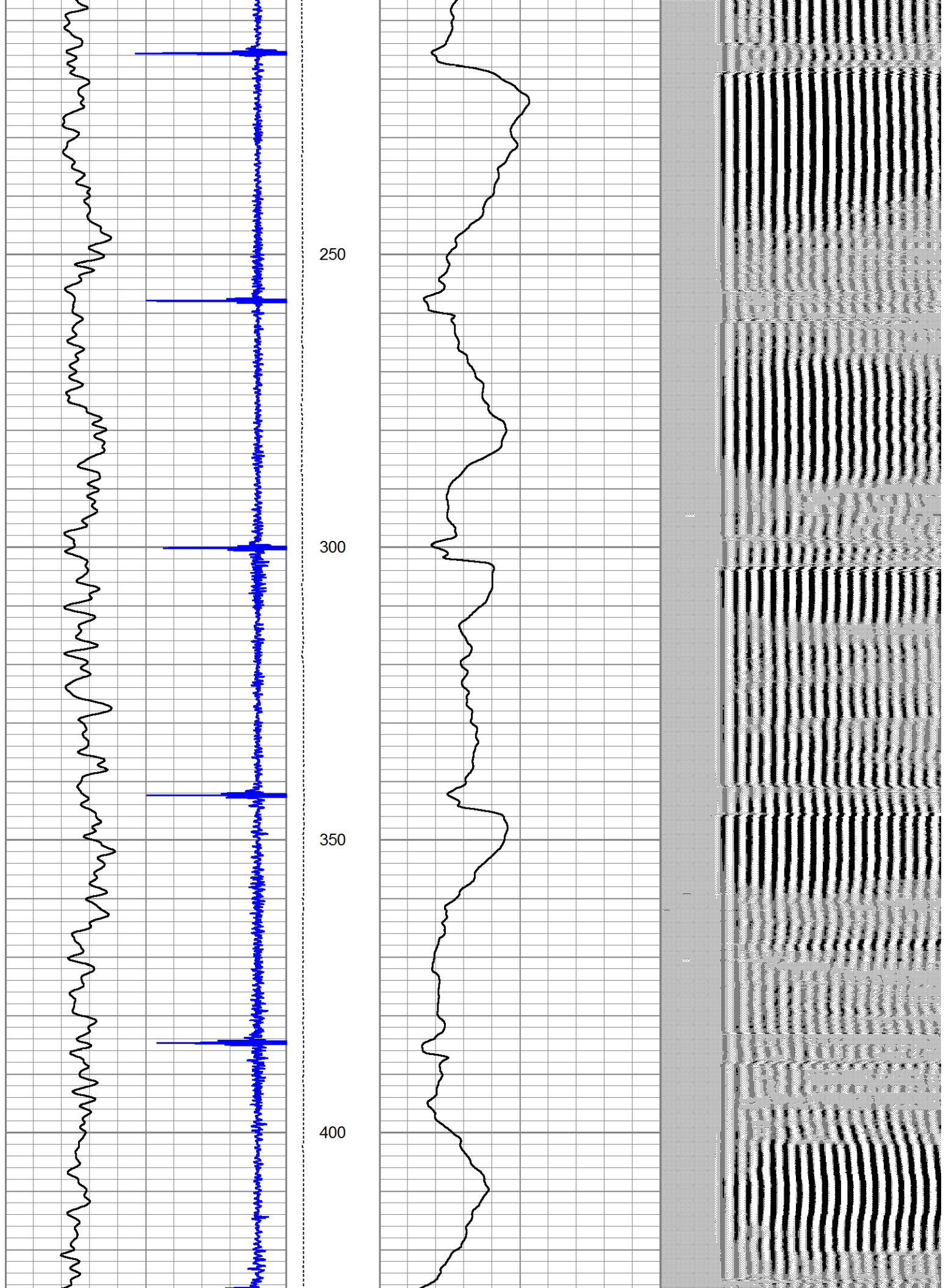
| Sensor | Offset (ft) | Schematic | Description | Len (ft) | OD (in) | Wt (lb) |
|--------|-------------|-----------|-------------|----------|---------|---------|
| | | | SDSCENT | 3.00 | 3.25 | 20.00 |

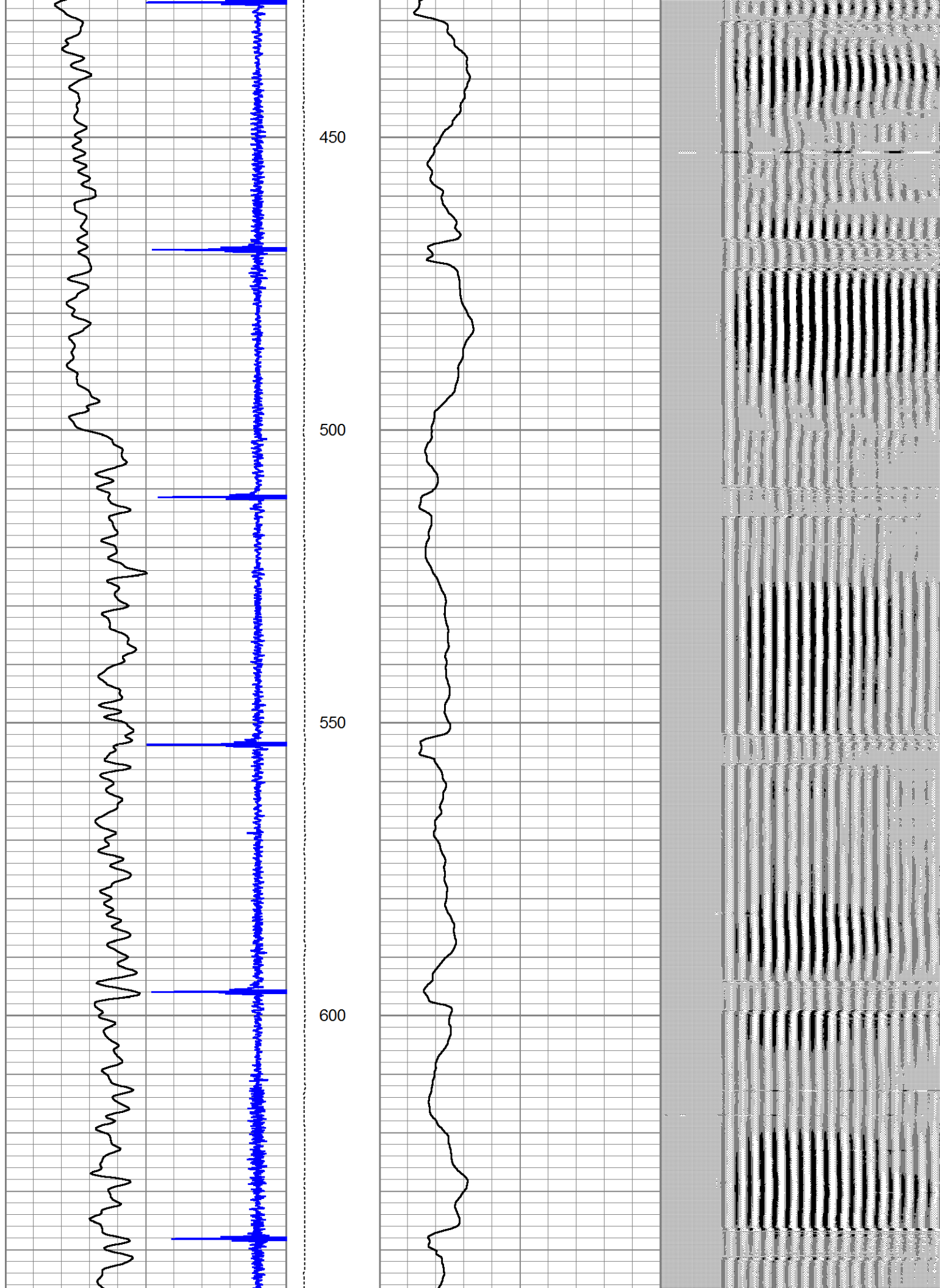


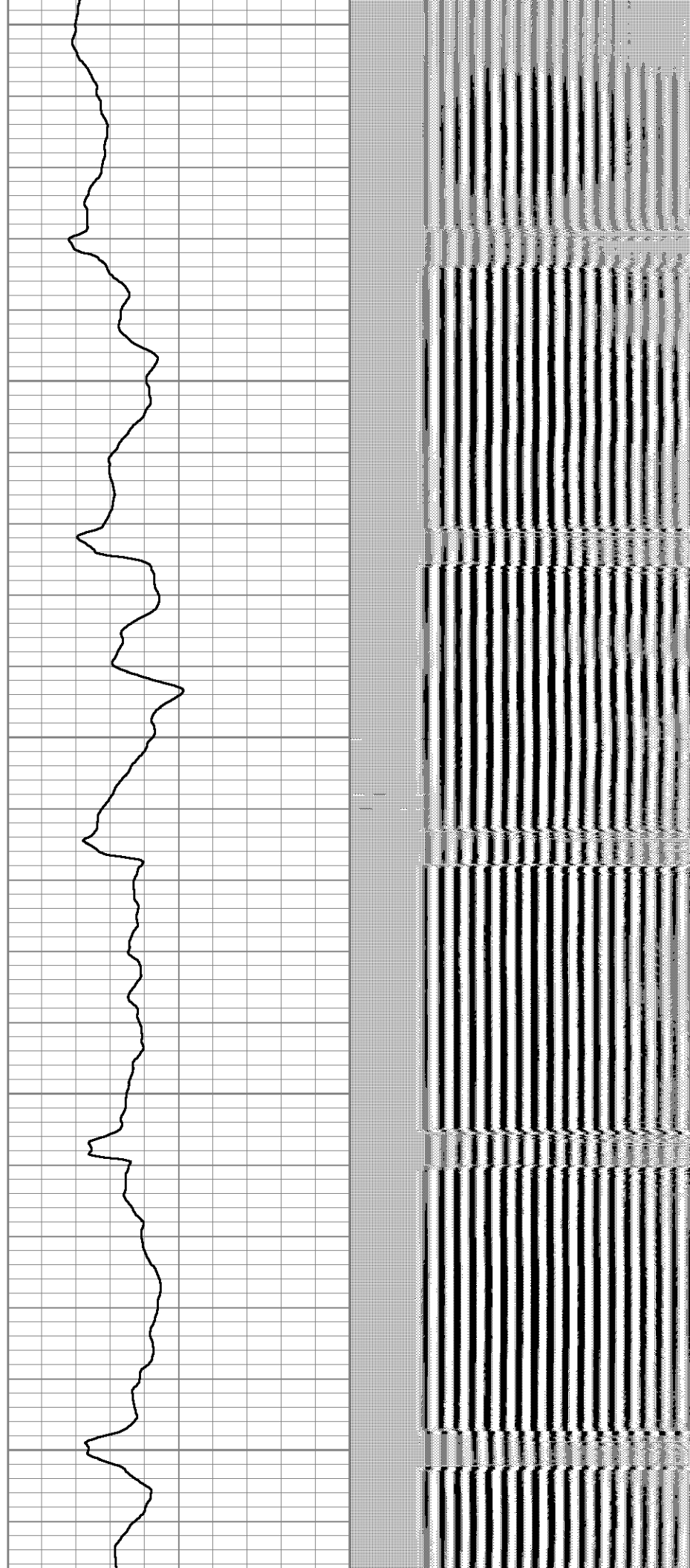
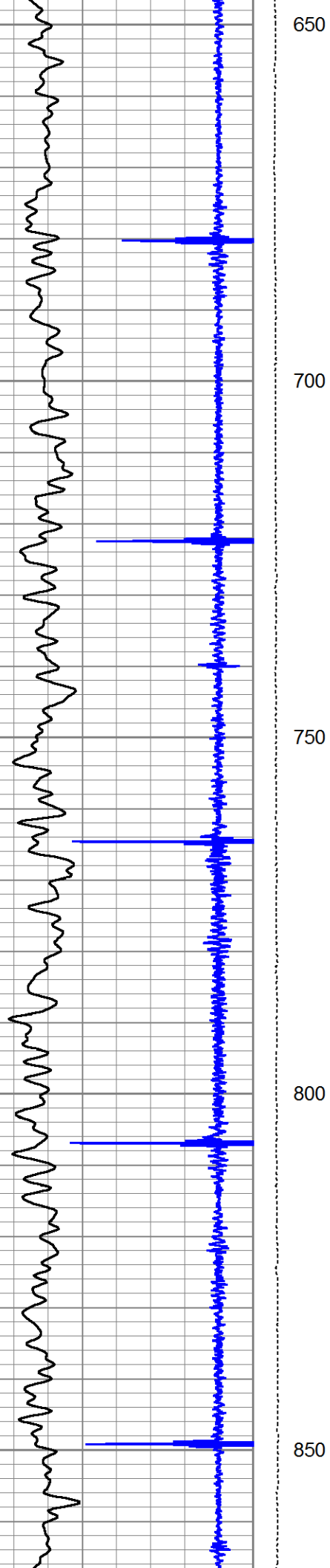
Database File: five_rivers_22_19.db
 Dataset Pathname: pass2
 Presentation Format: cbl_dr
 Dataset Creation: Mon Mar 31 07:40:10 2014 by Log 7.0 B1
 Charted by: Depth in Feet scaled 1:240

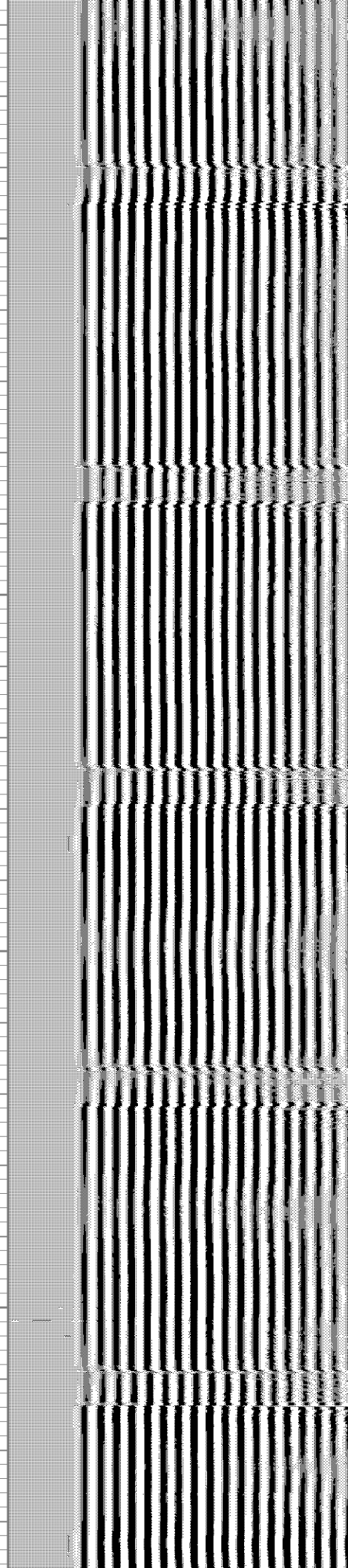
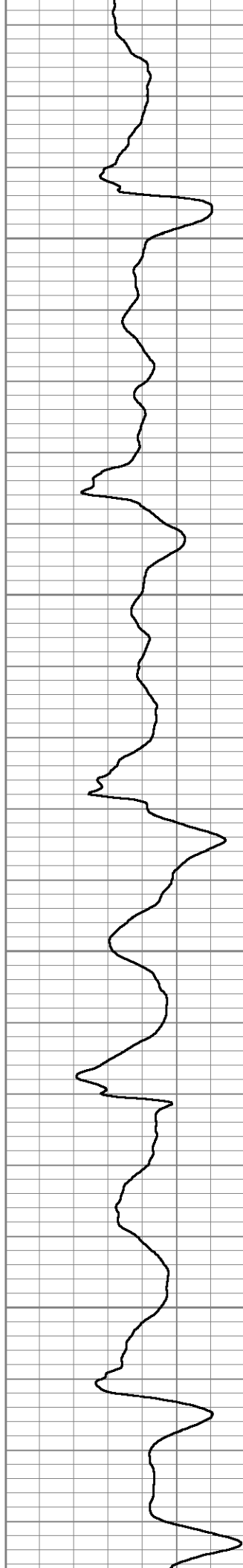
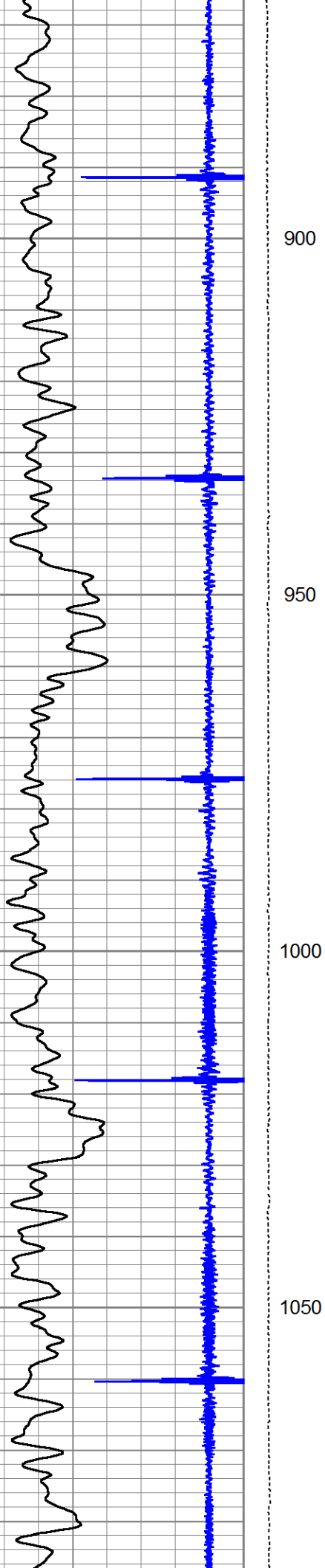
| | | | | | | | | | |
|-------------|------------------|-----|----------------------------|---|--------------------------|-----|-----|------------------|------|
| Charted by: | | | Depth in Feet scaled 1:240 | | | | | | |
| 9 | Collar Locator | -1 | LTEN | 0 | Amplified Amplitude (mV) | 10 | 200 | Variable Density | 1200 |
| 0 | Gamma Ray (GAPI) | 300 | 0 (lb2000 | 0 | Amplitude (mV) | 100 | | | |
| | | | | | | | | | |

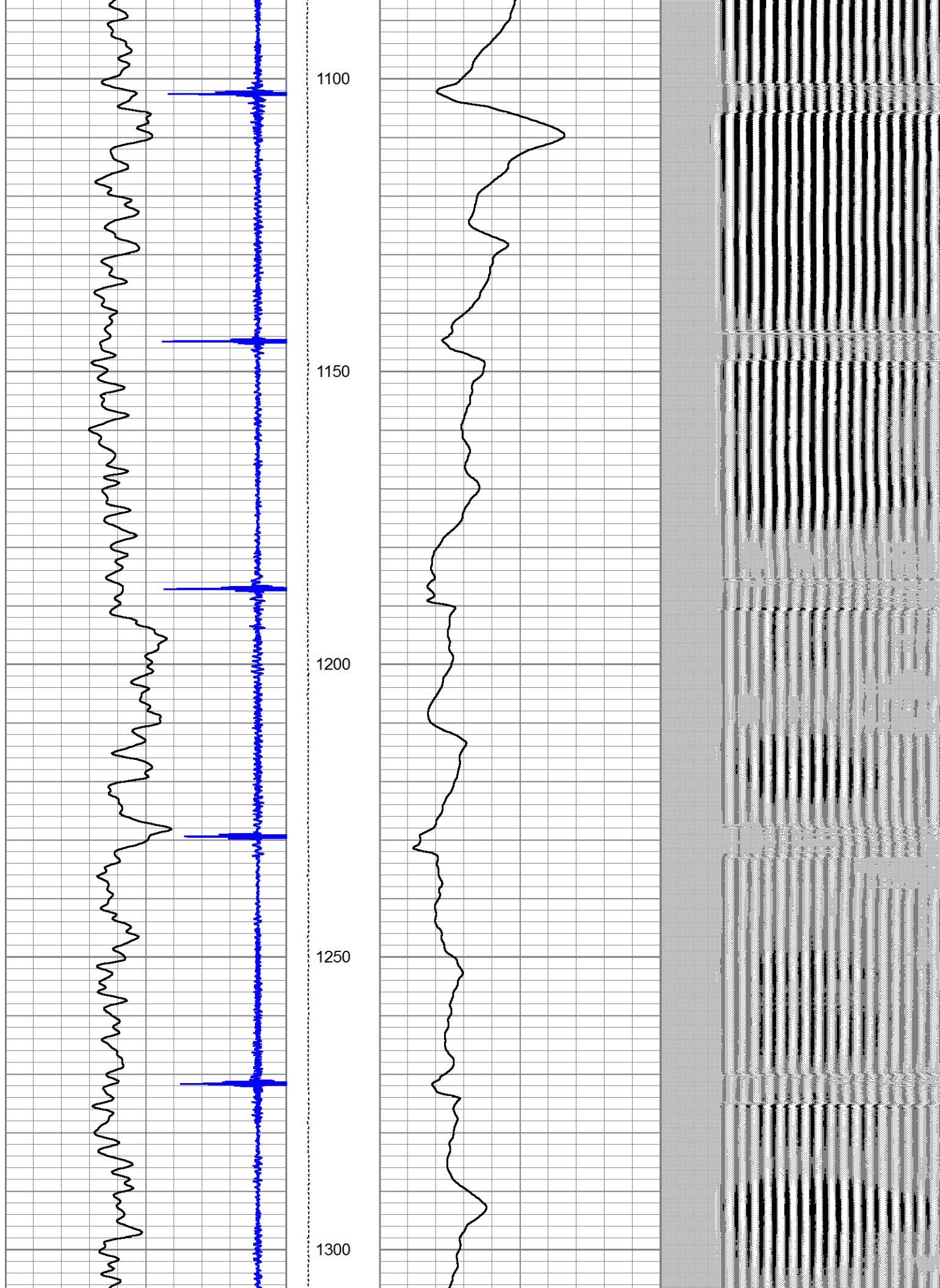


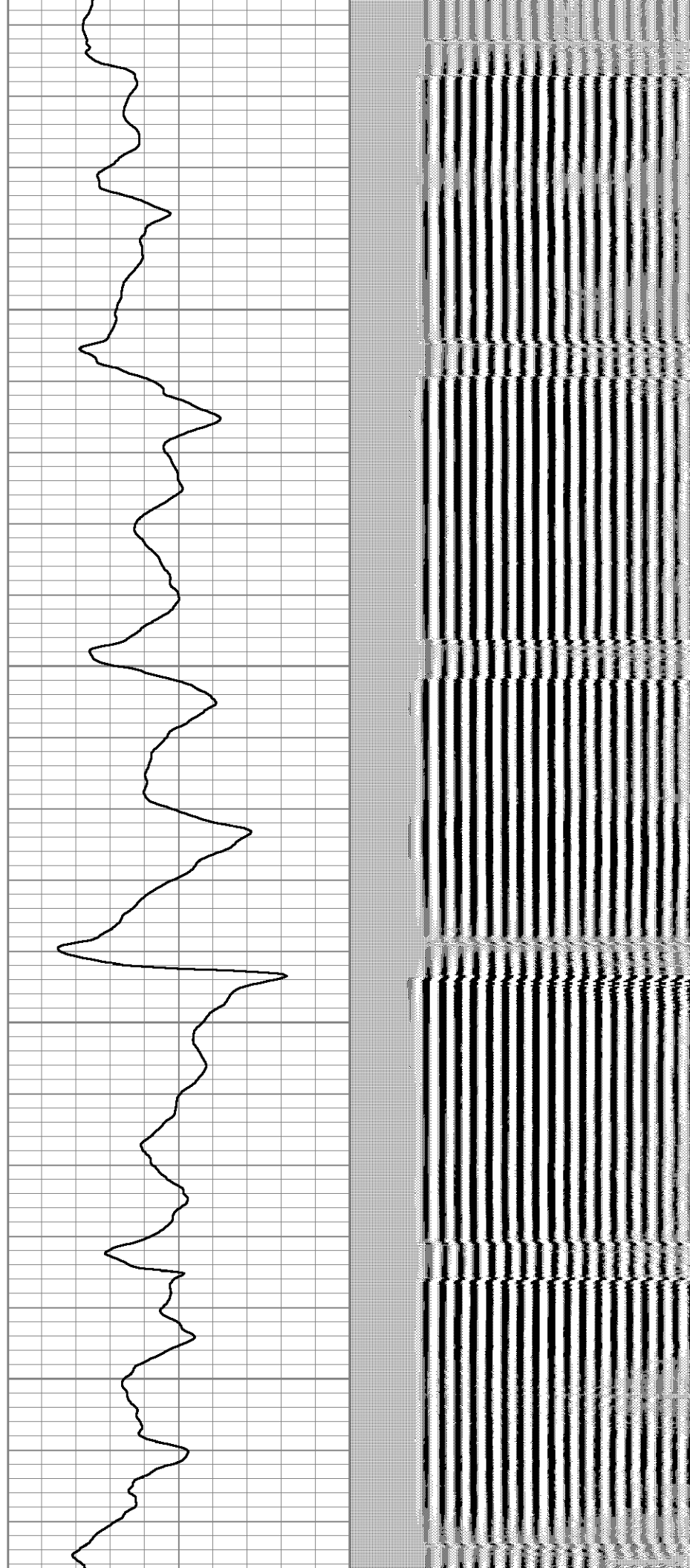
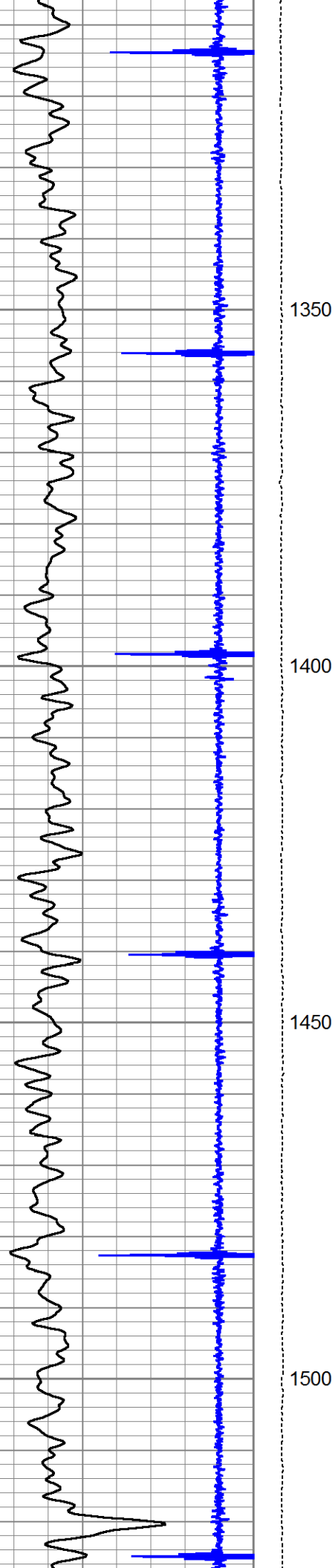


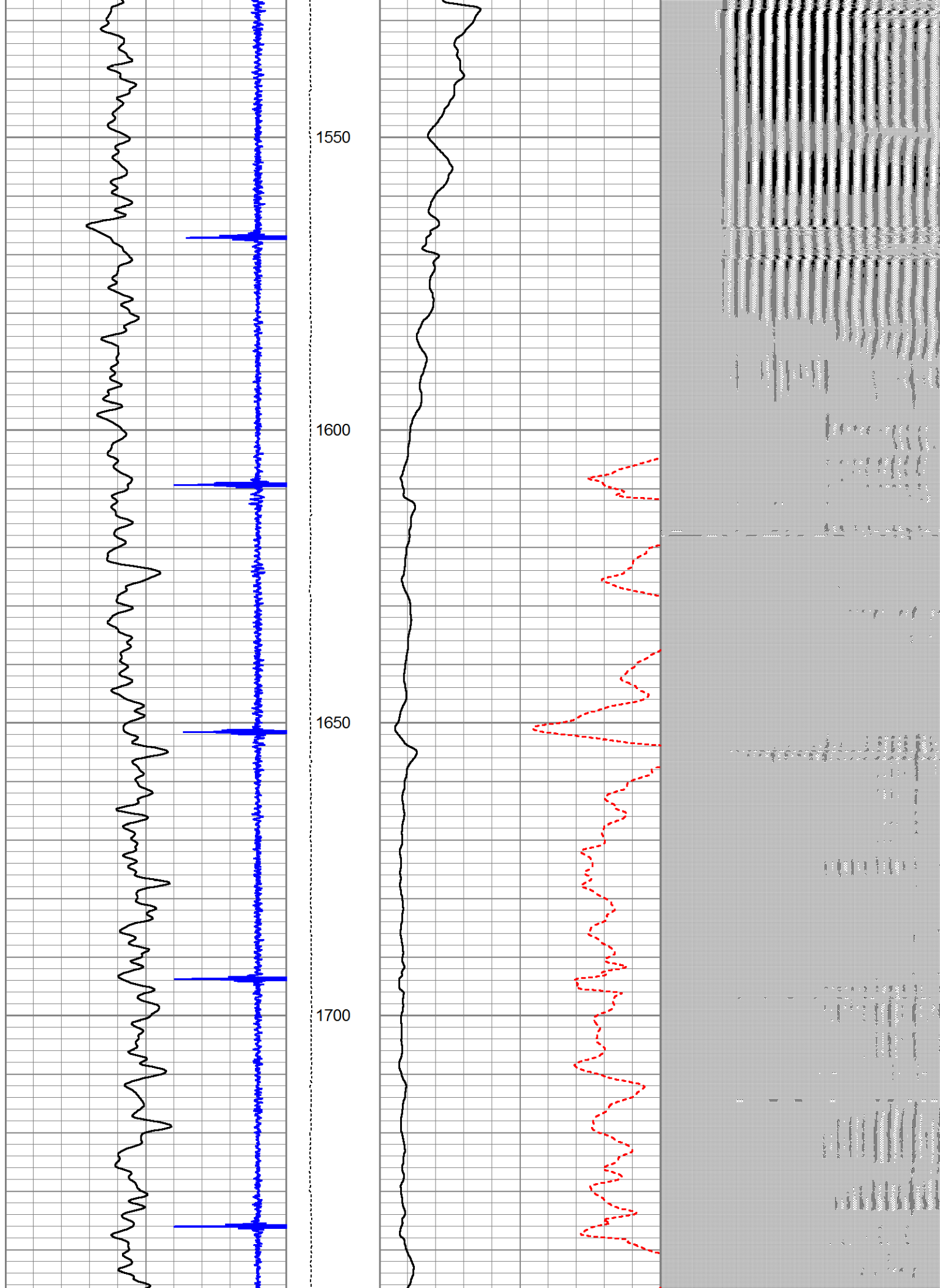


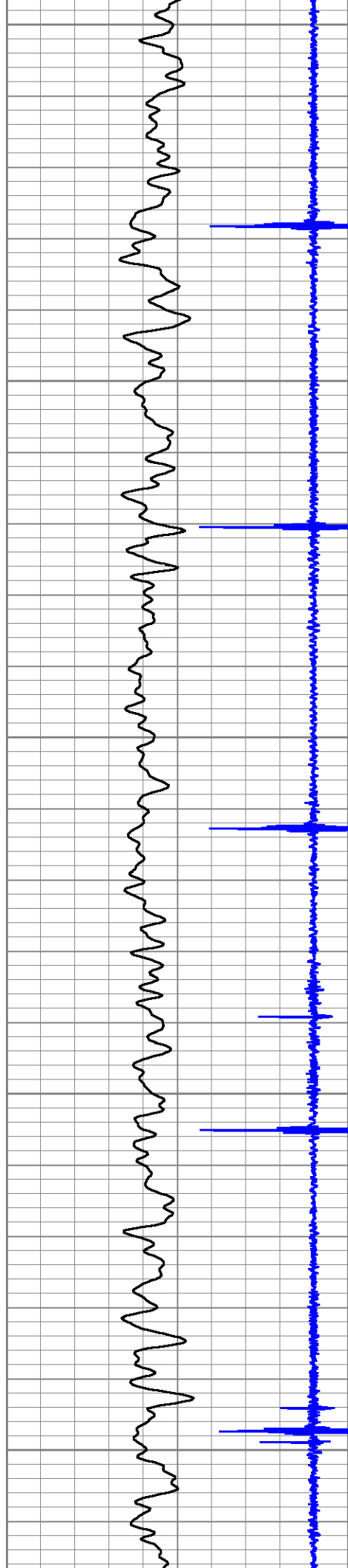












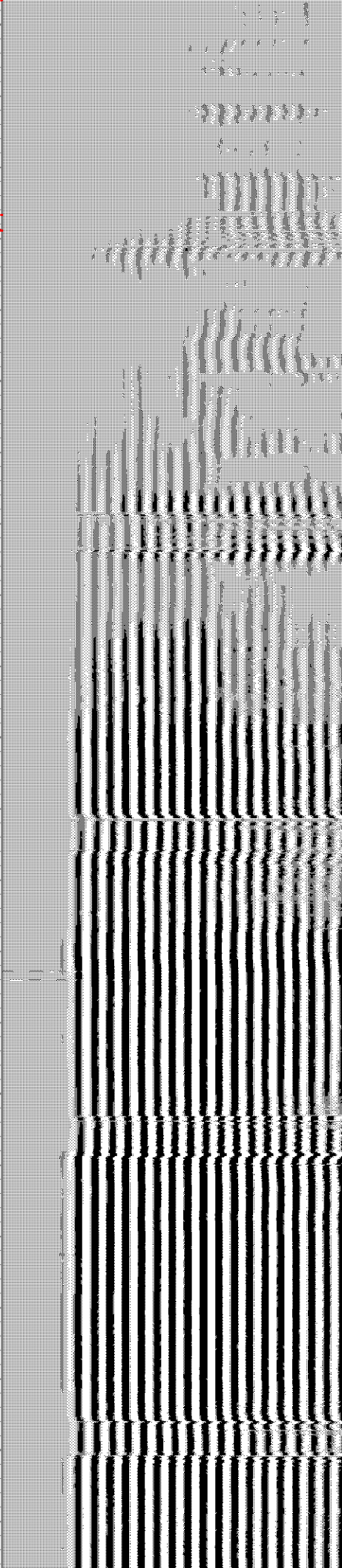
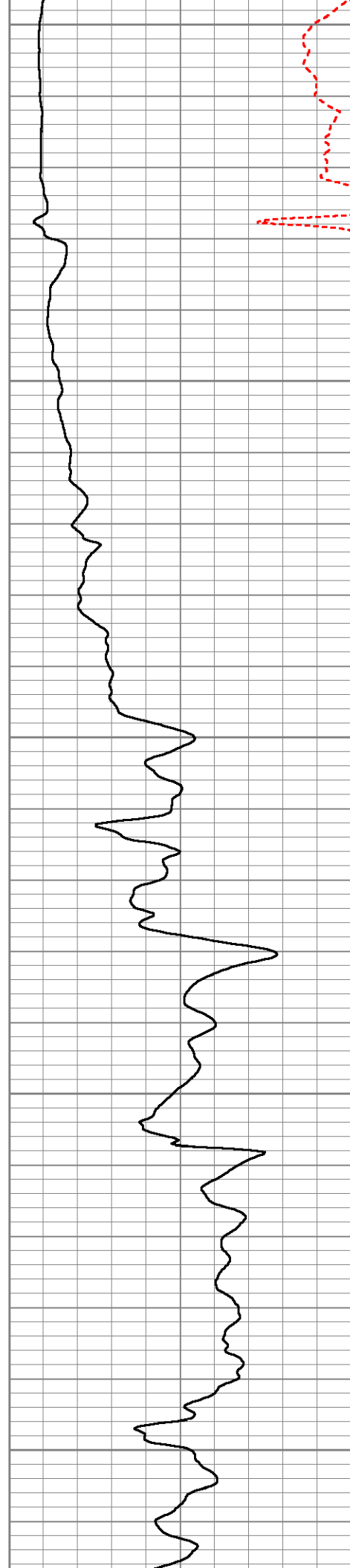
1750

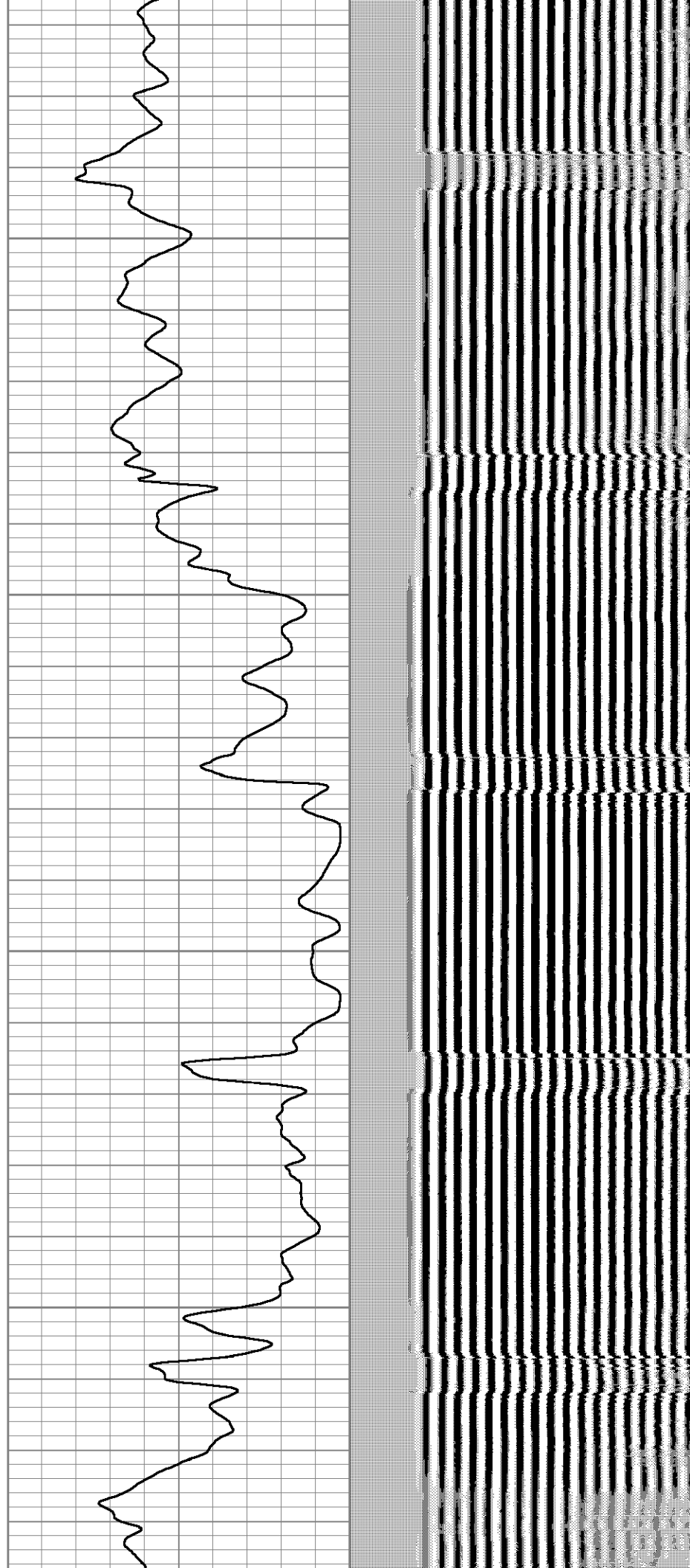
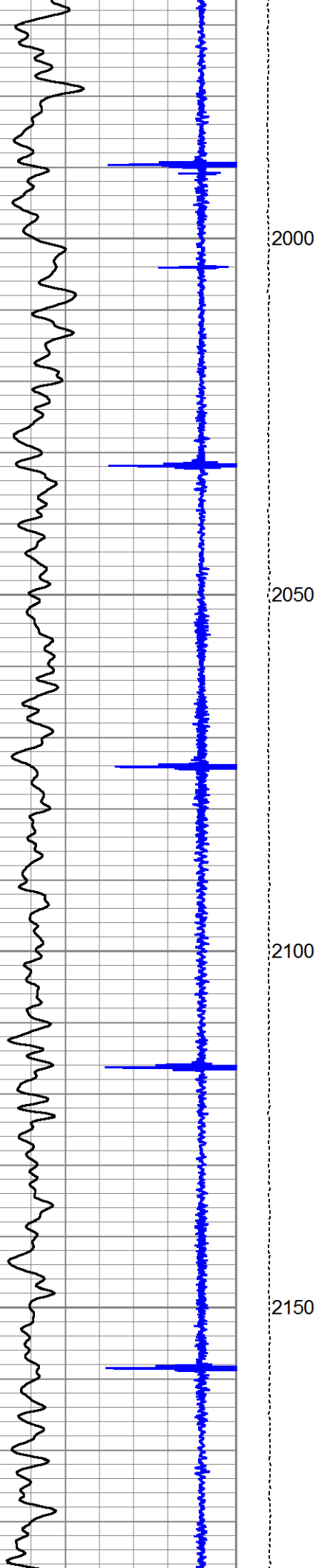
1800

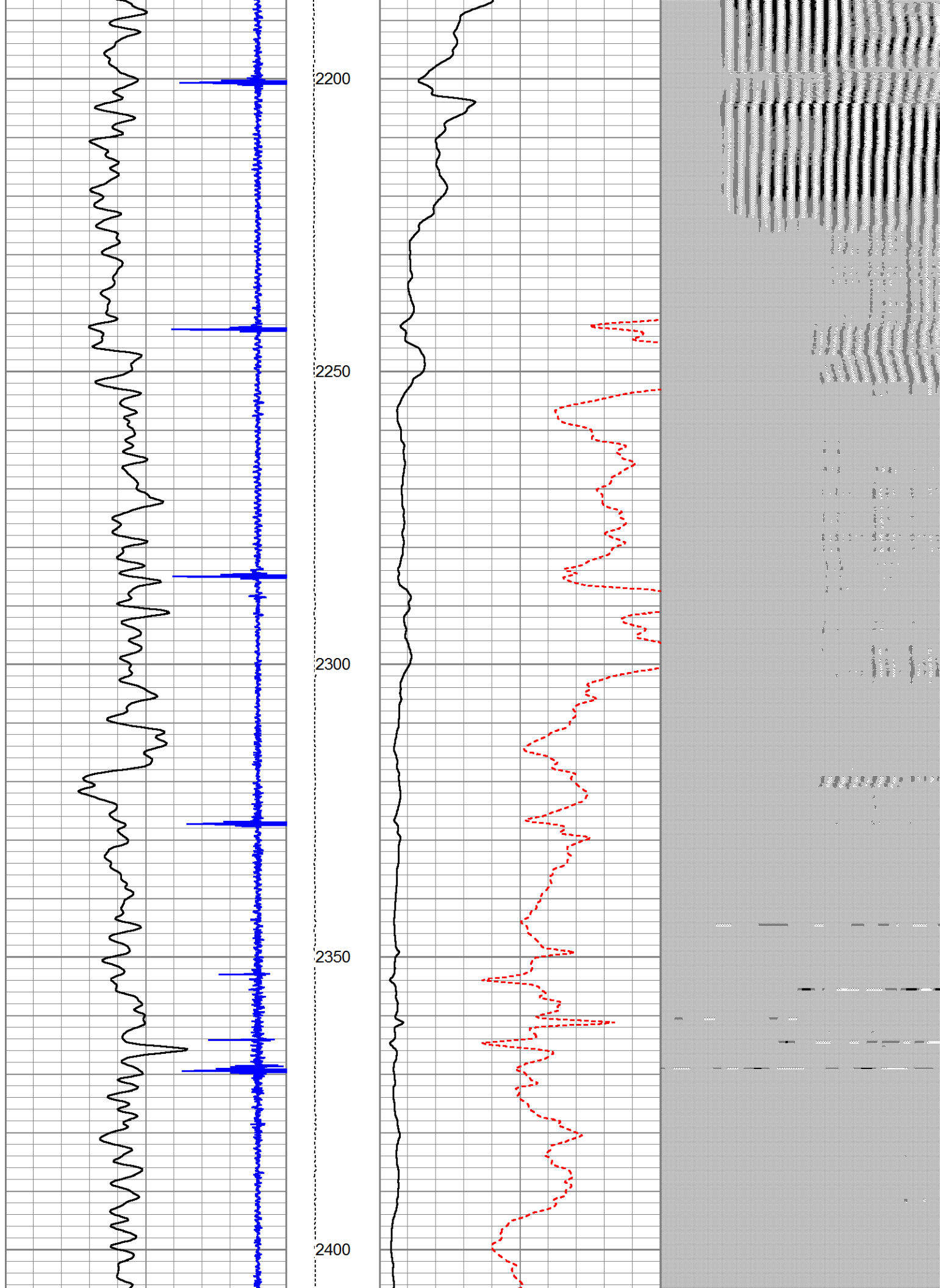
1850

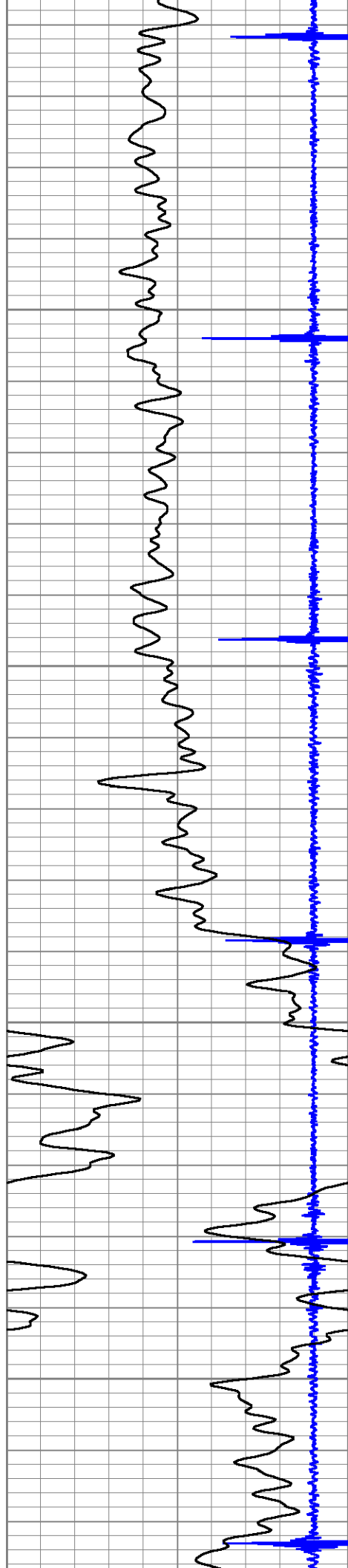
1900

1950









2450

2500

2550

2600

