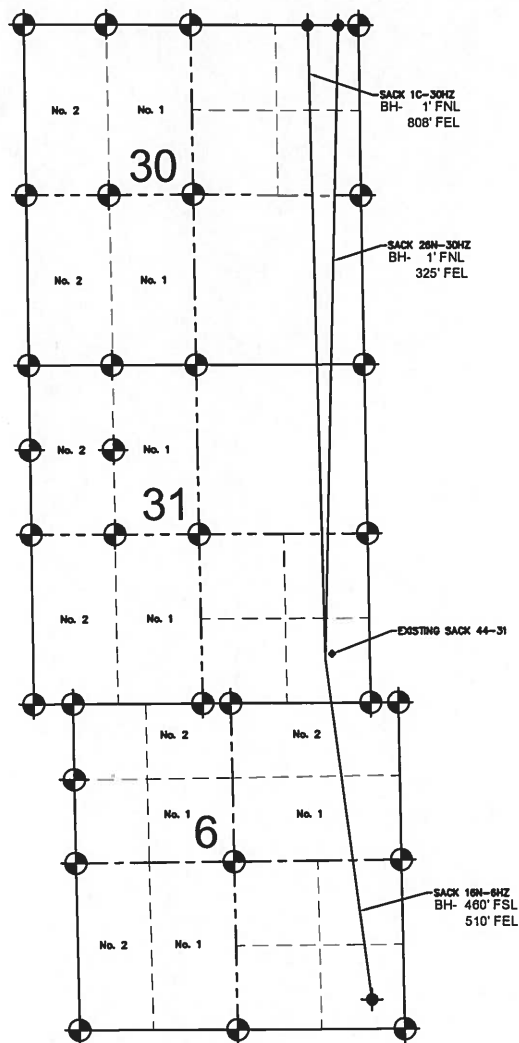


SECTION 31, TOWNSHIP 1 NORTH, RANGE 67 WEST, 6TH P.M.



SACK 1C-30HZ TO BE AT 649' FSL, 702' FEL.
BOTTOM HOLE AT 1' FNL & 808' FEL, SEC. 30.
SACK 16N-6HZ TO BE AT 673' FSL, 702' FEL.
BOTTOM HOLE AT 460' FSL & 510' FEL, SEC. 6.
SACK 26N-30HZ TO BE AT 697' FSL, 702' FEL.
BOTTOM HOLE AT 1' FNL & 325' FEL, SEC. 30.
EXISTING SACK 44-31 IS AT 763' FSL & 593' FEL.

 = EXISTING MONUMENT
 = BOTTOM HOLE
 BH= BOTTOM HOLE
 = PROPOSED WELL
 = EXISTING WELL

PREPARED BY:

PFS  llc

Petroleum Field Services, LLC
1801 W. 13th Ave.
Denver, CO 80204

08-05-13

WELD COUNTY, COLORADO

