



Company **WPX ENERGY LLC.**

Well
NER 344-32Field **RULSON**

County **GARFIELD** State **COLORADO**

Location:	APL #:	05-045-21779-00	Other Services
-----------	--------	-----------------	----------------

LONG: -107.798807
LAT: 39.4790-00

SEC	5	TWP	7S	RGE	93W
-----	---	-----	----	-----	-----

Permanent Datum	G.L.	Elevation	K.B.
Log Measured From	K.B.	Ft. Above PD	D.F.
Drilling Measured From	K.B.	26'	G.L.

Date	3-10-2014
------	-----------

Run Number	C
------------	---

Depth Driller	10344	REVISED 3-17-2014
---------------	-------	-------------------

Present Depth Driller	10
-----------------------	----

Depth Logger	10
--------------	----

Bottom Logged Interval	10
------------------------	----

Top Log Interval	5
------------------	---

Fluid Level	SUR
-------------	-----

Type-Fluid	Wh
------------	----

Max. Recorded Temp.	22
---------------------	----

Estimated Cement 1 op	0
-----------------------	---

Equipment Number

Location	...
----------	-----

Reviewed by	HA
-------------	----

Witnessed by	M.R.
Dorothy Deard	

Run Number	Borehole Record		Size	Casing Record		To
	Bit	From		Weight	From	

<<< Fold Here >>>

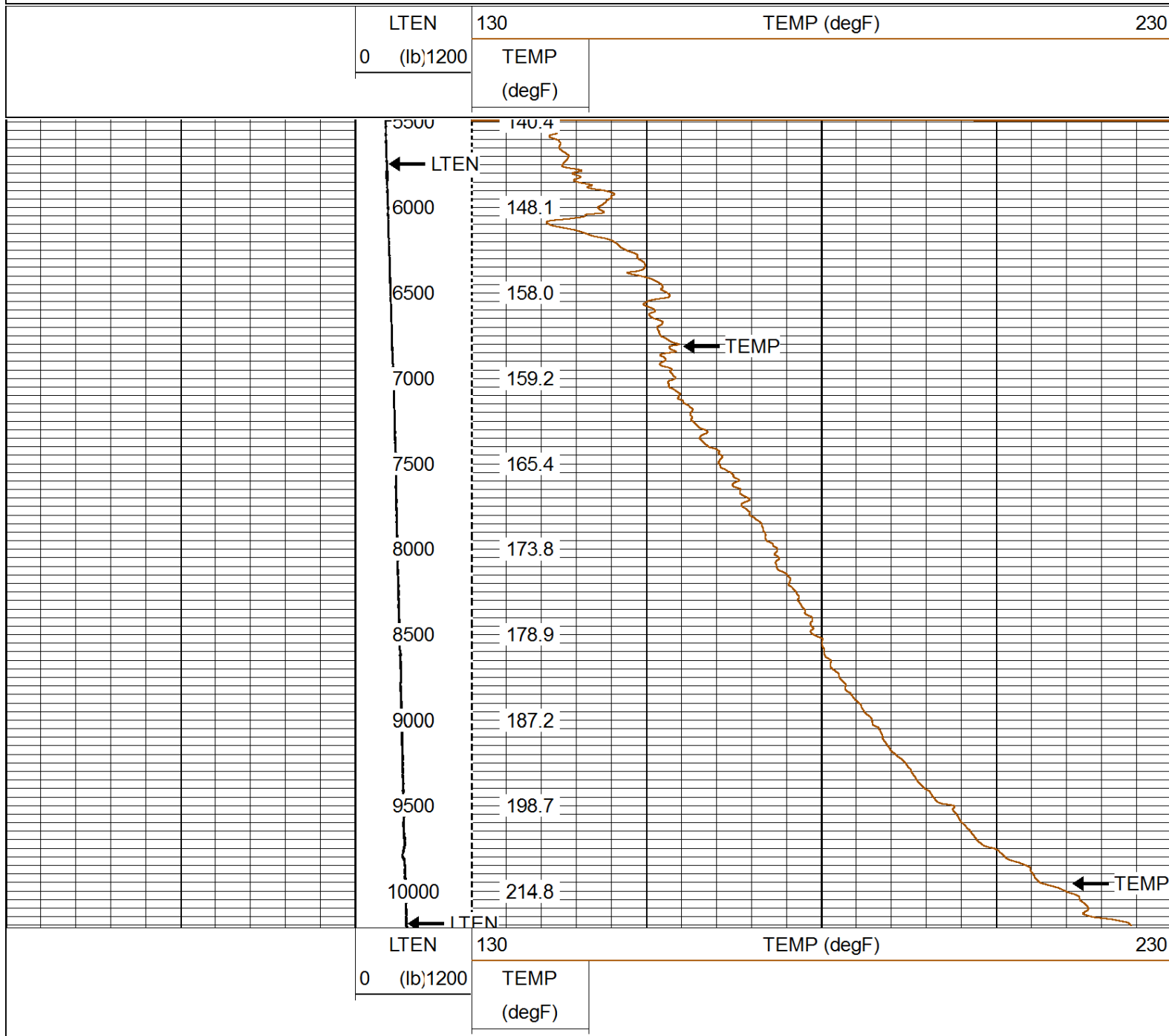
All interpretations are opinions based on inferences from electrical or other measurements and we cannot and do not guarantee the accuracy or correctness of any interpretation, and we shall not, except in the case of gross or willful negligence on our part, be liable or responsible for any loss, costs, damages, or expenses incurred or sustained by anyone resulting from any interpretation made by any of our officers, agents or employees. These interpretations are also subject to our general terms and conditions set out in our current Price Schedule.

WARRIOR 7.0 SOFTWARE - Comments

**NOTE: THERE WAS NO CORRELATION LOG TO CORRELATE TO
MAIN PASS 5" = 100'
CSG PSI = STATIC
MAX TEMP = 224.4° F.**



Database File: 03102014_wpx_ner_344-32.db
 Dataset Pathname: MAIN1
 Presentation Format: rmttemp_q
 Dataset Creation: Tue Mar 11 16:22:41 2014
 Charted by: Depth in Feet scaled 1:10000



Company WPX ENERGY LLC.
 Well NER 344-32
 Field RULISON
 County GARFIELD
 State COLORADO