



C.S. TD

WOB 44.8K  
PP 3777  
RPM 81  
SPM 67/67

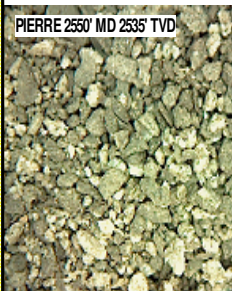
MD 2580 TVD 2564.29  
INC 12.76 AZ 173.67  
VS 23.02

ROP (Min/Ft)  
Gamma (API)

MD 2674 TVD 2656.27  
INC 11.03 AZ 171.71  
VS 29.98

2500  
2550  
2600  
2650  
2700

PIERRE 2550' MD 2535' TVD



## PIERRE

1092' MD 1092' TVD  
CAME IN BEFORE LOGGING  
DEPTH

2500' MD-2550' MD: SLTST: 70% LTGY  
- MEDLTGY, FRI, FN TO MED GRN,  
W SRTD, CALC CMT, SANDY, INTGR  
POR, NO STN, NO FLOR, NO O  
FLOR, NO CUT, NO RNG

2550' MD-2600' MD: SLTST: 60% LTGY  
- MEDLTGY, FRI, FN TO MED GRN,  
W SRTD, CALC CMT, SANDY, INTGR  
POR, NO STN, NO FLOR, NO O  
FLOR, NO CUT, NO RNG

2600' MD-2650' MD: SLTST: 70% LTGY  
- MEDLTGY, FRI, FN TO MED GRN,  
W SRTD, CALC CMT, SANDY, INTGR  
POR, NO STN, NO FLOR, NO O  
FLOR, NO CUT, NO RNG

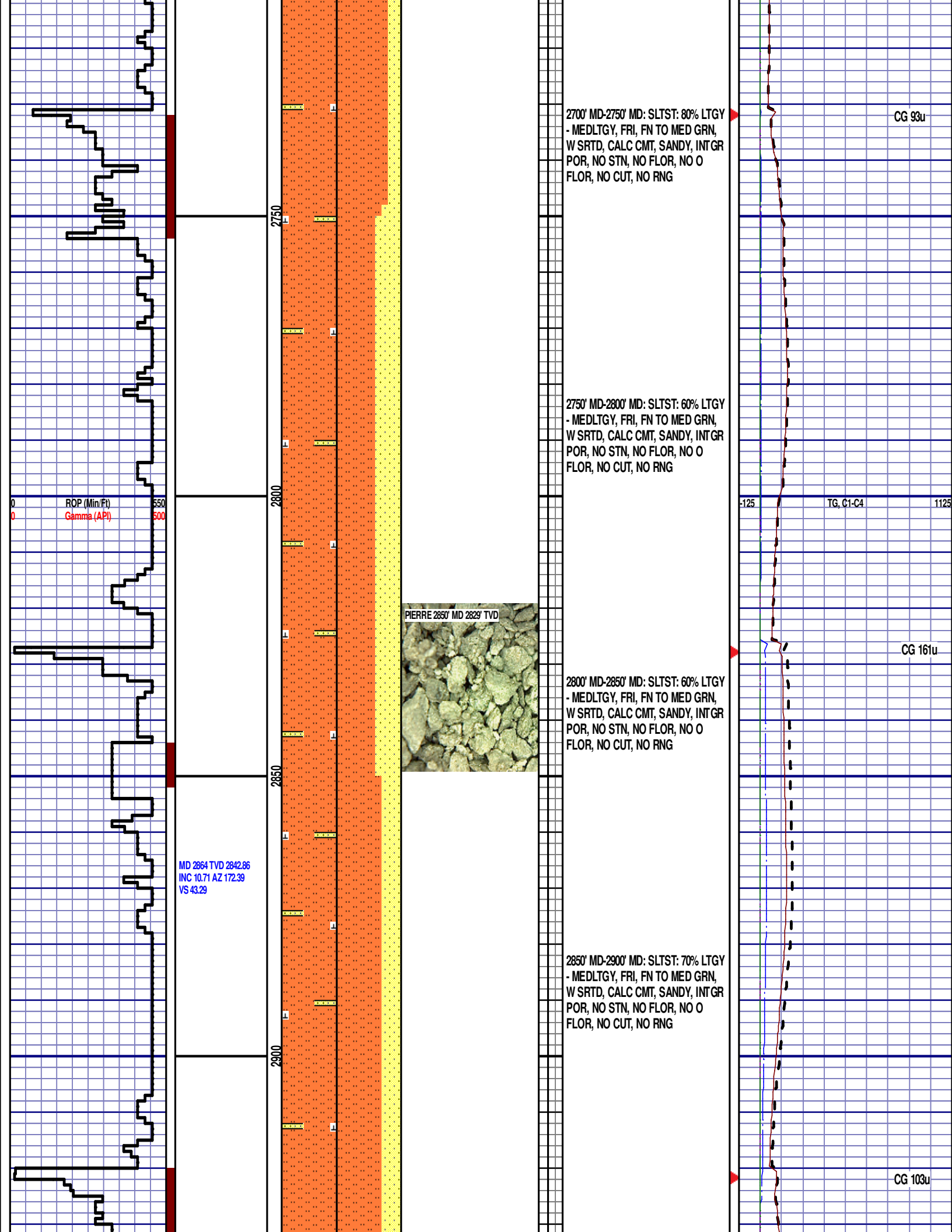
2650' MD-2700' MD: SLTST: 80% LTGY  
- MEDLTGY, FRI, FN TO MED GRN,  
W SRTD, CALC CMT, SANDY, INTGR  
POR, NO STN, NO FLOR, NO O  
FLOR, NO CUT, NO RNG

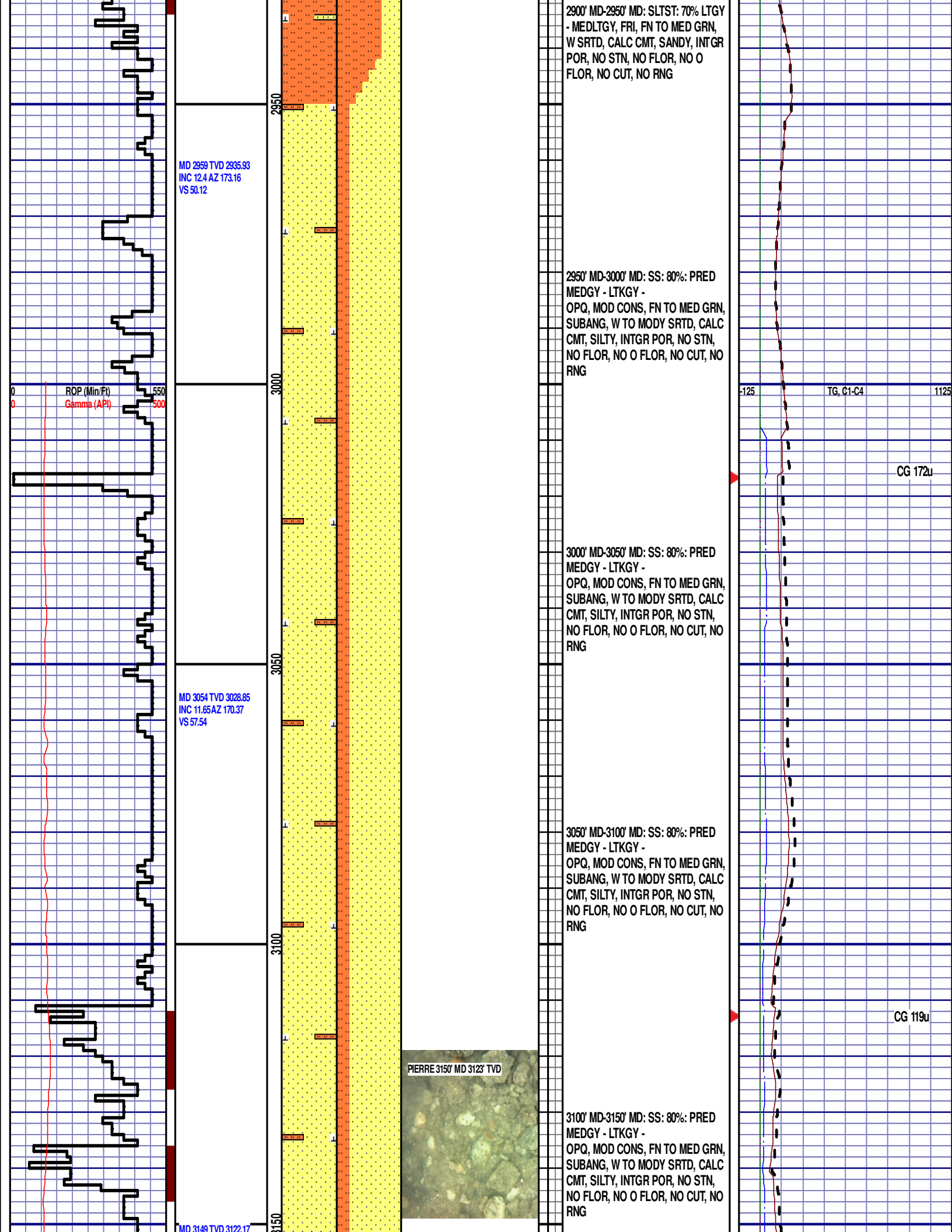
CG 37u

DEPTH 972'  
WT 8.50  
VIS 27  
PH 8.2  
FIL 22.6  
CL 2200  
CAL 200  
H2O 98.8  
OIL 0.0  
LGS 5.5  
GEL 1/2/3  
PV 1  
YP 4  
CK 1/0  
SOL 0.9

TG, C1-C4

CG 32u





INC 9.9 AZ 168.18  
VS 64.9

ROP (Min/Ft)  
Gamma (API)

550  
500

MD 3244 TVD 3215.48  
INC 11.72AZ 166.95  
VS 72.8

3200

3250

3300

3350

3150' MD-3200' MD: SS: 80%: PRED  
MEDGY - LTKGY -  
OPQ, MOD CONS, FN TO MED GRN,  
SUBANG, W TO MODY SRTD, CALC  
CMT, SILTY, INTGR POR, NO STN,  
NO FLOR, NO O FLOR, NO CUT, NO  
RNG

3200' MD-3250' MD: SS: 90%: PRED  
MEDGY - LTKGY -  
OPQ, MOD CONS, FN TO MED GRN,  
SUBANG, W TO MODY SRTD, CALC  
CMT, SILTY, INTGR POR, NO STN,  
NO FLOR, NO O FLOR, NO CUT, NO  
RNG

3250' MD-3300' MD: SS: 90%: PRED  
MEDGY - LTKGY -  
OPQ, MOD CONS, FN TO MED GRN,  
SUBANG, W TO MODY SRTD, CALC  
CMT, SILTY, INTGR POR, NO STN,  
NO FLOR, NO O FLOR, NO CUT, NO  
RNG

3300' MD-3350' MD: SS: 90% V/LTGY -  
MEDGY - OPQ, LSEY CONS, MED  
TO FN GRN, SUBANG, MODY SRTD,  
CALC CMT, IMBD MICA, INTGR POR,  
NO STN, NO MIN FLOR, NO O  
FLOR, NO CUT, NO RNG

-125

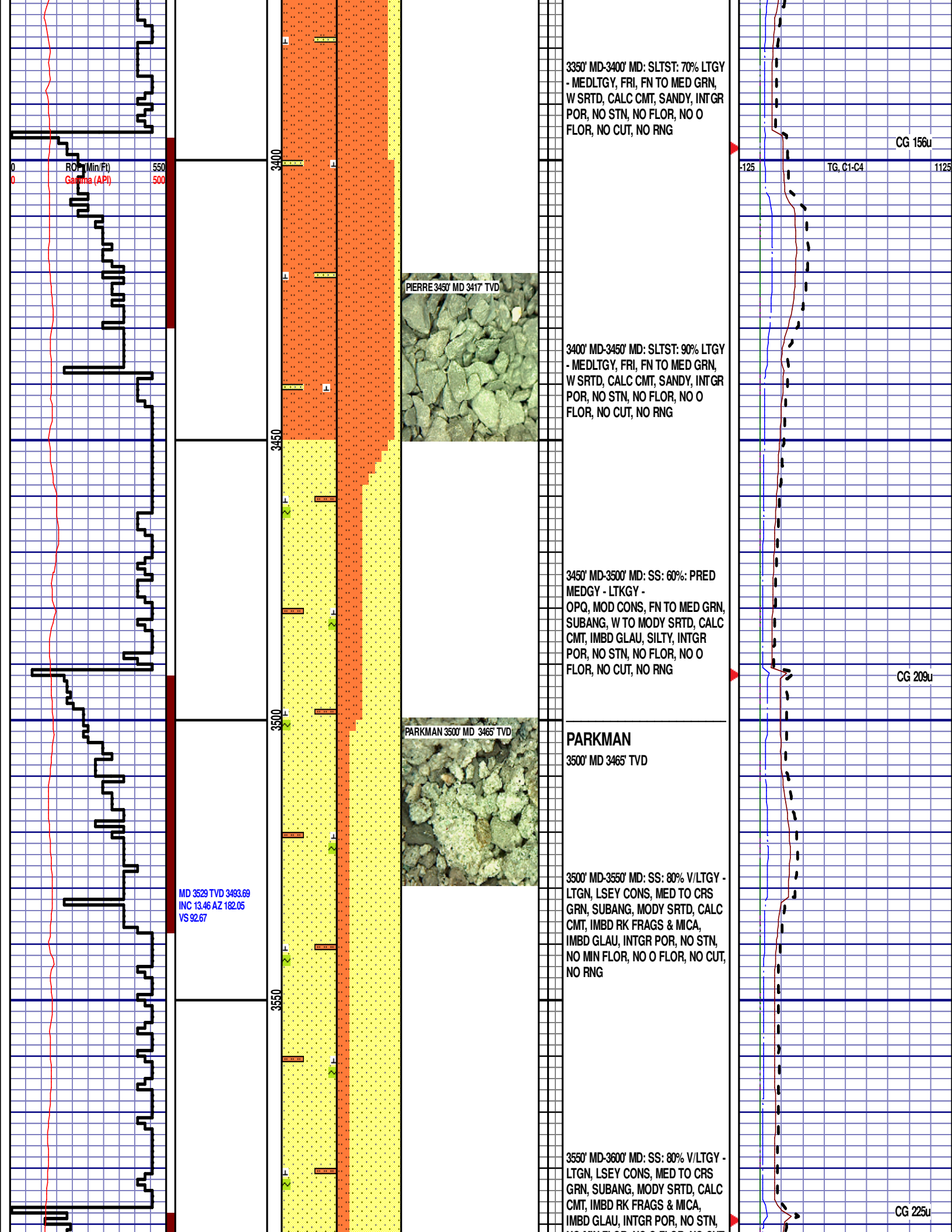
TG, C1-C4

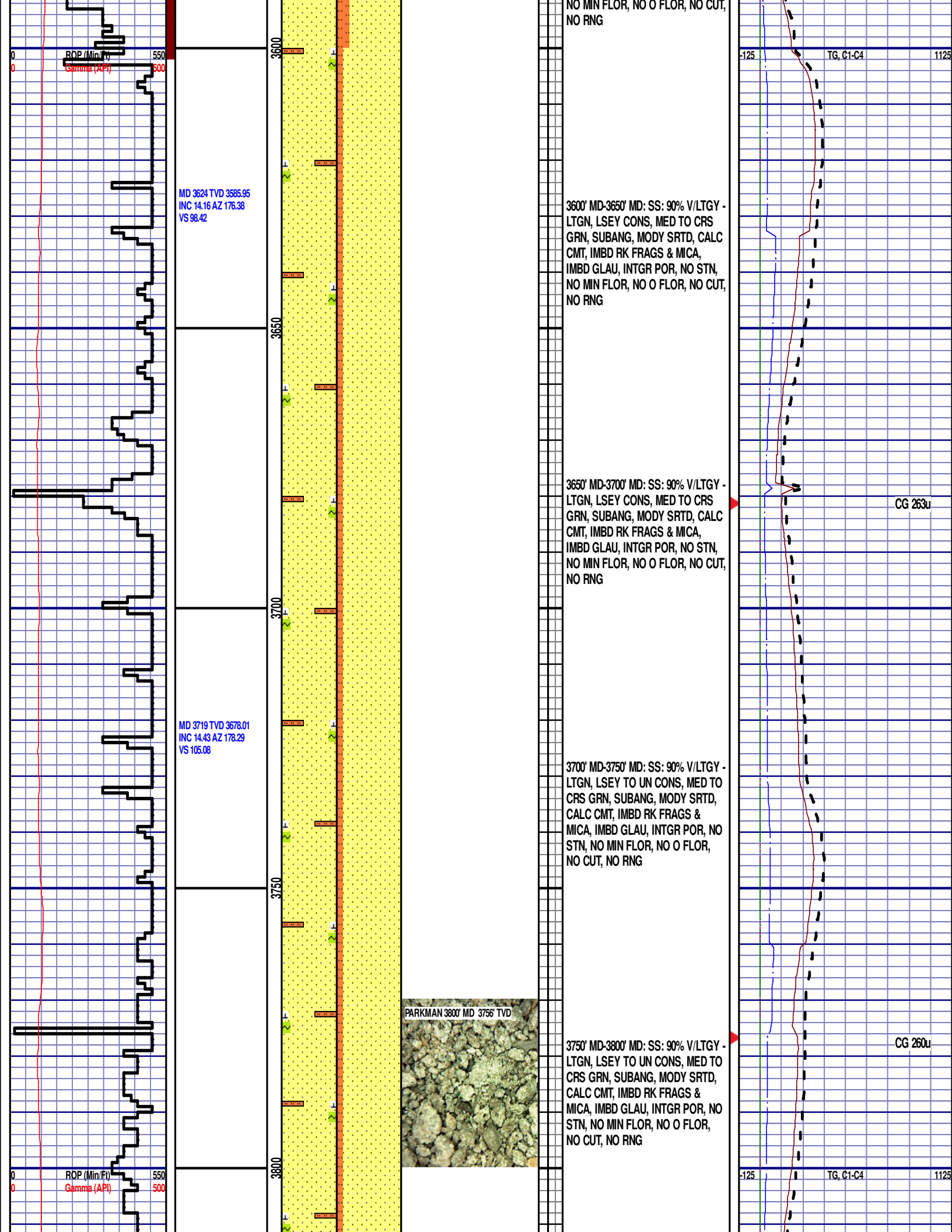
1125

CG 135u

CG 131u







MD 3814 TVD 3769.7  
INC 15.9 AZ 179.4  
VS 111.5

MD 3909 TVD 3860.91  
INC 16.55 AZ 176.63  
VS 118.75

MD 4004 TVD 3952.57  
INC 13.9 AZ 172.76  
VS 126.86

ROP (Min/Ft)  
Gamma (API)

3850

3900

3950

4000

3800' MD-3850' MD: SS: 90% V/LTGY -  
LTGN, LSEY TO UN CONS, MED TO  
CRS GRN, SUBANG, MODY SRTD,  
CALC CMT, IMBD RK FRAGS &  
MICA, IMBD GLAU, INTGR POR, NO  
STN, NO MIN FLOR, NO O FLOR,  
NO CUT, NO RNG

3850' MD-3900' MD: SS: 90% V/LTGY -  
LTGN, LSEY TO UN CONS, MED TO  
CRS GRN, SUBANG, MODY SRTD,  
CALC CMT, IMBD RK FRAGS &  
MICA, IMBD GLAU, INTGR POR, NO  
STN, NO MIN FLOR, NO O FLOR,  
NO CUT, NO RNG

3900' MD-3950' MD: SS: 70% V/LTGY -  
LTGN, MOD CONS, MED TO CRS  
GRN, SUBANG, MODY SRTD, CALC  
CMT, IMBD RK FRAGS & MICA,  
IMBD GLAU, INTGR POR, NO STN,  
NO MIN FLOR, NO O FLOR, NO CUT,  
NO RNG

3950' MD-4000' MD: SS: 50% WH -  
MEDLTGY, LSEY TO UN CONS, MED  
TO CRS GRN, ANG, MODY SRTD,  
CALC CMT, IMBD RK FRAGS &  
MICA, SILTY, INTGR POR, NO STN,  
MOD LTOR FLOR, NO O FLOR,  
WEAK LZY CUT, LT BLSHWT RNG

SUSSEX 4000' MD 3949' TVD



SUSSEX  
4000' MD 3949' TVD

4000' MD-4050' MD: SS: 50% WH -  
MEDLTGY, LSEY TO UN CONS, MED

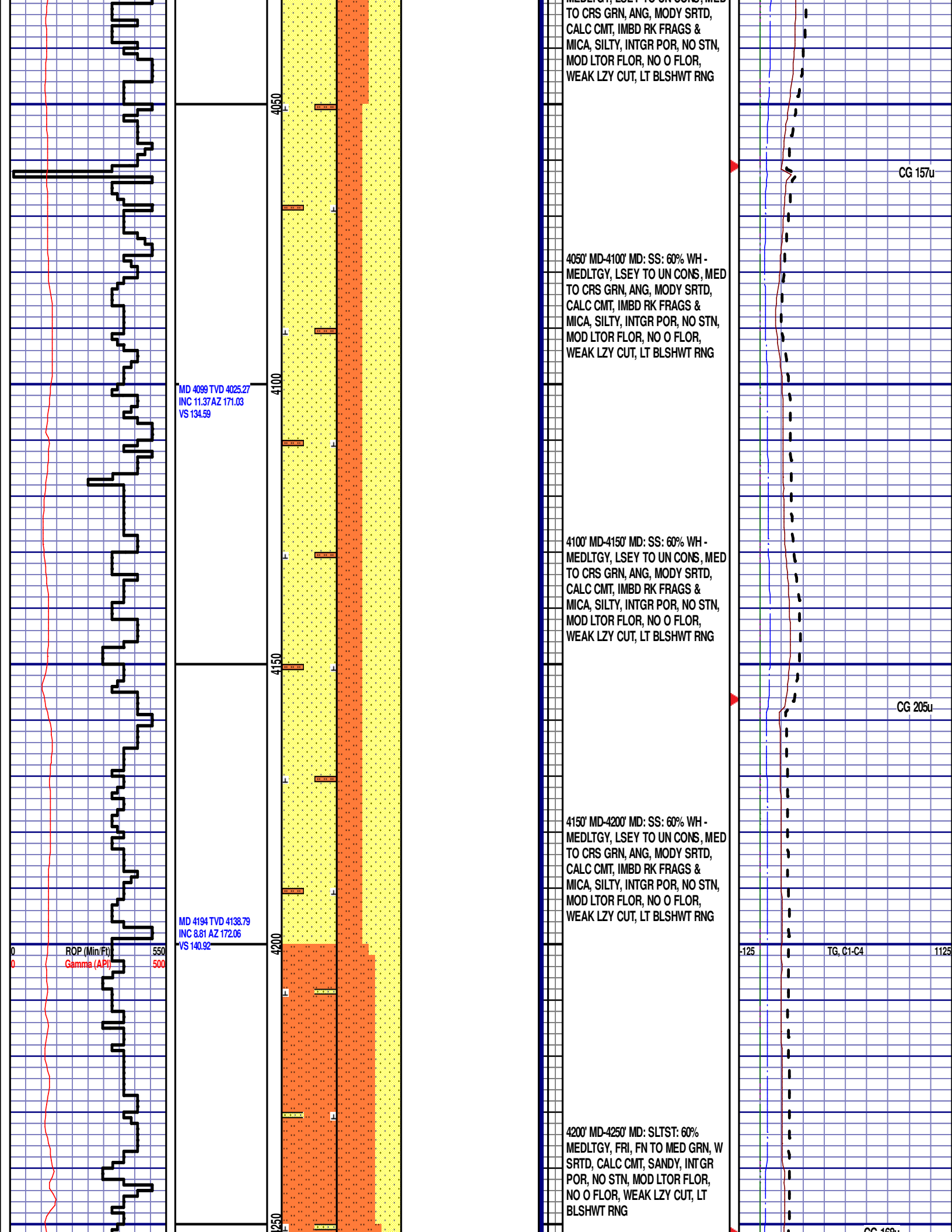
CG 213u

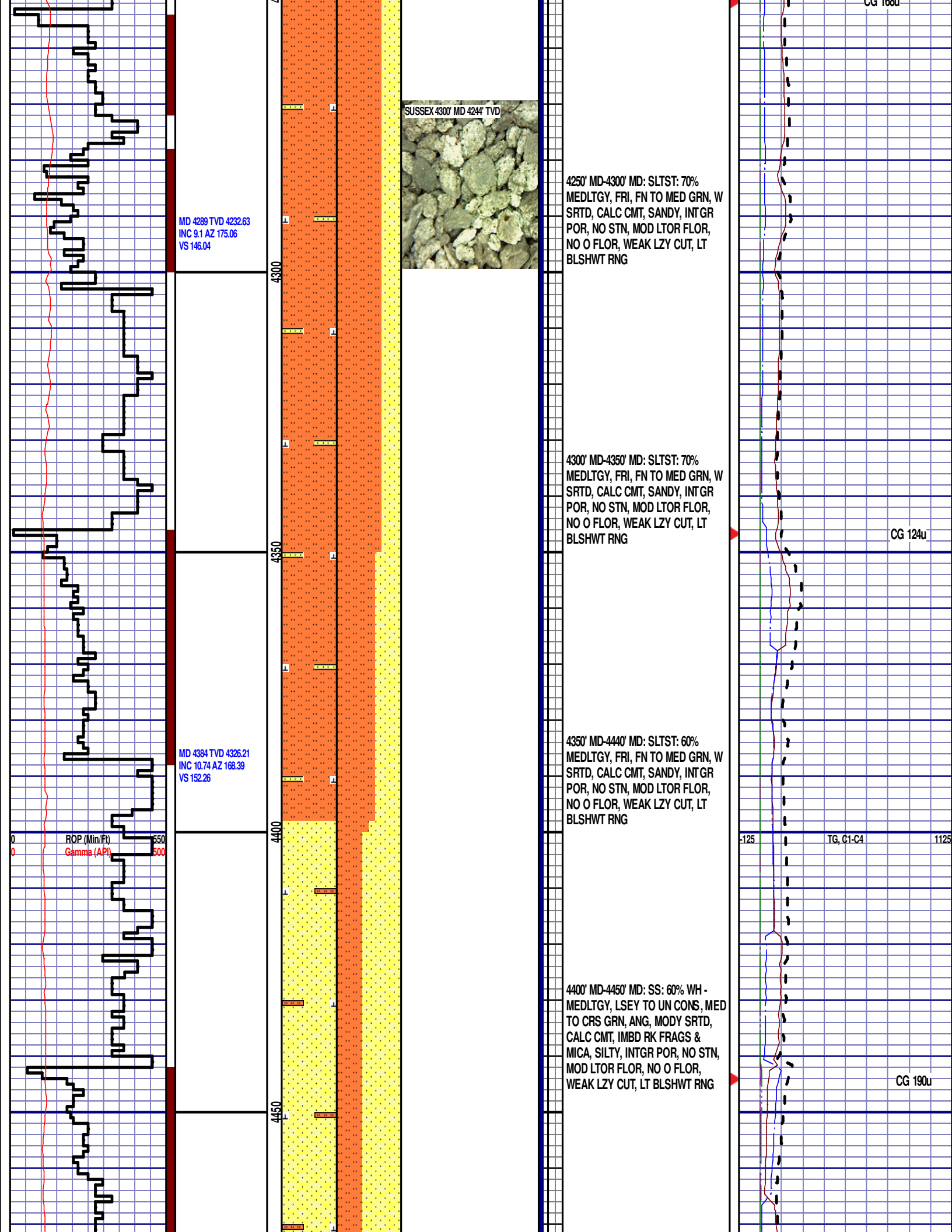
DEPTH 3909'  
WT 8.85  
VIS 27  
PH 9.5  
FIL 36.6  
CL 2400  
CAL 100  
H2O 96.5  
OIL 0.0  
LGS 23.62  
GEL 1/2/3  
PV 2  
YP 3  
CK 1/0  
SOL 3.2

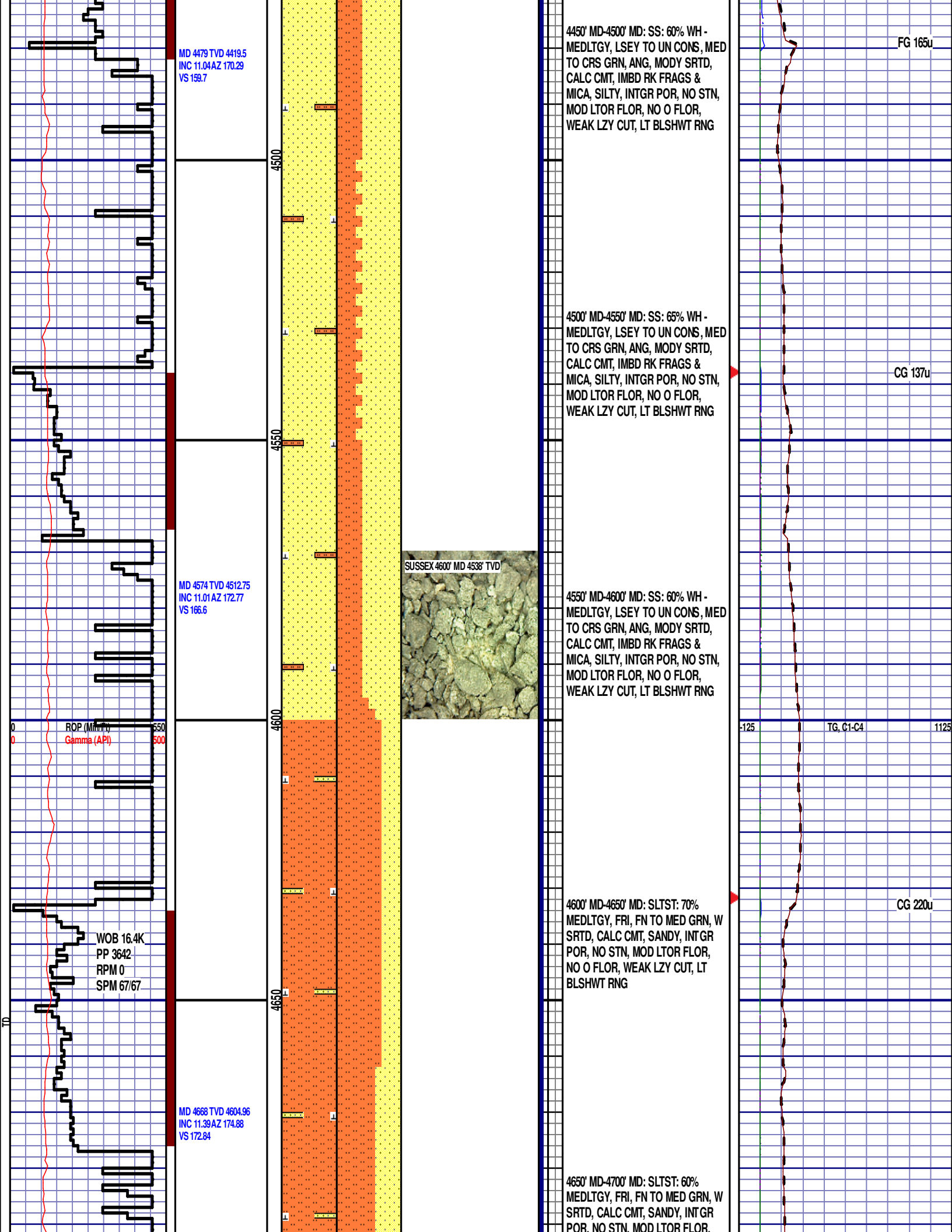
CG 194u

-125 TG, C1-C4 1125









MD 4479 TVD 4419.5  
INC 11.04AZ 170.29  
VS 159.7

4450' MD-4500' MD: SS: 60% WH -  
MEDLTGY, LSEY TO UN CONS, MED  
TO CRS GRN, ANG, MODY SRTD,  
CALC CMT, IMBD RK FRAGS &  
MICA, SILTY, INTGR POR, NO STN,  
MOD LTOR FLOR, NO O FLOR,  
WEAK LZY CUT, LT BLSHWT RNG

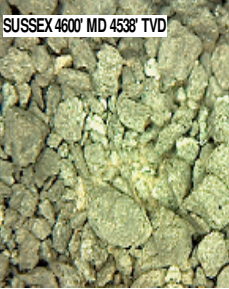
FG 165u

4500' MD-4550' MD: SS: 65% WH -  
MEDLTGY, LSEY TO UN CONS, MED  
TO CRS GRN, ANG, MODY SRTD,  
CALC CMT, IMBD RK FRAGS &  
MICA, SILTY, INTGR POR, NO STN,  
MOD LTOR FLOR, NO O FLOR,  
WEAK LZY CUT, LT BLSHWT RNG

CG 137u

MD 4574 TVD 4512.75  
INC 11.01AZ 172.77  
VS 166.6

SUSSEX 4600' MD 4538' TVD



4550' MD-4600' MD: SS: 60% WH -  
MEDLTGY, LSEY TO UN CONS, MED  
TO CRS GRN, ANG, MODY SRTD,  
CALC CMT, IMBD RK FRAGS &  
MICA, SILTY, INTGR POR, NO STN,  
MOD LTOR FLOR, NO O FLOR,  
WEAK LZY CUT, LT BLSHWT RNG

ROP (Min/T)  
Gamma (API)

-125 TG, C1-C4 1125

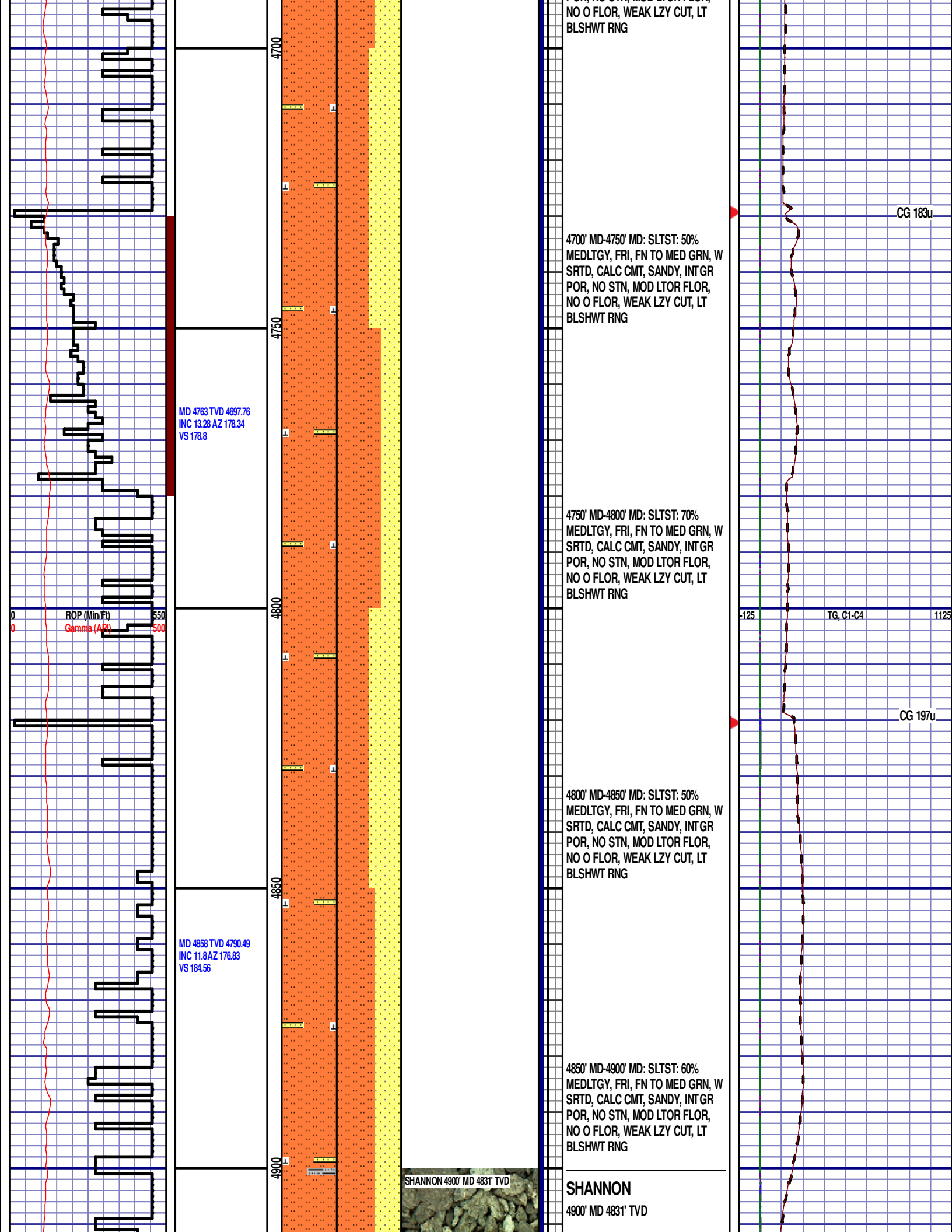
WOB 16.4K  
PP 3642  
RPM 0  
SPM 67/67

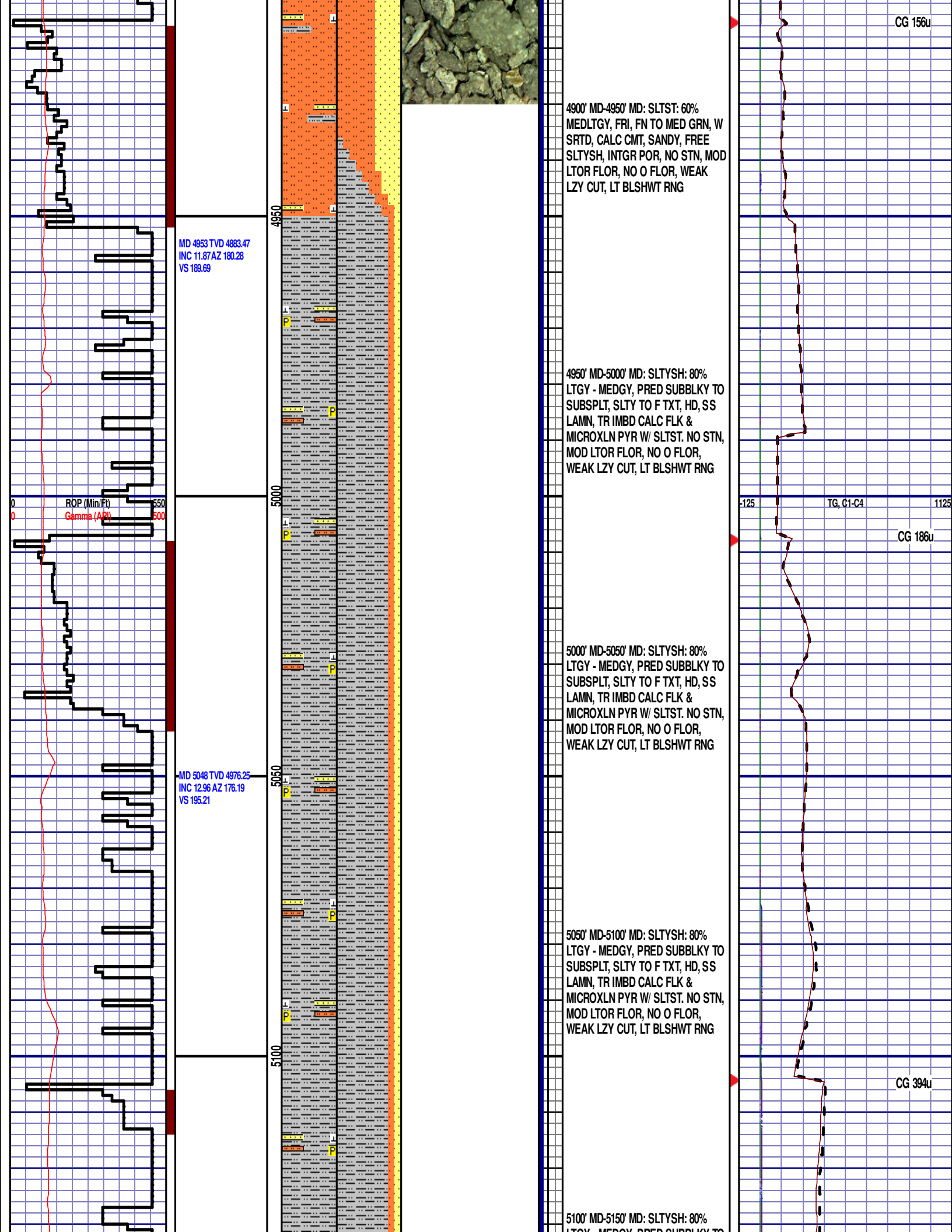
4600' MD-4650' MD: SLTST: 70%  
MEDLTGY, FRI, FN TO MED GRN, W  
SRTD, CALC CMT, SANDY, INTGR  
POR, NO STN, MOD LTOR FLOR,  
NO O FLOR, WEAK LZY CUT, LT  
BLSHWT RNG

CG 220u

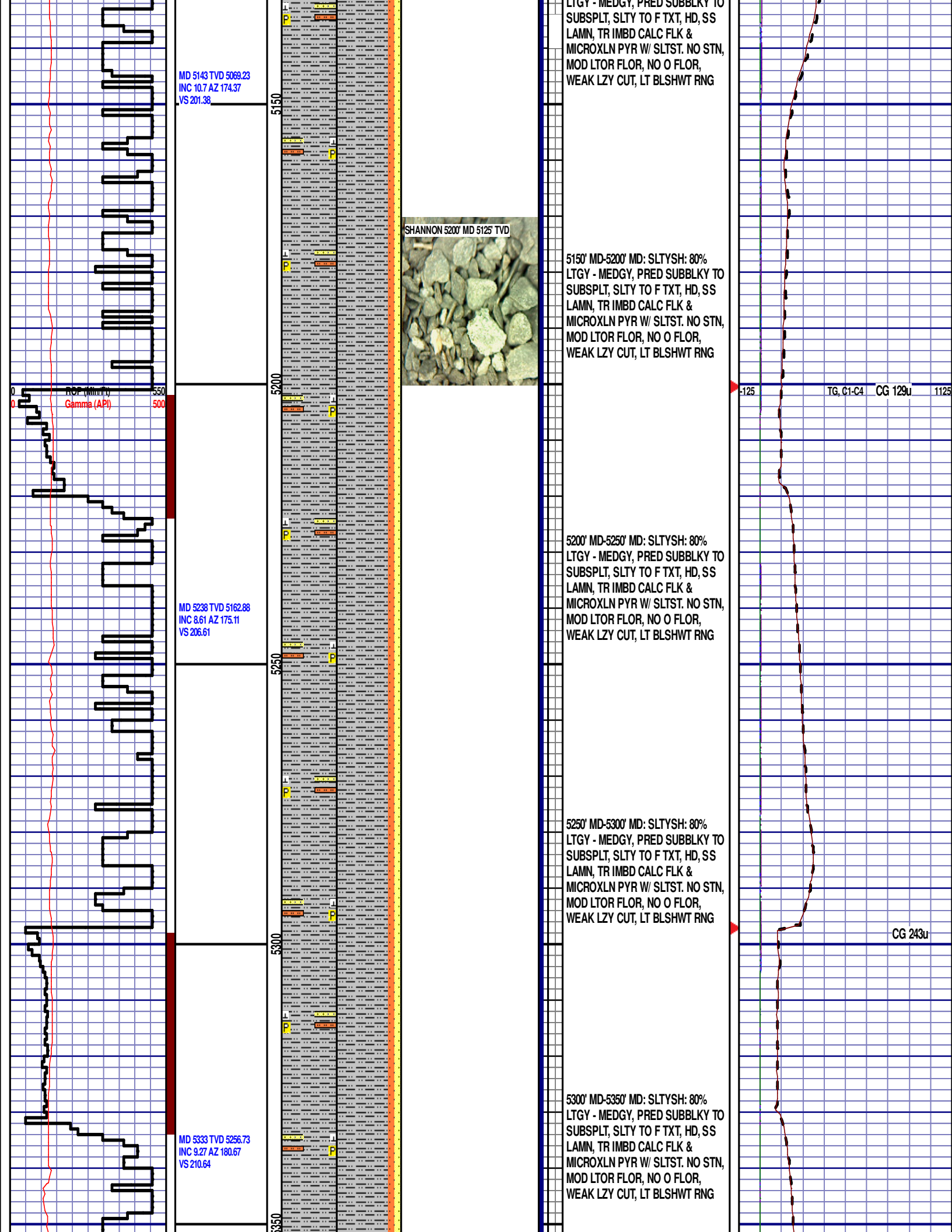
MD 4668 TVD 4604.96  
INC 11.39AZ 174.88  
VS 172.84

4650' MD-4700' MD: SLTST: 60%  
MEDLTGY, FRI, FN TO MED GRN, W  
SRTD, CALC CMT, SANDY, INTGR  
POR, NO STN, MOD LTOR FLOR,









MD 5143 TVD 5069.23  
INC 10.7 AZ 174.37  
VS 201.38

ROP (Min/Ft)  
Gamma (API)

MD 5238 TVD 5162.88  
INC 8.61 AZ 175.11  
VS 206.61

MD 5333 TVD 5256.73  
INC 9.27 AZ 180.67  
VS 210.64

SHANNON 5200' MD 5125' TVD



5150' MD-5200' MD: SLTYSH: 80%  
LTGY - MEDGY, PRED SUBBLKY TO  
SUBSPLT, SLTY TO F TXT, HD, SS  
LAMN, TR IMBD CALC FLK &  
MICROXLN PYR W/ SLTST. NO STN,  
MOD LTOR FLOR, NO O FLOR,  
WEAK LZY CUT, LT BLSHWT RNG

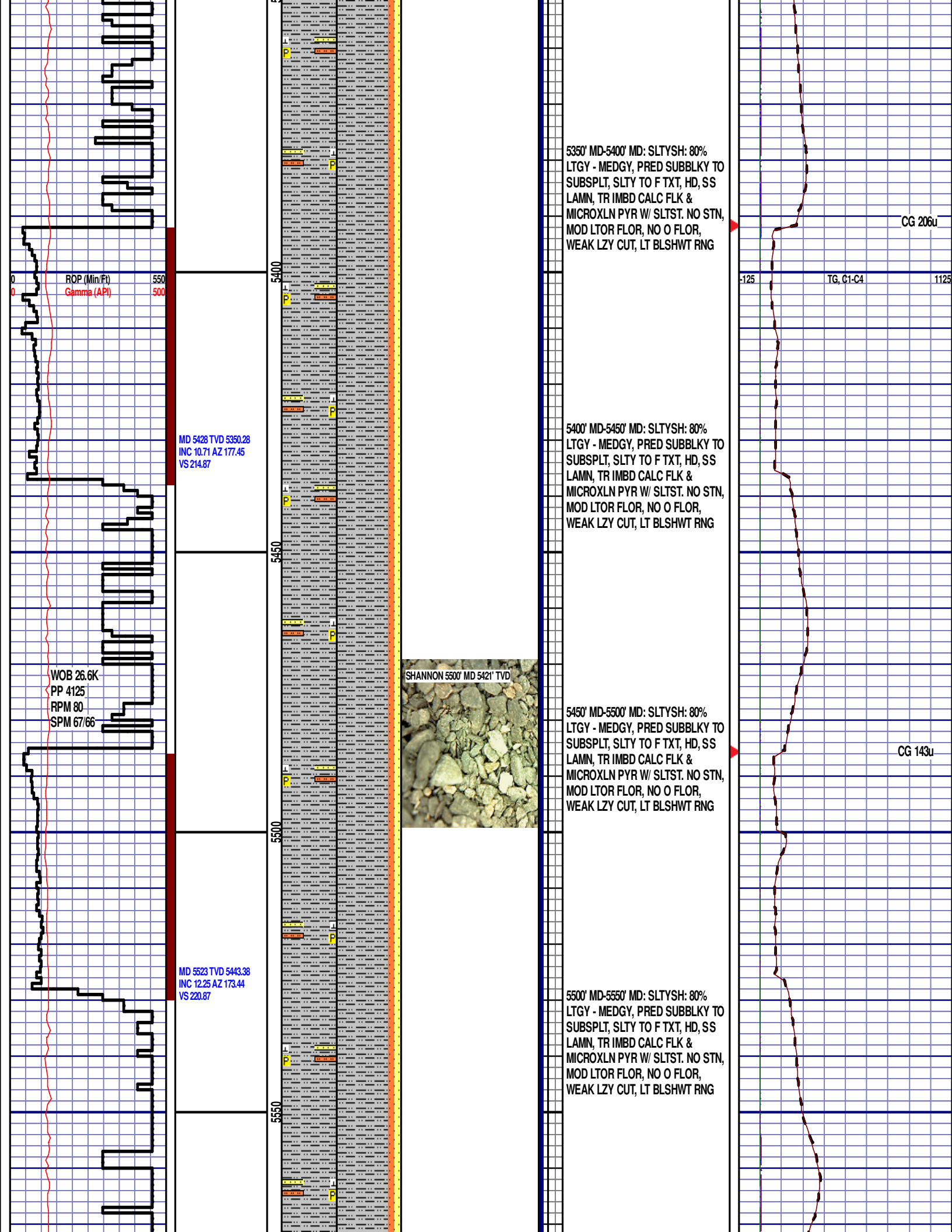
5200' MD-5250' MD: SLTYSH: 80%  
LTGY - MEDGY, PRED SUBBLKY TO  
SUBSPLT, SLTY TO F TXT, HD, SS  
LAMN, TR IMBD CALC FLK &  
MICROXLN PYR W/ SLTST. NO STN,  
MOD LTOR FLOR, NO O FLOR,  
WEAK LZY CUT, LT BLSHWT RNG

5250' MD-5300' MD: SLTYSH: 80%  
LTGY - MEDGY, PRED SUBBLKY TO  
SUBSPLT, SLTY TO F TXT, HD, SS  
LAMN, TR IMBD CALC FLK &  
MICROXLN PYR W/ SLTST. NO STN,  
MOD LTOR FLOR, NO O FLOR,  
WEAK LZY CUT, LT BLSHWT RNG

5300' MD-5350' MD: SLTYSH: 80%  
LTGY - MEDGY, PRED SUBBLKY TO  
SUBSPLT, SLTY TO F TXT, HD, SS  
LAMN, TR IMBD CALC FLK &  
MICROXLN PYR W/ SLTST. NO STN,  
MOD LTOR FLOR, NO O FLOR,  
WEAK LZY CUT, LT BLSHWT RNG

TG, C1-C4 CG 129u 1125

CG 243u



ROP (Min/Ft)  
Gamma (API)

MD 5428 TVD 5350.28  
INC 10.71 AZ 177.45  
VS 214.87

WOB 26.6K  
PP 4125  
RPM 80  
SPM 67/66

MD 5523 TVD 5443.38  
INC 12.25 AZ 173.44  
VS 220.87

SHANNON 5500' MD 5421' TVD



5350' MD-5400' MD: SLTYSH: 80%  
LTGY - MEDGY, PRED SUBBLKY TO  
SUBSPLT, SLTY TO F TXT, HD, SS  
LAMN, TR IMBD CALC FLK &  
MICROXLN PYR W/ SLTST. NO STN,  
MOD LTOR FLOR, NO O FLOR,  
WEAK LZY CUT, LT BLSHWT RNG

CG 206u

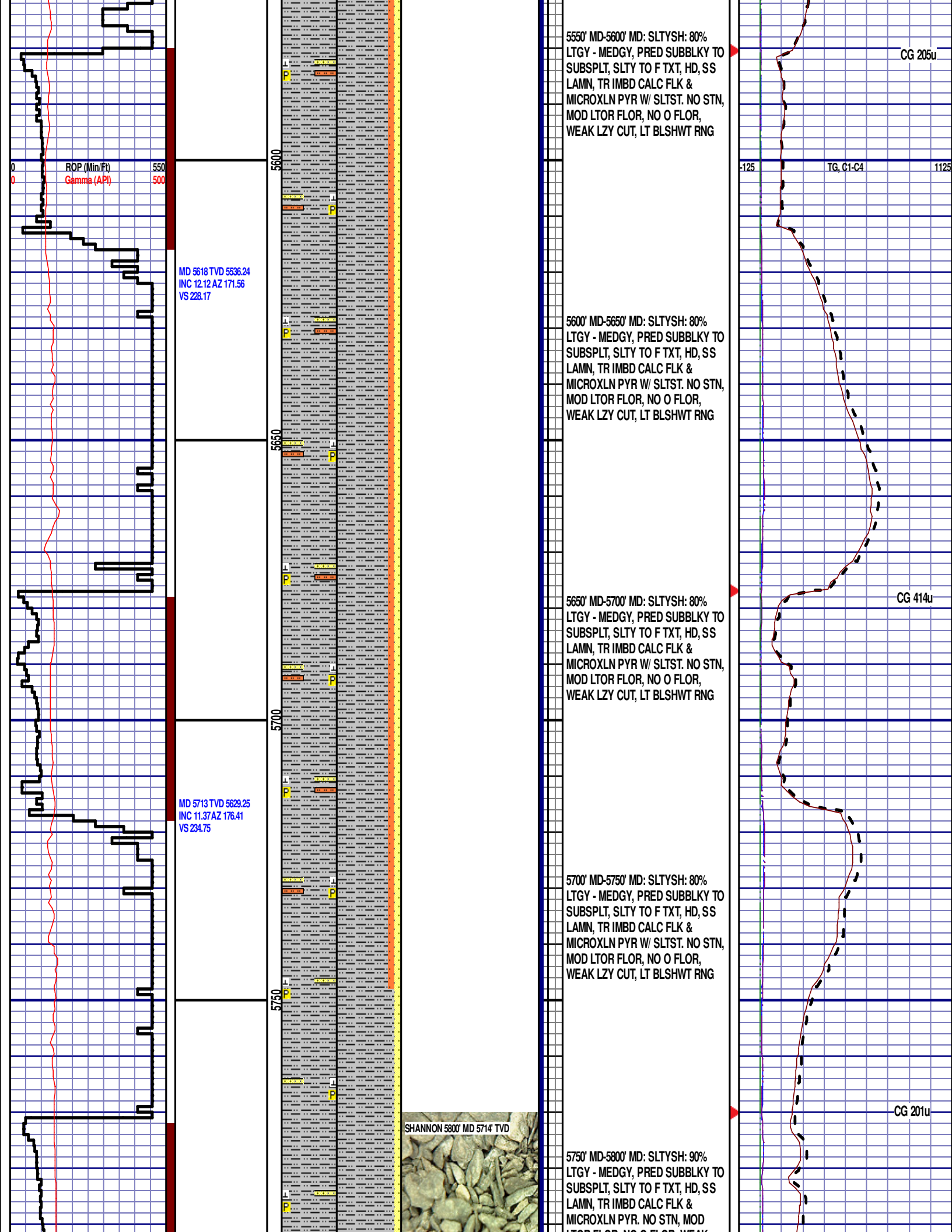
5400' MD-5450' MD: SLTYSH: 80%  
LTGY - MEDGY, PRED SUBBLKY TO  
SUBSPLT, SLTY TO F TXT, HD, SS  
LAMN, TR IMBD CALC FLK &  
MICROXLN PYR W/ SLTST. NO STN,  
MOD LTOR FLOR, NO O FLOR,  
WEAK LZY CUT, LT BLSHWT RNG

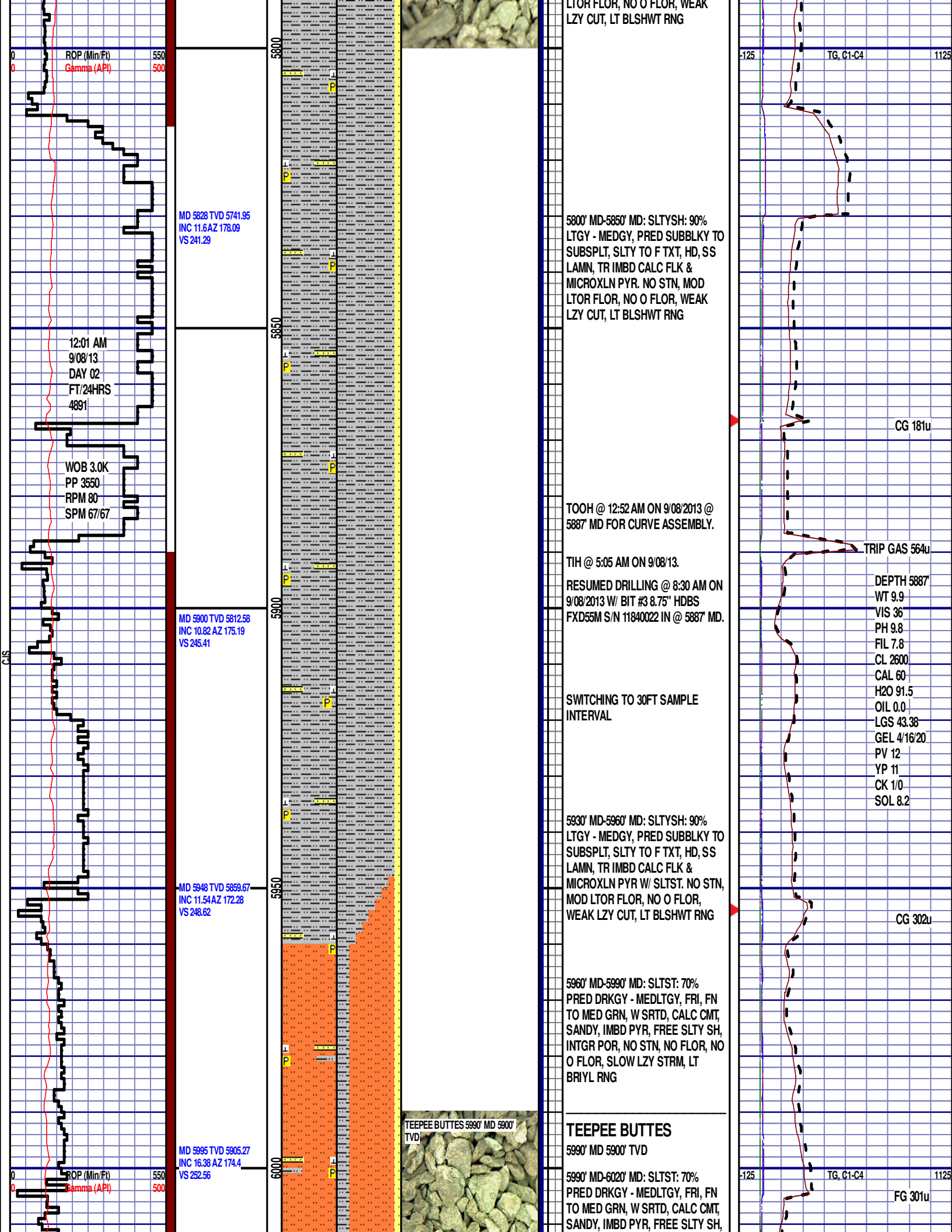
TG, C1-C4

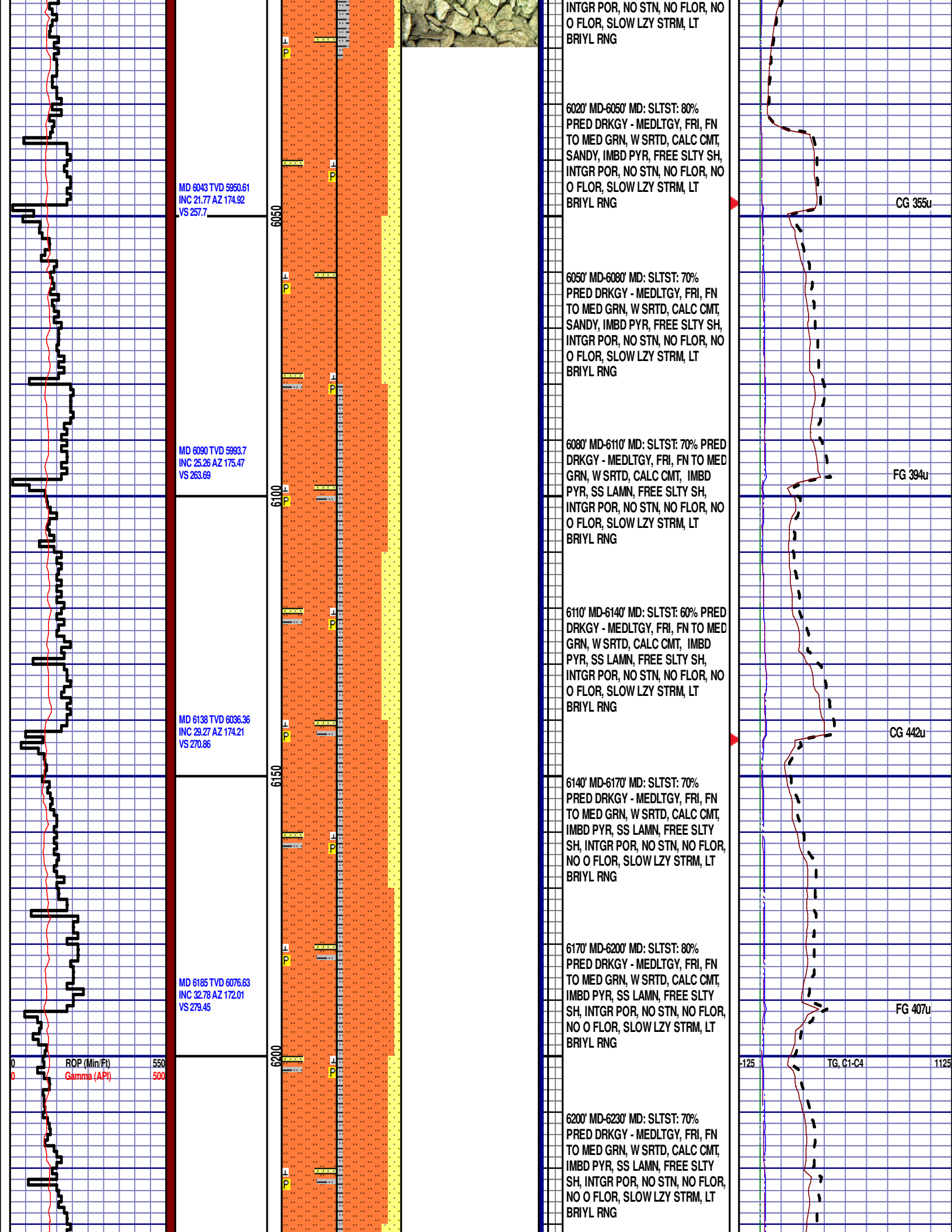
5450' MD-5500' MD: SLTYSH: 80%  
LTGY - MEDGY, PRED SUBBLKY TO  
SUBSPLT, SLTY TO F TXT, HD, SS  
LAMN, TR IMBD CALC FLK &  
MICROXLN PYR W/ SLTST. NO STN,  
MOD LTOR FLOR, NO O FLOR,  
WEAK LZY CUT, LT BLSHWT RNG

CG 143u

5500' MD-5550' MD: SLTYSH: 80%  
LTGY - MEDGY, PRED SUBBLKY TO  
SUBSPLT, SLTY TO F TXT, HD, SS  
LAMN, TR IMBD CALC FLK &  
MICROXLN PYR W/ SLTST. NO STN,  
MOD LTOR FLOR, NO O FLOR,  
WEAK LZY CUT, LT BLSHWT RNG









MD 6233 TVD 6116.22  
INC 36.09 AZ 168.23  
VS 290.4

MD 6280 TVD 6153.74  
INC 38.04 AZ 161.66  
VS 304.1

MD 6328 TVD 6191.58  
INC 38.03 AZ 152.38  
VS 321.78

MD 6375 TVD 6228.71  
INC 37.67 AZ 144.08  
VS 342.35

MD 6423 TVD 6266.65  
INC 37.96 AZ 136.86  
VS 365.93

ROP (Min/Ft)  
Gamma (API)

550  
500

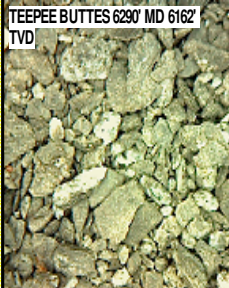
6250

6300

6350

6400

6450



6230' MD-6260' MD: SLTST: 60%  
PRED DRKGY - MEDLTGY, FRI, FN  
TO MED GRN, W SRTD, CALC CMT,  
IMBD PYR, SS LAMN, FREE SLTY  
SH, INTGR POR, NO STN, NO FLOR,  
NO O FLOR, SLOW LZ Y STRM, LT  
BRIYL RNG

6260' MD-6290' MD: SLTST: 70%  
PRED DRKGY - MEDLTGY, FRI, FN  
TO MED GRN, W SRTD, CALC CMT,  
IMBD PYR, SS LAMN, FREE SLTY  
SH, INTGR POR, NO STN, NO FLOR,  
NO O FLOR, SLOW LZ Y STRM, LT  
BRIYL RNG

6290' MD-6320' MD: SLTST: 70%  
PRED DRKGY - MEDLTGY, FRI, FN  
TO MED GRN, W SRTD, CALC CMT,  
IMBD PYR, SS LAMN, INTGR POR,  
NO STN, NO FLOR, NO O FLOR,  
SLOW LZ Y STRM, LT BRIYL RNG

6320' MD-6350' MD: SLTST: 65%  
PRED DRKGY - MEDLTGY, FRI, FN  
TO MED GRN, W SRTD, CALC CMT,  
IMBD PYR, SS LAMN, INTGR POR,  
NO STN, NO FLOR, NO O FLOR,  
SLOW LZ Y STRM, LT BRIYL RNG

6350' MD-6380' MD: SLTY SH: 50%  
MEDDRKGY - MEDLTGY, BLKY TO  
SUBBLKY, GRTY TO SLTY TXT, FRM  
TO BRIT, SLTST & SS LAMN, FREE  
CAL, NO STN, 5% FLOR, NO O  
FLOR, LOW LZ Y STRM, LT BRIYL  
RNG

6380' MD-6410' MD: SLTY SH: 60%  
MEDDRKGY - MEDLTGY, BLKY TO  
SUBBLKY, GRTY TO SLTY TXT, FRM  
TO BRIT, SLTST & SS LAMN, FREE  
CAL, NO STN, 5% FLOR, NO O  
FLOR, LOW LZ Y STRM, LT BRIYL  
RNG

6410' MD-6440' MD: SLTST: 80%  
PRED DRKGY - MEDLTGY, FRI, FN  
TO MED GRN, W SRTD, CALC CMT,  
IMBD SS LAMN, IMBD PYR, FREE  
SH, INTGR POR, NO STN, NO FLOR,  
NO O FLOR, SLOW LZ Y STRM, LT  
BRIYL RNG

6440' MD-6470' MD: SLTST: 70%

CG 343u

FG 382u

DEPTH 6328'  
WT 10.5  
VIS 38  
PH 9.9  
FIL 8.6  
CL 2600  
CAL 60  
H2O 88.5  
OIL 0.0  
LGS 57.28  
GEL 5/29/40  
PV 13  
YP 13  
CK 1/0  
SOL 11.2

CG 305u

FG 429u

-125 TG, C1-C4 1125

CG 429u

FG 330u

