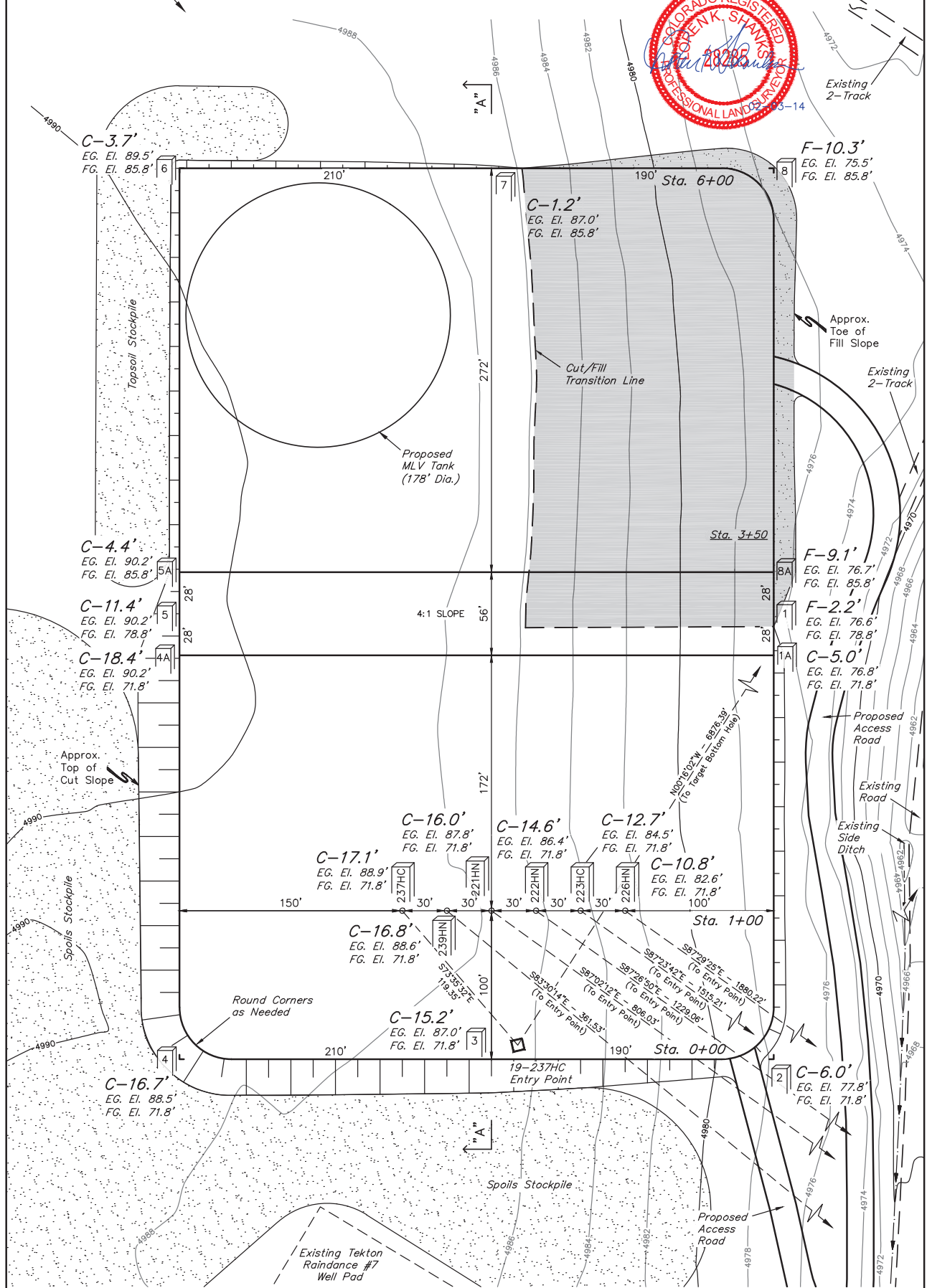


GREAT WESTERN OIL & GAS COMPANY
CONSTRUCTION LAYOUT FOR
 RAINDANCE FD 19-237HC, 19-239HN,
 20-221HN, 20-222HN, 20-223HC & 20-226HN
 SECTION 30, T6N, R67W, 6th P.M.
 SE 1/4 SE 1/4

FIGURE #1

SCALE: 1" = 60'
 DATE: 07-15-13
 DRAWN BY: J.W.
 REVISED: 10-04-13 J.S.
 REVISED: 10-25-13 J.W.
 REVISED: 01-28-14 H.K.W.
 REVISED: 02-03-14 J.W.



Elev. Ungraded Ground At 20-221HN Loc. Stake = 4987.8'
 FINISHED GRADE ELEV. AT 20-221HN LOC. STAKE = 4971.8'

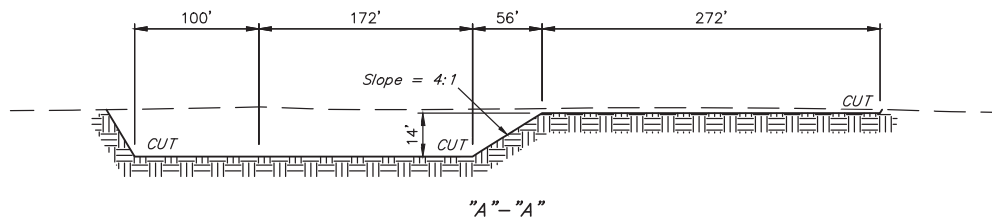
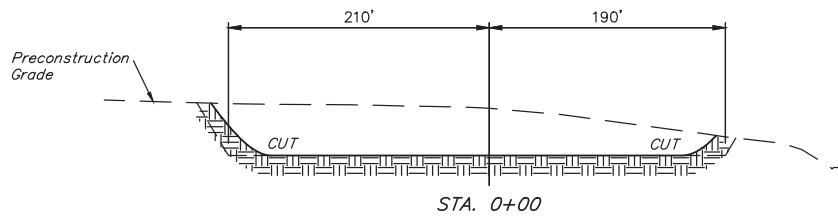
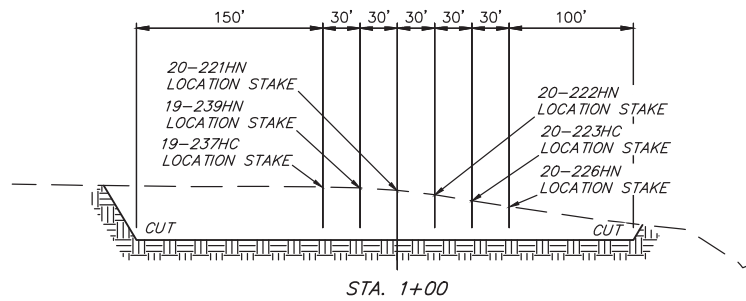
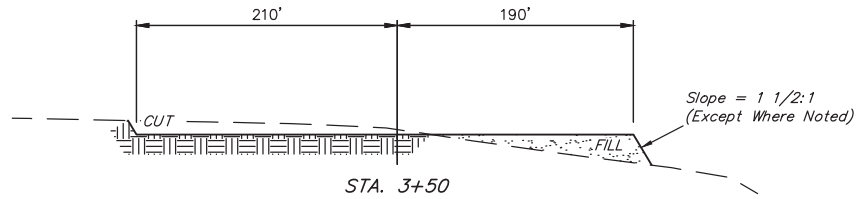
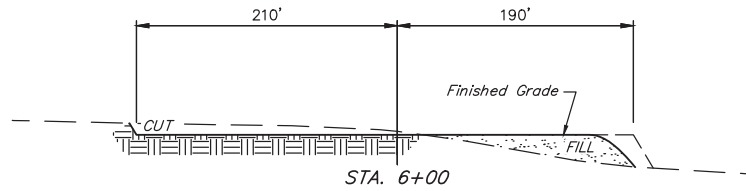
UINTAH ENGINEERING & LAND SURVEYING
 85 So. 200 East • Vernal, Utah 84078 • (435) 789-1017

1" = 40'
X-Section
Scale
1" = 100'

DATE: 07-15-13
DRAWN BY: J.W.
REVISED: 10-04-13 J.S.
REVISED: 10-25-13 J.W.

GREAT WESTERN OIL & GAS COMPANY
CONSTRUCTION LAYOUT CROSS SECTIONS FOR
RAINDANCE FD 19-237HC, 19-239HN,
20-221HN, 20-222HN, 20-223HC & 20-226HN
SECTION 30, T6N, R67W, 6th P.M.
SE 1/4 SE 1/4

FIGURE #2



NOTE:

Topsoil should not be
Stripped Below Finished
Grade on Substructure Area.

* NOTE:
FILL QUANTITY INCLUDES
5% FOR COMPACTION

APPROXIMATE YARDAGES

(6") Topsoil Stripping = 4,930 Cu. Yds.
Remaining Location = 70,340 Cu. Yds.
TOTAL CUT = 75,270 CU. YDS.
FILL = 10,500 CU. YDS.

EXCESS MATERIAL = 64,770 Cu. Yds.
Topsoil = 4,930 Cu. Yds.
EXCESS UNBALANCE = 59,840 Cu. Yds.
(After Interim Rehabilitation)

APPROXIMATE ACREAGE
WELL SITE DISTURBANCE = ± 9.618 ACRES
ACCESS ROAD DISTURBANCE = ± 0.702 ACRES
TOTAL = ± 10.320 ACRES

UINTAH ENGINEERING & LAND SURVEYING
85 So. 200 East * Vernal, Utah 84078 * (435) 789-1017