

Synergy Resources

Well Name: **SRC Eberle P-32NHZ**

Surface Location: SRC Eberle 14-32-31CHZM Pad Sec.32-T1N-R66W
North American Datum 1983 , US State Plane 1983 , Colorado Northern Zone

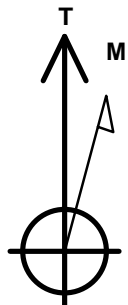
Ground Elevation: 5032.0

+N/-S	+E/-W	Northing	Easting	Latitude	Longitude	Slot
0.0	0.0	1245146.29	3197602.30	40.004155	-104.794614	

Ensign Rig #134 - RKB - 13' WELL @ 5045.0ft (Ensign Rig #134 - RKB - 13')

WELLBORE TARGET DETAILS

Name	TVD	+N/-S	+E/-W	Shape Point
SHL 1355'FSL & 869'FEL	2.0	0.0	0.0	Point
BHL 1575'FSL & 475'FWL	7482.0	217.5	-3943.9	Point



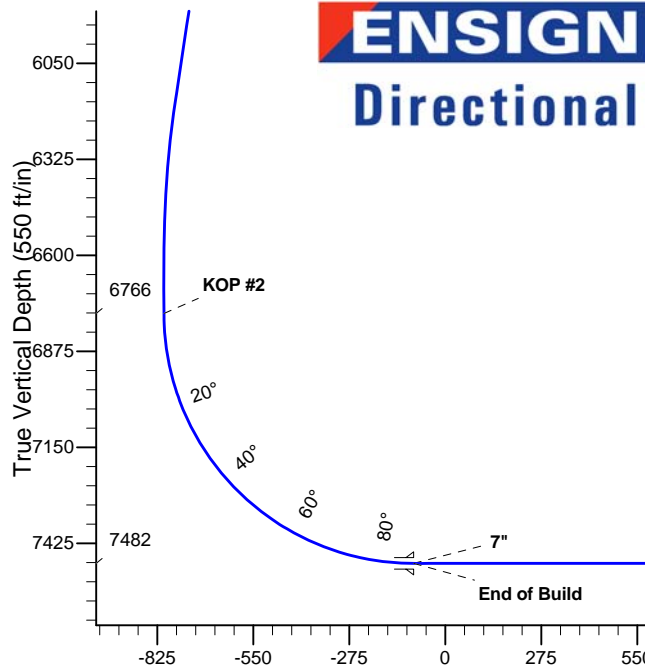
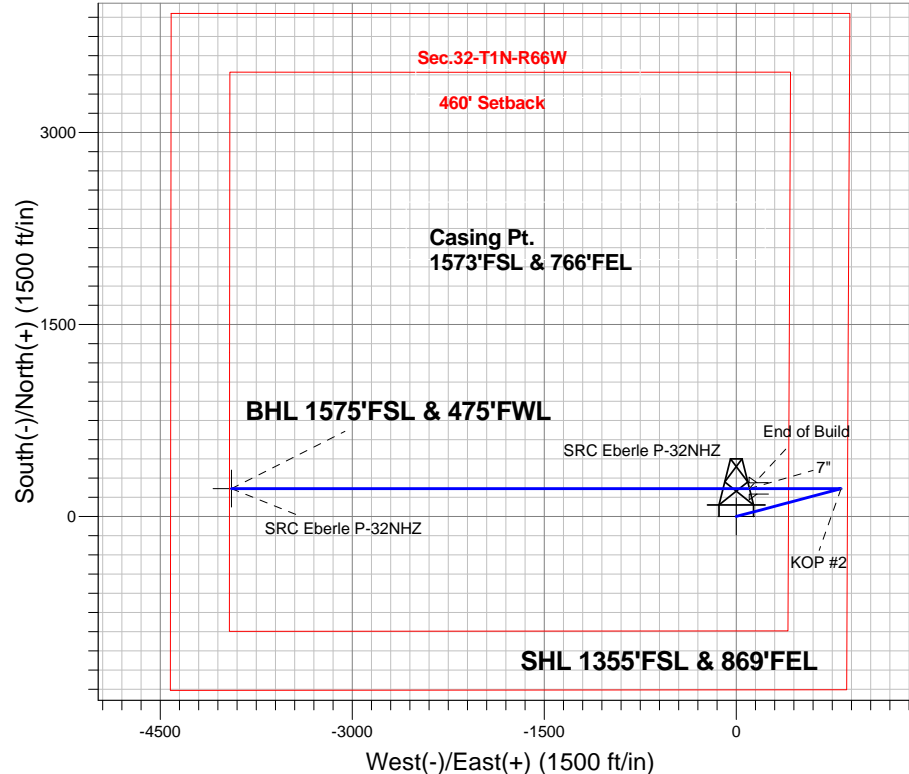
Azimuths to True North
Magnetic North: 8.48°

Magnetic Field
Strength: 52629.1snT
Dip Angle: 66.63°
Date: 3/14/2014
Model: IGRF2010

SRC Eberle 14-32-31CHZM Pad Sec.32-T1N-R66W
SRC Eberle P-32NHZ
Plan #2 (3-14-14)
14:54, March 17 2014

ANNOTATIONS

TVD	MD	Annotation
800.0	800.0	KOP #1
6765.8	6830.6	KOP #2
7482.0	7955.7	End of Build



SECTION DETAILS

Sec	MD	Inc	Azi	TVD	+N/-S	+E/-W	DLeg	TFace	VSec	Target
1	0.0	0.00	0.00	0.0	0.0	0.0	0.00	0.00	0.0	
2	800.0	0.00	0.00	800.0	0.0	0.0	0.00	0.00	0.0	
3	1250.1	9.00	75.13	1248.3	9.1	34.1	2.00	75.13	-33.6	
4	6214.7	9.00	75.13	6151.7	208.4	784.9	0.00	0.00	-772.2	
5	6664.8	0.00	0.00	6600.0	217.5	819.0	2.00	180.00	-805.8	
6	6830.7	0.00	0.00	6765.8	217.5	819.0	0.00	0.00	-805.8	
7	7955.7	90.00	270.00	7482.0	217.5	102.8	8.00	270.00	-90.7	
8	12002.3	90.00	270.00	7482.0	217.5	-3943.9	0.00	0.00	3949.9	BHL 1575'FSL & 475'FWL

BHL 1575'FSL & 475'FWL

Vertical Section at 273.16° (550 ft/in)



Synergy Resources

SEC.32-T1N-R66W

SRC Eberle 14-32-31CHZM Pad Sec.32-T1N-R66W

SRC Eberle P-32NHZ

Wellbore #1

Plan: Plan #2 (3-14-14)

Standard Planning Report

17 March, 2014

Database:	landmark	Local Co-ordinate Reference:	Well SRC Eberle P-32NHZ
Company:	Synergy Resources	TVD Reference:	WELL @ 5045.0ft (Ensign Rig #134 - RKB - 13')
Project:	SEC.32-T1N-R66W	MD Reference:	WELL @ 5045.0ft (Ensign Rig #134 - RKB - 13')
Site:	SRC Eberle 14-32-31CHZM Pad Sec.32-T1N-R66W	North Reference:	True
Well:	SRC Eberle P-32NHZ	Survey Calculation Method:	Minimum Curvature
Wellbore:	Wellbore #1		
Design:	Plan #2 (3-14-14)		

Project	SEC.32-T1N-R66W, Weld County, Colorado		
Map System:	US State Plane 1983	System Datum:	Mean Sea Level
Geo Datum:	North American Datum 1983		Using Well Reference Point
Map Zone:	Colorado Northern Zone		Using geodetic scale factor

Site						SRC Eberle 14-32-31CHZM Pad Sec.32-T1N-R66W											
Site Position:						Northing:			1,245,145.79ft			Latitude:			40.004155		
From:			Lat/Long			Easting:			3,197,534.23ft			Longitude:			-104.794857		
Position Uncertainty:			0.0 ft			Slot Radius:			"			Grid Convergence:			0.46 °		

Well	SRC Eberle P-32NHZ					
Well Position	+N/-S	0.0 ft	Northing:	1,245,146.29 ft	Latitude:	40.004155
	+E/-W	68.1 ft	Easting:	3,197,602.30 ft	Longitude:	-104.794614
Position Uncertainty		0.0 ft	Wellhead Elevation:	ft	Ground Level:	5,032.0 ft

Wellbore	Wellbore #1
-----------------	-------------

Magnetics	Model Name	Sample Date	Declination (°)	Dip Angle (°)	Field Strength (nT)
	IGRF2010	3/14/2014	8.48	66.63	52,629

Design	Plan #2 (3-14-14)
---------------	-------------------

Audit Notes:				
Version:	Phase:	PROTOTYPE	Tie On Depth:	0.0
Vertical Section:	Depth From (TVD) (ft)	+N/-S (ft)	+E/-W (ft)	Direction (°)
	0.0	0.0	0.0	273.16

Plan Sections										
Measured Depth (ft)	Inclination (°)	Azimuth (°)	Vertical Depth (ft)	+N/-S (ft)	+E/-W (ft)	Dogleg Rate (°/100ft)	Build Rate (°/100ft)	Turn Rate (°/100ft)	TFO (°)	Target
0.0	0.00	0.00	0.0	0.0	0.0	0.00	0.00	0.00	0.00	
800.0	0.00	0.00	800.0	0.0	0.0	0.00	0.00	0.00	0.00	
1,250.1	9.00	75.13	1,248.3	9.1	34.1	2.00	2.00	0.00	75.13	
6,214.7	9.00	75.13	6,151.7	208.4	784.9	0.00	0.00	0.00	0.00	
6,664.8	0.00	0.00	6,600.0	217.5	819.0	2.00	-2.00	0.00	180.00	
6,830.7	0.00	0.00	6,765.8	217.5	819.0	0.00	0.00	0.00	0.00	
7,955.7	90.00	270.00	7,482.0	217.5	102.8	8.00	8.00	0.00	270.00	
12,002.3	90.00	270.00	7,482.0	217.5	-3,943.9	0.00	0.00	0.00	0.00	BHL 1575'FSL & 47

Database:	landmark	Local Co-ordinate Reference:	Well SRC Eberle P-32NHZ
Company:	Synergy Resources	TVD Reference:	WELL @ 5045.0ft (Ensign Rig #134 - RKB - 13')
Project:	SEC.32-T1N-R66W	MD Reference:	WELL @ 5045.0ft (Ensign Rig #134 - RKB - 13')
Site:	SRC Eberle 14-32-31CHZM Pad Sec.32-T1N-R66W	North Reference:	True
Well:	SRC Eberle P-32NHZ	Survey Calculation Method:	Minimum Curvature
Wellbore:	Wellbore #1		
Design:	Plan #2 (3-14-14)		

Planned Survey									
Measured Depth (ft)	Inclination (°)	Azimuth (°)	Vertical Depth (ft)	+N-S (ft)	+E-W (ft)	Vertical Section (ft)	Dogleg Rate (°/100ft)	Build Rate (°/100ft)	Turn Rate (°/100ft)
0.0	0.00	0.00	0.0	0.0	0.0	0.0	0.00	0.00	0.00
2.0	0.00	0.00	2.0	0.0	0.0	0.0	0.00	0.00	0.00
SHL 1355'FSL & 869'FEL									
100.0	0.00	0.00	100.0	0.0	0.0	0.0	0.00	0.00	0.00
200.0	0.00	0.00	200.0	0.0	0.0	0.0	0.00	0.00	0.00
300.0	0.00	0.00	300.0	0.0	0.0	0.0	0.00	0.00	0.00
400.0	0.00	0.00	400.0	0.0	0.0	0.0	0.00	0.00	0.00
500.0	0.00	0.00	500.0	0.0	0.0	0.0	0.00	0.00	0.00
600.0	0.00	0.00	600.0	0.0	0.0	0.0	0.00	0.00	0.00
700.0	0.00	0.00	700.0	0.0	0.0	0.0	0.00	0.00	0.00
800.0	0.00	0.00	800.0	0.0	0.0	0.0	0.00	0.00	0.00
KOP #1									
900.0	2.00	75.13	900.0	0.4	1.7	-1.7	2.00	2.00	0.00
1,000.0	4.00	75.13	999.8	1.8	6.7	-6.6	2.00	2.00	0.00
1,100.0	6.00	75.13	1,099.5	4.0	15.2	-14.9	2.00	2.00	0.00
1,200.0	8.00	75.13	1,198.7	7.2	26.9	-26.5	2.00	2.00	0.00
1,250.1	9.00	75.13	1,248.3	9.1	34.1	-33.6	2.00	2.00	0.00
1,300.0	9.00	75.13	1,297.5	11.1	41.7	-41.0	0.00	0.00	0.00
1,400.0	9.00	75.13	1,396.3	15.1	56.8	-55.9	0.00	0.00	0.00
1,500.0	9.00	75.13	1,495.1	19.1	71.9	-70.7	0.00	0.00	0.00
1,600.0	9.00	75.13	1,593.8	23.1	87.0	-85.6	0.00	0.00	0.00
1,700.0	9.00	75.13	1,692.6	27.1	102.1	-100.5	0.00	0.00	0.00
1,800.0	9.00	75.13	1,791.4	31.1	117.3	-115.4	0.00	0.00	0.00
1,900.0	9.00	75.13	1,890.1	35.2	132.4	-130.3	0.00	0.00	0.00
2,000.0	9.00	75.13	1,988.9	39.2	147.5	-145.1	0.00	0.00	0.00
2,100.0	9.00	75.13	2,087.7	43.2	162.6	-160.0	0.00	0.00	0.00
2,200.0	9.00	75.13	2,186.5	47.2	177.8	-174.9	0.00	0.00	0.00
2,300.0	9.00	75.13	2,285.2	51.2	192.9	-189.8	0.00	0.00	0.00
2,400.0	9.00	75.13	2,384.0	55.2	208.0	-204.6	0.00	0.00	0.00
2,500.0	9.00	75.13	2,482.8	59.3	223.1	-219.5	0.00	0.00	0.00
2,600.0	9.00	75.13	2,581.5	63.3	238.2	-234.4	0.00	0.00	0.00
2,700.0	9.00	75.13	2,680.3	67.3	253.4	-249.3	0.00	0.00	0.00
2,800.0	9.00	75.13	2,779.1	71.3	268.5	-264.2	0.00	0.00	0.00
2,900.0	9.00	75.13	2,877.8	75.3	283.6	-279.0	0.00	0.00	0.00
3,000.0	9.00	75.13	2,976.6	79.3	298.7	-293.9	0.00	0.00	0.00
3,100.0	9.00	75.13	3,075.4	83.4	313.9	-308.8	0.00	0.00	0.00
3,200.0	9.00	75.13	3,174.1	87.4	329.0	-323.7	0.00	0.00	0.00
3,300.0	9.00	75.13	3,272.9	91.4	344.1	-338.6	0.00	0.00	0.00
3,400.0	9.00	75.13	3,371.7	95.4	359.2	-353.4	0.00	0.00	0.00
3,500.0	9.00	75.13	3,470.4	99.4	374.4	-368.3	0.00	0.00	0.00
3,600.0	9.00	75.13	3,569.2	103.4	389.5	-383.2	0.00	0.00	0.00
3,700.0	9.00	75.13	3,668.0	107.4	404.6	-398.1	0.00	0.00	0.00
3,800.0	9.00	75.13	3,766.7	111.5	419.7	-412.9	0.00	0.00	0.00
3,900.0	9.00	75.13	3,865.5	115.5	434.8	-427.8	0.00	0.00	0.00
4,000.0	9.00	75.13	3,964.3	119.5	450.0	-442.7	0.00	0.00	0.00
4,100.0	9.00	75.13	4,063.0	123.5	465.1	-457.6	0.00	0.00	0.00
4,200.0	9.00	75.13	4,161.8	127.5	480.2	-472.5	0.00	0.00	0.00
4,300.0	9.00	75.13	4,260.6	131.5	495.3	-487.3	0.00	0.00	0.00
4,400.0	9.00	75.13	4,359.4	135.6	510.5	-502.2	0.00	0.00	0.00
4,500.0	9.00	75.13	4,458.1	139.6	525.6	-517.1	0.00	0.00	0.00
4,600.0	9.00	75.13	4,556.9	143.6	540.7	-532.0	0.00	0.00	0.00

Database:	landmark	Local Co-ordinate Reference:	Well SRC Eberle P-32NHZ
Company:	Synergy Resources	TVD Reference:	WELL @ 5045.0ft (Ensign Rig #134 - RKB - 13')
Project:	SEC.32-T1N-R66W	MD Reference:	WELL @ 5045.0ft (Ensign Rig #134 - RKB - 13')
Site:	SRC Eberle 14-32-31CHZM Pad Sec.32-T1N-R66W	North Reference:	True
Well:	SRC Eberle P-32NHZ	Survey Calculation Method:	Minimum Curvature
Wellbore:	Wellbore #1		
Design:	Plan #2 (3-14-14)		

Planned Survey									
Measured Depth (ft)	Inclination (°)	Azimuth (°)	Vertical Depth (ft)	+N/-S (ft)	+E/-W (ft)	Vertical Section (ft)	Dogleg Rate (°/100ft)	Build Rate (°/100ft)	Turn Rate (°/100ft)
4,700.0	9.00	75.13	4,655.7	147.6	555.8	-546.9	0.00	0.00	0.00
4,800.0	9.00	75.13	4,754.4	151.6	570.9	-561.7	0.00	0.00	0.00
4,900.0	9.00	75.13	4,853.2	155.6	586.1	-576.6	0.00	0.00	0.00
5,000.0	9.00	75.13	4,952.0	159.7	601.2	-591.5	0.00	0.00	0.00
5,100.0	9.00	75.13	5,050.7	163.7	616.3	-606.4	0.00	0.00	0.00
5,200.0	9.00	75.13	5,149.5	167.7	631.4	-621.2	0.00	0.00	0.00
5,300.0	9.00	75.13	5,248.3	171.7	646.6	-636.1	0.00	0.00	0.00
5,400.0	9.00	75.13	5,347.0	175.7	661.7	-651.0	0.00	0.00	0.00
5,500.0	9.00	75.13	5,445.8	179.7	676.8	-665.9	0.00	0.00	0.00
5,600.0	9.00	75.13	5,544.6	183.8	691.9	-680.8	0.00	0.00	0.00
5,700.0	9.00	75.13	5,643.3	187.8	707.1	-695.6	0.00	0.00	0.00
5,800.0	9.00	75.13	5,742.1	191.8	722.2	-710.5	0.00	0.00	0.00
5,900.0	9.00	75.13	5,840.9	195.8	737.3	-725.4	0.00	0.00	0.00
6,000.0	9.00	75.13	5,939.6	199.8	752.4	-740.3	0.00	0.00	0.00
6,100.0	9.00	75.13	6,038.4	203.8	767.5	-755.2	0.00	0.00	0.00
6,200.0	9.00	75.13	6,137.2	207.9	782.7	-770.0	0.00	0.00	0.00
6,214.7	9.00	75.13	6,151.7	208.4	784.9	-772.2	0.00	0.00	0.00
6,300.0	7.30	75.13	6,236.1	211.5	796.6	-783.7	2.00	-2.00	0.00
6,400.0	5.30	75.13	6,335.5	214.4	807.2	-794.1	2.00	-2.00	0.00
6,500.0	3.30	75.13	6,435.2	216.3	814.4	-801.3	2.00	-2.00	0.00
6,600.0	1.30	75.13	6,535.2	217.3	818.3	-805.1	2.00	-2.00	0.00
6,664.8	0.00	0.00	6,600.0	217.5	819.0	-805.8	2.00	-2.00	0.00
6,700.0	0.00	0.00	6,635.2	217.5	819.0	-805.8	0.00	0.00	0.00
6,800.0	0.00	0.00	6,735.2	217.5	819.0	-805.8	0.00	0.00	0.00
6,830.6	0.00	0.00	6,765.8	217.5	819.0	-805.8	0.00	0.00	0.00
KOP #2									
6,900.0	5.55	270.00	6,835.0	217.5	815.6	-802.4	8.00	8.00	0.00
7,000.0	13.55	270.00	6,933.6	217.5	799.1	-785.9	8.00	8.00	0.00
7,100.0	21.55	270.00	7,028.8	217.5	768.9	-755.8	8.00	8.00	0.00
7,200.0	29.55	270.00	7,119.0	217.5	725.9	-712.8	8.00	8.00	0.00
7,300.0	37.55	270.00	7,202.3	217.5	670.6	-657.6	8.00	8.00	0.00
7,400.0	45.55	270.00	7,277.0	217.5	604.4	-591.5	8.00	8.00	0.00
7,500.0	53.55	270.00	7,341.9	217.5	528.3	-515.6	8.00	8.00	0.00
7,600.0	61.55	270.00	7,395.5	217.5	444.0	-431.4	8.00	8.00	0.00
7,700.0	69.55	270.00	7,436.9	217.5	353.1	-340.5	8.00	8.00	0.00
7,800.0	77.55	270.00	7,465.2	217.5	257.2	-244.9	8.00	8.00	0.00
7,900.0	85.55	270.00	7,479.8	217.5	158.4	-146.2	8.00	8.00	0.00
7,955.7	90.00	270.00	7,482.0	217.5	102.8	-90.6	7.99	7.99	0.00
End of Build - 7"									
8,000.0	90.00	270.00	7,482.0	217.5	58.5	-46.4	0.00	0.00	0.00
8,100.0	90.00	270.00	7,482.0	217.5	-41.5	53.5	0.00	0.00	0.00
8,200.0	90.00	270.00	7,482.0	217.5	-141.5	153.3	0.00	0.00	0.00
8,300.0	90.00	270.00	7,482.0	217.5	-241.5	253.2	0.00	0.00	0.00
8,400.0	90.00	270.00	7,482.0	217.5	-341.5	353.0	0.00	0.00	0.00
8,500.0	90.00	270.00	7,482.0	217.5	-441.5	452.9	0.00	0.00	0.00
8,600.0	90.00	270.00	7,482.0	217.5	-541.5	552.7	0.00	0.00	0.00
8,700.0	90.00	270.00	7,482.0	217.5	-641.5	652.5	0.00	0.00	0.00
8,800.0	90.00	270.00	7,482.0	217.5	-741.5	752.4	0.00	0.00	0.00
8,900.0	90.00	270.00	7,482.0	217.5	-841.5	852.2	0.00	0.00	0.00
9,000.0	90.00	270.00	7,482.0	217.5	-941.5	952.1	0.00	0.00	0.00
9,100.0	90.00	270.00	7,482.0	217.5	-1,041.5	1,051.9	0.00	0.00	0.00

Database:	landmark	Local Co-ordinate Reference:	Well SRC Eberle P-32NHZ
Company:	Synergy Resources	TVD Reference:	WELL @ 5045.0ft (Ensign Rig #134 - RKB - 13')
Project:	SEC.32-T1N-R66W	MD Reference:	WELL @ 5045.0ft (Ensign Rig #134 - RKB - 13')
Site:	SRC Eberle 14-32-31CHZM Pad Sec.32-T1N-R66W	North Reference:	True
Well:	SRC Eberle P-32NHZ	Survey Calculation Method:	Minimum Curvature
Wellbore:	Wellbore #1		
Design:	Plan #2 (3-14-14)		

Planned Survey

Measured Depth (ft)	Inclination (°)	Azimuth (°)	Vertical Depth (ft)	+N/-S (ft)	+E/-W (ft)	Vertical Section (ft)	Dogleg Rate (°/100ft)	Build Rate (°/100ft)	Turn Rate (°/100ft)
9,200.0	90.00	270.00	7,482.0	217.5	-1,141.5	1,151.8	0.00	0.00	0.00
9,300.0	90.00	270.00	7,482.0	217.5	-1,241.5	1,251.6	0.00	0.00	0.00
9,400.0	90.00	270.00	7,482.0	217.5	-1,341.5	1,351.5	0.00	0.00	0.00
9,500.0	90.00	270.00	7,482.0	217.5	-1,441.5	1,451.3	0.00	0.00	0.00
9,600.0	90.00	270.00	7,482.0	217.5	-1,541.5	1,551.2	0.00	0.00	0.00
9,700.0	90.00	270.00	7,482.0	217.5	-1,641.5	1,651.0	0.00	0.00	0.00
9,800.0	90.00	270.00	7,482.0	217.5	-1,741.5	1,750.9	0.00	0.00	0.00
9,900.0	90.00	270.00	7,482.0	217.5	-1,841.5	1,850.7	0.00	0.00	0.00
10,000.0	90.00	270.00	7,482.0	217.5	-1,941.5	1,950.6	0.00	0.00	0.00
10,100.0	90.00	270.00	7,482.0	217.5	-2,041.5	2,050.4	0.00	0.00	0.00
10,200.0	90.00	270.00	7,482.0	217.5	-2,141.5	2,150.3	0.00	0.00	0.00
10,300.0	90.00	270.00	7,482.0	217.5	-2,241.5	2,250.1	0.00	0.00	0.00
10,400.0	90.00	270.00	7,482.0	217.5	-2,341.5	2,350.0	0.00	0.00	0.00
10,500.0	90.00	270.00	7,482.0	217.5	-2,441.5	2,449.8	0.00	0.00	0.00
10,600.0	90.00	270.00	7,482.0	217.5	-2,541.5	2,549.7	0.00	0.00	0.00
10,700.0	90.00	270.00	7,482.0	217.5	-2,641.5	2,649.5	0.00	0.00	0.00
10,800.0	90.00	270.00	7,482.0	217.5	-2,741.5	2,749.4	0.00	0.00	0.00
10,900.0	90.00	270.00	7,482.0	217.5	-2,841.5	2,849.2	0.00	0.00	0.00
11,000.0	90.00	270.00	7,482.0	217.5	-2,941.5	2,949.1	0.00	0.00	0.00
11,100.0	90.00	270.00	7,482.0	217.5	-3,041.5	3,048.9	0.00	0.00	0.00
11,200.0	90.00	270.00	7,482.0	217.5	-3,141.5	3,148.8	0.00	0.00	0.00
11,300.0	90.00	270.00	7,482.0	217.5	-3,241.5	3,248.6	0.00	0.00	0.00
11,400.0	90.00	270.00	7,482.0	217.5	-3,341.5	3,348.5	0.00	0.00	0.00
11,500.0	90.00	270.00	7,482.0	217.5	-3,441.5	3,448.3	0.00	0.00	0.00
11,600.0	90.00	270.00	7,482.0	217.5	-3,541.5	3,548.1	0.00	0.00	0.00
11,700.0	90.00	270.00	7,482.0	217.5	-3,641.5	3,648.0	0.00	0.00	0.00
11,800.0	90.00	270.00	7,482.0	217.5	-3,741.5	3,747.8	0.00	0.00	0.00
11,900.0	90.00	270.00	7,482.0	217.5	-3,841.5	3,847.7	0.00	0.00	0.00
12,000.0	90.00	270.00	7,482.0	217.5	-3,941.5	3,947.5	0.00	0.00	0.00
12,002.3	90.00	270.00	7,482.0	217.5	-3,943.9	3,949.9	0.00	0.00	0.00

BHL 1575'FSL & 475'FWL

Casing Points

Measured Depth (ft)	Vertical Depth (ft)	Name	Casing Diameter (")	Hole Diameter (")
7,955.7	7,482.0	7"	7	7-1/2

Plan Annotations

Measured Depth (ft)	Vertical Depth (ft)	Local Coordinates		Comment
		+N/-S (ft)	+E/-W (ft)	
800.0	800.0	0.0	0.0	KOP #1
6,830.6	6,765.8	217.5	819.0	KOP #2
7,955.7	7,482.0	217.5	102.8	End of Build



Synergy Resources

SEC.32-T1N-R66W

SRC Eberle 14-32-31CHZM Pad Sec.32-T1N-R66W

SRC Eberle P-32NHZ

Wellbore #1

Plan #2 (3-14-14)

Anticollision Report

17 March, 2014

Company:	Synergy Resources	Local Co-ordinate Reference:	Well SRC Eberle P-32NHZ
Project:	SEC.32-T1N-R66W	TVD Reference:	WELL @ 5045.0ft (Ensign Rig #134 - RKB - 13')
Reference Site:	SRC Eberle 14-32-31CHZM Pad Sec.32-T1N-R66W	MD Reference:	WELL @ 5045.0ft (Ensign Rig #134 - RKB - 13')
Site Error:	0.0ft	North Reference:	True
Reference Well:	SRC Eberle P-32NHZ	Survey Calculation Method:	Minimum Curvature
Well Error:	0.0ft	Output errors are at	2.00 sigma
Reference Wellbore	Wellbore #1	Database:	landmark
Reference Design:	Plan #2 (3-14-14)	Offset TVD Reference:	Offset Datum

Reference	Plan #2 (3-14-14)		
Filter type:	NO GLOBAL FILTER: Using user defined selection & filtering criteria		
Interpolation Method:	MD Interval 100.0ft	Error Model:	ISCWSA
Depth Range:	Unlimited	Scan Method:	Closest Approach 3D
Results Limited by:	Maximum center-center distance of 1,000.0ft	Error Surface:	Elliptical Conic
Warning Levels Evaluated at:	2.00 Sigma		

Survey Tool Program	Date 3/17/2014			
From (ft)	To (ft)	Survey (Wellbore)	Tool Name	Description
0.0	12,002.3	Plan #2 (3-14-14) (Wellbore #1)	MWD	MWD - Standard

Summary						
Site Name	Reference Measured Depth (ft)	Offset Measured Depth (ft)	Distance Between Centres (ft)	Between Ellipses (ft)	Separation Factor	Warning
Offset Well - Wellbore - Design						
SRC Eberle 14-32-31CHZM Pad Sec.32-T1N-R66W						
SRC Eberle 14-32-31CHZM - Wellbore #1 - Plan #3 (3-1	166.0	168.0	45.4	44.9	86.301	CC
SRC Eberle 14-32-31CHZM - Wellbore #1 - Plan #3 (3-1	200.0	202.0	45.4	44.7	66.904	ES
SRC Eberle 14-32-31CHZM - Wellbore #1 - Plan #3 (3-1	1,200.0	1,187.7	104.6	99.5	20.434	SF
SRC Eberle 14-32-31NHZM - Wellbore #1 - Plan #3 (3-1	366.3	367.3	20.7	19.3	14.556	CC
SRC Eberle 14-32-31NHZM - Wellbore #1 - Plan #3 (3-1	400.0	401.0	20.7	19.2	13.159	ES
SRC Eberle 14-32-31NHZM - Wellbore #1 - Plan #3 (3-1	12,002.3	12,031.7	882.8	631.2	3.509	SF
SRC Eberle B-32CHZ - Wellbore #1 - Plan #2 (3-14-14)	800.0	798.0	45.4	42.0	13.479	CC, ES
SRC Eberle B-32CHZ - Wellbore #1 - Plan #2 (3-14-14)	12,002.3	12,189.8	679.7	434.7	2.774	SF
SRC Eberle B-32NHZ - Wellbore #1 - Plan #2 (3-14-14)	800.0	797.0	68.1	64.7	20.232	CC, ES
SRC Eberle B-32NHZ - Wellbore #1 - Plan #2 (3-14-14)	12,002.3	12,027.0	440.1	188.4	1.748	SF
SRC Eberle P-32CHZ - Wellbore #1 - Plan #2 (3-14-14)	800.0	799.0	22.7	19.3	6.735	CC, ES
SRC Eberle P-32CHZ - Wellbore #1 - Plan #2 (3-14-14)	12,002.3	12,162.6	272.6	64.8	1.312	Level 3, SF

Offset Design SRC Eberle 14-32-31CHZM Pad Sec.32-T1N-R66W - SRC Eberle 14-32-31CHZM - Wellbore #1 - Plan												
Survey Program: 0-MWD												
Reference Offset Semi Major Axis Distance												
Measured Depth (ft)	Vertical Depth (ft)	Measured Depth (ft)	Vertical Depth (ft)	Reference (ft)	Offset (ft)	Highside Toolface (°)	Offset Wellbore Centre +N/-S (ft)	+E/-W (ft)	Between Centres (ft)	Between Ellipses (ft)	Minimum Separation (ft)	Separation Factor
0.0	0.0	2.0	2.0	0.0	0.0	90.42	-0.3	45.4	45.4	45.4	0.00	N/A
100.0	100.0	102.0	102.0	0.1	0.1	90.42	-0.3	45.4	45.4	45.2	0.23	197.962
166.0	166.0	168.0	168.0	0.3	0.3	90.42	-0.3	45.4	45.4	44.9	0.53	86.301 CC
200.0	200.0	202.0	202.0	0.3	0.3	90.42	-0.3	45.4	45.4	44.7	0.68	66.904 ES
300.0	300.0	301.5	301.5	0.6	0.5	91.26	-1.0	46.0	46.0	44.9	1.11	41.571
400.0	400.0	400.9	400.8	0.8	0.7	93.58	-3.0	47.7	47.8	46.3	1.53	31.177
500.0	500.0	500.0	499.9	1.0	1.0	97.05	-6.2	50.5	51.0	49.0	1.98	25.800
600.0	600.0	599.3	598.9	1.2	1.2	101.21	-10.8	54.5	55.7	53.2	2.43	22.887
700.0	700.0	698.1	697.5	1.5	1.4	105.59	-16.6	59.6	62.1	59.2	2.90	21.367
800.0	800.0	796.7	795.6	1.7	1.7	109.82	-23.7	65.8	70.2	66.8	3.39	20.695
900.0	900.0	895.0	893.3	1.9	2.0	39.22	-32.0	73.1	78.9	75.1	3.78	20.865
1,000.0	999.8	993.0	990.4	2.1	2.3	44.73	-41.6	81.4	87.1	82.9	4.22	20.658
1,100.0	1,099.5	1,090.6	1,087.0	2.3	2.6	51.01	-52.4	90.8	95.5	90.8	4.66	20.493
1,200.0	1,198.7	1,187.7	1,182.8	2.6	3.0	57.83	-64.3	101.2	104.6	99.5	5.12	20.434 SF

CC - Min centre to center distance or convergent point, SF - min separation factor, ES - min ellipse separation

Company:	Synergy Resources	Local Co-ordinate Reference:	Well SRC Eberle P-32NHZ
Project:	SEC.32-T1N-R66W	TVD Reference:	WELL @ 5045.0ft (Ensign Rig #134 - RKB - 13')
Reference Site:	SRC Eberle 14-32-31CHZM Pad Sec.32-T1N-R66W	MD Reference:	WELL @ 5045.0ft (Ensign Rig #134 - RKB - 13')
Site Error:	0.0ft	North Reference:	True
Reference Well:	SRC Eberle P-32NHZ	Survey Calculation Method:	Minimum Curvature
Well Error:	0.0ft	Output errors are at	2.00 sigma
Reference Wellbore	Wellbore #1	Database:	landmark
Reference Design:	Plan #2 (3-14-14)	Offset TVD Reference:	Offset Datum

Offset Design													Offset Site Error:	0.0ft
Survey Program: 0-MWD													Offset Well Error:	0.0ft
Reference		Offset		Semi Major Axis			Distance							Warning
Measured Depth (ft)	Vertical Depth (ft)	Measured Depth (ft)	Vertical Depth (ft)	Reference (ft)	Offset (ft)	Highside Toolface (°)	Offset Wellbore Centre +N/-S (ft)	+E/-W (ft)	Between Centres (ft)	Between Ellipses (ft)	Minimum Separation (ft)	Separation Factor		
1,300.0	1,297.5	1,284.3	1,277.8	2.9	3.3	64.81	-77.4	112.7	115.5	109.9	5.63	20.522		
1,400.0	1,396.3	1,380.9	1,372.6	3.2	3.7	70.72	-91.6	125.1	129.3	123.1	6.18	20.918		
1,500.0	1,495.1	1,479.1	1,468.7	3.5	4.2	75.49	-106.5	138.1	144.8	138.0	6.77	21.376		
1,600.0	1,593.8	1,577.2	1,564.9	3.8	4.6	79.34	-121.4	151.1	161.0	153.6	7.39	21.791		
1,700.0	1,692.6	1,675.4	1,661.0	4.1	5.0	82.47	-136.2	164.1	177.9	169.8	8.03	22.155		
1,800.0	1,791.4	1,773.5	1,757.2	4.5	5.4	85.06	-151.1	177.0	195.1	186.5	8.68	22.473		
1,900.0	1,890.1	1,871.6	1,853.3	4.8	5.9	87.23	-165.9	190.0	212.7	203.4	9.35	22.751		
2,000.0	1,988.9	1,969.8	1,949.4	5.2	6.3	89.07	-180.8	203.0	230.6	220.6	10.03	22.996		
2,100.0	2,087.7	2,067.9	2,045.6	5.5	6.7	90.64	-195.6	216.0	248.6	237.9	10.71	23.212		
2,200.0	2,186.5	2,166.1	2,141.7	5.9	7.2	92.00	-210.5	228.9	266.8	255.4	11.40	23.404		
2,300.0	2,285.2	2,264.2	2,237.9	6.2	7.6	93.19	-225.3	241.9	285.2	273.1	12.10	23.576		
2,400.0	2,384.0	2,362.4	2,334.0	6.6	8.0	94.23	-240.2	254.9	303.6	290.8	12.79	23.730		
2,500.0	2,482.8	2,460.5	2,430.2	6.9	8.5	95.15	-255.1	267.9	322.1	308.6	13.50	23.869		
2,600.0	2,581.5	2,558.7	2,526.3	7.3	8.9	95.97	-269.9	280.8	340.7	326.5	14.20	23.995		
2,700.0	2,680.3	2,656.8	2,622.4	7.7	9.4	96.71	-284.8	293.8	359.4	344.5	14.91	24.110		
2,800.0	2,779.1	2,754.9	2,718.6	8.0	9.8	97.38	-299.6	306.8	378.1	362.5	15.61	24.215		
2,900.0	2,877.8	2,853.1	2,814.7	8.4	10.2	97.98	-314.5	319.8	396.8	380.5	16.32	24.312		
3,000.0	2,976.6	2,951.2	2,910.9	8.8	10.7	98.53	-329.3	332.7	415.6	398.6	17.03	24.400		
3,100.0	3,075.4	3,049.4	3,007.0	9.1	11.1	99.03	-344.2	345.7	434.5	416.7	17.75	24.483		
3,200.0	3,174.1	3,147.5	3,103.1	9.5	11.6	99.49	-359.0	358.7	453.3	434.9	18.46	24.559		
3,300.0	3,272.9	3,245.7	3,199.3	9.8	12.0	99.91	-373.9	371.7	472.2	453.0	19.17	24.629		
3,400.0	3,371.7	3,343.8	3,295.4	10.2	12.4	100.30	-388.8	384.6	491.1	471.2	19.89	24.695		
3,500.0	3,470.4	3,442.0	3,391.6	10.6	12.9	100.66	-403.6	397.6	510.0	489.4	20.60	24.757		
3,600.0	3,569.2	3,540.1	3,487.7	10.9	13.3	101.00	-418.5	410.6	529.0	507.6	21.32	24.814		
3,700.0	3,668.0	3,638.2	3,583.9	11.3	13.8	101.31	-433.3	423.6	547.9	525.9	22.03	24.868		
3,800.0	3,766.7	3,736.4	3,680.0	11.7	14.2	101.60	-448.2	436.6	566.9	544.1	22.75	24.919		
3,900.0	3,865.5	3,834.5	3,776.1	12.0	14.7	101.87	-463.0	449.5	585.9	562.4	23.47	24.966		
4,000.0	3,964.3	3,932.7	3,872.3	12.4	15.1	102.13	-477.9	462.5	604.9	580.7	24.18	25.011		
4,100.0	4,063.0	4,030.8	3,968.4	12.8	15.5	102.37	-492.7	475.5	623.9	599.0	24.90	25.054		
4,200.0	4,161.8	4,129.0	4,064.6	13.1	16.0	102.59	-507.6	488.5	642.9	617.3	25.62	25.094		
4,300.0	4,260.6	4,227.1	4,160.7	13.5	16.4	102.81	-522.5	501.4	661.9	635.6	26.34	25.132		
4,400.0	4,359.4	4,325.3	4,256.8	13.9	16.9	103.01	-537.3	514.4	681.0	653.9	27.06	25.168		
4,500.0	4,458.1	4,423.4	4,353.0	14.2	17.3	103.20	-552.2	527.4	700.0	672.2	27.77	25.202		
4,600.0	4,556.9	4,521.5	4,449.1	14.6	17.8	103.38	-567.0	540.4	719.0	690.5	28.49	25.235		
4,700.0	4,655.7	4,619.7	4,545.3	15.0	18.2	103.55	-581.9	553.3	738.1	708.9	29.21	25.266		
4,800.0	4,754.4	4,717.8	4,641.4	15.4	18.6	103.71	-596.7	566.3	757.2	727.2	29.93	25.296		
4,900.0	4,853.2	4,816.0	4,737.6	15.7	19.1	103.86	-611.6	579.3	776.2	745.6	30.65	25.324		
5,000.0	4,952.0	4,914.1	4,833.7	16.1	19.5	104.01	-626.4	592.3	795.3	763.9	31.37	25.351		
5,100.0	5,050.7	5,012.3	4,929.8	16.5	20.0	104.15	-641.3	605.2	814.4	782.3	32.09	25.376		
5,200.0	5,149.5	5,110.4	5,026.0	16.8	20.4	104.28	-656.2	618.2	833.5	800.6	32.81	25.401		
5,300.0	5,248.3	5,208.6	5,122.1	17.2	20.9	104.41	-671.0	631.2	852.5	819.0	33.53	25.425		
5,400.0	5,347.0	5,306.7	5,218.3	17.6	21.3	104.53	-685.9	644.2	871.6	837.4	34.25	25.447		
5,500.0	5,445.8	5,404.8	5,314.4	17.9	21.7	104.65	-700.7	657.1	890.7	855.8	34.97	25.469		
5,600.0	5,544.6	5,503.0	5,410.6	18.3	22.2	104.76	-715.6	670.1	909.8	874.1	35.69	25.490		
5,700.0	5,643.3	5,601.1	5,506.7	18.7	22.6	104.87	-730.4	683.1	928.9	892.5	36.41	25.510		
5,800.0	5,742.1	5,699.3	5,602.8	19.0	23.1	104.97	-745.3	696.1	948.0	910.9	37.14	25.529		
5,900.0	5,840.9	5,797.4	5,699.0	19.4	23.5	105.07	-760.1	709.0	967.1	929.3	37.86	25.547		
6,000.0	5,939.6	5,895.6	5,795.1	19.8	24.0	105.16	-775.0	722.0	986.2	947.7	38.58	25.565		

Company:	Synergy Resources	Local Co-ordinate Reference:	Well SRC Eberle P-32NHZ
Project:	SEC.32-T1N-R66W	TVD Reference:	WELL @ 5045.0ft (Ensign Rig #134 - RKB - 13')
Reference Site:	SRC Eberle 14-32-31CHZM Pad Sec.32-T1N-R66W	MD Reference:	WELL @ 5045.0ft (Ensign Rig #134 - RKB - 13')
Site Error:	0.0ft	North Reference:	True
Reference Well:	SRC Eberle P-32NHZ	Survey Calculation Method:	Minimum Curvature
Well Error:	0.0ft	Output errors are at	2.00 sigma
Reference Wellbore	Wellbore #1	Database:	landmark
Reference Design:	Plan #2 (3-14-14)	Offset TVD Reference:	Offset Datum

Offset Design													Offset Site Error:	0.0ft
Survey Program: 0-MWD													Offset Well Error:	0.0ft
Reference		Offset		Semi Major Axis			Distance							Warning
Measured Depth (ft)	Vertical Depth (ft)	Measured Depth (ft)	Vertical Depth (ft)	Reference (ft)	Offset (ft)	Highside Toolface (°)	Offset Wellbore Centre +N/-S (ft)	+E/-W (ft)	Between Centres (ft)	Between Ellipses (ft)	Minimum Separation (ft)	Separation Factor		
0.0	0.0	1.0	1.0	0.0	0.0	90.00	0.0	20.7	20.7	20.7	0.00	N/A		
100.0	100.0	101.0	101.0	0.1	0.1	90.00	0.0	20.7	20.7	20.5	0.23	91.320		
200.0	200.0	201.0	201.0	0.3	0.3	90.00	0.0	20.7	20.7	20.1	0.68	30.642		
300.0	300.0	301.0	301.0	0.6	0.6	90.00	0.0	20.7	20.7	19.6	1.13	18.410		
366.3	366.3	367.3	367.3	0.7	0.7	90.00	0.0	20.7	20.7	19.3	1.42	14.556 CC		
400.0	400.0	401.0	401.0	0.8	0.8	90.00	0.0	20.7	20.7	19.2	1.58	13.159 ES		
500.0	500.0	500.7	500.7	1.0	1.0	91.52	-0.6	21.4	21.4	19.4	2.00	10.694		
600.0	600.0	600.4	600.3	1.2	1.2	95.47	-2.2	23.4	23.5	21.1	2.42	9.718		
700.0	700.0	700.0	699.9	1.5	1.4	100.64	-5.0	26.8	27.3	24.4	2.86	9.545		
800.0	800.0	799.2	798.9	1.7	1.6	105.83	-8.9	31.4	32.7	29.4	3.30	9.908		
900.0	900.0	898.4	897.8	1.9	1.9	36.66	-13.9	37.4	38.6	34.9	3.72	10.383		
1,000.0	999.8	997.4	996.3	2.1	2.1	44.48	-19.9	44.6	43.9	39.8	4.14	10.606		
1,100.0	1,099.5	1,096.2	1,094.5	2.3	2.4	53.70	-27.0	53.2	49.5	44.9	4.58	10.805		
1,200.0	1,198.7	1,194.6	1,192.1	2.6	2.7	63.73	-35.2	63.0	56.2	51.1	5.05	11.115		
1,300.0	1,297.5	1,292.7	1,289.0	2.9	3.0	73.52	-44.4	74.0	65.0	59.4	5.59	11.619		
1,400.0	1,396.3	1,390.5	1,385.5	3.2	3.3	80.64	-54.7	86.3	76.7	70.5	6.18	12.415		
1,500.0	1,495.1	1,488.0	1,481.5	3.5	3.7	85.27	-66.0	99.8	90.7	83.9	6.79	13.358		
1,600.0	1,593.8	1,586.6	1,578.3	3.8	4.1	88.40	-77.9	114.2	105.9	98.5	7.43	14.261		
1,700.0	1,692.6	1,685.3	1,675.2	4.1	4.5	90.74	-89.9	128.6	121.4	113.3	8.08	15.021		
1,800.0	1,791.4	1,784.0	1,772.1	4.5	4.9	92.55	-101.9	143.0	137.0	128.3	8.75	15.663		
1,900.0	1,890.1	1,882.7	1,869.0	4.8	5.3	93.99	-113.9	157.3	152.7	143.3	9.42	16.208		
2,000.0	1,988.9	1,981.4	1,965.9	5.2	5.7	95.16	-125.9	171.7	168.5	158.4	10.11	16.674		
2,100.0	2,087.7	2,080.1	2,062.8	5.5	6.1	96.13	-137.9	186.1	184.4	173.6	10.80	17.077		
2,200.0	2,186.5	2,178.8	2,159.7	5.9	6.5	96.95	-149.9	200.5	200.3	188.8	11.49	17.428		
2,300.0	2,285.2	2,277.5	2,256.6	6.2	6.9	97.64	-161.8	214.9	216.2	204.0	12.19	17.735		
2,400.0	2,384.0	2,376.1	2,353.5	6.6	7.3	98.24	-173.8	229.2	232.2	219.3	12.90	18.006		
2,500.0	2,482.8	2,474.8	2,450.4	6.9	7.7	98.77	-185.8	243.6	248.2	234.6	13.60	18.246		
2,600.0	2,581.5	2,573.5	2,547.3	7.3	8.2	99.23	-197.8	258.0	264.2	249.9	14.31	18.461		
2,700.0	2,680.3	2,672.2	2,644.2	7.7	8.6	99.63	-209.8	272.4	280.2	265.2	15.02	18.654		
2,800.0	2,779.1	2,770.9	2,741.1	8.0	9.0	100.00	-221.8	286.8	296.2	280.5	15.73	18.828		
2,900.0	2,877.8	2,869.6	2,838.0	8.4	9.4	100.32	-233.8	301.1	312.3	295.8	16.45	18.986		
3,000.0	2,976.6	2,968.3	2,934.9	8.8	9.8	100.62	-245.8	315.5	328.3	311.2	17.16	19.130		
3,100.0	3,075.4	3,067.0	3,031.8	9.1	10.3	100.88	-257.8	329.9	344.4	326.5	17.88	19.261		
3,200.0	3,174.1	3,165.7	3,128.7	9.5	10.7	101.13	-269.7	344.3	360.4	341.8	18.60	19.381		
3,300.0	3,272.9	3,264.4	3,225.6	9.8	11.1	101.35	-281.7	358.7	376.5	357.2	19.32	19.492		
3,400.0	3,371.7	3,363.1	3,322.5	10.2	11.5	101.55	-293.7	373.0	392.6	372.6	20.04	19.594		
3,500.0	3,470.4	3,461.7	3,419.4	10.6	12.0	101.74	-305.7	387.4	408.7	387.9	20.76	19.688		
3,600.0	3,569.2	3,560.4	3,516.3	10.9	12.4	101.92	-317.7	401.8	424.7	403.3	21.48	19.776		
3,700.0	3,668.0	3,659.1	3,613.2	11.3	12.8	102.08	-329.7	416.2	440.8	418.6	22.20	19.858		
3,800.0	3,766.7	3,757.8	3,710.1	11.7	13.2	102.23	-341.7	430.6	456.9	434.0	22.92	19.934		
3,900.0	3,865.5	3,856.5	3,807.0	12.0	13.7	102.37	-353.7	444.9	473.0	449.4	23.64	20.005		
4,000.0	3,964.3	3,955.2	3,903.9	12.4	14.1	102.50	-365.7	459.3	489.1	464.7	24.37	20.072		
4,100.0	4,063.0	4,053.9	4,000.8	12.8	14.5	102.62	-377.6	473.7	505.2	480.1	25.09	20.134		
4,200.0	4,161.8	4,152.6	4,097.7	13.1	14.9	102.73	-389.6	488.1	521.3	495.5	25.82	20.193		
4,300.0	4,260.6	4,251.3	4,194.6	13.5	15.4	102.84	-401.6	502.5	537.4	510.9	26.54	20.248		
4,400.0	4,359.4	4,350.0	4,291.5	13.9	15.8	102.94	-413.6	516.8	553.5	526.2	27.27	20.301		
4,500.0	4,458.1	4,448.6	4,388.4	14.2	16.2	103.04	-425.6	531.2	569.6	541.6	27.99	20.350		
4,600.0	4,556.9	4,547.3	4,485.3	14.6	16.6	103.13	-437.6	545.6	585.7	557.0	28.72	20.397		
4,700.0	4,655.7	4,646.0	4,582.2	15.0	17.1	103.21	-449.6	560.0	601.8	572.4	29.44	20.441		
4,800.0	4,754.4	4,744.7	4,679.1	15.4	17.5	103.29	-461.6	574.4	617.9	587.8	30.17	20.483		
4,900.0	4,853.2	4,843.4	4,776.0	15.7	17.9	103.37	-473.6	588.7	634.0	603.1	30.89	20.523		

CC - Min centre to center distance or convergent point, SF - min separation factor, ES - min ellipse separation

Company:	Synergy Resources	Local Co-ordinate Reference:	Well SRC Eberle P-32NHZ
Project:	SEC.32-T1N-R66W	TVD Reference:	WELL @ 5045.0ft (Ensign Rig #134 - RKB - 13')
Reference Site:	SRC Eberle 14-32-31CHZM Pad Sec.32-T1N-R66W	MD Reference:	WELL @ 5045.0ft (Ensign Rig #134 - RKB - 13')
Site Error:	0.0ft	North Reference:	True
Reference Well:	SRC Eberle P-32NHZ	Survey Calculation Method:	Minimum Curvature
Well Error:	0.0ft	Output errors are at	2.00 sigma
Reference Wellbore	Wellbore #1	Database:	landmark
Reference Design:	Plan #2 (3-14-14)	Offset TVD Reference:	Offset Datum

Offset Design		SRC Eberle 14-32-31CHZM Pad Sec.32-T1N-R66W - SRC Eberle 14-32-31NHZM - Wellbore #1 - Plan										Offset Site Error:		0.0 ft
Survey Program: 0-MWD												Offset Well Error:		0.0 ft
Reference		Offset		Semi Major Axis			Distance							Warning
Measured Depth (ft)	Vertical Depth (ft)	Measured Depth (ft)	Vertical Depth (ft)	Reference (ft)	Offset (ft)	Highside Toolface (°)	Offset Wellbore Centre +N/-S (ft)	+E/-W (ft)	Between Centres (ft)	Between Ellipses (ft)	Minimum Separation (ft)	Separation Factor		
5,000.0	4,952.0	4,942.1	4,872.9	16.1	18.3	103.44	-485.5	603.1	650.2	618.5	31.62	20.561		
5,100.0	5,050.7	5,040.8	4,969.7	16.5	18.8	103.51	-497.5	617.5	666.3	633.9	32.35	20.597		
5,200.0	5,149.5	5,139.5	5,066.6	16.8	19.2	103.58	-509.5	631.9	682.4	649.3	33.07	20.632		
5,300.0	5,248.3	5,238.2	5,163.5	17.2	19.6	103.64	-521.5	646.3	698.5	664.7	33.80	20.665		
5,400.0	5,347.0	5,336.9	5,260.4	17.6	20.0	103.70	-533.5	660.6	714.6	680.1	34.53	20.696		
5,500.0	5,445.8	5,435.5	5,357.3	17.9	20.5	103.76	-545.5	675.0	730.7	695.5	35.26	20.726		
5,600.0	5,544.6	5,534.2	5,454.2	18.3	20.9	103.82	-557.5	689.4	746.8	710.9	35.98	20.755		
5,700.0	5,643.3	5,632.9	5,551.1	18.7	21.3	103.87	-569.5	703.8	763.0	726.2	36.71	20.783		
5,800.0	5,742.1	5,731.6	5,648.0	19.0	21.7	103.92	-581.4	718.2	779.1	741.6	37.44	20.809		
5,900.0	5,840.9	5,830.3	5,744.9	19.4	22.2	103.97	-593.4	732.5	795.2	757.0	38.17	20.834		
6,000.0	5,939.6	5,929.0	5,841.8	19.8	22.6	104.02	-605.4	746.9	811.3	772.4	38.90	20.859		
6,100.0	6,038.4	6,027.7	5,938.7	20.2	23.0	104.06	-617.4	761.3	827.4	787.8	39.62	20.882		
6,200.0	6,137.2	6,126.4	6,035.6	20.5	23.5	104.10	-629.4	775.7	843.5	803.2	40.35	20.905		
6,300.0	6,236.1	6,243.5	6,150.9	20.8	23.9	104.38	-642.6	791.5	858.5	817.5	41.06	20.906		
6,400.0	6,335.5	6,366.7	6,272.9	21.1	24.2	104.62	-653.3	804.3	870.0	828.4	41.63	20.900		
6,500.0	6,435.2	6,490.6	6,396.3	21.3	24.4	104.79	-660.7	813.2	877.8	835.7	42.10	20.851		
6,600.0	6,535.2	6,614.9	6,520.5	21.4	24.6	104.87	-664.6	817.9	882.0	839.6	42.48	20.764		
6,700.0	6,635.2	6,730.6	6,636.2	21.6	24.8	-179.98	-665.3	818.7	882.8	846.5	36.26	24.347		
6,800.0	6,735.2	6,830.6	6,736.2	21.7	24.9	-179.98	-665.3	818.7	882.8	846.2	36.58	24.136		
6,900.0	6,835.0	6,930.6	6,836.0	21.8	24.9	-89.98	-665.3	815.3	882.8	839.6	43.25	20.413		
7,000.0	6,933.6	7,030.5	6,934.5	21.8	24.9	-89.97	-665.3	798.6	882.8	839.6	43.18	20.443		
7,100.0	7,028.8	7,130.4	7,029.6	21.6	24.8	-89.96	-665.3	768.4	882.8	839.9	42.91	20.574		
7,200.0	7,119.0	7,230.3	7,119.6	21.4	24.6	-89.95	-665.3	725.2	882.8	840.3	42.49	20.775		
7,300.0	7,202.3	7,330.2	7,202.8	21.2	24.4	-89.95	-665.3	670.0	882.8	840.8	42.04	21.000		
7,400.0	7,277.0	7,430.1	7,277.4	21.0	24.1	-89.94	-665.3	603.7	882.8	841.1	41.68	21.183		
7,500.0	7,341.9	7,530.0	7,342.1	20.9	23.9	-89.94	-665.3	527.8	882.8	841.2	41.56	21.241		
7,600.0	7,395.5	7,629.8	7,395.6	21.0	23.8	-89.93	-665.3	443.5	882.8	840.9	41.85	21.093		
7,700.0	7,436.9	7,729.7	7,436.9	21.3	23.7	-89.93	-665.3	352.7	882.8	840.1	42.68	20.686		
7,800.0	7,465.2	7,829.5	7,465.1	22.0	23.9	-89.93	-665.3	257.0	882.8	838.7	44.09	20.022		
7,900.0	7,479.8	7,929.4	7,479.8	23.0	24.2	-89.93	-665.3	158.3	882.8	836.7	46.08	19.159		
8,000.0	7,482.0	8,029.3	7,482.0	24.2	25.0	-89.94	-665.3	58.5	882.8	834.2	48.57	18.176		
8,100.0	7,482.0	8,129.3	7,482.0	25.6	26.2	-89.94	-665.3	-41.5	882.8	831.3	51.52	17.136		
8,200.0	7,482.0	8,229.3	7,482.0	27.3	27.7	-89.94	-665.3	-141.5	882.8	827.9	54.88	16.085		
8,300.0	7,482.0	8,329.3	7,482.0	29.2	29.5	-89.94	-665.3	-241.5	882.8	824.2	58.59	15.067		
8,400.0	7,482.0	8,429.3	7,482.0	31.2	31.4	-89.94	-665.3	-341.5	882.8	820.2	62.59	14.105		
8,500.0	7,482.0	8,529.3	7,482.0	33.3	33.5	-89.94	-665.3	-441.5	882.8	816.0	66.81	13.213		
8,600.0	7,482.0	8,629.3	7,482.0	35.5	35.7	-89.94	-665.3	-541.5	882.8	811.6	71.23	12.394		
8,700.0	7,482.0	8,729.3	7,482.0	37.8	38.0	-89.94	-665.3	-641.5	882.8	807.0	75.81	11.645		
8,800.0	7,482.0	8,829.3	7,482.0	40.1	40.4	-89.94	-665.3	-741.5	882.8	802.3	80.51	10.965		
8,900.0	7,482.0	8,929.3	7,482.0	42.6	42.8	-89.94	-665.3	-841.5	882.8	797.5	85.33	10.346		
9,000.0	7,482.0	9,029.3	7,482.0	45.0	45.3	-89.94	-665.3	-941.5	882.8	792.6	90.24	9.783		
9,100.0	7,482.0	9,129.3	7,482.0	47.5	47.8	-89.94	-665.3	-1,041.5	882.8	787.6	95.22	9.271		
9,200.0	7,482.0	9,229.3	7,482.0	50.0	50.3	-89.94	-665.3	-1,141.5	882.8	782.5	100.27	8.804		
9,300.0	7,482.0	9,329.3	7,482.0	52.6	52.9	-89.94	-665.3	-1,241.5	882.8	777.4	105.38	8.377		
9,400.0	7,482.0	9,429.3	7,482.0	55.2	55.5	-89.94	-665.3	-1,341.5	882.8	772.3	110.54	7.987		
9,500.0	7,482.0	9,529.3	7,482.0	57.8	58.1	-89.94	-665.3	-1,441.5	882.8	767.1	115.73	7.628		
9,600.0	7,482.0	9,629.3	7,482.0	60.4	60.7	-89.94	-665.3	-1,541.5	882.8	761.8	120.97	7.298		
9,700.0	7,482.0	9,729.3	7,482.0	63.0	63.3	-89.94	-665.3	-1,641.5	882.8	756.6	126.24	6.993		
9,800.0	7,482.0	9,829.3	7,482.0	65.7	66.0	-89.94	-665.3	-1,741.5	882.8	751.3	131.53	6.712		
9,900.0	7,482.0	9,929.3	7,482.0	68.3	68.6	-89.94	-665.3	-1,841.5	882.8	746.0	136.85	6.451		

CC - Min centre to center distance or convergent point, SF - min separation factor, ES - min ellipse separation

Company:	Synergy Resources	Local Co-ordinate Reference:	Well SRC Eberle P-32NHZ
Project:	SEC.32-T1N-R66W	TVD Reference:	WELL @ 5045.0ft (Ensign Rig #134 - RKB - 13')
Reference Site:	SRC Eberle 14-32-31CHZM Pad Sec.32-T1N-R66W	MD Reference:	WELL @ 5045.0ft (Ensign Rig #134 - RKB - 13')
Site Error:	0.0ft	North Reference:	True
Reference Well:	SRC Eberle P-32NHZ	Survey Calculation Method:	Minimum Curvature
Well Error:	0.0ft	Output errors are at	2.00 sigma
Reference Wellbore	Wellbore #1	Database:	landmark
Reference Design:	Plan #2 (3-14-14)	Offset TVD Reference:	Offset Datum

Offset Design													Offset Site Error:	0.0 ft
Survey Program: 0-MWD													Offset Well Error:	0.0 ft
Reference Offset Semi Major Axis Distance Warning														
Measured Depth (ft)	Vertical Depth (ft)	Measured Depth (ft)	Vertical Depth (ft)	Reference (ft)	Offset (ft)	Highside Toolface (°)	Offset Wellbore Centre +N/-S (ft)	+E/-W (ft)	Between Centres (ft)	Between Ellipses (ft)	Minimum Separation (ft)	Separation Factor		
10,000.0	7,482.0	10,029.3	7,482.0	71.0	71.3	-89.94	-665.3	-1,941.5	882.8	740.6	142.19	6.208		
10,100.0	7,482.0	10,129.3	7,482.0	73.7	74.0	-89.94	-665.3	-2,041.5	882.8	735.2	147.56	5.983		
10,200.0	7,482.0	10,229.3	7,482.0	76.4	76.7	-89.94	-665.3	-2,141.5	882.8	729.9	152.94	5.772		
10,300.0	7,482.0	10,329.3	7,482.0	79.1	79.4	-89.94	-665.3	-2,241.5	882.8	724.5	158.33	5.576		
10,400.0	7,482.0	10,429.3	7,482.0	81.8	82.1	-89.94	-665.3	-2,341.5	882.8	719.1	163.74	5.391		
10,500.0	7,482.0	10,529.3	7,482.0	84.5	84.8	-89.94	-665.3	-2,441.5	882.8	713.6	169.16	5.219		
10,600.0	7,482.0	10,629.3	7,482.0	87.2	87.5	-89.94	-665.3	-2,541.5	882.8	708.2	174.60	5.056		
10,700.0	7,482.0	10,729.3	7,482.0	89.9	90.2	-89.94	-665.3	-2,641.5	882.8	702.8	180.05	4.903		
10,800.0	7,482.0	10,829.3	7,482.0	92.7	92.9	-89.94	-665.3	-2,741.5	882.8	697.3	185.50	4.759		
10,900.0	7,482.0	10,929.3	7,482.0	95.4	95.7	-89.94	-665.3	-2,841.5	882.8	691.8	190.96	4.623		
11,000.0	7,482.0	11,029.3	7,482.0	98.1	98.4	-89.94	-665.3	-2,941.5	882.8	686.4	196.44	4.494		
11,100.0	7,482.0	11,129.3	7,482.0	100.9	101.2	-89.94	-665.3	-3,041.5	882.8	680.9	201.92	4.372		
11,200.0	7,482.0	11,229.3	7,482.0	103.6	103.9	-89.94	-665.3	-3,141.5	882.8	675.4	207.40	4.256		
11,300.0	7,482.0	11,329.3	7,482.0	106.4	106.6	-89.94	-665.3	-3,241.5	882.8	669.9	212.90	4.147		
11,400.0	7,482.0	11,429.3	7,482.0	109.1	109.4	-89.94	-665.3	-3,341.5	882.8	664.4	218.39	4.042		
11,500.0	7,482.0	11,529.3	7,482.0	111.9	112.1	-89.94	-665.3	-3,441.5	882.8	658.9	223.90	3.943		
11,600.0	7,482.0	11,629.3	7,482.0	114.6	114.9	-89.94	-665.3	-3,541.5	882.8	653.4	229.41	3.848		
11,700.0	7,482.0	11,729.3	7,482.0	117.4	117.6	-89.94	-665.3	-3,641.5	882.8	647.9	234.92	3.758		
11,800.0	7,482.0	11,829.3	7,482.0	120.1	120.4	-89.94	-665.3	-3,741.5	882.8	642.4	240.44	3.672		
11,900.0	7,482.0	11,929.3	7,482.0	122.9	123.2	-89.94	-665.3	-3,841.5	882.8	636.8	245.96	3.589		
12,000.0	7,482.0	12,029.3	7,482.0	125.6	125.9	-89.94	-665.3	-3,941.5	882.8	631.3	251.49	3.510		
12,002.3	7,482.0	12,031.7	7,482.0	125.7	126.0	-89.94	-665.3	-3,943.9	882.8	631.2	251.62	3.509 SF		

Company:	Synergy Resources	Local Co-ordinate Reference:	Well SRC Eberle P-32NHZ
Project:	SEC.32-T1N-R66W	TVD Reference:	WELL @ 5045.0ft (Ensign Rig #134 - RKB - 13')
Reference Site:	SRC Eberle 14-32-31CHZM Pad Sec.32-T1N-R66W	MD Reference:	WELL @ 5045.0ft (Ensign Rig #134 - RKB - 13')
Site Error:	0.0ft	North Reference:	True
Reference Well:	SRC Eberle P-32NHZ	Survey Calculation Method:	Minimum Curvature
Well Error:	0.0ft	Output errors are at	2.00 sigma
Reference Wellbore	Wellbore #1	Database:	landmark
Reference Design:	Plan #2 (3-14-14)	Offset TVD Reference:	Offset Datum

Offset Design													Offset Site Error:		0.0 ft
Survey Program: 0-MWD													Offset Well Error:		0.0 ft
Reference		Offset		Semi Major Axis			Distance								
Measured Depth (ft)	Vertical Depth (ft)	Measured Depth (ft)	Vertical Depth (ft)	Reference (ft)	Offset (ft)	Highside Toolface (°)	Offset Wellbore Centre +N/-S (ft)	+E/-W (ft)	Between Centres (ft)	Between Ellipses (ft)	Minimum Separation (ft)	Separation Factor	Warning		
0.0	0.0	0.0	0.0	0.0	0.0	-90.02	0.0	-45.4	45.4						
100.0	100.0	98.0	98.0	0.1	0.1	-90.02	0.0	-45.4	45.4	45.2	0.22	203.951			
200.0	200.0	198.0	198.0	0.3	0.3	-90.02	0.0	-45.4	45.4	44.7	0.67	67.757			
300.0	300.0	298.0	298.0	0.6	0.6	-90.02	0.0	-45.4	45.4	44.3	1.12	40.545			
400.0	400.0	398.0	398.0	0.8	0.8	-90.02	0.0	-45.4	45.4	43.8	1.57	28.928			
500.0	500.0	498.0	498.0	1.0	1.0	-90.02	0.0	-45.4	45.4	43.4	2.02	22.485			
600.0	600.0	598.0	598.0	1.2	1.2	-90.02	0.0	-45.4	45.4	42.9	2.47	18.389			
700.0	700.0	698.0	698.0	1.5	1.5	-90.02	0.0	-45.4	45.4	42.5	2.92	15.556			
800.0	800.0	798.0	798.0	1.7	1.7	-90.02	0.0	-45.4	45.4	42.0	3.37	13.479	CC, ES		
900.0	900.0	898.0	898.0	1.9	1.9	-165.68	0.0	-45.4	47.1	43.3	3.81	12.367			
1,000.0	999.8	997.8	997.8	2.1	2.1	-167.08	0.0	-45.4	52.2	47.9	4.24	12.311			
1,100.0	1,099.5	1,097.5	1,097.5	2.3	2.4	-168.89	0.0	-45.4	60.7	56.0	4.67	13.003			
1,200.0	1,198.7	1,196.7	1,196.7	2.6	2.6	-170.70	0.0	-45.4	72.7	67.6	5.10	14.263			
1,300.0	1,297.5	1,296.7	1,296.7	2.9	2.8	-172.61	-0.4	-44.7	87.1	81.6	5.51	15.799			
1,400.0	1,396.3	1,397.1	1,397.1	3.2	3.0	-174.61	-1.6	-42.4	100.6	94.6	5.92	16.987			
1,500.0	1,495.1	1,497.8	1,497.6	3.5	3.2	-176.70	-3.5	-38.5	112.8	106.4	6.34	17.789			
1,600.0	1,593.8	1,598.7	1,598.4	3.8	3.4	-178.90	-6.3	-33.0	123.8	117.0	6.77	18.280			
1,700.0	1,692.6	1,699.7	1,699.1	4.1	3.6	178.73	-9.9	-26.0	133.7	126.4	7.22	18.520			
1,800.0	1,791.4	1,800.9	1,799.8	4.5	3.8	176.19	-14.4	-17.4	142.5	134.8	7.68	18.556			
1,900.0	1,890.1	1,902.1	1,900.4	4.8	4.1	173.45	-19.6	-7.1	150.4	142.2	8.16	18.426			
2,000.0	1,988.9	2,003.3	2,000.7	5.2	4.3	170.48	-25.7	4.7	157.5	148.8	8.67	18.162			
2,100.0	2,087.7	2,104.4	2,100.7	5.5	4.6	167.28	-32.5	18.0	163.9	154.7	9.21	17.790			
2,200.0	2,186.5	2,205.4	2,200.2	5.9	4.9	163.83	-40.1	32.9	169.9	160.1	9.80	17.337			
2,300.0	2,285.2	2,306.2	2,299.3	6.2	5.3	160.12	-48.5	49.4	175.5	165.1	10.43	16.828			
2,400.0	2,384.0	2,406.0	2,397.2	6.6	5.6	156.25	-57.6	67.0	181.2	170.1	11.12	16.302			
2,500.0	2,482.8	2,505.1	2,494.3	6.9	6.0	152.57	-66.7	84.8	187.6	175.7	11.84	15.849			
2,600.0	2,581.5	2,604.2	2,591.3	7.3	6.4	149.15	-75.8	102.5	194.7	182.1	12.58	15.472			
2,700.0	2,680.3	2,703.3	2,688.4	7.7	6.7	145.98	-84.9	120.2	202.4	189.1	13.35	15.162			
2,800.0	2,779.1	2,802.4	2,785.4	8.0	7.1	143.05	-94.0	138.0	210.7	196.6	14.13	14.912			
2,900.0	2,877.8	2,901.5	2,882.5	8.4	7.5	140.34	-103.0	155.7	219.6	204.6	14.93	14.711			
3,000.0	2,976.6	3,000.6	2,979.6	8.8	7.9	137.85	-112.1	173.5	228.9	213.1	15.73	14.553			
3,100.0	3,075.4	3,099.7	3,076.6	9.1	8.4	135.55	-121.2	191.2	238.5	222.0	16.53	14.431			
3,200.0	3,174.1	3,198.7	3,173.7	9.5	8.8	133.43	-130.3	209.0	248.6	231.2	17.34	14.339			
3,300.0	3,272.9	3,297.8	3,270.8	9.8	9.2	131.48	-139.4	226.7	258.9	240.8	18.14	14.273			
3,400.0	3,371.7	3,396.9	3,367.8	10.2	9.6	129.68	-148.5	244.4	269.6	250.6	18.95	14.227			
3,500.0	3,470.4	3,496.0	3,464.9	10.6	10.0	128.02	-157.6	262.2	280.4	260.7	19.75	14.198			
3,600.0	3,569.2	3,595.1	3,561.9	10.9	10.4	126.48	-166.7	279.9	291.5	271.0	20.55	14.183			
3,700.0	3,668.0	3,694.2	3,659.0	11.3	10.9	125.05	-175.8	297.7	302.8	281.4	21.35	14.180			
3,800.0	3,766.7	3,793.3	3,756.1	11.7	11.3	123.73	-184.8	315.4	314.2	292.1	22.15	14.187			
3,900.0	3,865.5	3,892.4	3,853.1	12.0	11.7	122.50	-193.9	333.2	325.9	302.9	22.95	14.201			
4,000.0	3,964.3	3,991.5	3,950.2	12.4	12.2	121.35	-203.0	350.9	337.6	313.9	23.74	14.222			
4,100.0	4,063.0	4,090.5	4,047.2	12.8	12.6	120.29	-212.1	368.6	349.5	324.9	24.53	14.248			
4,200.0	4,161.8	4,189.6	4,144.3	13.1	13.0	119.29	-221.2	386.4	361.5	336.1	25.32	14.278			
4,300.0	4,260.6	4,288.7	4,241.4	13.5	13.5	118.36	-230.3	404.1	373.5	347.4	26.10	14.311			
4,400.0	4,359.4	4,387.8	4,338.4	13.9	13.9	117.48	-239.4	421.9	385.7	358.8	26.89	14.347			
4,500.0	4,458.1	4,486.9	4,435.5	14.2	14.3	116.66	-248.5	439.6	398.0	370.3	27.67	14.384			
4,600.0	4,556.9	4,586.0	4,532.6	14.6	14.8	115.89	-257.6	457.4	410.3	381.9	28.45	14.423			
4,700.0	4,655.7	4,685.1	4,629.6	15.0	15.2	115.16	-266.6	475.1	422.7	393.5	29.23	14.464			
4,800.0	4,754.4	4,784.2	4,726.7	15.4	15.6	114.47	-275.7	492.8	435.2	405.2	30.00	14.505			
4,900.0	4,853.2	4,883.2	4,823.7	15.7	16.1	113.82	-284.8	510.6	447.7	416.9	30.78	14.547			
5,000.0	4,952.0	4,982.3	4,920.8	16.1	16.5	113.21	-293.9	528.3	460.3	428.8	31.55	14.589			

CC - Min centre to center distance or convergent point, SF - min separation factor, ES - min ellipse separation

Company:	Synergy Resources	Local Co-ordinate Reference:	Well SRC Eberle P-32NHZ
Project:	SEC.32-T1N-R66W	TVD Reference:	WELL @ 5045.0ft (Ensign Rig #134 - RKB - 13')
Reference Site:	SRC Eberle 14-32-31CHZM Pad Sec.32-T1N-R66W	MD Reference:	WELL @ 5045.0ft (Ensign Rig #134 - RKB - 13')
Site Error:	0.0ft	North Reference:	True
Reference Well:	SRC Eberle P-32NHZ	Survey Calculation Method:	Minimum Curvature
Well Error:	0.0ft	Output errors are at	2.00 sigma
Reference Wellbore	Wellbore #1	Database:	landmark
Reference Design:	Plan #2 (3-14-14)	Offset TVD Reference:	Offset Datum

Offset Design		SRC Eberle 14-32-31CHZM Pad Sec.32-T1N-R66W - SRC Eberle B-32CHZ - Wellbore #1 - Plan #2 (3-										Offset Site Error:		0.0 ft
Survey Program: 0-MWD												Offset Well Error:		0.0 ft
Reference		Offset		Semi Major Axis			Distance							
Measured Depth	Vertical Depth	Measured Depth	Vertical Depth	Reference	Offset	Highside Toolface	Offset Wellbore Centre		Between Centres	Between Ellipses	Minimum Separation	Separation Factor	Warning	
(ft)	(ft)	(ft)	(ft)	(ft)	(ft)	(°)	+N/-S (ft)	+E/-W (ft)	(ft)	(ft)	(ft)			
5,100.0	5,050.7	5,081.4	5,017.9	16.5	17.0	112.63	-303.0	546.1	472.9	440.6	32.33	14.631		
5,200.0	5,149.5	5,180.5	5,114.9	16.8	17.4	112.08	-312.1	563.8	485.6	452.5	33.10	14.673		
5,300.0	5,248.3	5,279.6	5,212.0	17.2	17.8	111.56	-321.2	581.6	498.3	464.5	33.87	14.714		
5,400.0	5,347.0	5,378.7	5,309.1	17.6	18.3	111.07	-330.3	599.3	511.1	476.5	34.64	14.756		
5,500.0	5,445.8	5,477.8	5,406.1	17.9	18.7	110.59	-339.4	617.0	523.9	488.5	35.40	14.797		
5,600.0	5,544.6	5,576.9	5,503.2	18.3	19.2	110.14	-348.4	634.8	536.7	500.5	36.17	14.838		
5,700.0	5,643.3	5,676.0	5,600.2	18.7	19.6	109.72	-357.5	652.5	549.6	512.6	36.94	14.878		
5,800.0	5,742.1	5,775.0	5,697.3	19.0	20.0	109.31	-366.6	670.3	562.4	524.7	37.70	14.918		
5,900.0	5,840.9	5,874.1	5,794.4	19.4	20.5	108.92	-375.7	688.0	575.4	536.9	38.47	14.957		
6,000.0	5,939.6	5,973.2	5,891.4	19.8	20.9	108.54	-384.8	705.8	588.3	549.1	39.23	14.995		
6,100.0	6,038.4	6,072.3	5,988.5	20.2	21.4	108.19	-393.9	723.5	601.3	561.3	40.00	15.033		
6,200.0	6,137.2	6,171.4	6,085.6	20.5	21.8	107.84	-403.0	741.2	614.2	573.5	40.76	15.070		
6,300.0	6,236.1	6,270.5	6,182.6	20.8	22.3	107.61	-412.1	759.0	626.9	585.4	41.49	15.108		
6,400.0	6,335.5	6,375.4	6,285.5	21.1	22.7	107.12	-421.4	777.2	638.3	596.1	42.11	15.157		
6,500.0	6,435.2	6,485.1	6,393.8	21.3	23.0	106.57	-429.4	792.9	647.3	604.7	42.61	15.192		
6,600.0	6,535.2	6,595.6	6,503.4	21.4	23.3	105.99	-435.6	804.9	653.7	610.7	43.01	15.200		
6,700.0	6,635.2	6,706.5	6,614.0	21.6	23.5	-179.50	-439.9	813.2	657.7	624.0	33.69	19.520		
6,800.0	6,735.2	6,818.0	6,725.3	21.7	23.7	-179.89	-442.2	817.8	659.7	625.6	34.09	19.350		
6,900.0	6,835.0	6,925.7	6,833.0	21.8	23.8	-90.26	-442.6	818.6	660.1	616.3	43.87	15.047		
7,000.0	6,933.6	7,024.4	6,931.7	21.8	23.9	-91.65	-442.6	818.6	660.4	616.5	43.88	15.049		
7,100.0	7,028.8	7,126.2	7,033.1	21.6	24.0	-93.55	-442.6	810.5	661.5	617.8	43.65	15.153		
7,200.0	7,119.0	7,231.6	7,135.8	21.4	23.9	-95.42	-442.6	787.1	663.2	620.0	43.21	15.351		
7,300.0	7,202.3	7,340.8	7,237.3	21.2	23.7	-97.20	-442.6	747.3	665.6	623.0	42.62	15.617		
7,400.0	7,277.0	7,453.9	7,334.8	21.0	23.5	-98.86	-442.6	690.3	668.4	626.4	42.02	15.907		
7,500.0	7,341.9	7,570.9	7,425.0	20.9	23.2	-100.35	-442.6	615.9	671.3	629.8	41.57	16.149		
7,600.0	7,395.5	7,691.7	7,504.2	21.0	23.1	-101.63	-442.6	524.8	674.2	632.7	41.50	16.246		
7,700.0	7,436.9	7,815.8	7,568.3	21.3	23.1	-102.64	-442.6	418.8	676.7	634.6	42.03	16.099		
7,800.0	7,465.2	7,942.6	7,614.0	22.0	23.4	-103.35	-442.6	300.7	678.5	635.2	43.33	15.660		
7,900.0	7,479.8	8,071.1	7,638.3	23.0	24.2	-103.73	-442.6	174.7	679.5	634.1	45.43	14.959		
8,000.0	7,482.0	8,187.5	7,642.0	24.2	25.4	-103.79	-442.6	58.5	679.7	631.7	48.00	14.161		
8,100.0	7,482.0	8,287.5	7,642.0	25.6	26.7	-103.79	-442.6	-41.5	679.7	628.9	50.82	13.374		
8,200.0	7,482.0	8,387.5	7,642.0	27.3	28.2	-103.79	-442.6	-141.5	679.7	625.7	54.05	12.576		
8,300.0	7,482.0	8,487.5	7,642.0	29.2	30.0	-103.79	-442.6	-241.5	679.7	622.1	57.61	11.799		
8,400.0	7,482.0	8,587.5	7,642.0	31.2	31.9	-103.79	-442.6	-341.5	679.7	618.3	61.45	11.061		
8,500.0	7,482.0	8,687.5	7,642.0	33.3	34.0	-103.79	-442.6	-441.5	679.7	614.2	65.52	10.374		
8,600.0	7,482.0	8,787.5	7,642.0	35.5	36.1	-103.79	-442.6	-541.5	679.7	609.9	69.78	9.740		
8,700.0	7,482.0	8,887.5	7,642.0	37.8	38.4	-103.79	-442.6	-641.5	679.7	605.5	74.20	9.160		
8,800.0	7,482.0	8,987.5	7,642.0	40.1	40.7	-103.79	-442.6	-741.5	679.7	600.9	78.75	8.631		
8,900.0	7,482.0	9,087.5	7,642.0	42.6	43.1	-103.79	-442.6	-841.5	679.7	596.3	83.41	8.149		
9,000.0	7,482.0	9,187.5	7,642.0	45.0	45.5	-103.79	-442.6	-941.5	679.7	591.5	88.16	7.710		
9,100.0	7,482.0	9,287.5	7,642.0	47.5	48.0	-103.79	-442.6	-1,041.5	679.7	586.7	92.99	7.309		
9,200.0	7,482.0	9,387.5	7,642.0	50.0	50.5	-103.79	-442.6	-1,141.5	679.7	581.8	97.89	6.944		
9,300.0	7,482.0	9,487.5	7,642.0	52.6	53.0	-103.79	-442.6	-1,241.5	679.7	576.9	102.84	6.609		
9,400.0	7,482.0	9,587.5	7,642.0	55.2	55.6	-103.79	-442.6	-1,341.5	679.7	571.9	107.84	6.303		
9,500.0	7,482.0	9,687.5	7,642.0	57.8	58.2	-103.79	-442.6	-1,441.5	679.7	566.8	112.88	6.021		
9,600.0	7,482.0	9,787.5	7,642.0	60.4	60.8	-103.79	-442.6	-1,541.5	679.7	561.7	117.97	5.762		
9,700.0	7,482.0	9,887.5	7,642.0	63.0	63.4	-103.79	-442.6	-1,641.5	679.7	556.6	123.08	5.522		
9,800.0	7,482.0	9,987.5	7,642.0	65.7	66.0	-103.79	-442.6	-1,741.5	679.7	551.5	128.22	5.301		
9,900.0	7,482.0	10,087.5	7,642.0	68.3	68.7	-103.79	-442.6	-1,841.5	679.7	546.3	133.39	5.095		
10,000.0	7,482.0	10,187.5	7,642.0	71.0	71.4	-103.79	-442.6	-1,941.5	679.7	541.1	138.58	4.905		

CC - Min centre to center distance or convergent point, SF - min separation factor, ES - min ellipse separation

Company:	Synergy Resources	Local Co-ordinate Reference:	Well SRC Eberle P-32NHZ
Project:	SEC.32-T1N-R66W	TVD Reference:	WELL @ 5045.0ft (Ensign Rig #134 - RKB - 13')
Reference Site:	SRC Eberle 14-32-31CHZM Pad Sec.32-T1N-R66W	MD Reference:	WELL @ 5045.0ft (Ensign Rig #134 - RKB - 13')
Site Error:	0.0ft	North Reference:	True
Reference Well:	SRC Eberle P-32NHZ	Survey Calculation Method:	Minimum Curvature
Well Error:	0.0ft	Output errors are at	2.00 sigma
Reference Wellbore	Wellbore #1	Database:	landmark
Reference Design:	Plan #2 (3-14-14)	Offset TVD Reference:	Offset Datum

Offset Design		SRC Eberle 14-32-31CHZM Pad Sec.32-T1N-R66W - SRC Eberle B-32CHZ - Wellbore #1 - Plan #2 (3-										Offset Site Error:		0.0 ft
Survey Program:		0-MWD										Offset Well Error:		0.0 ft
Reference		Offset		Semi Major Axis			Distance							Warning
Measured Depth (ft)	Vertical Depth (ft)	Measured Depth (ft)	Vertical Depth (ft)	Reference (ft)	Offset (ft)	Highside Toolface (°)	Offset Wellbore Centre +N/-S (ft)	+E/-W (ft)	Between Centres (ft)	Between Ellipses (ft)	Minimum Separation (ft)	Separation Factor		
10,100.0	7,482.0	10,287.5	7,642.0	73.7	74.0	-103.79	-442.6	-2,041.5	679.7	535.9	143.79	4.727		
10,200.0	7,482.0	10,387.5	7,642.0	76.4	76.7	-103.79	-442.6	-2,141.5	679.7	530.7	149.02	4.561		
10,300.0	7,482.0	10,487.5	7,642.0	79.1	79.4	-103.79	-442.6	-2,241.5	679.7	525.4	154.26	4.406		
10,400.0	7,482.0	10,587.5	7,642.0	81.8	82.1	-103.79	-442.6	-2,341.5	679.7	520.2	159.52	4.261		
10,500.0	7,482.0	10,687.5	7,642.0	84.5	84.8	-103.79	-442.6	-2,441.5	679.7	514.9	164.80	4.124		
10,600.0	7,482.0	10,787.5	7,642.0	87.2	87.5	-103.79	-442.6	-2,541.5	679.7	509.6	170.08	3.996		
10,700.0	7,482.0	10,887.5	7,642.0	89.9	90.2	-103.79	-442.6	-2,641.5	679.7	504.3	175.38	3.876		
10,800.0	7,482.0	10,987.5	7,642.0	92.7	92.9	-103.79	-442.6	-2,741.5	679.7	499.0	180.68	3.762		
10,900.0	7,482.0	11,087.5	7,642.0	95.4	95.7	-103.79	-442.6	-2,841.5	679.7	493.7	185.99	3.654		
11,000.0	7,482.0	11,187.5	7,642.0	98.1	98.4	-103.79	-442.6	-2,941.5	679.7	488.4	191.32	3.553		
11,100.0	7,482.0	11,287.5	7,642.0	100.9	101.1	-103.79	-442.6	-3,041.5	679.7	483.0	196.65	3.456		
11,200.0	7,482.0	11,387.5	7,642.0	103.6	103.9	-103.79	-442.6	-3,141.5	679.7	477.7	201.98	3.365		
11,300.0	7,482.0	11,487.5	7,642.0	106.4	106.6	-103.79	-442.6	-3,241.5	679.7	472.4	207.33	3.278		
11,400.0	7,482.0	11,587.5	7,642.0	109.1	109.4	-103.79	-442.6	-3,341.5	679.7	467.0	212.67	3.196		
11,500.0	7,482.0	11,687.5	7,642.0	111.9	112.1	-103.79	-442.6	-3,441.5	679.7	461.7	218.03	3.117		
11,600.0	7,482.0	11,787.5	7,642.0	114.6	114.9	-103.79	-442.6	-3,541.5	679.7	456.3	223.39	3.043		
11,700.0	7,482.0	11,887.5	7,642.0	117.4	117.6	-103.79	-442.6	-3,641.5	679.7	450.9	228.75	2.971		
11,800.0	7,482.0	11,987.5	7,642.0	120.1	120.4	-103.79	-442.6	-3,741.5	679.7	445.6	234.12	2.903		
11,900.0	7,482.0	12,087.5	7,642.0	122.9	123.1	-103.79	-442.6	-3,841.5	679.7	440.2	239.50	2.838		
12,000.0	7,482.0	12,187.5	7,642.0	125.6	125.9	-103.79	-442.6	-3,941.5	679.7	434.8	244.87	2.776		
12,002.3	7,482.0	12,189.8	7,642.0	125.7	125.9	-103.79	-442.6	-3,943.9	679.7	434.7	245.00	2.774 SF		

Company:	Synergy Resources	Local Co-ordinate Reference:	Well SRC Eberle P-32NHZ
Project:	SEC.32-T1N-R66W	TVD Reference:	WELL @ 5045.0ft (Ensign Rig #134 - RKB - 13')
Reference Site:	SRC Eberle 14-32-31CHZM Pad Sec.32-T1N-R66W	MD Reference:	WELL @ 5045.0ft (Ensign Rig #134 - RKB - 13')
Site Error:	0.0ft	North Reference:	True
Reference Well:	SRC Eberle P-32NHZ	Survey Calculation Method:	Minimum Curvature
Well Error:	0.0ft	Output errors are at	2.00 sigma
Reference Wellbore	Wellbore #1	Database:	landmark
Reference Design:	Plan #2 (3-14-14)	Offset TVD Reference:	Offset Datum

Offset Design		SRC Eberle 14-32-31CHZM Pad Sec.32-T1N-R66W - SRC Eberle B-32NHZ - Wellbore #1 - Plan #2 (3-										Offset Site Error:		0.0 ft
Survey Program: 0-MWD												Offset Well Error:		0.0 ft
Reference		Offset		Semi Major Axis			Distance							Warning
Measured Depth (ft)	Vertical Depth (ft)	Measured Depth (ft)	Vertical Depth (ft)	Reference (ft)	Offset (ft)	Highside Toolface (°)	Offset Wellbore Centre +N/-S (ft)	+E/-W (ft)	Between Centres (ft)	Between Ellipses (ft)	Minimum Separation (ft)	Separation Factor		
0.0	0.0	0.0	0.0	0.0	0.0	-89.97	0.0	-68.1	68.1					
100.0	100.0	97.0	97.0	0.1	0.1	-89.97	0.0	-68.1	68.1	67.9	0.22	307.477		
200.0	200.0	197.0	197.0	0.3	0.3	-89.97	0.0	-68.1	68.1	67.4	0.67	101.978		
300.0	300.0	297.0	297.0	0.6	0.6	-89.97	0.0	-68.1	68.1	67.0	1.12	60.940		
400.0	400.0	397.0	397.0	0.8	0.8	-89.97	0.0	-68.1	68.1	66.5	1.57	43.454		
500.0	500.0	497.0	497.0	1.0	1.0	-89.97	0.0	-68.1	68.1	66.1	2.02	33.765		
600.0	600.0	597.0	597.0	1.2	1.2	-89.97	0.0	-68.1	68.1	65.6	2.47	27.609		
700.0	700.0	697.0	697.0	1.5	1.5	-89.97	0.0	-68.1	68.1	65.2	2.92	23.352		
800.0	800.0	797.0	797.0	1.7	1.7	-89.97	0.0	-68.1	68.1	64.7	3.36	20.232	CC, ES	
900.0	900.0	897.0	897.0	1.9	1.9	-165.46	0.0	-68.1	69.8	66.0	3.80	18.339		
1,000.0	999.8	996.8	996.8	2.1	2.1	-166.44	0.0	-68.1	74.8	70.6	4.23	17.674		
1,100.0	1,099.5	1,096.5	1,096.5	2.3	2.4	-167.81	0.0	-68.1	83.3	78.7	4.66	17.865		
1,200.0	1,198.7	1,195.7	1,195.7	2.6	2.6	-169.31	0.0	-68.1	95.3	90.2	5.09	18.706		
1,300.0	1,297.5	1,294.5	1,294.5	2.9	2.8	-170.75	0.0	-68.1	110.3	104.8	5.53	19.948		
1,400.0	1,396.3	1,393.3	1,393.3	3.2	3.0	-171.90	0.0	-68.1	125.8	119.8	5.97	21.054		
1,500.0	1,495.1	1,494.2	1,494.2	3.5	3.2	-172.93	-0.2	-67.3	140.6	134.2	6.41	21.936		
1,600.0	1,593.8	1,595.7	1,595.7	3.8	3.4	-174.02	-0.8	-64.8	153.8	147.0	6.83	22.515		
1,700.0	1,692.6	1,697.6	1,697.4	4.1	3.6	-175.20	-1.8	-60.6	165.5	158.2	7.26	22.787		
1,800.0	1,791.4	1,799.8	1,799.4	4.5	3.8	-176.47	-3.4	-54.6	175.6	167.9	7.70	22.803		
1,900.0	1,890.1	1,902.2	1,901.5	4.8	4.1	-177.86	-5.3	-46.7	184.2	176.1	8.15	22.607		
2,000.0	1,988.9	2,004.8	2,003.7	5.2	4.3	-179.38	-7.7	-37.1	191.3	182.7	8.61	22.234		
2,100.0	2,087.7	2,107.5	2,105.7	5.5	4.6	178.95	-10.6	-25.8	197.0	188.0	9.08	21.712		
2,200.0	2,186.5	2,210.3	2,207.6	5.9	4.8	177.10	-13.9	-12.6	201.4	191.8	9.56	21.065		
2,300.0	2,285.2	2,313.1	2,309.2	6.2	5.1	175.04	-17.6	2.3	204.4	194.3	10.06	20.311		
2,400.0	2,384.0	2,415.8	2,410.5	6.6	5.4	172.76	-21.8	19.0	206.2	195.6	10.59	19.471		
2,500.0	2,482.8	2,518.3	2,511.2	6.9	5.7	170.21	-26.4	37.4	206.9	195.8	11.15	18.557		
2,600.0	2,581.5	2,620.1	2,611.0	7.3	6.1	167.38	-31.5	57.4	206.7	194.9	11.75	17.592		
2,681.0	2,661.5	2,700.7	2,689.7	7.6	6.4	165.05	-35.5	73.7	206.5	194.3	12.26	16.849		
2,700.0	2,680.3	2,719.6	2,708.2	7.7	6.5	164.50	-36.5	77.5	206.5	194.1	12.38	16.682		
2,800.0	2,779.1	2,819.1	2,805.5	8.0	6.8	161.63	-41.5	97.6	206.9	193.8	13.05	15.856		
2,900.0	2,877.8	2,918.5	2,902.8	8.4	7.2	158.77	-46.6	117.7	207.8	194.0	13.75	15.110		
3,000.0	2,976.6	3,018.0	3,000.0	8.8	7.6	155.94	-51.6	137.8	209.2	194.7	14.49	14.439		
3,100.0	3,075.4	3,117.4	3,097.3	9.1	8.0	153.16	-56.7	157.9	211.1	195.8	15.25	13.838		
3,200.0	3,174.1	3,216.9	3,194.6	9.5	8.4	150.43	-61.7	178.0	213.5	197.5	16.05	13.302		
3,300.0	3,272.9	3,316.3	3,291.9	9.8	8.8	147.77	-66.8	198.0	216.4	199.5	16.87	12.826		
3,400.0	3,371.7	3,415.8	3,389.1	10.2	9.3	145.18	-71.8	218.1	219.7	202.0	17.71	12.406		
3,500.0	3,470.4	3,515.2	3,486.4	10.6	9.7	142.68	-76.8	238.2	223.5	204.9	18.57	12.038		
3,600.0	3,569.2	3,614.7	3,583.7	10.9	10.1	140.26	-81.9	258.3	227.7	208.3	19.44	11.715		
3,700.0	3,668.0	3,714.1	3,681.0	11.3	10.5	137.93	-86.9	278.4	232.3	212.0	20.32	11.434		
3,800.0	3,766.7	3,813.6	3,778.2	11.7	11.0	135.70	-92.0	298.5	237.3	216.0	21.20	11.191		
3,900.0	3,865.5	3,913.0	3,875.5	12.0	11.4	133.56	-97.0	318.6	242.6	220.5	22.09	10.981		
4,000.0	3,964.3	4,012.5	3,972.8	12.4	11.8	131.51	-102.0	338.7	248.2	225.2	22.98	10.801		
4,100.0	4,063.0	4,112.0	4,070.1	12.8	12.3	129.55	-107.1	358.8	254.1	230.3	23.87	10.647		
4,200.0	4,161.8	4,211.4	4,167.3	13.1	12.7	127.69	-112.1	378.8	260.3	235.6	24.76	10.516		
4,300.0	4,260.6	4,310.9	4,264.6	13.5	13.2	125.92	-117.2	398.9	266.8	241.2	25.64	10.407		
4,400.0	4,359.4	4,410.3	4,361.9	13.9	13.6	124.22	-122.2	419.0	273.6	247.0	26.52	10.315		
4,500.0	4,458.1	4,509.8	4,459.2	14.2	14.0	122.62	-127.2	439.1	280.5	253.1	27.40	10.239		
4,600.0	4,556.9	4,609.2	4,556.4	14.6	14.5	121.09	-132.3	459.2	287.7	259.4	28.27	10.177		
4,700.0	4,655.7	4,708.7	4,653.7	15.0	14.9	119.63	-137.3	479.3	295.0	265.9	29.13	10.128		
4,800.0	4,754.4	4,808.1	4,751.0	15.4	15.4	118.25	-142.4	499.4	302.6	272.6	29.99	10.089		
4,900.0	4,853.2	4,907.6	4,848.2	15.7	15.8	116.93	-147.4	519.5	310.3	279.5	30.84	10.060		

CC - Min centre to center distance or convergent point, SF - min separation factor, ES - min ellipse separation

Company:	Synergy Resources	Local Co-ordinate Reference:	Well SRC Eberle P-32NHZ
Project:	SEC.32-T1N-R66W	TVD Reference:	WELL @ 5045.0ft (Ensign Rig #134 - RKB - 13')
Reference Site:	SRC Eberle 14-32-31CHZM Pad Sec.32-T1N-R66W	MD Reference:	WELL @ 5045.0ft (Ensign Rig #134 - RKB - 13')
Site Error:	0.0ft	North Reference:	True
Reference Well:	SRC Eberle P-32NHZ	Survey Calculation Method:	Minimum Curvature
Well Error:	0.0ft	Output errors are at	2.00 sigma
Reference Wellbore	Wellbore #1	Database:	landmark
Reference Design:	Plan #2 (3-14-14)	Offset TVD Reference:	Offset Datum

Offset Design		SRC Eberle 14-32-31CHZM Pad Sec.32-T1N-R66W - SRC Eberle B-32NHZ - Wellbore #1 - Plan #2 (3-										Offset Site Error:		0.0 ft
Survey Program: 0-MWD												Offset Well Error:		0.0 ft
Reference		Offset		Semi Major Axis			Distance							Warning
Measured Depth (ft)	Vertical Depth (ft)	Measured Depth (ft)	Vertical Depth (ft)	Reference (ft)	Offset (ft)	Highside Toolface (°)	Offset Wellbore Centre +N/-S (ft)	+E/-W (ft)	Between Centres (ft)	Between Ellipses (ft)	Minimum Separation (ft)	Separation Factor		
5,000.0	4,952.0	5,007.0	4,945.5	16.1	16.3	115.68	-152.5	539.5	318.2	286.5	31.69	10.039		
5,100.0	5,050.7	5,106.5	5,042.8	16.5	16.7	114.49	-157.5	559.6	326.2	293.6	32.53	10.025		
5,200.0	5,149.5	5,206.0	5,140.1	16.8	17.2	113.35	-162.5	579.7	334.3	300.9	33.37	10.018		
5,300.0	5,248.3	5,305.4	5,237.3	17.2	17.6	112.27	-167.6	599.8	342.6	308.4	34.20	10.016		
5,400.0	5,347.0	5,404.9	5,334.6	17.6	18.1	111.25	-172.6	619.9	351.0	315.9	35.03	10.019		
5,500.0	5,445.8	5,504.3	5,431.9	17.9	18.5	110.27	-177.7	640.0	359.5	323.6	35.85	10.026		
5,600.0	5,544.6	5,603.8	5,529.2	18.3	19.0	109.33	-182.7	660.1	368.0	331.4	36.67	10.036		
5,700.0	5,643.3	5,703.2	5,626.4	18.7	19.4	108.44	-187.7	680.2	376.7	339.2	37.48	10.050		
5,800.0	5,742.1	5,802.7	5,723.7	19.0	19.9	107.59	-192.8	700.2	385.5	347.2	38.29	10.067		
5,900.0	5,840.9	5,902.1	5,821.0	19.4	20.3	106.77	-197.8	720.3	394.4	355.3	39.10	10.086		
6,000.0	5,939.6	6,001.6	5,918.3	19.8	20.8	105.99	-202.9	740.4	403.3	363.4	39.90	10.107		
6,100.0	6,038.4	6,101.5	6,016.0	20.2	21.2	105.25	-207.9	760.6	412.3	371.6	40.69	10.131		
6,200.0	6,137.2	6,204.6	6,117.3	20.5	21.6	104.82	-212.6	779.2	420.8	379.4	41.38	10.169		
6,300.0	6,236.1	6,308.0	6,219.5	20.8	21.8	104.83	-216.4	794.3	428.2	386.2	41.99	10.196		
6,400.0	6,335.5	6,411.6	6,322.4	21.1	22.1	104.87	-219.3	805.8	433.8	391.3	42.48	10.211		
6,500.0	6,435.2	6,515.3	6,425.8	21.3	22.3	104.89	-221.3	813.8	437.6	394.7	42.89	10.204		
6,600.0	6,535.2	6,619.2	6,529.5	21.4	22.5	104.89	-222.4	818.1	439.7	396.5	43.22	10.173		
6,700.0	6,635.2	6,721.8	6,632.2	21.6	22.6	-179.99	-222.6	818.9	440.1	408.0	32.08	13.716		
6,800.0	6,735.2	6,821.8	6,732.2	21.7	22.7	-179.99	-222.6	818.9	440.1	407.6	32.45	13.561		
6,841.5	6,776.6	6,863.3	6,773.6	21.8	22.8	-90.09	-222.6	818.9	440.1	396.2	43.87	10.031		
6,900.0	6,835.0	6,921.8	6,832.1	21.8	22.8	-90.03	-222.6	815.9	440.1	396.1	43.97	10.008		
7,000.0	6,933.6	7,021.8	6,930.7	21.8	22.8	-90.08	-222.6	799.7	440.1	396.2	43.91	10.022		
7,100.0	7,028.8	7,122.0	7,026.2	21.6	22.7	-90.13	-222.6	769.9	440.1	396.4	43.63	10.086		
7,200.0	7,119.0	7,222.1	7,116.7	21.4	22.5	-90.18	-222.6	727.1	440.1	396.8	43.22	10.182		
7,300.0	7,202.3	7,322.4	7,200.3	21.2	22.2	-90.23	-222.6	672.0	440.1	397.3	42.77	10.290		
7,400.0	7,277.0	7,422.6	7,275.5	21.0	22.1	-90.27	-222.6	605.8	440.1	397.7	42.41	10.377		
7,500.0	7,341.9	7,522.9	7,340.8	20.9	22.0	-90.31	-222.6	529.7	440.1	397.8	42.30	10.404		
7,600.0	7,395.5	7,623.3	7,394.8	21.0	22.1	-90.34	-222.6	445.3	440.1	397.5	42.59	10.333		
7,700.0	7,436.9	7,723.7	7,436.5	21.3	22.4	-90.36	-222.6	354.0	440.1	396.7	43.40	10.139		
7,800.0	7,465.2	7,824.1	7,465.0	22.0	23.1	-90.38	-222.6	257.9	440.1	395.3	44.80	9.822		
7,900.0	7,479.8	7,924.5	7,479.8	23.0	24.0	-90.39	-222.6	158.6	440.1	393.3	46.76	9.410		
8,000.0	7,482.0	8,024.7	7,482.0	24.2	25.1	-90.39	-222.6	58.5	440.1	390.9	49.22	8.941		
8,100.0	7,482.0	8,124.7	7,482.0	25.6	26.5	-90.39	-222.6	-41.5	440.1	388.0	52.13	8.443		
8,200.0	7,482.0	8,224.7	7,482.0	27.3	28.2	-90.39	-222.6	-141.5	440.1	384.6	55.45	7.937		
8,300.0	7,482.0	8,324.7	7,482.0	29.2	30.0	-90.39	-222.6	-241.5	440.1	381.0	59.12	7.444		
8,400.0	7,482.0	8,424.7	7,482.0	31.2	31.9	-90.39	-222.6	-341.5	440.1	377.0	63.07	6.977		
8,500.0	7,482.0	8,524.7	7,482.0	33.3	34.0	-90.39	-222.6	-441.5	440.1	372.8	67.27	6.542		
8,600.0	7,482.0	8,624.7	7,482.0	35.5	36.2	-90.39	-222.6	-541.5	440.1	368.4	71.65	6.142		
8,700.0	7,482.0	8,724.7	7,482.0	37.8	38.4	-90.39	-222.6	-641.5	440.1	363.9	76.20	5.776		
8,800.0	7,482.0	8,824.7	7,482.0	40.1	40.7	-90.39	-222.6	-741.5	440.1	359.2	80.88	5.441		
8,900.0	7,482.0	8,924.7	7,482.0	42.6	43.1	-90.39	-222.6	-841.5	440.1	354.4	85.67	5.137		
9,000.0	7,482.0	9,024.7	7,482.0	45.0	45.6	-90.39	-222.6	-941.5	440.1	349.5	90.55	4.860		
9,100.0	7,482.0	9,124.7	7,482.0	47.5	48.0	-90.39	-222.6	-1,041.5	440.1	344.6	95.52	4.607		
9,200.0	7,482.0	9,224.7	7,482.0	50.0	50.5	-90.39	-222.6	-1,141.5	440.1	339.5	100.55	4.377		
9,300.0	7,482.0	9,324.7	7,482.0	52.6	53.1	-90.39	-222.6	-1,241.5	440.1	334.4	105.64	4.166		
9,400.0	7,482.0	9,424.7	7,482.0	55.2	55.6	-90.39	-222.6	-1,341.5	440.1	329.3	110.78	3.972		
9,500.0	7,482.0	9,524.7	7,482.0	57.8	58.2	-90.39	-222.6	-1,441.5	440.1	324.1	115.97	3.795		
9,600.0	7,482.0	9,624.7	7,482.0	60.4	60.8	-90.39	-222.6	-1,541.5	440.1	318.9	121.19	3.631		
9,700.0	7,482.0	9,724.7	7,482.0	63.0	63.4	-90.39	-222.6	-1,641.5	440.1	313.6	126.44	3.480		
9,800.0	7,482.0	9,824.7	7,482.0	65.7	66.1	-90.39	-222.6	-1,741.5	440.1	308.3	131.73	3.341		

CC - Min centre to center distance or convergent point, SF - min separation factor, ES - min ellipse separation

Company:	Synergy Resources	Local Co-ordinate Reference:	Well SRC Eberle P-32NHZ
Project:	SEC.32-T1N-R66W	TVD Reference:	WELL @ 5045.0ft (Ensign Rig #134 - RKB - 13')
Reference Site:	SRC Eberle 14-32-31CHZM Pad Sec.32-T1N-R66W	MD Reference:	WELL @ 5045.0ft (Ensign Rig #134 - RKB - 13')
Site Error:	0.0ft	North Reference:	True
Reference Well:	SRC Eberle P-32NHZ	Survey Calculation Method:	Minimum Curvature
Well Error:	0.0ft	Output errors are at	2.00 sigma
Reference Wellbore	Wellbore #1	Database:	landmark
Reference Design:	Plan #2 (3-14-14)	Offset TVD Reference:	Offset Datum

Offset Design SRC Eberle 14-32-31CHZM Pad Sec.32-T1N-R66W - SRC Eberle B-32NHZ - Wellbore #1 - Plan #2 (3-													Offset Site Error:	0.0 ft
Survey Program: 0-MWD													Offset Well Error:	0.0 ft
Reference		Offset		Semi Major Axis			Distance							Warning
Measured Depth (ft)	Vertical Depth (ft)	Measured Depth (ft)	Vertical Depth (ft)	Reference (ft)	Offset (ft)	Highside Toolface (°)	Offset Wellbore Centre +N/-S (ft)	+E/-W (ft)	Between Centres (ft)	Between Ellipses (ft)	Minimum Separation (ft)	Separation Factor		
9,900.0	7,482.0	9,924.7	7,482.0	68.3	68.7	-90.39	-222.6	-1,841.5	440.1	303.0	137.04	3.211		
10,000.0	7,482.0	10,024.7	7,482.0	71.0	71.4	-90.39	-222.6	-1,941.5	440.1	297.7	142.37	3.091		
10,100.0	7,482.0	10,124.7	7,482.0	73.7	74.1	-90.39	-222.6	-2,041.5	440.1	292.4	147.73	2.979		
10,200.0	7,482.0	10,224.7	7,482.0	76.4	76.7	-90.39	-222.6	-2,141.5	440.1	287.0	153.10	2.874		
10,300.0	7,482.0	10,324.7	7,482.0	79.1	79.4	-90.39	-222.6	-2,241.5	440.1	281.6	158.49	2.777		
10,400.0	7,482.0	10,424.7	7,482.0	81.8	82.1	-90.39	-222.6	-2,341.5	440.1	276.2	163.89	2.685		
10,500.0	7,482.0	10,524.7	7,482.0	84.5	84.8	-90.39	-222.6	-2,441.5	440.1	270.8	169.30	2.599		
10,600.0	7,482.0	10,624.7	7,482.0	87.2	87.6	-90.39	-222.6	-2,541.5	440.1	265.3	174.73	2.519		
10,700.0	7,482.0	10,724.7	7,482.0	89.9	90.3	-90.39	-222.6	-2,641.5	440.1	259.9	180.17	2.443		
10,800.0	7,482.0	10,824.7	7,482.0	92.7	93.0	-90.39	-222.6	-2,741.5	440.1	254.5	185.62	2.371		
10,900.0	7,482.0	10,924.7	7,482.0	95.4	95.7	-90.39	-222.6	-2,841.5	440.1	249.0	191.08	2.303		
11,000.0	7,482.0	11,024.7	7,482.0	98.1	98.4	-90.39	-222.6	-2,941.5	440.1	243.5	196.55	2.239		
11,100.0	7,482.0	11,124.7	7,482.0	100.9	101.2	-90.39	-222.6	-3,041.5	440.1	238.1	202.02	2.178		
11,200.0	7,482.0	11,224.7	7,482.0	103.6	103.9	-90.39	-222.6	-3,141.5	440.1	232.6	207.51	2.121		
11,300.0	7,482.0	11,324.7	7,482.0	106.4	106.7	-90.39	-222.6	-3,241.5	440.1	227.1	212.99	2.066		
11,400.0	7,482.0	11,424.7	7,482.0	109.1	109.4	-90.39	-222.6	-3,341.5	440.1	221.6	218.49	2.014		
11,500.0	7,482.0	11,524.7	7,482.0	111.9	112.2	-90.39	-222.6	-3,441.5	440.1	216.1	223.99	1.965		
11,600.0	7,482.0	11,624.7	7,482.0	114.6	114.9	-90.39	-222.6	-3,541.5	440.1	210.6	229.50	1.918		
11,700.0	7,482.0	11,724.7	7,482.0	117.4	117.7	-90.39	-222.6	-3,641.5	440.1	205.1	235.01	1.873		
11,800.0	7,482.0	11,824.7	7,482.0	120.1	120.4	-90.39	-222.6	-3,741.5	440.1	199.6	240.52	1.830		
11,900.0	7,482.0	11,924.7	7,482.0	122.9	123.2	-90.39	-222.6	-3,841.5	440.1	194.0	246.04	1.789		
12,000.0	7,482.0	12,024.7	7,482.0	125.6	125.9	-90.39	-222.6	-3,941.5	440.1	188.5	251.56	1.749		
12,002.3	7,482.0	12,027.0	7,482.0	125.7	126.0	-90.39	-222.6	-3,943.9	440.1	188.4	251.69	1.748 SF		

Company:	Synergy Resources	Local Co-ordinate Reference:	Well SRC Eberle P-32NHZ
Project:	SEC.32-T1N-R66W	TVD Reference:	WELL @ 5045.0ft (Ensign Rig #134 - RKB - 13')
Reference Site:	SRC Eberle 14-32-31CHZM Pad Sec.32-T1N-R66W	MD Reference:	WELL @ 5045.0ft (Ensign Rig #134 - RKB - 13')
Site Error:	0.0ft	North Reference:	True
Reference Well:	SRC Eberle P-32NHZ	Survey Calculation Method:	Minimum Curvature
Well Error:	0.0ft	Output errors are at	2.00 sigma
Reference Wellbore	Wellbore #1	Database:	landmark
Reference Design:	Plan #2 (3-14-14)	Offset TVD Reference:	Offset Datum

Offset Design													Offset Site Error:		0.0 ft
Survey Program: 0-MWD													Offset Well Error:		0.0 ft
Reference		Offset		Semi Major Axis			Distance						Warning		
Measured Depth (ft)	Vertical Depth (ft)	Measured Depth (ft)	Vertical Depth (ft)	Reference (ft)	Offset (ft)	Highside Toolface (°)	Offset Wellbore Centre +N/-S (ft)	+E/-W (ft)	Between Centres (ft)	Between Ellipses (ft)	Minimum Separation (ft)	Separation Factor			
0.0	0.0	0.0	0.0	0.0	0.0	-90.04	0.0	-22.7	22.7						
100.0	100.0	99.0	99.0	0.1	0.1	-90.04	0.0	-22.7	22.7	22.5	0.22	101.464			
200.0	200.0	199.0	199.0	0.3	0.3	-90.04	0.0	-22.7	22.7	22.0	0.67	33.765			
300.0	300.0	299.0	299.0	0.6	0.6	-90.04	0.0	-22.7	22.7	21.6	1.12	20.232			
400.0	400.0	399.0	399.0	0.8	0.8	-90.04	0.0	-22.7	22.7	21.1	1.57	14.443			
500.0	500.0	499.0	499.0	1.0	1.0	-90.04	0.0	-22.7	22.7	20.7	2.02	11.230			
600.0	600.0	599.0	599.0	1.2	1.2	-90.04	0.0	-22.7	22.7	20.2	2.47	9.186			
700.0	700.0	699.0	699.0	1.5	1.5	-90.04	0.0	-22.7	22.7	19.8	2.92	7.772			
800.0	800.0	799.0	799.0	1.7	1.7	-90.04	0.0	-22.7	22.7	19.3	3.37	6.735 CC, ES			
900.0	900.0	899.0	899.0	1.9	1.9	-166.21	0.0	-22.7	24.4	20.6	3.81	6.402			
1,000.0	999.8	998.8	998.8	2.1	2.1	-168.62	0.0	-22.7	29.5	25.3	4.24	6.957			
1,100.0	1,099.5	1,099.1	1,099.1	2.3	2.3	-171.34	0.0	-21.8	37.2	32.6	4.66	7.998			
1,200.0	1,198.7	1,199.3	1,199.3	2.6	2.5	-173.94	0.0	-19.2	46.8	41.7	5.06	9.243			
1,300.0	1,297.5	1,299.6	1,299.5	2.9	2.8	-176.23	0.0	-14.9	57.7	52.2	5.47	10.538			
1,400.0	1,396.3	1,400.2	1,399.9	3.2	3.0	-178.14	-0.1	-8.7	67.4	61.5	5.90	11.411			
1,500.0	1,495.1	1,501.1	1,500.4	3.5	3.2	-179.90	-0.1	-0.8	75.4	69.1	6.35	11.887			
1,600.0	1,593.8	1,602.2	1,601.1	3.8	3.4	178.32	-0.1	8.9	81.9	75.1	6.80	12.042			
1,700.0	1,692.6	1,703.4	1,701.7	4.1	3.7	176.44	-0.1	20.4	86.7	79.5	7.27	11.937			
1,800.0	1,791.4	1,804.8	1,802.2	4.5	4.0	174.36	-0.2	33.7	90.0	82.2	7.74	11.620			
1,900.0	1,890.1	1,906.2	1,902.5	4.8	4.3	172.01	-0.2	48.8	91.7	83.5	8.24	11.130			
2,000.0	1,988.9	2,006.6	2,001.5	5.2	4.6	169.41	-0.3	65.1	92.4	83.6	8.76	10.549			
2,100.0	2,087.7	2,106.5	2,100.1	5.5	4.9	166.85	-0.3	81.4	93.2	83.9	9.29	10.024			
2,200.0	2,186.5	2,206.4	2,198.7	5.9	5.2	164.33	-0.4	97.6	94.1	84.3	9.85	9.554			
2,300.0	2,285.2	2,306.3	2,297.2	6.2	5.6	161.87	-0.4	113.9	95.3	84.8	10.43	9.133			
2,400.0	2,384.0	2,406.2	2,395.8	6.6	5.9	159.47	-0.5	130.2	96.6	85.5	11.03	8.755			
2,500.0	2,482.8	2,506.2	2,494.4	6.9	6.3	157.14	-0.5	146.4	98.0	86.4	11.65	8.414			
2,600.0	2,581.5	2,606.1	2,593.0	7.3	6.6	154.88	-0.6	162.7	99.7	87.4	12.29	8.108			
2,700.0	2,680.3	2,706.0	2,691.5	7.7	7.0	152.70	-0.6	179.0	101.5	88.5	12.96	7.832			
2,800.0	2,779.1	2,805.9	2,790.1	8.0	7.3	150.59	-0.7	195.2	103.4	89.8	13.63	7.583			
2,900.0	2,877.8	2,905.8	2,888.7	8.4	7.7	148.57	-0.7	211.5	105.5	91.1	14.33	7.360			
3,000.0	2,976.6	3,005.7	2,987.3	8.8	8.0	146.62	-0.8	227.8	107.6	92.6	15.04	7.158			
3,100.0	3,075.4	3,105.6	3,085.8	9.1	8.4	144.76	-0.8	244.1	109.9	94.2	15.76	6.977			
3,200.0	3,174.1	3,205.5	3,184.4	9.5	8.8	142.97	-0.9	260.3	112.4	95.9	16.49	6.813			
3,300.0	3,272.9	3,305.4	3,283.0	9.8	9.1	141.26	-0.9	276.6	114.9	97.6	17.23	6.666			
3,400.0	3,371.7	3,405.3	3,381.6	10.2	9.5	139.62	-1.0	292.9	117.5	99.5	17.98	6.534			
3,500.0	3,470.4	3,505.3	3,480.2	10.6	9.9	138.06	-1.0	309.1	120.2	101.5	18.74	6.414			
3,600.0	3,569.2	3,605.2	3,578.7	10.9	10.2	136.57	-1.1	325.4	123.0	103.5	19.51	6.307			
3,700.0	3,668.0	3,705.1	3,677.3	11.3	10.6	135.14	-1.1	341.7	125.9	105.6	20.27	6.210			
3,800.0	3,766.7	3,805.0	3,775.9	11.7	11.0	133.78	-1.1	357.9	128.8	107.8	21.05	6.122			
3,900.0	3,865.5	3,904.9	3,874.5	12.0	11.4	132.48	-1.2	374.2	131.9	110.0	21.82	6.043			
4,000.0	3,964.3	4,004.8	3,973.0	12.4	11.7	131.24	-1.2	390.5	135.0	112.4	22.60	5.971			
4,100.0	4,063.0	4,104.7	4,071.6	12.8	12.1	130.05	-1.3	406.8	138.1	114.7	23.38	5.907			
4,200.0	4,161.8	4,204.6	4,170.2	13.1	12.5	128.92	-1.3	423.0	141.3	117.1	24.16	5.848			
4,300.0	4,260.6	4,304.5	4,268.8	13.5	12.9	127.84	-1.4	439.3	144.6	119.6	24.94	5.795			
4,400.0	4,359.4	4,404.5	4,367.3	13.9	13.2	126.81	-1.4	455.6	147.9	122.1	25.73	5.747			
4,500.0	4,458.1	4,504.4	4,465.9	14.2	13.6	125.82	-1.5	471.8	151.2	124.7	26.51	5.704			
4,600.0	4,556.9	4,604.3	4,564.5	14.6	14.0	124.87	-1.5	488.1	154.6	127.3	27.29	5.664			
4,700.0	4,655.7	4,704.2	4,663.1	15.0	14.4	123.97	-1.6	504.4	158.0	130.0	28.08	5.628			
4,800.0	4,754.4	4,804.1	4,761.7	15.4	14.7	123.10	-1.6	520.6	161.5	132.6	28.86	5.596			
4,900.0	4,853.2	4,904.0	4,860.2	15.7	15.1	122.28	-1.7	536.9	165.0	135.4	29.65	5.566			
5,000.0	4,952.0	5,003.9	4,958.8	16.1	15.5	121.48	-1.7	553.2	168.6	138.1	30.43	5.540			

CC - Min centre to center distance or convergent point, SF - min separation factor, ES - min ellipse separation

Company:	Synergy Resources	Local Co-ordinate Reference:	Well SRC Eberle P-32NHZ
Project:	SEC.32-T1N-R66W	TVD Reference:	WELL @ 5045.0ft (Ensign Rig #134 - RKB - 13')
Reference Site:	SRC Eberle 14-32-31CHZM Pad Sec.32-T1N-R66W	MD Reference:	WELL @ 5045.0ft (Ensign Rig #134 - RKB - 13')
Site Error:	0.0ft	North Reference:	True
Reference Well:	SRC Eberle P-32NHZ	Survey Calculation Method:	Minimum Curvature
Well Error:	0.0ft	Output errors are at	2.00 sigma
Reference Wellbore	Wellbore #1	Database:	landmark
Reference Design:	Plan #2 (3-14-14)	Offset TVD Reference:	Offset Datum

Offset Design													Offset Site Error:	0.0ft
Survey Program: 0-MWD													Offset Well Error:	0.0ft
Reference		Offset		Semi Major Axis			Distance							Warning
Measured Depth (ft)	Vertical Depth (ft)	Measured Depth (ft)	Vertical Depth (ft)	Reference (ft)	Offset (ft)	Highside Toolface (°)	Offset Wellbore Centre +N/-S (ft)	+E/-W (ft)	Between Centres (ft)	Between Ellipses (ft)	Minimum Separation (ft)	Separation Factor		
5,100.0	5,050.7	5,103.8	5,057.4	16.5	15.9	120.72	-1.8	569.5	172.1	140.9	31.21	5.515		
5,200.0	5,149.5	5,203.7	5,156.0	16.8	16.2	119.99	-1.8	585.7	175.7	143.7	31.99	5.493		
5,300.0	5,248.3	5,303.6	5,254.5	17.2	16.6	119.29	-1.9	602.0	179.4	146.6	32.77	5.473		
5,400.0	5,347.0	5,403.6	5,353.1	17.6	17.0	118.62	-1.9	618.3	183.0	149.5	33.55	5.455		
5,500.0	5,445.8	5,503.5	5,451.7	17.9	17.4	117.97	-2.0	634.5	186.7	152.4	34.33	5.438		
5,600.0	5,544.6	5,603.4	5,550.3	18.3	17.8	117.35	-2.0	650.8	190.4	155.3	35.11	5.423		
5,700.0	5,643.3	5,703.3	5,648.8	18.7	18.1	116.75	-2.1	667.1	194.1	158.2	35.89	5.409		
5,800.0	5,742.1	5,803.2	5,747.4	19.0	18.5	116.18	-2.1	683.3	197.9	161.2	36.66	5.397		
5,900.0	5,840.9	5,903.1	5,846.0	19.4	18.9	115.62	-2.2	699.6	201.6	164.2	37.44	5.385		
6,000.0	5,939.6	6,003.0	5,944.6	19.8	19.3	115.09	-2.2	715.9	205.4	167.2	38.21	5.375		
6,100.0	6,038.4	6,102.9	6,043.2	20.2	19.7	114.57	-2.3	732.2	209.2	170.2	38.99	5.366		
6,200.0	6,137.2	6,202.8	6,141.7	20.5	20.0	114.08	-2.3	748.4	213.0	173.2	39.76	5.357		
6,300.0	6,236.1	6,302.7	6,240.3	20.8	20.4	113.34	-2.4	764.7	216.3	175.8	40.51	5.340		
6,400.0	6,335.5	6,402.5	6,338.7	21.1	20.8	111.79	-2.4	780.9	218.4	177.2	41.23	5.297		
6,500.0	6,435.2	6,501.4	6,436.6	21.3	21.1	109.90	-2.4	795.2	219.6	177.8	41.81	5.251		
6,600.0	6,535.2	6,600.6	6,535.2	21.4	21.3	108.06	-2.5	806.0	220.1	177.8	42.31	5.203		
6,700.0	6,635.2	6,700.1	6,634.4	21.6	21.5	-178.57	-2.5	813.5	220.1	188.4	31.62	6.959		
6,800.0	6,735.2	6,800.0	6,734.2	21.7	21.6	-179.62	-2.5	817.6	220.0	188.1	31.93	6.891		
6,849.4	6,784.5	6,849.3	6,783.5	21.8	21.7	-90.11	-2.5	818.3	220.0	176.8	43.21	5.092		
6,900.0	6,835.0	6,899.8	6,834.0	21.8	21.8	-90.69	-2.5	818.3	220.0	176.7	43.35	5.076		
7,000.0	6,933.6	6,998.6	6,932.8	21.8	21.9	-94.86	-2.5	818.3	220.9	177.3	43.53	5.074		
7,100.0	7,028.8	7,100.3	7,034.1	21.6	22.0	-100.44	-2.5	810.1	223.9	180.6	43.31	5.170		
7,200.0	7,119.0	7,205.7	7,136.7	21.4	21.9	-105.74	-2.5	786.6	229.0	186.4	42.62	5.373		
7,300.0	7,202.3	7,314.7	7,238.1	21.2	21.7	-110.60	-2.5	746.6	235.7	194.1	41.52	5.676		
7,400.0	7,277.0	7,427.7	7,335.5	21.0	21.4	-114.89	-2.5	689.6	243.3	203.1	40.18	6.055		
7,500.0	7,341.9	7,544.6	7,425.5	20.9	21.2	-118.54	-2.5	615.2	251.2	212.4	38.84	6.468		
7,600.0	7,395.5	7,665.2	7,504.4	21.0	21.1	-121.50	-2.5	524.2	258.7	220.9	37.81	6.842		
7,700.0	7,436.9	7,789.1	7,568.4	21.3	21.4	-123.75	-2.5	418.3	265.0	227.6	37.41	7.085		
7,800.0	7,465.2	7,915.7	7,614.0	22.0	22.0	-125.27	-2.5	300.4	269.7	231.8	37.90	7.116		
7,900.0	7,479.8	8,043.9	7,638.3	23.0	23.1	-126.07	-2.5	174.6	272.2	232.8	39.38	6.913		
8,000.0	7,482.0	8,160.3	7,642.0	24.2	24.5	-126.19	-2.5	58.5	272.6	231.1	41.58	6.557		
8,100.0	7,482.0	8,260.3	7,642.0	25.6	26.0	-126.19	-2.5	-41.5	272.6	228.6	43.99	6.198		
8,200.0	7,482.0	8,360.3	7,642.0	27.3	27.6	-126.19	-2.5	-141.5	272.6	225.9	46.72	5.836		
8,300.0	7,482.0	8,460.3	7,642.0	29.2	29.5	-126.19	-2.5	-241.5	272.6	222.9	49.73	5.482		
8,400.0	7,482.0	8,560.3	7,642.0	31.2	31.4	-126.19	-2.5	-341.5	272.6	219.7	52.97	5.147		
8,500.0	7,482.0	8,660.3	7,642.0	33.3	33.5	-126.19	-2.5	-441.5	272.6	216.2	56.41	4.833		
8,600.0	7,482.0	8,760.3	7,642.0	35.5	35.7	-126.19	-2.5	-541.5	272.6	212.6	60.00	4.544		
8,700.0	7,482.0	8,860.3	7,642.0	37.8	38.0	-126.19	-2.5	-641.5	272.6	208.9	63.73	4.278		
8,800.0	7,482.0	8,960.3	7,642.0	40.1	40.3	-126.19	-2.5	-741.5	272.6	205.1	67.56	4.035		
8,900.0	7,482.0	9,060.3	7,642.0	42.6	42.7	-126.19	-2.5	-841.5	272.6	201.1	71.49	3.814		
9,000.0	7,482.0	9,160.3	7,642.0	45.0	45.2	-126.19	-2.5	-941.5	272.6	197.1	75.50	3.611		
9,100.0	7,482.0	9,260.3	7,642.0	47.5	47.6	-126.19	-2.5	-1,041.5	272.6	193.1	79.57	3.427		
9,200.0	7,482.0	9,360.3	7,642.0	50.0	50.2	-126.19	-2.5	-1,141.5	272.6	188.9	83.70	3.258		
9,300.0	7,482.0	9,460.3	7,642.0	52.6	52.7	-126.19	-2.5	-1,241.5	272.6	184.8	87.87	3.103		
9,400.0	7,482.0	9,560.3	7,642.0	55.2	55.3	-126.19	-2.5	-1,341.5	272.6	180.5	92.09	2.961		
9,500.0	7,482.0	9,660.3	7,642.0	57.8	57.9	-126.19	-2.5	-1,441.5	272.6	176.3	96.34	2.830		
9,600.0	7,482.0	9,760.3	7,642.0	60.4	60.5	-126.19	-2.5	-1,541.5	272.6	172.0	100.63	2.709		
9,700.0	7,482.0	9,860.3	7,642.0	63.0	63.1	-126.19	-2.5	-1,641.5	272.6	167.7	104.95	2.598		
9,800.0	7,482.0	9,960.3	7,642.0	65.7	65.7	-126.19	-2.5	-1,741.5	272.6	163.4	109.28	2.495		
9,900.0	7,482.0	10,060.3	7,642.0	68.3	68.4	-126.19	-2.5	-1,841.5	272.6	159.0	113.65	2.399		

CC - Min centre to center distance or convergent point, SF - min separation factor, ES - min ellipse separation

Company:	Synergy Resources	Local Co-ordinate Reference:	Well SRC Eberle P-32NHZ
Project:	SEC.32-T1N-R66W	TVD Reference:	WELL @ 5045.0ft (Ensign Rig #134 - RKB - 13')
Reference Site:	SRC Eberle 14-32-31CHZM Pad Sec.32-T1N-R66W	MD Reference:	WELL @ 5045.0ft (Ensign Rig #134 - RKB - 13')
Site Error:	0.0ft	North Reference:	True
Reference Well:	SRC Eberle P-32NHZ	Survey Calculation Method:	Minimum Curvature
Well Error:	0.0ft	Output errors are at	2.00 sigma
Reference Wellbore	Wellbore #1	Database:	landmark
Reference Design:	Plan #2 (3-14-14)	Offset TVD Reference:	Offset Datum

Offset Design													Offset Site Error:	0.0 ft
Survey Program: 0-MWD													Offset Well Error:	0.0 ft
Reference		Offset		Semi Major Axis			Distance							
Measured Depth (ft)	Vertical Depth (ft)	Measured Depth (ft)	Vertical Depth (ft)	Reference (ft)	Offset (ft)	Highside Toolface (°)	Offset Wellbore Centre +N/-S (ft)	+E/-W (ft)	Between Centres (ft)	Between Ellipses (ft)	Minimum Separation (ft)	Separation Factor	Warning	
10,000.0	7,482.0	10,160.3	7,642.0	71.0	71.1	-126.19	-2.5	-1,941.5	272.6	154.6	118.03	2.310		
10,100.0	7,482.0	10,260.3	7,642.0	73.7	73.7	-126.19	-2.5	-2,041.5	272.6	150.2	122.42	2.227		
10,200.0	7,482.0	10,360.3	7,642.0	76.4	76.4	-126.19	-2.5	-2,141.5	272.6	145.8	126.84	2.150		
10,300.0	7,482.0	10,460.3	7,642.0	79.1	79.1	-126.19	-2.5	-2,241.5	272.6	141.4	131.26	2.077		
10,400.0	7,482.0	10,560.3	7,642.0	81.8	81.8	-126.19	-2.5	-2,341.5	272.6	136.9	135.70	2.009		
10,500.0	7,482.0	10,660.3	7,642.0	84.5	84.5	-126.19	-2.5	-2,441.5	272.6	132.5	140.15	1.945		
10,600.0	7,482.0	10,760.3	7,642.0	87.2	87.2	-126.19	-2.5	-2,541.5	272.6	128.0	144.61	1.885		
10,700.0	7,482.0	10,860.3	7,642.0	89.9	90.0	-126.19	-2.5	-2,641.5	272.6	123.6	149.08	1.829		
10,800.0	7,482.0	10,960.3	7,642.0	92.7	92.7	-126.19	-2.5	-2,741.5	272.6	119.1	153.56	1.775		
10,900.0	7,482.0	11,060.3	7,642.0	95.4	95.4	-126.19	-2.5	-2,841.5	272.6	114.6	158.05	1.725		
11,000.0	7,482.0	11,160.3	7,642.0	98.1	98.2	-126.19	-2.5	-2,941.5	272.6	110.1	162.54	1.677		
11,100.0	7,482.0	11,260.3	7,642.0	100.9	100.9	-126.19	-2.6	-3,041.5	272.6	105.6	167.04	1.632		
11,200.0	7,482.0	11,360.3	7,642.0	103.6	103.6	-126.19	-2.6	-3,141.5	272.6	101.1	171.55	1.589		
11,300.0	7,482.0	11,460.3	7,642.0	106.4	106.4	-126.19	-2.6	-3,241.5	272.6	96.6	176.06	1.549		
11,400.0	7,482.0	11,560.3	7,642.0	109.1	109.1	-126.19	-2.6	-3,341.5	272.6	92.1	180.58	1.510		
11,500.0	7,482.0	11,660.3	7,642.0	111.9	111.9	-126.19	-2.6	-3,441.5	272.6	87.5	185.10	1.473	Level 3	
11,600.0	7,482.0	11,760.3	7,642.0	114.6	114.6	-126.19	-2.6	-3,541.5	272.6	83.0	189.63	1.438	Level 3	
11,700.0	7,482.0	11,860.3	7,642.0	117.4	117.4	-126.19	-2.6	-3,641.5	272.6	78.5	194.16	1.404	Level 3	
11,800.0	7,482.0	11,960.3	7,642.0	120.1	120.1	-126.19	-2.6	-3,741.5	272.6	74.0	198.69	1.372	Level 3	
11,900.0	7,482.0	12,060.3	7,642.0	122.9	122.9	-126.19	-2.6	-3,841.5	272.6	69.4	203.23	1.342	Level 3	
12,000.0	7,482.0	12,160.3	7,642.0	125.6	125.7	-126.19	-2.6	-3,941.5	272.6	64.9	207.77	1.312	Level 3	
12,002.3	7,482.0	12,162.6	7,642.0	125.7	125.7	-126.19	-2.6	-3,943.9	272.6	64.8	207.88	1.312	Level 3, SF	

Company:	Synergy Resources	Local Co-ordinate Reference:	Well SRC Eberle P-32NHZ
Project:	SEC.32-T1N-R66W	TVD Reference:	WELL @ 5045.0ft (Ensign Rig #134 - RKB - 13')
Reference Site:	SRC Eberle 14-32-31CHZM Pad Sec.32-T1N-R66W	MD Reference:	WELL @ 5045.0ft (Ensign Rig #134 - RKB - 13')
Site Error:	0.0ft	North Reference:	True
Reference Well:	SRC Eberle P-32NHZ	Survey Calculation Method:	Minimum Curvature
Well Error:	0.0ft	Output errors are at	2.00 sigma
Reference Wellbore	Wellbore #1	Database:	landmark
Reference Design:	Plan #2 (3-14-14)	Offset TVD Reference:	Offset Datum

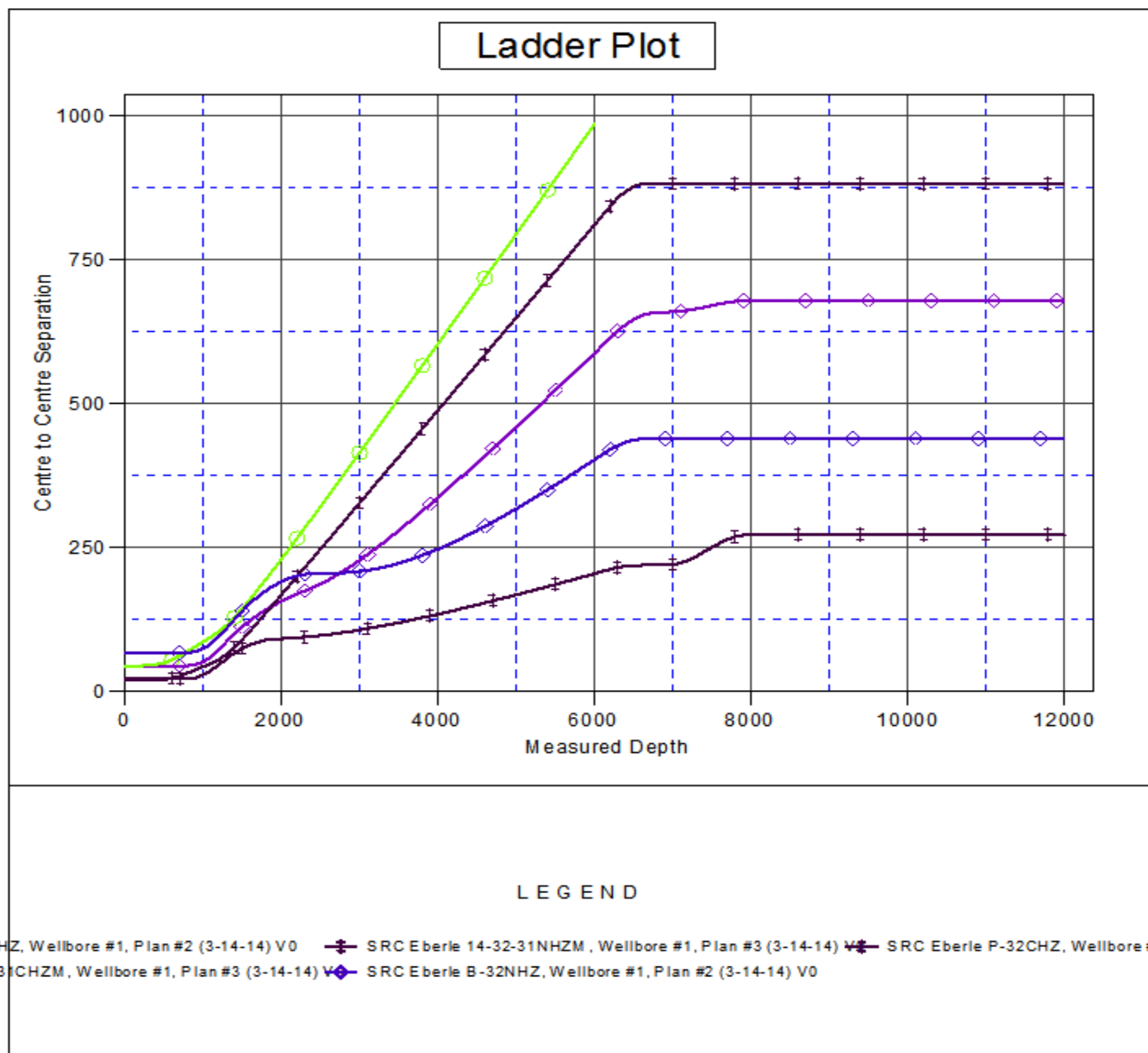
Reference Depths are relative to WELL @ 5045.0ft (Ensign Rig #134 - Coordinates are relative to: SRC Eberle P-32NHZ

Offset Depths are relative to Offset Datum

Central Meridian is -105.500000 °

Coordinate System is US State Plane 1983, Colorado Northern Zone

Grid Convergence at Surface is: 0.46°



Company:	Synergy Resources	Local Co-ordinate Reference:	Well SRC Eberle P-32NHZ
Project:	SEC.32-T1N-R66W	TVD Reference:	WELL @ 5045.0ft (Ensign Rig #134 - RKB - 13')
Reference Site:	SRC Eberle 14-32-31CHZM Pad Sec.32-T1N-R66W	MD Reference:	WELL @ 5045.0ft (Ensign Rig #134 - RKB - 13')
Site Error:	0.0ft	North Reference:	True
Reference Well:	SRC Eberle P-32NHZ	Survey Calculation Method:	Minimum Curvature
Well Error:	0.0ft	Output errors are at	2.00 sigma
Reference Wellbore	Wellbore #1	Database:	landmark
Reference Design:	Plan #2 (3-14-14)	Offset TVD Reference:	Offset Datum

Reference Depths are relative to WELL @ 5045.0ft (Ensign Rig #134 - Coordinates are relative to: SRC Eberle P-32NHZ

Offset Depths are relative to Offset Datum

Central Meridian is -105.500000 °

Coordinate System is US State Plane 1983, Colorado Northern Zone

Grid Convergence at Surface is: 0.46°

