

Synergy Resources

Well Name: **SRC Eberle 14-32-31CHZM**

Surface Location: SRC Eberle 14-32-31CHZM Pad Sec.32-T1N-R66W
North American Datum 1983 , US State Plane 1983 , Colorado Northern Zone

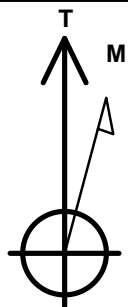
Ground Elevation: 5034.0

+N/-S	+E/-W	Northing	Easting	Latitude	Longitude	Slot
0.0	0.0	1245146.31	3197647.68	40.004154	-104.794452	

Ensign Rig #134 - RKB - 13' WELL @ 5047.0ft (Ensign Rig #134 - RKB - 13')

WELLBORE TARGET DETAILS

Name	TVD	+N/-S	+E/-W	Shape Point
SHL 1355'FSL & 823'FEL, Sec.32	1.0	0.0	0.0	Point
BHL 475'FSL & 2195'FEL, Sec.31	7642.0	-885.0	-6659.0	Point



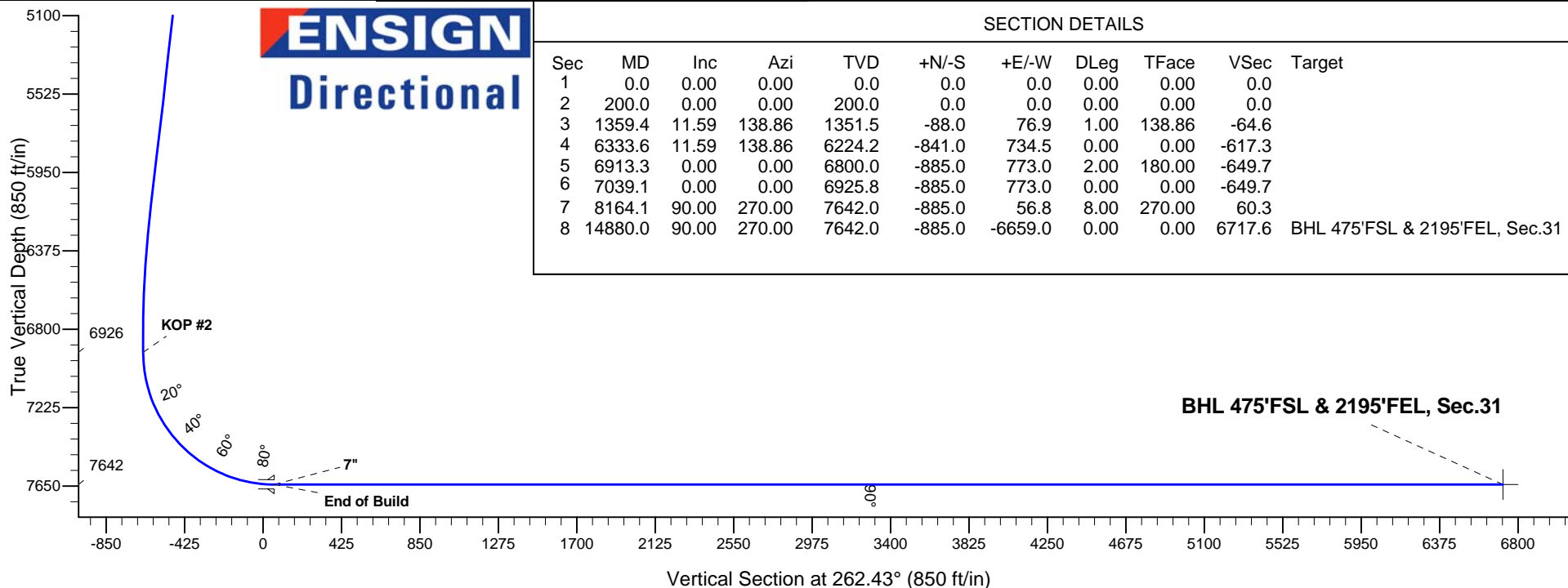
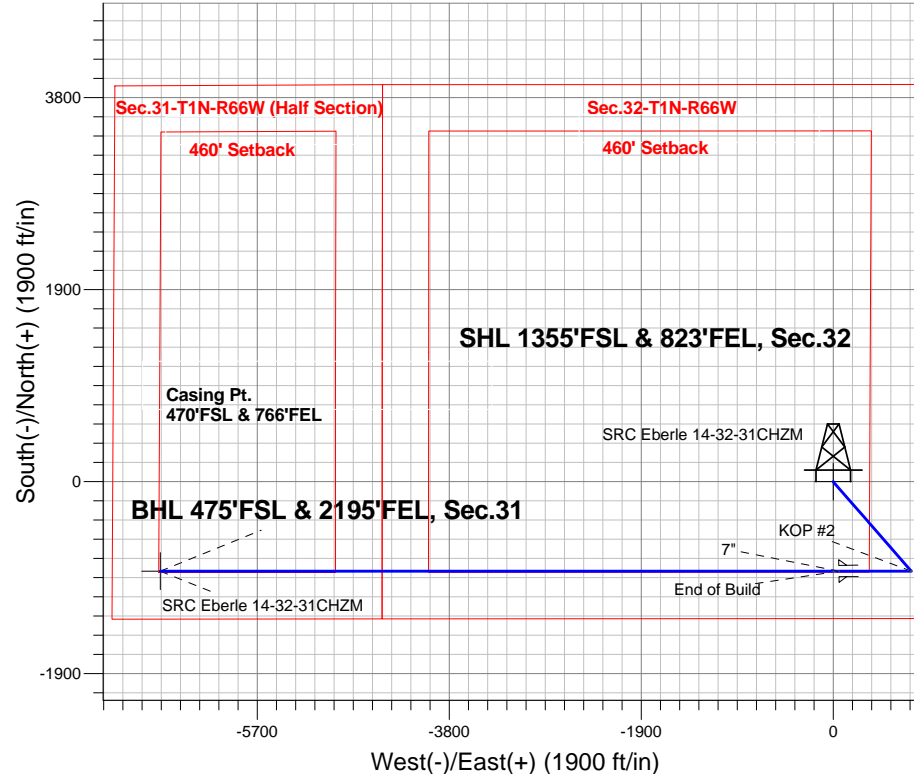
Azimuths to True North
Magnetic North: 8.48°

Magnetic Field
Strength: 52629.1snT
Dip Angle: 66.63°
Date: 3/14/2014
Model: IGRF2010

SRC Eberle 14-32-31CHZM Pad Sec.32-T1N-R66W
SRC Eberle 14-32-31CHZM
Plan #3 (3-14-14)
11:20, March 17 2014

ANNOTATIONS

TVD	MD	Annotation
200.0	200.0	KOP #1
6925.8	7039.1	KOP #2
7642.0	8164.1	End of Build





Synergy Resources

SEC.32-T1N-R66W

SRC Eberle 14-32-31CHZM Pad Sec.32-T1N-R66W

SRC Eberle 14-32-31CHZM

Wellbore #1

Plan: Plan #3 (3-14-14)

Standard Planning Report

17 March, 2014

Database:	landmark	Local Co-ordinate Reference:	Well SRC Eberle 14-32-31CHZM
Company:	Synergy Resources	TVD Reference:	WELL @ 5047.0ft (Ensign Rig #134 - RKB - 13')
Project:	SEC.32-T1N-R66W	MD Reference:	WELL @ 5047.0ft (Ensign Rig #134 - RKB - 13')
Site:	SRC Eberle 14-32-31CHZM Pad Sec.32-T1N-R66W	North Reference:	True
Well:	SRC Eberle 14-32-31CHZM	Survey Calculation Method:	Minimum Curvature
Wellbore:	Wellbore #1		
Design:	Plan #3 (3-14-14)		

Project	SEC.32-T1N-R66W, Weld County, Colorado		
Map System:	US State Plane 1983	System Datum:	Mean Sea Level
Geo Datum:	North American Datum 1983		Using Well Reference Point
Map Zone:	Colorado Northern Zone		Using geodetic scale factor

Site						SRC Eberle 14-32-31CHZM Pad Sec.32-T1N-R66W											
Site Position:						Northing:			1,245,145.79ft			Latitude:			40.004155		
From:			Lat/Long			Easting:			3,197,534.23ft			Longitude:			-104.794857		
Position Uncertainty:			0.0 ft			Slot Radius:			"			Grid Convergence:			0.46 °		

Well	SRC Eberle 14-32-31CHZM					
Well Position	+N-S	-0.4 ft	Northing:	1,245,146.31 ft	Latitude:	40.004154
	+E-W	113.5 ft	Easting:	3,197,647.68 ft	Longitude:	-104.794452
Position Uncertainty		0.0 ft	Wellhead Elevation:	ft	Ground Level:	5,034.0 ft

Wellbore	Wellbore #1				
Magnetics	Model Name	Sample Date	Declination (°)	Dip Angle (°)	Field Strength (nT)
	IGRF2010	3/14/2014	8.48	66.63	52,629

Design	Plan #3 (3-14-14)			
Audit Notes:				
Version:	Phase:	PROTOTYPE	Tie On Depth:	0.0
Vertical Section:	Depth From (TVD)	+N/-S (ft)	+E/-W (ft)	Direction (°)
	0.0	0.0	0.0	262.43

Plan Sections										
Measured Depth (ft)	Inclination (°)	Azimuth (°)	Vertical Depth (ft)	+N/-S (ft)	+E/-W (ft)	Dogleg Rate (°/100ft)	Build Rate (°/100ft)	Turn Rate (°/100ft)	TFO (°)	Target
0.0	0.00	0.00	0.0	0.0	0.0	0.00	0.00	0.00	0.00	
200.0	0.00	0.00	200.0	0.0	0.0	0.00	0.00	0.00	0.00	
1,359.4	11.59	138.86	1,351.5	-88.0	76.9	1.00	1.00	0.00	138.86	
6,333.6	11.59	138.86	6,224.2	-841.0	734.5	0.00	0.00	0.00	0.00	
6,913.3	0.00	0.00	6,800.0	-885.0	773.0	2.00	-2.00	0.00	180.00	
7,039.1	0.00	0.00	6,925.8	-885.0	773.0	0.00	0.00	0.00	0.00	
8,164.1	90.00	270.00	7,642.0	-885.0	56.8	8.00	8.00	0.00	270.00	
14,880.0	90.00	270.00	7,642.0	-885.0	-6,659.0	0.00	0.00	0.00	0.00	BHL 475'FSL & 219°

Database:	landmark	Local Co-ordinate Reference:	Well SRC Eberle 14-32-31CHZM
Company:	Synergy Resources	TVD Reference:	WELL @ 5047.0ft (Ensign Rig #134 - RKB - 13')
Project:	SEC.32-T1N-R66W	MD Reference:	WELL @ 5047.0ft (Ensign Rig #134 - RKB - 13')
Site:	SRC Eberle 14-32-31CHZM Pad Sec.32-T1N-R66W	North Reference:	True
Well:	SRC Eberle 14-32-31CHZM	Survey Calculation Method:	Minimum Curvature
Wellbore:	Wellbore #1		
Design:	Plan #3 (3-14-14)		

Planned Survey									
Measured Depth (ft)	Inclination (°)	Azimuth (°)	Vertical Depth (ft)	+N/-S (ft)	+E/-W (ft)	Vertical Section (ft)	Dogleg Rate (°/100ft)	Build Rate (°/100ft)	Turn Rate (°/100ft)
0.0	0.00	0.00	0.0	0.0	0.0	0.0	0.00	0.00	0.00
1.0	0.00	0.00	1.0	0.0	0.0	0.0	0.00	0.00	0.00
SHL 1355'FSL & 823'FEL, Sec.32									
100.0	0.00	0.00	100.0	0.0	0.0	0.0	0.00	0.00	0.00
200.0	0.00	0.00	200.0	0.0	0.0	0.0	0.00	0.00	0.00
KOP #1									
300.0	1.00	138.86	300.0	-0.7	0.6	-0.5	1.00	1.00	0.00
400.0	2.00	138.86	400.0	-2.6	2.3	-1.9	1.00	1.00	0.00
500.0	3.00	138.86	499.9	-5.9	5.2	-4.3	1.00	1.00	0.00
600.0	4.00	138.86	599.7	-10.5	9.2	-7.7	1.00	1.00	0.00
700.0	5.00	138.86	699.4	-16.4	14.3	-12.1	1.00	1.00	0.00
800.0	6.00	138.86	798.9	-23.6	20.6	-17.4	1.00	1.00	0.00
900.0	7.00	138.86	898.3	-32.2	28.1	-23.6	1.00	1.00	0.00
1,000.0	8.00	138.86	997.4	-42.0	36.7	-30.8	1.00	1.00	0.00
1,100.0	9.00	138.86	1,096.3	-53.1	46.4	-39.0	1.00	1.00	0.00
1,200.0	10.00	138.86	1,194.9	-65.6	57.3	-48.1	1.00	1.00	0.00
1,300.0	11.00	138.86	1,293.3	-79.3	69.2	-58.2	1.00	1.00	0.00
1,359.4	11.59	138.86	1,351.5	-88.0	76.9	-64.6	1.00	1.00	0.00
1,400.0	11.59	138.86	1,391.3	-94.2	82.3	-69.1	0.00	0.00	0.00
1,500.0	11.59	138.86	1,489.2	-109.3	95.5	-80.3	0.00	0.00	0.00
1,600.0	11.59	138.86	1,587.2	-124.5	108.7	-91.4	0.00	0.00	0.00
1,700.0	11.59	138.86	1,685.2	-139.6	121.9	-102.5	0.00	0.00	0.00
1,800.0	11.59	138.86	1,783.1	-154.7	135.2	-113.6	0.00	0.00	0.00
1,900.0	11.59	138.86	1,881.1	-169.9	148.4	-124.7	0.00	0.00	0.00
2,000.0	11.59	138.86	1,979.0	-185.0	161.6	-135.8	0.00	0.00	0.00
2,100.0	11.59	138.86	2,077.0	-200.1	174.8	-146.9	0.00	0.00	0.00
2,200.0	11.59	138.86	2,175.0	-215.3	188.0	-158.0	0.00	0.00	0.00
2,300.0	11.59	138.86	2,272.9	-230.4	201.3	-169.1	0.00	0.00	0.00
2,400.0	11.59	138.86	2,370.9	-245.6	214.5	-180.3	0.00	0.00	0.00
2,500.0	11.59	138.86	2,468.8	-260.7	227.7	-191.4	0.00	0.00	0.00
2,600.0	11.59	138.86	2,566.8	-275.8	240.9	-202.5	0.00	0.00	0.00
2,700.0	11.59	138.86	2,664.8	-291.0	254.1	-213.6	0.00	0.00	0.00
2,800.0	11.59	138.86	2,762.7	-306.1	267.4	-224.7	0.00	0.00	0.00
2,900.0	11.59	138.86	2,860.7	-321.2	280.6	-235.8	0.00	0.00	0.00
3,000.0	11.59	138.86	2,958.6	-336.4	293.8	-246.9	0.00	0.00	0.00
3,100.0	11.59	138.86	3,056.6	-351.5	307.0	-258.0	0.00	0.00	0.00
3,200.0	11.59	138.86	3,154.5	-366.7	320.3	-269.2	0.00	0.00	0.00
3,300.0	11.59	138.86	3,252.5	-381.8	333.5	-280.3	0.00	0.00	0.00
3,400.0	11.59	138.86	3,350.5	-396.9	346.7	-291.4	0.00	0.00	0.00
3,500.0	11.59	138.86	3,448.4	-412.1	359.9	-302.5	0.00	0.00	0.00
3,600.0	11.59	138.86	3,546.4	-427.2	373.1	-313.6	0.00	0.00	0.00
3,700.0	11.59	138.86	3,644.3	-442.3	386.4	-324.7	0.00	0.00	0.00
3,800.0	11.59	138.86	3,742.3	-457.5	399.6	-335.8	0.00	0.00	0.00
3,900.0	11.59	138.86	3,840.3	-472.6	412.8	-346.9	0.00	0.00	0.00
4,000.0	11.59	138.86	3,938.2	-487.7	426.0	-358.0	0.00	0.00	0.00
4,100.0	11.59	138.86	4,036.2	-502.9	439.2	-369.2	0.00	0.00	0.00
4,200.0	11.59	138.86	4,134.1	-518.0	452.5	-380.3	0.00	0.00	0.00
4,300.0	11.59	138.86	4,232.1	-533.2	465.7	-391.4	0.00	0.00	0.00
4,400.0	11.59	138.86	4,330.1	-548.3	478.9	-402.5	0.00	0.00	0.00
4,500.0	11.59	138.86	4,428.0	-563.4	492.1	-413.6	0.00	0.00	0.00
4,600.0	11.59	138.86	4,526.0	-578.6	505.3	-424.7	0.00	0.00	0.00

Database:	landmark	Local Co-ordinate Reference:	Well SRC Eberle 14-32-31CHZM
Company:	Synergy Resources	TVD Reference:	WELL @ 5047.0ft (Ensign Rig #134 - RKB - 13')
Project:	SEC.32-T1N-R66W	MD Reference:	WELL @ 5047.0ft (Ensign Rig #134 - RKB - 13')
Site:	SRC Eberle 14-32-31CHZM Pad Sec.32-T1N-R66W	North Reference:	True
Well:	SRC Eberle 14-32-31CHZM	Survey Calculation Method:	Minimum Curvature
Wellbore:	Wellbore #1		
Design:	Plan #3 (3-14-14)		

Planned Survey									
Measured Depth (ft)	Inclination (°)	Azimuth (°)	Vertical Depth (ft)	+N/-S (ft)	+E/-W (ft)	Vertical Section (ft)	Dogleg Rate (°/100ft)	Build Rate (°/100ft)	Turn Rate (°/100ft)
4,700.0	11.59	138.86	4,623.9	-593.7	518.6	-435.8	0.00	0.00	0.00
4,800.0	11.59	138.86	4,721.9	-608.8	531.8	-446.9	0.00	0.00	0.00
4,900.0	11.59	138.86	4,819.9	-624.0	545.0	-458.0	0.00	0.00	0.00
5,000.0	11.59	138.86	4,917.8	-639.1	558.2	-469.2	0.00	0.00	0.00
5,100.0	11.59	138.86	5,015.8	-654.2	571.4	-480.3	0.00	0.00	0.00
5,200.0	11.59	138.86	5,113.7	-669.4	584.7	-491.4	0.00	0.00	0.00
5,300.0	11.59	138.86	5,211.7	-684.5	597.9	-502.5	0.00	0.00	0.00
5,400.0	11.59	138.86	5,309.7	-699.7	611.1	-513.6	0.00	0.00	0.00
5,500.0	11.59	138.86	5,407.6	-714.8	624.3	-524.7	0.00	0.00	0.00
5,600.0	11.59	138.86	5,505.6	-729.9	637.6	-535.8	0.00	0.00	0.00
5,700.0	11.59	138.86	5,603.5	-745.1	650.8	-546.9	0.00	0.00	0.00
5,800.0	11.59	138.86	5,701.5	-760.2	664.0	-558.1	0.00	0.00	0.00
5,900.0	11.59	138.86	5,799.5	-775.3	677.2	-569.2	0.00	0.00	0.00
6,000.0	11.59	138.86	5,897.4	-790.5	690.4	-580.3	0.00	0.00	0.00
6,100.0	11.59	138.86	5,995.4	-805.6	703.7	-591.4	0.00	0.00	0.00
6,200.0	11.59	138.86	6,093.3	-820.7	716.9	-602.5	0.00	0.00	0.00
6,300.0	11.59	138.86	6,191.3	-835.9	730.1	-613.6	0.00	0.00	0.00
6,333.6	11.59	138.86	6,224.2	-841.0	734.5	-617.3	0.00	0.00	0.00
6,400.0	10.27	138.86	6,289.4	-850.5	742.8	-624.3	2.00	-2.00	0.00
6,500.0	8.27	138.86	6,388.1	-862.6	753.4	-633.2	2.00	-2.00	0.00
6,600.0	6.27	138.86	6,487.3	-872.1	761.7	-640.2	2.00	-2.00	0.00
6,700.0	4.27	138.86	6,586.9	-879.0	767.8	-645.3	2.00	-2.00	0.00
6,800.0	2.27	138.86	6,686.7	-883.3	771.5	-648.4	2.00	-2.00	0.00
6,900.0	0.27	138.86	6,786.7	-885.0	773.0	-649.6	2.00	-2.00	0.00
6,913.3	0.00	0.00	6,800.0	-885.0	773.0	-649.7	2.00	-2.00	0.00
7,000.0	0.00	0.00	6,886.7	-885.0	773.0	-649.7	0.00	0.00	0.00
7,039.1	0.00	0.00	6,925.8	-885.0	773.0	-649.7	0.00	0.00	0.00
KOP #2									
7,100.0	4.87	270.00	6,986.6	-885.0	770.4	-647.1	7.99	7.99	0.00
7,200.0	12.87	270.00	7,085.3	-885.0	755.0	-631.8	8.00	8.00	0.00
7,300.0	20.87	270.00	7,180.9	-885.0	726.0	-603.1	8.00	8.00	0.00
7,400.0	28.87	270.00	7,271.6	-885.0	684.0	-561.4	8.00	8.00	0.00
7,500.0	36.87	270.00	7,355.5	-885.0	629.8	-507.7	8.00	8.00	0.00
7,600.0	44.87	270.00	7,431.1	-885.0	564.4	-442.9	8.00	8.00	0.00
7,700.0	52.87	270.00	7,496.8	-885.0	489.1	-368.3	8.00	8.00	0.00
7,800.0	60.87	270.00	7,551.4	-885.0	405.5	-285.3	8.00	8.00	0.00
7,900.0	68.87	270.00	7,593.8	-885.0	315.0	-195.7	8.00	8.00	0.00
8,000.0	76.87	270.00	7,623.3	-885.0	219.5	-101.0	8.00	8.00	0.00
8,100.0	84.87	270.00	7,639.1	-885.0	120.9	-3.2	8.00	8.00	0.00
8,164.1	90.00	270.00	7,642.0	-885.0	56.8	60.3	8.00	8.00	0.00
End of Build - 7"									
8,200.0	90.00	270.00	7,642.0	-885.0	20.9	95.8	0.01	0.01	0.00
8,300.0	90.00	270.00	7,642.0	-885.0	-79.1	195.0	0.00	0.00	0.00
8,400.0	90.00	270.00	7,642.0	-885.0	-179.1	294.1	0.00	0.00	0.00
8,500.0	90.00	270.00	7,642.0	-885.0	-279.1	393.2	0.00	0.00	0.00
8,600.0	90.00	270.00	7,642.0	-885.0	-379.1	492.4	0.00	0.00	0.00
8,700.0	90.00	270.00	7,642.0	-885.0	-479.1	591.5	0.00	0.00	0.00
8,800.0	90.00	270.00	7,642.0	-885.0	-579.1	690.6	0.00	0.00	0.00
8,900.0	90.00	270.00	7,642.0	-885.0	-679.1	789.7	0.00	0.00	0.00
9,000.0	90.00	270.00	7,642.0	-885.0	-779.1	888.9	0.00	0.00	0.00
9,100.0	90.00	270.00	7,642.0	-885.0	-879.1	988.0	0.00	0.00	0.00

Database:	landmark	Local Co-ordinate Reference:	Well SRC Eberle 14-32-31CHZM
Company:	Synergy Resources	TVD Reference:	WELL @ 5047.0ft (Ensign Rig #134 - RKB - 13')
Project:	SEC.32-T1N-R66W	MD Reference:	WELL @ 5047.0ft (Ensign Rig #134 - RKB - 13')
Site:	SRC Eberle 14-32-31CHZM Pad Sec.32-T1N-R66W	North Reference:	True
Well:	SRC Eberle 14-32-31CHZM	Survey Calculation Method:	Minimum Curvature
Wellbore:	Wellbore #1		
Design:	Plan #3 (3-14-14)		

Planned Survey									
Measured Depth (ft)	Inclination (°)	Azimuth (°)	Vertical Depth (ft)	+N/-S (ft)	+E/-W (ft)	Vertical Section (ft)	Dogleg Rate (°/100ft)	Build Rate (°/100ft)	Turn Rate (°/100ft)
9,200.0	90.00	270.00	7,642.0	-885.0	-979.1	1,087.1	0.00	0.00	0.00
9,300.0	90.00	270.00	7,642.0	-885.0	-1,079.1	1,186.3	0.00	0.00	0.00
9,400.0	90.00	270.00	7,642.0	-885.0	-1,179.1	1,285.4	0.00	0.00	0.00
9,500.0	90.00	270.00	7,642.0	-885.0	-1,279.1	1,384.5	0.00	0.00	0.00
9,600.0	90.00	270.00	7,642.0	-885.0	-1,379.1	1,483.6	0.00	0.00	0.00
9,700.0	90.00	270.00	7,642.0	-885.0	-1,479.1	1,582.8	0.00	0.00	0.00
9,800.0	90.00	270.00	7,642.0	-885.0	-1,579.1	1,681.9	0.00	0.00	0.00
9,900.0	90.00	270.00	7,642.0	-885.0	-1,679.1	1,781.0	0.00	0.00	0.00
10,000.0	90.00	270.00	7,642.0	-885.0	-1,779.1	1,880.1	0.00	0.00	0.00
10,100.0	90.00	270.00	7,642.0	-885.0	-1,879.1	1,979.3	0.00	0.00	0.00
10,200.0	90.00	270.00	7,642.0	-885.0	-1,979.1	2,078.4	0.00	0.00	0.00
10,300.0	90.00	270.00	7,642.0	-885.0	-2,079.1	2,177.5	0.00	0.00	0.00
10,400.0	90.00	270.00	7,642.0	-885.0	-2,179.1	2,276.7	0.00	0.00	0.00
10,500.0	90.00	270.00	7,642.0	-885.0	-2,279.1	2,375.8	0.00	0.00	0.00
10,600.0	90.00	270.00	7,642.0	-885.0	-2,379.1	2,474.9	0.00	0.00	0.00
10,700.0	90.00	270.00	7,642.0	-885.0	-2,479.1	2,574.0	0.00	0.00	0.00
10,800.0	90.00	270.00	7,642.0	-885.0	-2,579.1	2,673.2	0.00	0.00	0.00
10,900.0	90.00	270.00	7,642.0	-885.0	-2,679.1	2,772.3	0.00	0.00	0.00
11,000.0	90.00	270.00	7,642.0	-885.0	-2,779.1	2,871.4	0.00	0.00	0.00
11,100.0	90.00	270.00	7,642.0	-885.0	-2,879.1	2,970.6	0.00	0.00	0.00
11,200.0	90.00	270.00	7,642.0	-885.0	-2,979.1	3,069.7	0.00	0.00	0.00
11,300.0	90.00	270.00	7,642.0	-885.0	-3,079.1	3,168.8	0.00	0.00	0.00
11,400.0	90.00	270.00	7,642.0	-885.0	-3,179.1	3,267.9	0.00	0.00	0.00
11,500.0	90.00	270.00	7,642.0	-885.0	-3,279.1	3,367.1	0.00	0.00	0.00
11,600.0	90.00	270.00	7,642.0	-885.0	-3,379.1	3,466.2	0.00	0.00	0.00
11,700.0	90.00	270.00	7,642.0	-885.0	-3,479.1	3,565.3	0.00	0.00	0.00
11,800.0	90.00	270.00	7,642.0	-885.0	-3,579.1	3,664.5	0.00	0.00	0.00
11,900.0	90.00	270.00	7,642.0	-885.0	-3,679.1	3,763.6	0.00	0.00	0.00
12,000.0	90.00	270.00	7,642.0	-885.0	-3,779.1	3,862.7	0.00	0.00	0.00
12,100.0	90.00	270.00	7,642.0	-885.0	-3,879.1	3,961.8	0.00	0.00	0.00
12,200.0	90.00	270.00	7,642.0	-885.0	-3,979.1	4,061.0	0.00	0.00	0.00
12,300.0	90.00	270.00	7,642.0	-885.0	-4,079.1	4,160.1	0.00	0.00	0.00
12,400.0	90.00	270.00	7,642.0	-885.0	-4,179.1	4,259.2	0.00	0.00	0.00
12,500.0	90.00	270.00	7,642.0	-885.0	-4,279.1	4,358.4	0.00	0.00	0.00
12,600.0	90.00	270.00	7,642.0	-885.0	-4,379.1	4,457.5	0.00	0.00	0.00
12,700.0	90.00	270.00	7,642.0	-885.0	-4,479.1	4,556.6	0.00	0.00	0.00
12,800.0	90.00	270.00	7,642.0	-885.0	-4,579.1	4,655.7	0.00	0.00	0.00
12,900.0	90.00	270.00	7,642.0	-885.0	-4,679.1	4,754.9	0.00	0.00	0.00
13,000.0	90.00	270.00	7,642.0	-885.0	-4,779.1	4,854.0	0.00	0.00	0.00
13,100.0	90.00	270.00	7,642.0	-885.0	-4,879.1	4,953.1	0.00	0.00	0.00
13,200.0	90.00	270.00	7,642.0	-885.0	-4,979.1	5,052.3	0.00	0.00	0.00
13,300.0	90.00	270.00	7,642.0	-885.0	-5,079.1	5,151.4	0.00	0.00	0.00
13,400.0	90.00	270.00	7,642.0	-885.0	-5,179.1	5,250.5	0.00	0.00	0.00
13,500.0	90.00	270.00	7,642.0	-885.0	-5,279.1	5,349.6	0.00	0.00	0.00
13,600.0	90.00	270.00	7,642.0	-885.0	-5,379.1	5,448.8	0.00	0.00	0.00
13,700.0	90.00	270.00	7,642.0	-885.0	-5,479.1	5,547.9	0.00	0.00	0.00
13,800.0	90.00	270.00	7,642.0	-885.0	-5,579.1	5,647.0	0.00	0.00	0.00
13,900.0	90.00	270.00	7,642.0	-885.0	-5,679.1	5,746.2	0.00	0.00	0.00
14,000.0	90.00	270.00	7,642.0	-885.0	-5,779.1	5,845.3	0.00	0.00	0.00
14,100.0	90.00	270.00	7,642.0	-885.0	-5,879.1	5,944.4	0.00	0.00	0.00
14,200.0	90.00	270.00	7,642.0	-885.0	-5,979.1	6,043.5	0.00	0.00	0.00

Database:	landmark	Local Co-ordinate Reference:	Well SRC Eberle 14-32-31CHZM
Company:	Synergy Resources	TVD Reference:	WELL @ 5047.0ft (Ensign Rig #134 - RKB - 13')
Project:	SEC.32-T1N-R66W	MD Reference:	WELL @ 5047.0ft (Ensign Rig #134 - RKB - 13')
Site:	SRC Eberle 14-32-31CHZM Pad Sec.32-T1N-R66W	North Reference:	True
Well:	SRC Eberle 14-32-31CHZM	Survey Calculation Method:	Minimum Curvature
Wellbore:	Wellbore #1		
Design:	Plan #3 (3-14-14)		

Planned Survey										
Measured Depth (ft)	Inclination (°)	Azimuth (°)	Vertical Depth (ft)	+N/-S (ft)	+E/-W (ft)	Vertical Section (ft)	Dogleg Rate (°/100ft)	Build Rate (°/100ft)	Turn Rate (°/100ft)	
14,300.0	90.00	270.00	7,642.0	-885.0	-6,079.1	6,142.7	0.00	0.00	0.00	
14,400.0	90.00	270.00	7,642.0	-885.0	-6,179.1	6,241.8	0.00	0.00	0.00	
14,500.0	90.00	270.00	7,642.0	-885.0	-6,279.1	6,340.9	0.00	0.00	0.00	
14,600.0	90.00	270.00	7,642.0	-885.0	-6,379.1	6,440.1	0.00	0.00	0.00	
14,700.0	90.00	270.00	7,642.0	-885.0	-6,479.1	6,539.2	0.00	0.00	0.00	
14,800.0	90.00	270.00	7,642.0	-885.0	-6,579.1	6,638.3	0.00	0.00	0.00	
14,880.0	90.00	270.00	7,642.0	-885.0	-6,659.0	6,717.6	0.00	0.00	0.00	
BHL 475'FSL & 2195'FEL, Sec.31										

Casing Points					
Measured Depth (ft)	Vertical Depth (ft)	Name	Casing Diameter (")	Hole Diameter (")	
8,164.1	7,642.0	7"	7	7-1/2	

Plan Annotations					
Measured Depth (ft)	Vertical Depth (ft)	Local Coordinates			
		+N/-S (ft)	+E/-W (ft)	Comment	
200.0	200.0	0.0	0.0	KOP #1	
7,039.1	6,925.8	-885.0	773.0	KOP #2	
8,164.1	7,642.0	-885.0	56.8	End of Build	



Synergy Resources

SEC.32-T1N-R66W

SRC Eberle 14-32-31CHZM Pad Sec.32-T1N-R66W

SRC Eberle 14-32-31CHZM

Wellbore #1

Plan #3 (3-14-14)

Anticollision Report

17 March, 2014

Company:	Synergy Resources	Local Co-ordinate Reference:	Well SRC Eberle 14-32-31CHZM
Project:	SEC.32-T1N-R66W	TVD Reference:	WELL @ 5047.0ft (Ensign Rig #134 - RKB - 13')
Reference Site:	SRC Eberle 14-32-31CHZM Pad Sec.32-T1N-R66W	MD Reference:	WELL @ 5047.0ft (Ensign Rig #134 - RKB - 13')
Site Error:	0.0ft	North Reference:	True
Reference Well:	SRC Eberle 14-32-31CHZM	Survey Calculation Method:	Minimum Curvature
Well Error:	0.0ft	Output errors are at	2.00 sigma
Reference Wellbore	Wellbore #1	Database:	landmark
Reference Design:	Plan #3 (3-14-14)	Offset TVD Reference:	Offset Datum

Reference	Plan #3 (3-14-14)		
Filter type:	NO GLOBAL FILTER: Using user defined selection & filtering criteria		
Interpolation Method:	MD Interval 100.0ft	Error Model:	ISCWSA
Depth Range:	Unlimited	Scan Method:	Closest Approach 3D
Results Limited by:	Maximum center-center distance of 1,000.0ft	Error Surface:	Elliptical Conic
Warning Levels Evaluated at:	2.00 Sigma		

Survey Tool Program	Date 3/17/2014			
From (ft)	To (ft)	Survey (Wellbore)	Tool Name	Description
0.0	14,879.2	Plan #3 (3-14-14) (Wellbore #1)	MWD	MWD - Standard

Summary						
Site Name	Reference Measured Depth (ft)	Offset Measured Depth (ft)	Distance Between Centres (ft)	Distance Between Ellipses (ft)	Separation Factor	Warning
Offset Well - Wellbore - Design						
SRC Eberle 14-32-31CHZM Pad Sec.32-T1N-R66W						
SRC Eberle 14-32-31NHZM - Wellbore #1 - Plan #3 (3-1	200.0	199.0	24.7	24.0	36.686	CC
SRC Eberle 14-32-31NHZM - Wellbore #1 - Plan #3 (3-1	14,880.0	14,700.3	271.5	-57.4	0.826	Level 1, ES, SF
SRC Eberle B-32CHZ - Wellbore #1 - Plan #2 (3-14-14)	200.0	196.0	90.8	90.1	136.430	CC, ES
SRC Eberle B-32CHZ - Wellbore #1 - Plan #2 (3-14-14)	12,200.0	12,179.6	442.8	191.4	1.761	SF
SRC Eberle B-32NHZ - Wellbore #1 - Plan #2 (3-14-14)	200.0	195.0	113.5	112.8	171.116	CC, ES
SRC Eberle B-32NHZ - Wellbore #1 - Plan #2 (3-14-14)	12,300.0	12,027.4	686.5	438.5	2.769	SF
SRC Eberle P-32CHZ - Wellbore #1 - Plan #2 (3-14-14)	200.0	197.0	68.1	67.4	101.979	CC, ES
SRC Eberle P-32CHZ - Wellbore #1 - Plan #2 (3-14-14)	12,300.0	12,162.6	887.4	633.1	3.490	SF
SRC Eberle P-32NHZ - Wellbore #1 - Plan #2 (3-14-14)	200.0	198.0	45.4	44.7	67.759	CC, ES
SRC Eberle P-32NHZ - Wellbore #1 - Plan #2 (3-14-14)	1,200.0	1,201.9	105.3	100.2	20.575	SF

Offset Design												Offset Site Error:		0.0 ft
SRC Eberle 14-32-31CHZM Pad Sec.32-T1N-R66W - SRC Eberle 14-32-31NHZM - Wellbore #1 - Plan												Offset Well Error:		0.0 ft
Survey Program: 0-MWD														
Reference		Offset		Semi Major Axis		Distance							Warning	
Measured Depth	Vertical Depth	Measured Depth	Vertical Depth	Reference	Offset	Highside Toolface	Offset Wellbore Centre		Between Centres	Between Ellipses	Minimum Separation	Separation Factor		
(ft)	(ft)	(ft)	(ft)	(ft)	(ft)	(°)	+N/-S (ft)	+E/-W (ft)	(ft)	(ft)	(ft)			
0.0	0.0	0.0	0.0	0.0	0.0	-89.22	0.3	-24.7	24.7					
100.0	100.0	99.0	99.0	0.1	0.1	-89.22	0.3	-24.7	24.7	24.4	0.22	110.243		
200.0	200.0	199.0	199.0	0.3	0.3	-89.22	0.3	-24.7	24.7	24.0	0.67	36.686	CC	
300.0	300.0	299.0	299.0	0.5	0.6	133.38	0.3	-24.7	25.2	24.1	1.10	22.923		
400.0	400.0	399.0	399.0	0.7	0.8	137.39	0.3	-24.7	27.1	25.6	1.53	17.726		
500.0	499.9	499.3	499.3	1.0	1.0	142.18	-0.2	-24.0	29.7	27.8	1.95	15.241		
600.0	599.7	599.7	599.7	1.2	1.2	146.60	-1.9	-22.0	32.3	30.0	2.37	13.671		
700.0	699.4	700.2	700.1	1.5	1.4	150.74	-4.7	-18.6	35.0	32.2	2.80	12.516		
800.0	798.9	800.8	800.4	1.7	1.6	154.66	-8.6	-13.9	37.7	34.5	3.24	11.647		
900.0	898.3	901.4	900.7	2.0	1.9	158.42	-13.7	-7.8	40.5	36.8	3.69	10.984		
1,000.0	997.4	1,002.0	1,000.9	2.3	2.1	162.03	-19.9	-0.4	43.4	39.2	4.14	10.472		
1,100.0	1,096.3	1,102.7	1,100.9	2.7	2.4	165.52	-27.2	8.4	46.3	41.7	4.60	10.074		
1,200.0	1,194.9	1,203.5	1,200.8	3.0	2.7	168.90	-35.7	18.5	49.4	44.3	5.06	9.761		
1,300.0	1,293.3	1,304.3	1,300.5	3.4	3.0	172.18	-45.3	30.0	52.6	47.0	5.53	9.513		
1,400.0	1,391.3	1,405.1	1,400.0	3.8	3.4	175.35	-56.0	42.9	55.7	49.7	6.00	9.282		
1,500.0	1,489.2	1,505.9	1,499.1	4.3	3.8	178.39	-67.8	57.1	57.6	51.1	6.50	8.862		

CC - Min centre to center distance or convergent point, SF - min separation factor, ES - min ellipse separation

Company:	Synergy Resources	Local Co-ordinate Reference:	Well SRC Eberle 14-32-31CHZM
Project:	SEC.32-T1N-R66W	TVD Reference:	WELL @ 5047.0ft (Ensign Rig #134 - RKB - 13')
Reference Site:	SRC Eberle 14-32-31CHZM Pad Sec.32-T1N-R66W	MD Reference:	WELL @ 5047.0ft (Ensign Rig #134 - RKB - 13')
Site Error:	0.0ft	North Reference:	True
Reference Well:	SRC Eberle 14-32-31CHZM	Survey Calculation Method:	Minimum Curvature
Well Error:	0.0ft	Output errors are at	2.00 sigma
Reference Wellbore	Wellbore #1	Database:	landmark
Reference Design:	Plan #3 (3-14-14)	Offset TVD Reference:	Offset Datum

Offset Design		SRC Eberle 14-32-31CHZM Pad Sec.32-T1N-R66W - SRC Eberle 14-32-31NHZM - Wellbore #1 - Plan										Offset Site Error: 0.0 ft			
Survey Program: 0-MWD														Offset Well Error: 0.0 ft	
Reference		Offset		Semi Major Axis			Distance							Warning	
Measured Depth (ft)	Vertical Depth (ft)	Measured Depth (ft)	Vertical Depth (ft)	Reference (ft)	Offset (ft)	Highside Toolface (°)	Offset Wellbore Centre		Between Centres (ft)	Between Ellipses (ft)	Minimum Separation (ft)	Separation Factor			
							+N/-S (ft)	+E/-W (ft)							
1,600.0	1,587.2	1,605.9	1,597.2	4.7	4.1	-178.68	-79.9	71.6	59.0	52.0	7.01	8.413			
1,700.0	1,685.2	1,705.8	1,695.3	5.1	4.5	-175.88	-92.1	86.2	60.5	53.0	7.54	8.024			
1,800.0	1,783.1	1,805.8	1,793.5	5.6	5.0	-173.23	-104.2	100.8	62.2	54.1	8.09	7.682			
1,900.0	1,881.1	1,905.7	1,891.6	6.0	5.4	-170.73	-116.4	115.3	64.0	55.3	8.67	7.379			
2,000.0	1,979.0	2,005.7	1,989.7	6.4	5.8	-168.36	-128.5	129.9	65.9	56.6	9.27	7.108			
2,100.0	2,077.0	2,105.6	2,087.9	6.9	6.2	-166.13	-140.6	144.4	67.9	58.0	9.89	6.864			
2,200.0	2,175.0	2,205.6	2,186.0	7.3	6.6	-164.03	-152.8	159.0	70.0	59.4	10.53	6.643			
2,300.0	2,272.9	2,305.5	2,284.1	7.8	7.0	-162.05	-164.9	173.6	72.2	61.0	11.20	6.444			
2,400.0	2,370.9	2,405.4	2,382.3	8.2	7.5	-160.20	-177.1	188.1	74.4	62.5	11.88	6.263			
2,500.0	2,468.8	2,505.4	2,480.4	8.7	7.9	-158.45	-189.2	202.7	76.8	64.2	12.59	6.098			
2,600.0	2,566.8	2,605.3	2,578.5	9.1	8.3	-156.81	-201.3	217.3	79.2	65.9	13.31	5.949			
2,700.0	2,664.8	2,705.3	2,676.7	9.6	8.7	-155.27	-213.5	231.8	81.7	67.6	14.05	5.813			
2,800.0	2,762.7	2,805.2	2,774.8	10.0	9.1	-153.82	-225.6	246.4	84.2	69.4	14.80	5.689			
2,900.0	2,860.7	2,905.2	2,872.9	10.5	9.6	-152.45	-237.8	260.9	86.8	71.2	15.56	5.576			
3,000.0	2,958.6	3,005.1	2,971.0	10.9	10.0	-151.17	-249.9	275.5	89.4	73.1	16.33	5.473			
3,100.0	3,056.6	3,105.1	3,069.2	11.3	10.4	-149.96	-262.0	290.1	92.1	75.0	17.12	5.379			
3,200.0	3,154.5	3,205.0	3,167.3	11.8	10.9	-148.81	-274.2	304.6	94.8	76.9	17.91	5.293			
3,300.0	3,252.5	3,305.0	3,265.4	12.2	11.3	-147.73	-286.3	319.2	97.5	78.8	18.70	5.214			
3,400.0	3,350.5	3,404.9	3,363.6	12.7	11.7	-146.71	-298.5	333.8	100.3	80.8	19.51	5.142			
3,500.0	3,448.4	3,504.8	3,461.7	13.1	12.1	-145.75	-310.6	348.3	103.1	82.8	20.32	5.075			
3,600.0	3,546.4	3,604.8	3,559.8	13.6	12.6	-144.84	-322.8	362.9	105.9	84.8	21.13	5.013			
3,700.0	3,644.3	3,704.7	3,658.0	14.1	13.0	-143.97	-334.9	377.4	108.8	86.8	21.95	4.957			
3,800.0	3,742.3	3,804.7	3,756.1	14.5	13.4	-143.15	-347.0	392.0	111.7	88.9	22.77	4.904			
3,900.0	3,840.3	3,904.6	3,854.2	15.0	13.9	-142.37	-359.2	406.6	114.6	91.0	23.60	4.856			
4,000.0	3,938.2	4,004.6	3,952.4	15.4	14.3	-141.63	-371.3	421.1	117.5	93.1	24.42	4.811			
4,100.0	4,036.2	4,104.5	4,050.5	15.9	14.7	-140.93	-383.5	435.7	120.4	95.2	25.26	4.769			
4,200.0	4,134.1	4,204.5	4,148.6	16.3	15.2	-140.25	-395.6	450.3	123.4	97.3	26.09	4.730			
4,300.0	4,232.1	4,304.4	4,246.7	16.8	15.6	-139.62	-407.7	464.8	126.4	99.5	26.92	4.694			
4,400.0	4,330.1	4,404.4	4,344.9	17.2	16.0	-139.01	-419.9	479.4	129.4	101.6	27.76	4.661			
4,500.0	4,428.0	4,504.3	4,443.0	17.7	16.4	-138.42	-432.0	493.9	132.4	103.8	28.60	4.629			
4,600.0	4,526.0	4,604.3	4,541.1	18.1	16.9	-137.87	-444.2	508.5	135.4	106.0	29.44	4.600			
4,700.0	4,623.9	4,704.2	4,639.3	18.6	17.3	-137.33	-456.3	523.1	138.4	108.2	30.28	4.572			
4,800.0	4,721.9	4,804.1	4,737.4	19.0	17.7	-136.83	-468.4	537.6	141.5	110.4	31.12	4.546			
4,900.0	4,819.9	4,904.1	4,835.5	19.5	18.2	-136.34	-480.6	552.2	144.5	112.6	31.96	4.522			
5,000.0	4,917.8	5,004.0	4,933.7	19.9	18.6	-135.87	-492.7	566.8	147.6	114.8	32.81	4.499			
5,100.0	5,015.8	5,104.0	5,031.8	20.4	19.0	-135.42	-504.9	581.3	150.7	117.0	33.65	4.477			
5,200.0	5,113.7	5,203.9	5,129.9	20.8	19.5	-134.99	-517.0	595.9	153.7	119.3	34.50	4.457			
5,300.0	5,211.7	5,303.9	5,228.1	21.3	19.9	-134.58	-529.2	610.4	156.8	121.5	35.34	4.438			
5,400.0	5,309.7	5,403.8	5,326.2	21.7	20.3	-134.18	-541.3	625.0	159.9	123.7	36.19	4.420			
5,500.0	5,407.6	5,503.8	5,424.3	22.2	20.8	-133.80	-553.4	639.6	163.0	126.0	37.03	4.403			
5,600.0	5,505.6	5,603.7	5,522.5	22.6	21.2	-133.43	-565.6	654.1	166.2	128.3	37.88	4.386			
5,700.0	5,603.5	5,703.7	5,620.6	23.1	21.6	-133.07	-577.7	668.7	169.3	130.5	38.73	4.371			
5,800.0	5,701.5	5,803.6	5,718.7	23.5	22.1	-132.73	-589.9	683.3	172.4	132.8	39.57	4.356			
5,900.0	5,799.5	5,903.6	5,816.8	24.0	22.5	-132.40	-602.0	697.8	175.5	135.1	40.42	4.342			
6,000.0	5,897.4	6,003.5	5,915.0	24.4	22.9	-132.08	-614.1	712.4	178.7	137.4	41.27	4.329			
6,100.0	5,995.4	6,103.4	6,013.1	24.9	23.4	-131.78	-626.3	726.9	181.8	139.7	42.12	4.317			
6,200.0	6,093.3	6,200.0	6,108.0	25.3	23.7	-131.62	-637.7	740.7	185.2	142.4	42.88	4.320			
6,300.0	6,191.3	6,297.9	6,204.7	25.8	24.0	-132.21	-647.4	752.3	190.3	147.0	43.34	4.391			
6,400.0	6,289.4	6,394.0	6,300.1	26.2	24.2	-133.46	-654.9	761.3	196.8	153.2	43.55	4.519			
6,500.0	6,388.1	6,489.9	6,395.6	26.5	24.4	-134.76	-660.3	767.7	203.0	159.4	43.60	4.655			

CC - Min centre to center distance or convergent point, SF - min separation factor, ES - min ellipse separation

Company:	Synergy Resources	Local Co-ordinate Reference:	Well SRC Eberle 14-32-31CHZM
Project:	SEC.32-T1N-R66W	TVD Reference:	WELL @ 5047.0ft (Ensign Rig #134 - RKB - 13')
Reference Site:	SRC Eberle 14-32-31CHZM Pad Sec.32-T1N-R66W	MD Reference:	WELL @ 5047.0ft (Ensign Rig #134 - RKB - 13')
Site Error:	0.0ft	North Reference:	True
Reference Well:	SRC Eberle 14-32-31CHZM	Survey Calculation Method:	Minimum Curvature
Well Error:	0.0ft	Output errors are at	2.00 sigma
Reference Wellbore	Wellbore #1	Database:	landmark
Reference Design:	Plan #3 (3-14-14)	Offset TVD Reference:	Offset Datum

Offset Design		SRC Eberle 14-32-31CHZM Pad Sec.32-T1N-R66W - SRC Eberle 14-32-31NHZM - Wellbore #1 - Plan										Offset Site Error:		0.0 ft
Survey Program: 0-MWD												Offset Well Error:		0.0 ft
Reference		Offset		Semi Major Axis			Distance							
Measured Depth	Vertical Depth	Measured Depth	Vertical Depth	Reference	Offset	Highside Toolface	Offset Wellbore Centre		Between Centres	Between Ellipses	Minimum Separation	Separation Factor	Warning	
(ft)	(ft)	(ft)	(ft)	(ft)	(ft)	(°)	+N/-S (ft)	+E/-W (ft)	(ft)	(ft)	(ft)			
6,600.0	6,487.3	6,585.5	6,491.1	26.7	24.6	-136.04	-663.6	771.8	208.8	165.2	43.58	4.790		
6,700.0	6,586.9	6,680.9	6,586.5	26.9	24.7	-137.31	-664.9	773.3	214.1	170.7	43.49	4.924		
6,800.0	6,686.7	6,780.1	6,685.7	27.1	24.8	-138.36	-665.0	773.3	218.4	174.9	43.42	5.029		
6,900.0	6,786.7	6,880.1	6,785.7	27.2	24.9	-138.84	-665.0	773.1	220.0	176.5	43.47	5.061		
7,000.0	6,886.7	6,979.1	6,884.1	27.3	24.9	-2.47	-665.0	763.5	220.2	175.3	44.92	4.903		
7,100.0	6,986.6	7,074.3	6,976.7	27.4	24.9	82.37	-665.0	741.6	222.1	180.9	41.18	5.393		
7,200.0	7,085.3	7,166.9	7,063.2	27.4	24.7	77.23	-665.0	708.7	225.8	186.5	39.39	5.734		
7,300.0	7,180.9	7,257.3	7,142.8	27.3	24.5	72.54	-665.0	666.1	231.1	193.4	37.69	6.131		
7,400.0	7,271.6	7,345.8	7,215.0	27.1	24.3	68.36	-665.0	615.0	237.2	201.1	36.15	6.561		
7,500.0	7,355.5	7,432.7	7,279.2	26.9	24.1	64.75	-665.0	556.5	243.8	209.0	34.84	6.998		
7,600.0	7,431.1	7,518.2	7,335.0	26.6	24.0	61.70	-665.0	491.8	250.4	216.6	33.80	7.408		
7,700.0	7,496.8	7,600.0	7,380.9	26.4	23.8	59.25	-665.0	424.1	256.6	223.5	33.16	7.740		
7,800.0	7,551.4	7,686.0	7,420.4	26.2	23.7	57.23	-665.0	347.7	262.0	229.0	33.02	7.934		
7,900.0	7,593.8	7,768.8	7,449.5	26.0	23.8	55.76	-665.0	270.3	266.4	232.8	33.55	7.940		
8,000.0	7,623.3	7,850.0	7,469.3	25.9	23.9	54.78	-665.0	191.6	269.5	234.7	34.78	7.747		
8,100.0	7,639.1	7,933.0	7,480.1	25.8	24.3	54.24	-665.0	109.3	271.1	234.4	36.74	7.381		
8,200.0	7,642.0	8,021.5	7,482.0	26.0	24.9	54.15	-665.0	20.9	271.5	232.4	39.07	6.948		
8,300.0	7,642.0	8,121.5	7,482.0	26.6	26.0	54.15	-665.0	-79.1	271.5	230.0	41.44	6.552		
8,400.0	7,642.0	8,221.5	7,482.0	27.9	27.5	54.15	-665.0	-179.1	271.5	227.3	44.16	6.147		
8,500.0	7,642.0	8,321.5	7,482.0	29.6	29.3	54.15	-665.0	-279.1	271.5	224.3	47.19	5.753		
8,600.0	7,642.0	8,421.5	7,482.0	31.5	31.3	54.15	-665.0	-379.1	271.5	221.0	50.46	5.380		
8,700.0	7,642.0	8,521.5	7,482.0	33.6	33.4	54.15	-665.0	-479.1	271.5	217.5	53.93	5.034		
8,800.0	7,642.0	8,621.5	7,482.0	35.8	35.6	54.15	-665.0	-579.1	271.5	213.9	57.56	4.716		
8,900.0	7,642.0	8,721.5	7,482.0	38.1	37.9	54.15	-665.0	-679.1	271.5	210.1	61.33	4.426		
9,000.0	7,642.0	8,821.5	7,482.0	40.5	40.2	54.15	-665.0	-779.1	271.5	206.3	65.21	4.163		
9,100.0	7,642.0	8,921.5	7,482.0	42.9	42.6	54.15	-665.0	-879.1	271.5	202.3	69.19	3.924		
9,200.0	7,642.0	9,021.5	7,482.0	45.4	45.1	54.15	-665.0	-979.1	271.5	198.2	73.24	3.707		
9,300.0	7,642.0	9,121.5	7,482.0	47.9	47.6	54.15	-665.0	-1,079.1	271.5	194.1	77.35	3.509		
9,400.0	7,642.0	9,221.5	7,482.0	50.4	50.1	54.15	-665.0	-1,179.1	271.5	189.9	81.52	3.330		
9,500.0	7,642.0	9,321.5	7,482.0	52.9	52.7	54.15	-665.0	-1,279.1	271.5	185.7	85.74	3.166		
9,600.0	7,642.0	9,421.5	7,482.0	55.5	55.3	54.15	-665.0	-1,379.1	271.5	181.5	90.00	3.016		
9,700.0	7,642.0	9,521.5	7,482.0	58.1	57.9	54.15	-665.0	-1,479.1	271.5	177.2	94.30	2.879		
9,800.0	7,642.0	9,621.5	7,482.0	60.7	60.5	54.15	-665.0	-1,579.1	271.5	172.8	98.62	2.753		
9,900.0	7,642.0	9,721.5	7,482.0	63.4	63.1	54.15	-665.0	-1,679.1	271.5	168.5	102.98	2.636		
10,000.0	7,642.0	9,821.5	7,482.0	66.0	65.8	54.15	-665.0	-1,779.1	271.5	164.1	107.35	2.529		
10,100.0	7,642.0	9,921.5	7,482.0	68.7	68.4	54.15	-665.0	-1,879.1	271.5	159.7	111.75	2.429		
10,200.0	7,642.0	10,021.5	7,482.0	71.3	71.1	54.15	-665.0	-1,979.1	271.5	155.3	116.16	2.337		
10,300.0	7,642.0	10,121.5	7,482.0	74.0	73.8	54.15	-665.0	-2,079.1	271.5	150.9	120.59	2.251		
10,400.0	7,642.0	10,221.5	7,482.0	76.7	76.5	54.15	-665.0	-2,179.1	271.5	146.4	125.04	2.171		
10,500.0	7,642.0	10,321.5	7,482.0	79.4	79.2	54.15	-665.0	-2,279.1	271.5	142.0	129.50	2.096		
10,600.0	7,642.0	10,421.5	7,482.0	82.1	81.9	54.15	-665.0	-2,379.1	271.5	137.5	133.97	2.026		
10,700.0	7,642.0	10,521.5	7,482.0	84.8	84.6	54.15	-665.0	-2,479.1	271.5	133.0	138.45	1.961		
10,800.0	7,642.0	10,621.5	7,482.0	87.5	87.3	54.15	-665.0	-2,579.1	271.5	128.5	142.94	1.899		
10,900.0	7,642.0	10,721.5	7,482.0	90.2	90.0	54.15	-665.0	-2,679.1	271.5	124.0	147.44	1.841		
11,000.0	7,642.0	10,821.5	7,482.0	92.9	92.7	54.15	-665.0	-2,779.1	271.5	119.5	151.95	1.787		
11,100.0	7,642.0	10,921.5	7,482.0	95.7	95.5	54.15	-665.0	-2,879.1	271.5	115.0	156.47	1.735		
11,200.0	7,642.0	11,021.5	7,482.0	98.4	98.2	54.15	-665.0	-2,979.1	271.5	110.5	160.99	1.686		
11,300.0	7,642.0	11,121.5	7,482.0	101.1	100.9	54.15	-665.0	-3,079.1	271.5	106.0	165.51	1.640		
11,400.0	7,642.0	11,221.5	7,482.0	103.9	103.7	54.15	-665.0	-3,179.1	271.5	101.4	170.05	1.596		
11,500.0	7,642.0	11,321.5	7,482.0	106.6	106.4	54.15	-665.0	-3,279.1	271.5	96.9	174.59	1.555		
11,600.0	7,642.0	11,421.5	7,482.0	109.4	109.2	54.15	-665.0	-3,379.1	271.5	92.3	179.13	1.515		

CC - Min centre to center distance or convergent point, SF - min separation factor, ES - min ellipse separation

Company:	Synergy Resources	Local Co-ordinate Reference:	Well SRC Eberle 14-32-31CHZM
Project:	SEC.32-T1N-R66W	TVD Reference:	WELL @ 5047.0ft (Ensign Rig #134 - RKB - 13')
Reference Site:	SRC Eberle 14-32-31CHZM Pad Sec.32-T1N-R66W	MD Reference:	WELL @ 5047.0ft (Ensign Rig #134 - RKB - 13')
Site Error:	0.0ft	North Reference:	True
Reference Well:	SRC Eberle 14-32-31CHZM	Survey Calculation Method:	Minimum Curvature
Well Error:	0.0ft	Output errors are at	2.00 sigma
Reference Wellbore	Wellbore #1	Database:	landmark
Reference Design:	Plan #3 (3-14-14)	Offset TVD Reference:	Offset Datum

Offset Design SRC Eberle 14-32-31CHZM Pad Sec.32-T1N-R66W - SRC Eberle 14-32-31NHZM - Wellbore #1 - Plan													Offset Site Error:	0.0 ft
Survey Program: 0-MWD													Offset Well Error:	0.0 ft
Reference		Offset		Semi Major Axis			Distance							
Measured Depth (ft)	Vertical Depth (ft)	Measured Depth (ft)	Vertical Depth (ft)	Reference (ft)	Offset (ft)	Highside Toolface (°)	Offset Wellbore Centre +N/-S (ft)	+E/-W (ft)	Between Centres (ft)	Between Ellipses (ft)	Minimum Separation (ft)	Separation Factor	Warning	
11,700.0	7,642.0	11,521.5	7,482.0	112.1	111.9	54.15	-665.0	-3,479.1	271.5	87.8	183.68	1.478	Level 3	
11,800.0	7,642.0	11,621.5	7,482.0	114.9	114.7	54.15	-665.0	-3,579.1	271.5	83.2	188.23	1.442	Level 3	
11,900.0	7,642.0	11,721.5	7,482.0	117.6	117.4	54.15	-665.0	-3,679.1	271.5	78.7	192.79	1.408	Level 3	
12,000.0	7,642.0	11,821.5	7,482.0	120.4	120.2	54.15	-665.0	-3,779.1	271.5	74.1	197.35	1.376	Level 3	
12,100.0	7,642.0	11,921.5	7,482.0	123.1	123.0	54.15	-665.0	-3,879.1	271.5	69.6	201.91	1.344	Level 3	
12,200.0	7,642.0	12,021.5	7,482.0	125.9	125.7	54.15	-665.0	-3,979.1	271.5	65.0	206.48	1.315	Level 3	
12,300.0	7,642.0	12,121.5	7,482.0	128.7	128.5	54.15	-665.0	-4,079.1	271.5	60.4	211.04	1.286	Level 3	
12,400.0	7,642.0	12,221.5	7,482.0	131.4	131.2	54.15	-665.0	-4,179.1	271.5	55.8	215.62	1.259	Level 3	
12,500.0	7,642.0	12,321.5	7,482.0	134.2	134.0	54.15	-665.0	-4,279.1	271.5	51.3	220.19	1.233	Level 2	
12,600.0	7,642.0	12,421.5	7,482.0	137.0	136.8	54.15	-665.0	-4,379.1	271.5	46.7	224.77	1.208	Level 2	
12,700.0	7,642.0	12,521.5	7,482.0	139.7	139.5	54.15	-665.0	-4,479.1	271.5	42.1	229.35	1.184	Level 2	
12,800.0	7,642.0	12,621.5	7,482.0	142.5	142.3	54.15	-665.0	-4,579.1	271.5	37.5	233.93	1.160	Level 2	
12,900.0	7,642.0	12,721.5	7,482.0	145.3	145.1	54.15	-665.0	-4,679.1	271.5	33.0	238.51	1.138	Level 2	
13,000.0	7,642.0	12,821.5	7,482.0	148.0	147.9	54.15	-665.0	-4,779.1	271.5	28.4	243.09	1.117	Level 2	
13,100.0	7,642.0	12,921.5	7,482.0	150.8	150.6	54.15	-665.0	-4,879.1	271.5	23.8	247.68	1.096	Level 2	
13,200.0	7,642.0	13,021.5	7,482.0	153.6	153.4	54.15	-665.0	-4,979.1	271.5	19.2	252.27	1.076	Level 2	
13,300.0	7,642.0	13,121.5	7,482.0	156.4	156.2	54.15	-665.0	-5,079.1	271.5	14.6	256.86	1.057	Level 2	
13,400.0	7,642.0	13,221.5	7,482.0	159.1	159.0	54.15	-665.0	-5,179.1	271.5	10.0	261.45	1.038	Level 2	
13,500.0	7,642.0	13,321.5	7,482.0	161.9	161.7	54.15	-665.0	-5,279.1	271.5	5.4	266.04	1.020	Level 2	
13,600.0	7,642.0	13,421.5	7,482.0	164.7	164.5	54.15	-665.0	-5,379.1	271.5	0.8	270.64	1.003	Level 2	
13,700.0	7,642.0	13,521.5	7,482.0	167.5	167.3	54.15	-665.0	-5,479.1	271.5	-3.8	275.23	0.986	Level 1	
13,800.0	7,642.0	13,621.5	7,482.0	170.2	170.1	54.15	-665.0	-5,579.1	271.5	-8.4	279.83	0.970	Level 1	
13,900.0	7,642.0	13,721.5	7,482.0	173.0	172.9	54.15	-665.0	-5,679.1	271.5	-13.0	284.43	0.954	Level 1	
14,000.0	7,642.0	13,821.5	7,482.0	175.8	175.7	54.15	-665.0	-5,779.1	271.5	-17.6	289.03	0.939	Level 1	
14,100.0	7,642.0	13,921.5	7,482.0	178.6	178.4	54.15	-665.0	-5,879.1	271.5	-22.2	293.63	0.925	Level 1	
14,200.0	7,642.0	14,021.5	7,482.0	181.4	181.2	54.15	-665.0	-5,979.1	271.5	-26.8	298.23	0.910	Level 1	
14,300.0	7,642.0	14,121.5	7,482.0	184.2	184.0	54.15	-665.0	-6,079.1	271.5	-31.4	302.83	0.896	Level 1	
14,400.0	7,642.0	14,221.5	7,482.0	186.9	186.8	54.15	-665.0	-6,179.1	271.5	-36.0	307.43	0.883	Level 1	
14,500.0	7,642.0	14,321.5	7,482.0	189.7	189.6	54.15	-665.0	-6,279.1	271.5	-40.6	312.04	0.870	Level 1	
14,600.0	7,642.0	14,421.5	7,482.0	192.5	192.4	54.15	-665.0	-6,379.1	271.5	-45.2	316.64	0.857	Level 1	
14,700.0	7,642.0	14,521.5	7,482.0	195.3	195.2	54.15	-665.0	-6,479.1	271.5	-49.8	321.25	0.845	Level 1	
14,800.0	7,642.0	14,621.5	7,482.0	198.1	197.9	54.15	-665.0	-6,579.1	271.5	-54.4	325.85	0.833	Level 1	
14,857.9	7,642.0	14,679.4	7,482.0	199.1	199.6	54.15	-665.0	-6,637.0	271.5	-56.6	328.03	0.828	Level 1	
14,880.0	7,642.0	14,700.3	7,482.0	199.5	200.1	54.15	-665.0	-6,657.9	271.5	-57.4	328.83	0.826	Level 1, ES, SF	

Company:	Synergy Resources	Local Co-ordinate Reference:	Well SRC Eberle 14-32-31CHZM
Project:	SEC.32-T1N-R66W	TVD Reference:	WELL @ 5047.0ft (Ensign Rig #134 - RKB - 13')
Reference Site:	SRC Eberle 14-32-31CHZM Pad Sec.32-T1N-R66W	MD Reference:	WELL @ 5047.0ft (Ensign Rig #134 - RKB - 13')
Site Error:	0.0ft	North Reference:	True
Reference Well:	SRC Eberle 14-32-31CHZM	Survey Calculation Method:	Minimum Curvature
Well Error:	0.0ft	Output errors are at	2.00 sigma
Reference Wellbore	Wellbore #1	Database:	landmark
Reference Design:	Plan #3 (3-14-14)	Offset TVD Reference:	Offset Datum

Offset Design		SRC Eberle 14-32-31CHZM Pad Sec.32-T1N-R66W - SRC Eberle B-32CHZ - Wellbore #1 - Plan #2 (3-										Offset Site Error:		0.0 ft		
Survey Program: 0-MWD														Offset Well Error:		0.0 ft
Reference		Offset		Semi Major Axis			Distance								Warning	
Measured Depth	Vertical Depth	Measured Depth	Vertical Depth	Reference	Offset	Highside Toolface	Offset Wellbore Centre		Between Centres	Between Ellipses	Minimum Separation	Separation Factor				
(ft)	(ft)	(ft)	(ft)	(ft)	(ft)	(°)	+N/-S (ft)	+E/-W (ft)	(ft)	(ft)	(ft)					
0.0	0.0	0.0	0.0	0.0	0.0	-89.80	0.3	-90.8	90.9							
100.0	100.0	96.0	96.0	0.1	0.1	-89.80	0.3	-90.8	90.8	90.5	0.22	412.060				
200.0	200.0	196.0	196.0	0.3	0.3	-89.80	0.3	-90.8	90.8	90.1	0.67	136.430	CC, ES			
300.0	300.0	296.0	296.0	0.5	0.6	131.74	0.3	-90.8	91.3	90.3	1.09	83.454				
400.0	400.0	396.0	396.0	0.7	0.8	132.93	0.3	-90.8	93.1	91.6	1.52	61.153				
500.0	499.9	495.9	495.9	1.0	1.0	134.81	0.3	-90.8	96.1	94.2	1.97	48.917				
600.0	599.7	595.7	595.7	1.2	1.2	137.25	0.3	-90.8	100.5	98.1	2.42	41.584				
700.0	699.4	695.4	695.4	1.5	1.5	140.08	0.3	-90.8	106.4	103.6	2.88	36.993				
800.0	798.9	794.9	794.9	1.7	1.7	143.12	0.3	-90.8	114.0	110.6	3.34	34.101				
900.0	898.3	894.3	894.3	2.0	1.9	146.22	0.3	-90.8	123.2	119.4	3.81	32.343				
1,000.0	997.4	993.4	993.4	2.3	2.1	149.26	0.3	-90.8	134.3	130.0	4.28	31.380				
1,100.0	1,096.3	1,092.3	1,092.3	2.7	2.3	152.13	0.3	-90.8	147.2	142.5	4.75	30.996				
1,200.0	1,194.9	1,190.9	1,190.9	3.0	2.6	154.79	0.3	-90.8	162.0	156.8	5.22	31.045				
1,300.0	1,293.3	1,292.1	1,292.1	3.4	2.8	157.27	0.0	-90.1	178.0	172.3	5.67	31.378				
1,400.0	1,391.3	1,393.9	1,393.8	3.8	3.0	159.56	-1.2	-87.8	194.0	187.9	6.11	31.747				
1,500.0	1,489.2	1,496.1	1,496.0	4.3	3.2	161.58	-3.2	-84.0	208.8	202.2	6.56	31.840				
1,600.0	1,587.2	1,598.9	1,598.6	4.7	3.4	163.38	-6.0	-78.4	222.0	215.0	7.01	31.675				
1,700.0	1,685.2	1,702.1	1,701.5	5.1	3.6	165.03	-9.7	-71.2	233.6	226.2	7.47	31.296				
1,800.0	1,783.1	1,805.7	1,804.6	5.6	3.8	166.58	-14.3	-62.3	243.7	235.7	7.93	30.739				
1,900.0	1,881.1	1,909.6	1,907.8	6.0	4.1	168.08	-19.7	-51.7	252.1	243.7	8.39	30.033				
2,000.0	1,979.0	2,013.7	2,011.0	6.4	4.4	169.57	-26.0	-39.4	258.8	250.0	8.86	29.201				
2,100.0	2,077.0	2,118.0	2,114.1	6.9	4.7	171.06	-33.1	-25.5	264.0	254.6	9.34	28.260				
2,200.0	2,175.0	2,222.4	2,217.0	7.3	5.0	172.60	-41.2	-9.8	267.5	257.7	9.82	27.231				
2,300.0	2,272.9	2,326.9	2,319.7	7.8	5.3	174.20	-50.0	7.5	269.5	259.2	10.32	26.119				
2,400.0	2,370.9	2,428.1	2,418.8	8.2	5.7	175.81	-59.3	25.6	270.3	259.5	10.82	24.992				
2,500.0	2,468.8	2,527.9	2,516.5	8.7	6.1	177.40	-68.4	43.4	271.3	259.9	11.32	23.956				
2,600.0	2,566.8	2,627.6	2,614.2	9.1	6.4	178.98	-77.6	61.3	272.4	260.6	11.84	23.002				
2,700.0	2,664.8	2,727.3	2,711.9	9.6	6.8	-179.46	-86.7	79.2	273.8	261.4	12.38	22.118				
2,800.0	2,762.7	2,827.0	2,809.5	10.0	7.2	-177.92	-95.9	97.0	275.3	262.4	12.93	21.298				
2,900.0	2,860.7	2,926.7	2,907.2	10.5	7.6	-176.39	-105.0	114.9	277.1	263.6	13.49	20.533				
3,000.0	2,958.6	3,026.4	3,004.9	10.9	8.0	-174.89	-114.2	132.7	279.0	264.9	14.08	19.820				
3,100.0	3,056.6	3,126.1	3,102.6	11.3	8.5	-173.41	-123.3	150.6	281.2	266.5	14.68	19.152				
3,200.0	3,154.5	3,225.8	3,200.2	11.8	8.9	-171.94	-132.5	168.4	283.5	268.2	15.30	18.527				
3,300.0	3,252.5	3,325.6	3,297.9	12.2	9.3	-170.51	-141.6	186.3	286.0	270.1	15.94	17.941				
3,400.0	3,350.5	3,425.3	3,395.6	12.7	9.7	-169.10	-150.8	204.1	288.7	272.1	16.60	17.391				
3,500.0	3,448.4	3,525.0	3,493.3	13.1	10.1	-167.71	-159.9	222.0	291.5	274.3	17.28	16.874				
3,600.0	3,546.4	3,624.7	3,590.9	13.6	10.6	-166.36	-169.0	239.8	294.6	276.6	17.97	16.389				
3,700.0	3,644.3	3,724.4	3,688.6	14.1	11.0	-165.03	-178.2	257.7	297.7	279.1	18.69	15.934				
3,800.0	3,742.3	3,824.1	3,786.3	14.5	11.4	-163.73	-187.3	275.6	301.1	281.7	19.42	15.506				
3,900.0	3,840.3	3,923.8	3,883.9	15.0	11.9	-162.46	-196.5	293.4	304.6	284.4	20.17	15.104				
4,000.0	3,938.2	4,023.5	3,981.6	15.4	12.3	-161.22	-205.6	311.3	308.2	287.3	20.93	14.726				
4,100.0	4,036.2	4,123.3	4,079.3	15.9	12.7	-160.01	-214.8	329.1	312.0	290.3	21.71	14.371				
4,200.0	4,134.1	4,223.0	4,177.0	16.3	13.2	-158.83	-223.9	347.0	315.9	293.4	22.50	14.038				
4,300.0	4,232.1	4,322.7	4,274.6	16.8	13.6	-157.67	-233.1	364.8	320.0	296.7	23.31	13.726				
4,400.0	4,330.1	4,422.4	4,372.3	17.2	14.0	-156.55	-242.2	382.7	324.2	300.0	24.13	13.432				
4,500.0	4,428.0	4,522.1	4,470.0	17.7	14.5	-155.46	-251.4	400.5	328.5	303.5	24.97	13.157				
4,600.0	4,526.0	4,621.8	4,567.7	18.1	14.9	-154.39	-260.5	418.4	332.9	307.1	25.81	12.898				
4,700.0	4,623.9	4,721.5	4,665.3	18.6	15.4	-153.35	-269.7	436.2	337.4	310.7	26.66	12.655				
4,800.0	4,721.9	4,821.2	4,763.0	19.0	15.8	-152.34	-278.8	454.1	342.0	314.5	27.53	12.426				
4,900.0	4,819.9	4,921.0	4,860.7	19.5	16.2	-151.36	-287.9	472.0	346.8	318.4	28.40	12.212				
5,000.0	4,917.8	5,020.7	4,958.4	19.9	16.7	-150.40	-297.1	489.8	351.6	322.3	29.28	12.010				

CC - Min centre to center distance or convergent point, SF - min separation factor, ES - min ellipse separation

Company:	Synergy Resources	Local Co-ordinate Reference:	Well SRC Eberle 14-32-31CHZM
Project:	SEC.32-T1N-R66W	TVD Reference:	WELL @ 5047.0ft (Ensign Rig #134 - RKB - 13')
Reference Site:	SRC Eberle 14-32-31CHZM Pad Sec.32-T1N-R66W	MD Reference:	WELL @ 5047.0ft (Ensign Rig #134 - RKB - 13')
Site Error:	0.0ft	North Reference:	True
Reference Well:	SRC Eberle 14-32-31CHZM	Survey Calculation Method:	Minimum Curvature
Well Error:	0.0ft	Output errors are at	2.00 sigma
Reference Wellbore	Wellbore #1	Database:	landmark
Reference Design:	Plan #3 (3-14-14)	Offset TVD Reference:	Offset Datum

Offset Design		SRC Eberle 14-32-31CHZM Pad Sec.32-T1N-R66W - SRC Eberle B-32CHZ - Wellbore #1 - Plan #2 (3-										Offset Site Error:		0.0 ft
Survey Program: 0-MWD												Offset Well Error:		0.0 ft
Reference		Offset		Semi Major Axis			Distance							
Measured Depth	Vertical	Measured	Vertical	Reference	Offset	Highside	Offset Wellbore Centre		Between	Between	Minimum	Separation	Warning	
Depth (ft)	Depth (ft)	Depth (ft)	Depth (ft)	(ft)	(ft)	Toolface (°)	+N/-S (ft)	+E/-W (ft)	Centres (ft)	Ellipses (ft)	Separation (ft)	Factor		
5,100.0	5,015.8	5,120.4	5,056.0	20.4	17.1	-149.47	-306.2	507.7	356.6	326.4	30.17	11.820		
5,200.0	5,113.7	5,220.1	5,153.7	20.8	17.6	-148.57	-315.4	525.5	361.6	330.5	31.06	11.642		
5,300.0	5,211.7	5,319.8	5,251.4	21.3	18.0	-147.69	-324.5	543.4	366.7	334.7	31.96	11.474		
5,400.0	5,309.7	5,419.5	5,349.1	21.7	18.5	-146.83	-333.7	561.2	371.9	339.0	32.86	11.316		
5,500.0	5,407.6	5,519.2	5,446.7	22.2	18.9	-146.00	-342.8	579.1	377.2	343.4	33.77	11.168		
5,600.0	5,505.6	5,618.9	5,544.4	22.6	19.3	-145.19	-352.0	596.9	382.5	347.9	34.69	11.028		
5,700.0	5,603.5	5,718.7	5,642.1	23.1	19.8	-144.41	-361.1	614.8	388.0	352.4	35.61	10.896		
5,800.0	5,701.5	5,818.4	5,739.7	23.5	20.2	-143.64	-370.3	632.6	393.5	356.9	36.53	10.771		
5,900.0	5,799.5	5,918.1	5,837.4	24.0	20.7	-142.90	-379.4	650.5	399.0	361.6	37.45	10.654		
6,000.0	5,897.4	6,017.8	5,935.1	24.4	21.1	-142.18	-388.6	668.4	404.7	366.3	38.38	10.543		
6,100.0	5,995.4	6,117.5	6,032.8	24.9	21.6	-141.47	-397.7	686.2	410.4	371.1	39.31	10.439		
6,200.0	6,093.3	6,217.2	6,130.4	25.3	22.0	-140.79	-406.8	704.1	416.1	375.9	40.25	10.340		
6,300.0	6,191.3	6,316.6	6,227.8	25.8	22.5	-140.13	-416.0	721.9	422.0	380.8	41.18	10.247		
6,400.0	6,289.4	6,409.8	6,319.4	26.2	22.8	-139.71	-423.8	737.1	428.1	386.1	41.96	10.203		
6,500.0	6,388.1	6,500.0	6,408.5	26.5	23.0	-139.42	-430.0	749.3	433.3	390.7	42.55	10.182		
6,600.0	6,487.3	6,596.3	6,504.2	26.7	23.3	-139.17	-435.3	759.6	437.3	394.2	43.08	10.152		
6,700.0	6,586.9	6,689.7	6,597.2	26.9	23.5	-139.00	-439.0	766.8	440.2	396.8	43.50	10.121		
6,800.0	6,686.7	6,783.1	6,690.4	27.1	23.6	-138.89	-441.3	771.4	442.1	398.2	43.83	10.086		
6,900.0	6,786.7	6,876.5	6,783.8	27.2	23.8	-138.84	-442.3	773.2	442.7	398.6	44.07	10.045		
7,000.0	6,886.7	6,975.3	6,882.7	27.3	23.9	0.03	-442.3	773.2	442.7	401.0	41.76	10.603		
7,100.0	6,986.6	7,075.4	6,982.6	27.4	24.0	90.07	-442.3	771.0	442.7	398.2	44.55	9.937		
7,200.0	7,085.3	7,175.5	7,081.6	27.4	24.0	90.14	-442.3	756.1	442.7	398.2	44.53	9.942		
7,300.0	7,180.9	7,275.7	7,177.5	27.3	23.8	90.21	-442.3	727.5	442.7	398.4	44.29	9.996		
7,400.0	7,271.6	7,375.9	7,268.6	27.1	23.7	90.28	-442.3	685.9	442.7	398.8	43.90	10.085		
7,500.0	7,355.5	7,476.3	7,353.0	26.9	23.4	90.33	-442.3	631.8	442.7	399.3	43.46	10.187		
7,600.0	7,431.1	7,576.7	7,429.2	26.6	23.2	90.39	-442.3	566.5	442.7	399.6	43.09	10.274		
7,700.0	7,496.8	7,677.1	7,495.4	26.4	23.1	90.43	-442.3	491.1	442.7	399.8	42.96	10.307		
7,800.0	7,551.4	7,777.6	7,550.6	26.2	23.0	90.47	-442.3	407.2	442.7	399.5	43.20	10.248		
7,900.0	7,593.8	7,878.1	7,593.4	26.0	23.2	90.49	-442.3	316.4	442.7	398.8	43.96	10.072		
8,000.0	7,623.3	7,978.7	7,623.1	25.9	23.6	90.51	-442.3	220.4	442.7	397.4	45.29	9.776		
8,100.0	7,639.1	8,079.2	7,639.1	25.8	24.3	90.52	-442.3	121.2	442.7	395.5	47.19	9.382		
8,200.0	7,642.0	8,179.6	7,642.0	26.0	25.3	90.52	-442.3	20.9	442.7	393.2	49.58	8.930		
8,300.0	7,642.0	8,279.6	7,642.0	26.6	26.6	90.52	-442.3	-79.1	442.7	390.3	52.45	8.441		
8,400.0	7,642.0	8,379.6	7,642.0	27.9	28.1	90.52	-442.3	-179.1	442.7	387.0	55.73	7.945		
8,500.0	7,642.0	8,479.6	7,642.0	29.6	29.8	90.52	-442.3	-279.1	442.7	383.4	59.36	7.459		
8,600.0	7,642.0	8,579.6	7,642.0	31.5	31.8	90.52	-442.3	-379.1	442.7	379.5	63.27	6.997		
8,700.0	7,642.0	8,679.6	7,642.0	33.6	33.8	90.52	-442.3	-479.1	442.7	375.3	67.43	6.566		
8,800.0	7,642.0	8,779.6	7,642.0	35.8	36.0	90.52	-442.3	-579.1	442.7	371.0	71.79	6.168		
8,900.0	7,642.0	8,879.6	7,642.0	38.1	38.2	90.52	-442.3	-679.1	442.7	366.4	76.30	5.802		
9,000.0	7,642.0	8,979.6	7,642.0	40.5	40.5	90.52	-442.3	-779.1	442.7	361.8	80.96	5.469		
9,100.0	7,642.0	9,079.6	7,642.0	42.9	42.9	90.52	-442.3	-879.1	442.7	357.0	85.73	5.164		
9,200.0	7,642.0	9,179.6	7,642.0	45.4	45.3	90.52	-442.3	-979.1	442.7	352.1	90.59	4.887		
9,300.0	7,642.0	9,279.6	7,642.0	47.9	47.8	90.52	-442.3	-1,079.1	442.7	347.2	95.54	4.634		
9,400.0	7,642.0	9,379.6	7,642.0	50.4	50.3	90.52	-442.3	-1,179.1	442.7	342.2	100.56	4.403		
9,500.0	7,642.0	9,479.6	7,642.0	52.9	52.8	90.52	-442.3	-1,279.1	442.7	337.1	105.64	4.191		
9,600.0	7,642.0	9,579.6	7,642.0	55.5	55.4	90.52	-442.3	-1,379.1	442.7	332.0	110.76	3.997		
9,700.0	7,642.0	9,679.6	7,642.0	58.1	58.0	90.52	-442.3	-1,479.1	442.7	326.8	115.94	3.819		
9,800.0	7,642.0	9,779.6	7,642.0	60.7	60.6	90.52	-442.3	-1,579.1	442.7	321.6	121.15	3.655		
9,900.0	7,642.0	9,879.6	7,642.0	63.4	63.2	90.52	-442.3	-1,679.1	442.7	316.4	126.39	3.503		
10,000.0	7,642.0	9,979.6	7,642.0	66.0	65.8	90.52	-442.3	-1,779.1	442.7	311.1	131.67	3.363		

CC - Min centre to center distance or convergent point, SF - min separation factor, ES - min ellipse separation

Company:	Synergy Resources	Local Co-ordinate Reference:	Well SRC Eberle 14-32-31CHZM
Project:	SEC.32-T1N-R66W	TVD Reference:	WELL @ 5047.0ft (Ensign Rig #134 - RKB - 13')
Reference Site:	SRC Eberle 14-32-31CHZM Pad Sec.32-T1N-R66W	MD Reference:	WELL @ 5047.0ft (Ensign Rig #134 - RKB - 13')
Site Error:	0.0ft	North Reference:	True
Reference Well:	SRC Eberle 14-32-31CHZM	Survey Calculation Method:	Minimum Curvature
Well Error:	0.0ft	Output errors are at	2.00 sigma
Reference Wellbore	Wellbore #1	Database:	landmark
Reference Design:	Plan #3 (3-14-14)	Offset TVD Reference:	Offset Datum

Offset Design													Offset Site Error:	0.0 ft
Survey Program: 0-MWD													Offset Well Error:	0.0 ft
Reference		Offset		Semi Major Axis			Distance							
Measured Depth (ft)	Vertical Depth (ft)	Measured Depth (ft)	Vertical Depth (ft)	Reference (ft)	Offset (ft)	Highside Toolface (°)	Offset Wellbore Centre +N/-S (ft)	+E/-W (ft)	Between Centres (ft)	Between Ellipses (ft)	Minimum Separation (ft)	Separation Factor	Warning	
10,100.0	7,642.0	10,079.6	7,642.0	68.7	68.5	90.52	-442.3	-1,879.1	442.7	305.8	136.97	3.232		
10,200.0	7,642.0	10,179.6	7,642.0	71.3	71.1	90.52	-442.3	-1,979.1	442.7	300.5	142.29	3.112		
10,300.0	7,642.0	10,279.6	7,642.0	74.0	73.8	90.52	-442.3	-2,079.1	442.7	295.1	147.64	2.999		
10,400.0	7,642.0	10,379.6	7,642.0	76.7	76.5	90.52	-442.3	-2,179.1	442.7	289.7	153.00	2.894		
10,500.0	7,642.0	10,479.6	7,642.0	79.4	79.2	90.52	-442.3	-2,279.1	442.7	284.4	158.39	2.795		
10,600.0	7,642.0	10,579.6	7,642.0	82.1	81.9	90.52	-442.3	-2,379.1	442.7	279.0	163.78	2.703		
10,700.0	7,642.0	10,679.6	7,642.0	84.8	84.6	90.52	-442.3	-2,479.1	442.7	273.6	169.19	2.617		
10,800.0	7,642.0	10,779.6	7,642.0	87.5	87.3	90.52	-442.3	-2,579.1	442.7	268.1	174.62	2.536		
10,900.0	7,642.0	10,879.6	7,642.0	90.2	90.0	90.52	-442.3	-2,679.1	442.8	262.7	180.05	2.459		
11,000.0	7,642.0	10,979.6	7,642.0	92.9	92.7	90.52	-442.3	-2,779.1	442.8	257.3	185.50	2.387		
11,100.0	7,642.0	11,079.6	7,642.0	95.7	95.5	90.52	-442.3	-2,879.1	442.8	251.8	190.95	2.319		
11,200.0	7,642.0	11,179.6	7,642.0	98.4	98.2	90.52	-442.3	-2,979.1	442.8	246.3	196.41	2.254		
11,300.0	7,642.0	11,279.6	7,642.0	101.1	100.9	90.52	-442.3	-3,079.1	442.8	240.9	201.89	2.193		
11,400.0	7,642.0	11,379.6	7,642.0	103.9	103.7	90.52	-442.3	-3,179.1	442.8	235.4	207.36	2.135		
11,500.0	7,642.0	11,479.6	7,642.0	106.6	106.4	90.52	-442.3	-3,279.1	442.8	229.9	212.85	2.080		
11,600.0	7,642.0	11,579.6	7,642.0	109.4	109.1	90.52	-442.3	-3,379.1	442.8	224.4	218.34	2.028		
11,700.0	7,642.0	11,679.6	7,642.0	112.1	111.9	90.52	-442.3	-3,479.1	442.8	218.9	223.84	1.978		
11,800.0	7,642.0	11,779.6	7,642.0	114.9	114.6	90.52	-442.3	-3,579.1	442.8	213.4	229.34	1.931		
11,900.0	7,642.0	11,879.6	7,642.0	117.6	117.4	90.52	-442.3	-3,679.1	442.8	207.9	234.85	1.885		
12,000.0	7,642.0	11,979.6	7,642.0	120.4	120.2	90.52	-442.3	-3,779.1	442.8	202.4	240.36	1.842		
12,100.0	7,642.0	12,079.6	7,642.0	123.1	122.9	90.52	-442.3	-3,879.1	442.8	196.9	245.88	1.801		
12,200.0	7,642.0	12,179.6	7,642.0	125.9	125.7	90.52	-442.3	-3,979.1	442.8	191.4	251.40	1.761 SF		
12,300.0	7,642.0	12,190.2	7,642.0	128.7	126.0	90.52	-442.3	-3,989.6	451.7	197.2	254.45	1.775		
12,400.0	7,642.0	12,190.2	7,642.0	131.4	126.0	90.52	-442.3	-3,989.6	481.6	224.4	257.22	1.872		
12,500.0	7,642.0	12,190.2	7,642.0	134.2	126.0	90.52	-442.3	-3,989.6	529.0	269.0	259.98	2.035		
12,600.0	7,642.0	12,190.2	7,642.0	137.0	126.0	90.52	-442.3	-3,989.6	589.6	326.9	262.75	2.244		
12,700.0	7,642.0	12,190.2	7,642.0	139.7	126.0	90.52	-442.3	-3,989.6	660.0	394.5	265.52	2.486		
12,800.0	7,642.0	12,190.2	7,642.0	142.5	126.0	90.52	-442.3	-3,989.6	737.2	468.9	268.29	2.748		
12,900.0	7,642.0	12,190.2	7,642.0	145.3	126.0	90.52	-442.3	-3,989.6	819.4	548.3	271.07	3.023		
13,000.0	7,642.0	12,190.2	7,642.0	148.0	126.0	90.52	-442.3	-3,989.6	905.1	631.3	273.84	3.305		
13,100.0	7,642.0	12,190.2	7,642.0	150.8	126.0	90.52	-442.3	-3,989.6	993.5	716.9	276.61	3.592		

Company:	Synergy Resources	Local Co-ordinate Reference:	Well SRC Eberle 14-32-31CHZM
Project:	SEC.32-T1N-R66W	TVD Reference:	WELL @ 5047.0ft (Ensign Rig #134 - RKB - 13')
Reference Site:	SRC Eberle 14-32-31CHZM Pad Sec.32-T1N-R66W	MD Reference:	WELL @ 5047.0ft (Ensign Rig #134 - RKB - 13')
Site Error:	0.0ft	North Reference:	True
Reference Well:	SRC Eberle 14-32-31CHZM	Survey Calculation Method:	Minimum Curvature
Well Error:	0.0ft	Output errors are at	2.00 sigma
Reference Wellbore	Wellbore #1	Database:	landmark
Reference Design:	Plan #3 (3-14-14)	Offset TVD Reference:	Offset Datum

Offset Design		SRC Eberle 14-32-31CHZM Pad Sec.32-T1N-R66W - SRC Eberle B-32NHZ - Wellbore #1 - Plan #2 (3-										Offset Site Error:		0.0 ft		
Survey Program: 0-MWD														Offset Well Error:		0.0 ft
Reference		Offset		Semi Major Axis			Distance								Warning	
Measured Depth (ft)	Vertical Depth (ft)	Measured Depth (ft)	Vertical Depth (ft)	Reference (ft)	Offset (ft)	Highside Toolface (°)	Offset Wellbore Centre +N/-S (ft)	+E/-W (ft)	Between Centres (ft)	Between Ellipses (ft)	Minimum Separation (ft)	Separation Factor				
0.0	0.0	0.0	0.0	0.0	0.0	-89.81	0.4	-113.5	113.6							
100.0	100.0	95.0	95.0	0.1	0.1	-89.81	0.4	-113.5	113.5	113.2	0.22	517.711				
200.0	200.0	195.0	195.0	0.3	0.3	-89.81	0.4	-113.5	113.5	112.8	0.66	171.116	CC, ES			
300.0	300.0	295.0	295.0	0.5	0.6	131.65	0.4	-113.5	114.0	112.9	1.09	104.400				
400.0	400.0	395.0	395.0	0.7	0.8	132.60	0.4	-113.5	115.8	114.3	1.52	76.164				
500.0	499.9	494.9	494.9	1.0	1.0	134.13	0.4	-113.5	118.8	116.8	1.96	60.512				
600.0	599.7	594.7	594.7	1.2	1.2	136.14	0.4	-113.5	123.1	120.7	2.42	50.966				
700.0	699.4	694.4	694.4	1.5	1.4	138.51	0.4	-113.5	128.9	126.0	2.88	44.815				
800.0	798.9	793.9	793.9	1.7	1.7	141.13	0.4	-113.5	136.2	132.9	3.34	40.755				
900.0	898.3	893.3	893.3	2.0	1.9	143.88	0.4	-113.5	145.2	141.4	3.81	38.083				
1,000.0	997.4	992.4	992.4	2.3	2.1	146.64	0.4	-113.5	156.0	151.7	4.29	36.385				
1,100.0	1,096.3	1,091.3	1,091.3	2.7	2.3	149.33	0.4	-113.5	168.6	163.8	4.76	35.397				
1,200.0	1,194.9	1,189.9	1,189.9	3.0	2.6	151.89	0.4	-113.5	183.0	177.8	5.24	34.941				
1,300.0	1,293.3	1,288.3	1,288.3	3.4	2.8	154.28	0.4	-113.5	199.3	193.6	5.71	34.893				
1,400.0	1,391.3	1,386.3	1,386.3	3.8	3.0	156.49	0.4	-113.5	217.4	211.2	6.19	35.128				
1,500.0	1,489.2	1,487.7	1,487.7	4.3	3.2	158.54	0.2	-112.8	235.4	228.7	6.66	35.365				
1,600.0	1,587.2	1,590.3	1,590.3	4.7	3.4	160.41	-0.4	-110.4	251.9	244.8	7.11	35.456				
1,700.0	1,685.2	1,693.3	1,693.2	5.1	3.6	162.17	-1.5	-106.2	267.0	259.4	7.56	35.338				
1,800.0	1,783.1	1,796.8	1,796.5	5.6	3.8	163.86	-3.0	-100.1	280.6	272.6	8.01	35.034				
1,900.0	1,881.1	1,900.7	1,900.0	6.0	4.1	165.51	-5.0	-92.3	292.7	284.2	8.47	34.576				
2,000.0	1,979.0	2,004.8	2,003.7	6.4	4.3	167.17	-7.4	-82.5	303.4	294.4	8.93	33.986				
2,100.0	2,077.0	2,109.2	2,107.4	6.9	4.6	168.85	-10.3	-70.9	312.6	303.2	9.39	33.284				
2,200.0	2,175.0	2,213.8	2,211.0	7.3	4.8	170.58	-13.7	-57.5	320.4	310.5	9.86	32.484				
2,300.0	2,272.9	2,318.4	2,314.5	7.8	5.1	172.37	-17.5	-42.2	326.8	316.4	10.34	31.595				
2,400.0	2,370.9	2,423.1	2,417.6	8.2	5.4	174.24	-21.8	-25.1	331.9	321.0	10.84	30.631				
2,500.0	2,468.8	2,527.7	2,520.4	8.7	5.8	176.22	-26.6	-6.2	335.7	324.4	11.35	29.590				
2,600.0	2,566.8	2,630.7	2,621.3	9.1	6.1	178.28	-31.7	14.2	338.5	326.6	11.88	28.500				
2,700.0	2,664.8	2,729.9	2,718.3	9.6	6.5	-179.72	-36.7	34.2	341.3	328.8	12.42	27.473				
2,800.0	2,762.7	2,829.2	2,815.4	10.0	6.9	-177.76	-41.7	54.3	344.4	331.4	12.99	26.513				
2,900.0	2,860.7	2,928.4	2,912.5	10.5	7.3	-175.84	-46.8	74.3	348.0	334.4	13.59	25.617				
3,000.0	2,958.6	3,027.7	3,009.6	10.9	7.7	-173.96	-51.8	94.4	352.0	337.8	14.21	24.777				
3,100.0	3,056.6	3,126.9	3,106.6	11.3	8.1	-172.12	-56.8	114.4	356.3	341.5	14.85	23.992				
3,200.0	3,154.5	3,226.2	3,203.7	11.8	8.5	-170.33	-61.8	134.5	361.0	345.5	15.52	23.257				
3,300.0	3,252.5	3,325.4	3,300.8	12.2	8.9	-168.58	-66.9	154.5	366.1	349.9	16.22	22.570				
3,400.0	3,350.5	3,424.7	3,397.9	12.7	9.3	-166.89	-71.9	174.6	371.5	354.6	16.94	21.928				
3,500.0	3,448.4	3,523.9	3,494.9	13.1	9.7	-165.24	-76.9	194.6	377.2	359.5	17.69	21.329				
3,600.0	3,546.4	3,623.2	3,592.0	13.6	10.2	-163.64	-82.0	214.6	383.2	364.8	18.45	20.771				
3,700.0	3,644.3	3,722.4	3,689.1	14.1	10.6	-162.09	-87.0	234.7	389.5	370.3	19.23	20.251				
3,800.0	3,742.3	3,821.7	3,786.2	14.5	11.0	-160.59	-92.0	254.7	396.1	376.1	20.04	19.768				
3,900.0	3,840.3	3,920.9	3,883.2	15.0	11.4	-159.15	-97.1	274.8	403.0	382.1	20.86	19.319				
4,000.0	3,938.2	4,020.2	3,980.3	15.4	11.9	-157.75	-102.1	294.8	410.1	388.4	21.69	18.903				
4,100.0	4,036.2	4,119.4	4,077.4	15.9	12.3	-156.39	-107.1	314.9	417.4	394.9	22.54	18.516				
4,200.0	4,134.1	4,218.7	4,174.5	16.3	12.8	-155.09	-112.2	334.9	425.0	401.6	23.40	18.157				
4,300.0	4,232.1	4,317.9	4,271.5	16.8	13.2	-153.83	-117.2	355.0	432.7	408.5	24.28	17.825				
4,400.0	4,330.1	4,417.2	4,368.6	17.2	13.6	-152.62	-122.2	375.0	440.7	415.5	25.16	17.517				
4,500.0	4,428.0	4,516.4	4,465.7	17.7	14.1	-151.44	-127.2	395.1	448.9	422.8	26.05	17.231				
4,600.0	4,526.0	4,615.7	4,562.7	18.1	14.5	-150.32	-132.3	415.1	457.2	430.3	26.95	16.966				
4,700.0	4,623.9	4,714.9	4,659.8	18.6	15.0	-149.23	-137.3	435.2	465.7	437.9	27.85	16.720				
4,800.0	4,721.9	4,814.2	4,756.9	19.0	15.4	-148.18	-142.3	455.2	474.4	445.7	28.77	16.493				
4,900.0	4,819.9	4,913.4	4,854.0	19.5	15.9	-147.17	-147.4	475.3	483.3	453.6	29.68	16.281				
5,000.0	4,917.8	5,012.7	4,951.0	19.9	16.3	-146.19	-152.4	495.3	492.2	461.6	30.60	16.085				

CC - Min centre to center distance or convergent point, SF - min separation factor, ES - min ellipse separation

Company:	Synergy Resources	Local Co-ordinate Reference:	Well SRC Eberle 14-32-31CHZM
Project:	SEC.32-T1N-R66W	TVD Reference:	WELL @ 5047.0ft (Ensign Rig #134 - RKB - 13')
Reference Site:	SRC Eberle 14-32-31CHZM Pad Sec.32-T1N-R66W	MD Reference:	WELL @ 5047.0ft (Ensign Rig #134 - RKB - 13')
Site Error:	0.0ft	North Reference:	True
Reference Well:	SRC Eberle 14-32-31CHZM	Survey Calculation Method:	Minimum Curvature
Well Error:	0.0ft	Output errors are at	2.00 sigma
Reference Wellbore	Wellbore #1	Database:	landmark
Reference Design:	Plan #3 (3-14-14)	Offset TVD Reference:	Offset Datum

Offset Design		SRC Eberle 14-32-31CHZM Pad Sec.32-T1N-R66W - SRC Eberle B-32NHZ - Wellbore #1 - Plan #2 (3-										Offset Site Error:		0.0 ft
Survey Program: 0-MWD												Offset Well Error:		0.0 ft
Reference		Offset		Semi Major Axis			Distance							Warning
Measured Depth (ft)	Vertical Depth (ft)	Measured Depth (ft)	Vertical Depth (ft)	Reference (ft)	Offset (ft)	Highside Toolface (°)	Offset Wellbore Centre +N/-S (ft)	+E/-W (ft)	Between Centres (ft)	Between Ellipses (ft)	Minimum Separation (ft)	Separation Factor		
5,100.0	5,015.8	5,111.9	5,048.1	20.4	16.7	-145.25	-157.4	515.3	501.4	469.8	31.53	15.903		
5,200.0	5,113.7	5,211.2	5,145.2	20.8	17.2	-144.34	-162.5	535.4	510.6	478.2	32.45	15.733		
5,300.0	5,211.7	5,310.4	5,242.3	21.3	17.6	-143.47	-167.5	555.4	520.0	486.6	33.38	15.576		
5,400.0	5,309.7	5,409.7	5,339.3	21.7	18.1	-142.63	-172.5	575.5	529.5	495.2	34.32	15.429		
5,500.0	5,407.6	5,508.9	5,436.4	22.2	18.5	-141.81	-177.6	595.5	539.1	503.8	35.25	15.293		
5,600.0	5,505.6	5,608.2	5,533.5	22.6	19.0	-141.03	-182.6	615.6	548.8	512.6	36.18	15.166		
5,700.0	5,603.5	5,707.4	5,630.6	23.1	19.4	-140.27	-187.6	635.6	558.6	521.5	37.12	15.048		
5,800.0	5,701.5	5,806.7	5,727.6	23.5	19.9	-139.54	-192.7	655.7	568.5	530.4	38.06	14.938		
5,900.0	5,799.5	5,905.9	5,824.7	24.0	20.3	-138.83	-197.7	675.7	578.5	539.5	38.99	14.835		
6,000.0	5,897.4	6,005.2	5,921.8	24.4	20.8	-138.15	-202.7	695.8	588.5	548.6	39.93	14.739		
6,100.0	5,995.4	6,103.7	6,018.2	24.9	21.2	-137.49	-207.7	715.6	598.7	557.8	40.85	14.655		
6,200.0	6,093.3	6,200.0	6,112.7	25.3	21.5	-137.07	-212.1	733.1	609.4	567.8	41.61	14.645		
6,300.0	6,191.3	6,293.4	6,205.0	25.8	21.8	-136.95	-215.6	747.0	620.8	578.6	42.26	14.691		
6,400.0	6,289.4	6,388.2	6,299.1	26.2	22.0	-137.18	-218.4	758.2	632.4	589.6	42.81	14.773		
6,500.0	6,388.1	6,482.9	6,393.5	26.5	22.2	-137.51	-220.4	766.3	642.4	599.2	43.23	14.861		
6,600.0	6,487.3	6,577.7	6,488.1	26.7	22.4	-137.88	-221.7	771.4	650.5	607.0	43.55	14.935		
6,700.0	6,586.9	6,672.4	6,582.8	26.9	22.5	-138.29	-222.2	773.5	656.8	613.0	43.80	14.997		
6,800.0	6,686.7	6,771.3	6,681.7	27.1	22.7	-138.67	-222.2	773.5	661.1	617.1	43.99	15.026		
6,900.0	6,786.7	6,871.3	6,781.7	27.2	22.8	-138.83	-222.2	773.4	662.7	618.6	44.19	14.997		
7,000.0	6,886.7	6,970.4	6,880.3	27.3	22.8	-0.75	-222.2	764.3	662.8	622.6	40.26	16.463		
7,100.0	6,986.6	7,065.9	6,973.2	27.4	22.8	87.57	-222.2	742.8	663.4	619.6	43.79	15.149		
7,200.0	7,085.3	7,158.8	7,060.1	27.4	22.6	85.85	-222.2	710.3	664.6	621.4	43.21	15.382		
7,300.0	7,180.9	7,250.0	7,140.7	27.3	22.4	84.21	-222.2	667.6	666.3	623.8	42.52	15.671		
7,400.0	7,271.6	7,338.3	7,212.9	27.1	22.2	82.71	-222.2	616.8	668.3	626.5	41.82	15.979		
7,500.0	7,355.5	7,425.5	7,277.6	26.9	22.1	81.35	-222.2	558.4	670.6	629.4	41.23	16.265		
7,600.0	7,431.1	7,511.4	7,333.8	26.6	22.0	80.13	-222.2	493.6	672.9	632.0	40.85	16.474		
7,700.0	7,496.8	7,596.2	7,381.4	26.4	22.0	79.09	-222.2	423.4	675.1	634.3	40.80	16.549		
7,800.0	7,551.4	7,680.0	7,419.9	26.2	22.3	78.24	-222.2	349.0	677.1	635.9	41.19	16.436		
7,900.0	7,593.8	7,763.2	7,449.3	26.0	22.6	77.58	-222.2	271.3	678.7	636.6	42.10	16.121		
8,000.0	7,623.3	7,850.0	7,470.2	25.9	23.3	77.11	-222.2	187.1	679.9	636.3	43.56	15.607		
8,100.0	7,639.1	7,928.1	7,480.1	25.8	24.0	76.88	-222.2	109.6	680.5	635.1	45.46	14.969		
8,200.0	7,642.0	8,016.8	7,482.0	26.0	25.0	76.84	-222.2	20.9	680.7	632.8	47.81	14.237		
8,300.0	7,642.0	8,116.8	7,482.0	26.6	26.4	76.84	-222.2	-79.1	680.7	630.1	50.60	13.452		
8,400.0	7,642.0	8,216.8	7,482.0	27.9	28.0	76.84	-222.2	-179.1	680.7	626.9	53.80	12.651		
8,500.0	7,642.0	8,316.8	7,482.0	29.6	29.8	76.84	-222.2	-279.1	680.7	623.3	57.35	11.869		
8,600.0	7,642.0	8,416.8	7,482.0	31.5	31.8	76.84	-222.2	-379.1	680.7	619.5	61.18	11.125		
8,700.0	7,642.0	8,516.8	7,482.0	33.6	33.8	76.84	-222.2	-479.1	680.7	615.4	65.25	10.432		
8,800.0	7,642.0	8,616.8	7,482.0	35.8	36.0	76.84	-222.2	-579.1	680.7	611.1	69.51	9.792		
8,900.0	7,642.0	8,716.8	7,482.0	38.1	38.2	76.84	-222.2	-679.1	680.7	606.7	73.93	9.207		
9,000.0	7,642.0	8,816.8	7,482.0	40.5	40.6	76.84	-222.2	-779.1	680.7	602.2	78.48	8.673		
9,100.0	7,642.0	8,916.8	7,482.0	42.9	42.9	76.84	-222.2	-879.1	680.7	597.5	83.15	8.186		
9,200.0	7,642.0	9,016.8	7,482.0	45.4	45.4	76.84	-222.2	-979.1	680.7	592.7	87.91	7.743		
9,300.0	7,642.0	9,116.8	7,482.0	47.9	47.8	76.84	-222.2	-1,079.1	680.7	587.9	92.74	7.339		
9,400.0	7,642.0	9,216.8	7,482.0	50.4	50.3	76.84	-222.2	-1,179.1	680.7	583.0	97.65	6.970		
9,500.0	7,642.0	9,316.8	7,482.0	52.9	52.9	76.84	-222.2	-1,279.1	680.7	578.0	102.61	6.633		
9,600.0	7,642.0	9,416.8	7,482.0	55.5	55.4	76.84	-222.2	-1,379.1	680.6	573.0	107.62	6.324		
9,700.0	7,642.0	9,516.8	7,482.0	58.1	58.0	76.84	-222.2	-1,479.1	680.6	568.0	112.68	6.041		
9,800.0	7,642.0	9,616.8	7,482.0	60.7	60.6	76.84	-222.2	-1,579.1	680.6	562.9	117.77	5.780		
9,900.0	7,642.0	9,716.8	7,482.0	63.4	63.2	76.84	-222.2	-1,679.1	680.6	557.8	122.89	5.538		
10,000.0	7,642.0	9,816.8	7,482.0	66.0	65.9	76.84	-222.2	-1,779.1	680.6	552.6	128.05	5.316		

CC - Min centre to center distance or convergent point, SF - min separation factor, ES - min ellipse separation

Company:	Synergy Resources	Local Co-ordinate Reference:	Well SRC Eberle 14-32-31CHZM
Project:	SEC.32-T1N-R66W	TVD Reference:	WELL @ 5047.0ft (Ensign Rig #134 - RKB - 13')
Reference Site:	SRC Eberle 14-32-31CHZM Pad Sec.32-T1N-R66W	MD Reference:	WELL @ 5047.0ft (Ensign Rig #134 - RKB - 13')
Site Error:	0.0ft	North Reference:	True
Reference Well:	SRC Eberle 14-32-31CHZM	Survey Calculation Method:	Minimum Curvature
Well Error:	0.0ft	Output errors are at	2.00 sigma
Reference Wellbore	Wellbore #1	Database:	landmark
Reference Design:	Plan #3 (3-14-14)	Offset TVD Reference:	Offset Datum

Offset Design		SRC Eberle 14-32-31CHZM Pad Sec.32-T1N-R66W - SRC Eberle B-32NHZ - Wellbore #1 - Plan #2 (3-										Offset Site Error:	0.0 ft
Survey Program: 0-MWD												Offset Well Error:	0.0 ft
Reference		Offset		Semi Major Axis		Distance							Warning
Measured Depth (ft)	Vertical Depth (ft)	Measured Depth (ft)	Vertical Depth (ft)	Reference (ft)	Offset (ft)	Highside Toolface (°)	Offset Wellbore Centre +N/-S (ft)	+E/-W (ft)	Between Centres (ft)	Between Ellipses (ft)	Minimum Separation (ft)	Separation Factor	
10,100.0	7,642.0	9,916.8	7,482.0	68.7	68.5	76.84	-222.2	-1,879.1	680.6	547.4	133.23	5.109	
10,200.0	7,642.0	10,016.8	7,482.0	71.3	71.2	76.84	-222.2	-1,979.1	680.6	542.2	138.43	4.917	
10,300.0	7,642.0	10,116.8	7,482.0	74.0	73.9	76.84	-222.2	-2,079.1	680.6	537.0	143.65	4.738	
10,400.0	7,642.0	10,216.8	7,482.0	76.7	76.5	76.84	-222.2	-2,179.1	680.6	531.8	148.89	4.571	
10,500.0	7,642.0	10,316.8	7,482.0	79.4	79.2	76.84	-222.2	-2,279.1	680.6	526.5	154.15	4.415	
10,600.0	7,642.0	10,416.8	7,482.0	82.1	81.9	76.84	-222.3	-2,379.1	680.6	521.2	159.42	4.269	
10,700.0	7,642.0	10,516.8	7,482.0	84.8	84.6	76.84	-222.3	-2,479.1	680.6	515.9	164.71	4.132	
10,800.0	7,642.0	10,616.8	7,482.0	87.5	87.3	76.84	-222.3	-2,579.1	680.6	510.6	170.00	4.004	
10,900.0	7,642.0	10,716.8	7,482.0	90.2	90.1	76.84	-222.3	-2,679.1	680.6	505.3	175.31	3.883	
11,000.0	7,642.0	10,816.8	7,482.0	92.9	92.8	76.84	-222.3	-2,779.1	680.6	500.0	180.63	3.768	
11,100.0	7,642.0	10,916.8	7,482.0	95.7	95.5	76.84	-222.3	-2,879.1	680.6	494.7	185.95	3.660	
11,200.0	7,642.0	11,016.8	7,482.0	98.4	98.2	76.84	-222.3	-2,979.1	680.6	489.4	191.29	3.558	
11,300.0	7,642.0	11,116.8	7,482.0	101.1	101.0	76.84	-222.3	-3,079.1	680.6	484.0	196.63	3.462	
11,400.0	7,642.0	11,216.8	7,482.0	103.9	103.7	76.84	-222.3	-3,179.1	680.6	478.7	201.98	3.370	
11,500.0	7,642.0	11,316.8	7,482.0	106.6	106.4	76.84	-222.3	-3,279.1	680.6	473.3	207.34	3.283	
11,600.0	7,642.0	11,416.8	7,482.0	109.4	109.2	76.84	-222.3	-3,379.1	680.6	467.9	212.70	3.200	
11,700.0	7,642.0	11,516.8	7,482.0	112.1	111.9	76.84	-222.3	-3,479.1	680.6	462.6	218.07	3.121	
11,800.0	7,642.0	11,616.8	7,482.0	114.9	114.7	76.84	-222.3	-3,579.1	680.6	457.2	223.44	3.046	
11,900.0	7,642.0	11,716.8	7,482.0	117.6	117.4	76.84	-222.3	-3,679.1	680.6	451.8	228.82	2.975	
12,000.0	7,642.0	11,816.8	7,482.0	120.4	120.2	76.84	-222.3	-3,779.1	680.6	446.4	234.20	2.906	
12,100.0	7,642.0	11,916.8	7,482.0	123.1	123.0	76.84	-222.3	-3,879.1	680.6	441.1	239.59	2.841	
12,200.0	7,642.0	12,016.8	7,482.0	125.9	125.7	76.84	-222.3	-3,979.1	680.6	435.7	244.98	2.778	
12,205.0	7,642.0	12,021.8	7,482.0	126.0	125.9	76.84	-222.3	-3,984.1	680.6	435.4	245.25	2.775	
12,300.0	7,642.0	12,027.4	7,482.0	128.7	126.0	76.84	-222.3	-3,989.6	686.5	438.5	247.96	2.769 SF	
12,400.0	7,642.0	12,027.4	7,482.0	131.4	126.0	76.84	-222.3	-3,989.6	706.5	455.9	250.66	2.819	
12,500.0	7,642.0	12,027.4	7,482.0	134.2	126.0	76.84	-222.3	-3,989.6	739.6	486.3	253.36	2.919	
12,600.0	7,642.0	12,027.4	7,482.0	137.0	126.0	76.84	-222.3	-3,989.6	784.2	528.1	256.06	3.062	
12,700.0	7,642.0	12,027.4	7,482.0	139.7	126.0	76.84	-222.3	-3,989.6	838.4	579.6	258.77	3.240	
12,800.0	7,642.0	12,027.4	7,482.0	142.5	126.0	76.84	-222.3	-3,989.6	900.4	638.9	261.47	3.444	
12,900.0	7,642.0	12,027.4	7,482.0	145.3	126.0	76.84	-222.3	-3,989.6	968.8	704.7	264.18	3.667	

Company:	Synergy Resources	Local Co-ordinate Reference:	Well SRC Eberle 14-32-31CHZM
Project:	SEC.32-T1N-R66W	TVD Reference:	WELL @ 5047.0ft (Ensign Rig #134 - RKB - 13')
Reference Site:	SRC Eberle 14-32-31CHZM Pad Sec.32-T1N-R66W	MD Reference:	WELL @ 5047.0ft (Ensign Rig #134 - RKB - 13')
Site Error:	0.0ft	North Reference:	True
Reference Well:	SRC Eberle 14-32-31CHZM	Survey Calculation Method:	Minimum Curvature
Well Error:	0.0ft	Output errors are at	2.00 sigma
Reference Wellbore	Wellbore #1	Database:	landmark
Reference Design:	Plan #3 (3-14-14)	Offset TVD Reference:	Offset Datum

Offset Design		SRC Eberle 14-32-31CHZM Pad Sec.32-T1N-R66W - SRC Eberle P-32CHZ - Wellbore #1 - Plan #2 (3-										Offset Site Error:		0.0 ft		
Survey Program: 0-MWD														Offset Well Error:		0.0 ft
Reference		Offset		Semi Major Axis			Distance								Warning	
Measured Depth (ft)	Vertical Depth (ft)	Measured Depth (ft)	Vertical Depth (ft)	Reference (ft)	Offset (ft)	Highside Toolface (°)	Offset Wellbore Centre +N/-S (ft)	+E/-W (ft)	Between Centres (ft)	Between Ellipses (ft)	Minimum Separation (ft)	Separation Factor				
0.0	0.0	0.0	0.0	0.0	0.0	-89.73	0.3	-68.1	68.1							
100.0	100.0	97.0	97.0	0.1	0.1	-89.73	0.3	-68.1	68.1	67.9	0.22	307.481	CC, ES			
200.0	200.0	197.0	197.0	0.3	0.3	-89.73	0.3	-68.1	68.1	67.4	0.67	101.979				
300.0	300.0	297.0	297.0	0.5	0.6	131.94	0.3	-68.1	68.7	67.6	1.10	62.596				
400.0	400.0	397.0	397.0	0.7	0.8	133.52	0.3	-68.1	70.4	68.9	1.52	46.191				
500.0	499.9	496.9	496.9	1.0	1.0	135.96	0.3	-68.1	73.5	71.5	1.97	37.361				
600.0	599.7	596.7	596.7	1.2	1.2	139.05	0.3	-68.1	78.0	75.6	2.42	32.247				
700.0	699.4	696.4	696.4	1.5	1.5	142.51	0.3	-68.1	84.1	81.2	2.88	29.229				
800.0	798.9	795.9	795.9	1.7	1.7	146.10	0.3	-68.1	91.9	88.6	3.34	27.521				
900.0	898.3	895.3	895.3	2.0	1.9	149.61	0.3	-68.1	101.5	97.7	3.80	26.689				
1,000.0	997.4	994.4	994.4	2.3	2.1	152.90	0.3	-68.1	113.0	108.7	4.27	26.471				
1,100.0	1,096.3	1,095.2	1,095.2	2.7	2.3	156.11	0.3	-67.3	125.6	120.9	4.72	26.616				
1,200.0	1,194.9	1,196.2	1,196.1	3.0	2.5	159.32	0.3	-64.7	138.7	133.5	5.16	26.887				
1,300.0	1,293.3	1,297.1	1,297.0	3.4	2.8	162.53	0.3	-60.4	152.3	146.7	5.60	27.201				
1,400.0	1,391.3	1,398.1	1,397.8	3.8	3.0	165.70	0.3	-54.2	166.3	160.3	6.04	27.523				
1,500.0	1,489.2	1,499.3	1,498.7	4.3	3.2	168.76	0.3	-46.3	179.7	173.2	6.50	27.656				
1,600.0	1,587.2	1,600.6	1,599.5	4.7	3.4	171.73	0.2	-36.6	192.1	185.1	6.96	27.606				
1,700.0	1,685.2	1,702.1	1,700.3	5.1	3.7	174.67	0.2	-25.1	203.7	196.3	7.43	27.401				
1,800.0	1,783.1	1,803.6	1,800.9	5.6	4.0	177.64	0.2	-11.8	214.5	206.6	7.93	27.059				
1,900.0	1,881.1	1,905.0	1,901.3	6.0	4.3	-179.35	0.1	3.3	224.7	216.3	8.45	26.598				
2,000.0	1,979.0	2,004.7	1,999.6	6.4	4.6	-176.40	0.1	19.4	234.6	225.6	9.00	26.078				
2,100.0	2,077.0	2,103.5	2,097.1	6.9	4.9	-173.70	0.0	35.5	245.0	235.4	9.57	25.604				
2,200.0	2,175.0	2,202.3	2,194.6	7.3	5.2	-171.22	0.0	51.6	255.9	245.7	10.16	25.172				
2,300.0	2,272.9	2,301.1	2,292.1	7.8	5.6	-168.94	-0.1	67.7	267.2	256.4	10.78	24.777				
2,400.0	2,370.9	2,399.9	2,389.6	8.2	5.9	-166.85	-0.1	83.8	278.9	267.5	11.42	24.416				
2,500.0	2,468.8	2,498.7	2,487.1	8.7	6.2	-164.93	-0.2	99.8	291.0	278.9	12.08	24.086				
2,600.0	2,566.8	2,597.5	2,584.6	9.1	6.6	-163.16	-0.2	115.9	303.3	290.6	12.75	23.786				
2,700.0	2,664.8	2,696.4	2,682.0	9.6	6.9	-161.53	-0.3	132.0	316.0	302.5	13.44	23.512				
2,800.0	2,762.7	2,795.2	2,779.5	10.0	7.3	-160.03	-0.3	148.1	328.8	314.7	14.13	23.263				
2,900.0	2,860.7	2,894.0	2,877.0	10.5	7.6	-158.64	-0.4	164.2	341.9	327.0	14.84	23.036				
3,000.0	2,958.6	2,992.8	2,974.5	10.9	8.0	-157.35	-0.4	180.3	355.1	339.6	15.55	22.830				
3,100.0	3,056.6	3,091.6	3,072.0	11.3	8.4	-156.16	-0.5	196.4	368.5	352.3	16.28	22.642				
3,200.0	3,154.5	3,190.4	3,169.5	11.8	8.7	-155.05	-0.5	212.5	382.1	365.1	17.00	22.471				
3,300.0	3,252.5	3,289.2	3,267.0	12.2	9.1	-154.01	-0.6	228.6	395.8	378.0	17.74	22.315				
3,400.0	3,350.5	3,388.0	3,364.5	12.7	9.4	-153.05	-0.6	244.7	409.6	391.1	18.47	22.172				
3,500.0	3,448.4	3,486.9	3,462.0	13.1	9.8	-152.14	-0.7	260.8	423.5	404.3	19.21	22.042				
3,600.0	3,546.4	3,585.7	3,559.5	13.6	10.2	-151.30	-0.7	276.8	437.5	417.6	19.96	21.923				
3,700.0	3,644.3	3,684.5	3,657.0	14.1	10.5	-150.50	-0.8	292.9	451.6	430.9	20.70	21.813				
3,800.0	3,742.3	3,783.3	3,754.5	14.5	10.9	-149.76	-0.8	309.0	465.8	444.4	21.45	21.713				
3,900.0	3,840.3	3,882.1	3,852.0	15.0	11.3	-149.06	-0.9	325.1	480.1	457.9	22.20	21.620				
4,000.0	3,938.2	3,980.9	3,949.5	15.4	11.6	-148.40	-0.9	341.2	494.4	471.4	22.96	21.535				
4,100.0	4,036.2	4,079.7	4,047.0	15.9	12.0	-147.77	-0.9	357.3	508.8	485.1	23.71	21.456				
4,200.0	4,134.1	4,178.5	4,144.4	16.3	12.4	-147.18	-1.0	373.4	523.2	498.7	24.47	21.384				
4,300.0	4,232.1	4,277.4	4,241.9	16.8	12.8	-146.63	-1.0	389.5	537.7	512.5	25.22	21.316				
4,400.0	4,330.1	4,376.2	4,339.4	17.2	13.1	-146.10	-1.1	405.6	552.2	526.2	25.98	21.254				
4,500.0	4,428.0	4,475.0	4,436.9	17.7	13.5	-145.60	-1.1	421.7	566.8	540.1	26.74	21.196				
4,600.0	4,526.0	4,573.8	4,534.4	18.1	13.9	-145.12	-1.2	437.8	581.4	553.9	27.50	21.142				
4,700.0	4,623.9	4,672.6	4,631.9	18.6	14.2	-144.67	-1.2	453.8	596.1	567.8	28.26	21.092				
4,800.0	4,721.9	4,771.4	4,729.4	19.0	14.6	-144.24	-1.3	469.9	610.8	581.8	29.02	21.045				
4,900.0	4,819.9	4,870.2	4,826.9	19.5	15.0	-143.82	-1.3	486.0	625.5	595.7	29.78	21.001				
5,000.0	4,917.8	4,969.0	4,924.4	19.9	15.4	-143.43	-1.4	502.1	640.3	609.7	30.55	20.961				

CC - Min centre to center distance or convergent point, SF - min separation factor, ES - min ellipse separation

Company:	Synergy Resources	Local Co-ordinate Reference:	Well SRC Eberle 14-32-31CHZM
Project:	SEC.32-T1N-R66W	TVD Reference:	WELL @ 5047.0ft (Ensign Rig #134 - RKB - 13')
Reference Site:	SRC Eberle 14-32-31CHZM Pad Sec.32-T1N-R66W	MD Reference:	WELL @ 5047.0ft (Ensign Rig #134 - RKB - 13')
Site Error:	0.0ft	North Reference:	True
Reference Well:	SRC Eberle 14-32-31CHZM	Survey Calculation Method:	Minimum Curvature
Well Error:	0.0ft	Output errors are at	2.00 sigma
Reference Wellbore	Wellbore #1	Database:	landmark
Reference Design:	Plan #3 (3-14-14)	Offset TVD Reference:	Offset Datum

Offset Design		SRC Eberle 14-32-31CHZM Pad Sec.32-T1N-R66W - SRC Eberle P-32CHZ - Wellbore #1 - Plan #2 (3-										Offset Site Error:		0.0 ft
Survey Program: 0-MWD												Offset Well Error:		0.0 ft
Reference		Offset		Semi Major Axis			Distance							Warning
Measured Depth (ft)	Vertical Depth (ft)	Measured Depth (ft)	Vertical Depth (ft)	Reference (ft)	Offset (ft)	Highside Toolface (°)	Offset Wellbore Centre		Between Centres (ft)	Between Ellipses (ft)	Minimum Separation (ft)	Separation Factor		
							+N/-S (ft)	+E/-W (ft)						
5,100.0	5,015.8	5,067.9	5,021.9	20.4	15.7	-143.06	-1.4	518.2	655.1	623.7	31.31	20.922		
5,200.0	5,113.7	5,166.7	5,119.4	20.8	16.1	-142.70	-1.5	534.3	669.9	637.8	32.07	20.887		
5,300.0	5,211.7	5,265.5	5,216.9	21.3	16.5	-142.36	-1.5	550.4	684.7	651.9	32.83	20.853		
5,400.0	5,309.7	5,364.3	5,314.4	21.7	16.9	-142.03	-1.6	566.5	699.6	666.0	33.60	20.821		
5,500.0	5,407.6	5,463.1	5,411.9	22.2	17.2	-141.72	-1.6	582.6	714.4	680.1	34.36	20.792		
5,600.0	5,505.6	5,561.9	5,509.4	22.6	17.6	-141.41	-1.7	598.7	729.3	694.2	35.13	20.764		
5,700.0	5,603.5	5,660.7	5,606.8	23.1	18.0	-141.12	-1.7	614.8	744.3	708.4	35.89	20.737		
5,800.0	5,701.5	5,759.5	5,704.3	23.5	18.4	-140.85	-1.8	630.8	759.2	722.5	36.65	20.712		
5,900.0	5,799.5	5,858.4	5,801.8	24.0	18.7	-140.58	-1.8	646.9	774.1	736.7	37.42	20.689		
6,000.0	5,897.4	5,957.2	5,899.3	24.4	19.1	-140.32	-1.9	663.0	789.1	750.9	38.18	20.667		
6,100.0	5,995.4	6,056.0	5,996.8	24.9	19.5	-140.07	-1.9	679.1	804.1	765.1	38.95	20.646		
6,200.0	6,093.3	6,154.8	6,094.3	25.3	19.9	-139.84	-2.0	695.2	819.1	779.4	39.71	20.626		
6,300.0	6,191.3	6,253.6	6,191.8	25.8	20.2	-139.61	-2.0	711.3	834.1	793.6	40.48	20.607		
6,400.0	6,289.4	6,352.5	6,289.4	26.2	20.6	-139.47	-2.0	727.4	848.6	807.3	41.24	20.575		
6,500.0	6,388.1	6,451.3	6,387.0	26.5	20.9	-139.27	-2.1	743.0	860.6	818.7	41.90	20.541		
6,600.0	6,487.3	6,550.4	6,485.3	26.7	21.2	-139.10	-2.1	755.6	870.0	827.6	42.43	20.505		
6,700.0	6,586.9	6,649.9	6,584.3	26.9	21.4	-138.98	-2.2	764.8	876.9	834.0	42.87	20.452		
6,800.0	6,686.7	6,749.6	6,683.8	27.1	21.6	-138.90	-2.2	770.6	881.1	837.9	43.23	20.383		
6,900.0	6,786.7	6,849.5	6,783.7	27.2	21.7	-138.87	-2.2	772.9	882.8	839.3	43.50	20.296		
7,000.0	6,886.7	6,949.5	6,883.7	27.3	21.9	0.00	-2.2	772.9	882.8	843.2	39.60	22.296		
7,056.8	6,943.4	7,006.2	6,940.4	27.3	21.9	90.07	-2.2	772.8	882.8	838.9	43.92	20.102		
7,100.0	6,986.6	7,049.5	6,983.6	27.4	22.0	90.01	-2.2	770.6	882.8	838.8	43.98	20.072		
7,200.0	7,085.3	7,149.5	7,082.4	27.4	21.9	90.04	-2.2	755.6	882.8	838.9	43.95	20.088		
7,300.0	7,180.9	7,249.6	7,178.3	27.3	21.8	90.06	-2.2	726.9	882.8	839.1	43.70	20.202		
7,400.0	7,271.6	7,349.8	7,269.3	27.1	21.6	90.09	-2.2	685.2	882.8	839.5	43.30	20.388		
7,500.0	7,355.5	7,450.0	7,353.6	26.9	21.4	90.11	-2.2	631.2	882.8	840.0	42.85	20.602		
7,600.0	7,431.1	7,550.3	7,429.5	26.6	21.2	90.13	-2.2	565.8	882.8	840.3	42.48	20.783		
7,700.0	7,496.8	7,650.6	7,495.7	26.4	21.1	90.15	-2.2	490.5	882.8	840.5	42.33	20.854		
7,800.0	7,551.4	7,750.9	7,550.7	26.2	21.2	90.17	-2.2	406.7	882.8	840.2	42.57	20.736		
7,900.0	7,593.8	7,851.3	7,593.4	26.0	21.6	90.18	-2.2	316.0	882.8	839.5	43.33	20.373		
8,000.0	7,623.3	7,951.7	7,623.1	25.9	22.3	90.19	-2.2	220.2	882.8	838.1	44.68	19.760		
8,100.0	7,639.1	8,052.1	7,639.1	25.8	23.2	90.19	-2.2	121.1	882.8	836.2	46.59	18.947		
8,200.0	7,642.0	8,152.4	7,642.0	26.0	24.4	90.19	-2.2	20.9	882.8	833.8	49.02	18.009		
8,300.0	7,642.0	8,252.4	7,642.0	26.6	25.9	90.19	-2.2	-79.1	882.8	830.9	51.91	17.008		
8,400.0	7,642.0	8,352.4	7,642.0	27.9	27.5	90.19	-2.2	-179.1	882.8	827.6	55.20	15.992		
8,500.0	7,642.0	8,452.4	7,642.0	29.6	29.3	90.19	-2.2	-279.1	882.8	824.0	58.85	15.001		
8,600.0	7,642.0	8,552.4	7,642.0	31.5	31.3	90.19	-2.2	-379.1	882.8	820.0	62.79	14.060		
8,700.0	7,642.0	8,652.4	7,642.0	33.6	33.4	90.19	-2.2	-479.1	882.8	815.9	66.97	13.183		
8,800.0	7,642.0	8,752.4	7,642.0	35.8	35.5	90.19	-2.2	-579.1	882.8	811.5	71.34	12.375		
8,900.0	7,642.0	8,852.4	7,642.0	38.1	37.8	90.19	-2.2	-679.1	882.8	806.9	75.88	11.635		
9,000.0	7,642.0	8,952.4	7,642.0	40.5	40.1	90.19	-2.2	-779.1	882.8	802.3	80.55	10.960		
9,100.0	7,642.0	9,052.4	7,642.0	42.9	42.5	90.19	-2.2	-879.1	882.8	797.5	85.33	10.346		
9,200.0	7,642.0	9,152.4	7,642.0	45.4	45.0	90.19	-2.2	-979.1	882.8	792.6	90.21	9.786		
9,300.0	7,642.0	9,252.4	7,642.0	47.9	47.4	90.19	-2.2	-1,079.1	882.8	787.6	95.17	9.276		
9,400.0	7,642.0	9,352.4	7,642.0	50.4	50.0	90.19	-2.2	-1,179.1	882.8	782.6	100.20	8.810		
9,500.0	7,642.0	9,452.4	7,642.0	52.9	52.5	90.19	-2.2	-1,279.1	882.8	777.5	105.29	8.385		
9,600.0	7,642.0	9,552.4	7,642.0	55.5	55.1	90.19	-2.2	-1,379.1	882.8	772.4	110.43	7.995		
9,700.0	7,642.0	9,652.4	7,642.0	58.1	57.7	90.19	-2.2	-1,479.1	882.8	767.2	115.61	7.636		
9,800.0	7,642.0	9,752.4	7,642.0	60.7	60.3	90.19	-2.2	-1,579.1	882.8	762.0	120.83	7.306		
9,900.0	7,642.0	9,852.4	7,642.0	63.4	62.9	90.19	-2.2	-1,679.1	882.8	756.7	126.08	7.002		

CC - Min centre to center distance or convergent point, SF - min separation factor, ES - min ellipse separation

Company:	Synergy Resources	Local Co-ordinate Reference:	Well SRC Eberle 14-32-31CHZM
Project:	SEC.32-T1N-R66W	TVD Reference:	WELL @ 5047.0ft (Ensign Rig #134 - RKB - 13')
Reference Site:	SRC Eberle 14-32-31CHZM Pad Sec.32-T1N-R66W	MD Reference:	WELL @ 5047.0ft (Ensign Rig #134 - RKB - 13')
Site Error:	0.0ft	North Reference:	True
Reference Well:	SRC Eberle 14-32-31CHZM	Survey Calculation Method:	Minimum Curvature
Well Error:	0.0ft	Output errors are at	2.00 sigma
Reference Wellbore	Wellbore #1	Database:	landmark
Reference Design:	Plan #3 (3-14-14)	Offset TVD Reference:	Offset Datum

Offset Design SRC Eberle 14-32-31CHZM Pad Sec.32-T1N-R66W - SRC Eberle P-32CHZ - Wellbore #1 - Plan #2 (3-													Offset Site Error:	0.0 ft
Survey Program: 0-MWD													Offset Well Error:	0.0 ft
Reference		Offset		Semi Major Axis			Distance							Warning
Measured Depth (ft)	Vertical Depth (ft)	Measured Depth (ft)	Vertical Depth (ft)	Reference (ft)	Offset (ft)	Highside Toolface (°)	Offset Wellbore Centre +N/-S (ft)	+E/-W (ft)	Between Centres (ft)	Between Ellipses (ft)	Minimum Separation (ft)	Separation Factor		
10,000.0	7,642.0	9,952.4	7,642.0	66.0	65.5	90.19	-2.2	-1,779.1	882.8	751.4	131.37	6.720		
10,100.0	7,642.0	10,052.4	7,642.0	68.7	68.2	90.19	-2.2	-1,879.1	882.8	746.1	136.67	6.459		
10,200.0	7,642.0	10,152.4	7,642.0	71.3	70.9	90.19	-2.2	-1,979.1	882.8	740.8	142.01	6.217		
10,300.0	7,642.0	10,252.4	7,642.0	74.0	73.5	90.19	-2.2	-2,079.1	882.8	735.5	147.36	5.991		
10,400.0	7,642.0	10,352.4	7,642.0	76.7	76.2	90.19	-2.2	-2,179.1	882.8	730.1	152.73	5.780		
10,500.0	7,642.0	10,452.4	7,642.0	79.4	78.9	90.19	-2.2	-2,279.1	882.8	724.7	158.12	5.583		
10,600.0	7,642.0	10,552.4	7,642.0	82.1	81.6	90.19	-2.2	-2,379.1	882.8	719.3	163.52	5.399		
10,700.0	7,642.0	10,652.4	7,642.0	84.8	84.3	90.19	-2.2	-2,479.1	882.8	713.9	168.94	5.226		
10,800.0	7,642.0	10,752.4	7,642.0	87.5	87.0	90.19	-2.2	-2,579.1	882.8	708.4	174.36	5.063		
10,900.0	7,642.0	10,852.4	7,642.0	90.2	89.7	90.19	-2.2	-2,679.1	882.8	703.0	179.80	4.910		
11,000.0	7,642.0	10,952.4	7,642.0	92.9	92.5	90.19	-2.2	-2,779.1	882.8	697.6	185.25	4.765		
11,100.0	7,642.0	11,052.4	7,642.0	95.7	95.2	90.19	-2.2	-2,879.1	882.8	692.1	190.71	4.629		
11,200.0	7,642.0	11,152.4	7,642.0	98.4	97.9	90.19	-2.2	-2,979.1	882.8	686.6	196.18	4.500		
11,300.0	7,642.0	11,252.4	7,642.0	101.1	100.7	90.19	-2.2	-3,079.1	882.8	681.2	201.65	4.378		
11,400.0	7,642.0	11,352.4	7,642.0	103.9	103.4	90.19	-2.2	-3,179.1	882.8	675.7	207.13	4.262		
11,500.0	7,642.0	11,452.4	7,642.0	106.6	106.2	90.19	-2.2	-3,279.1	882.8	670.2	212.62	4.152		
11,600.0	7,642.0	11,552.4	7,642.0	109.4	108.9	90.19	-2.2	-3,379.1	882.8	664.7	218.12	4.047		
11,700.0	7,642.0	11,652.4	7,642.0	112.1	111.7	90.19	-2.2	-3,479.1	882.8	659.2	223.62	3.948		
11,800.0	7,642.0	11,752.4	7,642.0	114.9	114.4	90.19	-2.2	-3,579.1	882.8	653.7	229.12	3.853		
11,900.0	7,642.0	11,852.4	7,642.0	117.6	117.2	90.19	-2.2	-3,679.1	882.8	648.2	234.63	3.763		
12,000.0	7,642.0	11,952.4	7,642.0	120.4	119.9	90.19	-2.2	-3,779.1	882.8	642.7	240.15	3.676		
12,100.0	7,642.0	12,052.4	7,642.0	123.1	122.7	90.19	-2.2	-3,879.1	882.8	637.1	245.67	3.594		
12,200.0	7,642.0	12,152.4	7,642.0	125.9	125.4	90.19	-2.2	-3,979.1	882.8	631.6	251.19	3.515		
12,205.0	7,642.0	12,157.4	7,642.0	126.0	125.6	90.19	-2.2	-3,984.1	882.8	631.3	251.47	3.511		
12,300.0	7,642.0	12,162.6	7,642.0	128.7	125.7	90.19	-2.2	-3,989.3	887.4	633.1	254.24	3.490 SF		
12,400.0	7,642.0	12,162.6	7,642.0	131.4	125.7	90.19	-2.2	-3,989.3	903.0	646.0	257.00	3.514		
12,500.0	7,642.0	12,162.6	7,642.0	134.2	125.7	90.19	-2.2	-3,989.3	929.1	669.4	259.77	3.577		
12,600.0	7,642.0	12,162.6	7,642.0	137.0	125.7	90.19	-2.2	-3,989.3	965.0	702.5	262.54	3.676		

Company:	Synergy Resources	Local Co-ordinate Reference:	Well SRC Eberle 14-32-31CHZM
Project:	SEC.32-T1N-R66W	TVD Reference:	WELL @ 5047.0ft (Ensign Rig #134 - RKB - 13')
Reference Site:	SRC Eberle 14-32-31CHZM Pad Sec.32-T1N-R66W	MD Reference:	WELL @ 5047.0ft (Ensign Rig #134 - RKB - 13')
Site Error:	0.0ft	North Reference:	True
Reference Well:	SRC Eberle 14-32-31CHZM	Survey Calculation Method:	Minimum Curvature
Well Error:	0.0ft	Output errors are at	2.00 sigma
Reference Wellbore	Wellbore #1	Database:	landmark
Reference Design:	Plan #3 (3-14-14)	Offset TVD Reference:	Offset Datum

Offset Design		SRC Eberle 14-32-31CHZM Pad Sec.32-T1N-R66W - SRC Eberle P-32NHZ - Wellbore #1 - Plan #2 (3-										Offset Site Error:		0.0 ft
Survey Program: 0-MWD												Offset Well Error:		0.0 ft
Reference		Offset		Semi Major Axis		Distance								Warning
Measured Depth (ft)	Vertical Depth (ft)	Measured Depth (ft)	Vertical Depth (ft)	Reference (ft)	Offset (ft)	Highside Toolface (°)	Offset Wellbore Centre +N/-S (ft)	+E/-W (ft)	Between Centres (ft)	Between Ellipses (ft)	Minimum Separation (ft)	Separation Factor		
0.0	0.0	0.0	0.0	0.0	0.0	-89.58	0.3	-45.4	45.4					
100.0	100.0	98.0	98.0	0.1	0.1	-89.58	0.3	-45.4	45.4	45.2	0.22	203.957		
200.0	200.0	198.0	198.0	0.3	0.3	-89.58	0.3	-45.4	45.4	44.7	0.67	67.759	CC, ES	
300.0	300.0	298.0	298.0	0.5	0.6	132.37	0.3	-45.4	46.0	44.9	1.10	41.825		
400.0	400.0	398.0	398.0	0.7	0.8	134.67	0.3	-45.4	47.8	46.2	1.53	31.282		
500.0	499.9	497.9	497.9	1.0	1.0	138.14	0.3	-45.4	50.9	49.0	1.97	25.861		
600.0	599.7	597.7	597.7	1.2	1.2	142.31	0.3	-45.4	55.6	53.2	2.42	22.986		
700.0	699.4	697.4	697.4	1.5	1.5	146.71	0.3	-45.4	62.0	59.2	2.88	21.569		
800.0	798.9	796.9	796.9	1.7	1.7	150.96	0.3	-45.4	70.2	66.9	3.33	21.070		
900.0	898.3	898.4	898.4	2.0	1.9	155.68	0.8	-43.8	79.1	75.3	3.78	20.902		
1,000.0	997.4	999.9	999.7	2.3	2.1	161.45	2.1	-38.6	87.4	83.2	4.22	20.722		
1,100.0	1,096.3	1,101.1	1,100.5	2.7	2.3	168.05	4.4	-30.1	95.9	91.3	4.66	20.589		
1,200.0	1,194.9	1,201.9	1,200.6	3.0	2.6	175.23	7.6	-18.2	105.3	100.2	5.12	20.575	SF	
1,300.0	1,293.3	1,301.2	1,298.7	3.4	2.9	-177.59	11.4	-3.6	116.6	110.9	5.62	20.738		
1,400.0	1,391.3	1,399.4	1,395.7	3.8	3.2	-171.71	15.4	11.3	130.7	124.5	6.17	21.180		
1,500.0	1,489.2	1,497.5	1,492.6	4.3	3.5	-167.03	19.3	26.1	146.3	139.5	6.77	21.620		
1,600.0	1,587.2	1,595.7	1,589.6	4.7	3.8	-163.26	23.3	41.0	162.6	155.2	7.39	22.010		
1,700.0	1,685.2	1,693.8	1,686.5	5.1	4.1	-160.18	27.2	55.8	179.5	171.4	8.03	22.351		
1,800.0	1,783.1	1,792.0	1,783.4	5.6	4.5	-157.64	31.2	70.7	196.8	188.1	8.69	22.648		
1,900.0	1,881.1	1,890.1	1,880.4	6.0	4.8	-155.50	35.1	85.5	214.4	205.0	9.36	22.908		
2,000.0	1,979.0	1,988.2	1,977.3	6.4	5.1	-153.69	39.0	100.3	232.3	222.2	10.04	23.136		
2,100.0	2,077.0	2,086.4	2,074.2	6.9	5.5	-152.14	43.0	115.2	250.3	239.6	10.73	23.338		
2,200.0	2,175.0	2,184.5	2,171.2	7.3	5.8	-150.80	46.9	130.0	268.6	257.1	11.42	23.517		
2,300.0	2,272.9	2,282.7	2,268.1	7.8	6.2	-149.63	50.9	144.9	286.9	274.8	12.12	23.678		
2,400.0	2,370.9	2,380.8	2,365.0	8.2	6.5	-148.60	54.8	159.7	305.3	292.5	12.82	23.823		
2,500.0	2,468.8	2,479.0	2,462.0	8.7	6.9	-147.69	58.7	174.6	323.9	310.3	13.52	23.954		
2,600.0	2,566.8	2,577.1	2,558.9	9.1	7.2	-146.87	62.7	189.4	342.5	328.2	14.23	24.072		
2,700.0	2,664.8	2,675.3	2,655.9	9.6	7.6	-146.14	66.6	204.2	361.1	346.2	14.93	24.181		
2,800.0	2,762.7	2,773.4	2,752.8	10.0	7.9	-145.48	70.6	219.1	379.8	364.2	15.64	24.280		
2,900.0	2,860.7	2,871.5	2,849.7	10.5	8.3	-144.89	74.5	233.9	398.6	382.2	16.35	24.372		
3,000.0	2,958.6	2,969.7	2,946.7	10.9	8.6	-144.34	78.5	248.8	417.4	400.3	17.07	24.456		
3,100.0	3,056.6	3,067.8	3,043.6	11.3	9.0	-143.85	82.4	263.6	436.2	418.4	17.78	24.534		
3,200.0	3,154.5	3,166.0	3,140.5	11.8	9.4	-143.39	86.3	278.5	455.1	436.6	18.49	24.606		
3,300.0	3,252.5	3,264.1	3,237.5	12.2	9.7	-142.97	90.3	293.3	474.0	454.7	19.21	24.674		
3,400.0	3,350.5	3,362.3	3,334.4	12.7	10.1	-142.58	94.2	308.1	492.9	472.9	19.92	24.736		
3,500.0	3,448.4	3,460.4	3,431.3	13.1	10.4	-142.22	98.2	323.0	511.8	491.1	20.64	24.795		
3,600.0	3,546.4	3,558.6	3,528.3	13.6	10.8	-141.89	102.1	337.8	530.7	509.4	21.36	24.850		
3,700.0	3,644.3	3,656.7	3,625.2	14.1	11.1	-141.58	106.0	352.7	549.7	527.6	22.07	24.902		
3,800.0	3,742.3	3,754.8	3,722.1	14.5	11.5	-141.29	110.0	367.5	568.7	545.9	22.79	24.950		
3,900.0	3,840.3	3,853.0	3,819.1	15.0	11.9	-141.02	113.9	382.3	587.6	564.1	23.51	24.996		
4,000.0	3,938.2	3,951.1	3,916.0	15.4	12.2	-140.77	117.9	397.2	606.6	582.4	24.23	25.039		
4,100.0	4,036.2	4,049.3	4,012.9	15.9	12.6	-140.53	121.8	412.0	625.6	600.7	24.95	25.080		
4,200.0	4,134.1	4,147.4	4,109.9	16.3	12.9	-140.30	125.8	426.9	644.7	619.0	25.67	25.118		
4,300.0	4,232.1	4,245.6	4,206.8	16.8	13.3	-140.09	129.7	441.7	663.7	637.3	26.38	25.155		
4,400.0	4,330.1	4,343.7	4,303.8	17.2	13.7	-139.89	133.6	456.6	682.7	655.6	27.10	25.189		
4,500.0	4,428.0	4,441.9	4,400.7	17.7	14.0	-139.70	137.6	471.4	701.8	673.9	27.82	25.222		
4,600.0	4,526.0	4,540.0	4,497.6	18.1	14.4	-139.53	141.5	486.2	720.8	692.3	28.54	25.253		
4,700.0	4,623.9	4,638.1	4,594.6	18.6	14.8	-139.36	145.5	501.1	739.9	710.6	29.26	25.283		
4,800.0	4,721.9	4,736.3	4,691.5	19.0	15.1	-139.20	149.4	515.9	758.9	729.0	29.98	25.312		
4,900.0	4,819.9	4,834.4	4,788.4	19.5	15.5	-139.04	153.3	530.8	778.0	747.3	30.70	25.339		
5,000.0	4,917.8	4,932.6	4,885.4	19.9	15.8	-138.90	157.3	545.6	797.1	765.7	31.42	25.365		

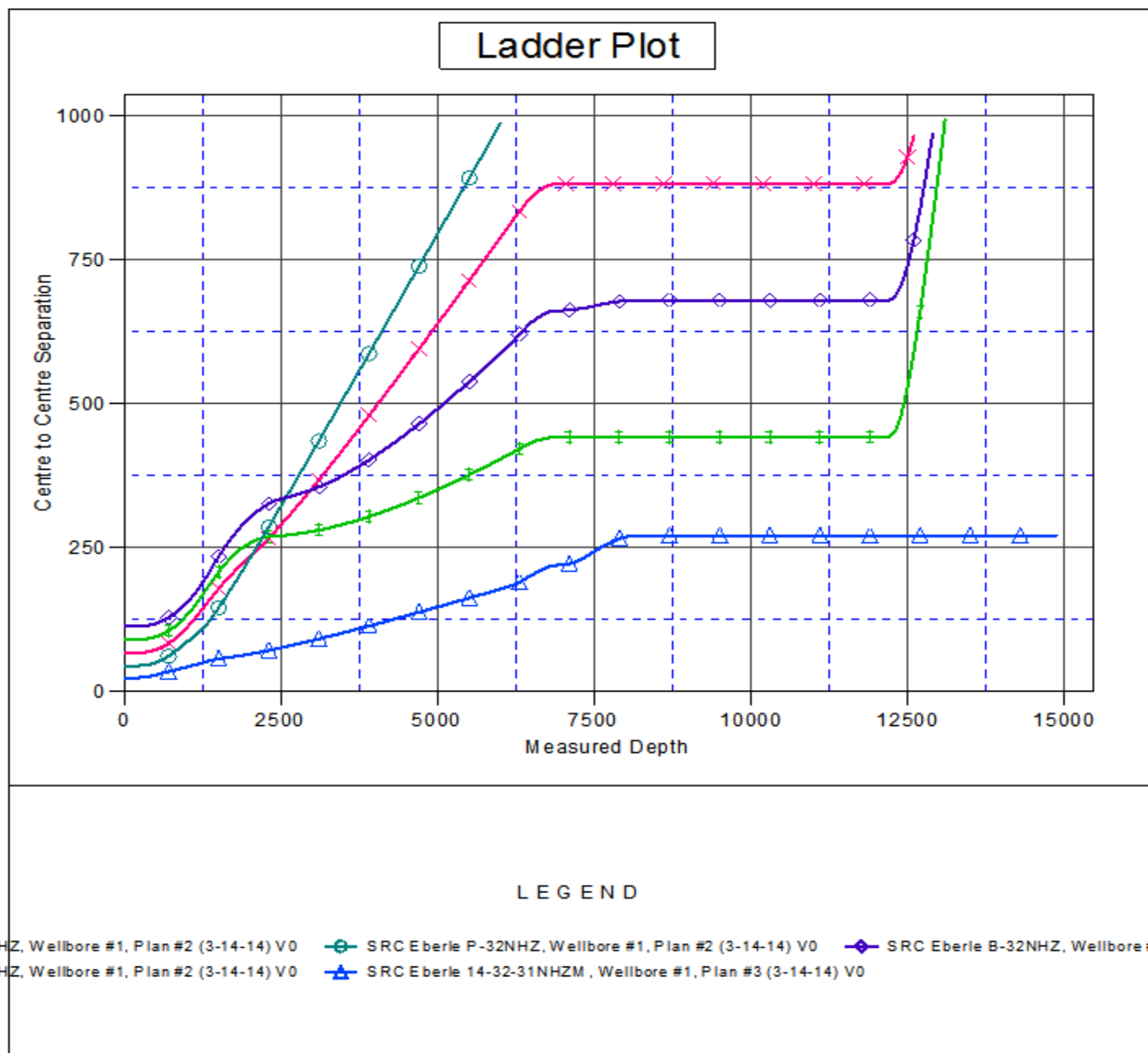
CC - Min centre to center distance or convergent point, SF - min separation factor, ES - min ellipse separation

Company:	Synergy Resources	Local Co-ordinate Reference:	Well SRC Eberle 14-32-31CHZM
Project:	SEC.32-T1N-R66W	TVD Reference:	WELL @ 5047.0ft (Ensign Rig #134 - RKB - 13')
Reference Site:	SRC Eberle 14-32-31CHZM Pad Sec.32-T1N-R66W	MD Reference:	WELL @ 5047.0ft (Ensign Rig #134 - RKB - 13')
Site Error:	0.0ft	North Reference:	True
Reference Well:	SRC Eberle 14-32-31CHZM	Survey Calculation Method:	Minimum Curvature
Well Error:	0.0ft	Output errors are at	2.00 sigma
Reference Wellbore	Wellbore #1	Database:	landmark
Reference Design:	Plan #3 (3-14-14)	Offset TVD Reference:	Offset Datum

Offset Design													Offset Site Error:	0.0 ft
Survey Program: 0-MWD													Offset Well Error:	0.0 ft
Reference														
		Offset		Semi Major Axis			Distance							
Measured Depth (ft)	Vertical Depth (ft)	Measured Depth (ft)	Vertical Depth (ft)	Reference (ft)	Offset (ft)	Highside Toolface (°)	Offset Wellbore Centre +N/-S (ft)	Offset Wellbore Centre +E/-W (ft)	Between Centres (ft)	Between Ellipses (ft)	Minimum Separation (ft)	Separation Factor	Warning	
5,100.0	5,015.8	5,030.7	4,982.3	20.4	16.2	-138.76	161.2	560.5	816.2	784.0	32.15	25.390		
5,200.0	5,113.7	5,128.9	5,079.2	20.8	16.6	-138.62	165.2	575.3	835.2	802.4	32.87	25.413		
5,300.0	5,211.7	5,227.0	5,176.2	21.3	16.9	-138.50	169.1	590.1	854.3	820.7	33.59	25.436		
5,400.0	5,309.7	5,325.2	5,273.1	21.7	17.3	-138.38	173.1	605.0	873.4	839.1	34.31	25.458		
5,500.0	5,407.6	5,423.3	5,370.0	22.2	17.7	-138.26	177.0	619.8	892.5	857.5	35.03	25.479		
5,600.0	5,505.6	5,521.4	5,467.0	22.6	18.0	-138.15	180.9	634.7	911.6	875.9	35.75	25.499		
5,700.0	5,603.5	5,619.6	5,563.9	23.1	18.4	-138.04	184.9	649.5	930.7	894.2	36.47	25.518		
5,800.0	5,701.5	5,717.7	5,660.9	23.5	18.7	-137.94	188.8	664.4	949.8	912.6	37.19	25.537		
5,900.0	5,799.5	5,815.9	5,757.8	24.0	19.1	-137.84	192.8	679.2	968.9	931.0	37.92	25.554		
6,000.0	5,897.4	5,914.0	5,854.7	24.4	19.5	-137.75	196.7	694.0	988.0	949.4	38.64	25.572		

Company:	Synergy Resources	Local Co-ordinate Reference:	Well SRC Eberle 14-32-31CHZM
Project:	SEC.32-T1N-R66W	TVD Reference:	WELL @ 5047.0ft (Ensign Rig #134 - RKB - 13')
Reference Site:	SRC Eberle 14-32-31CHZM Pad Sec.32-T1N-R66W	MD Reference:	WELL @ 5047.0ft (Ensign Rig #134 - RKB - 13')
Site Error:	0.0ft	North Reference:	True
Reference Well:	SRC Eberle 14-32-31CHZM	Survey Calculation Method:	Minimum Curvature
Well Error:	0.0ft	Output errors are at	2.00 sigma
Reference Wellbore	Wellbore #1	Database:	landmark
Reference Design:	Plan #3 (3-14-14)	Offset TVD Reference:	Offset Datum

Reference Depths are relative to WELL @ 5047.0ft (Ensign Rig #134 - Coordinates are relative to: SRC Eberle 14-32-31CHZM
 Offset Depths are relative to Offset Datum
 Central Meridian is -105.500000 °
 Coordinate System is US State Plane 1983, Colorado Northern Zone
 Grid Convergence at Surface is: 0.46°



Company:	Synergy Resources	Local Co-ordinate Reference:	Well SRC Eberle 14-32-31CHZM
Project:	SEC.32-T1N-R66W	TVD Reference:	WELL @ 5047.0ft (Ensign Rig #134 - RKB - 13')
Reference Site:	SRC Eberle 14-32-31CHZM Pad Sec.32-T1N-R66W	MD Reference:	WELL @ 5047.0ft (Ensign Rig #134 - RKB - 13')
Site Error:	0.0ft	North Reference:	True
Reference Well:	SRC Eberle 14-32-31CHZM	Survey Calculation Method:	Minimum Curvature
Well Error:	0.0ft	Output errors are at	2.00 sigma
Reference Wellbore	Wellbore #1	Database:	landmark
Reference Design:	Plan #3 (3-14-14)	Offset TVD Reference:	Offset Datum

Reference Depths are relative to WELL @ 5047.0ft (Ensign Rig #134 - Coordinates are relative to: SRC Eberle 14-32-31CHZM

Offset Depths are relative to Offset Datum

Coordinate System is US State Plane 1983, Colorado Northern Zone

Central Meridian is -105.500000 °

Grid Convergence at Surface is: 0.46°

