

*The Road to Excellence Starts with Safety*

Sold To #: 300721	Ship To #: 300721	Quote #:	Sales Order #: 900800784
Customer: WPX ENERGY ROCKY MOUNTAIN LLC-EBUS	Customer Rep: Ragsdale, Ted		
Well Name: RG	Well #: 534-14-298	API/UWI #:	
Field: SULFUR CREEK	City (SAP): TULSA	County/Parish: Rio Blanco	State: Colorado
Legal Description:			
Lat:	Long:		
Contractor: Cyclone	Rig/Platform Name/Num: Cyclone 29		
Job Purpose: Cement Multiple Stages	Ticket Amount:		
Well Type: Development Well	Job Type: Cement Multiple Stages		
Sales Person: MAYO, MARK	Srvc Supervisor: REEVES, BRANDON	MBU ID Emp #: 287883	

Activity Description	Date/Time	Cht #	Rate bbl/min	Volume bbl		Pressure psig		Comments
				Stage	Total	Tubing	Casing	
Call Out	10/06/2013 04:30							
Depart from Service Center or Other Site	10/06/2013 06:50							
Arrive At Loc	10/06/2013 09:20							REQUESTED ON LOCATION TIME WAS 12:00 PM
Assessment Of Location Safety Meeting	10/06/2013 11:00							
Other	10/06/2013 11:20							SPOT EQUIPMENT
Pre-Rig Up Safety Meeting	10/06/2013 11:30							
Rig-Up Equipment	10/06/2013 11:40							
Pre-Job Safety Meeting	10/06/2013 16:30							
Start Job	10/06/2013 16:54							START FIRST STAGE. TD-3448' TP-3441.47' SJ-27.29' MW-8.8 CASING-9 5/8" 32.3 PPF.
Test Lines	10/06/2013 16:56					3430.0		
Pump Spacer 1	10/06/2013 16:57		4	40			130.0	FRESH WATER SPACER
Pump Lead Cement	10/06/2013 17:10		8	217.5			520.0	690 SKS. @ 12.8 PPG. 1.77 YIELD 9.34 GAL/SK.
Pump Tail Cement	10/06/2013 17:38		8	64.6			430.0	185 SKS. @ 12.8 PPG. 1.96 YIELD 10.95 GAL/SK.
Drop Top Plug	10/06/2013 17:47							
Pump Displacement	10/06/2013 17:49		10				990.0	FRESH WATER DISPLACEMENT

Sold To #: 300721

Ship To #: 300721

Quote #:

Sales Order #: 900800784

SUMMIT Version: 7.3.0106

Tuesday, February 18, 2014 09:49:00

Activity Description	Date/Time	Cht #	Rate bbl/min	Volume bbl		Pressure psig		Comments
				Stage	Total	Tubing	Casing	
Slow Rate	10/06/2013 18:00		2	95			20.0	SLOW RATE FOR THE DART TO PASS THROUGH THE MSC TOOL.
Bump Plug	10/06/2013 18:21		10	259			1000.0	PLUG LANDED AT 1000 PSI AT 10 BPM. PRESSURED UP TO 1640 PSI. PLUG LANDED RIGHT AT THE POINT OF SLOWING DOWN TO LAND THE PLUG.
Check Floats	10/06/2013 18:24							FLOATS HELD. 2 BBLS. OF FLOW BACK.
Drop Opening Device For Multiple Stage Cementer	10/06/2013 18:29							WAITED FOR 10 MINTUES FOR THE OPENING PLUG TO LAND AT THE DV TOOL.
End Job	10/06/2013 18:30							END FIRST STAGE. THE WELL WAS CIRCULATED BEFORE STARING THE JOB. GOOD CIRCULATION UP TO ABOUT 200 BBLS INTO DISPLACEMENT. LOST CIRCULATION FOR ABOUT 40 BBLS. CIRCULATED 10 BBLS. OF CONTAMINATED CEMENT TO SURFACE.
Start Job	10/06/2013 18:40							START SECOND STAGE. DV TOOL AT 1297.46'
Open Multiple Stage Cementer	10/06/2013 18:41		1	1			675.0	TOOL OPENED AT 675 PSI.
Pump Spacer 1	10/06/2013 18:42		4	20			105.0	FRESH WATER SPACER
Pump Tail Cement	10/06/2013 18:49		7	281			360.0	805 SKS. @ 12.8 PPG. 1.96 YIELD 10.95 GAL/SK.
Drop Top Plug	10/06/2013 19:34							
Pump Displacement	10/06/2013 19:35		10				525.0	FRESH WATER DISPLACEMENT
Slow Rate	10/06/2013 19:51		2	90			290.0	SLOW RATE TO LAND THE PLUG.



## Cementing Job Log

Activity Description	Date/Time	Cht #	Rate bbl/min	Volume bbl		Pressure psig		Comments
				Stage	Total	Tubing	Casing	
Bump Plug	10/06/2013 19:57		2	102			320.0	PLUG LANDED AT 320 PSI. PRESSURED UP TO 1650 TO CLOSE THE DV TOOL. HAD TO PRESSURE UP ON THE PLUG TWO TIMES AFTER THE PLUG LANDED DUE THE PRESSURE BLEEDING OFF. PRESSURE FINALLY HELD AT 1585 PSI.
Close Multiple Stage Cementer	10/06/2013 19:57						1650.0	CLOSED THE TOOL WITH 1650 PSI.
Release Casing Pressure	10/06/2013 20:04							RELEASE CASING PRESSURE AND MONITOR FLOW BACK TO ENSURE THE DV TOOL CLOSED 2 BBLS. OF FLOW BACK. TOOL CLOSED.
End Job	10/06/2013 20:05							GOOD CIRCULATION THROUGHOUT THE SECOND STAGE. CIRCULATED 90 BBLS. OF CEMENT TO SURFACE.
Comment	10/06/2013 20:06							TOPPED OUT WELL RG 331-23-298 WITH 28 BBLS./ 80 SKS. OF CEMENT FROM THE RETURNS FROM THE RG 534-23-298 WELL.
Comment	10/06/2013 20:07							TOPPED OUT WELL RG 521-23-298 WITH 24.6BBLS./ 71SKS. OF CEMENT FROM THE RETURNS FROM THE RG 534-23-298 WELL.
Comment	10/06/2013 20:08							THANK YOU FOR USING HALLIBURTON CEMENTING. BRANDON REEVES AND CREW.

*The Road to Excellence Starts with Safety*

Sold To #: 300721	Ship To #: 300721	Quote #:	Sales Order #: 900800784
Customer: WPX ENERGY ROCKY MOUNTAIN LLC-EBUS		Customer Rep: Ragsdale, Ted	
Well Name: RG		Well #: 534-14-298	API/UWI #:
Field: SULFUR CREEK	City (SAP): TULSA	County/Parish: Rio Blanco	State: Colorado
Contractor: Cyclone		Rig/Platform Name/Num: Cyclone 29	
Job Purpose: Cement Multiple Stages			
Well Type: Development Well		Job Type: Cement Multiple Stages	
Sales Person: MAYO, MARK		Srvc Supervisor: REEVES, BRANDON	MBU ID Emp #: 287883

**Job Personnel**

HES Emp Name	Exp Hrs	Emp #	HES Emp Name	Exp Hrs	Emp #	HES Emp Name	Exp Hrs	Emp #
ANDERSON, ADAM S	8.0	456683	ATKINSON, STEPHAN Michael	8.0	513940	REEVES, BRANDON W	8.0	287883
ROMKEE, DALE Alan	8.0	488215						

**Equipment**

HES Unit #	Distance-1 way	HES Unit #	Distance-1 way	HES Unit #	Distance-1 way	HES Unit #	Distance-1 way
10567589C	60 mile	10744549	60 mile	10867322	60 mile	10995027	60 mile
10998512	60 mile	11583932	60 mile	11808833	60 mile	4902	60 mile
4905	60 mile						

**Job Hours**

Date	On Location Hours	Operating Hours	Date	On Location Hours	Operating Hours	Date	On Location Hours	Operating Hours
10/06/2013	8	5						

**TOTAL** Total is the sum of each column separately

Job				Job Times			
Formation Name				Called Out	Date	Time	Time Zone
Formation Depth (MD)	Top	Bottom		On Location	06 - Oct - 2013	04:30	MST
Form Type		BHST		Job Started	06 - Oct - 2013	09:20	MST
Job depth MD	3441.2 ft	Job Depth TVD	3441.2 ft	Job Completed	06 - Oct - 2013	16:54	MST
Water Depth		Wk Ht Above Floor	4. ft	Job Completed	06 - Oct - 2013	20:05	MST
Perforation Depth (MD)	From	To		Departed Loc	06 - Oct - 2013	00:00	MST

**Well Data**

Description	New / Used	Max pressure psig	Size in	ID in	Weight lbm/ft	Thread	Grade	Top MD ft	Bottom MD ft	Top TVD ft	Bottom TVD ft
-------------	------------	-------------------	---------	-------	---------------	--------	-------	-----------	--------------	------------	---------------

**Tools and Accessories**

Type	Size	Qty	Make	Depth	Type	Size	Qty	Make	Depth	Type	Size	Qty	Make
Guide Shoe					Packer					Top Plug			
Float Shoe					Bridge Plug					Bottom Plug			
Float Collar					Retainer					SSR plug set			
Insert Float										Plug Container	9 5/8"	1	
Stage Tool										Centralizers			

**Miscellaneous Materials**

Gelling Agt		Conc		Surfactant		Conc		Acid Type		Qty		Conc	%
Treatment Fld		Conc		Inhibitor		Conc		Sand Type		Size		Qty	

**Fluid Data**

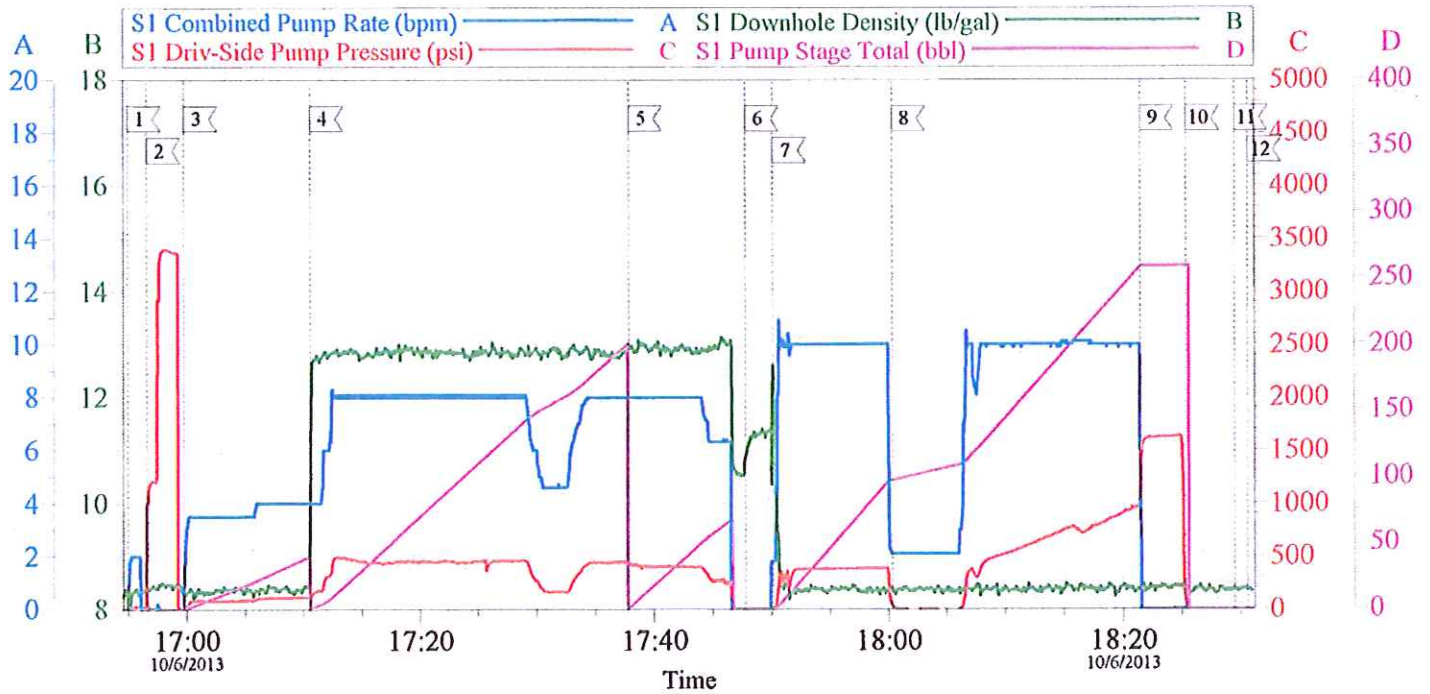
Stage/Plug #: 1													
Fluid #	Stage Type	Fluid Name			Qty	Qty uom	Mixing Density lbm/gal	Yield ft3/sk	Mix Fluid Gal/sk	Rate bbl/min	Total Mix Fluid Gal/sk		

Stage/Plug #: 1													
Fluid #	Stage Type	Fluid Name			Qty	Qty uom	Mixing Density uom	Yield uom	Mix Fluid uom	Rate uom	Total Mix Fluid uom		



Stage/Plug #: 1									
Fluid #	Stage Type	Fluid Name	Qty	Qty uom	Mixing Density lbm/gal	Yield ft <sup>3</sup> /sk	Mix Fluid Gal/sk	Rate bbl/min	Total Mix Fluid Gal/sk
1	Fresh Water Spacer		40.00	bbl	8.33	.0	.0	4.0	
2	1st Stage HLC Lead Cement	ECONOCEM (TM) SYSTEM (452992)	690.0	sacks	12.8	1.77	9.34	8.0	9.34
	0.25 lbm	POLY-E-FLAKE (101216940)							
	0.35 %	HR-5, 50 LB SK (100005050)							
	9.34 Gal	FRESH WATER							
3	1st Stage Varicem Tail Cement	VARICEM (TM) CEMENT (452009)	185.0	sacks	12.8	1.96	10.95	8.0	10.95
	0.3 lbm	POLY-E-FLAKE (101216940)							
	10.95 Gal	FRESH WATER							
4	Displacement		259.00	bbl	8.33	.0	.0	10.0	
5	Fresh Water Spacer		20.00	bbl	8.33	.0	.0	4.0	
6	2nd Stage VariCem Cement	VARICEM (TM) CEMENT (452009)	805.0	sacks	12.8	1.96	10.95	7.0	10.95
	0.3 lbm	POLY-E-FLAKE (101216940)							
	10.95 Gal	FRESH WATER							
7	Displacement		102.00	bbl	8.33	.0	.0	10.0	
Calculated Values		Pressures		Volumes					
Displacement	268	Shut In: Instant		Lost Returns	YES	Cement Slurry	563.1	Pad	
Top Of Cement	SURFACE	5 Min		Cement Returns	90	Actual Displacement	259	Treatment	
Frac Gradient		15 Min		Spacers	60	Load and Breakdown		Total Job	
Rates									
Circulating		Mixing	8	Displacement	10	Avg. Job	8		
Cement Left In Pipe	Amount	27.29 ft	Reason	Shoe Joint					
Frac Ring # 1 @	ID	Frac ring # 2 @	ID	Frac Ring # 3 @	ID	Frac Ring # 4 @	ID		
The Information Stated Herein Is Correct				Customer Representative Signature					

**WPX ENERGY RG 534-14-298**  
**9 5/8" SURFACE FIRST STAGE**

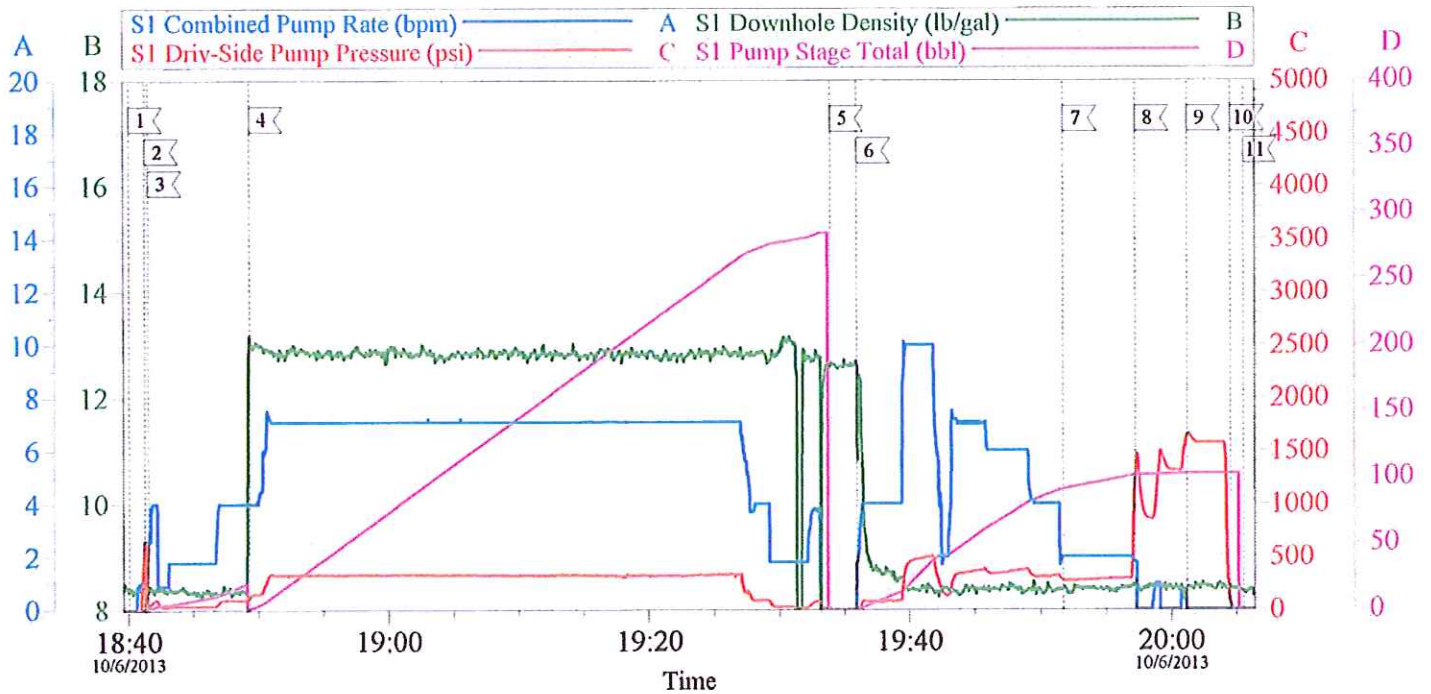


Local Event Log			
Intersection	SDPP	Intersection	SDPP
1 START JOB	16:54:57 -15.70	2 TEST LINES	16:56:37 997.5
4 PUMP LEAD CEMENT	17:10:36 115.9	5 PUMP TAIL CEMENT	17:37:50 436.0
7 PUMP DISPLACEMENT	17:50:08 9.267	8 SLOW RATE	18:00:19 31.22
10 CHECK FLOATS	18:25:21 73.58	11 DROP OPENING PLUG	18:29:28 -25.70
		12 END FIRST STAGE	18:30:38 -25.70
		3 PUMP H2O SPACER	16:59:47 1.254
		6 DROP TOP PLUG	17:47:47 -18.70
		9 LAND PLUG	18:21:26 1171

Customer: WPX ENERGY	Job Date: 06-Oct-2013	Sales Order #: 900800784
Well Description: RG 534-14-298	Job Type: 9 5/8" SURFACE FIRST STAGE	AIXC Used: YES
Supervisor: BRANDON REEVES	Company Rep: TED RAGSDALE	Elite/Operator: 3/ADAM ANDERSON

OptiCem v6.4.10  
06-Oct-13 18:33

**WPX ENERGY RG534-14-298**  
**9 5/8" SURFACE SECOND STAGE**



Local Event Log					
Intersection	SDPP	Intersection	SDPP	Intersection	SDPP
1 START JOB	18:40:04 -25.70	2 OPEN DV TOOL	18:41:18 648.7	3 PUMP H2O SPACER	18:41:32 32.30
4 PUMP CEMENT	18:49:20 123.4	5 DROP CLOSING PLUG	19:33:56 0.304	6 PUMP DISPLACEMENT	19:35:59 3.393
7 SLOW RATE	19:51:43 275.3	8 LAND PLUG	19:57:12 1250	9 CLOSE TOOL	20:01:12 1645
10 RELEASE PRESSURE	20:04:32 54.11	11 END JOB	20:05:30 -14.97		

Customer: WPX ENERGY	Job Date: 06-Oct-2013	Sales Order #: 900800784
Well Description: RG 534-14-298	Job Type: 9 5/8" SURFACE SECOND STAGE	ADC Used: YES
Supervisor: BRANDON REEVES	Company Rep: TED RAGSDALE	Elite/Operator: 3/ADAM ANDERSON

OptiCem v6.4.10  
06-Oct-13 20:12