

LEGEND:

 PROPOSED LOCATION

BILL BARRETT CORPORATION

RUH 6-62-11_14 NWNE PAD #6-62-11-0560CH2,
0560BH2, 0659CH2 & 0659BH2
SECTION 11, T6N, R62W, 6th P.M.
NW 1/4 NE 1/4



Utah Engineering & Land Surveying
85 South 200 East Vernal, Utah 84078
(435) 789-1017 * FAX (435) 789-1813

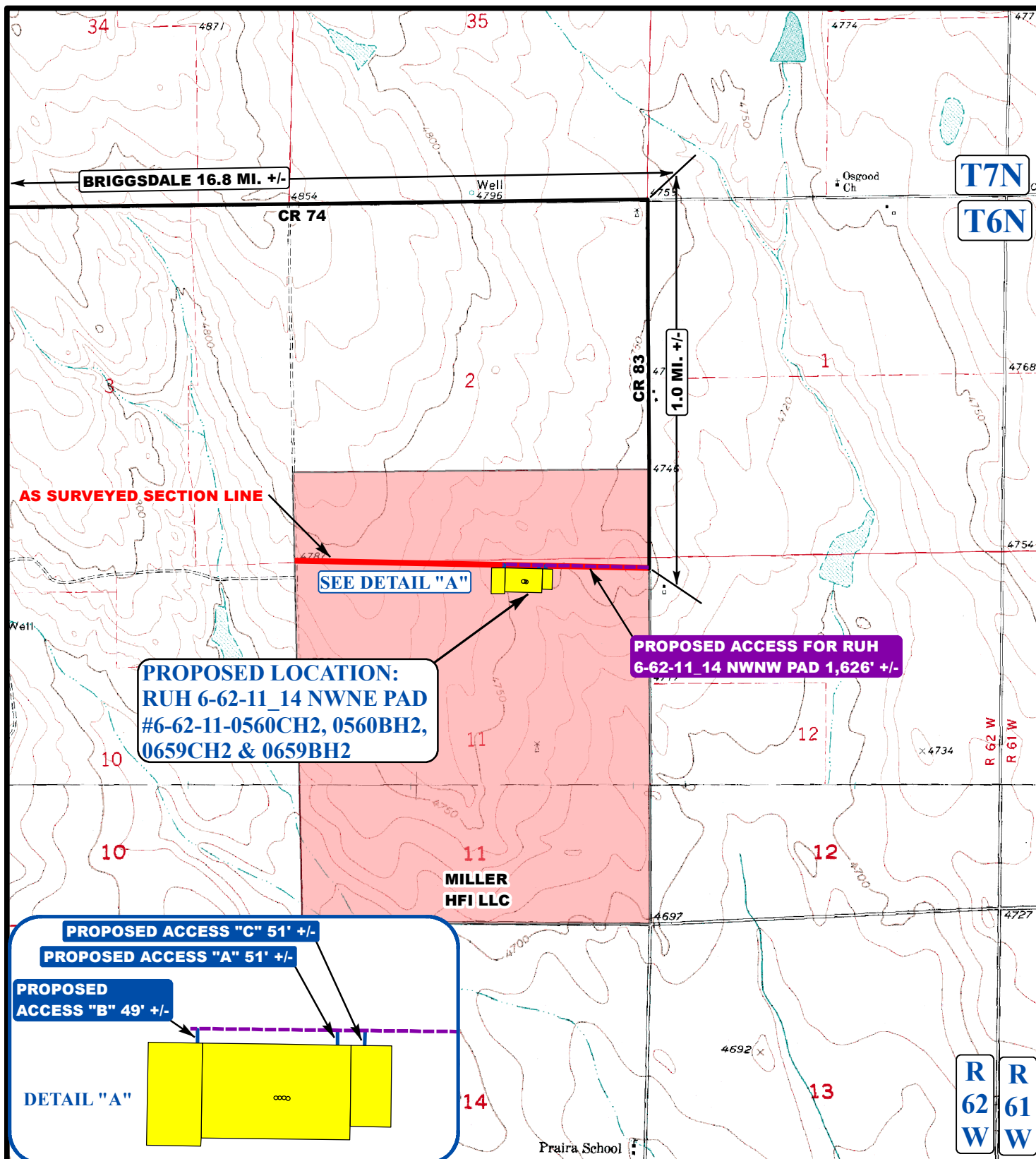


**ACCESS ROAD
MAP**

03 11 14
MONTH DAY YEAR

SCALE: 1:100,000 DRAWN BY: J.L.G. REVISED: 03-20-14





LEGEND:

- EXISTING ROADS
- PROPOSED ACCESS ROAD
- PROPOSED ACCESS ROAD (SERVICING OTHER WELLS)



Utah Engineering & Land Surveying
 85 South 200 East Vernal, Utah 84078
 (435) 789-1017 * FAX (435) 789-1813



BILL BARRETT CORPORATION

RUH 6-62-11_14 NWNE PAD #6-62-11-0560CH2,
 0560BH2, 0659CH2 & 0659BH2
 SECTION 11, T6N, R62W, 6th P.M.
 NW 1/4 NE 1/4

**ACCESS ROAD
 MAP**

03 11 14
 MONTH DAY YEAR

SCALE: 1"=2000' DRAWN BY: J.L.G. REVISED: 03-20-14



BILL BARRETT CORPORATION
RUH 6-62-11_14 NWNE PAD #6-62-11-0560CH2,
0560BH2, 0659CH2 & 0659BH2
SECTION 11, T6N, R62W, 6th P.M.

PROCEED IN A SOUTHERLY, THEN SOUTHWESTERLY DIRECTION FROM BRIGGS DALE, COLORADO ALONG HIGHWAY 392 APPROXIMATELY 9.7 MILES TO THE JUNCTION OF THIS ROAD AND COUNTY ROAD 74 TO THE EAST; TURN LEFT AND PROCEED IN AN EASTERLY DIRECTION APPROXIMATELY 7.1 MILES TO THE JUNCTION OF THIS ROAD AND COUNTY ROAD 83 TO THE SOUTH; TURN RIGHT AND PROCEED IN A SOUTHERLY DIRECTION APPROXIMATELY 1.0 MILES TO THE BEGINNING OF THE PROPOSED ACCESS ROAD FOR THE RUH #6-62-11_14 NWNW PAD TO THE WEST; FOLLOW ROAD FLAGS IN A WESTERLY DIRECTION APPROXIMATELY 1,626' TO THE BEGINNING OF THE PROPOSED ACCESS ROAD TO THE SOUTH; FOLLOW ROAD FLAGS IN A SOUTHERLY DIRECTION APPROXIMATELY 51' TO THE PROPOSED LOCATION.

TOTAL DISTANCE FROM BRIGGS DALE, COLORADO TO THE PROPOSED WELL LOCATION IS APPROXIMATELY 18.1 MILES.