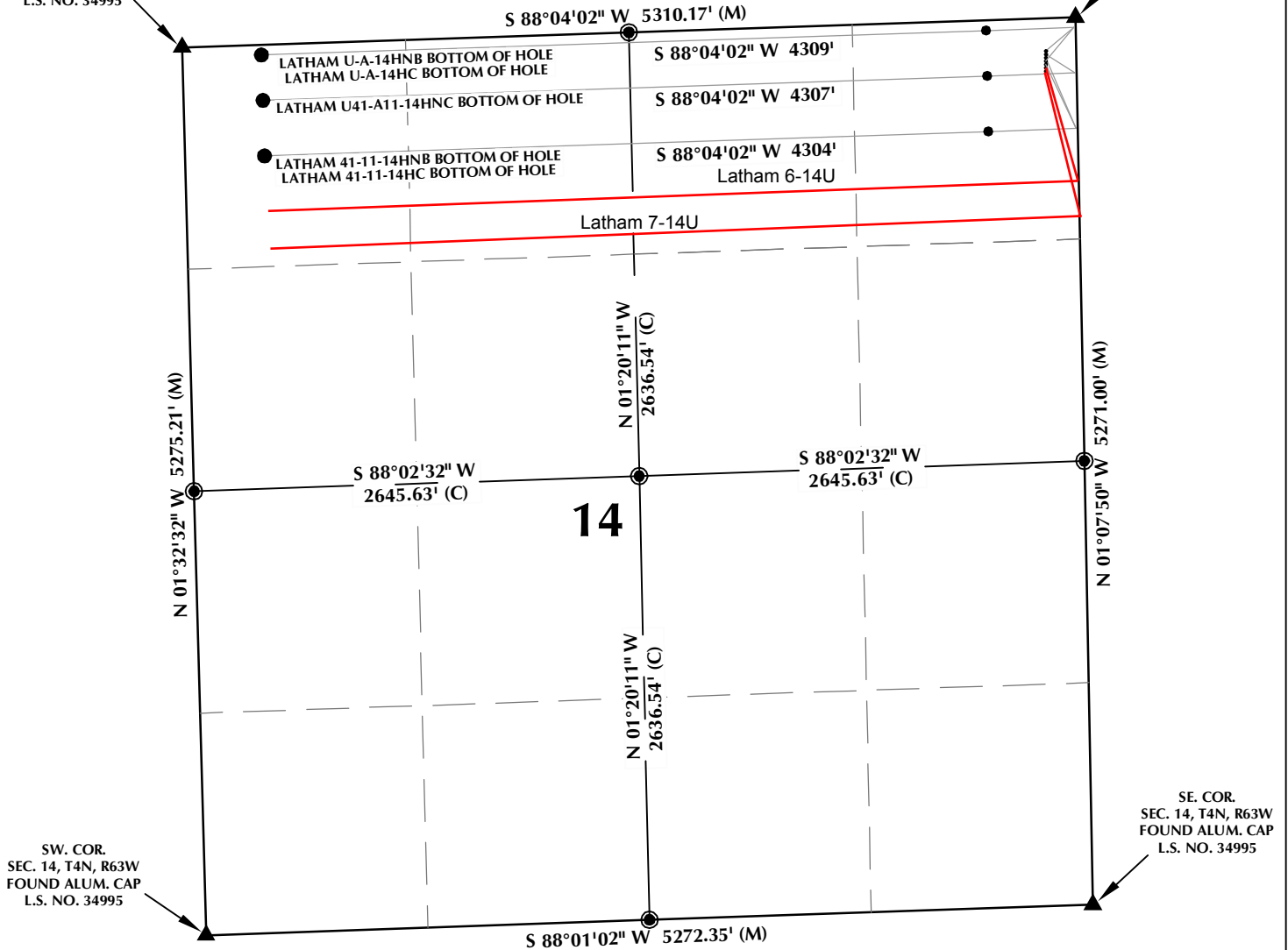


# LATHAM U-14 T4N, R63W

N.W. COR.  
SEC. 14, T4N, R63W  
FOUND ALUM. CAP  
L.S. NO. 34995

NE. COR.  
SEC. 14, T4N, R63W  
FOUND ALUM. CAP  
L.S. NO. 4845



## WELL NOTES:

### LATHAM U-A-14HC

SURFACE: 194' FNL, 179' FEL  
LAT: 40.319478°  
LONGITUDE: -104.396515°

### LATHAM U-A-14HNB

SURFACE: 214' FNL, 179' FEL  
LATITUDE: 40.319423°  
LONGITUDE: -104.396516°

### LATHAM U41-A11-14HNC

SURFACE: 234' FNL, 180' FEL  
LATITUDE: 40.319368°  
LONGITUDE: -104.396517°

### LATHAM 41-11-14HC

SURFACE: 254' FNL, 180' FEL  
LATITUDE: 40.319313°  
LONGITUDE: -104.396518°

### LATHAM 41-11-14HNB

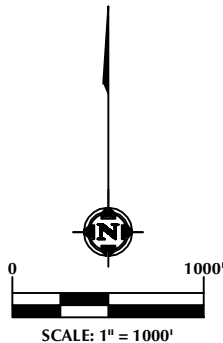
SURFACE: 274' FNL, 181' FEL  
LATITUDE: 40.319258°  
LONGITUDE: -104.396519°

### LATHAM 6-14U

SURFACE: 294' FNL, 181' FEL  
LATITUDE: 40.319204°  
LONGITUDE: -104.396520°

### LATHAM 7-14U

SURFACE: 314' FNL, 181' FEL  
LATITUDE: 40.319149°  
LONGITUDE: -104.396521°



## NOTES:

- ▲ INDICATES FOUND SECTION CORNER
- INDICATES CALCULATED CORNER
- BASIS OF BEARING DERIVED FROM COLORADO COORDINATE SYSTEM 1983 NORTH ZONE UNLESS OTHERWISE NOTED.
- ALL MEASURED DISTANCES ARE GRID.  
COMBINED SCALE FACTOR: .99973617
- WELL FOOTAGES ARE MEASURED AT RIGHT ANGLES TO THE SECTION LINES.

## WELL PAD - LATHAM U-14

MULTI-WELL PLAN  
LATHAM U-A-14HC,  
LATHAM U-A-14HNB,  
LATHAM U41-A11-14HNC,  
LATHAM 41-11-14HC &  
LATHAM 41-11-14HNB  
LOCATED IN SECTION 14  
T4N, R63W, 6TH P.M.  
WELD COUNTY, COLORADO



410 17th Street, Suite 1400  
Denver, Colorado 80202



## CONSULTING, LLC

SHERIDAN OFFICE  
2155 North Main Street  
Sheridan, Wyoming 82801  
Phone 307-674-0609

LOVELAND OFFICE  
1635 Foxtrail Drive, Suite 204  
Loveland, Colorado 80538  
Phone 970-776-4331

DRAFTED BY:	LMO	CHECKED BY:	BJR	SHEET NO:
DATE DRAFTED:	12/20/13	DATE SURVEYED:	11/15/13	1
REVISED:	3/19/14	FILE NAME:	13-94	1 OF 2

# LATHAM U-14 T4N, R63W

NORTH LINE, SECTION 14

EAST LINE, SECTION 14

LATHAM U-A-14HC ●  
LATHAM U-A-14HNB ●  
LATHAM U41-A11-14HNC ●  
LATHAM 41-11-14HC ●  
LATHAM 41-11-14HNB ●  
LATHAM 6-14U ●  
LATHAM 7-14U ●

## WELL NOTES:

### LATHAM U-A-14HC

SURFACE: 194' FNL, 179' FEL  
LAT: 40.319478°  
LONGITUDE: -104.396515°

### LATHAM U-A-14HNB

SURFACE: 214' FNL, 179' FEL  
LATITUDE: 40.319423°  
LONGITUDE: -104.396516°

### LATHAM U41-A11-14HNC

SURFACE: 234' FNL, 180' FEL  
LATITUDE: 40.319368°  
LONGITUDE: -104.396517°

### LATHAM 41-11-14HC

SURFACE: 254' FNL, 180' FEL  
LATITUDE: 40.319313°  
LONGITUDE: -104.396518°

### LATHAM 41-11-14HNB

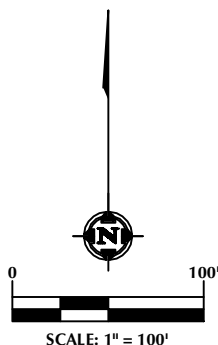
SURFACE: 274' FNL, 181' FEL  
LATITUDE: 40.319258°  
LONGITUDE: -104.396519°

### LATHAM 6-14U

SURFACE: 294' FNL, 181' FEL  
LATITUDE: 40.319204°  
LONGITUDE: -104.396520°

### LATHAM 7-14U

SURFACE: 314' FNL, 181' FEL  
LATITUDE: 40.319149°  
LONGITUDE: -104.396521°



## NOTES:

- ▲ INDICATES FOUND SECTION CORNER
- INDICATES CALCULATED CORNER
- BASIS OF BEARING DERIVED FROM COLORADO COORDINATE SYSTEM 1983 NORTH ZONE UNLESS OTHERWISE NOTED.
- ALL MEASURED DISTANCES ARE GRID.  
COMBINED SCALE FACTOR: .99973617
- WELL FOOTAGES ARE MEASURED AT RIGHT ANGLES TO THE SECTION LINES.

## WELL PAD - LATHAM U-14

MULTI-WELL PLAN  
LATHAM U-A-14HC,  
LATHAM U-A-14HNB,  
LATHAM U41-A11-14HNC,  
LATHAM 41-11-14HC &  
LATHAM 41-11-14HNB  
LOCATED IN SECTION 14  
T4N, R63W, 6TH P.M.  
WELD COUNTY, COLORADO

 **BONANZA  
CREEK**  
410 17th Street, Suite 1400  
Denver, Colorado 80202



## CONSULTING, LLC

SHERIDAN OFFICE  
2155 North Main Street  
Sheridan, Wyoming 82801  
Phone 307-674-0609

LOVELAND OFFICE  
1635 Foxtrail Drive, Suite 204  
Loveland, Colorado 80538  
Phone 970-776-4331

DRAFTED BY:	LMO	CHECKED BY:	BJR	SHEET NO:
DATE DRAFTED:	12/20/13	DATE SURVEYED:	11/15/13	<b>2</b>
REVISED:	3/19/14	FILE NAME:	13-94	2 OF 2