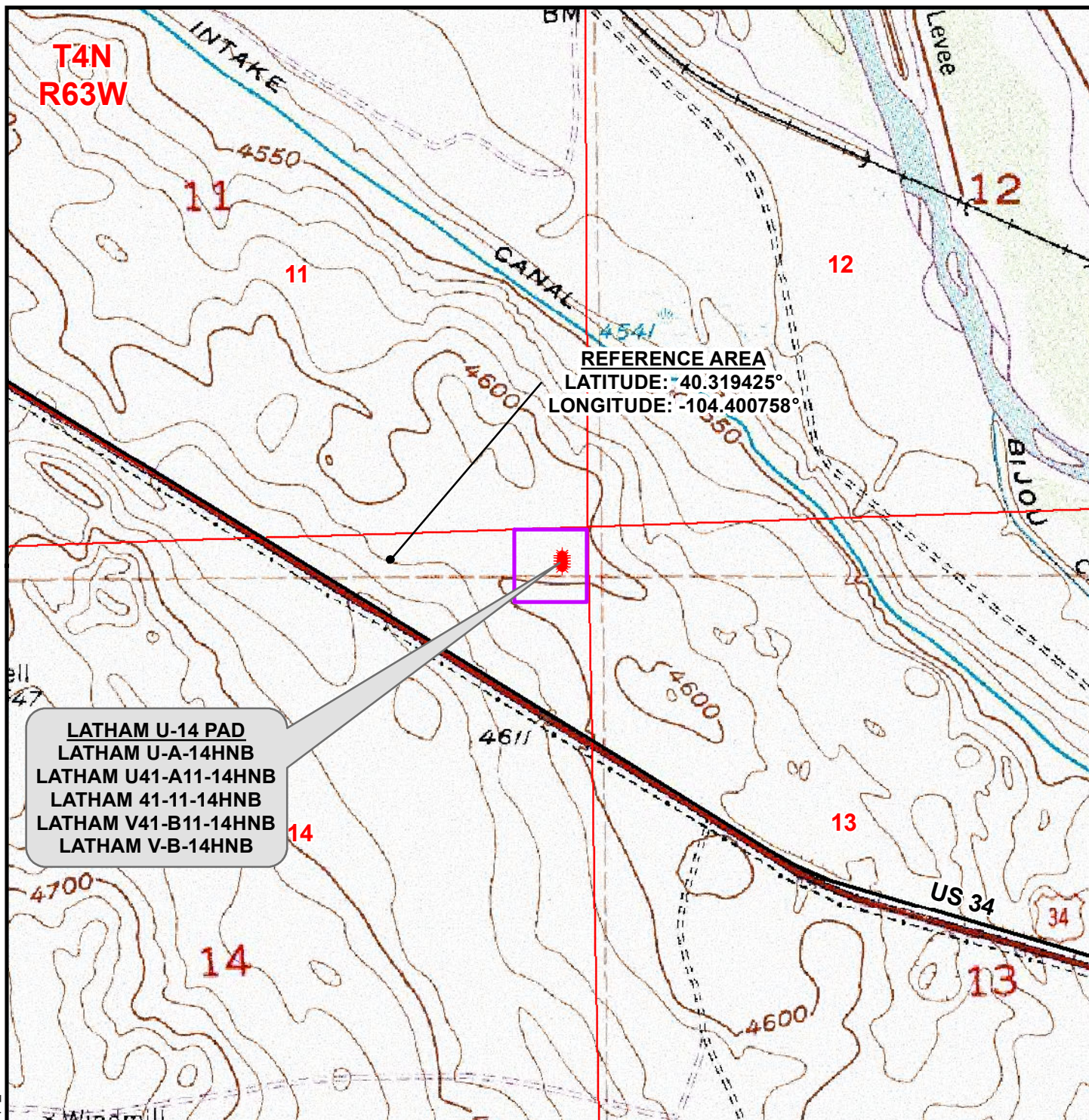


K:\BONANZA CREEK\2013\_04\_2014\_WELL\_STAKING\GIS\Maps\_ABC\Latham U-14\Latham U-14 Ref.mxd 1/14/2014 2:43:18 PM



### Legend

- Well - Fee - Proposed
- Disturbance Area

### WELL PAD - LATHAM U-14

REFERENCE AREA MAP  
LATHAM U-A-14HNB,  
LATHAM U41-A11-14HNB, LATHAM 41-11-14HNB,  
LATHAM V41-B11-14HNB & LATHAM V-B-14HNB  
LOCATED IN NE1/4 NE1/4  
SECTION 14, T4N, R63W, 6th P.M.  
WELD COUNTY, COLORADO



**BONANZA  
CREEK**

410 17th Street, Suite 1400  
Denver, Colorado 80202



### CONSULTING, LLC

SHERIDAN OFFICE  
2155 North Main Street  
Sheridan, Wyoming 82801  
Phone 307-674-0609

LOVELAND OFFICE  
1635 Foxtail Drive, Suite 204  
Loveland, Colorado 80538  
Phone 970-776-4331



SCALE: 1" = 1,000ft

NAD83 CO-Nft

DRAWN:

JELo

DATE: 16 Jan 2014

REVISED:

DATE: