



**CROW CREEK STATE AC36-75-1HN** **TVD**  
5":100'

Company: NOBLE ENERGY  
Well Name: CROW CREEK STATE AC36-75-1HN  
UWI or LSD: 05-123-37419  
Rig Id: H&P 277  
State: CO  
County/Parish: WELD COUNTY  
Country: USA  
Survey Company: DRILTECH, LLC  
Job number: 2013-278-IDDT-CO  
MARK LARUE MWD OPERATOR  
JOSH CAYLOR MWD OPERATOR

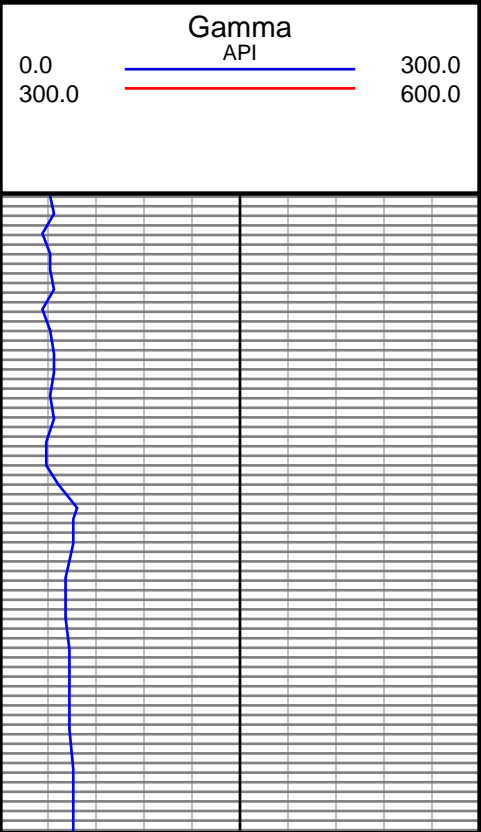
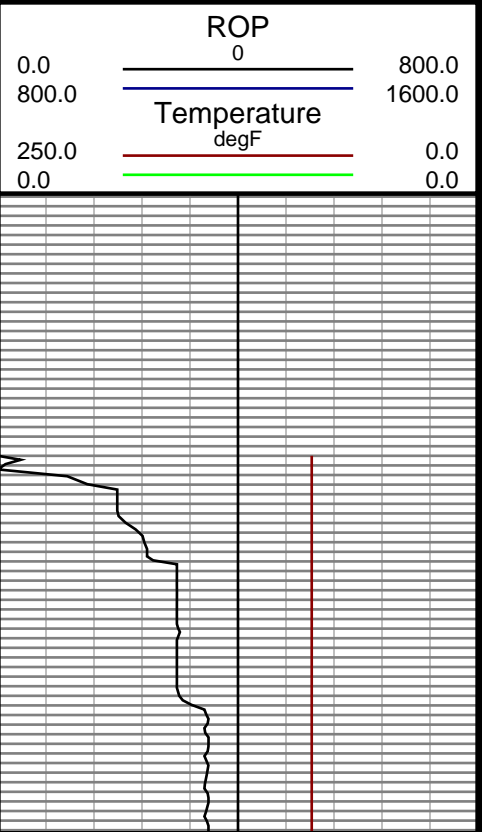
Log measurements: Gamma, ROP, Temp  
Depth measured from: 700  
Maximum temperature: 206

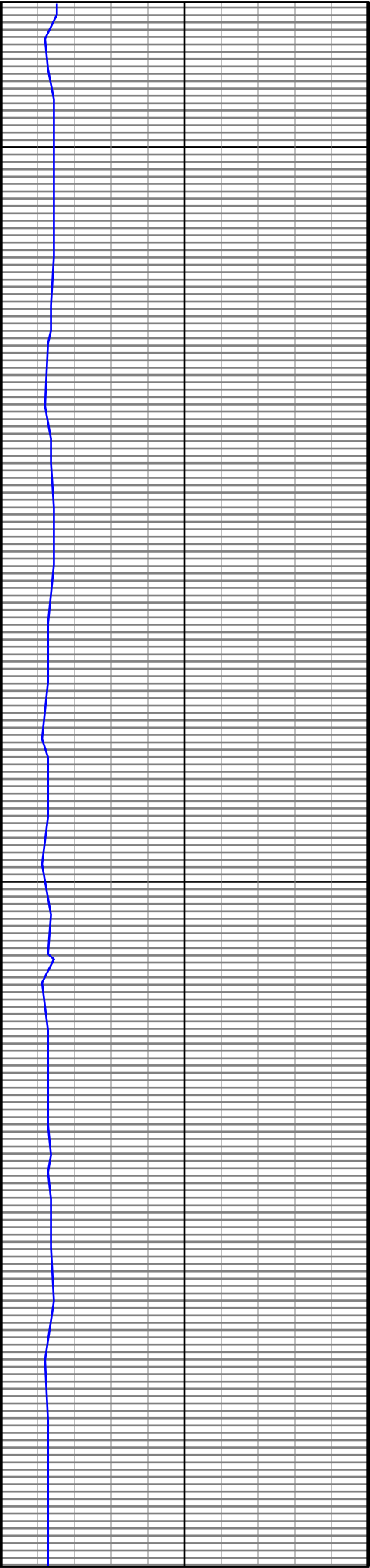
Casing Depth Size	Mud Type: WATER BASE	Elevations
Surface: 641 9.625	Density: 9.2	KB:
Intermediate: 7124 7.0	Viscosity: 32	GL:
	Rm:	DF:
	Rmf:	
	Rmc:	

Run	Bit Size	Offsets	Gamma Survey	Start	End	Start	End	Start	End
1	8 3/4	39.00	56.00	641	6187	9/28/2013	9/29/2013		
2	8 3/4	38.00	55.00	6187	7136	9/29/2013	9/30/2013		
3	6 1/8	44.00	61.00	7136	11244	10/2/2013	10/4/2013		
4									
5									
6									
7									
8									
9									
10									

DRILTECH, LLC uses its best efforts to provide its customers with accurate information and interpretations in conjunction with services performed but will not be held liable or responsible for the accuracy of such information or interpretation.

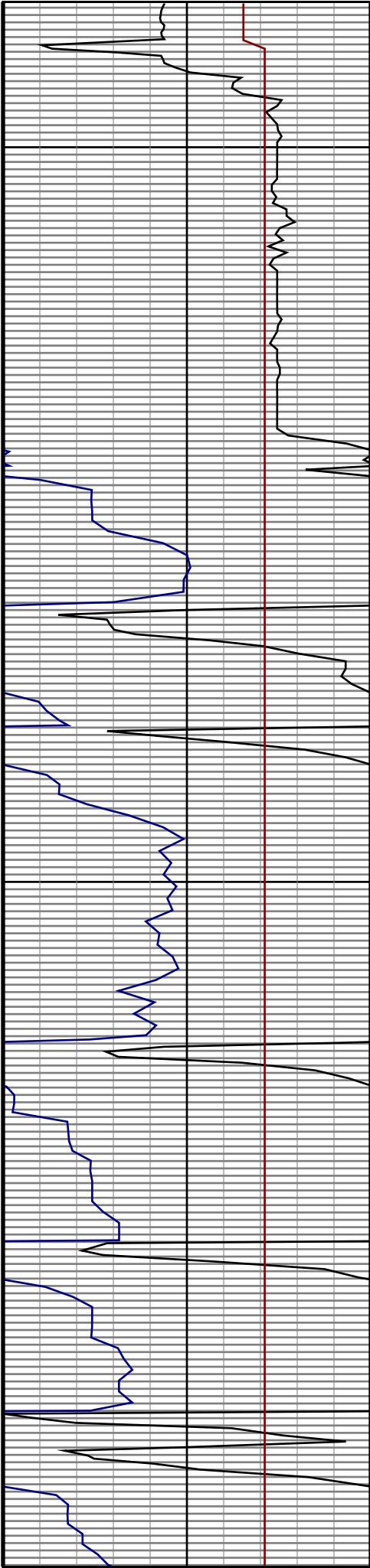
TVD





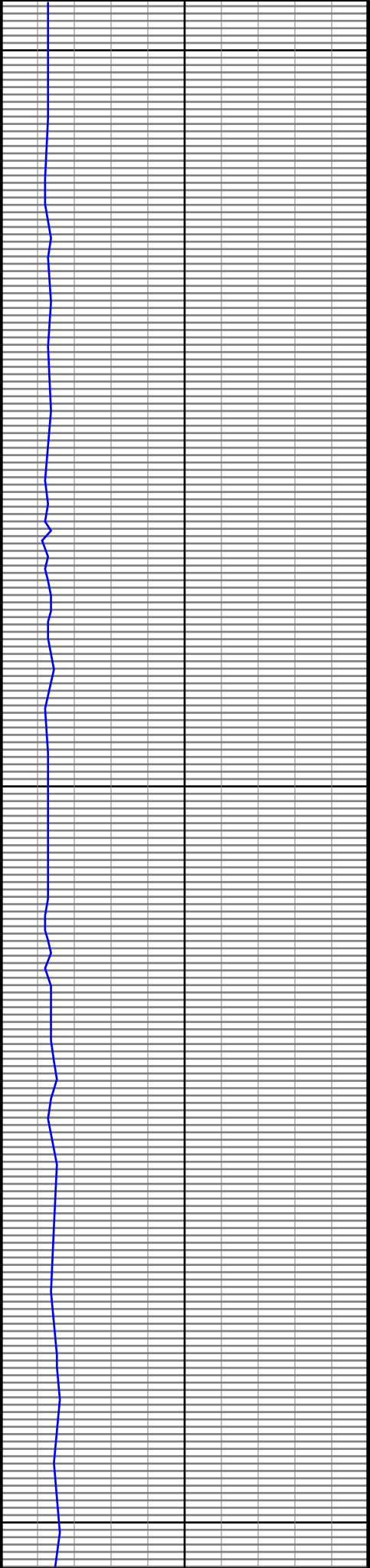
700

800



700

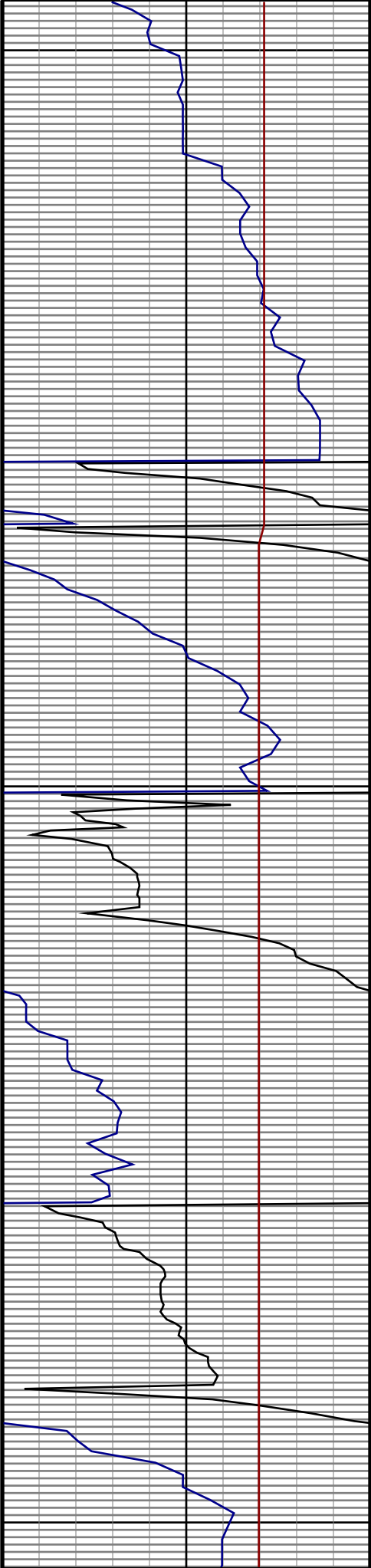
800

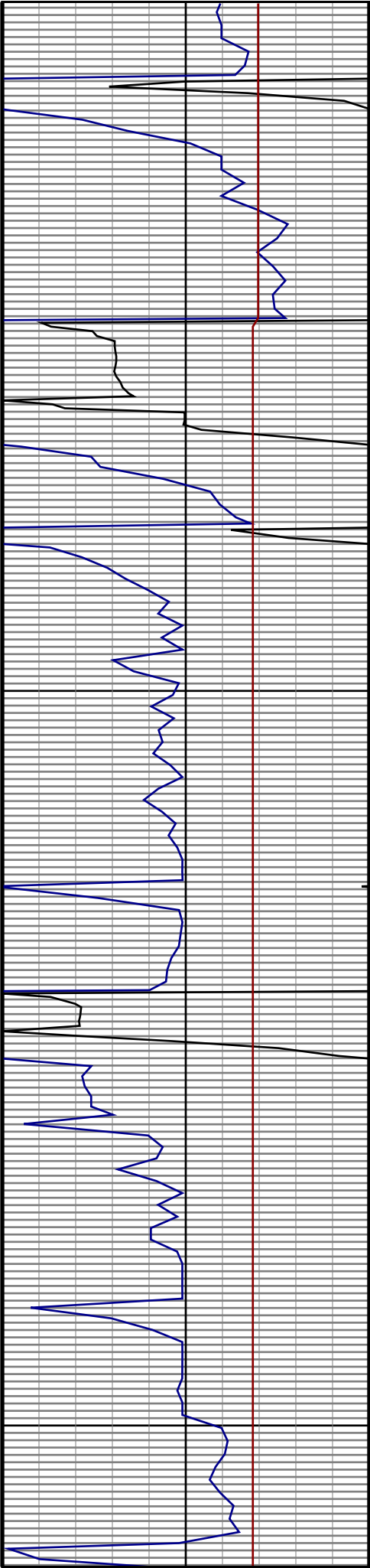
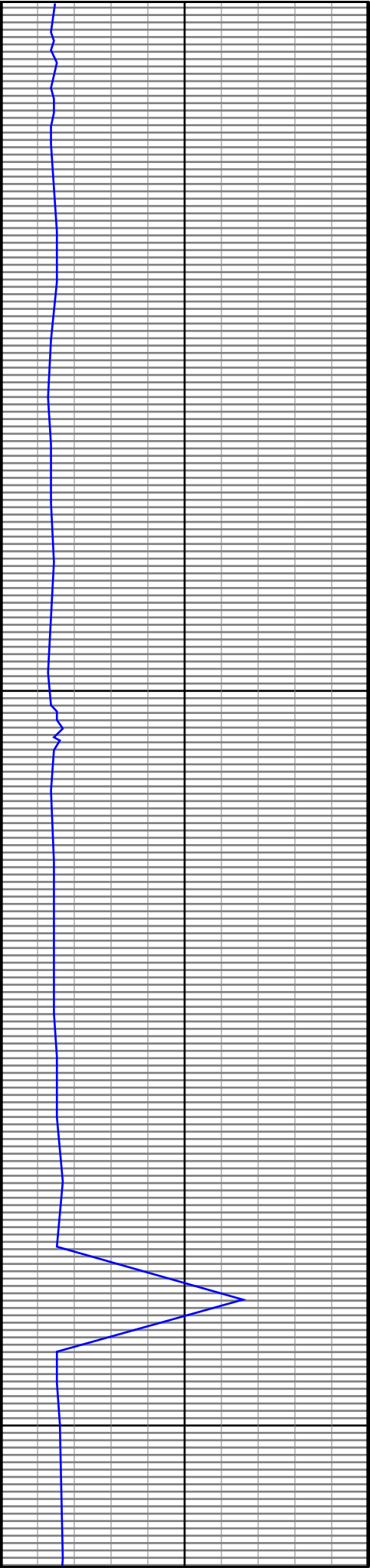


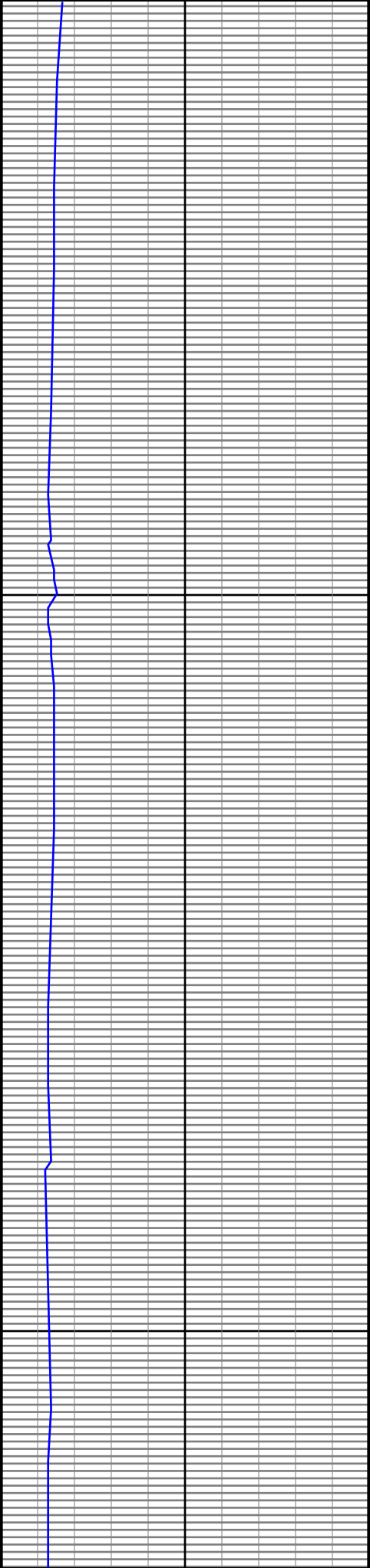
900

1000

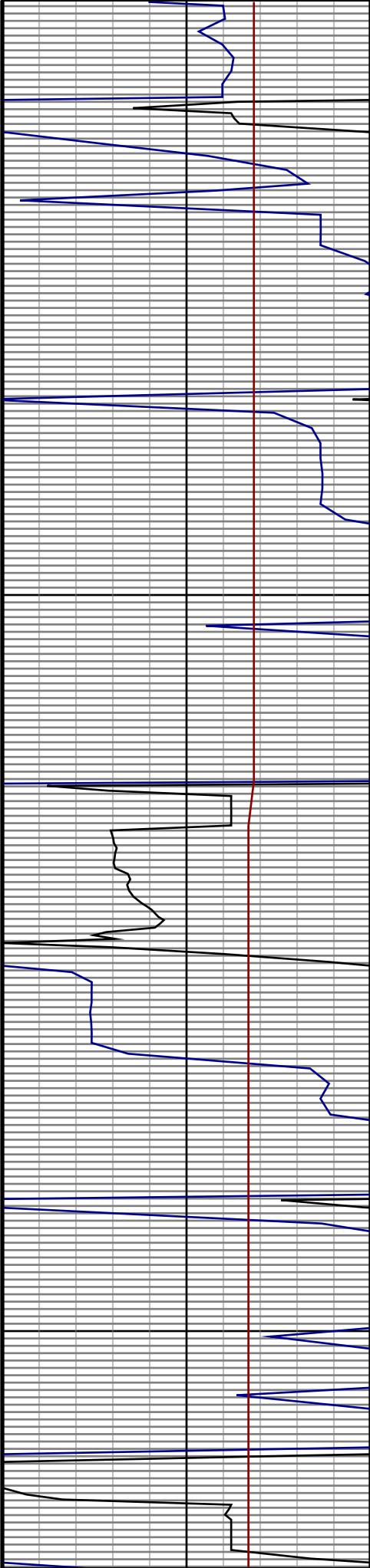
1100



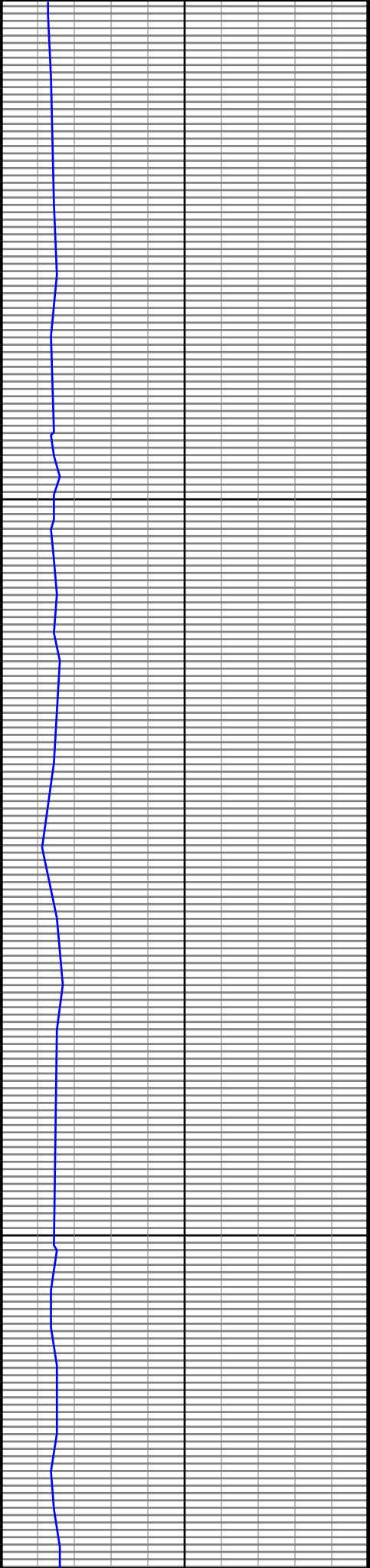




1400

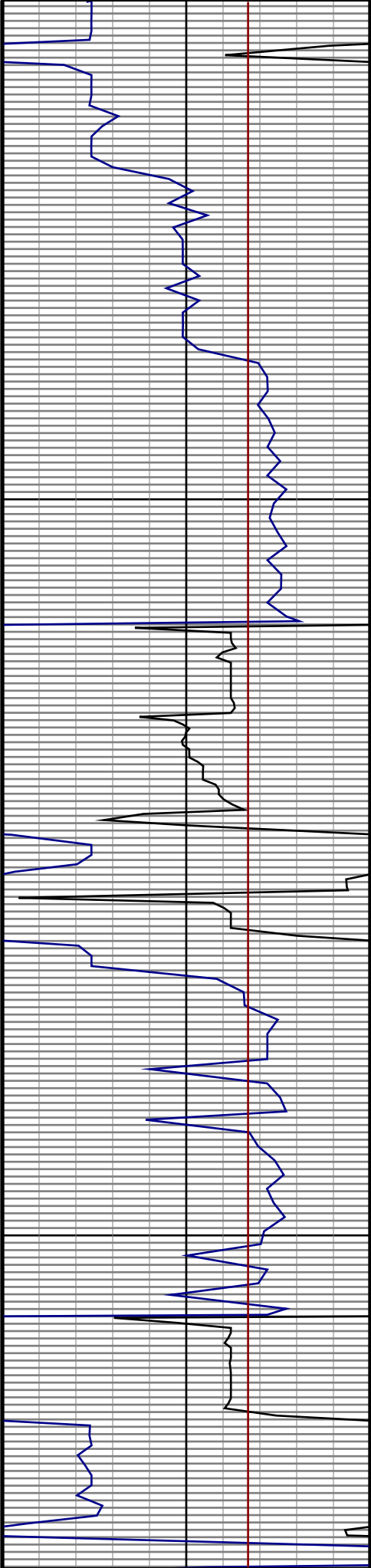


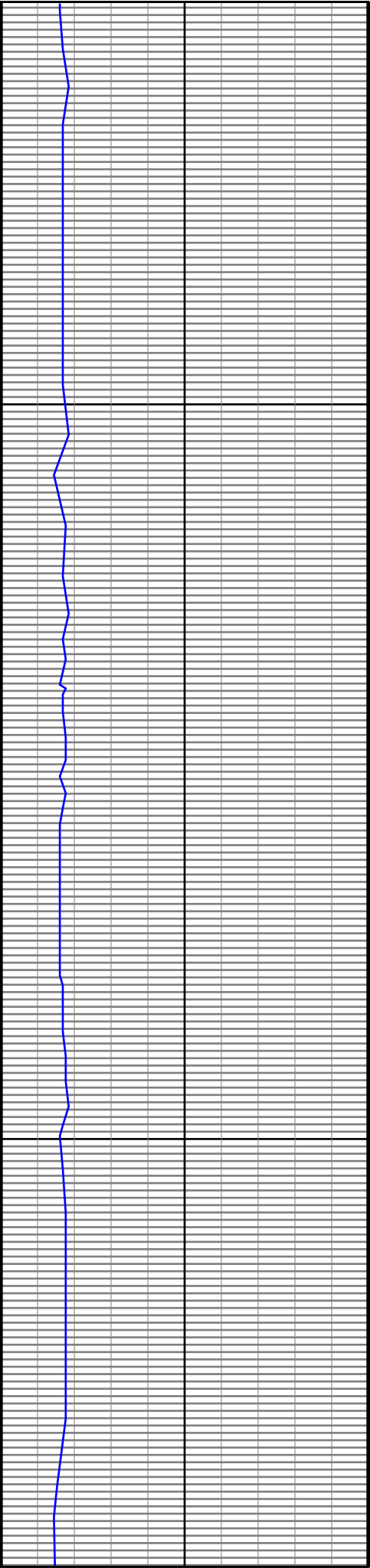
1500



1600

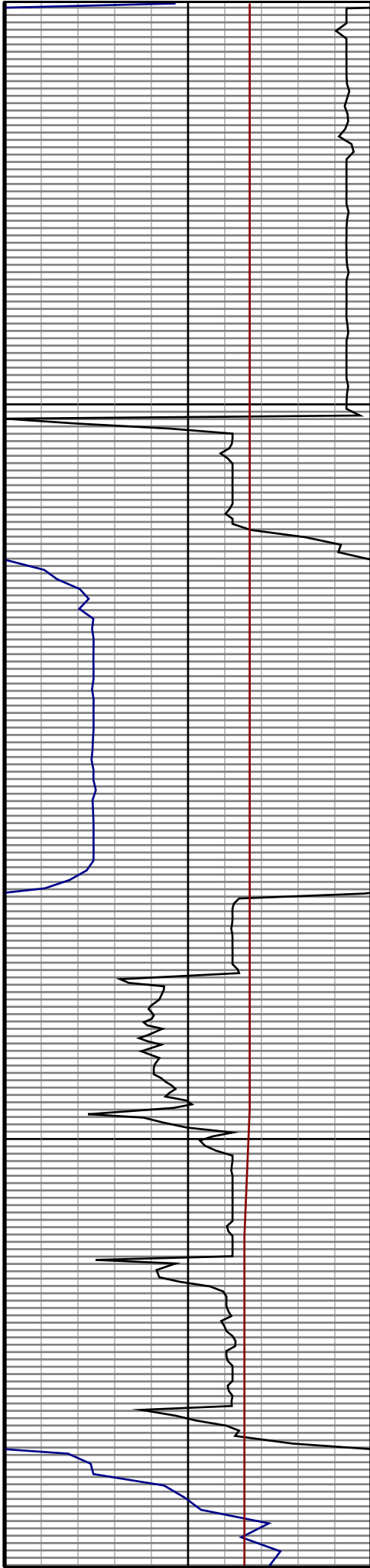
1700

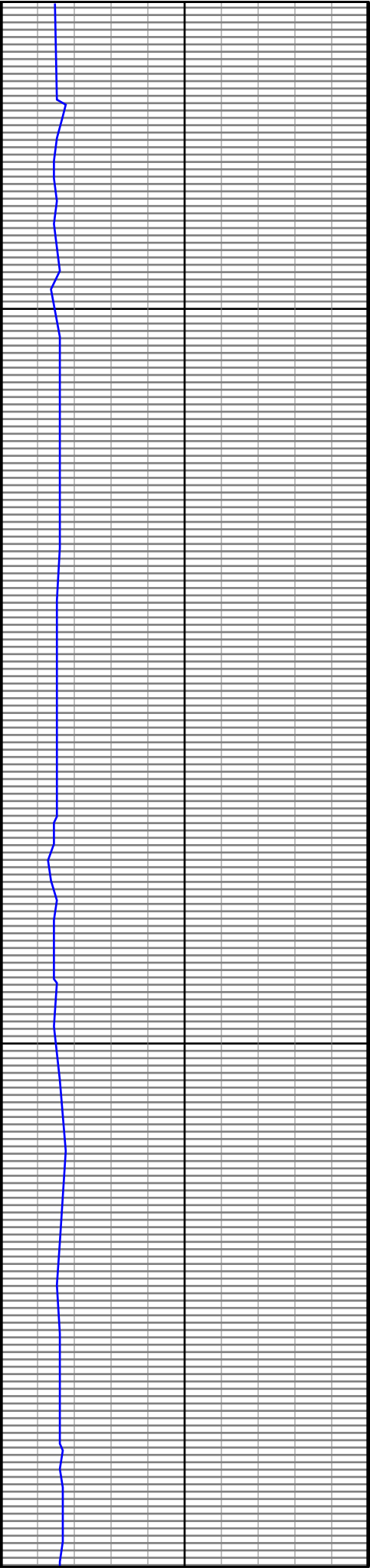




1800

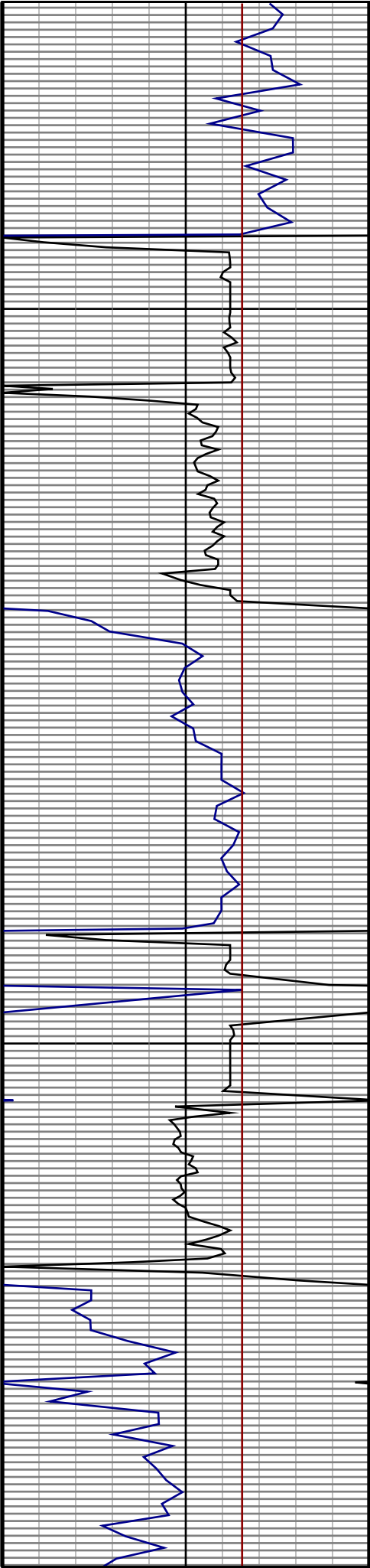
1900



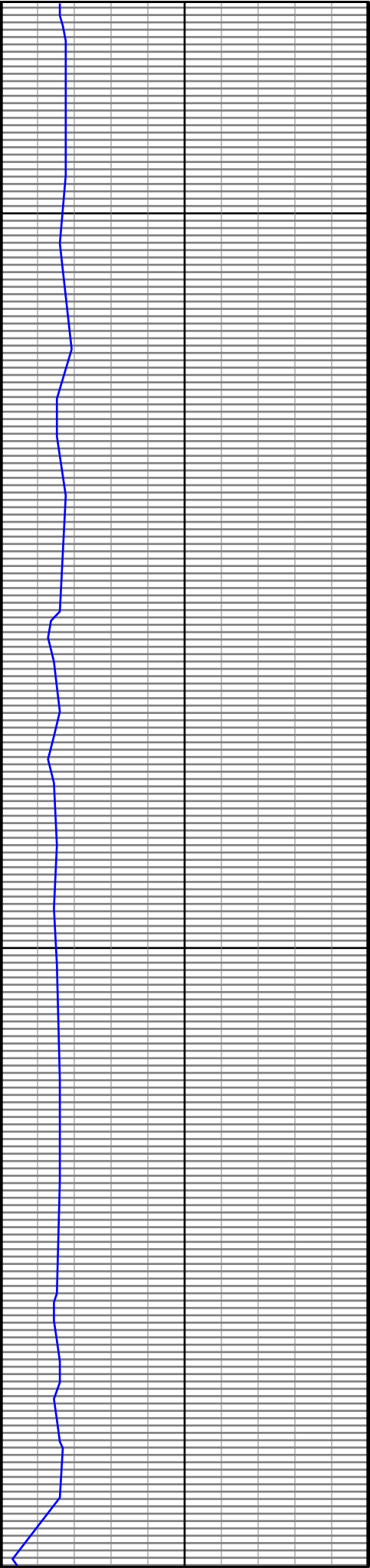


2000

2100

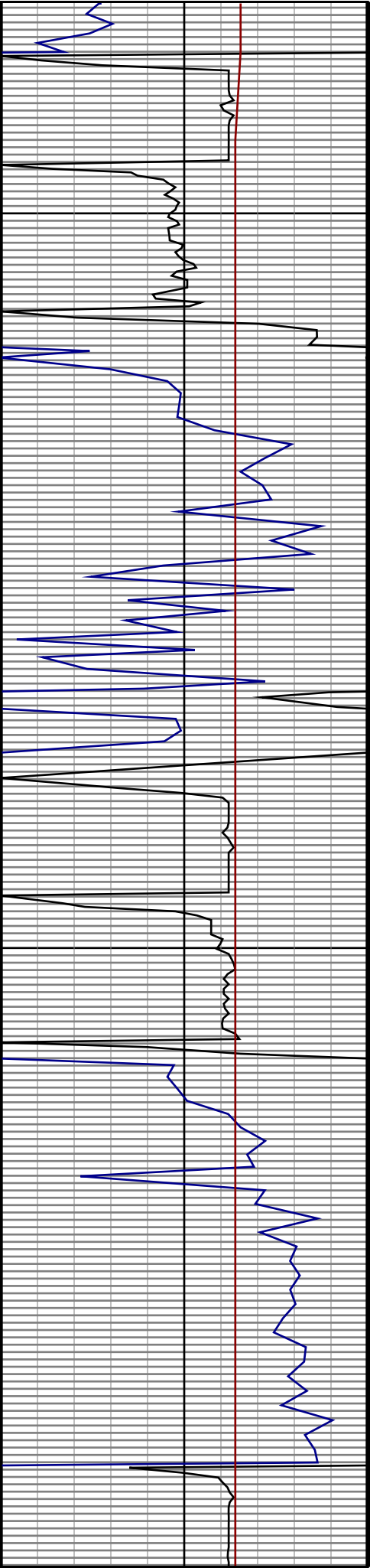


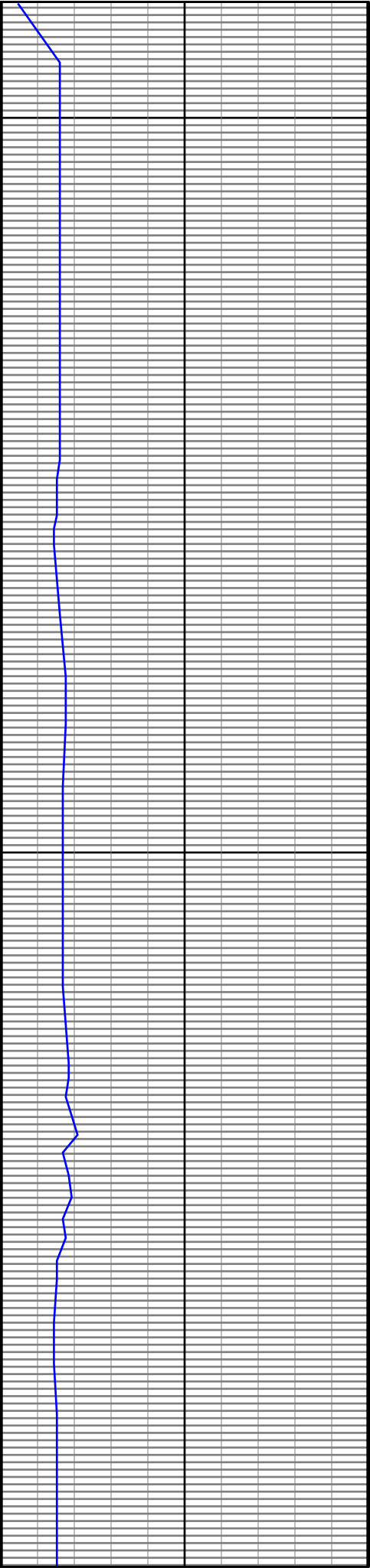




2200

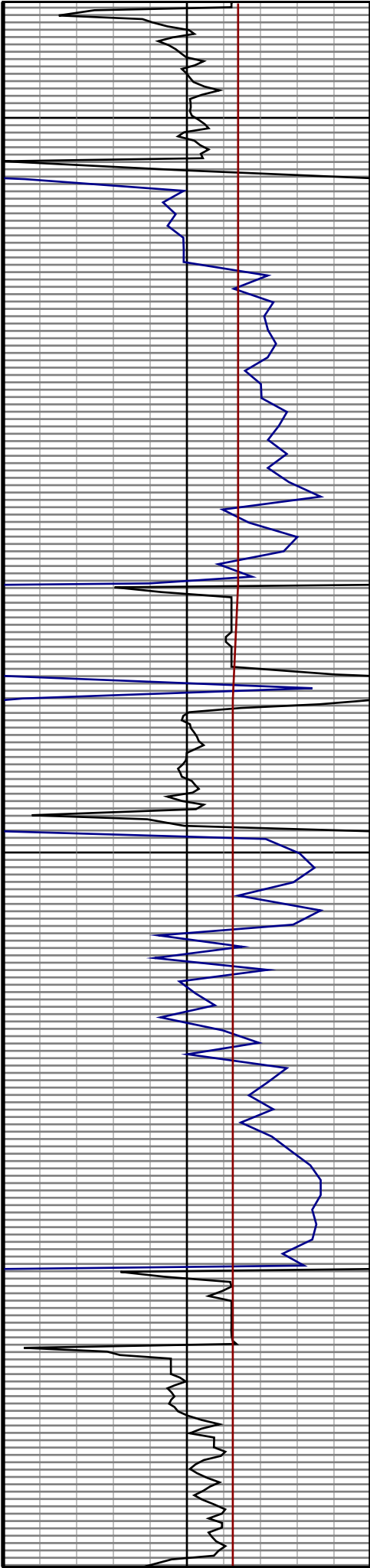
2300

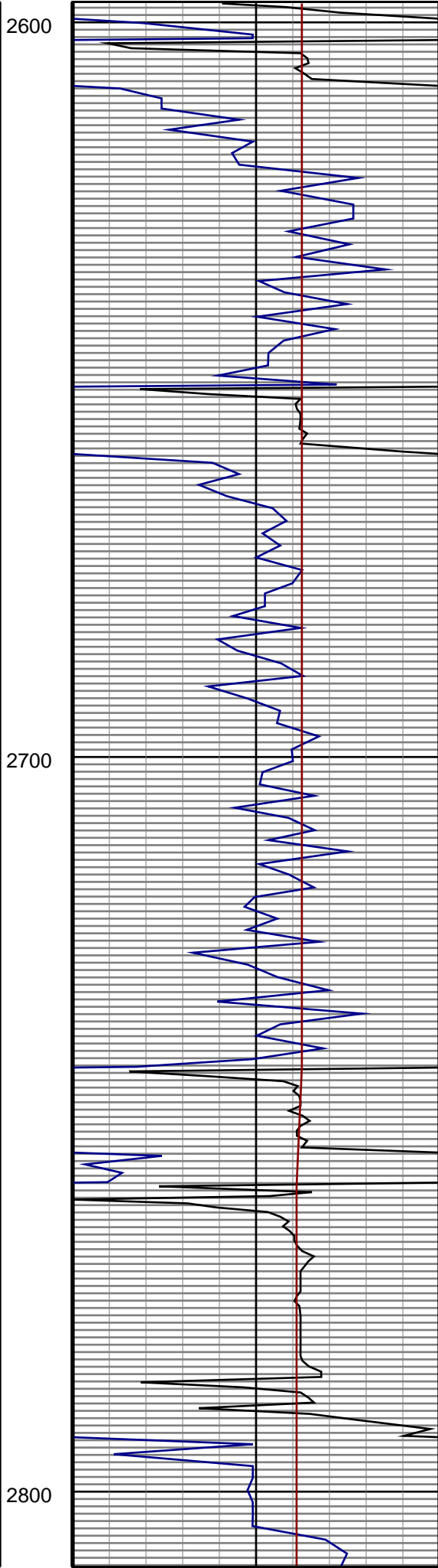
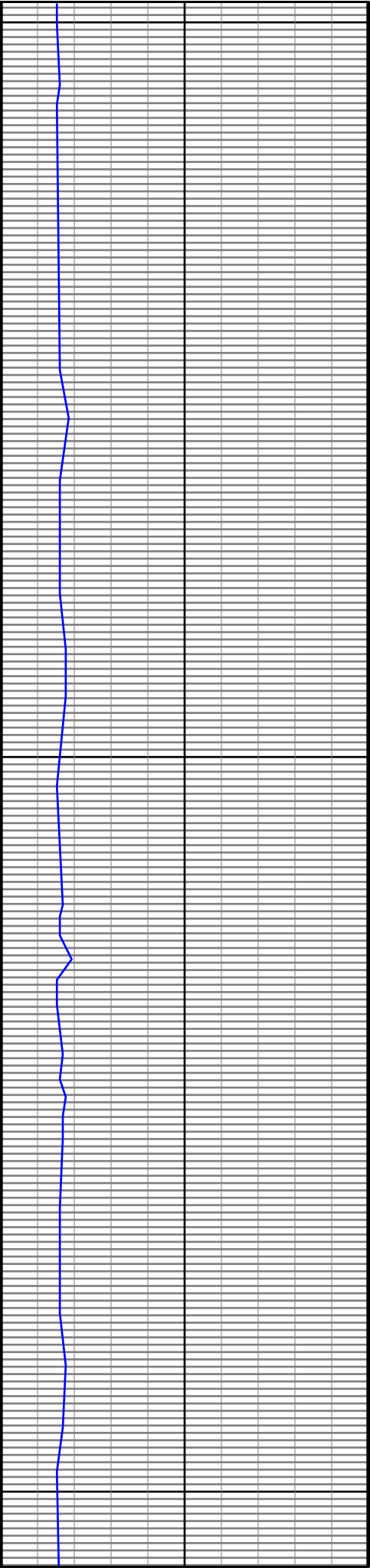


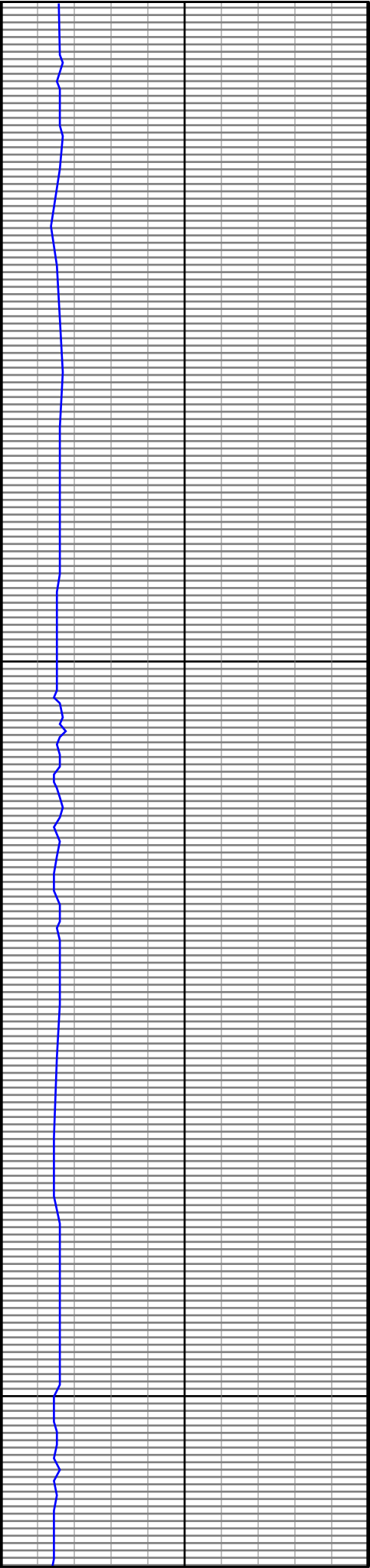


2400

2500

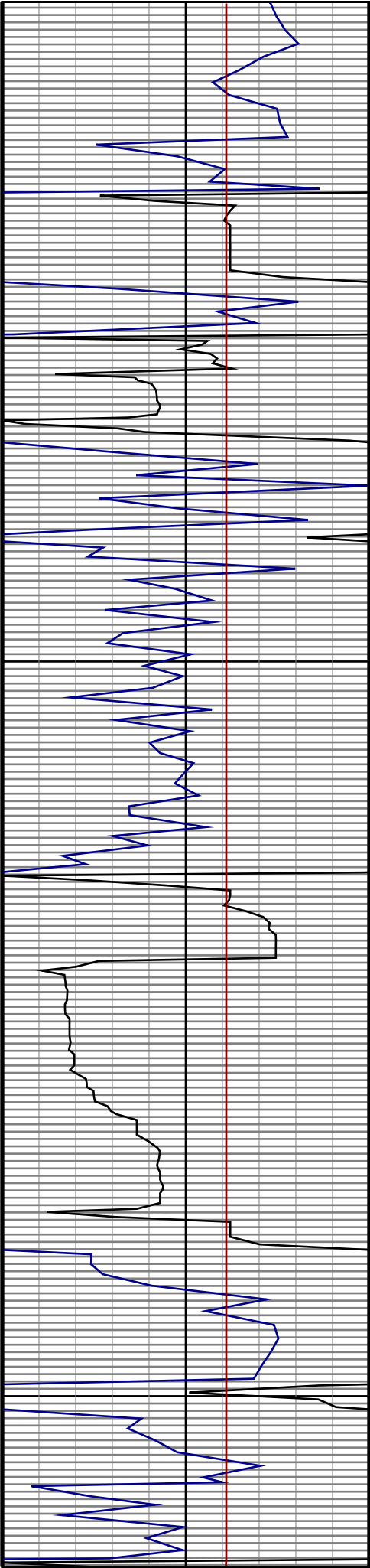


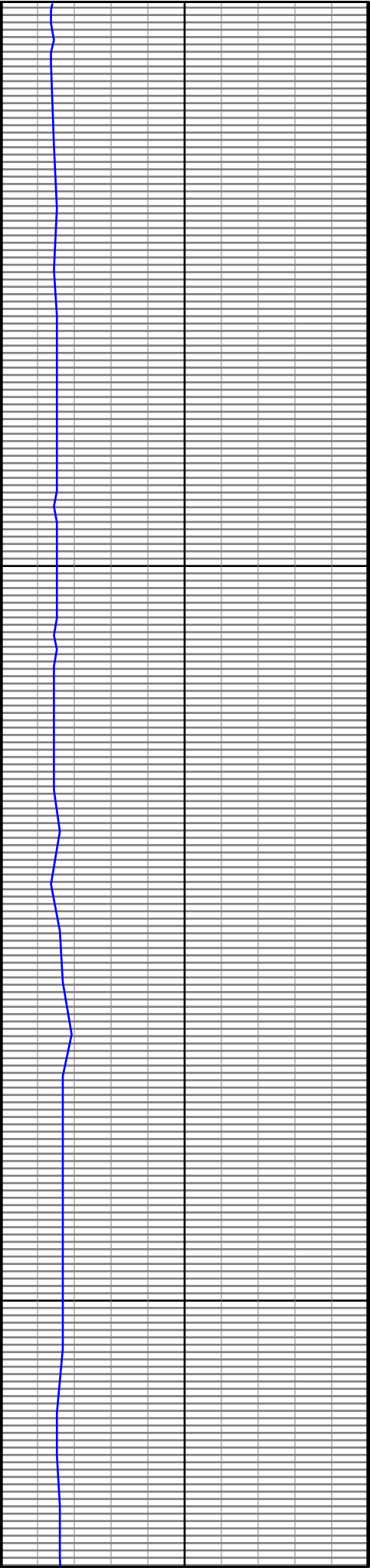




2900

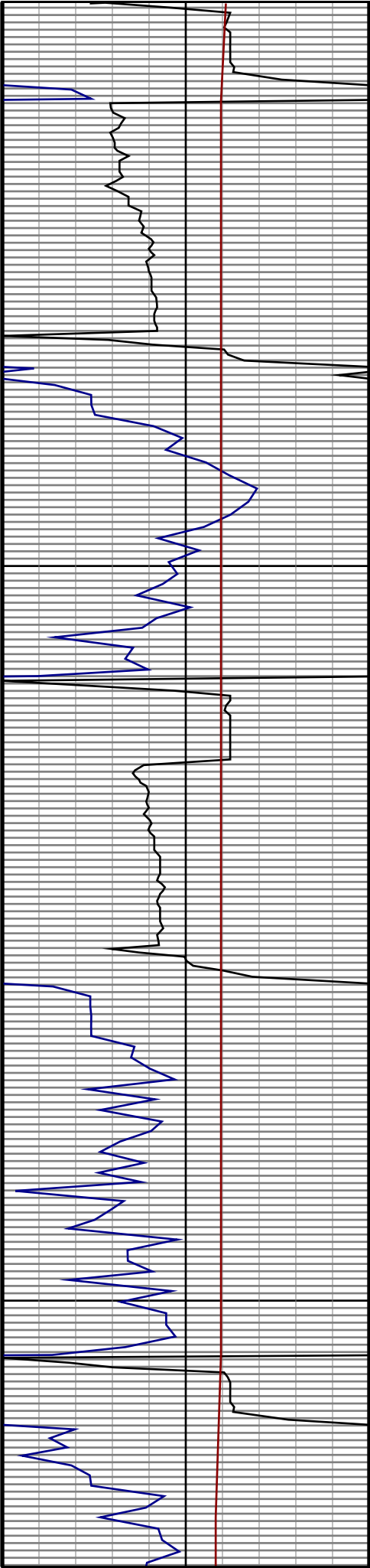
3000

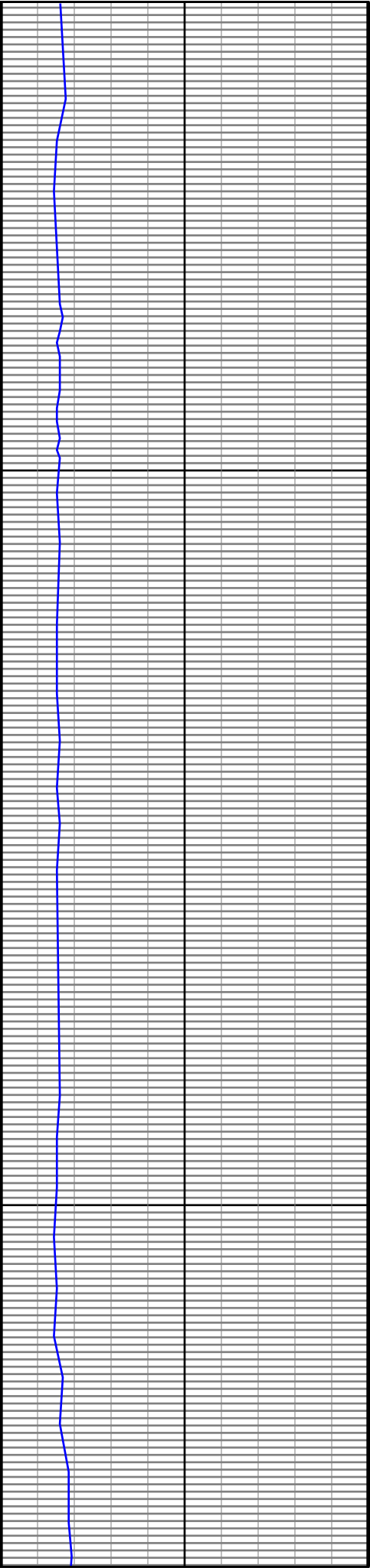




3100

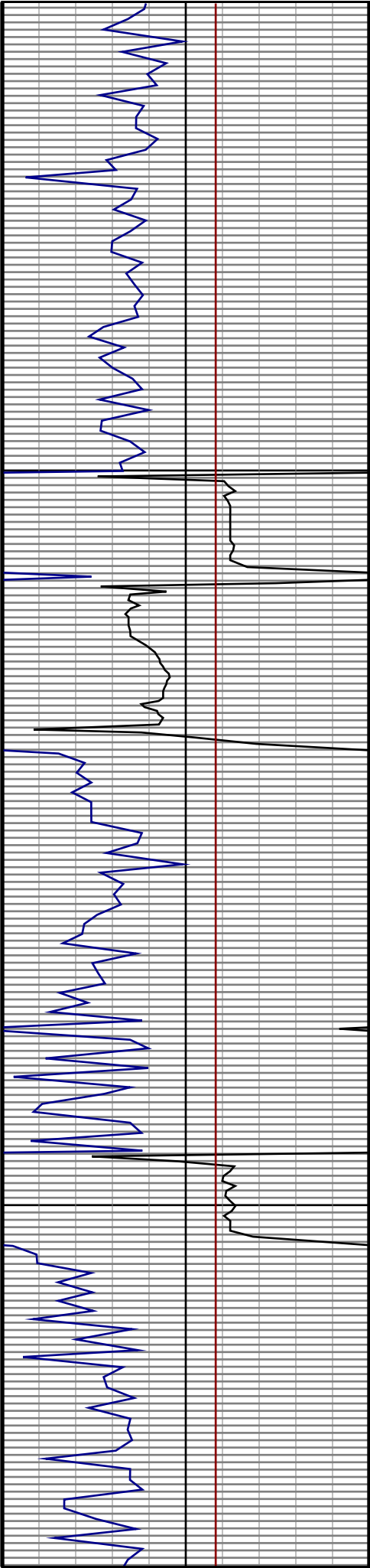
3200

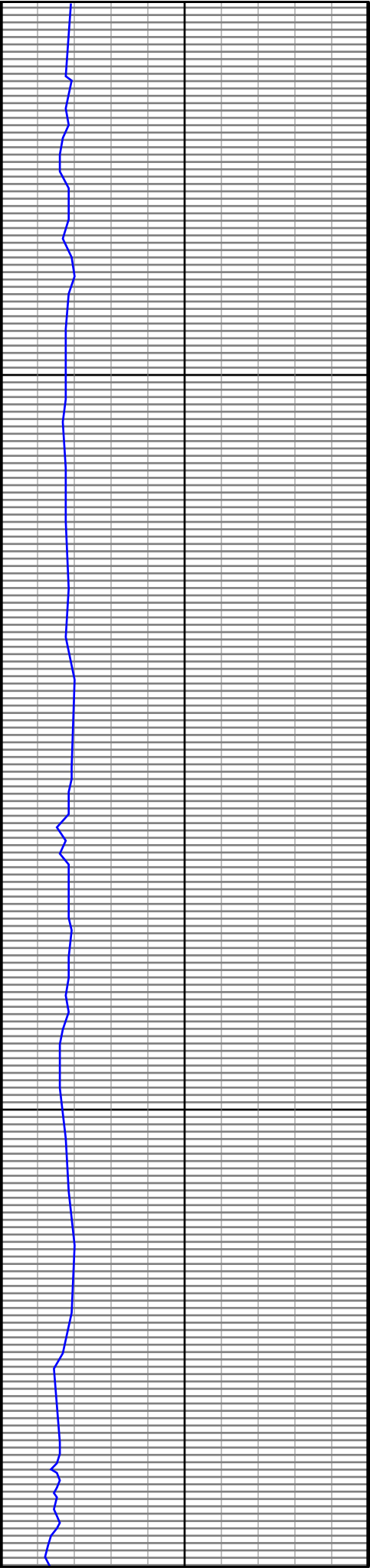




3300

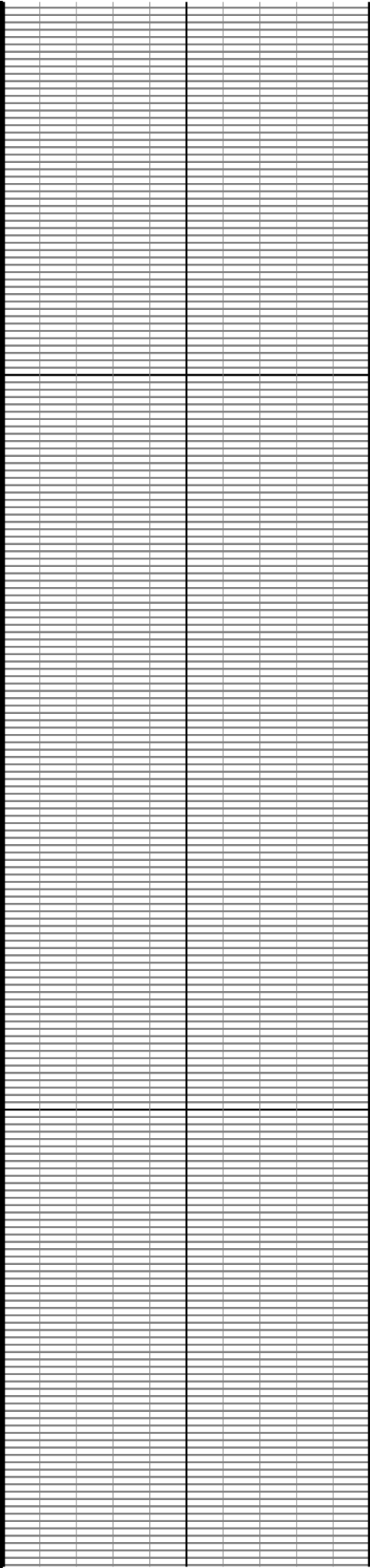
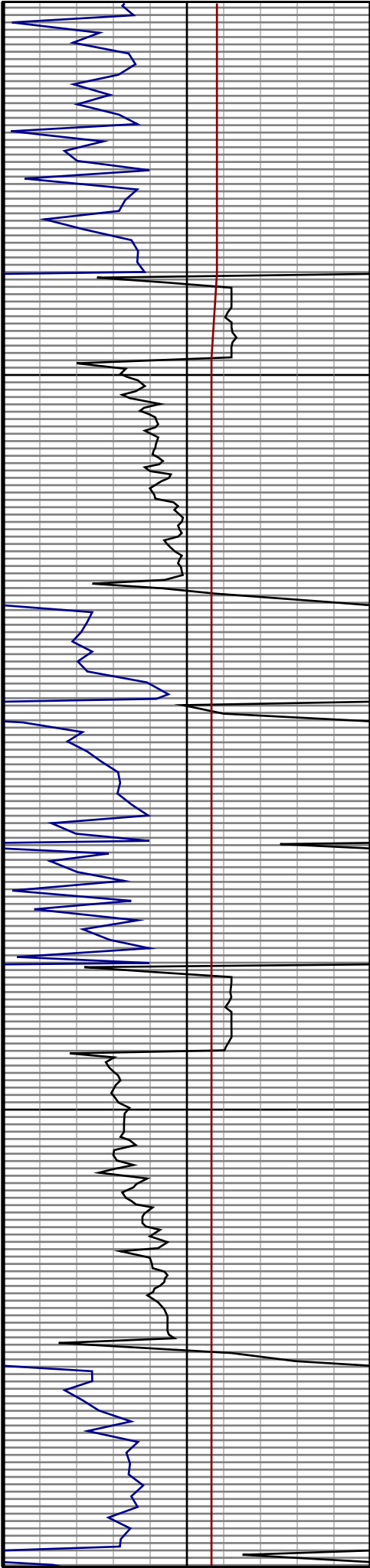
3400

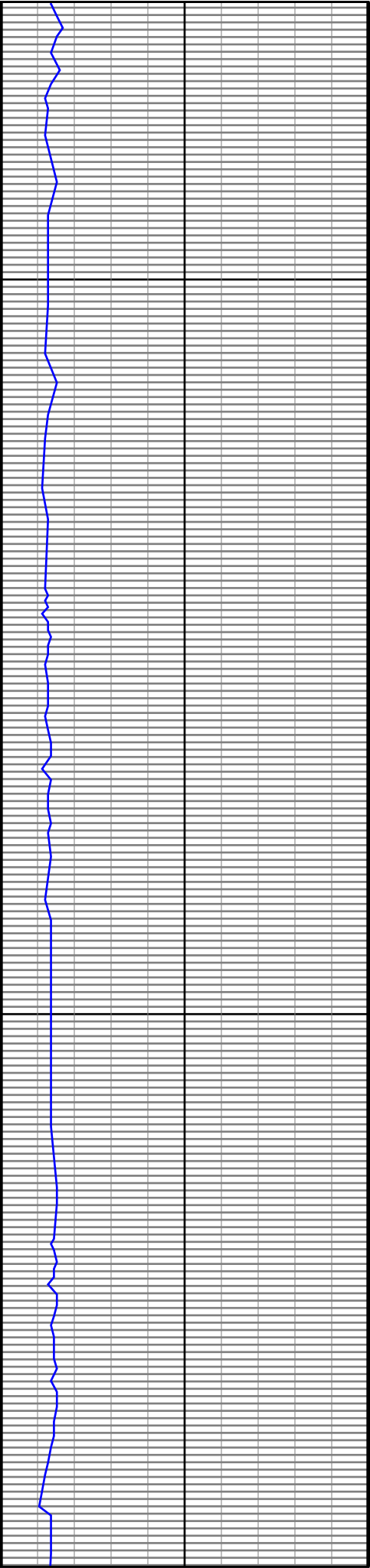




3500

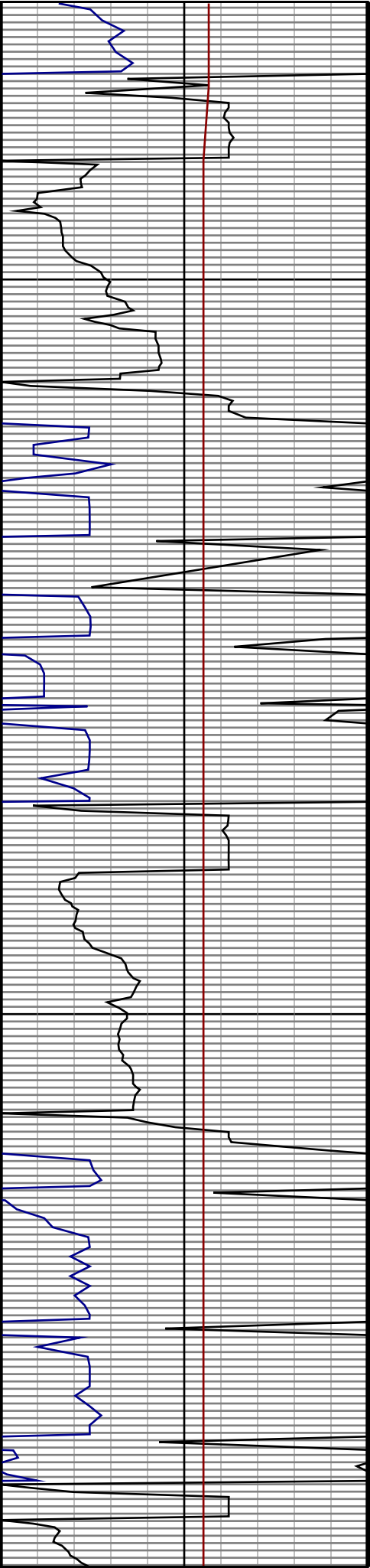
3600



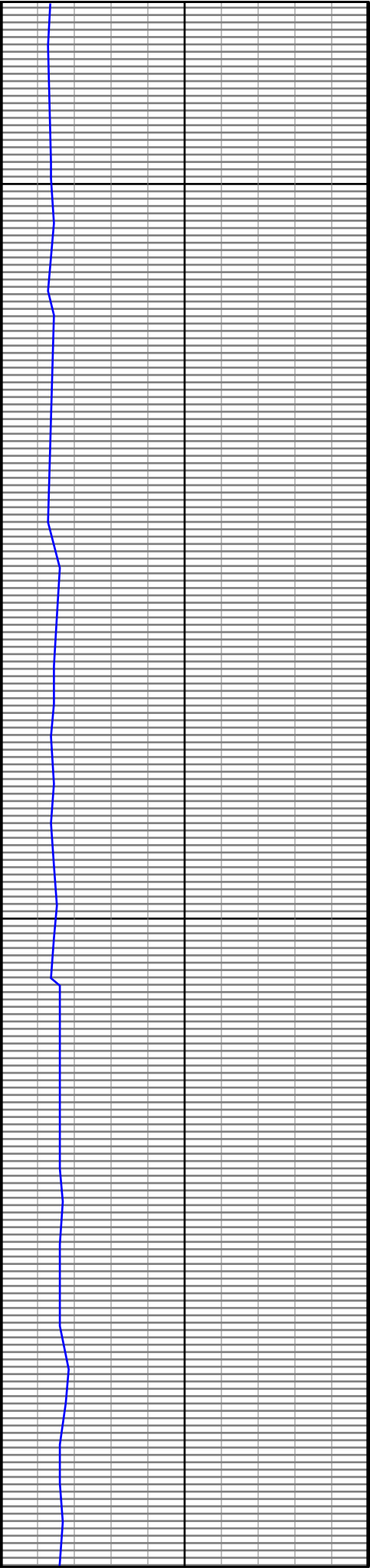


3700

3800

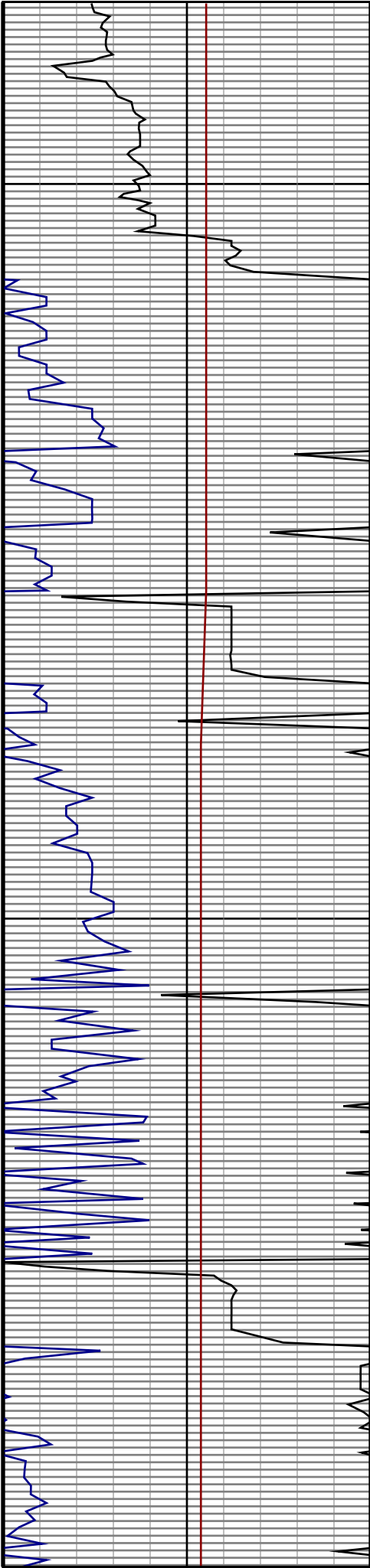


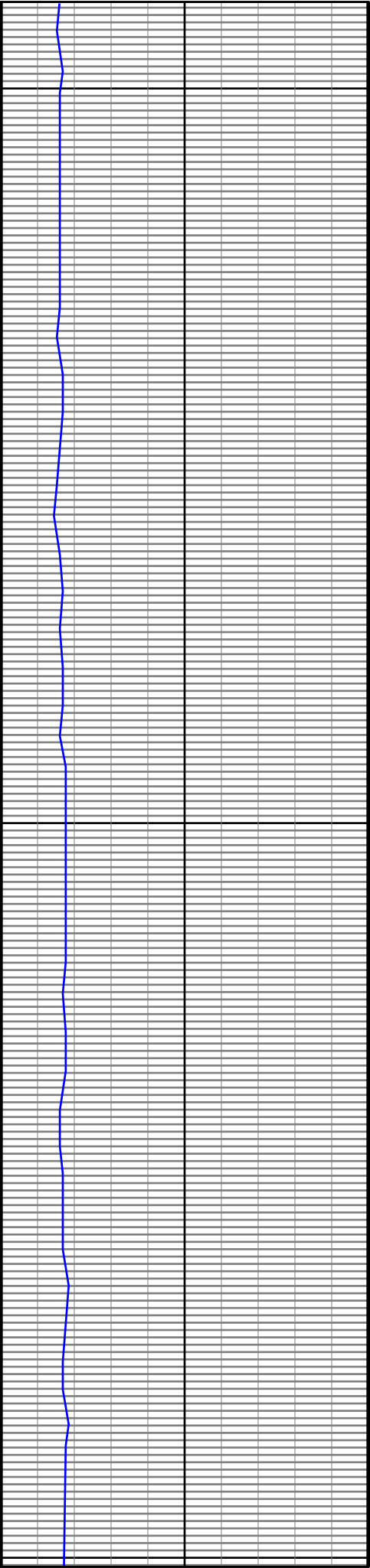




3900

4000

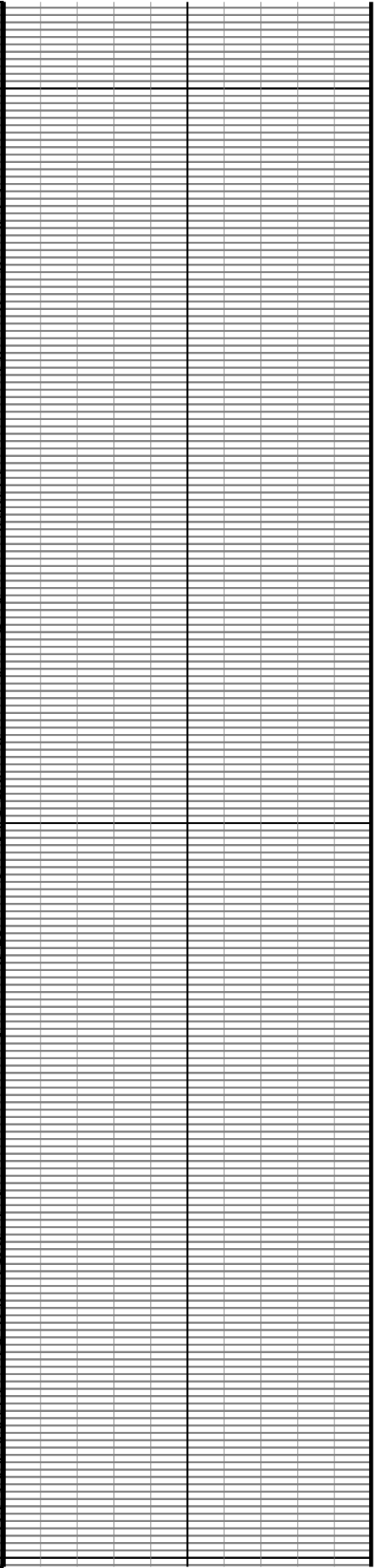
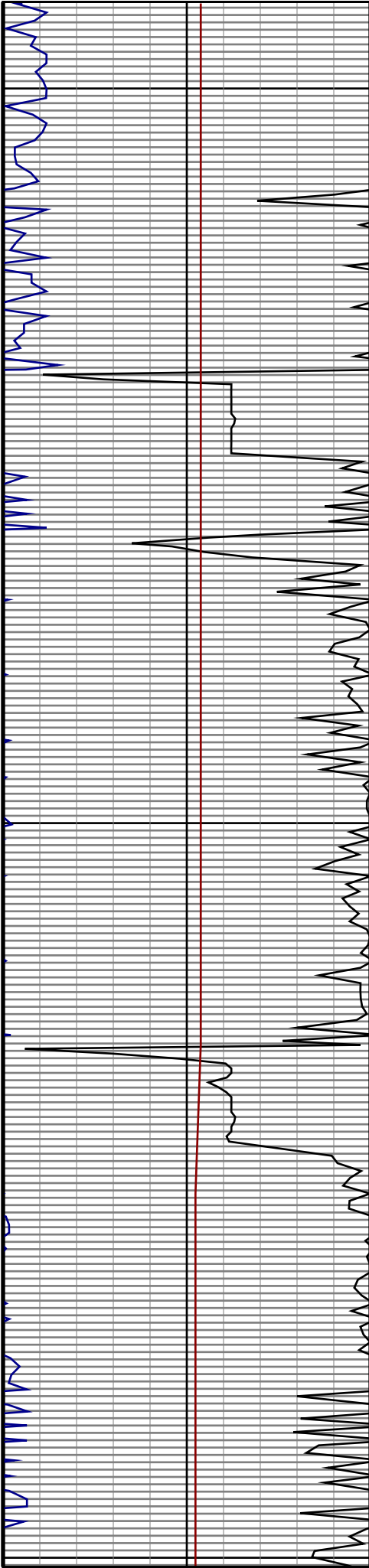


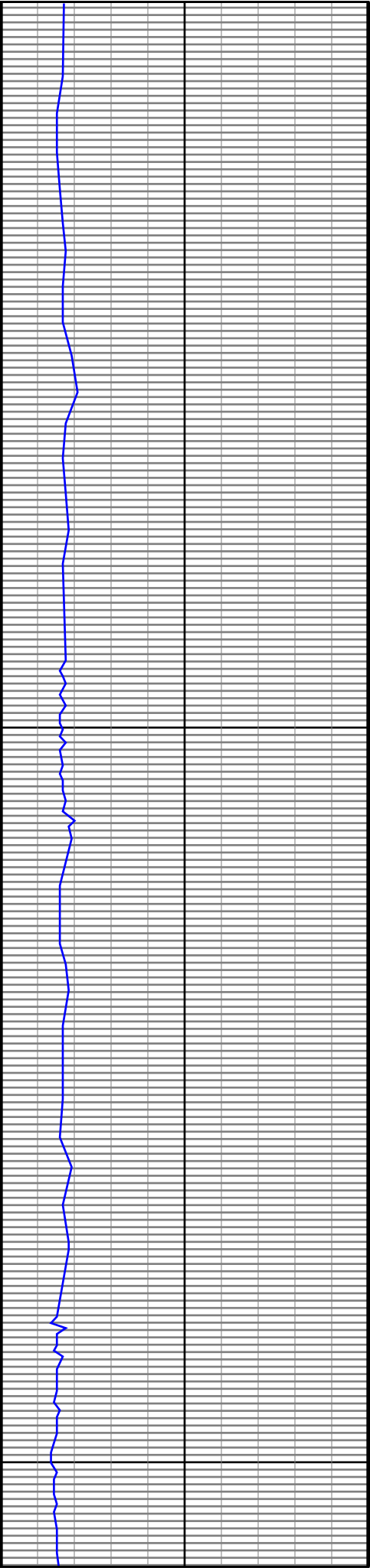


4100

4200

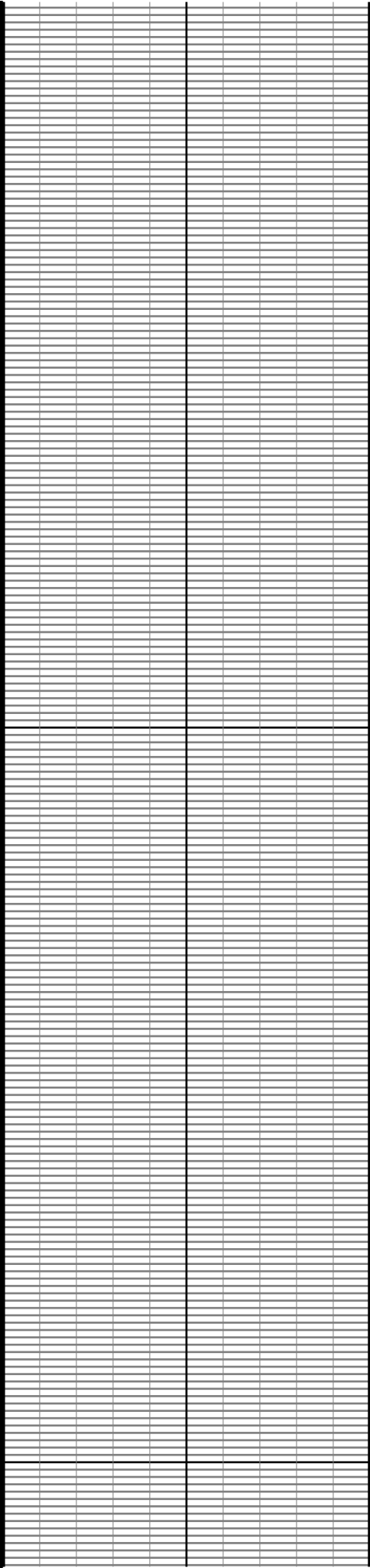
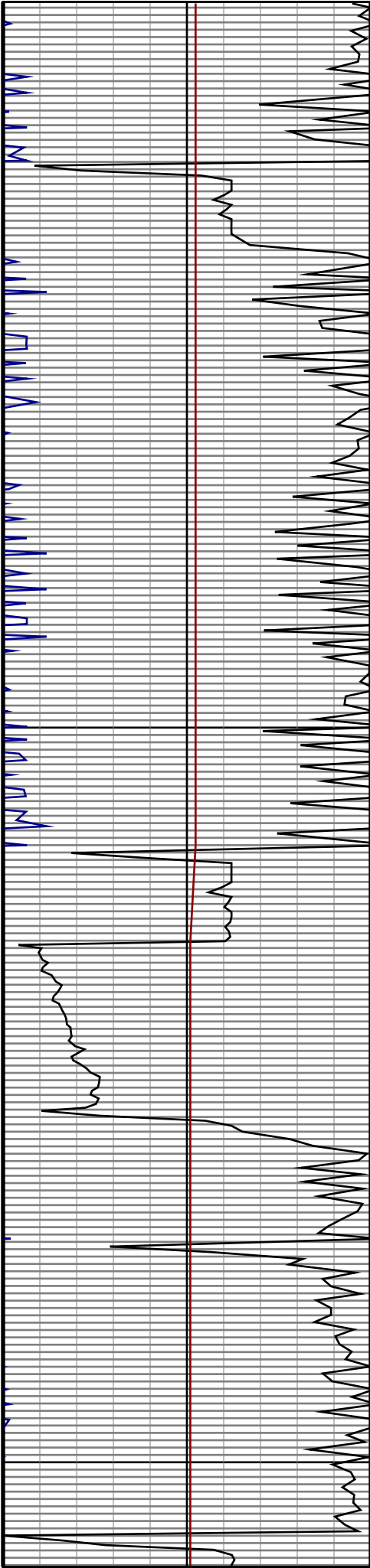
4300

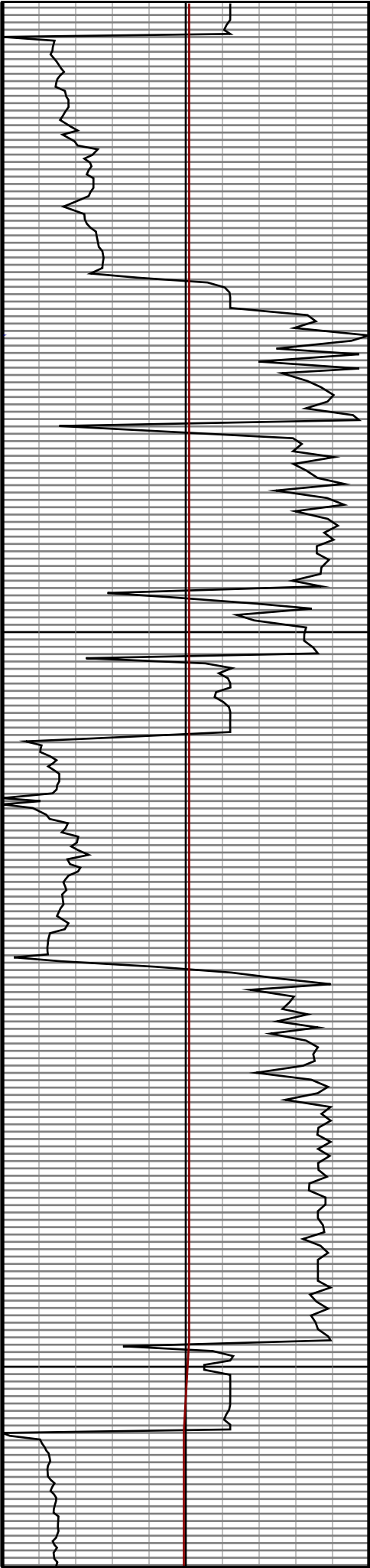
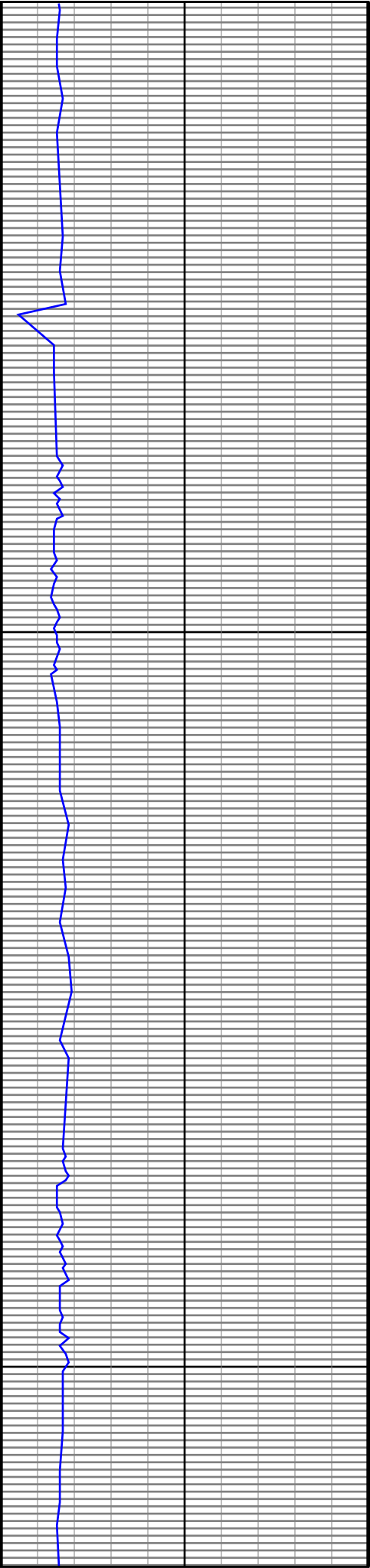


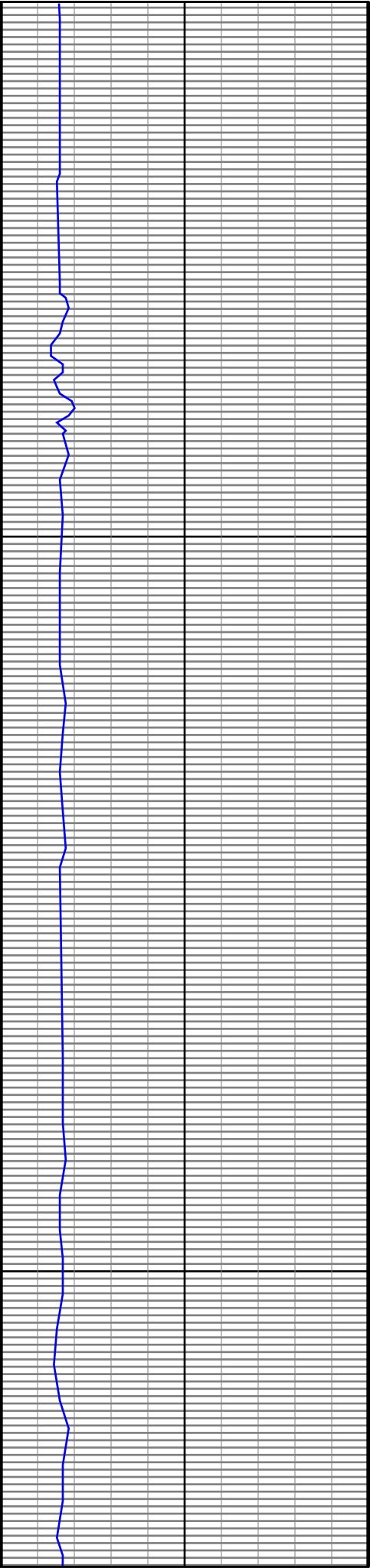


4400

4500

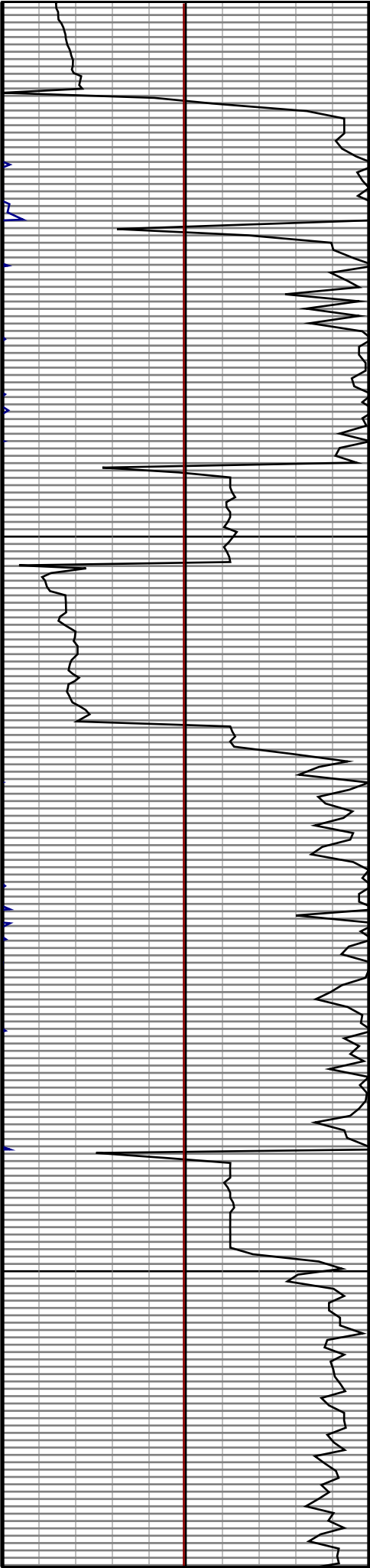


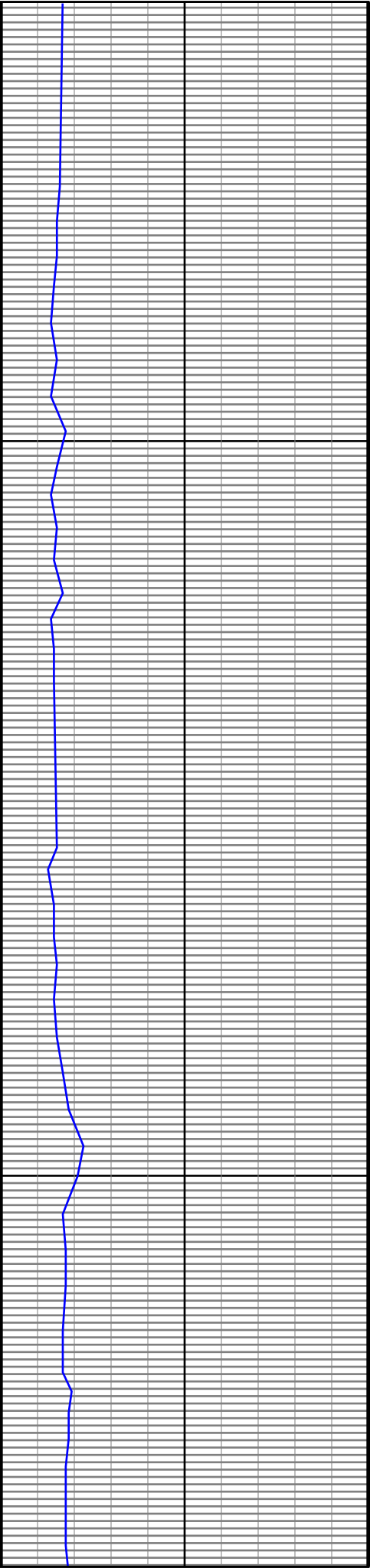




4800

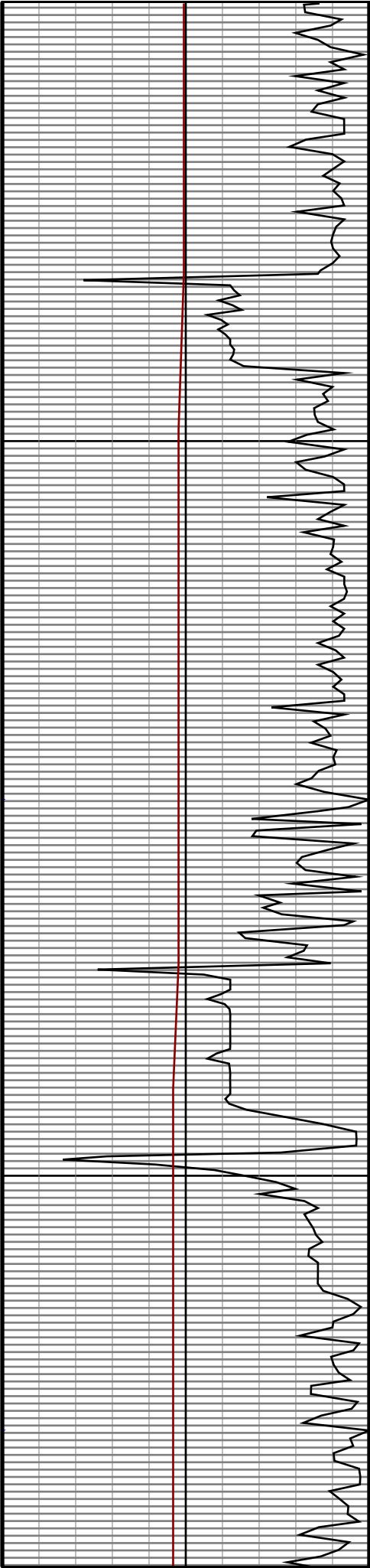
4900

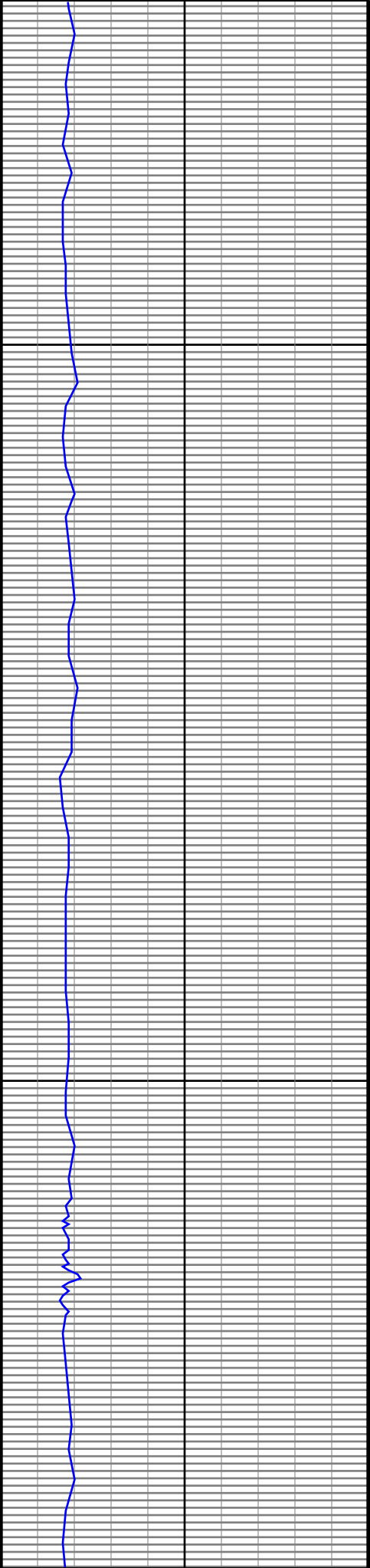




5000

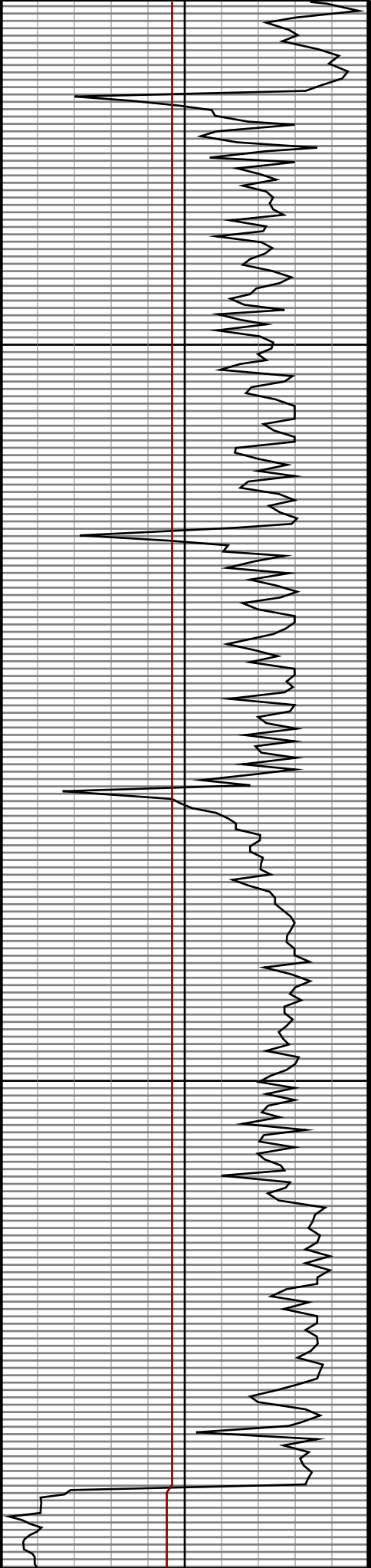
5100

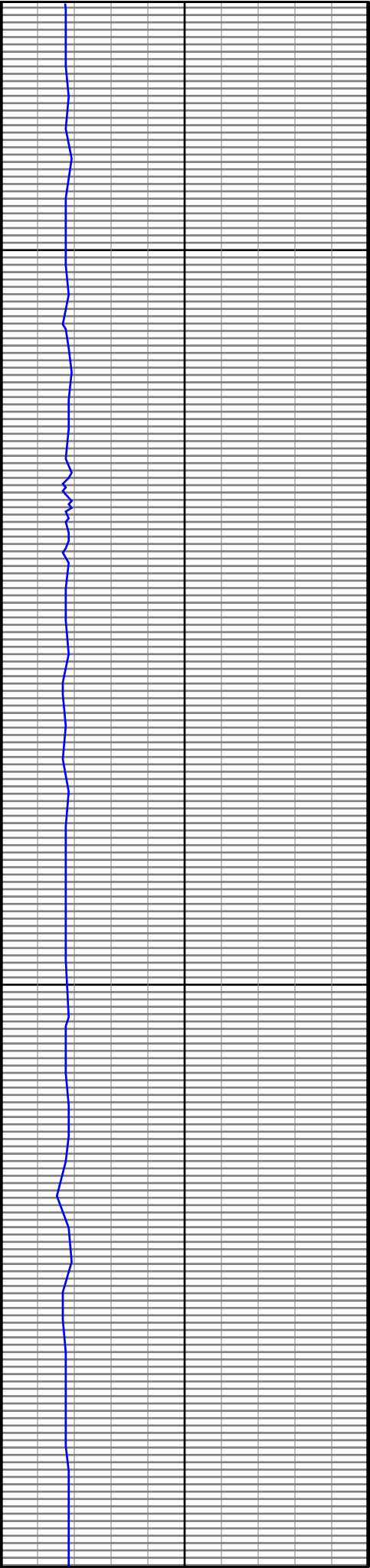




5200

5300



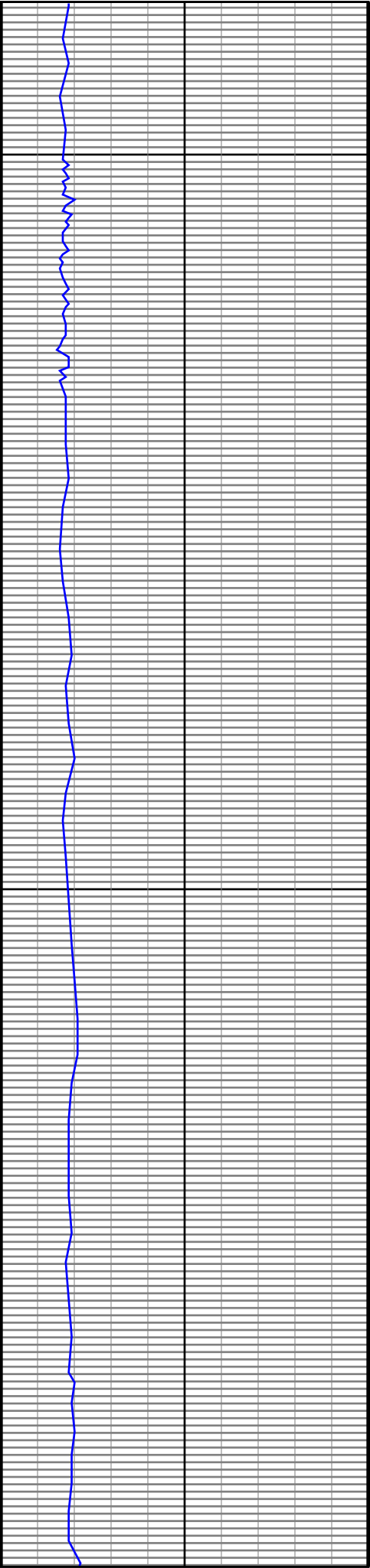


5400

5500

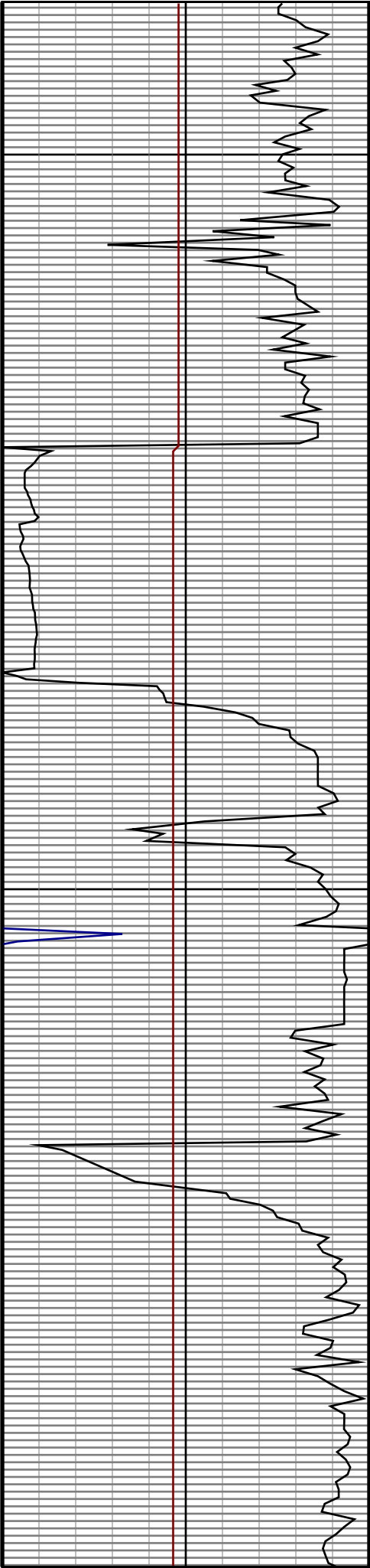


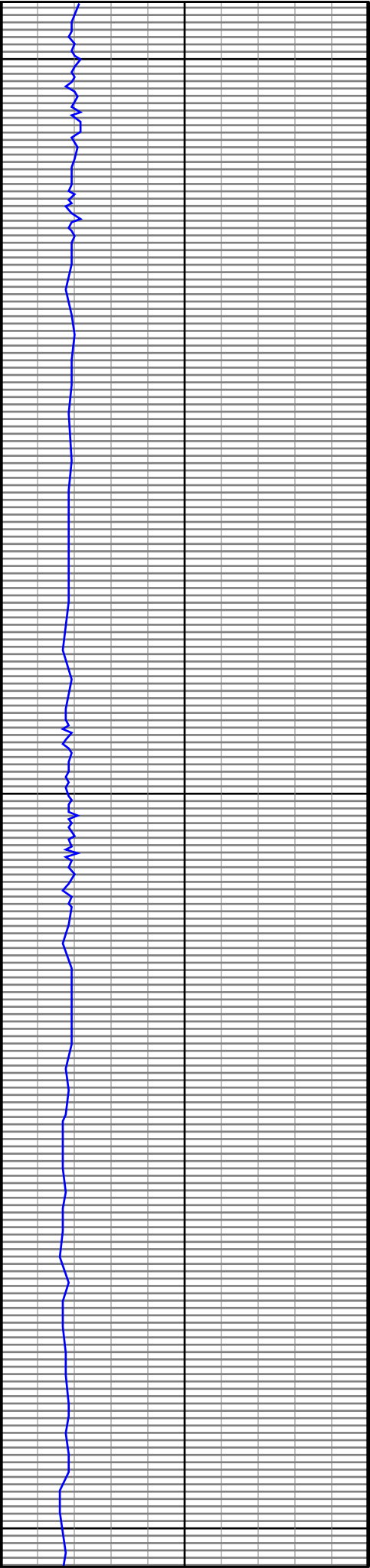




5600

5700

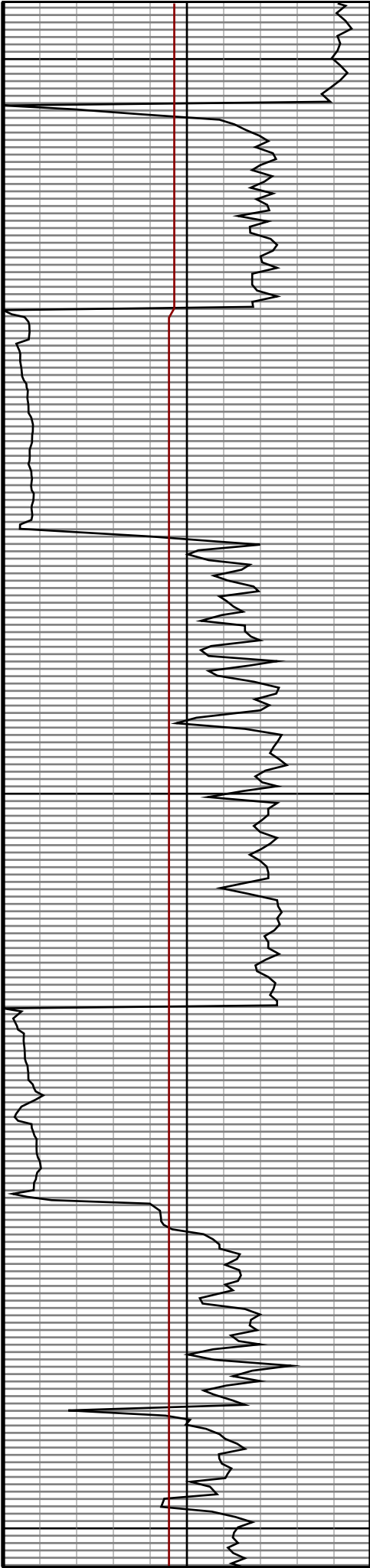


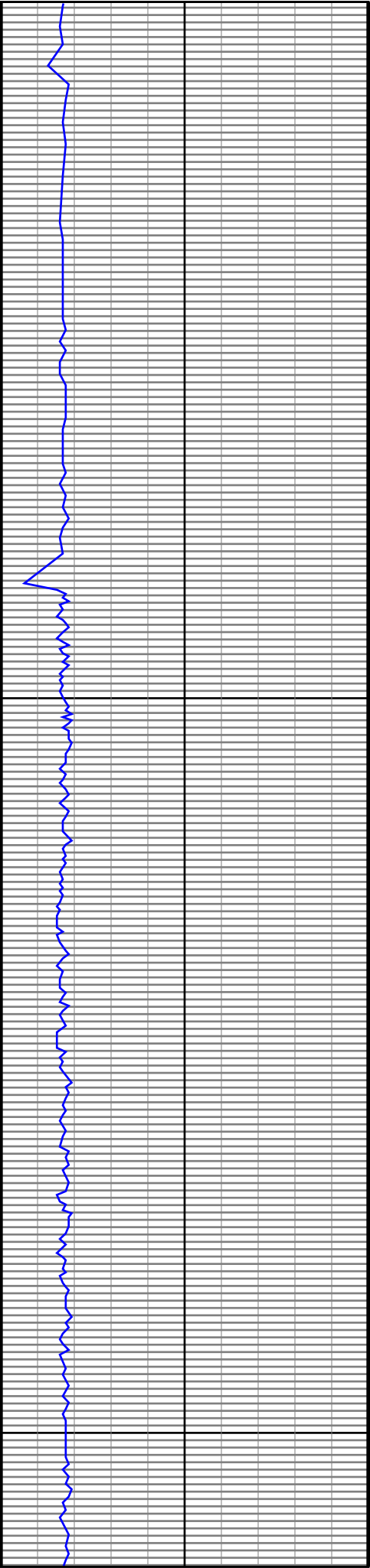


5800

5900

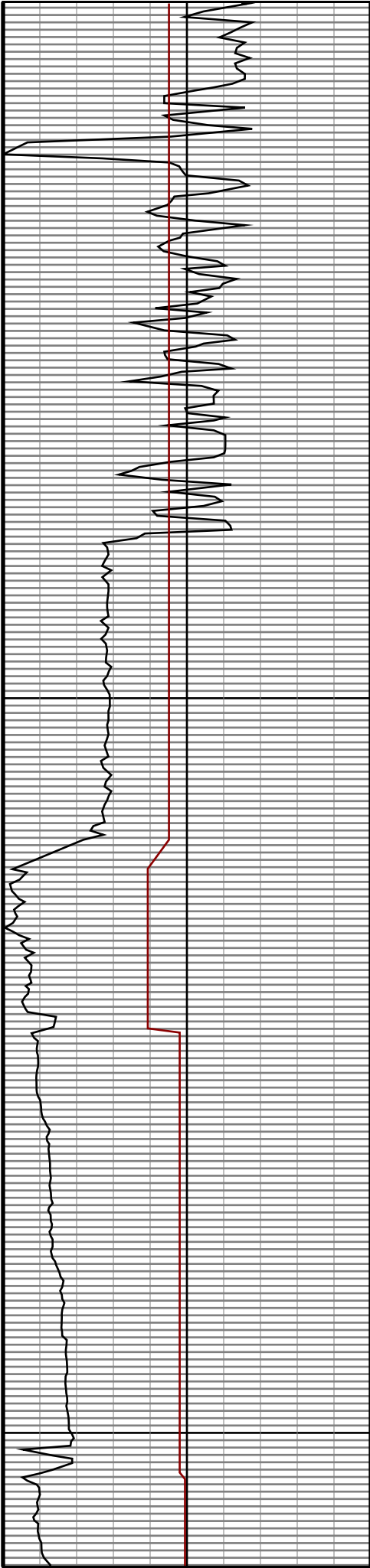
6000

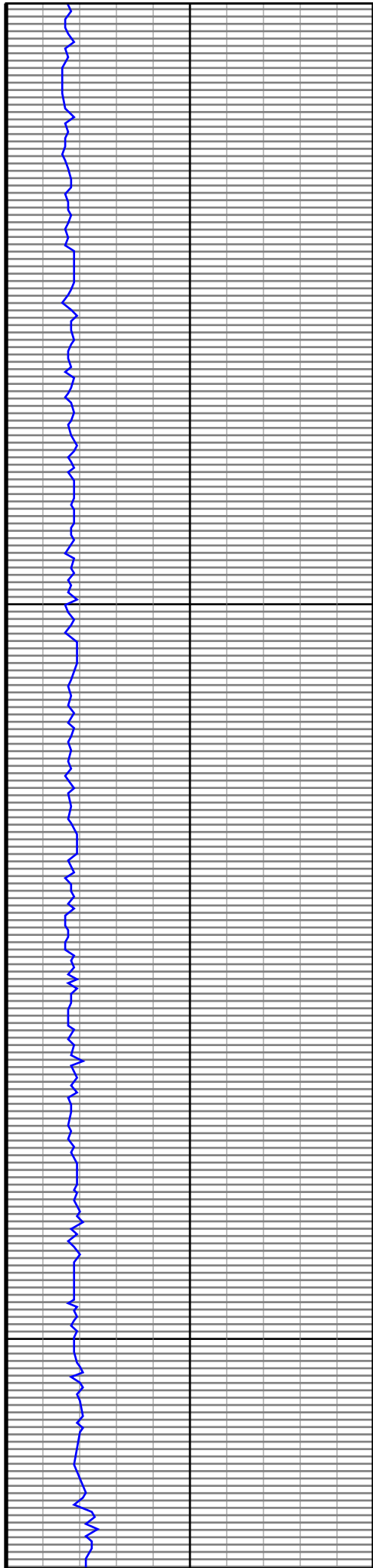




6100

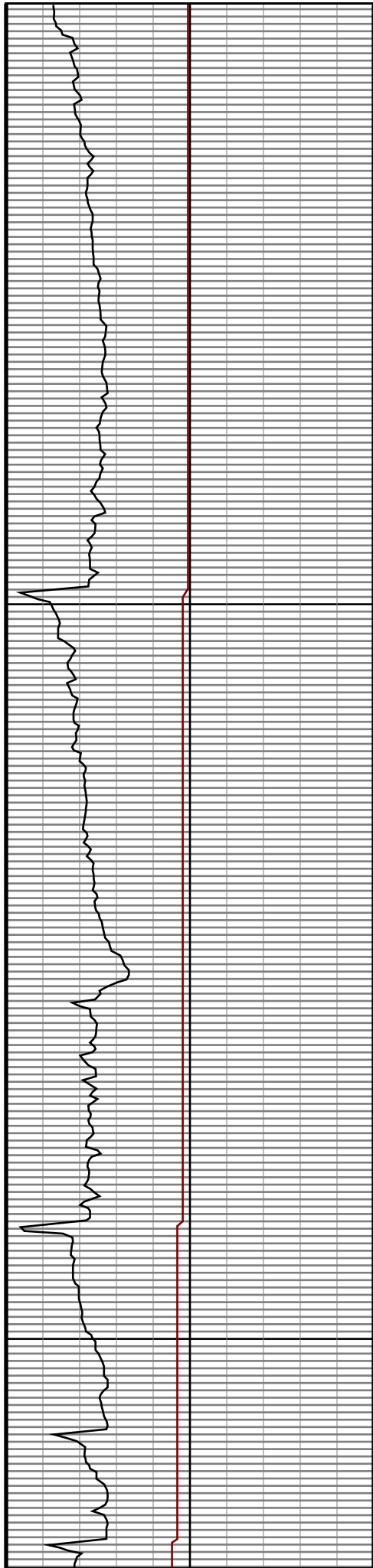
6200

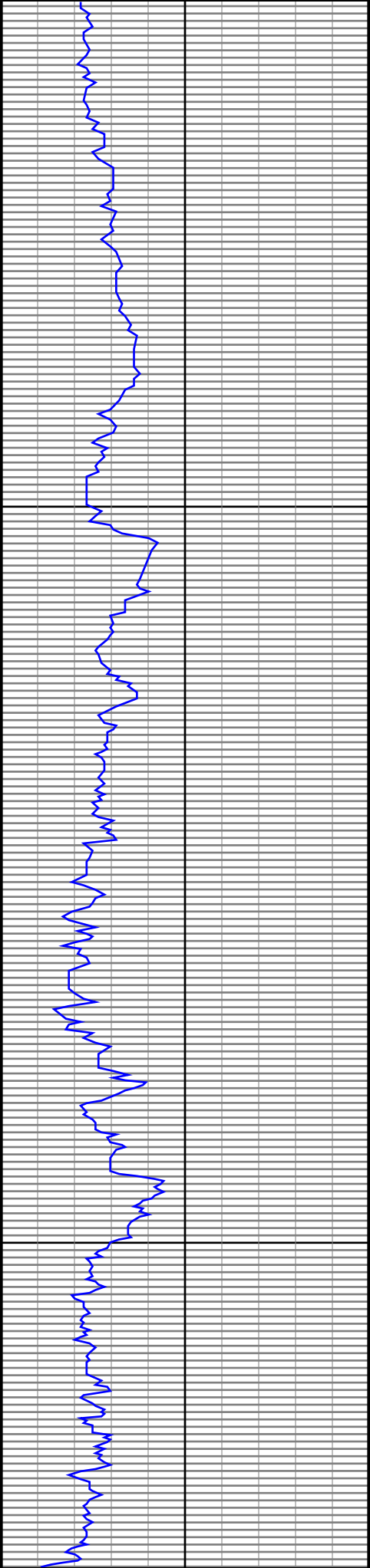




6300

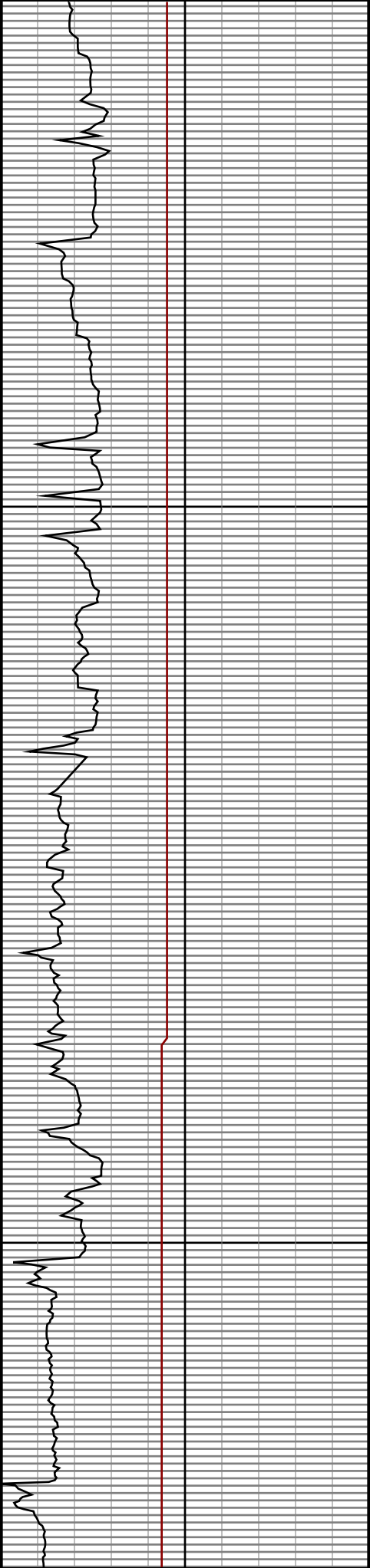
6400

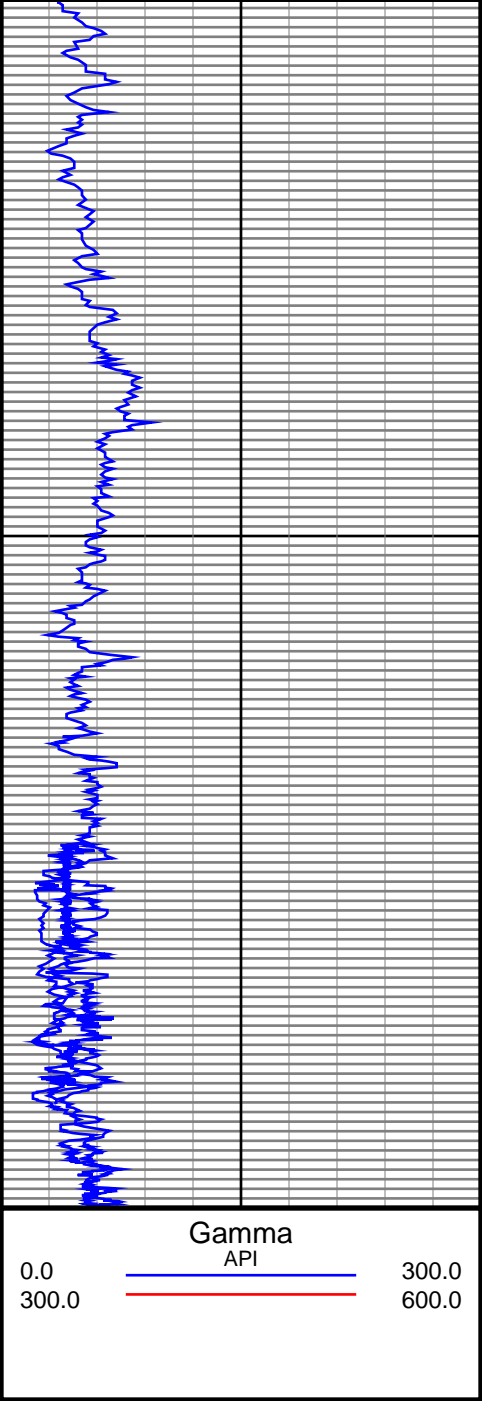




6500

6600





6700

