

MD 3371 TVD 3351.97
INC 12 AZ 266.9
VS 55.93

ROP (Ft/Hr)
Gamma (API)

1500
160

MD 3467 TVD 3446.09
INC 10.7 AZ 269
VS 59.87

MD 3662 TVD 3539.35
INC 11.3 AZ 270.1
VS 64.16

3400

3450

3500

3550

Pierre (3450' MD- 3500' MD)



3350'- 3400': SS: 60% LTGY
-MEDLTGY, FRI, FN TO MED GRN,
WSRTD, CALC CMT, SILTY, IMBD
GLAUC, INTGR POR, NO STN, NO
FLOR, NOO FLOR, NO CUT, NO
RNG

3400'- 3450': SLTST: 70% LTGY
-MEDLTGY, FRI, FN TO MED GRN,
WSRTD, CALC CMT, SANDY,
INTGRPOR, NO STN, NO FLOR, NO
OFLOR, NO CUT, NO RNG

3450'- 3500': SLTST: 70% LTGY
-MEDLTGY, FRI, FN TO MED GRN,
WSRTD, CALC CMT, SANDY,
INTGRPOR, NO STN, NO FLOR, NO
OFLOR, NO CUT, NO RNG

3500'- 3550': SLTST: 70% LTGY
-MEDLTGY, FRI, FN TO MED GRN,
WSRTD, CALC CMT, SCAT FREE
PYRC, SANDY, INTGRPOR, NO STN,
NO FLOR, NO OFLOR, NO CUT, NO
RNG

3550'- 3600': SLTST: 65% LTGY
-MEDLTGY, FRI, FN TO MED GRN,
WSRTD, CALC CMT, SCAT FREE
PYRC, SANDY, INTGRPOR, NO STN,

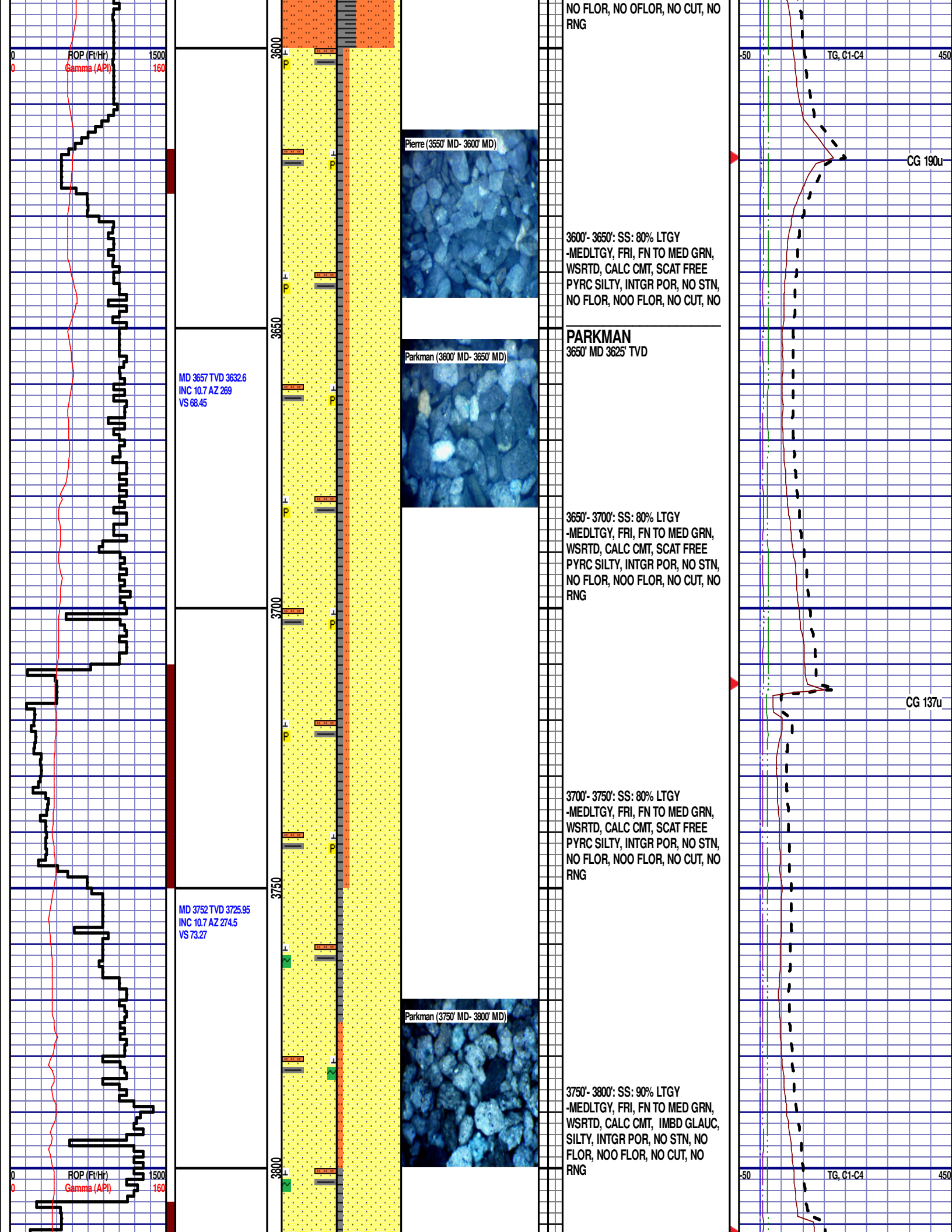
-50

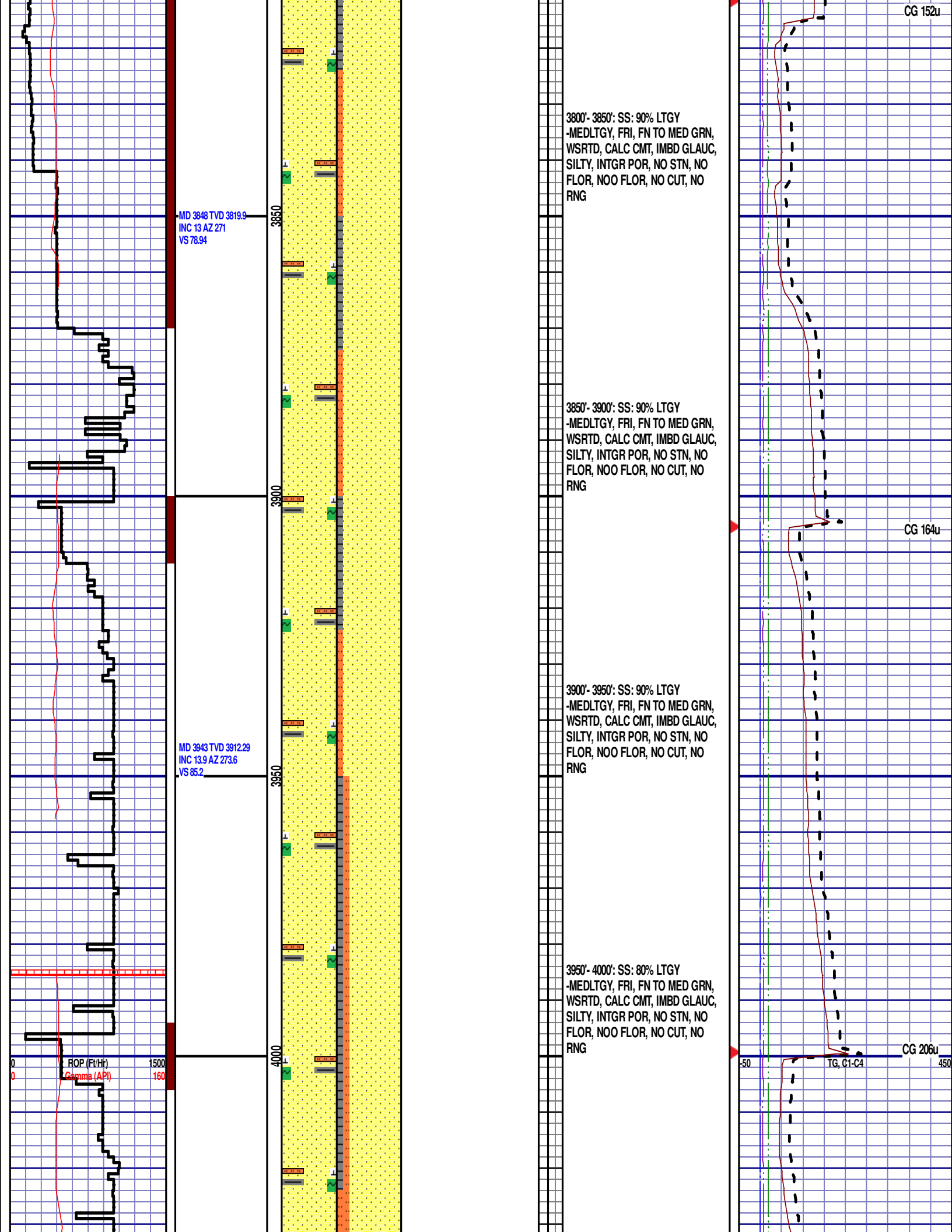
TG, C1-C4

450

CG 152u

CG 118u

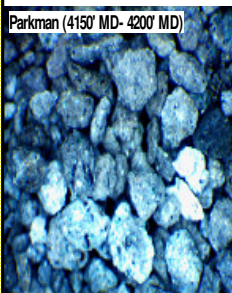
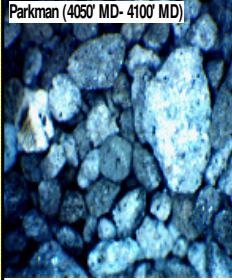




MD 4038 TVD 4004.37
INC 14.6 AZ 272.7
VS 92.14

MD 4133 TVD 4096.34
INC 14.4 AZ 271.8
VS 98.85

MD 4228 TVD 4188.42
INC 14.1 AZ 272.7
VS 105.45



4000'- 4050': SS: 80% LTGY
-MEDLTGY, FRI, FN TO MED GRN,
WSRTD, CALC CMT, IMBD GLAUC,
SILTY, INTGR POR, NO STN, NO
FLOR, NOO FLOR, NO CUT, NO
RNG

4050'- 4100': SS: 70% LTGY
-MEDLTGY, FRI, FN TO MED GRN,
WSRTD, CALC CMT, IMBD GLAUC,
SILTY, INTGR POR, NO STN, NO
FLOR, NOO FLOR, NO CUT, NO
RNG

4100'- 4150': SS: 60% LTGY
-MEDLTGY, FRI, FN TO MED GRN,
WSRTD, CALC CMT, IMBD GLAUC,
SILTY, INTGR POR, NO STN, NO
FLOR, NOO FLOR, NO CUT, NO
RNG

4150'- 4200': SS: 60% LTGY
-MEDLTGY, FRI, FN TO MED GRN,
WSRTD, CALC CMT, IMBD GLAUC,
SILTY, INTGR POR, NO STN, NO
FLOR, NOO FLOR, NO CUT, NO
RNG

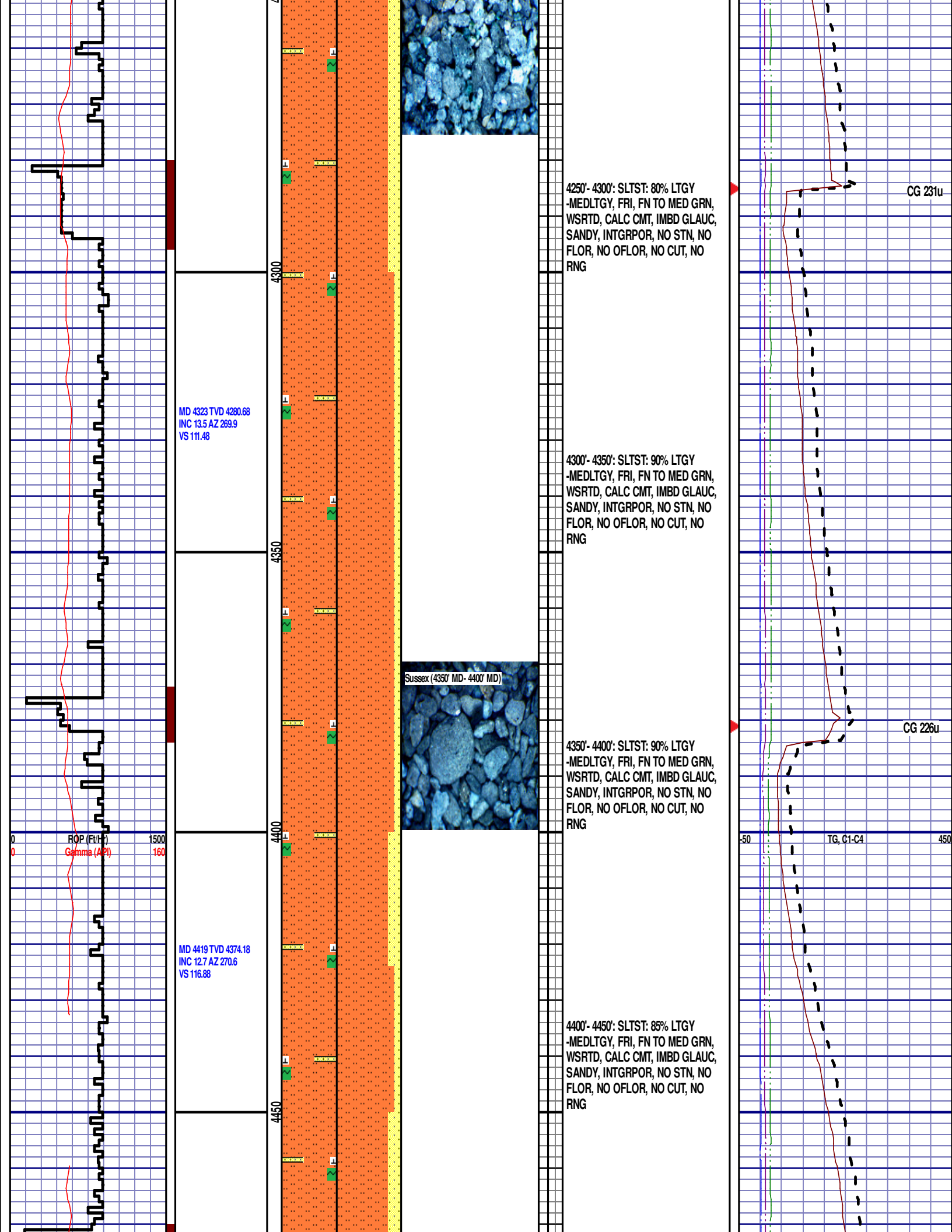
4200'- 4250': SLTST: 60% LTGY
-MEDLTGY, FRI, FN TO MED GRN,
WSRTD, CALC CMT, IMBD GLAUC,
SANDY, INTGRPOR, NO STN, NO
FLOR, NO OFLOR, NO CUT, NO
RNG

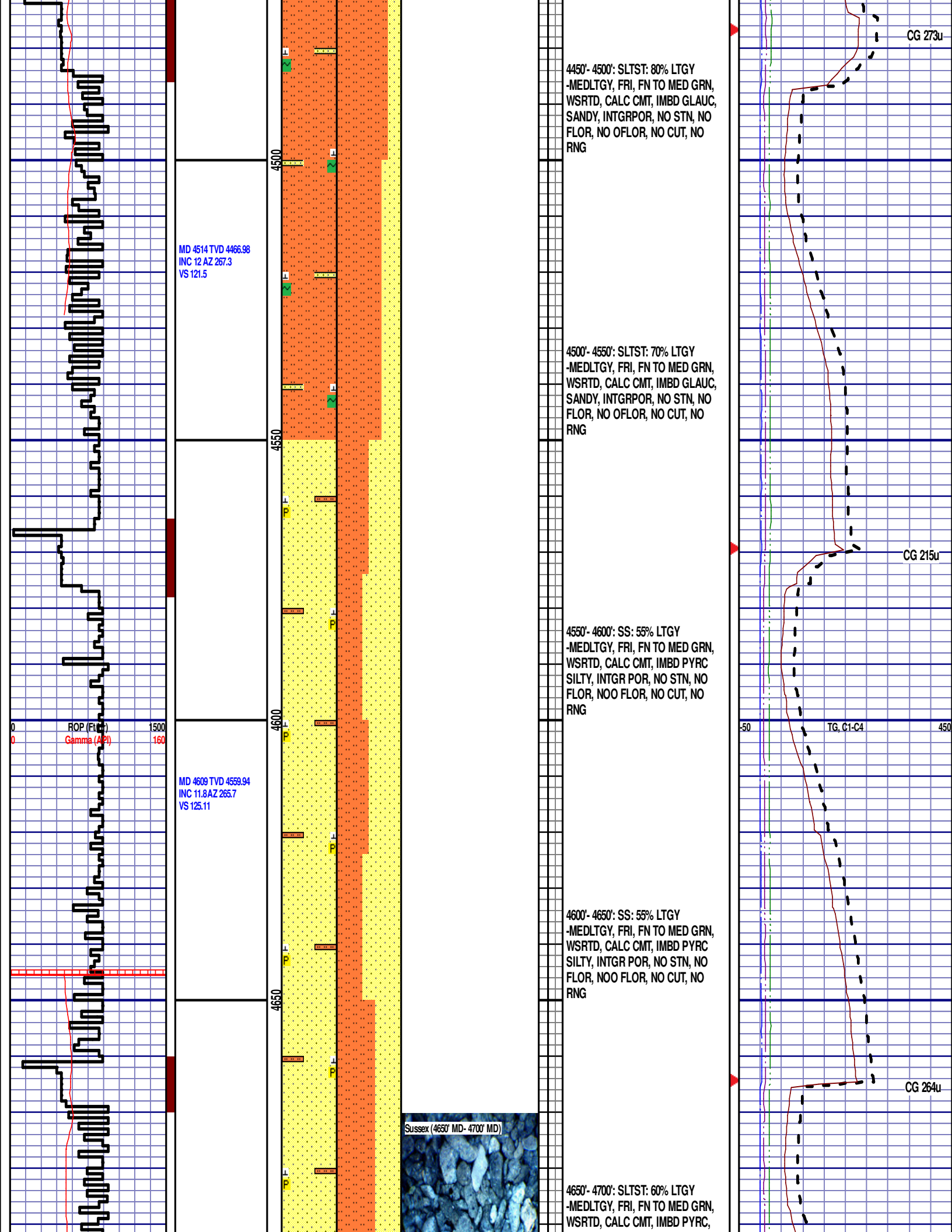
SUSSEX
4243' MD 4202' TVD

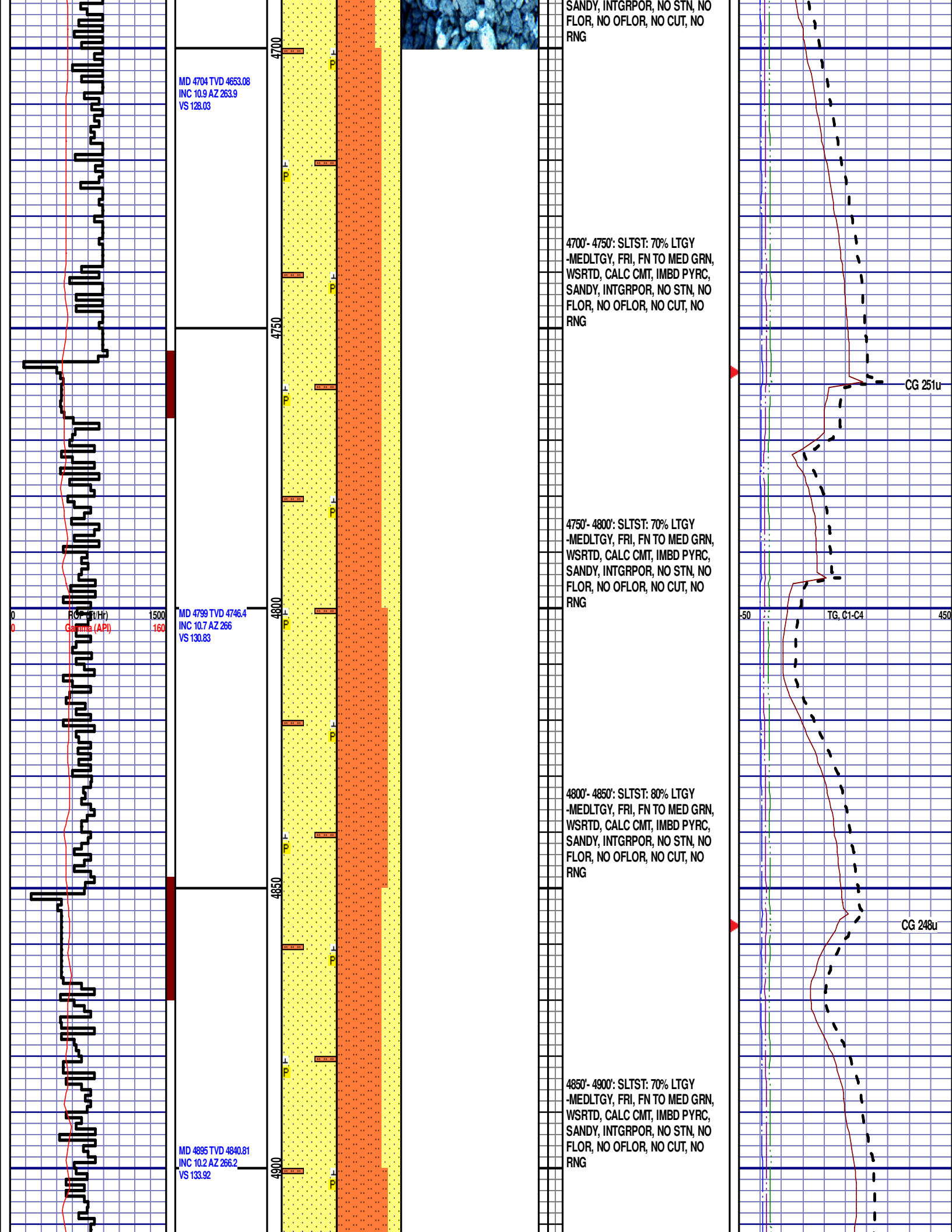
CG 289u

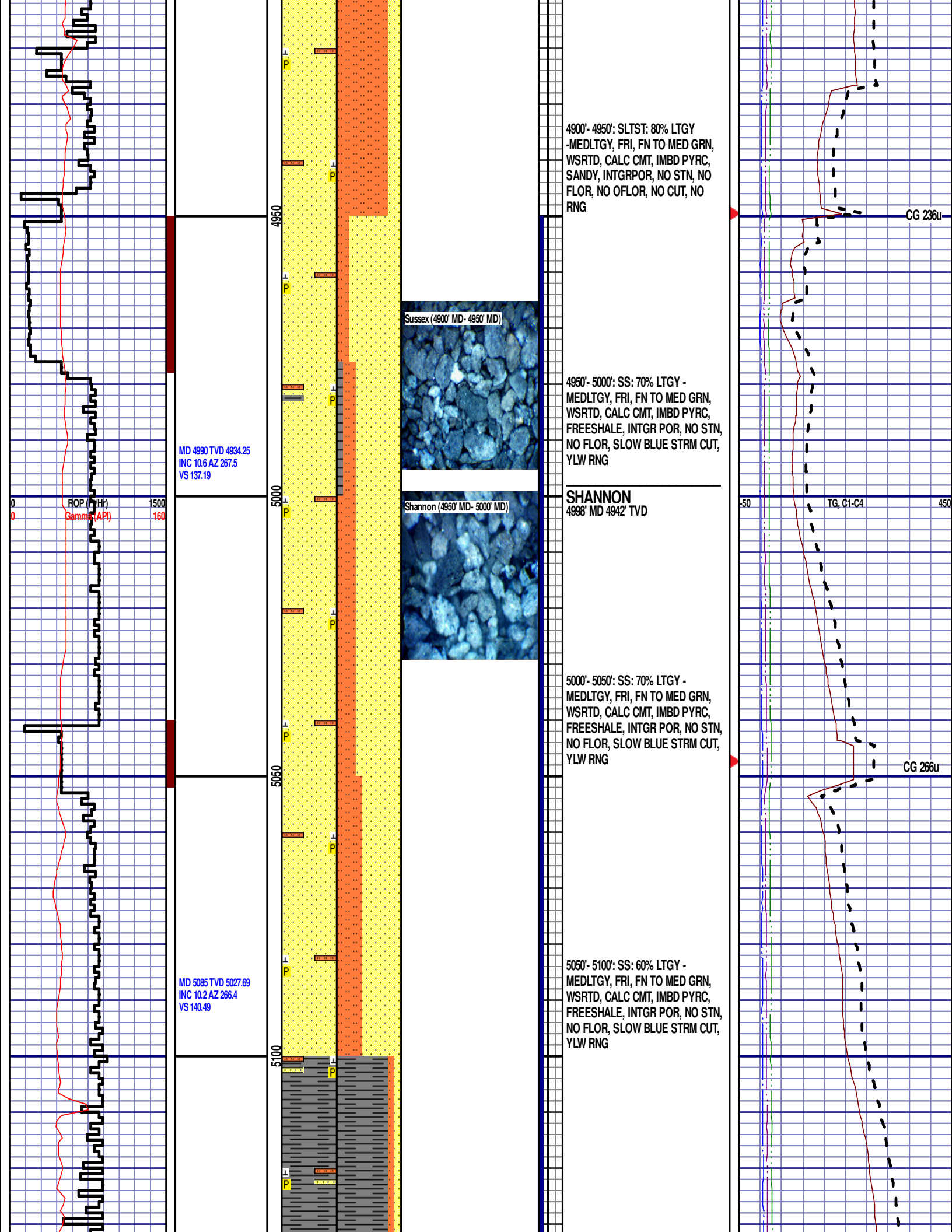
CG 272u

TG, C1-C4





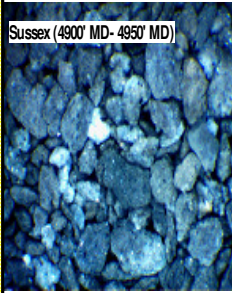




4900'- 4950': SLTST: 80% LTGY
-MEDLTGY, FRI, FN TO MED GRN,
WSRTD, CALC CMT, IMBD PYRC,
SANDY, INTGRPOR, NO STN, NO
FLOR, NO OFLOR, NO CUT, NO
RNG

CG 236u

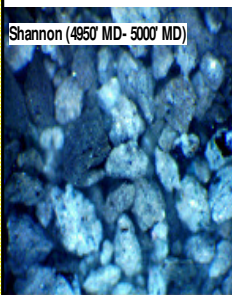
Sussex (4900' MD- 4950' MD)



4950'- 5000': SS: 70% LTGY -
MEDLTGY, FRI, FN TO MED GRN,
WSRTD, CALC CMT, IMBD PYRC,
FREESHLE, INTGR POR, NO STN,
NO FLOR, SLOW BLUE STRM CUT,
YLW RNG

SHANNON
4998' MD 4942' TVD

Shannon (4950' MD- 5000' MD)



5000'- 5050': SS: 70% LTGY -
MEDLTGY, FRI, FN TO MED GRN,
WSRTD, CALC CMT, IMBD PYRC,
FREESHLE, INTGR POR, NO STN,
NO FLOR, SLOW BLUE STRM CUT,
YLW RNG

CG 266u

5050'- 5100': SS: 60% LTGY -
MEDLTGY, FRI, FN TO MED GRN,
WSRTD, CALC CMT, IMBD PYRC,
FREESHLE, INTGR POR, NO STN,
NO FLOR, SLOW BLUE STRM CUT,
YLW RNG

MD 4990 TVD 4934.25
INC 10.6 AZ 267.5
VS 137.19

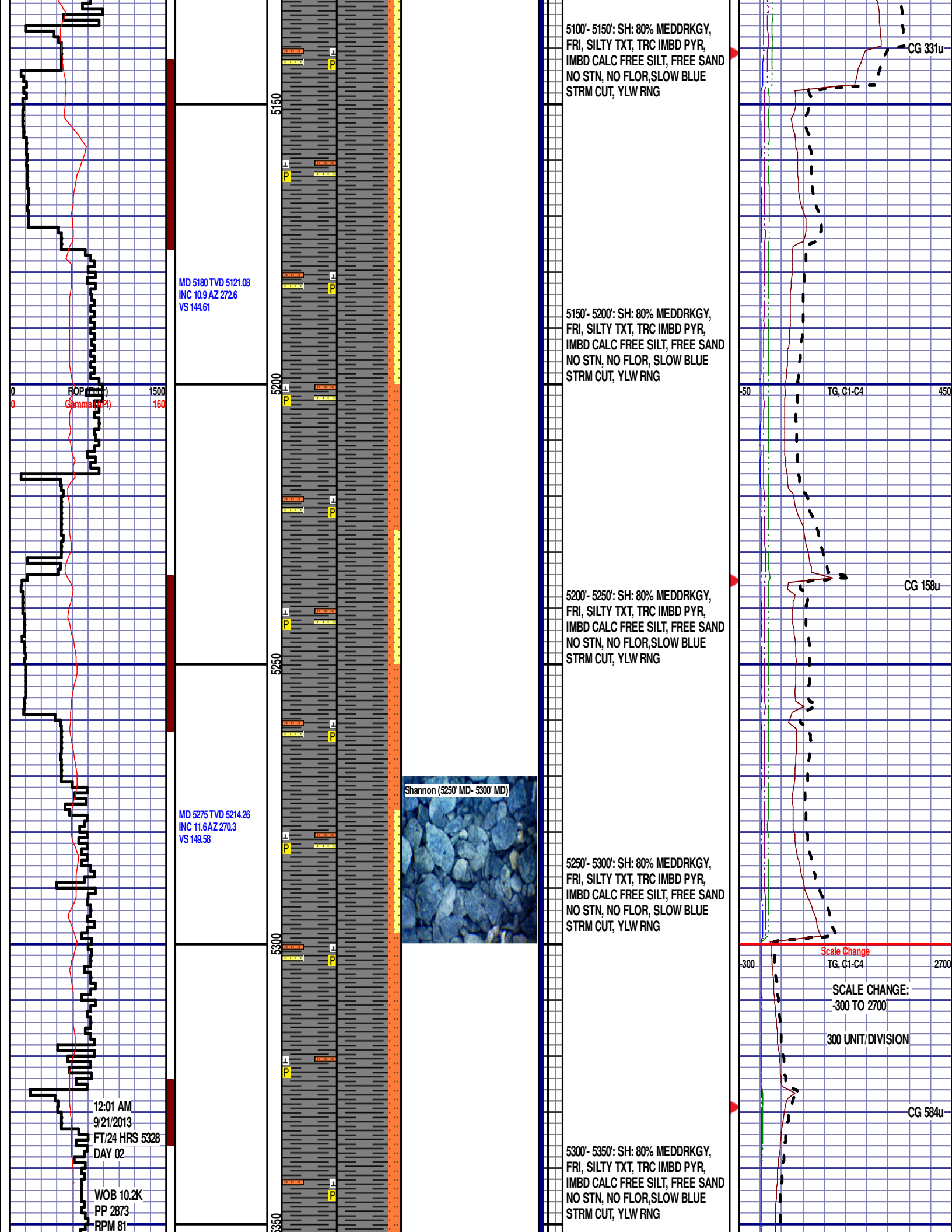
ROP (Hr)
Gamma (API)

MD 5085 TVD 5027.69
INC 10.2 AZ 266.4
VS 140.49

-50

TG, C1-C4

450



SPM 60/60

MD 5370 TVD 5307.48
INC 10.6 AZ 266.8
VS 153.62

ROP (R/Hr)
Gamma (API)

1500
160

5400

5450

5500

5550

MD 5465 TVD 5400.82
INC 10.9 AZ 273.6
VS 158.01

MD 5561 TVD 5494.91
INC 12 AZ 270.4
VS 163.28

5350'- 5400': SH: 80% MEDDRKGY,
FRI, SILTY TXT, TRC IMBD PYR,
IMBD CALC FREE SILT, FREE SAND
NO STN, NO FLOR, SLOW BLUE
STRM CUT, YLW RNG

5400'- 5450': SH: 70% MEDDRKGY,
FRI, SILTY TXT, TRC IMBD PYR,
IMBD CALC FREE SILT, FREE SAND
NO STN, NO FLOR, SLOW BLUE
STRM CUT, YLW RNG

5450'- 5500': SH: 90% MEDDRKGY,
FRI, SILTY TXT, TRC IMBD PYR,
IMBD CALC FREE SILT, FREE SAND
NO STN, NO FLOR, SLOW BLUE
STRM CUT, YLW RNG

5500'- 5550': SH: 90% MEDDRKGY,
FRI, SILTY TXT, TRC IMBD PYR,
IMBD CALC FREE SILT, SCAT FREE
PYR, FREE SAND NO STN, NO
FLOR, SLOW BLUE STRM CUT, YLW
RNG

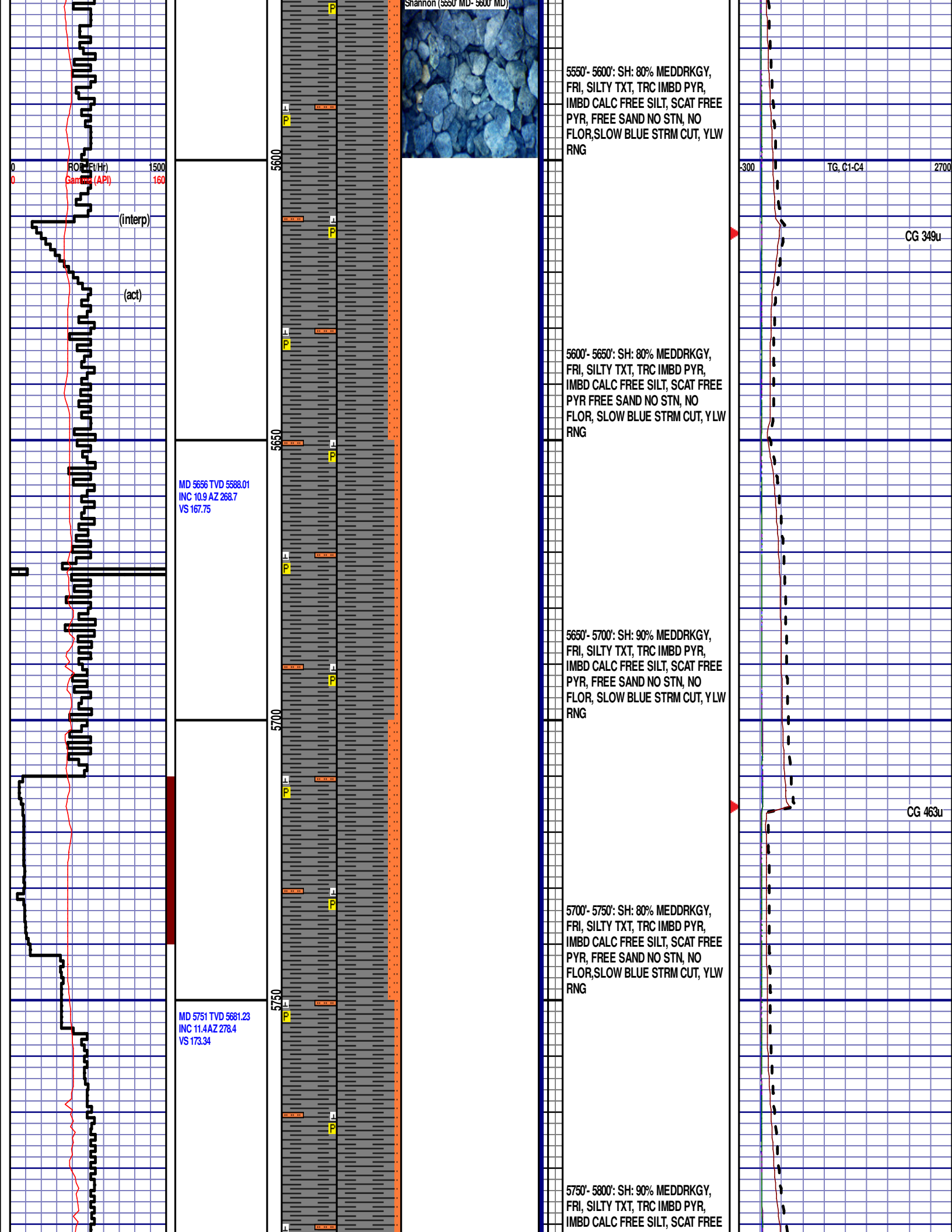
300

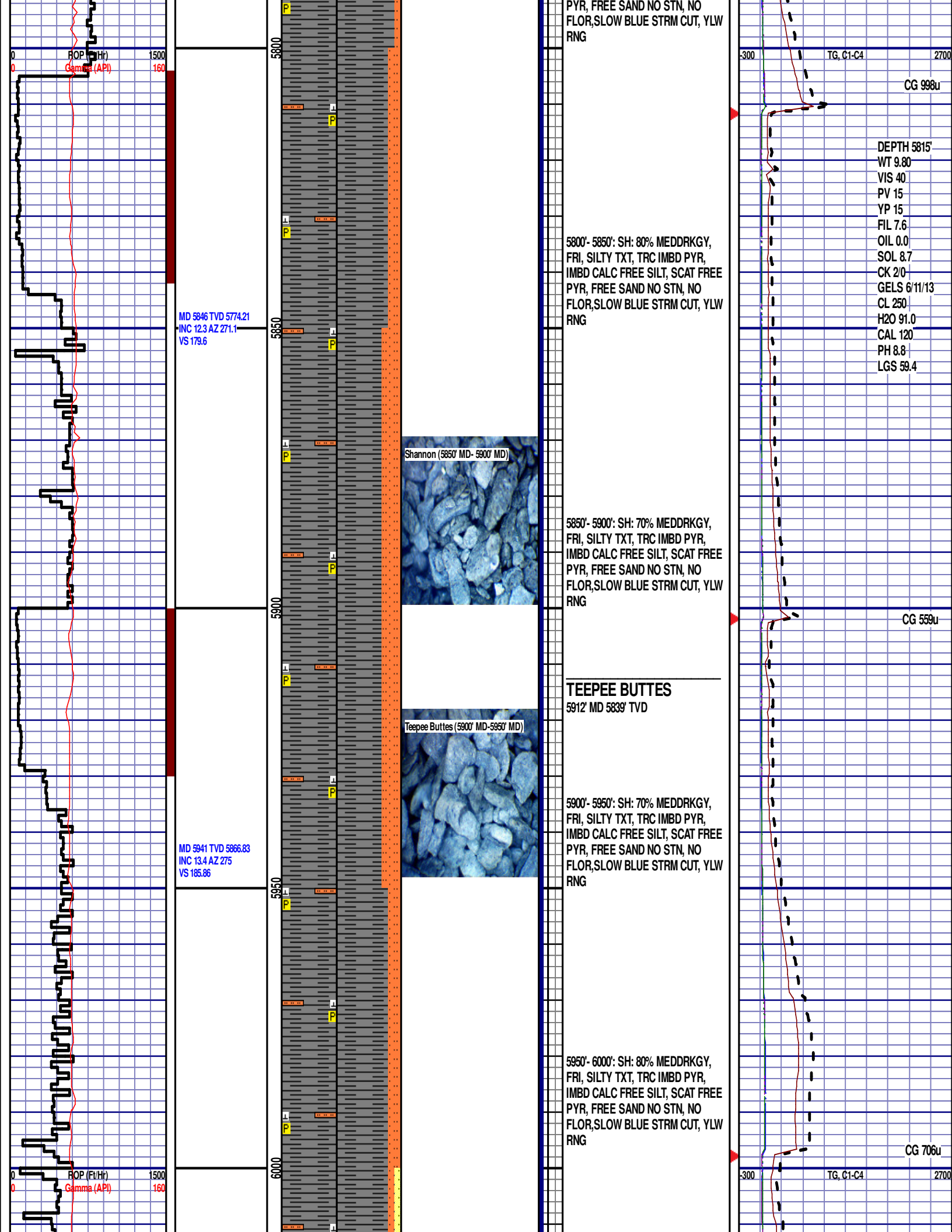
TG, C1-C4

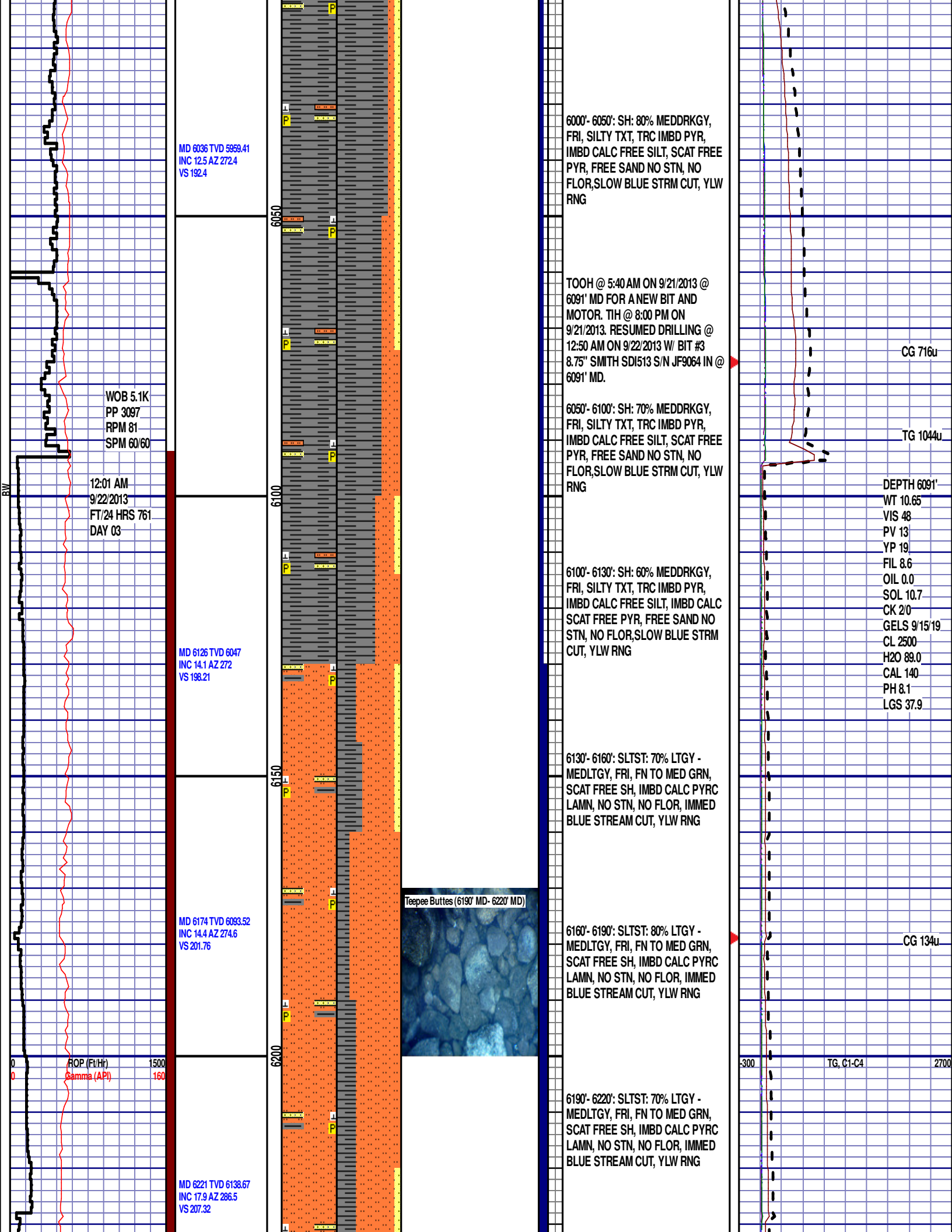
2700

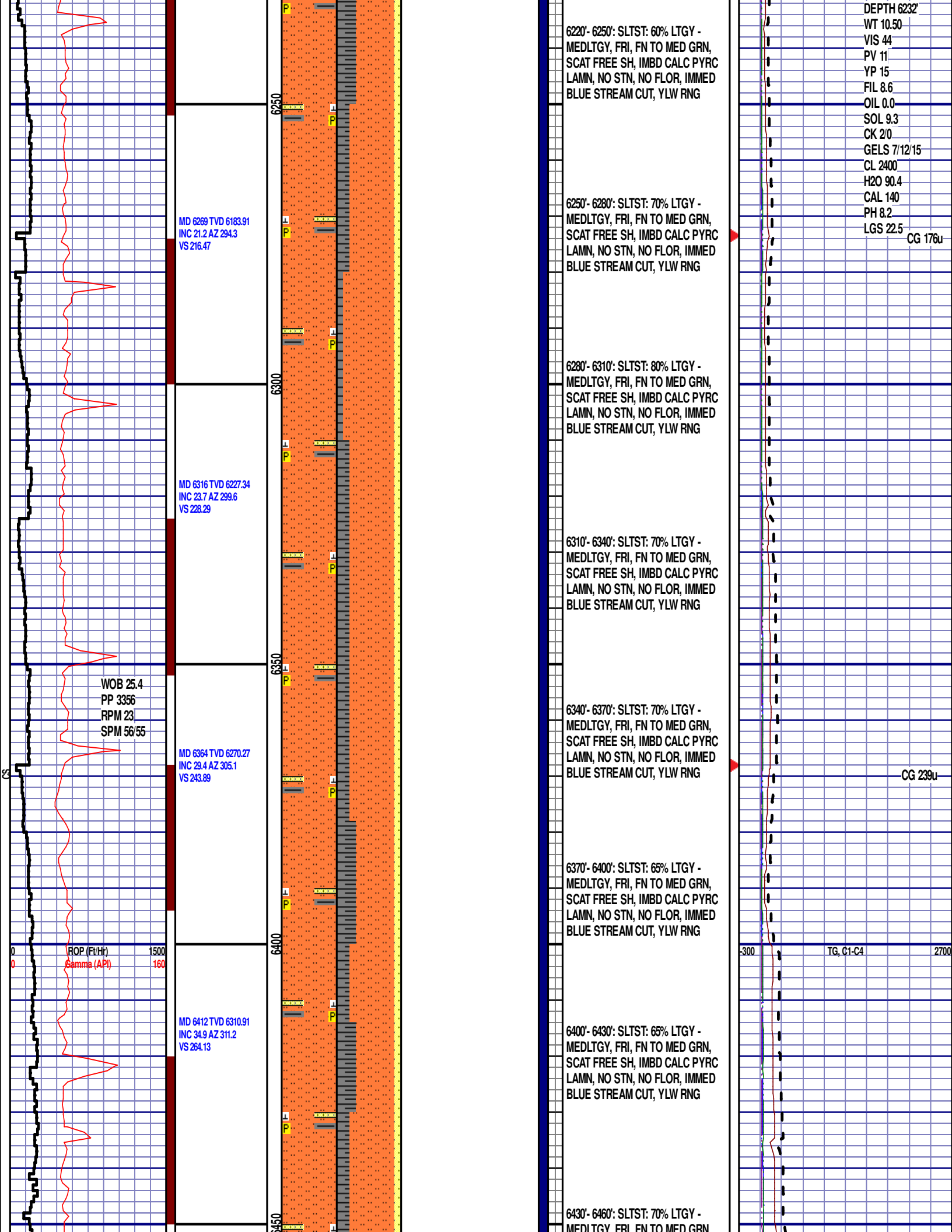
CG 495u

CG 245u









MD 6459 TVD 6348.11
INC 40.5 AZ 320
VS 288.96

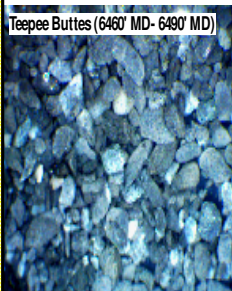
MD 6607 TVD 6384.14
INC 42.2 AZ 321.6
VS 317.68

MD 6554 TVD 6418.57
INC 43.6 AZ 322.2
VS 346.92

MD 6602 TVD 6451.72
INC 49 AZ 325.3
VS 379.06

MD 6650 TVD 6480.28
INC 57.9 AZ 327.9
VS 415.44

Teepee Buttes (6460' MD- 6490' MD)



6459'- 6460': SH: 70% MEDDRKGY,
FRI, SILTY TXT, TRC IMBD PYR,
IMBD CALC FLK, FREE SILT, NO
STN, NO FLOR, IMMED BLUE
STREAM CUT, YLW RNG

6460'- 6490': SLTST: 70% LTGY -
MEDLTGY, FRI, FN TO MED GRN,
SCAT FREE SH, IMBD CALC PYRC
LAMN, NO STN, NO FLOR, IMMED
BLUE STREAM CUT, YLW RNG

6490'- 6520': SLTST: 70% LTGY -
MEDLTGY, FRI, FN TO MED GRN,
SCAT FREE SH, IMBD CALC PYRC
LAMN, NO STN, NO FLOR, IMMED
BLUE STREAM CUT, YLW RNG

6520'- 6550': SLTST: 70% LTGY -
MEDLTGY, FRI, FN TO MED GRN,
SCAT FREE SH, IMBD CALC PYRC
LAMN, NO STN, NO FLOR, IMMED
BLUE STREAM CUT, YLW RNG

6550'- 6580': SLTST: 60% LTGY -
MEDLTGY, FRI, FN TO MED GRN,
SCAT FREE SH, IMBD CALC PYRC
LAMN, NO STN, NO FLOR, IMMED
BLUE STREAM CUT, YLW RNG

6580'- 6610': SLTST: 60% LTGY -
MEDLTGY, FRI, FN TO MED GRN,
SCAT FREE SH, IMBD CALC PYRC
LAMN, NO STN, NO FLOR, IMMED
BLUE STREAM CUT, YLW RNG

6610'- 6640': SH: 70% MEDDRKGY,
FRI, SILTY TXT, TRC IMBD PYR,
IMBD CALC FLK, FREE SILT, NO
STN, NO FLOR, IMMED BLUE
STREAM CUT, YLW RNG

6640'- 6670': SH: 75% MEDDRKGY,
FRI, SILTY TXT, TRC IMBD PYR,
IMBD CALC FLK, FREE SILT, NO
STN, NO FLOR, IMMED BLUE
STREAM CUT, YLW RNG

CG 478u

CG 594u

CG 2347u

ROP (Ft/Hr)
Gamma (API)

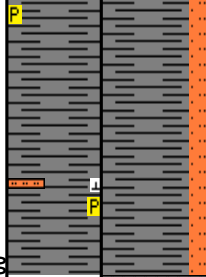
300 TG, C1-C4 2700

WOB 32.5K
PP 3672
RPM 20
SPM 55/55

MD 6697 TVD 6503.81
INC 62 AZ 329.8
VS 454.33

6700

50



STREAM CUT, YLW RNG

6670'- 6700': SH: 80% MEDDRKGY,
FRI, SILTY TXT, TRC IMBD PYR,
IMBD CALC FLK, FREE SILT, NO
STN, NO FLOR, IMMED BLUE
STREAM CUT, YLW RNG

END OF VERTICAL LOG @ 6700'
MD ON 9/22/2013, CONTINUED ON
HORIZONTAL LOG

