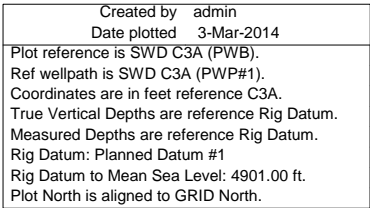


Location	Windsor	Slot	C3A
Field	Wattenberg	Well	SWD C3A
Installation	C3	Wellbore	SWD C3A (PWB)





INTEGRATED PETROLEUM TECHNOLOGIES, INC
SYSDRILL
Well Design Combined Report
Wellbore: SWD C3A (PWB)

Wellhead Details							
Name	Northing	Easting	Latitude	Longitude	North	East	Elevation Above Inst.
C3A	1343645.3062	3224902.1624	40.27390000	-104.69397000	7.59N	837.09E	-0.00

Declination			
Date	Source	Time	
9-Nov-2012	IGRF Model [1900.0-2015.0]	13:46	
26-Feb-2014	IGRF Model [1900.0-2015.0]	13:06	

Site Details				
Name	Northing	Easting	Coord System Name	North Alignment
C3	1343637.7116	3224065.1116	CO83-NF on NORTH AMERICAN DATUM 1983 datum	Grid

Summary Wellpath									
MD[ft]	Inc[deg]	Azi[deg]	TVD[ft]	North[ft]	East[ft]	Dogleg [deg/100ft]	Vertical Section[ft]	Northing	Easting
0.00	0.00	0.000	0.00	0.00N	0.00E		0.00	1343645.31	3224902.16
700.00	0.00	0.000	700.00	0.00N	0.00E	==>	0.00	1343645.31	3224902.16
1617.94	18.36	353.260	1602.31	144.80N	17.11W	2.00	145.81	1343790.10	3224885.06
8627.06	18.36	353.260	8254.69	2337.19N	276.11W	==>	2353.44	1345982.39	3224626.07
9545.00	0.00	0.000	9157.00	2481.99N	293.22W	2.00	2499.25	1346127.19	3224608.96
10888.00	0.00	0.000	10500.00	2481.99N	293.22W	==>	2499.25	1346127.19	3224608.96

Interpolated Wellpath									
MD[ft]	Inc[deg]	Azi[deg]	TVD[ft]	North[ft]	East[ft]	Dogleg [deg/100ft]	Vertical Section[ft]	Northing	Easting
0.00	0.00	0.000	0.00	0.00N	0.00E		0.00	1343645.31	3224902.16
100.00	0.00	0.000	100.00	0.00N	0.00E	==>	0.00	1343645.31	3224902.16
200.00	0.00	0.000	200.00	0.00N	0.00E	==>	0.00	1343645.31	3224902.16
300.00	0.00	0.000	300.00	0.00N	0.00E	==>	0.00	1343645.31	3224902.16
400.00	0.00	0.000	400.00	0.00N	0.00E	==>	0.00	1343645.31	3224902.16
500.00	0.00	0.000	500.00	0.00N	0.00E	==>	0.00	1343645.31	3224902.16
600.00	0.00	0.000	600.00	0.00N	0.00E	==>	0.00	1343645.31	3224902.16
700.00	0.00	0.000	700.00	0.00N	0.00E	==>	0.00	1343645.31	3224902.16
800.00	2.00	353.260	799.98	1.73N	0.20W	2.00	1.75	1343647.04	3224901.96
900.00	4.00	353.260	899.84	6.93N	0.82W	2.00	6.98	1343652.24	3224901.34
1000.00	6.00	353.260	999.45	15.59N	1.84W	2.00	15.69	1343660.89	3224900.32
1100.00	8.00	353.260	1098.70	27.69N	3.27W	2.00	27.88	1343672.99	3224898.89
1200.00	10.00	353.260	1197.47	43.22N	5.11W	2.00	43.52	1343688.53	3224897.06
1300.00	12.00	353.260	1295.62	62.17N	7.34W	2.00	62.60	1343707.47	3224894.82
1400.00	14.00	353.260	1393.06	84.51N	9.98W	2.00	85.10	1343729.81	3224892.18
1500.00	16.00	353.260	1489.64	110.21N	13.02W	2.00	110.98	1343755.51	3224889.14
1600.00	18.00	353.260	1585.27	139.24N	16.45W	2.00	140.21	1343784.54	3224885.71
1617.94	18.36	353.260	1602.31	144.80N	17.11W	2.00	145.81	1343790.10	3224885.06
1700.00	18.36	353.260	1680.20	170.47N	20.14W	==>	171.66	1343815.77	3224882.02
1800.00	18.36	353.260	1775.11	201.75N	23.83W	==>	203.15	1343847.05	3224878.33
1900.00	18.36	353.260	1870.02	233.03N	27.53W	==>	234.65	1343878.32	3224874.63
2000.00	18.36	353.260	1964.93	264.31N	31.22W	==>	266.15	1343909.60	3224870.94
2100.00	18.36	353.260	2059.84	295.59N	34.92W	==>	297.64	1343940.88	3224867.24
2200.00	18.36	353.260	2154.75	326.87N	38.61W	==>	329.14	1343972.16	3224863.55
2300.00	18.36	353.260	2249.66	358.15N	42.31W	==>	360.64	1344003.44	3224859.85
2400.00	18.36	353.260	2344.57	389.42N	46.01W	==>	392.13	1344034.71	3224856.16
2500.00	18.36	353.260	2439.48	420.70N	49.70W	==>	423.63	1344065.99	3224852.46
2600.00	18.36	353.260	2534.39	451.98N	53.40W	==>	455.13	1344097.27	3224848.77
2700.00	18.36	353.260	2629.30	483.26N	57.09W	==>	486.62	1344128.55	3224845.07
2800.00	18.36	353.260	2724.21	514.54N	60.79W	==>	518.12	1344159.82	3224841.38
2900.00	18.36	353.260	2819.12	545.82N	64.48W	==>	549.62	1344191.10	3224837.68
3000.00	18.36	353.260	2914.03	577.10N	68.18W	==>	581.11	1344222.38	3224833.99
3100.00	18.36	353.260	3008.94	608.38N	71.87W	==>	612.61	1344253.66	3224830.29
3200.00	18.36	353.260	3103.85	639.66N	75.57W	==>	644.11	1344284.93	3224826.60
3300.00	18.36	353.260	3198.76	670.94N	79.26W	==>	675.60	1344316.21	3224822.90
3400.00	18.36	353.260	3293.67	702.22N	82.96W	==>	707.10	1344347.49	3224819.21
3500.00	18.36	353.260	3388.58	733.49N	86.65W	==>	738.60	1344378.77	3224815.51

All data is in Feet unless otherwise stated
Coordinates are from Slot MD's are from Rig and TVD's are from Rig (Planned Datum #1 4901.0ft above Mean Sea Level)
Vertical Section is from 0.00N 0.00E on azimuth 353.260 degrees
Bottom hole distance is 2499.25 Feet on azimuth 353.26 degrees from Wellhead
Calculation method uses Minimum Curvature method
Prepared by Integrated Petroleum Technologies, Inc.
Date Printed: 4-Mar-2014



INTEGRATED PETROLEUM TECHNOLOGIES, INC
SYSDRILL

Well Design Combined Report
Wellbore: SWD C3A (PWB)

Interpolated Wellpath									
MD[ft]	Inc[deg]	Azi[deg]	TVD[ft]	North[ft]	East[ft]	Dogleg [deg/100ft]	Vertical Section[ft]	Northing	Easting
3600.00	18.36	353.260	3483.49	764.77N	90.35W	==>	770.09	1344410.05	3224811.82
3700.00	18.36	353.260	3578.40	796.05N	94.04W	==>	801.59	1344441.32	3224808.12
3800.00	18.36	353.260	3673.31	827.33N	97.74W	==>	833.08	1344472.60	3224804.43
3900.00	18.36	353.260	3768.22	858.61N	101.43W	==>	864.58	1344503.88	3224800.73
4000.00	18.36	353.260	3863.13	889.89N	105.13W	==>	896.08	1344535.16	3224797.04
4100.00	18.36	353.260	3958.04	921.17N	108.82W	==>	927.57	1344566.43	3224793.34
4200.00	18.36	353.260	4052.95	952.45N	112.52W	==>	959.07	1344597.71	3224789.65
4300.00	18.36	353.260	4147.86	983.73N	116.21W	==>	990.57	1344628.99	3224785.95
4400.00	18.36	353.260	4242.77	1015.01N	119.91W	==>	1022.06	1344660.27	3224782.26
4500.00	18.36	353.260	4337.68	1046.29N	123.60W	==>	1053.56	1344691.54	3224778.56
4600.00	18.36	353.260	4432.59	1077.56N	127.30W	==>	1085.06	1344722.82	3224774.87
4700.00	18.36	353.260	4527.51	1108.84N	131.00W	==>	1116.55	1344754.10	3224771.17
4800.00	18.36	353.260	4622.42	1140.12N	134.69W	==>	1148.05	1344785.38	3224767.48
4900.00	18.36	353.260	4717.33	1171.40N	138.39W	==>	1179.55	1344816.66	3224763.78
5000.00	18.36	353.260	4812.24	1202.68N	142.08W	==>	1211.04	1344847.93	3224760.09
5100.00	18.36	353.260	4907.15	1233.96N	145.78W	==>	1242.54	1344879.21	3224756.39
5200.00	18.36	353.260	5002.06	1265.24N	149.47W	==>	1274.04	1344910.49	3224752.70
5300.00	18.36	353.260	5096.97	1296.52N	153.17W	==>	1305.53	1344941.77	3224749.00
5400.00	18.36	353.260	5191.88	1327.80N	156.86W	==>	1337.03	1344973.04	3224745.31
5500.00	18.36	353.260	5286.79	1359.08N	160.56W	==>	1368.53	1345004.32	3224741.61
5600.00	18.36	353.260	5381.70	1390.36N	164.25W	==>	1400.02	1345035.60	3224737.92
5700.00	18.36	353.260	5476.61	1421.63N	167.95W	==>	1431.52	1345066.88	3224734.22
5800.00	18.36	353.260	5571.52	1452.91N	171.64W	==>	1463.02	1345098.15	3224730.53
5900.00	18.36	353.260	5666.43	1484.19N	175.34W	==>	1494.51	1345129.43	3224726.83
6000.00	18.36	353.260	5761.34	1515.47N	179.03W	==>	1526.01	1345160.71	3224723.14
6100.00	18.36	353.260	5856.25	1546.75N	182.73W	==>	1557.51	1345191.99	3224719.44
6200.00	18.36	353.260	5951.16	1578.03N	186.42W	==>	1589.00	1345223.26	3224715.75
6300.00	18.36	353.260	6046.07	1609.31N	190.12W	==>	1620.50	1345254.54	3224712.05
6400.00	18.36	353.260	6140.98	1640.59N	193.81W	==>	1652.00	1345285.82	3224708.36
6500.00	18.36	353.260	6235.89	1671.87N	197.51W	==>	1683.49	1345317.10	3224704.66
6600.00	18.36	353.260	6330.80	1703.15N	201.20W	==>	1714.99	1345348.38	3224700.97
6700.00	18.36	353.260	6425.71	1734.43N	204.90W	==>	1746.49	1345379.65	3224697.27
6800.00	18.36	353.260	6520.62	1765.70N	208.59W	==>	1777.98	1345410.93	3224693.58
6900.00	18.36	353.260	6615.53	1796.98N	212.29W	==>	1809.48	1345442.21	3224689.88
7000.00	18.36	353.260	6710.44	1828.26N	215.99W	==>	1840.98	1345473.49	3224686.19
7100.00	18.36	353.260	6805.35	1859.54N	219.68W	==>	1872.47	1345504.76	3224682.49
7200.00	18.36	353.260	6900.26	1890.82N	223.38W	==>	1903.97	1345536.04	3224678.80
7300.00	18.36	353.260	6995.17	1922.10N	227.07W	==>	1935.47	1345567.32	3224675.10
7400.00	18.36	353.260	7090.08	1953.38N	230.77W	==>	1966.96	1345598.60	3224671.41
7500.00	18.36	353.260	7184.99	1984.66N	234.46W	==>	1998.46	1345629.87	3224667.71
7600.00	18.36	353.260	7279.90	2015.94N	238.16W	==>	2029.96	1345661.15	3224664.02
7700.00	18.36	353.260	7374.81	2047.22N	241.85W	==>	2061.45	1345692.43	3224660.32
7800.00	18.36	353.260	7469.72	2078.50N	245.55W	==>	2092.95	1345723.71	3224656.63
7900.00	18.36	353.260	7564.63	2109.77N	249.24W	==>	2124.45	1345754.99	3224652.93
8000.00	18.36	353.260	7659.54	2141.05N	252.94W	==>	2155.94	1345786.26	3224649.24
8100.00	18.36	353.260	7754.46	2172.33N	256.63W	==>	2187.44	1345817.54	3224645.54
8200.00	18.36	353.260	7849.37	2203.61N	260.33W	==>	2218.94	1345848.82	3224641.85
8300.00	18.36	353.260	7944.28	2234.89N	264.02W	==>	2250.43	1345880.10	3224638.15
8400.00	18.36	353.260	8039.19	2266.17N	267.72W	==>	2281.93	1345911.37	3224634.46
8500.00	18.36	353.260	8134.10	2297.45N	271.41W	==>	2313.43	1345942.65	3224630.76
8600.00	18.36	353.260	8229.01	2328.73N	275.11W	==>	2344.92	1345973.93	3224627.07
8627.06	18.36	353.260	8254.69	2337.19N	276.11W	==>	2353.44	1345982.39	3224626.07
8727.06	16.36	353.260	8350.13	2366.82N	279.61W	2.00	2383.28	1346012.02	3224622.57
8827.06	14.36	353.260	8446.55	2393.12N	282.72W	2.00	2409.76	1346038.32	3224619.46
8927.06	12.36	353.260	8543.84	2416.07N	285.43W	2.00	2432.87	1346061.26	3224616.75
9027.06	10.36	353.260	8641.88	2435.62N	287.74W	2.00	2452.56	1346080.82	3224614.44
9127.06	8.36	353.260	8740.54	2451.77N	289.64W	2.00	2468.82	1346096.97	3224612.53
9227.06	6.36	353.260	8839.71	2464.49N	291.15W	2.00	2481.63	1346109.69	3224611.03
9327.06	4.36	353.260	8939.27	2473.77N	292.24W	2.00	2490.97	1346118.96	3224609.93
9427.06	2.36	353.260	9039.10	2479.58N	292.93W	2.00	2496.83	1346124.78	3224609.25
9527.06	0.36	353.260	9139.06	2481.94N	293.21W	2.00	2499.20	1346127.13	3224608.97
9545.00	0.00	0.000	9157.00	2481.99N	293.22W	2.00	2499.25	1346127.19	3224608.96

All data is in Feet unless otherwise stated
Coordinates are from Slot MD's are from Rig and TVD's are from Rig (Planned Datum #1 4901.0ft above Mean Sea Level)
Vertical Section is from 0.00N 0.00E on azimuth 353.260 degrees
Bottom hole distance is 2499.25 Feet on azimuth 353.26 degrees from Wellhead
Calculation method uses Minimum Curvature method
Prepared by Integrated Petroleum Technologies, Inc.
Date Printed: 4-Mar-2014



INTEGRATED PETROLEUM TECHNOLOGIES, INC
SYSDRILL
Well Design Combined Report
Wellbore: SWD C3A (PWB)

Interpolated Wellpath									
MD[ft]	Inc[deg]	Azi[deg]	TVD[ft]	North[ft]	East[ft]	Dogleg [deg/100ft]	Vertical Section[ft]	Northing	Easting
9600.00	0.00	0.000	9212.00	2481.99N	293.22W	==>	2499.25	1346127.19	3224608.96
9700.00	0.00	0.000	9312.00	2481.99N	293.22W	==>	2499.25	1346127.19	3224608.96
9800.00	0.00	0.000	9412.00	2481.99N	293.22W	==>	2499.25	1346127.19	3224608.96
9900.00	0.00	0.000	9512.00	2481.99N	293.22W	==>	2499.25	1346127.19	3224608.96
10000.00	0.00	0.000	9612.00	2481.99N	293.22W	==>	2499.25	1346127.19	3224608.96
10100.00	0.00	0.000	9712.00	2481.99N	293.22W	==>	2499.25	1346127.19	3224608.96
10200.00	0.00	0.000	9812.00	2481.99N	293.22W	==>	2499.25	1346127.19	3224608.96
10300.00	0.00	0.000	9912.00	2481.99N	293.22W	==>	2499.25	1346127.19	3224608.96
10400.00	0.00	0.000	10012.00	2481.99N	293.22W	==>	2499.25	1346127.19	3224608.96
10500.00	0.00	0.000	10112.00	2481.99N	293.22W	==>	2499.25	1346127.19	3224608.96
10600.00	0.00	0.000	10212.00	2481.99N	293.22W	==>	2499.25	1346127.19	3224608.96
10700.00	0.00	0.000	10312.00	2481.99N	293.22W	==>	2499.25	1346127.19	3224608.96
10800.00	0.00	0.000	10412.00	2481.99N	293.22W	==>	2499.25	1346127.19	3224608.96
10888.00	0.00	0.000	10500.00	2481.99N	293.22W	==>	2499.25	1346127.19	3224608.96

All data is in Feet unless otherwise stated
Coordinates are from Slot MD's are from Rig and TVD's are from Rig (Planned Datum #1 4901.0ft above Mean Sea Level)
Vertical Section is from 0.00N 0.00E on azimuth 353.260 degrees
Bottom hole distance is 2499.25 Feet on azimuth 353.26 degrees from Wellhead
Calculation method uses Minimum Curvature method
Prepared by Integrated Petroleum Technologies, Inc.
Date Printed: 4-Mar-2014



INTEGRATED PETROLEUM TECHNOLOGIES, INC
SYSDRILL
Well Design Combined Report
Wellbore: SWD C3A (PWB)

Hole Sections								
Diameter [in]	Start MD[ft]	Start TVD[ft]	Start North[ft]	Start East[ft]	End MD[ft]	End TVD[ft]	End North[ft]	End East[ft]
12 1/4	0.00	0.00	0.00N	0.00E	650.00	650.00	0.00N	0.00E
8 3/4	650.00	650.00	0.00N	0.00E	9444.98	9057.00	2480.26N	293.01W
6 1/8	9444.98	9057.00	2480.26N	293.01W	10888.00	10500.00	2481.99N	293.22W

Casings								
Name	Top MD[ft]	Top TVD[ft]	Top North[ft]	Top East[ft]	Shoe MD[ft]	Shoe TVD[ft]	Shoe North[ft]	Shoe East[ft]
9 5/8in Surface Casing	0.00	0.00	0.00N	0.00E	650.00	650.00	0.00N	0.00E
7.0in Intermediate Casing	0.00	0.00	0.00N	0.00E	9444.98	9057.00	2480.26N	293.01W
4 1/2in Production Liner	9374.90	8987.00	2476.98N	292.62W	10888.00	10500.00	2481.99N	293.22W

Targets								
Name	North[ft]	East[ft]	TVD[ft]	Latitude	Longitude	Northing	Easting	Last Revised
SWD C3A - T1	2481.99N	293.22W	9157.00	40.28072000	-104.69494000	1346127.19	3224608.96	25-Oct-2013
SWD C3A - T2	2481.99N	293.22W	10500.00	40.28072000	-104.69494000	1346127.19	3224608.96	25-Oct-2013

Survey Tool Program						
Reference	Survey Name	MD[ft]	TVD[ft]	Survey Tool	Error Model	
8726	Planned	10888.00	10500.00	ISCWSA MWD	Rev 2 + Fixed Rig	

Notes

All data is in Feet unless otherwise stated
Coordinates are from Slot MD's are from Rig and TVD's are from Rig (Planned Datum #1 4901.0ft above Mean Sea Level)
Vertical Section is from 0.00N 0.00E on azimuth 353.260 degrees
Bottom hole distance is 2499.25 Feet on azimuth 353.26 degrees from Wellhead
Calculation method uses Minimum Curvature method
Prepared by Integrated Petroleum Technologies, Inc.
Date Printed: 4-Mar-2014



SYSDRILL
Closest Approach + Clearance Factor Summary Report
Wellbore: SWD C3A (PWB)

Ellipse separations are reported ONLY if BOTH wells have uncertainty data
Only Depth and Magnetic Reference Field error terms are correlated across tie points
Scan limit is calculated on CENTRE to CENTRE distance

Summary data uses Closest Approach clearance calculation for all minima
Hole size/Casings ARE included
Hole size/Casings are NOT subtracted from Centre-Centre distance
Confidence limit of 95.00% / 2.80 SD.

Wellbore		
Name	Created	Last Revised
SWD C3A (PWB)	25-Feb-2014	3-Mar-2014

Well		
Name	Government ID	Last Revised
SWD C3A		26-Feb-2014

Slot						
Name	Grid Northing	Grid Easting	Latitude	Longitude	North	East
C3A	1343645.3062	3224902.1624	40.27390000	-104.69397000	7.59N	837.09E

Installation					
Name	Easting	Northing	Coord System Name	North Alignment	
C3	3224065.1116	1343637.7116	CO83-NF on NORTH AMERICAN DATUM 1983 datum	Grid	

Field					
Name	Easting	Northing	Coord System Name	North Alignment	
Wattenberg	3224065.1116	1343637.7116	CO83-NF on NORTH AMERICAN DATUM 1983 datum	Grid	

Clearance Summary										
Offset WellName	Offset Wellbore	Offset Slot	Offset Structure	Separation [ft]	MD[ft]	Diverging From[ft]	Ellipse Separation [ft]	Ellipse MD[ft]	Clearance Factor	Clearance MD[ft]
Musick-Mc Clintok #3	Musick-McClintok #3 (AWB)	Musick-Mc Clintok #3	C3 OFFSETS	59.91	1658.57	1658.57	44.25	1658.57	3.80	1673.23
Hambert R G #32-4	Hambert R G #32-4 (AWB)	Hambert R G #32-4	C3 OFFSETS	80.35	1762.48	1762.48	61.31	1771.65	4.20	1788.06
Geraldine #32-1	Geraldine #32-1 (AWB)	Geraldine #32-1	C3 OFFSETS	86.83	869.42	9780.00	74.24	967.85	6.39	1148.29
HSR-Munds #13-29	HSR-Munds #13-29 (AWB)	HSR-Munds #13-29	C3 OFFSETS	98.49	6406.16	6406.16	31.82	6414.04	1.48	6414.04
Hambert G #32-4X	Hambert G #32-4X (AWB)	Hambert G #32-4X	C3 OFFSETS	118.19	705.38	705.38	108.02	754.59	10.13	1082.68
UPRR 21 PAN AM A #1	UPRR 21 PAN AM A #1 (AWB)	UPRR 21 PAN AM A #1	C3 OFFSETS	133.04	5957.24	5957.24	70.14	5971.13	2.11	5971.13
Spayd #33-29	Spayd #33-29 (AWB)	Spayd #33-29	C3 OFFSETS	416.15	8136.48	8136.48	338.36	8136.48	5.35	8136.48
MUSICK_MCCLINTOCK #3	MUSICK_MC CLINTOCK #3 (AWB)	Slot #1	C3 OFFSETS	685.46	1345.14	1345.14	688.27	7.00	693.02	7.00
Rural Land PC G #32-30D	Rural Land PC G #32-30D (AWB)	Rural Land PC G #32-30D	C3 OFFSETS	804.18	5261.68	5261.68	759.32	5265.75	17.80	5413.39
Spayd #19-29	Spayd #19-29 (AWB)	Spayd #19-29	C3 OFFSETS	813.63	7562.34	7562.34	739.14	7627.95	10.69	7988.85
Irene G #30-63-1H	Irene G #30-63-1HN	Irene G #30-63-1H	C3 OFFSETS	1062.45	7472.18	7472.18	997.58	7480.31	16.14	7627.95

All data is in Feet unless otherwise stated
Coordinates are from Slot MD's are from Rig and TVD's are from Rig (Planned Datum #1 4901.0ft above Mean Sea Level)
Vertical Section is from 0.00N 0.00E on azimuth 353.260 degrees
Prepared by Integrated Petroleum Technologies, Inc.
Date Printed: 3-Mar-2014



SYSDRILL
Closest Approach + Clearance Factor Summary Report
Wellbore: SWD C3A (PWB)

Clearance Summary										
Offset WellName	Offset Wellbore	Offset Slot	Offset Structure	Separation [ft]	MD[ft]	Diverging From[ft]	Ellipse Separation [ft]	Ellipse MD[ft]	Clearance Factor	Clearance MD[ft]
N	(AWB)	N								
Rural Land PC G #32-31D	Rural Land PC G #32-31D (AWB)	Rural Land PC G #32-31D	C3 OFFSETS	1062.84	2280.18	2280.18	1044.44	2329.40	40.12	3723.75
Weinmaster #G32-29D	Weinmaster #G32-29D (AWB)	Weinmaster #G32-29D	C3 OFFSETS	1064.28	5331.36	5331.36	2139.31	15.00	2071.70	15.00
Musick-Mc Clintok #5	Musick-McClintok #5 (AWB)	Musick-Mc Clintok #5	C3 OFFSETS	1129.62	1410.76	1410.76	1113.52	1541.99	34.48	4954.07
Oster G #30-16	Oster G #30-16 (AWB)	Oster G #30-16	C3 OFFSETS	1131.84	5944.53	5944.53	1069.20	6053.15	16.55	7234.25
Irene G #30-64-1HN	Irene G #30-64-1HN (AWB)	Irene G #30-64-1HN	C3 OFFSETS	1168.58	7651.40	7651.40	1094.94	7644.36	15.85	7611.55
HSR Dickerson #14-29A	HSR Dickerson #14-29A (AWB)	HSR Dickerson #14-29A	C3 OFFSETS	1168.66	5446.19	5446.19	1110.47	5561.02	18.00	6922.57
Hambert R G #32-5	Hambert R G #32-5 (AWB)	Hambert R G #32-5	C3 OFFSETS	1209.07	700.00	700.00	1199.09	721.78	60.38	7824.80
Land #31-11	Land #31-11 (AWB)	Land #31-11	C3 OFFSETS	1250.13	2514.76	2514.76	1222.50	2657.48	29.75	5544.62
Rural Land PC G #31-28D	Rural Land PC G #31-28D (AWB)	Rural Land PC G #31-28D	C3 OFFSETS	1258.71	402.00	402.00	1255.34	410.10	31.81	8710.63
Rural Land PC G #31-27D	Rural Land PC G #31-27D (AWB)	Rural Land PC G #31-27D	C3 OFFSETS	1277.32	201.00	201.00	1275.07	246.06	27.81	7824.80
Hambert R G #32-3	Hambert R G #32-3 (AWB)	Hambert R G #32-3	C3 OFFSETS	1306.56	721.78	721.78	1294.95	1082.68	38.74	5741.47
Oster G #30-16X	Oster G #30-16X (AWB)	Oster G #30-16X	C3 OFFSETS	1351.24	6846.54	6846.54	1279.58	6971.78	17.46	7791.99
W MUSICK-M CCLINTOCK #6	W MUSICK-MC CLINTOCK #6 (AWB)	MUSICK-M CCLINTOCK #6	C3 OFFSETS	1354.21	7.00	7.00				
Rural Land #41-31 #1	Rural Land #41-31 #1 (AWB)	Rural Land #41-31 #1	C3 OFFSETS	1373.20	2200.15	2200.15	1348.42	2345.80	32.30	5938.32
MUSICK #1-32	MUSICK #1-32 (AWB)	MUSICK #1-32	C3 OFFSETS	1646.57	705.38	705.38	1636.31	738.19	55.42	8284.12
Hambert R G #32-6	Hambert R G #32-6 (AWB)	Hambert R G #32-6	C3 OFFSETS	1675.14	700.00	700.00	1665.33	721.78	63.03	7874.02
CPC-Land #31-2	CPC-Land #31-2 (AWB)	CPC-Land #31-2	C3 OFFSETS	1766.34	705.38	705.38	1755.73	738.19	55.97	7677.17
Musick-Mc Clintok #2	Musick-McClintok #2 (AWB)	Musick-Mc Clintok #2	C3 OFFSETS	1804.96	700.00	700.00	1796.51	721.78	73.75	4970.47
MUSICK-M CCLINTOCK #5	MUSICK-MC CLINTOCK #5 (AWB)	Slot #2	C3 OFFSETS	1875.01	885.83	885.83	1874.00	7.00	1885.22	7.00

All data is in Feet unless otherwise stated
Coordinates are from Slot MD's are from Rig and TVD's are from Rig (Planned Datum #1 4901.0ft above Mean Sea Level)
Vertical Section is from 0.00N 0.00E on azimuth 353.260 degrees
Prepared by Integrated Petroleum Technologies, Inc.
Date Printed: 3-Mar-2014



SYSDRILL
Closest Approach + Clearance Factor Summary Report
Wellbore: SWD C3A (PWB)

Clearance Summary										
Offset WellName	Offset Wellbore	Offset Slot	Offset Structure	Separation [ft]	MD[ft]	Diverging From[ft]	Ellipse Separation [ft]	Ellipse MD[ft]	Clearance Factor	Clearance MD[ft]
Weinmaster #G32-19D	Weinmaster #G32-19D (AWB)	Weinmaster #G32-19D	C3 OFFSETS	1912.35	3674.54	3674.54	1881.03	3854.99	42.19	5741.47
Rural #31-15	Rural #31-15 (AWB)	Rural #31-15	C3 OFFSETS	1934.98	705.38	705.38	1924.41	853.02	45.95	7759.19
Weinmaster G #32-18	Weinmaster G #32-18 (AWB)	Weinmaster G #32-18	C3 OFFSETS	2127.29	705.38	705.38	2116.95	771.00	53.15	8366.14
Weinmaster #G32-17D	Weinmaster #G32-17D (AWB)	Weinmaster #G32-17D	C3 OFFSETS	2153.26	410.10	410.10	2149.84	426.51	55.85	8234.91
Weinmaster #G32-21D	Weinmaster #G32-21D (AWB)	Weinmaster #G32-21D	C3 OFFSETS	2160.02	705.38	705.38	2154.63	672.57	77.11	8316.93
UPRR 21 PAN AM "J" #1	UPRR 21 PAN AM "J" #1 (AWB)	UPRR 21 PAN AM "J" #1	C3 OFFSETS	2543.65	5267.02	5267.02	2486.48	5528.22	32.63	8415.35
CPC-Land #31-1	CPC-Land #31-1 (AWB)	CPC-Land #31-1	C3 OFFSETS	2570.72	2952.76	2952.76	2537.74	3231.63	40.25	7726.38
Oster #G-30-15	Oster #G-30-15 (AWB)	Oster #G-30-15	C3 OFFSETS	2682.96	6481.40	6481.40	2614.17	6742.13	33.58	8103.67
Rural Land 32-31 #2	Rural Land 32-31 #2 (AWB)	Rural Land 32-31 #2	C3 OFFSETS	2904.93	705.38	705.38	2894.35	787.40	57.01	8251.31
Land #31-13	Land #31-13 (AWB)	Land #31-13	C3 OFFSETS	3053.40	705.38	705.38	3043.13	771.00	61.17	7824.80