



56 Arm Caliper  
Wall Thickness Tool  
(ODT)

Company		Whiting Oil and Gas		Location:		API # : 05-123-05758		Other Services	
Well		Nelson #1		660' North & 660' West					
Field		Redtail		SEC 20 TWP 10N RGE 58W					
County		Weld		State		Colorado			
Permanent Datum		GL		Elevation		4762		Elevation	
Log Measured From		KB						K.B. 4771	
Drilling Measured From		GL						D.F. 4770	
								G.L. 4762	
Date		2-2-2014							
Run Number		2							
Depth Driller		6695							
Depth Logger		300							
Bottom Logged Interval		140							
Top Log Interval		Surface							
Open Hole Size		12.25							
Type Fluid		Water							
Density / Viscosity									
Max. Recorded Temp.									
Estimated Cement Top									
Time Well Ready									
Time Logger on Bottom									
Equipment Number		4740							
Location		Greeley							
Recorded By		Jeremiah Bullard							
Witnessed By		Mike Staab							
Run Number		Bit		From		To		Size	
One		12.25		0		100			
Two		8.875		100		6695			
Casing Record		Size		Wgt/Ft		Top		Bottom	
Surface String									
Prot. String									
Production String									
Liner									

<<< Fold Here >>>


All interpretations are opinions based on inferences from electrical or other measurements and we cannot and do not guarantee the accuracy or correctness of any interpretation, and we shall not, except in the case of gross or willful negligence on our part, be liable or responsible for any loss, costs, damages, or expenses incurred or sustained by anyone resulting from any interpretation made by any of our officers, agents or employees. These interpretations are also subject to our general terms and conditions set out in our current Price Schedule.

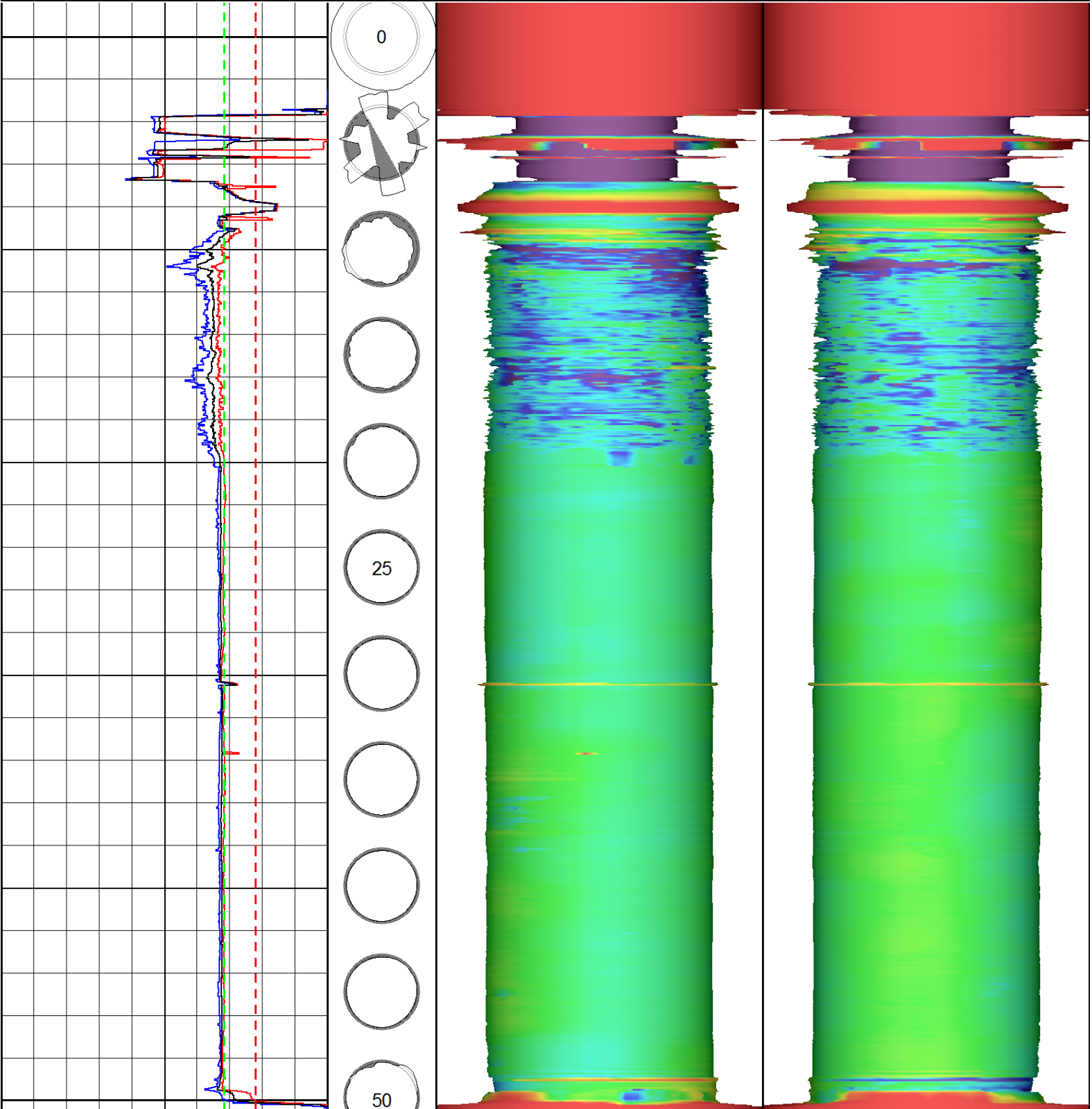
Comments

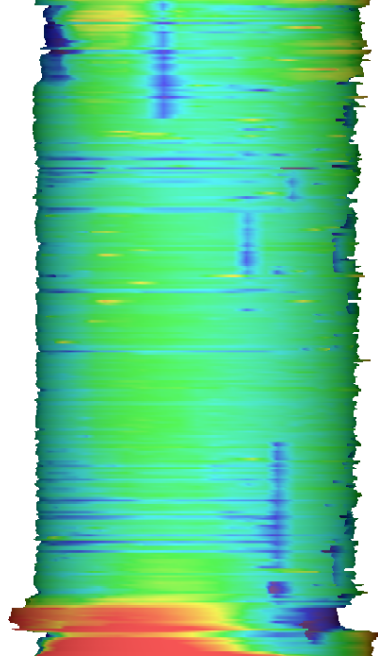
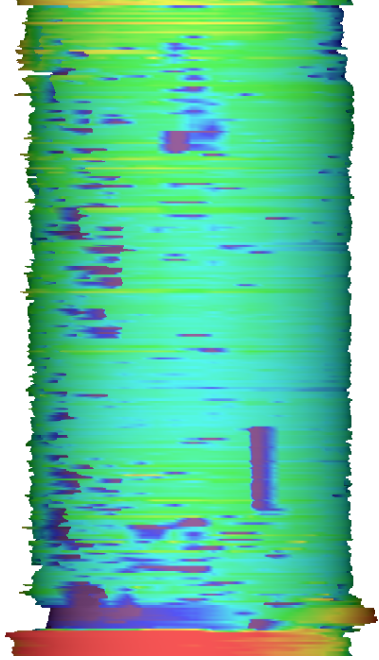
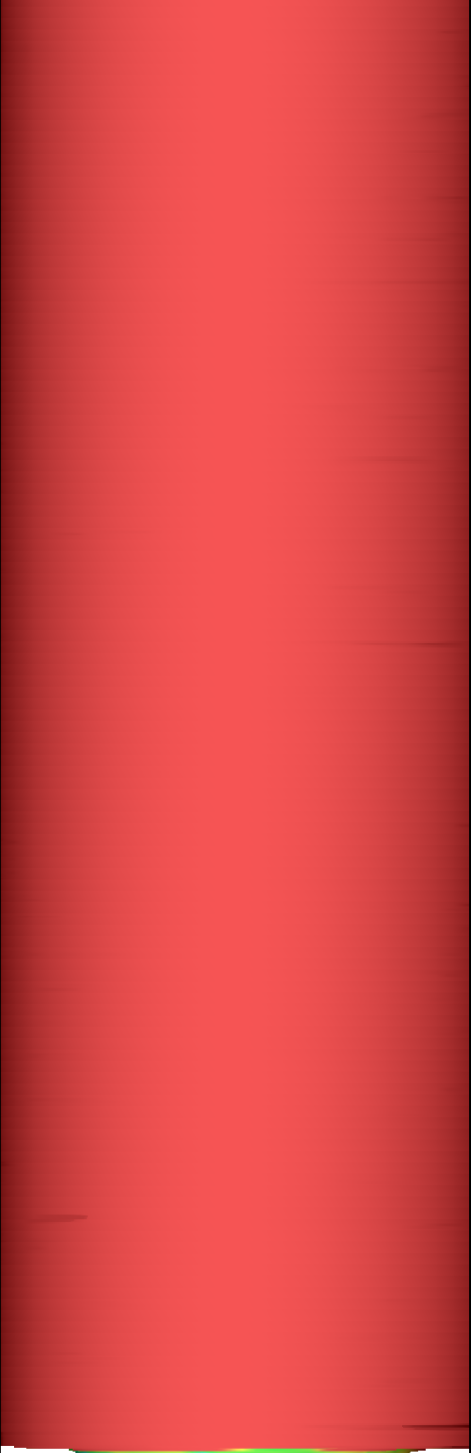
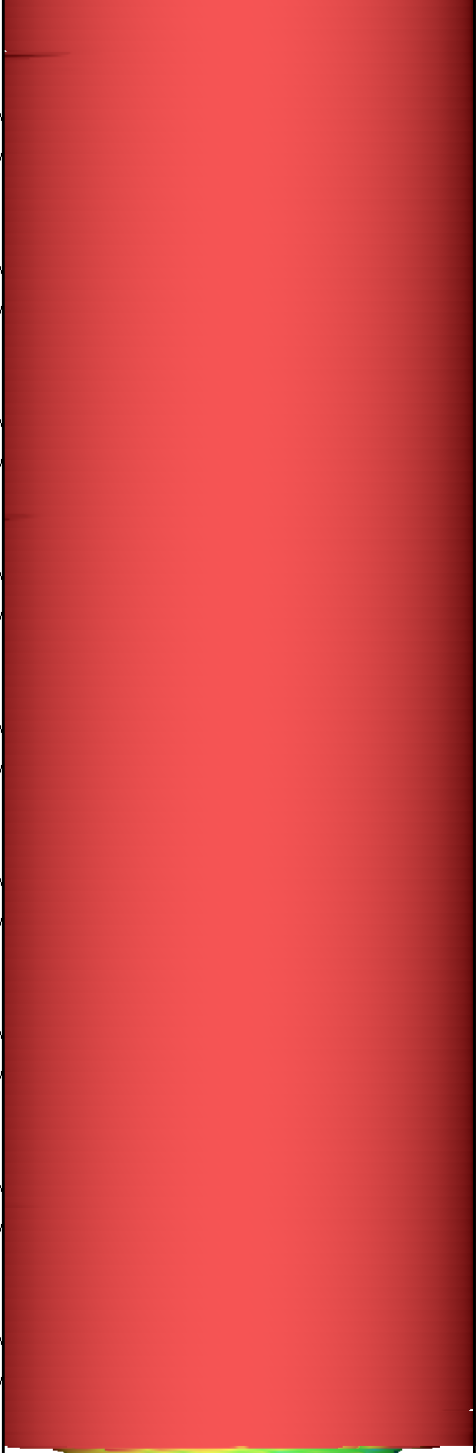
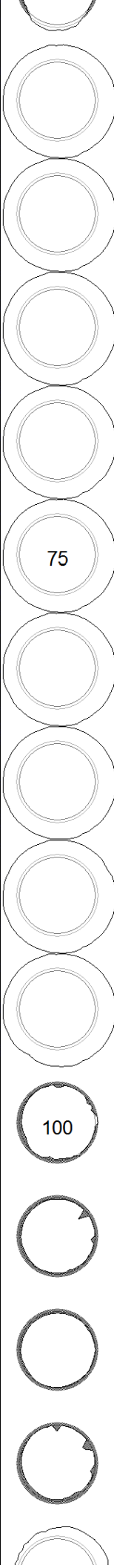
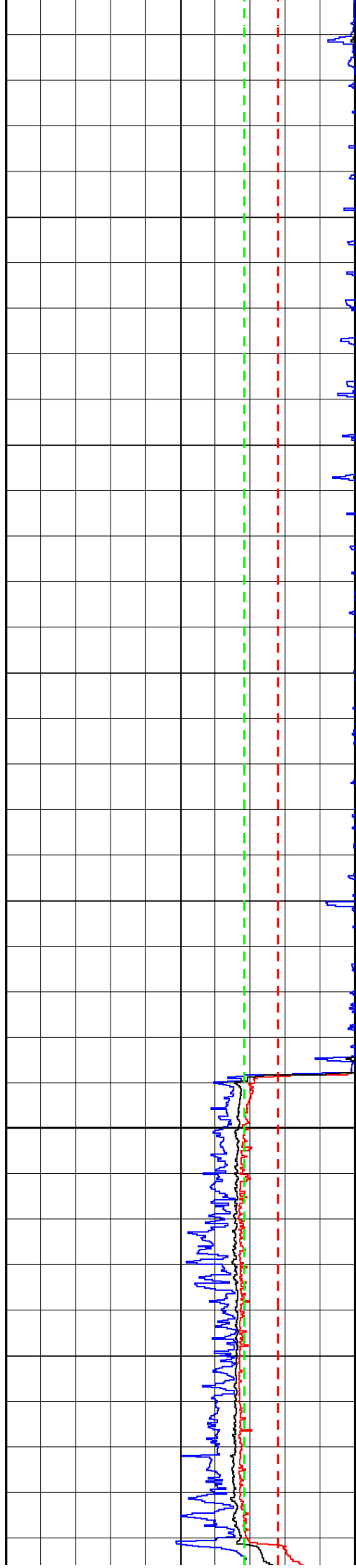


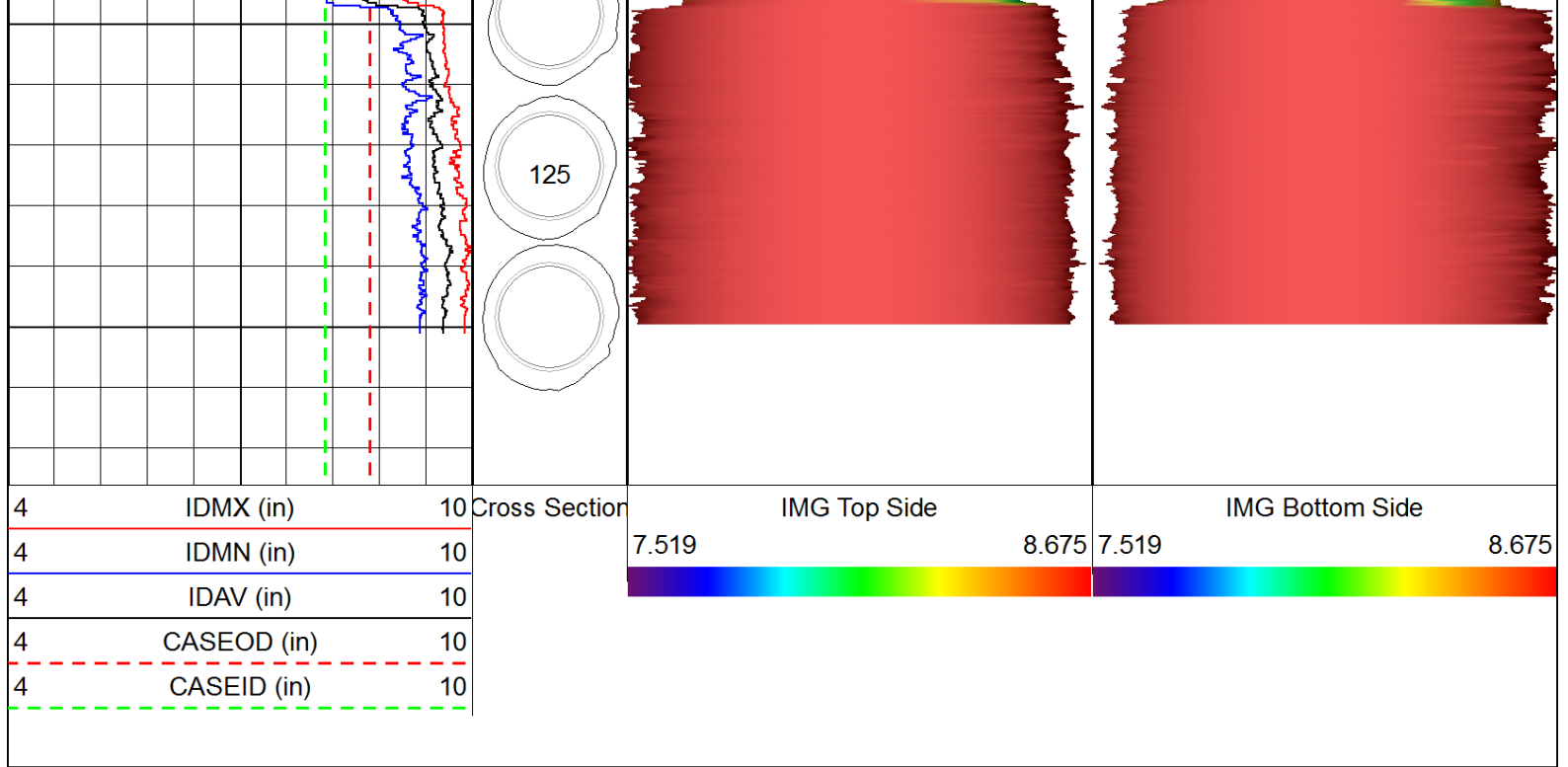
Main Pass

Database File: nelson #1.db  
Dataset Pathname: pass7  
Presentation Format: xi40\_3d  
Dataset Creation: Mon Feb 03 13:32:43 2014 by Log SCH 120126  
Charted by: Depth in Feet scaled 1:75

4	IDMX (in)	10	Cross Section	IMG Top Side		IMG Bottom Side	
4	IDMN (in)	10		7.519	8.675	7.519	8.675
4	IDAV (in)	10					
4	CASEOD (in)	10					
4	CASEID (in)	10					







### Calibration Report

Database File: nelson #1.db  
 Dataset Pathname: pass7  
 Dataset Creation: Mon Feb 03 13:32:43 2014 by Log SCH 120126

### 56 Arm Multi Sensor Caliper Calibration Report

Serial Number: 10067  
 Tool Model: 56  
 Performed: Sun Feb 02 11:58:06 2014

Ref ID:	5.00	6.00	7.00	8.00	9.00	in
Arm1	1.77	3.04	3.59	4.04	4.54	
Arm2	1.72	3.03	3.57	4.03	4.53	
Arm3	1.71	3.04	3.57	4.03	4.52	
Arm4	1.71	3.02	3.55	4.03	4.52	
Arm5	1.78	3.05	3.56	4.04	4.51	
Arm6	1.74	3.06	3.56	4.06	4.54	
Arm7	1.60	3.05	3.53	4.04	4.51	
Arm8	1.69	3.06	3.55	4.07	4.53	
Arm9	1.81	3.04	3.51	4.03	4.48	
Arm10	1.79	3.06	3.53	4.07	4.54	
Arm11	1.73	3.08	3.53	4.06	4.49	
Arm12	1.68	3.09	3.54	4.09	4.54	
Arm13	1.76	3.07	3.51	4.07	4.50	
Arm14	1.74	3.08	3.52	4.08	4.53	
Arm15	1.73	3.10	3.54	4.10	4.53	
Arm16	1.79	3.05	3.50	4.08	4.52	
Arm17	1.71	3.07	3.49	4.06	4.49	
Arm18	1.75	3.10	3.52	4.10	4.53	
Arm19	1.78	3.07	3.47	4.05	4.47	
Arm20	1.73	3.07	3.48	4.06	4.50	
Arm21	1.67	3.06	3.46	4.03	4.47	
Arm22	1.65	3.06	3.48	4.05	4.50	
Arm23	1.77	3.08	3.48	4.05	4.49	
Arm24	1.73	3.10	3.52	4.08	4.54	
Arm25	1.76	3.08	3.49	4.03	4.48	
Arm26	1.68	3.04	3.46	4.01	4.48	
Arm27	1.79	3.07	3.48	4.02	4.48	
Arm28	1.74	3.06	3.49	4.02	4.50	

Arm28	1.71	3.08	3.49	4.02	4.50	
Arm29	1.81	3.04	3.51	4.00	4.50	
Arm30	1.71	3.04	3.48	4.00	4.50	
						* Bad

Calibration Report						
Serial Number:						
Tool Model:						
Performed:						
Ref ID:	5.00	6.00	7.00	8.00	9.00	in
Arm31	1.81	3.05	3.49	3.99	4.48	
Arm32	1.74	3.04	3.51	4.00	4.52	
Arm33	1.76	3.08	3.53	3.99	4.48	
Arm34	1.76	3.02	3.50	3.99	4.51	
Arm35	1.73	3.04	3.52	3.97	4.49	
Arm36	1.75	3.04	3.53	3.99	4.53	
Arm37	1.77	3.03	3.53	3.98	4.50	
Arm38	1.65	3.07	3.59	4.04	4.57	
Arm39	1.80	3.04	3.56	4.00	4.54	
Arm40	1.66	3.00	3.54	3.98	4.53	
Arm41	1.69	3.01	3.55	3.95	4.48	
Arm42	1.66	3.02	3.57	3.99	4.55	
Arm43	1.70	3.02	3.57	3.96	4.50	
Arm44	1.71	3.04	3.60	4.01	4.56	
Arm45	1.66	3.05	3.60	3.99	4.54	
Arm46	1.65	3.01	3.59	4.00	4.55	
Arm47	1.84	3.08	3.63	4.03	4.58	
Arm48	1.70	3.05	3.62	4.03	4.58	
Arm49	1.68	3.01	3.59	3.99	4.53	
Arm50	1.68	3.04	3.61	4.02	4.56	
Arm51	1.75	3.01	3.58	3.99	4.52	
Arm52	1.73	3.01	3.59	4.01	4.54	
Arm53	1.67	3.02	3.59	4.00	4.52	
Arm54	1.77	3.05	3.62	4.04	4.58	
Arm55	1.80	3.06	3.61	4.05	4.56	
Arm56	1.68	3.02	3.58	4.03	4.54	
						* Bad

XIPE verifications Calibration Report					
Performed:		Pre Verification	Post Verification	Casing Check	
Ref ID:		0.00	0.00	0.00	in
Min.		0.00	0.00	0.00	in
Max.		0.00	0.00	0.00	in
Avg.		0.00	0.00	0.00	in
Dia1		0.00	0.00	0.00	in
Dia2		0.00	0.00	0.00	in
Dia3		0.00	0.00	0.00	in
Dia4		0.00	0.00	0.00	in
Dia5		0.00	0.00	0.00	in
Dia6		0.00	0.00	0.00	in
Dia7		0.00	0.00	0.00	in
Dia8		0.00	0.00	0.00	in
Dia9		0.00	0.00	0.00	in
Dia10		0.00	0.00	0.00	in
Dia11		0.00	0.00	0.00	in
Dia12		0.00	0.00	0.00	in
Dia13		0.00	0.00	0.00	in
Dia14		0.00	0.00	0.00	in
Dia15		0.00	0.00	0.00	in
Dia16		0.00	0.00	0.00	in

Dia17	0.00	0.00	0.00	in
Dia18	0.00	0.00	0.00	in
Dia19	0.00	0.00	0.00	in
Dia20	0.00	0.00	0.00	in
Dia21	0.00	0.00	0.00	in
Dia22	0.00	0.00	0.00	in
Dia23	0.00	0.00	0.00	in
Dia24	0.00	0.00	0.00	in
Dia25	0.00	0.00	0.00	in
Dia26	0.00	0.00	0.00	in
Dia27	0.00	0.00	0.00	in
Dia28	0.00	0.00	0.00	in