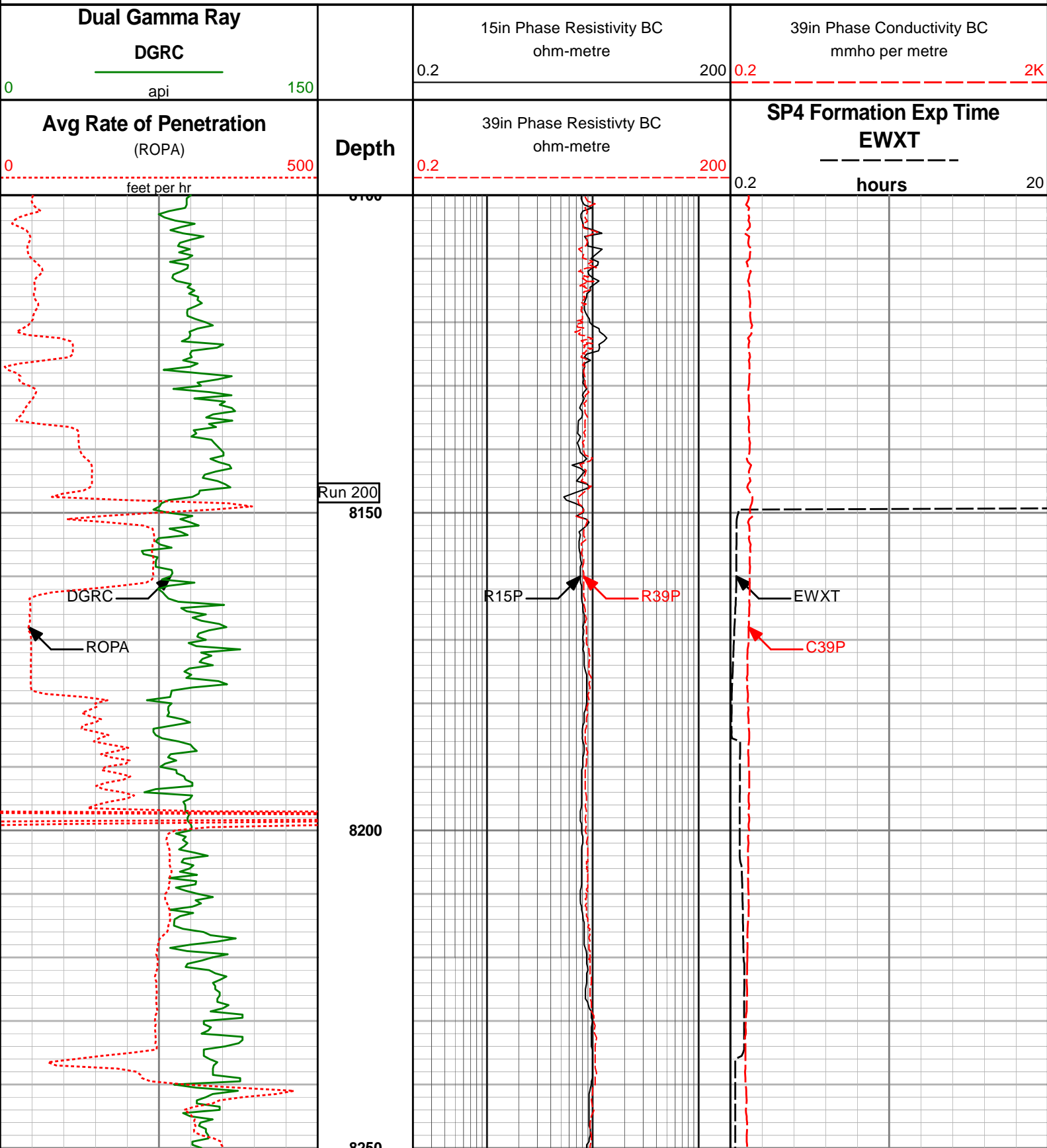
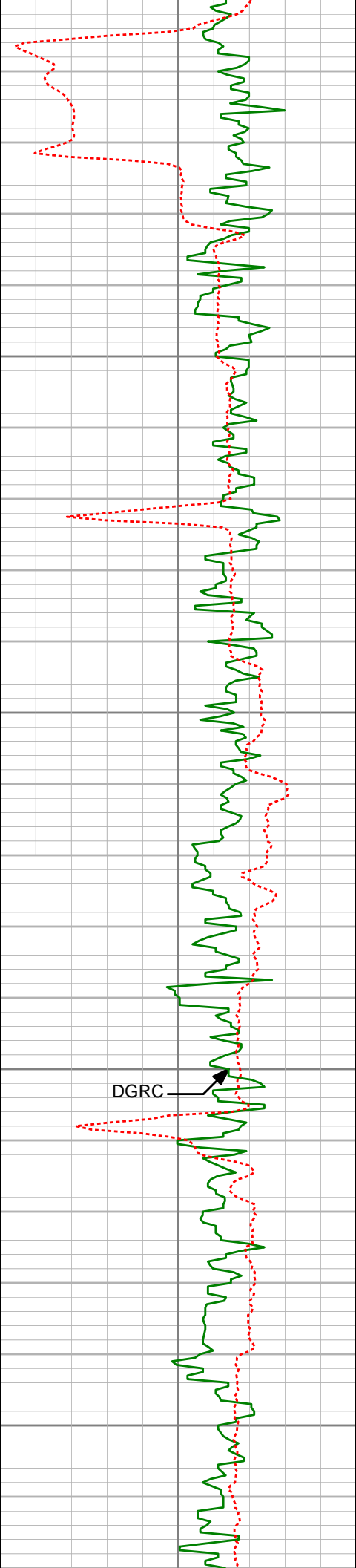


HALLIBURTON

MD Main Log 1:240

Grenemyer 35C-3HZ





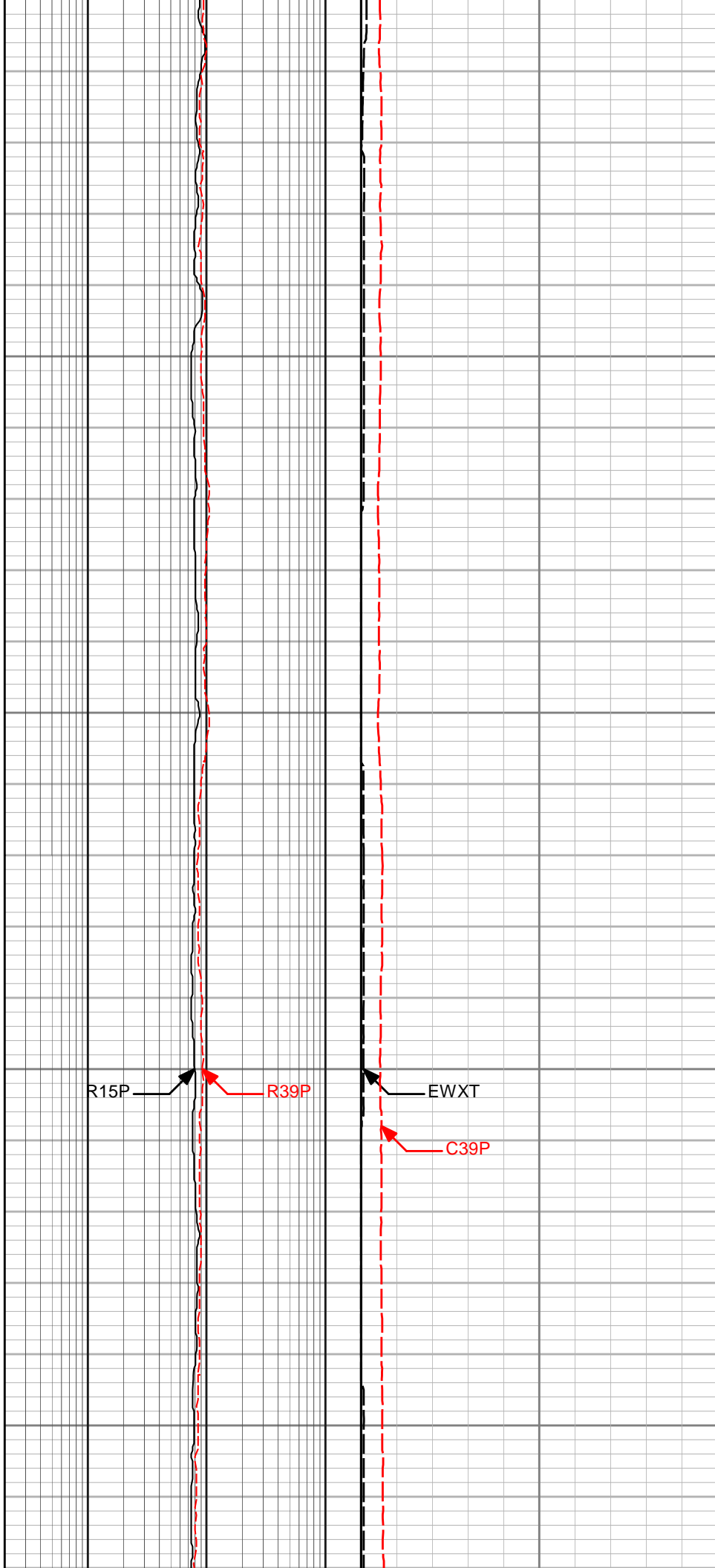
8250

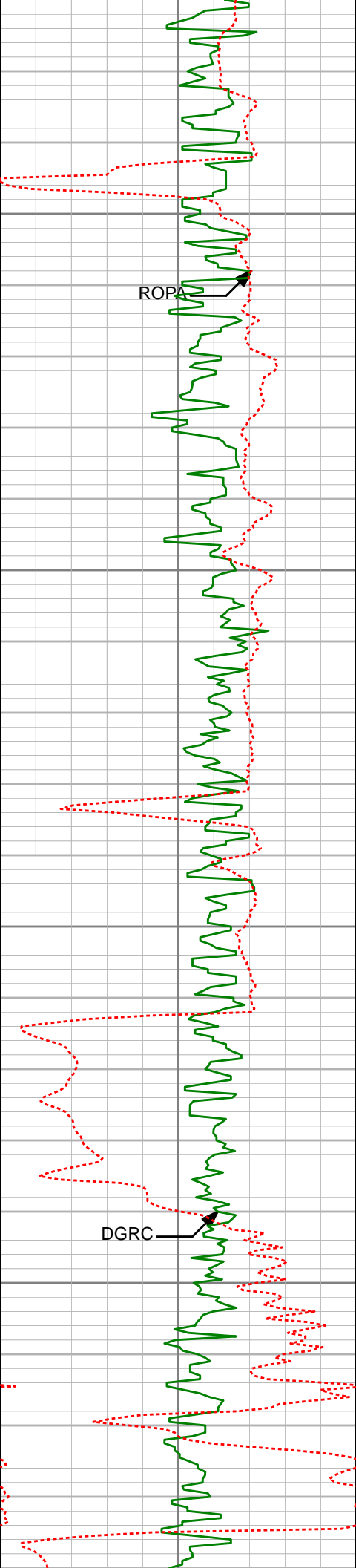
8300

8350

8400

8450



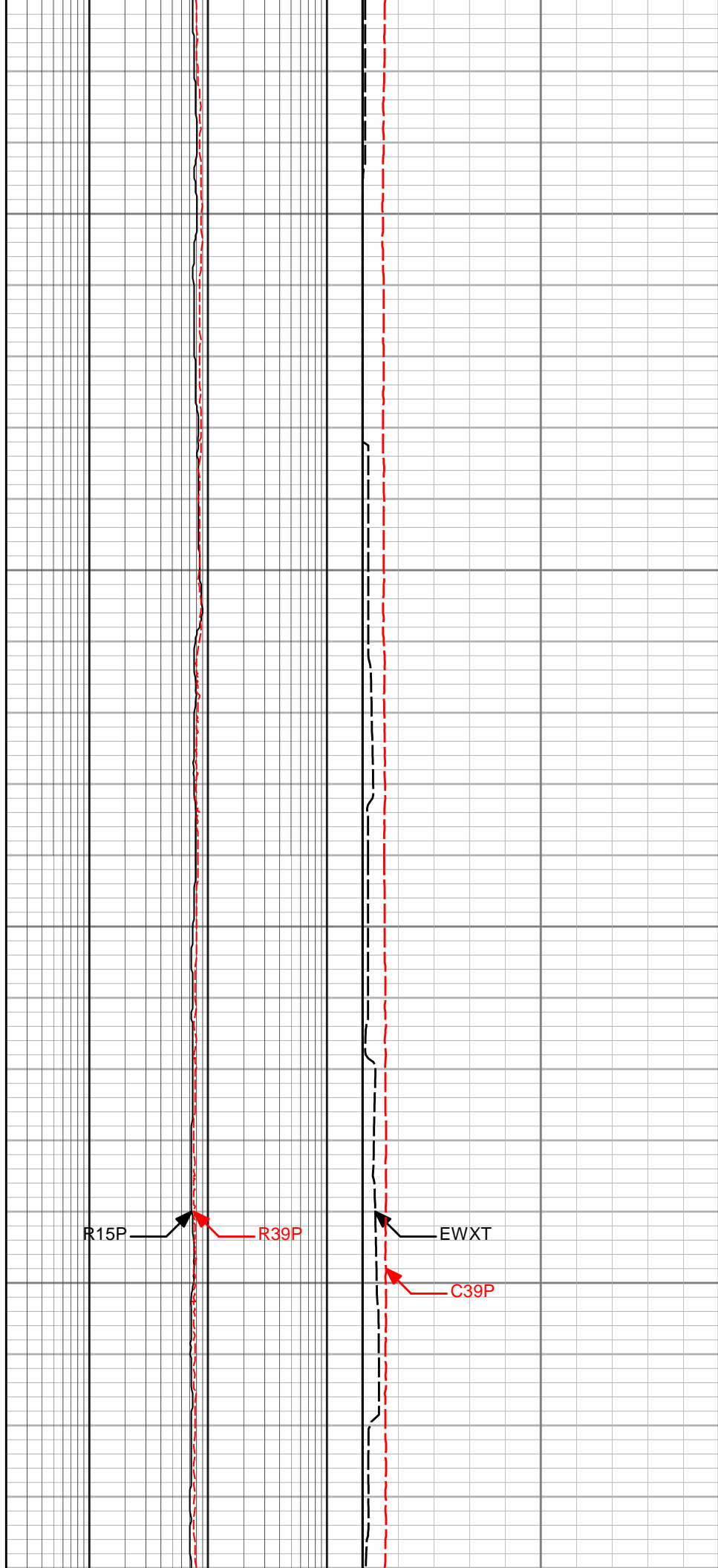


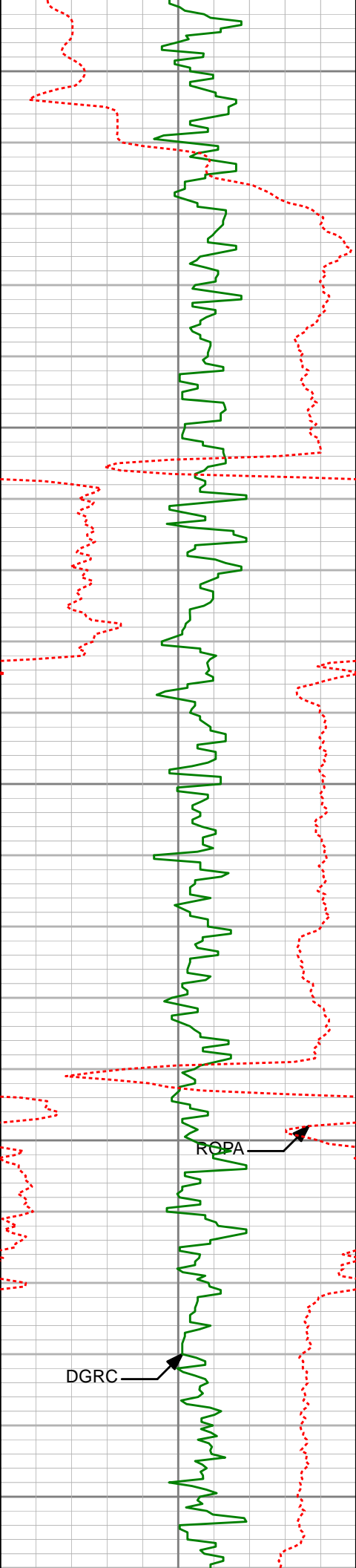
8500

8550

8600

8650





8700

8750

8800

8850

8900

DGRC

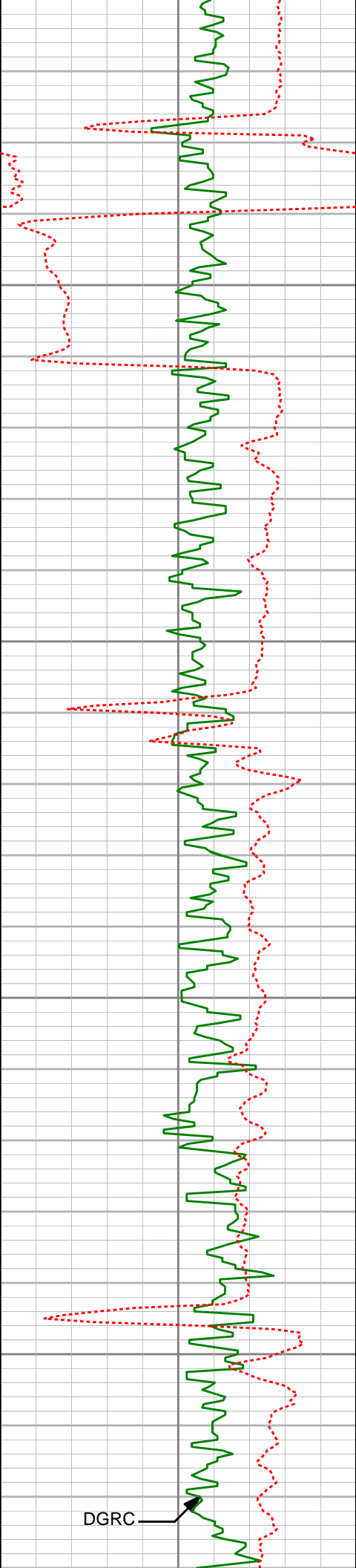
RQPA

R15P

R39P

EWXT

C39P



8950

9000

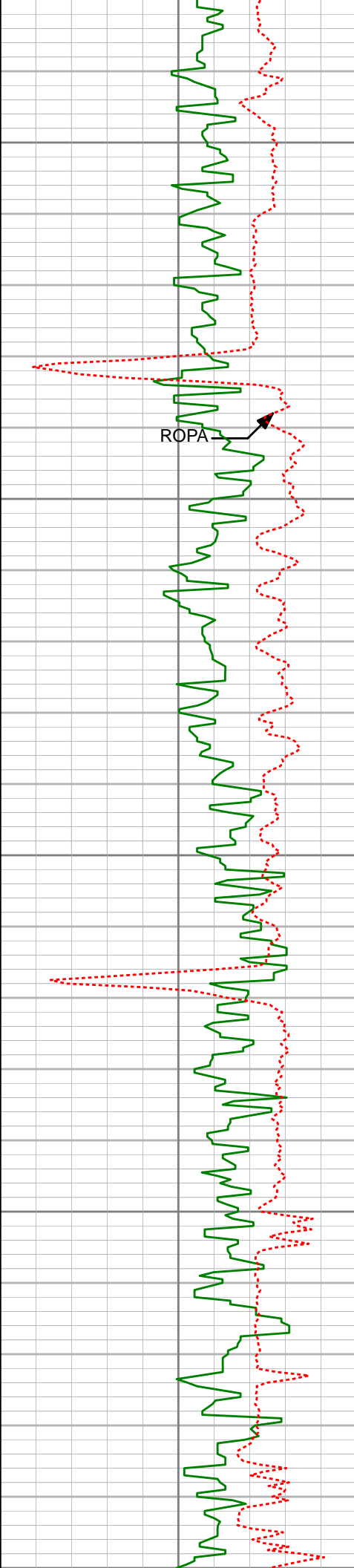
9050

9100

DGRC

R15P

EWXT



9150

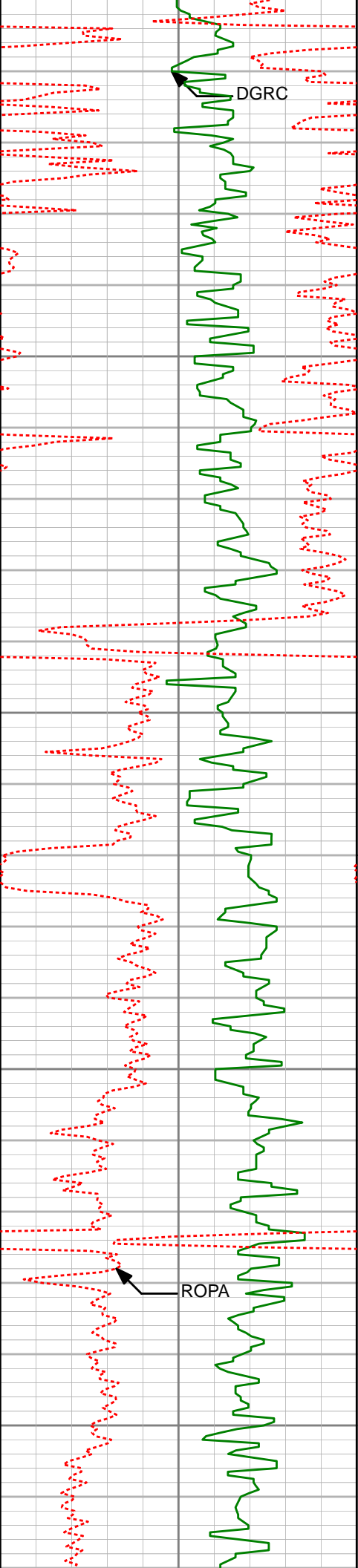
9200

9250

9300

9350





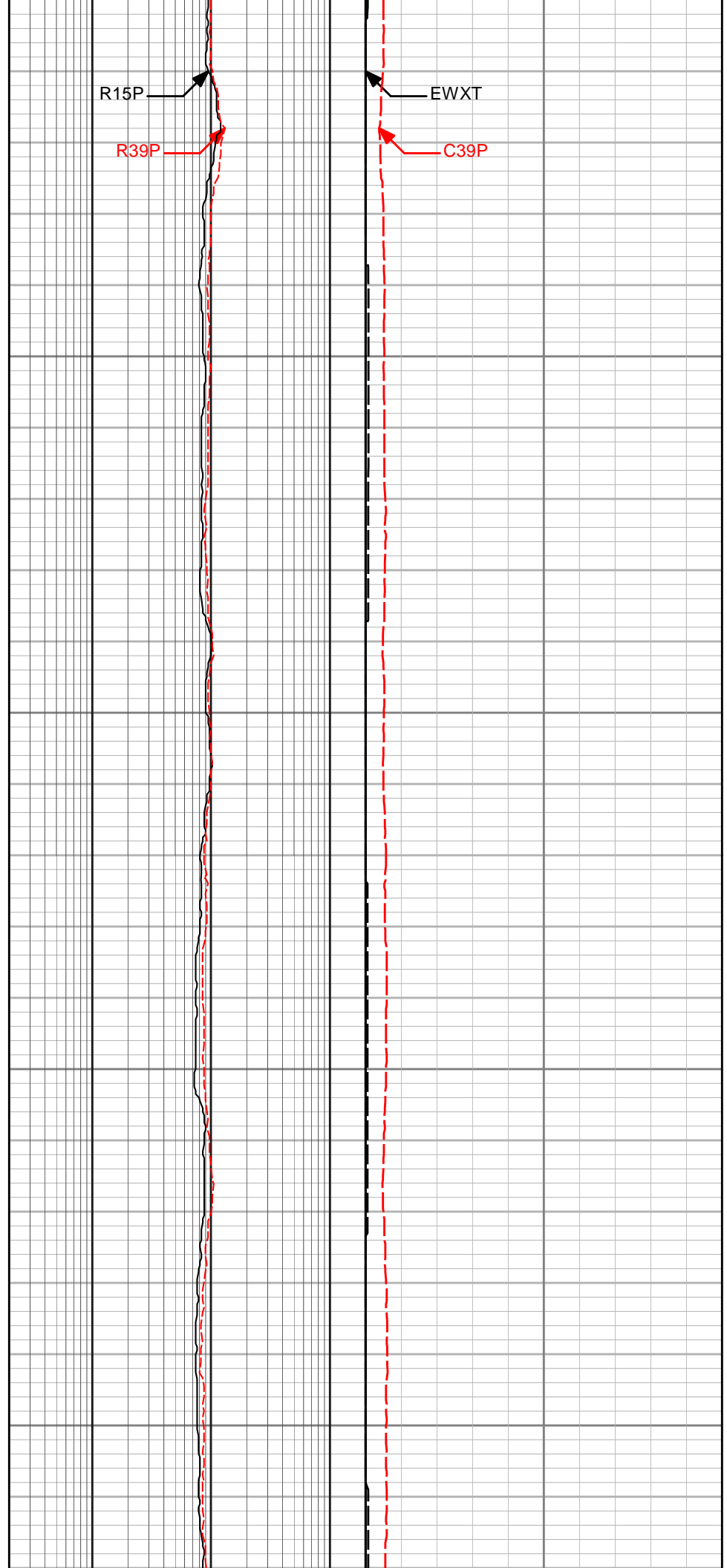
9350

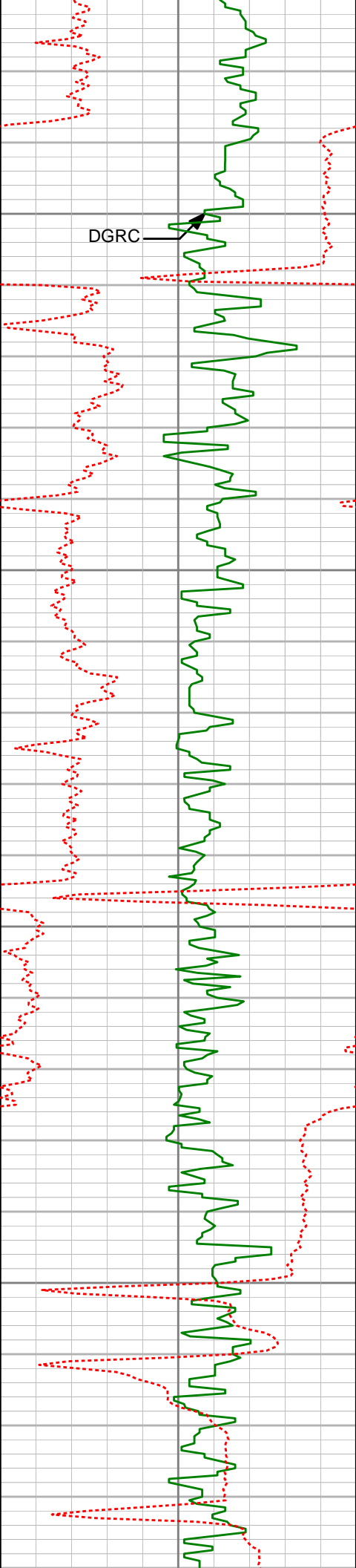
9400

9450

9500

9550





DGRC

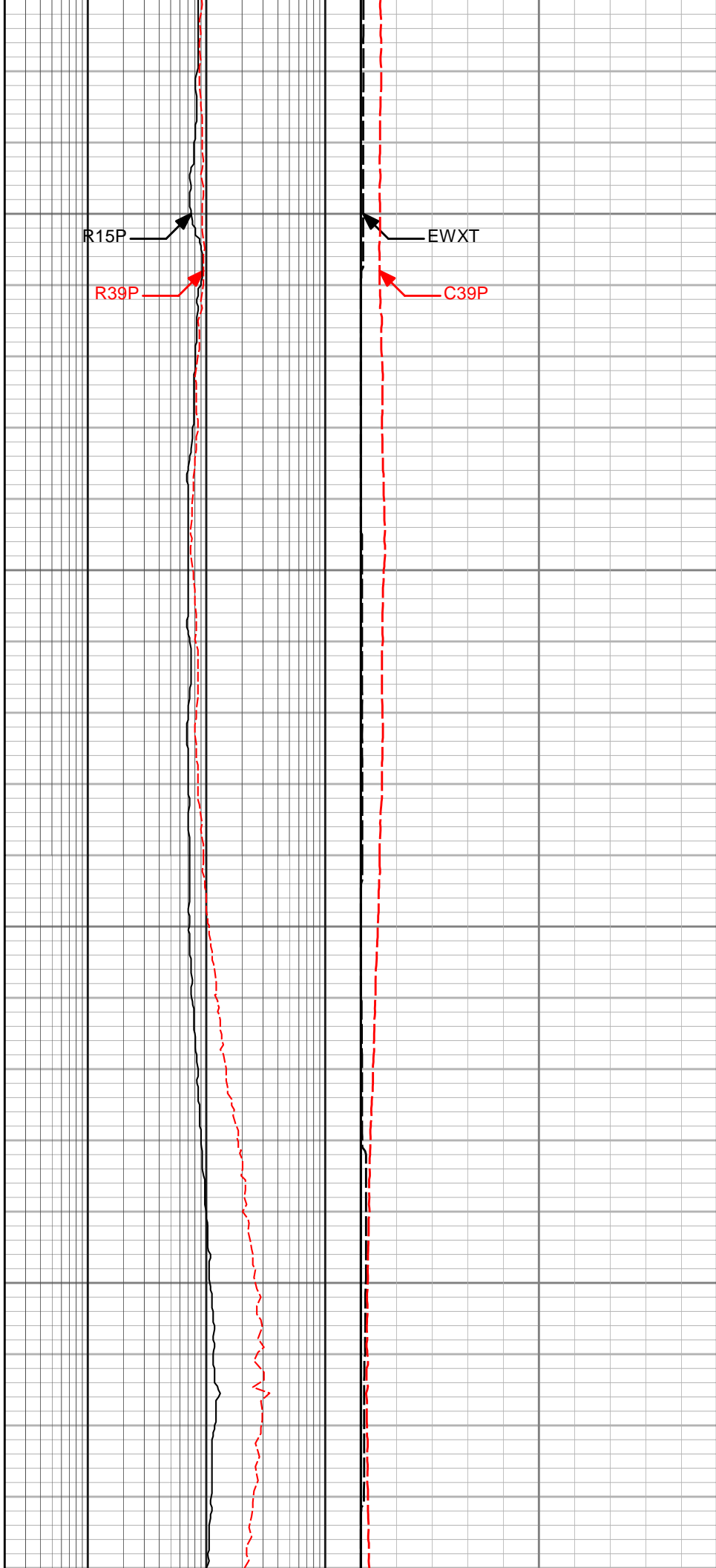


9600

9650

9700

9750



R15P



R39P

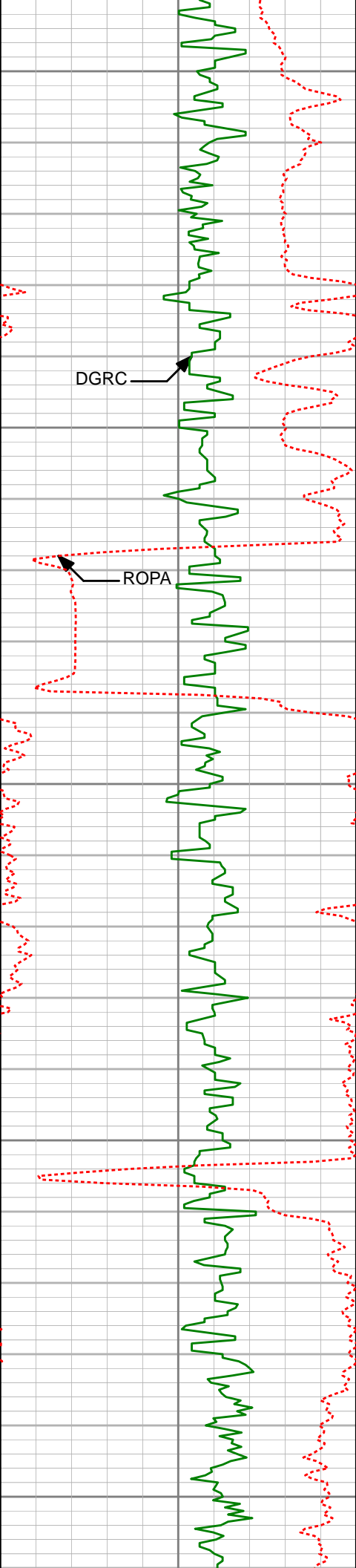


EWXT



C39P





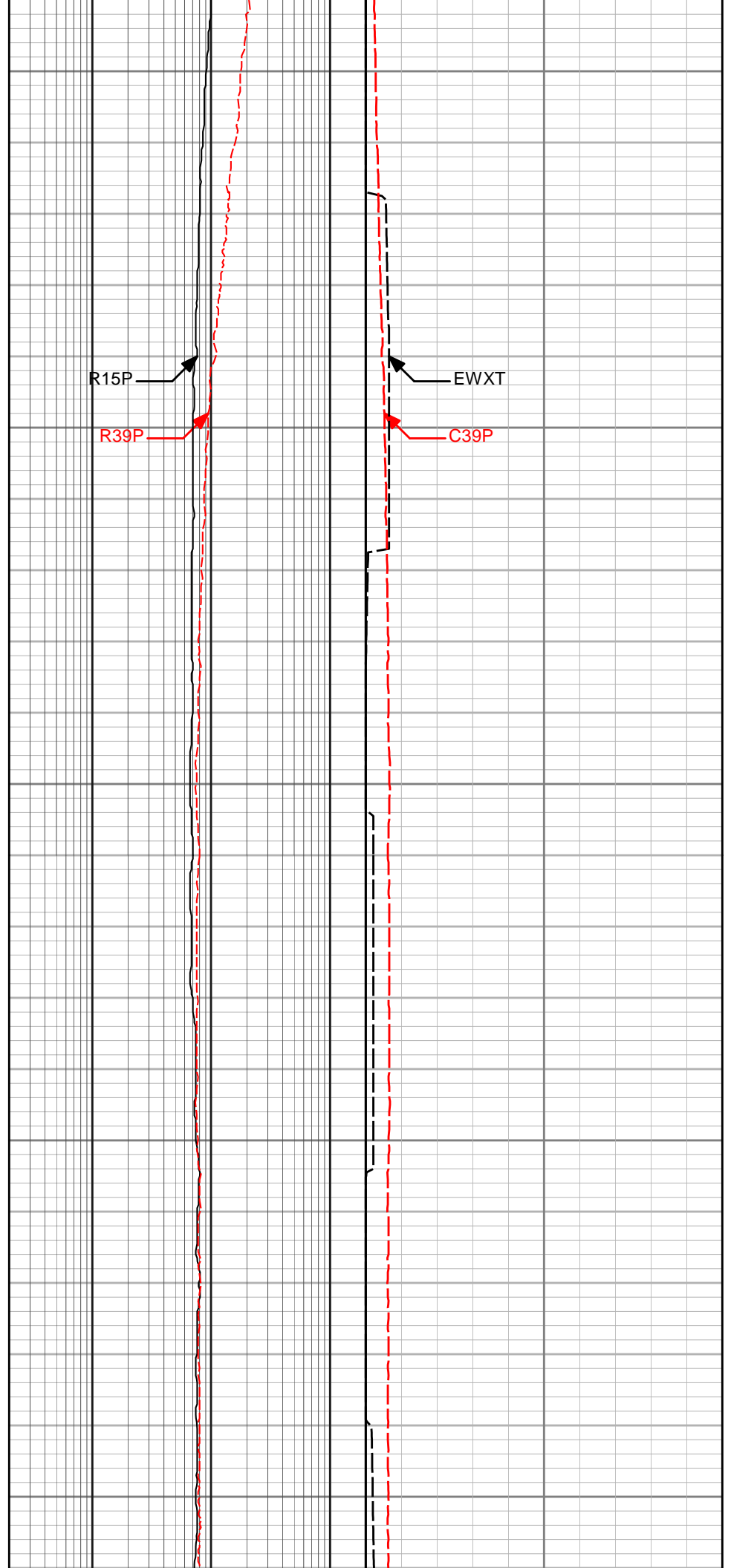
9800

9850

9900

9950

10000

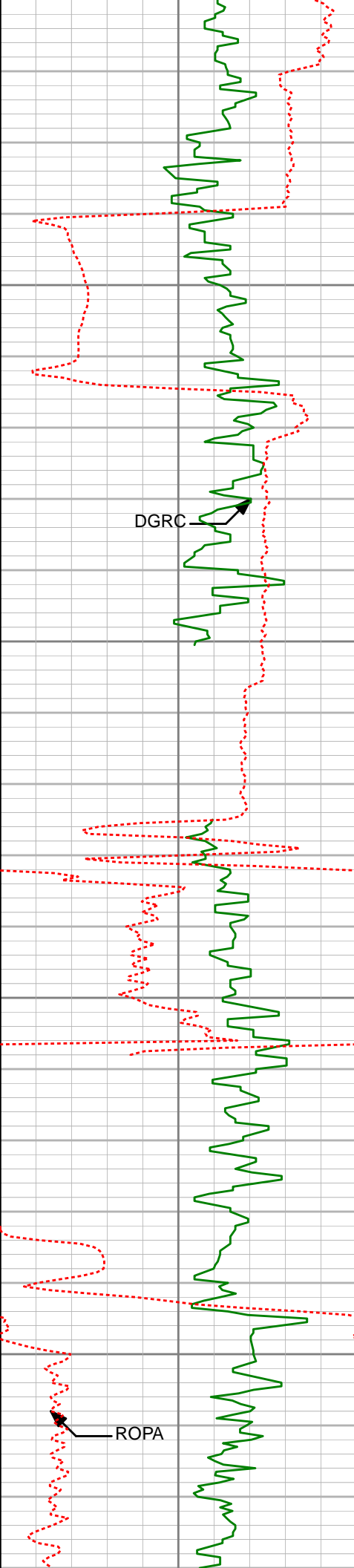


R15P

R39P

EWXT

C39P



10050

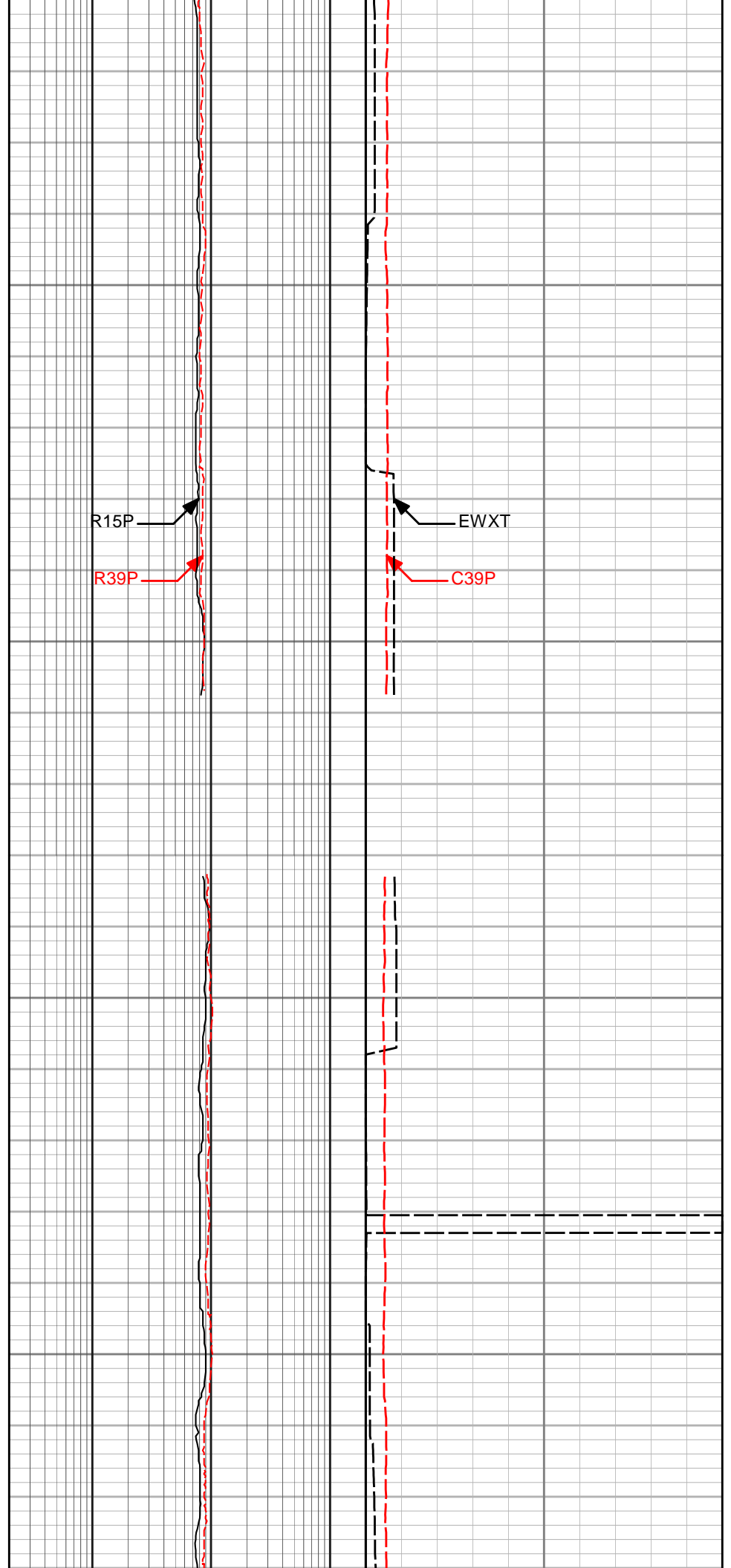
DGRC

10100

10150

10200

ROPA

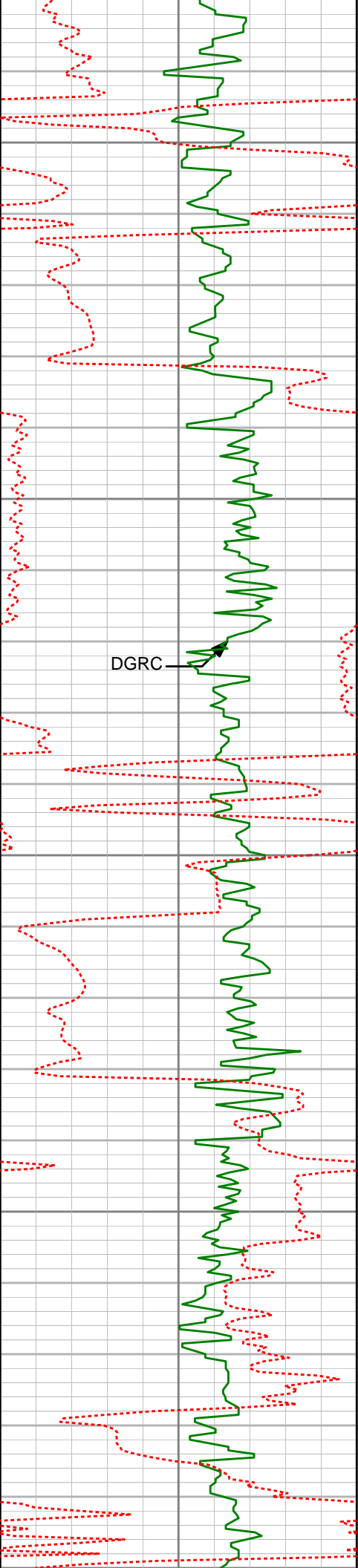


R15P

R39P

EWXT

C39P



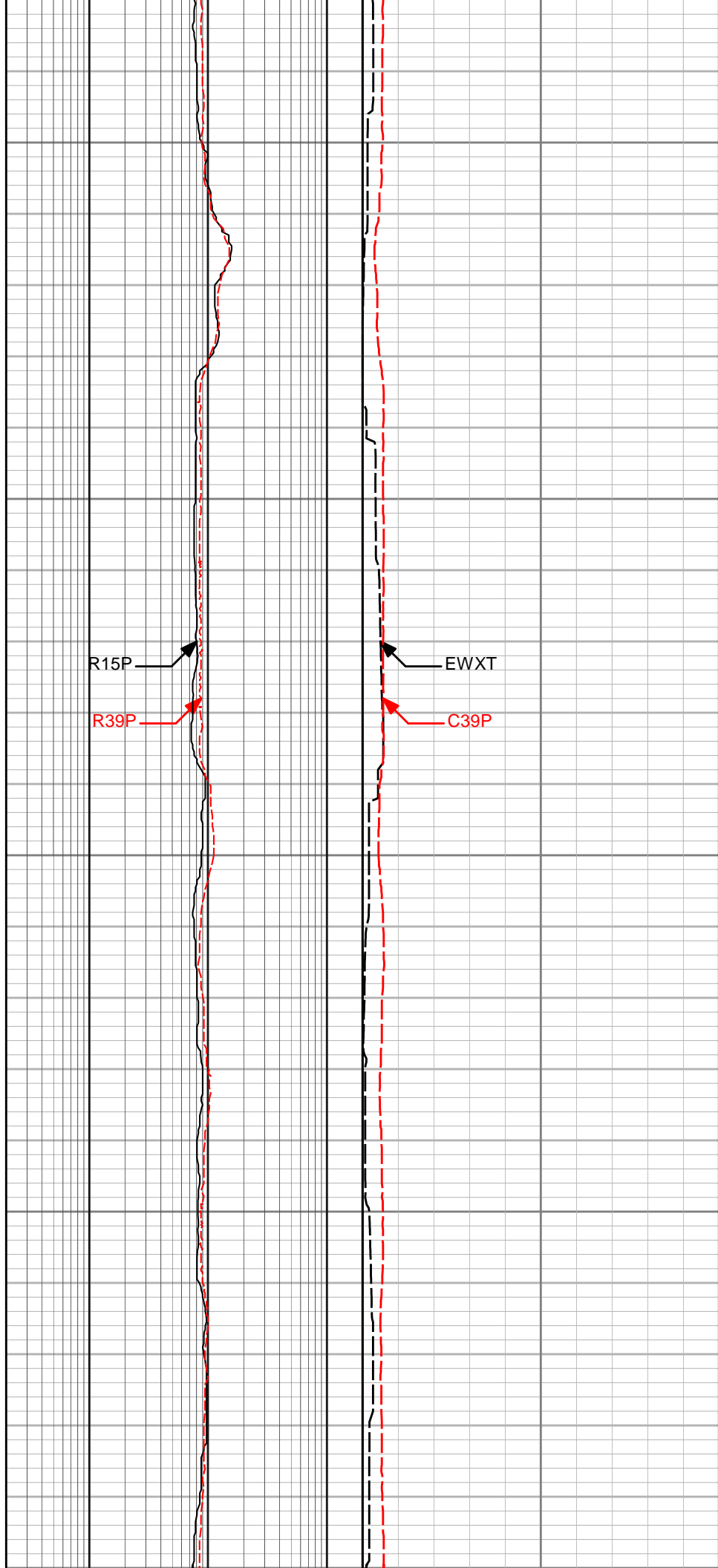
10250

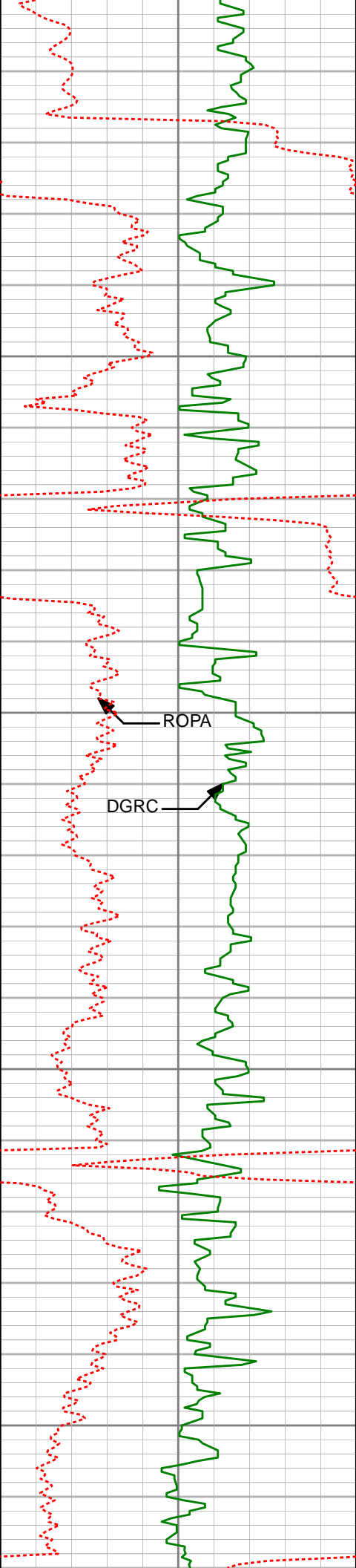
10300

10350

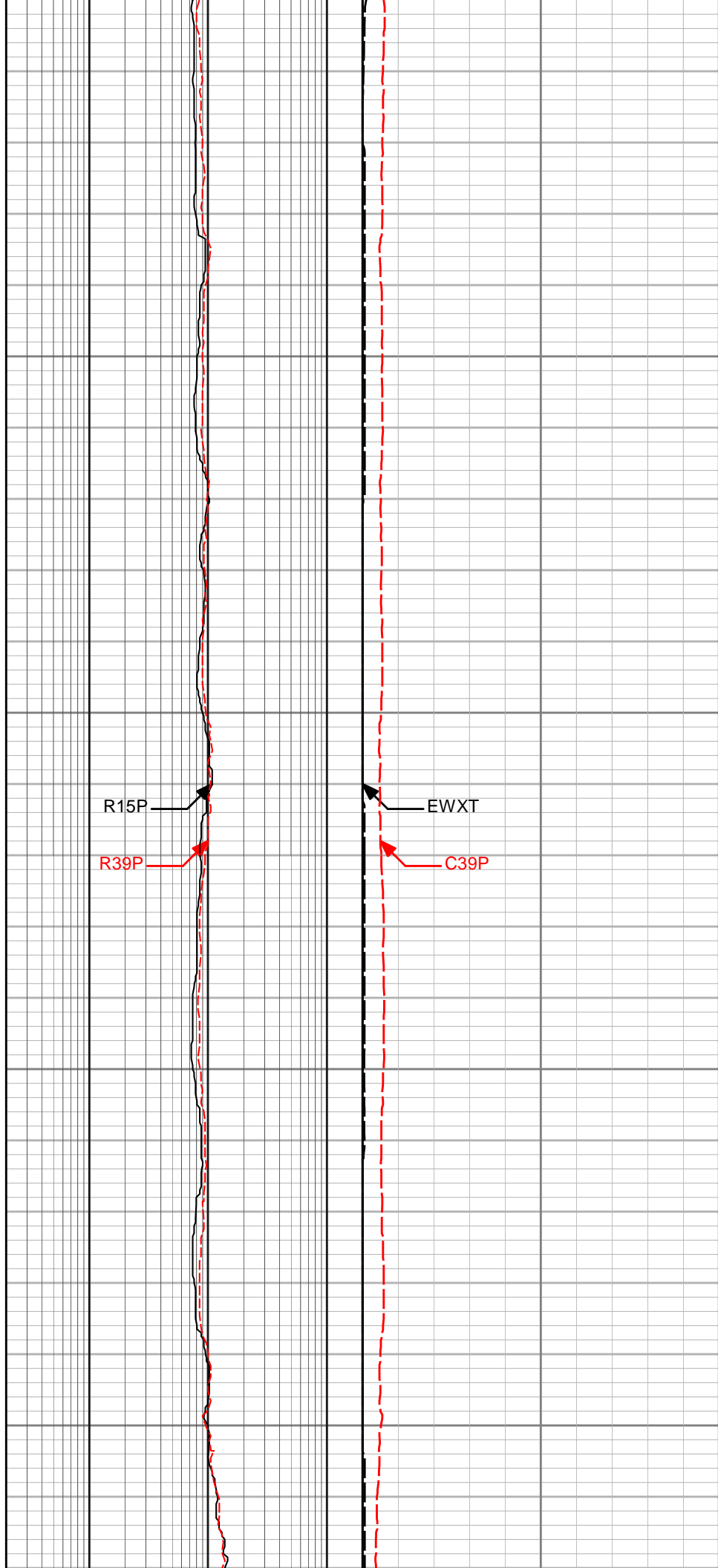
10400

10450



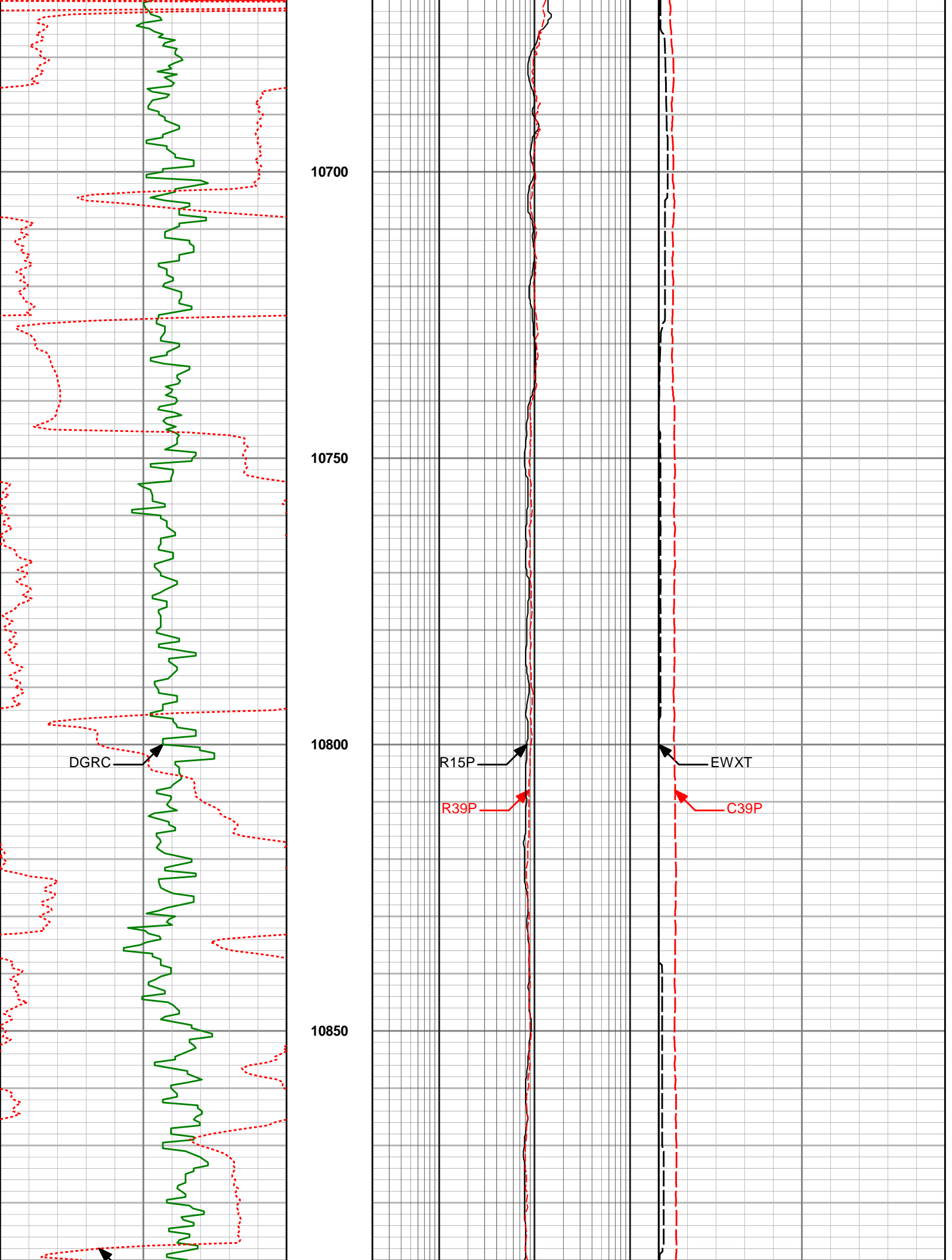


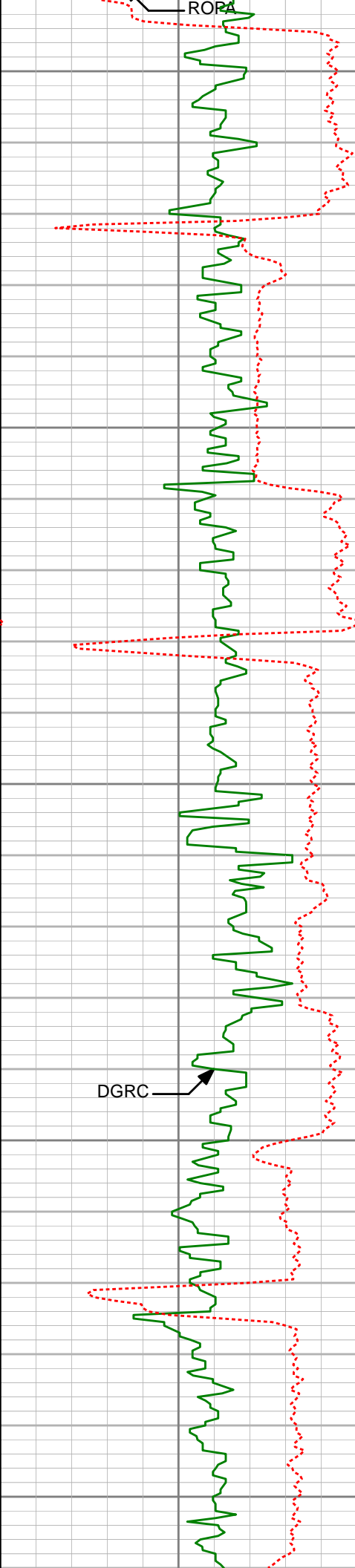
10450
10500
10550
10600
10650



R15P
R39P

EWXT
C39P





10900

10950

11000

11050

11100

DGRC



R15P



R39P

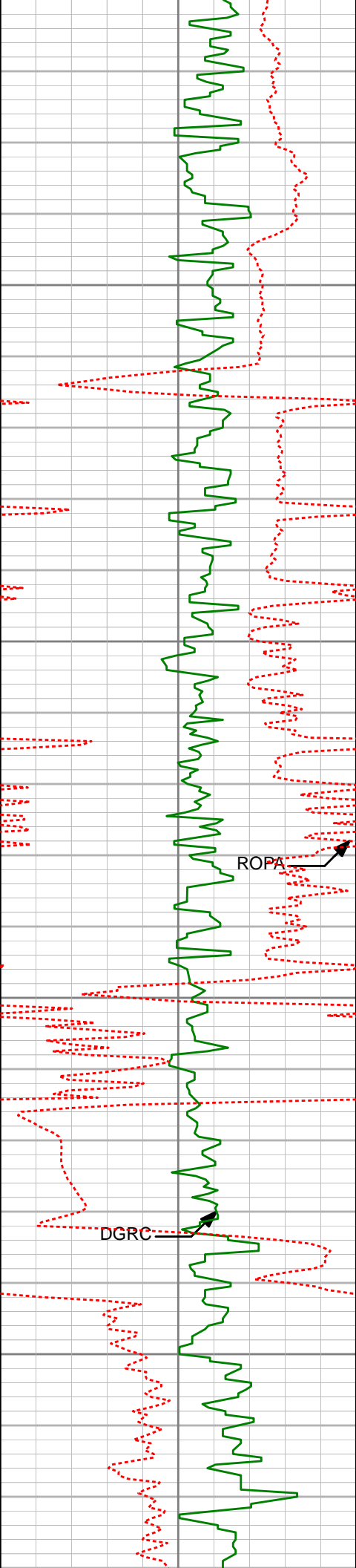


EWXT



C39P





11150

11200

11250

11300

ROPA

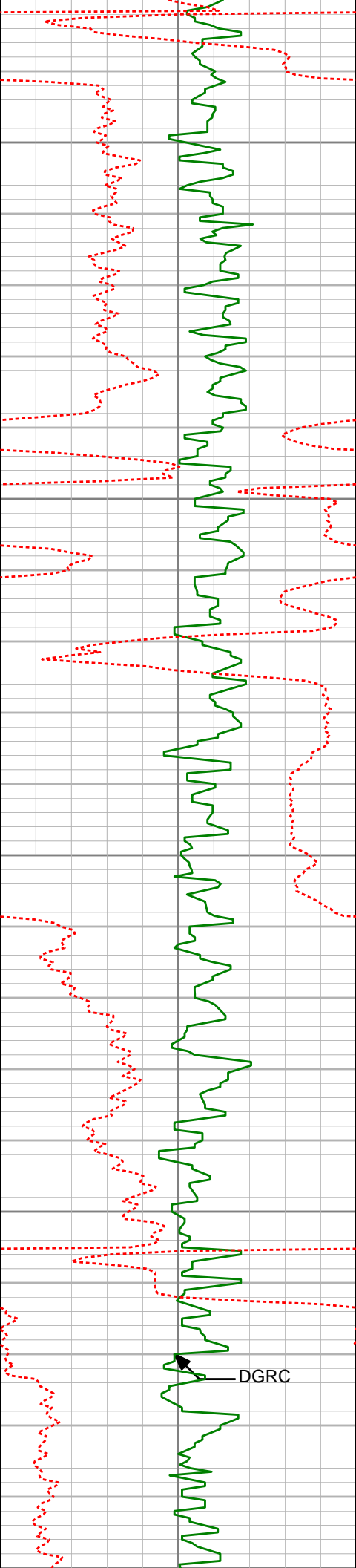
DGRC

R15P

R39P

EWXT

C39P



11350

11400

11450

11500

11550

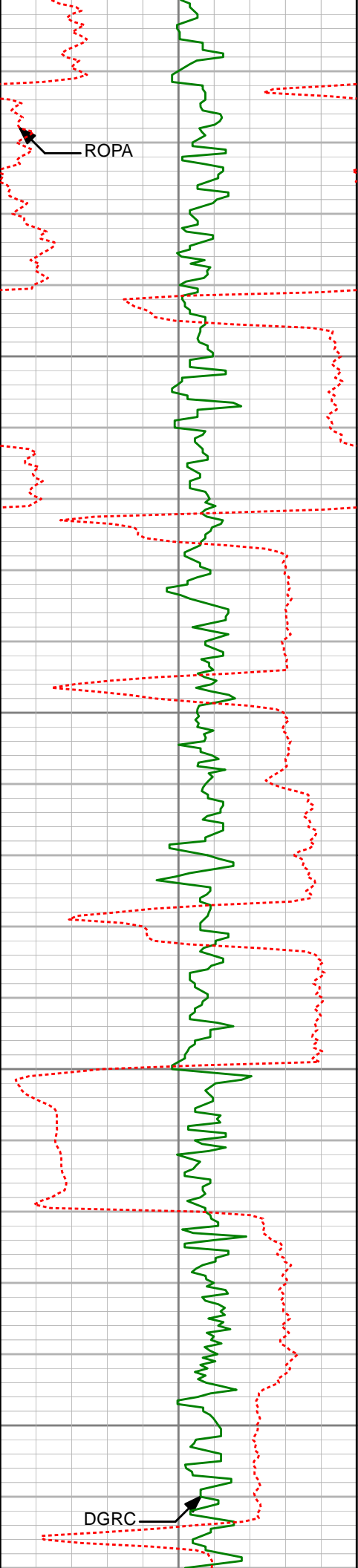
DGRC

R15P

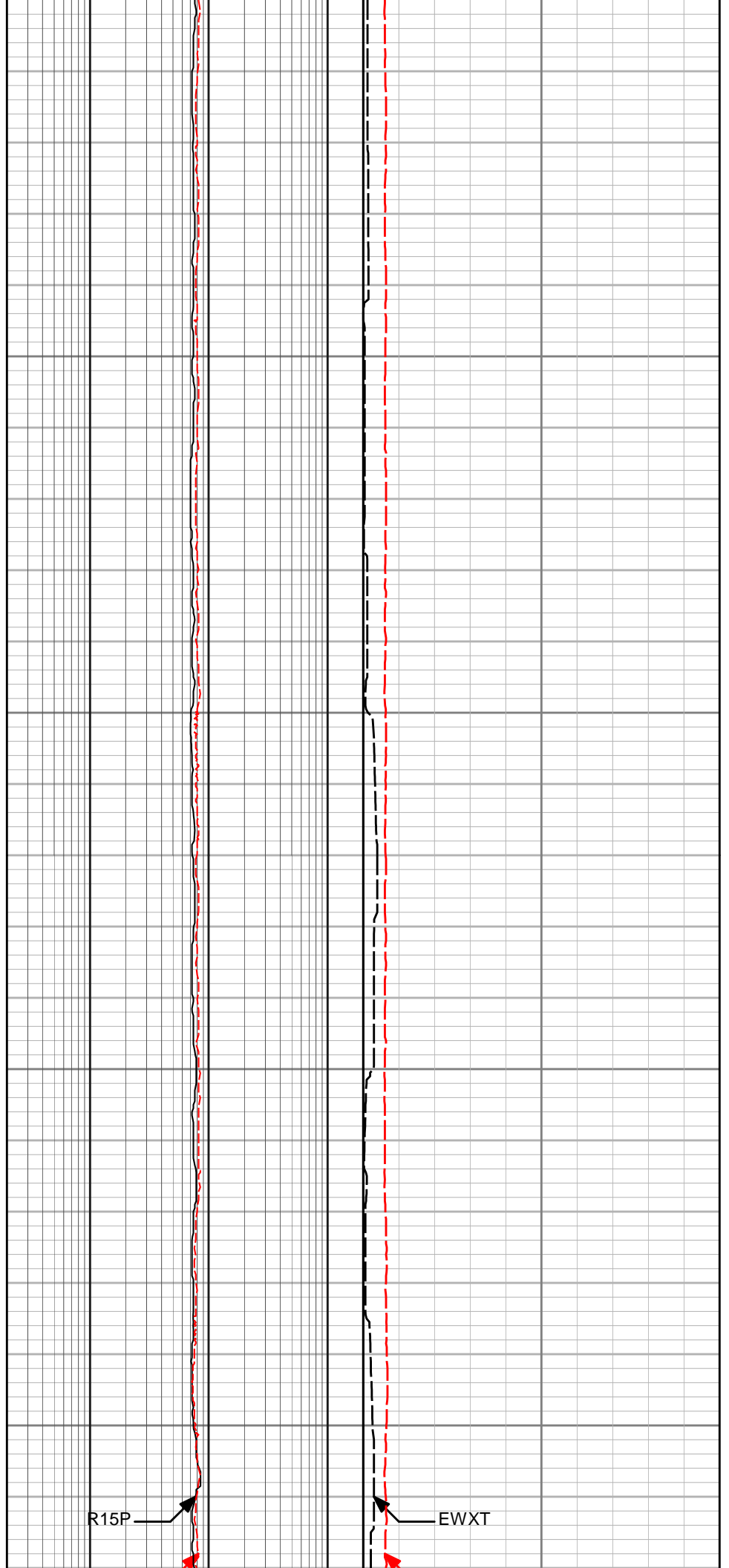
R39P

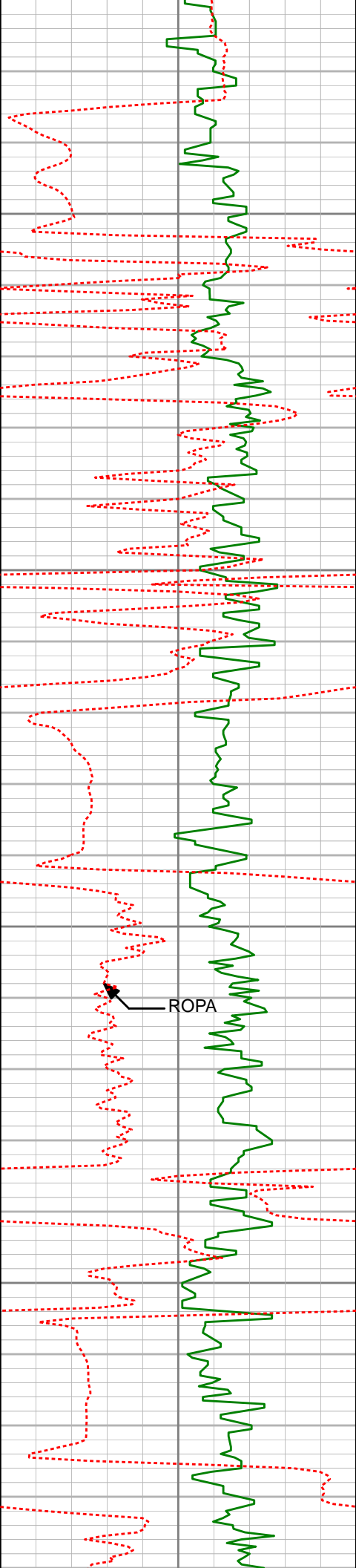
EWXT

C39P



11550
11600
11650
11700
11750





11800

11850

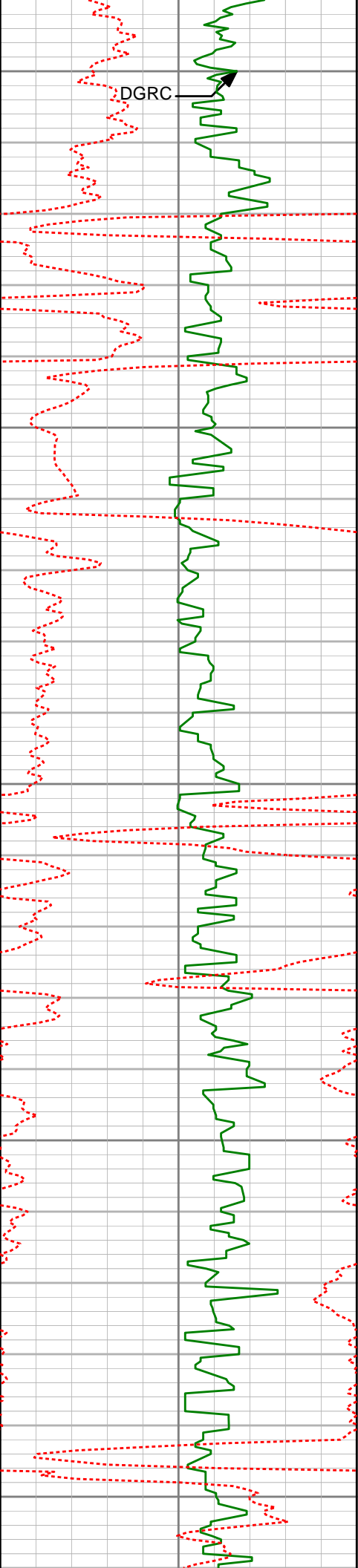
11900

11950

ROPA

R39P

C39P



12000

R15P

R39P

12050

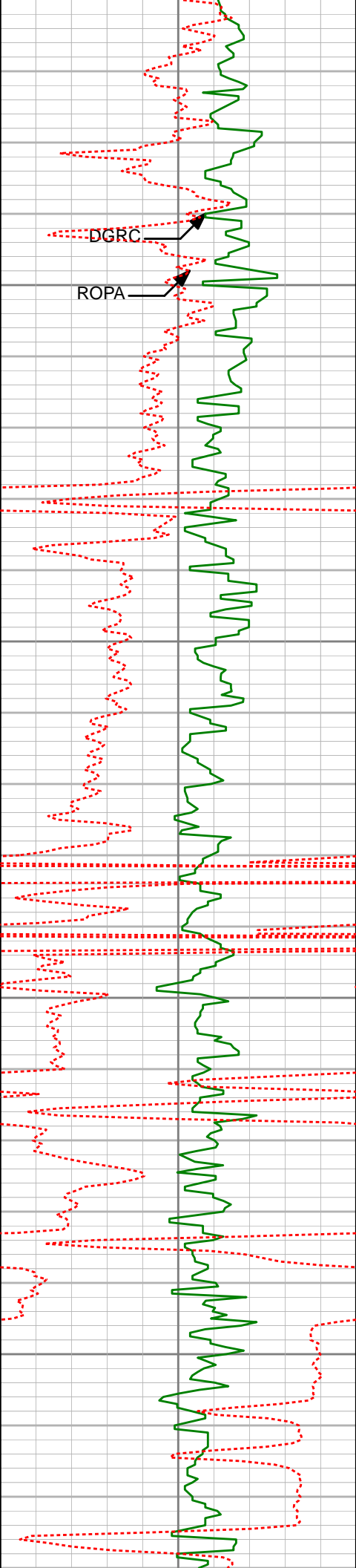
12100

12150

12200

EWXT

C39P

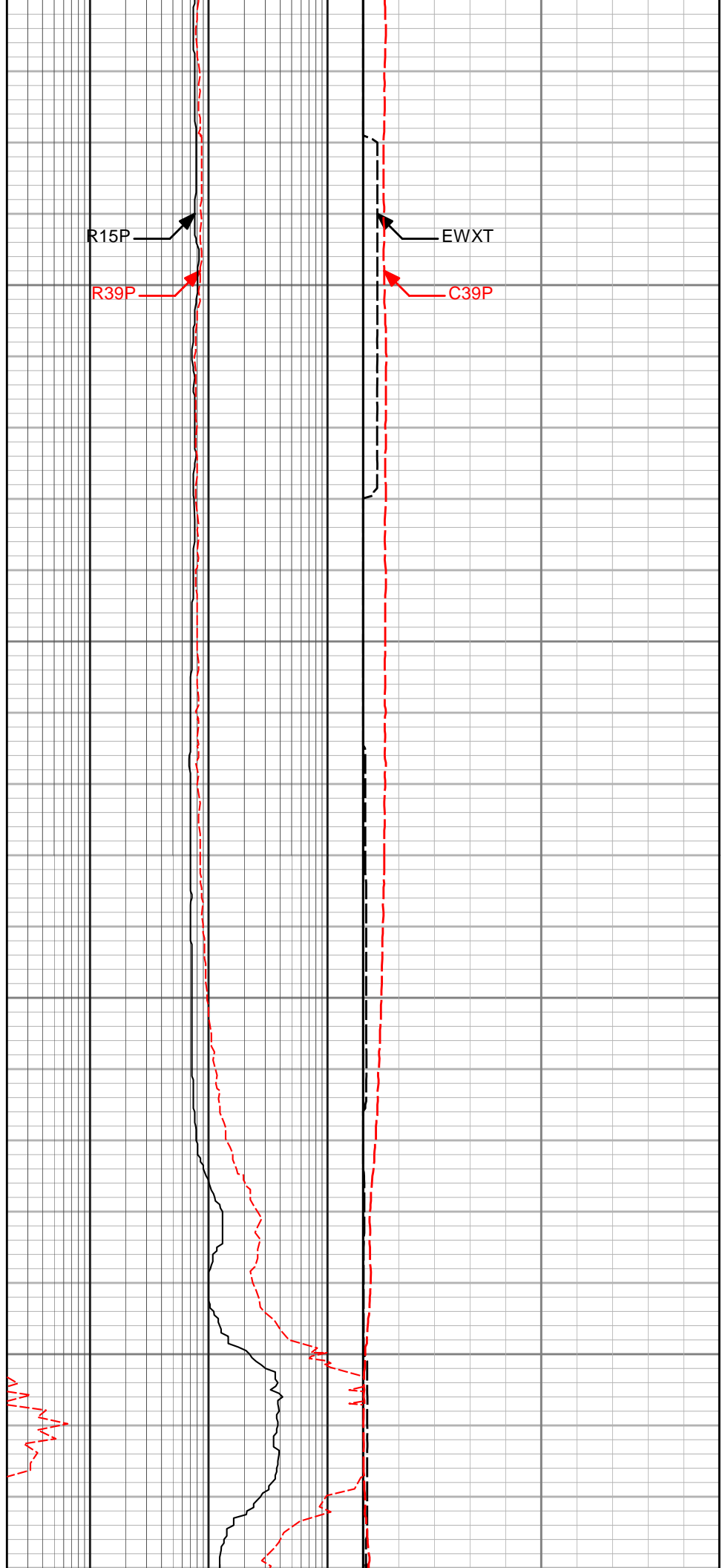


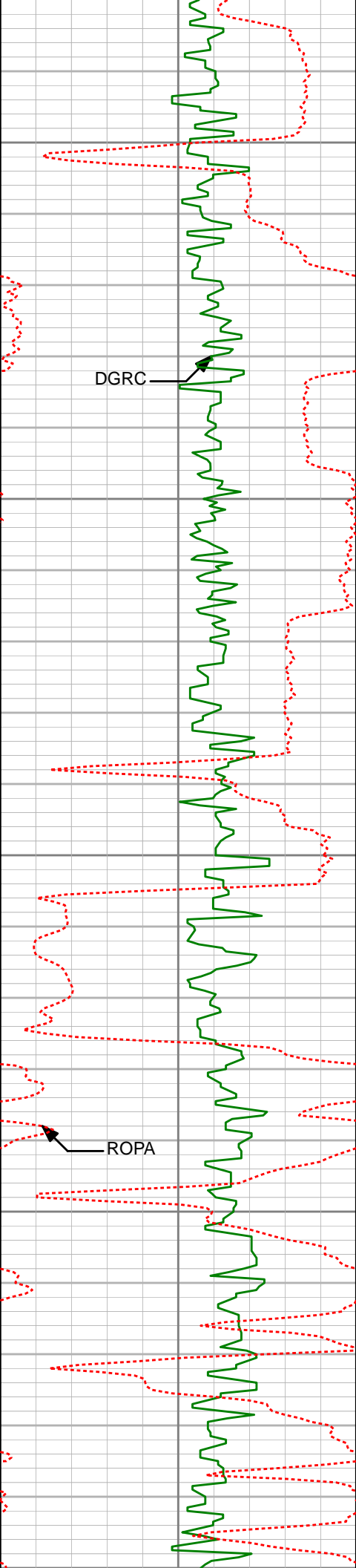
12250

12300

12350

12400





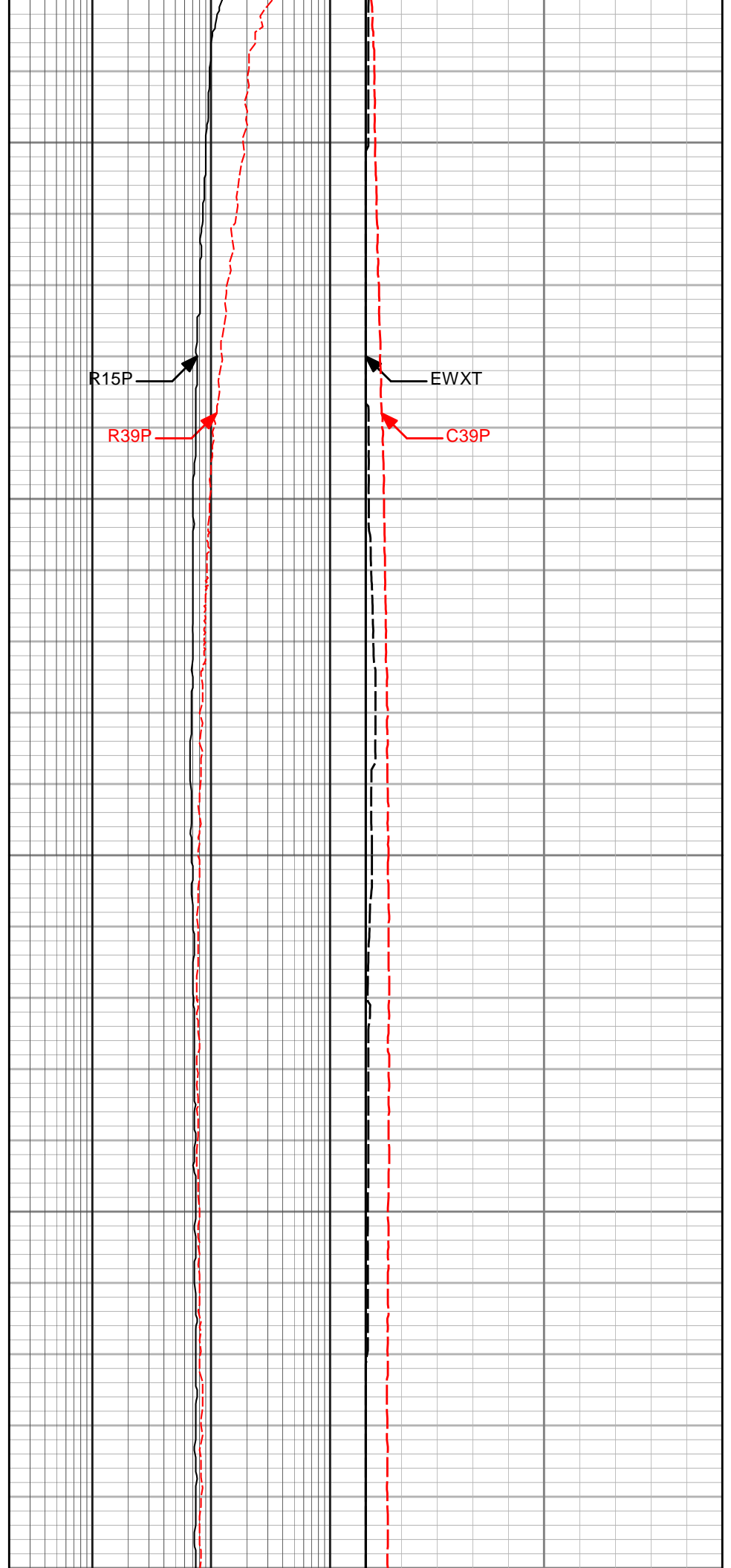
12450

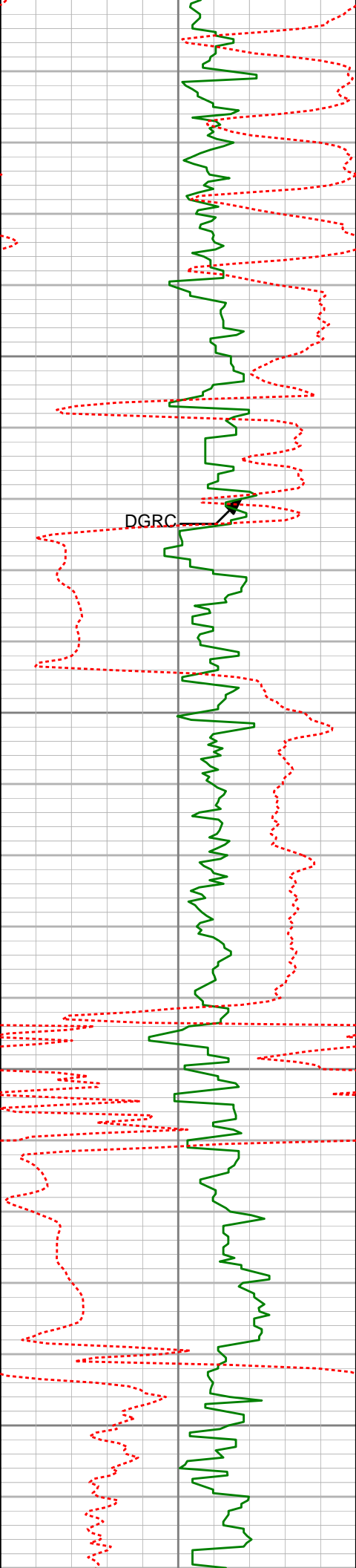
12500

12550

12600

12650





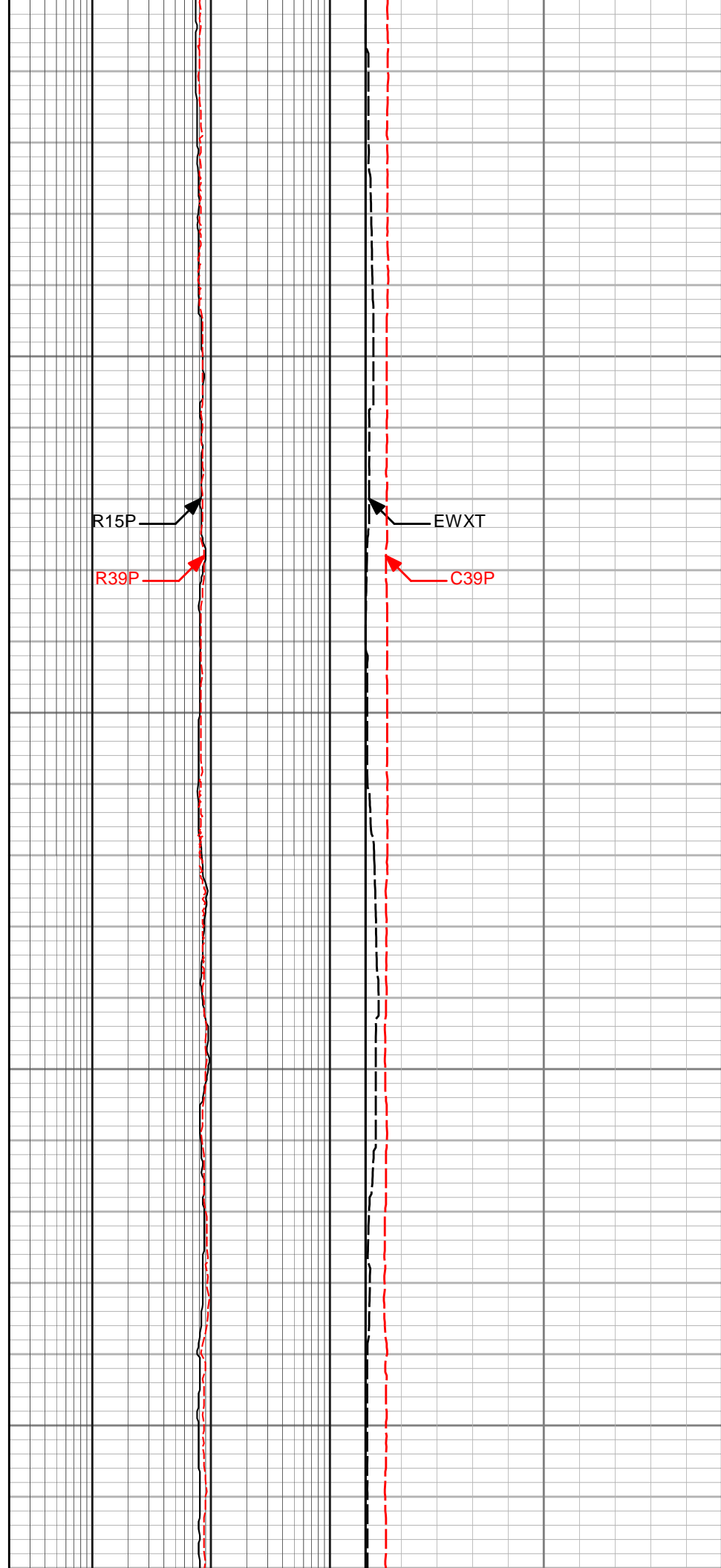
12650

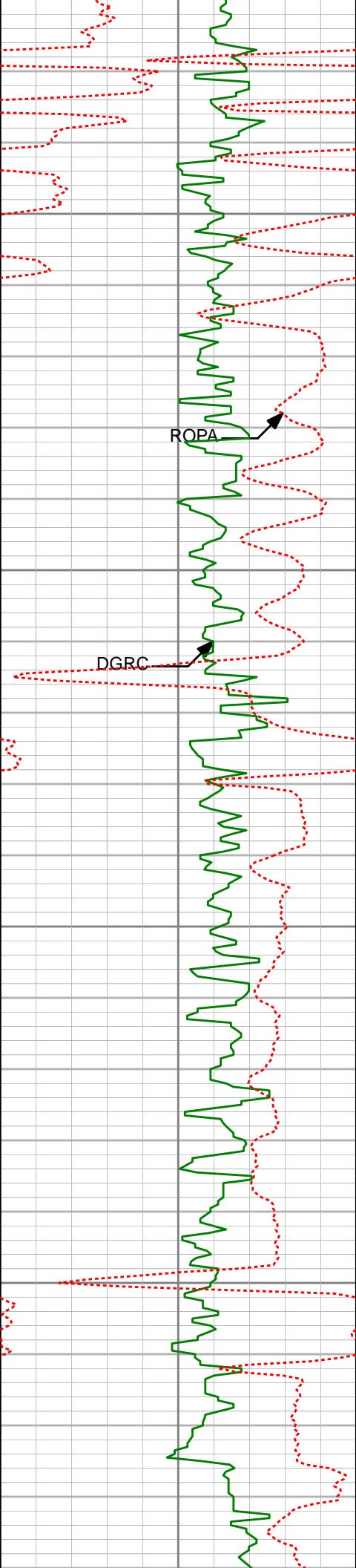
12700

12750

12800

12850





12900

12950

13000

13050

ROPA

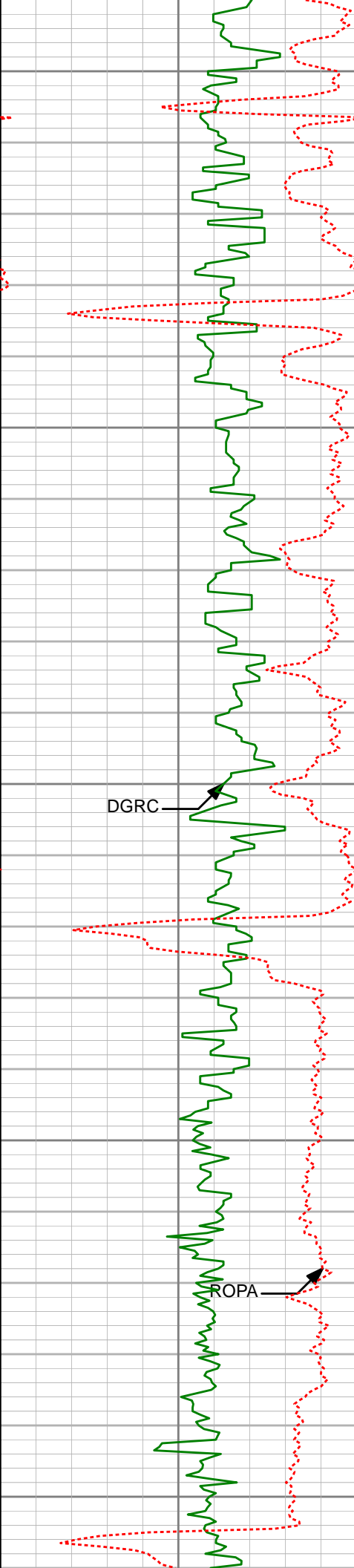
DGRC

R15P

R39P

EWXT

C39P



13100

13150

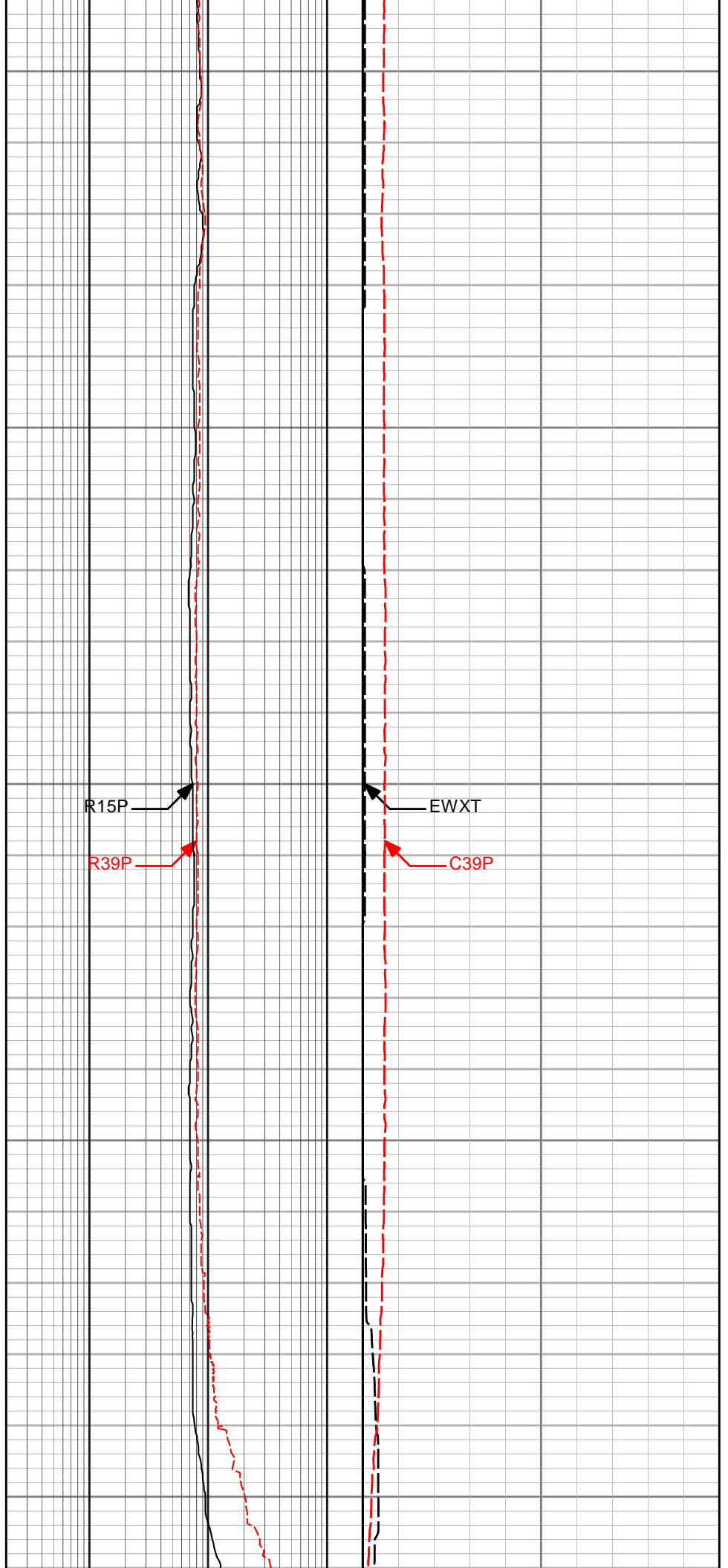
13200

13250

13300

DGRC

ROPA

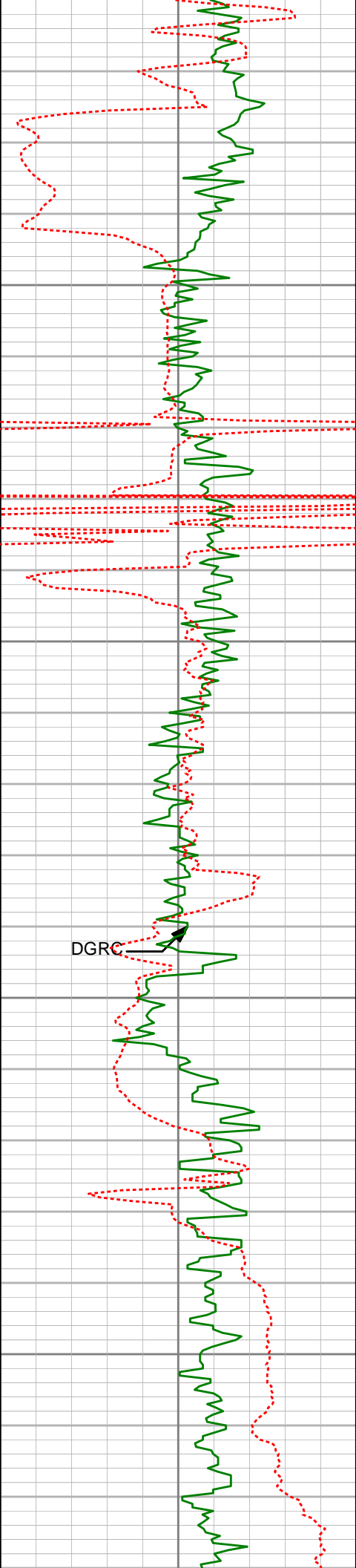


R15P

R39P

EWXT

C39P



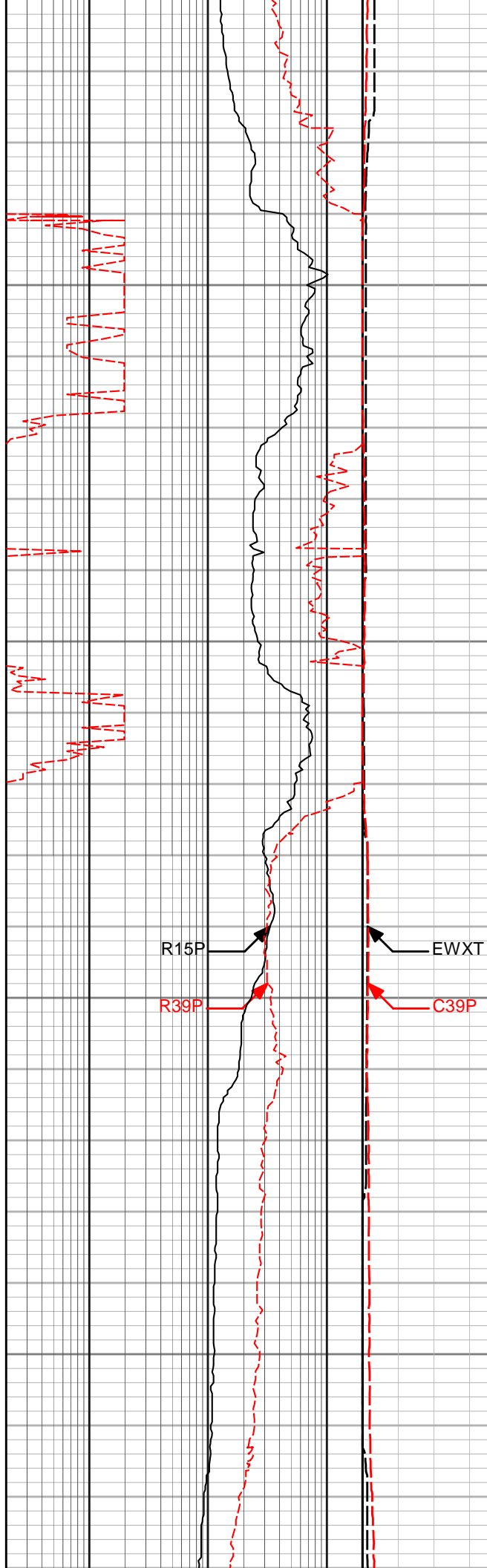
13350

13400

13450

13500

DGRC

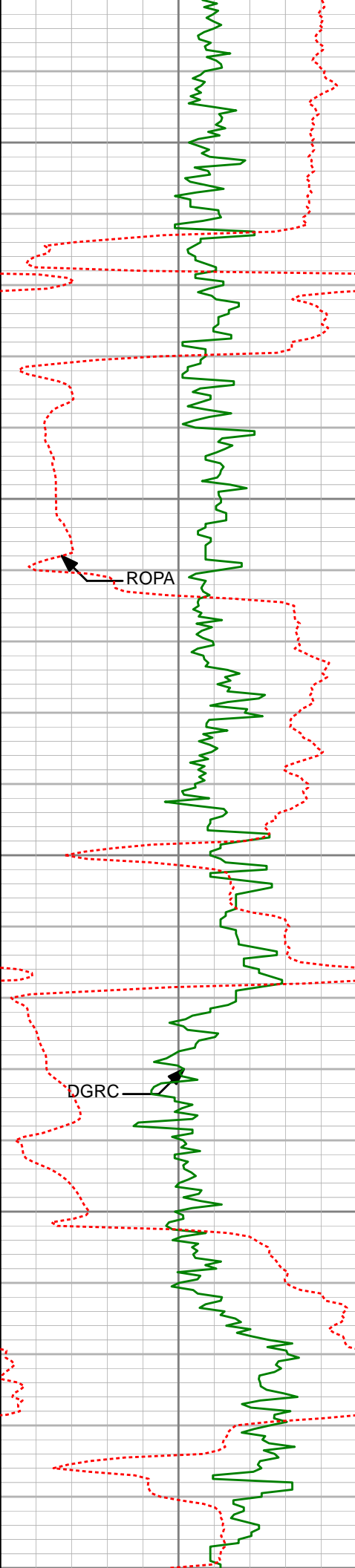


R15P

R39P

EWXT

C39P



13550

13600

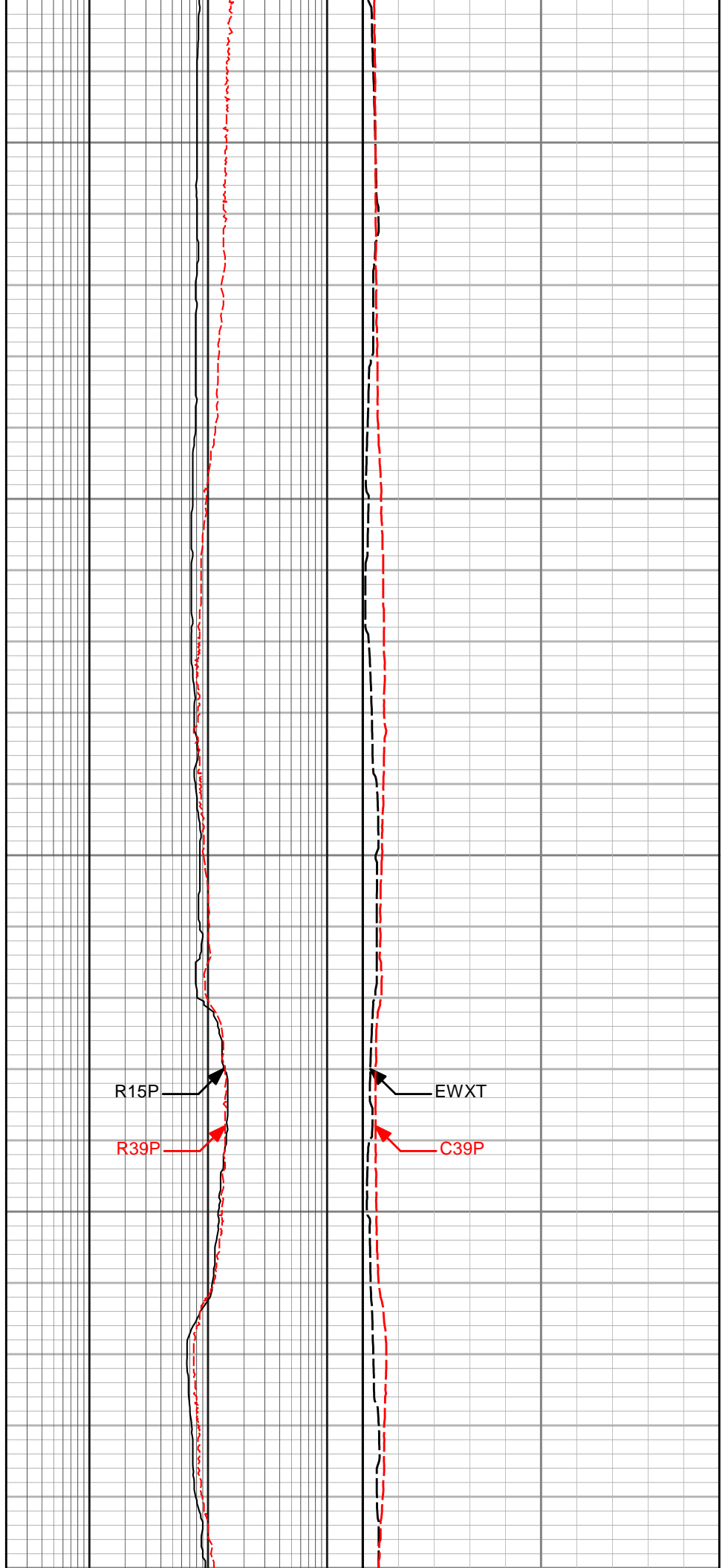
13650

13700

13750

ROPA

DGRC

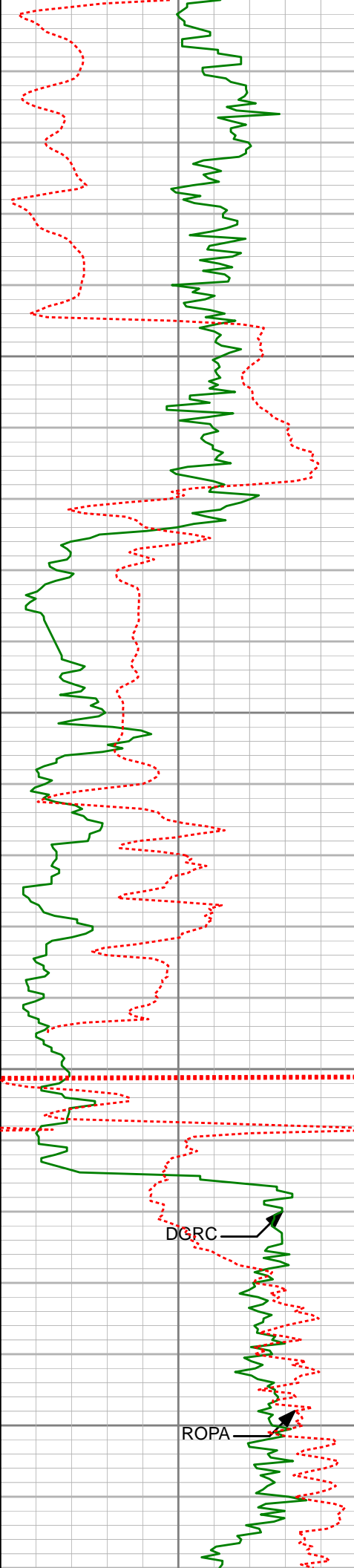


R15P

R39P

EWXT

C39P



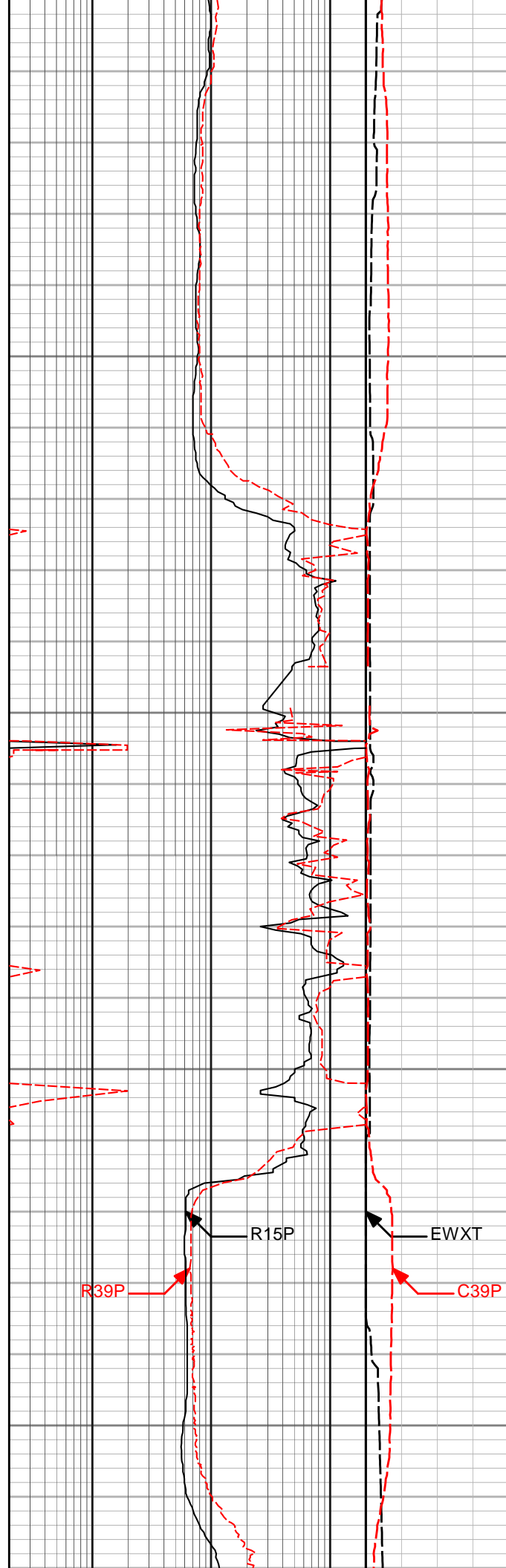
13750

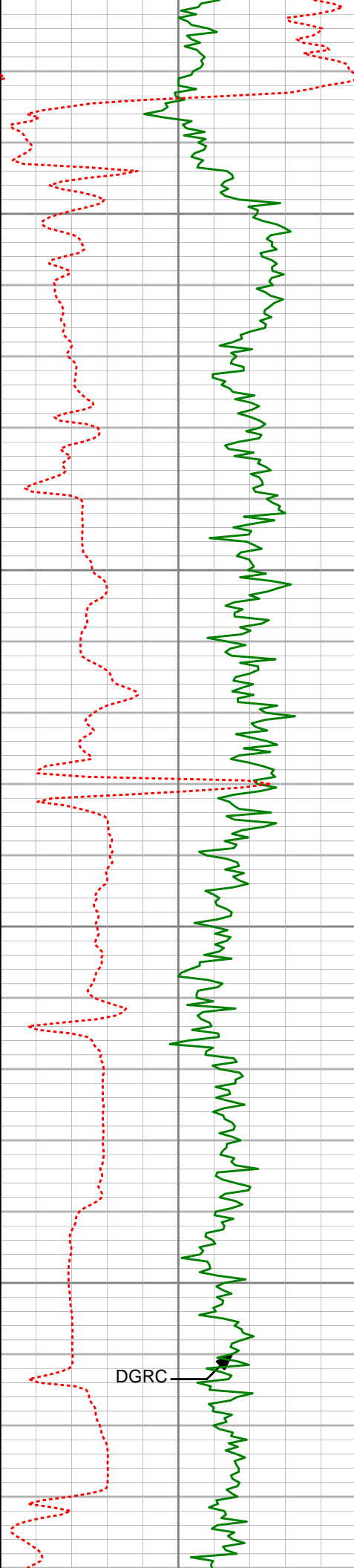
13800

13850

13900

13950





14000

14050

14100

14150

DGRC

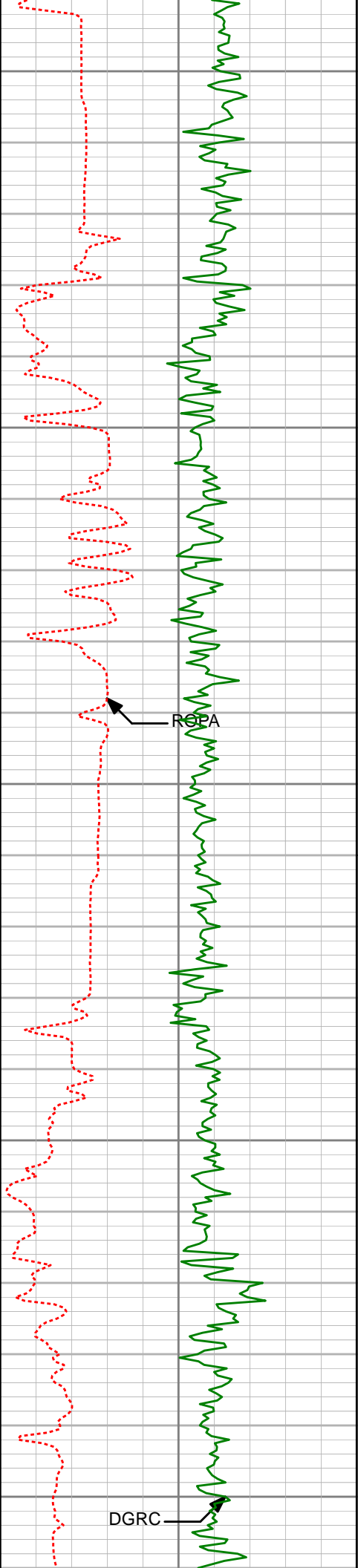


R15P

R39P

EWXT

C39P



14200

14250

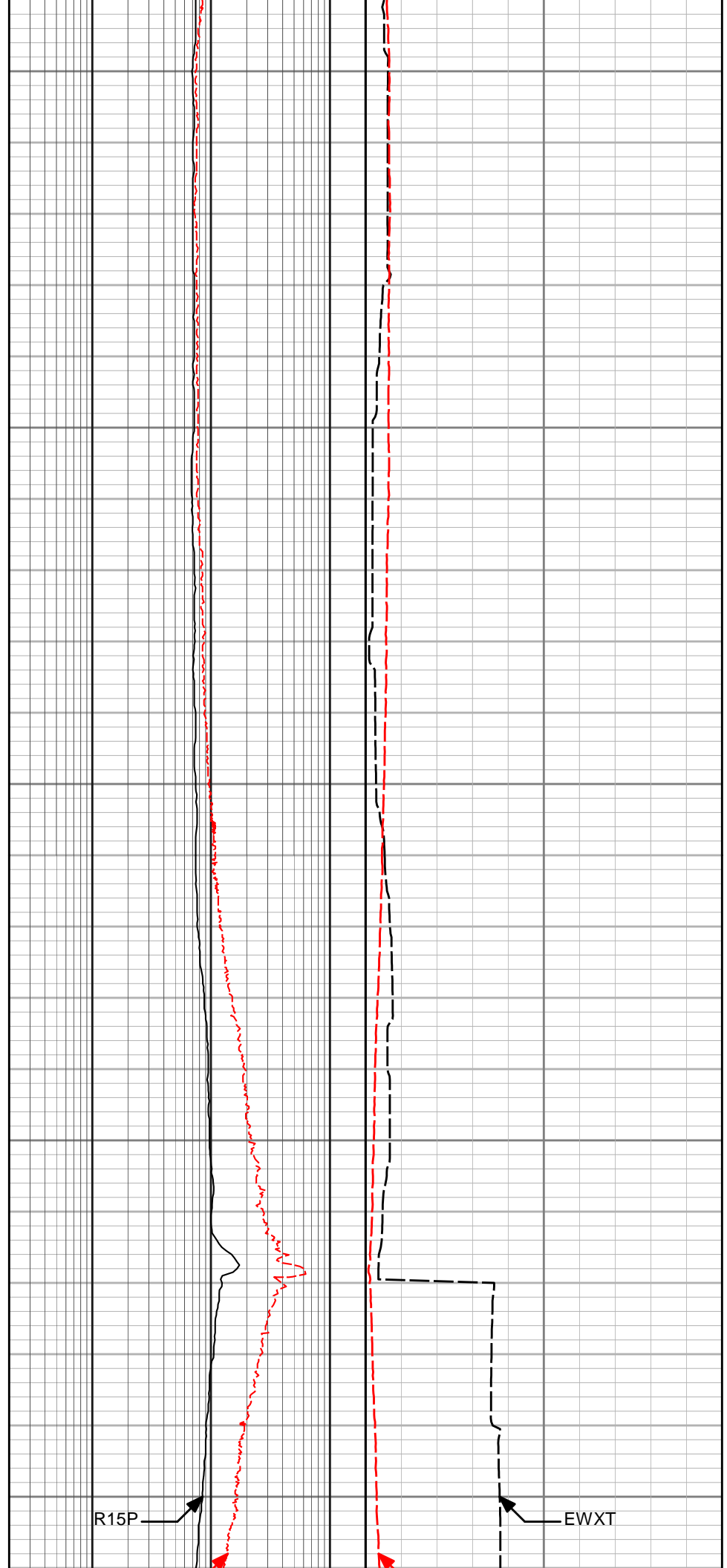
14300

14350

14400

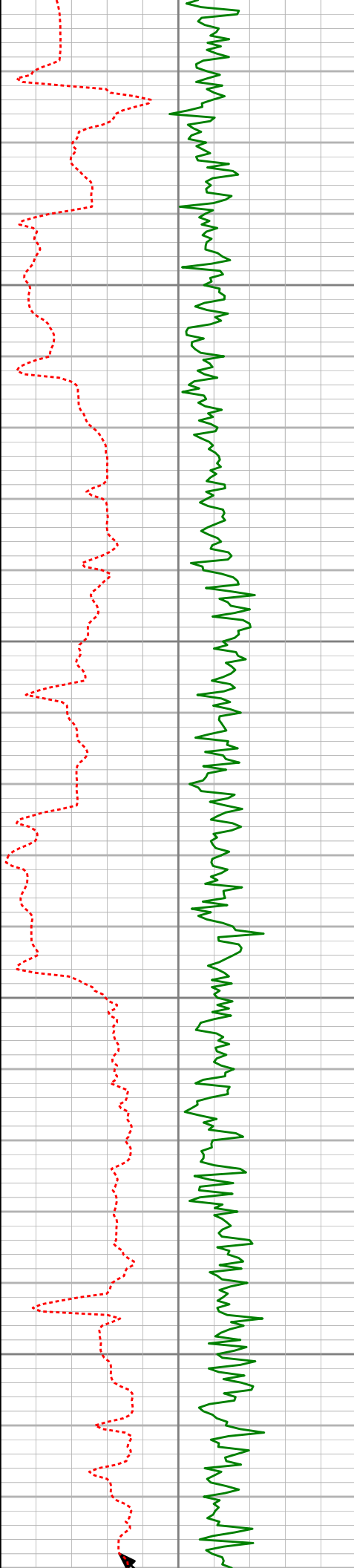
DGRC

R15A



R15P

EWXT



14450

14500

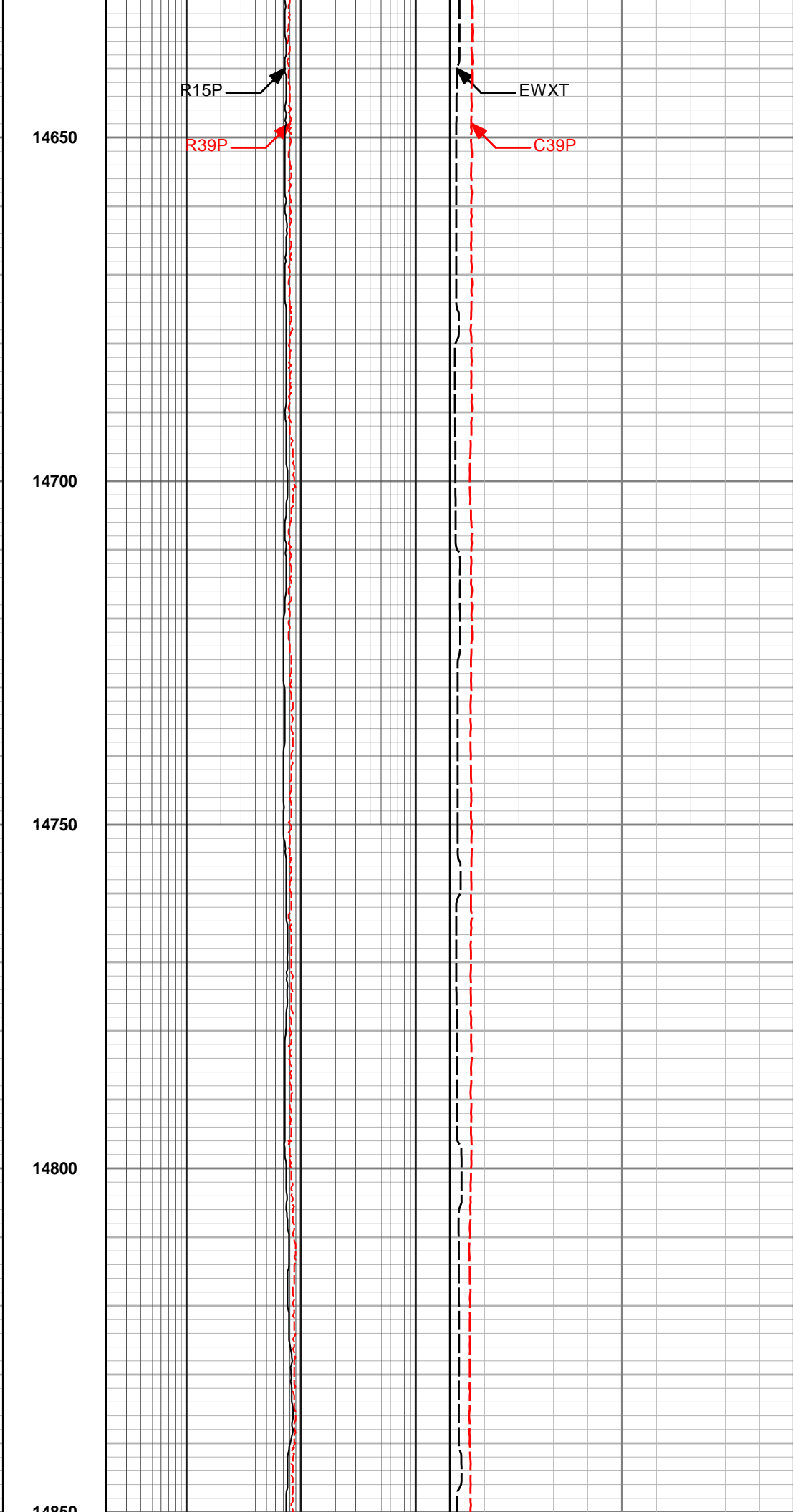
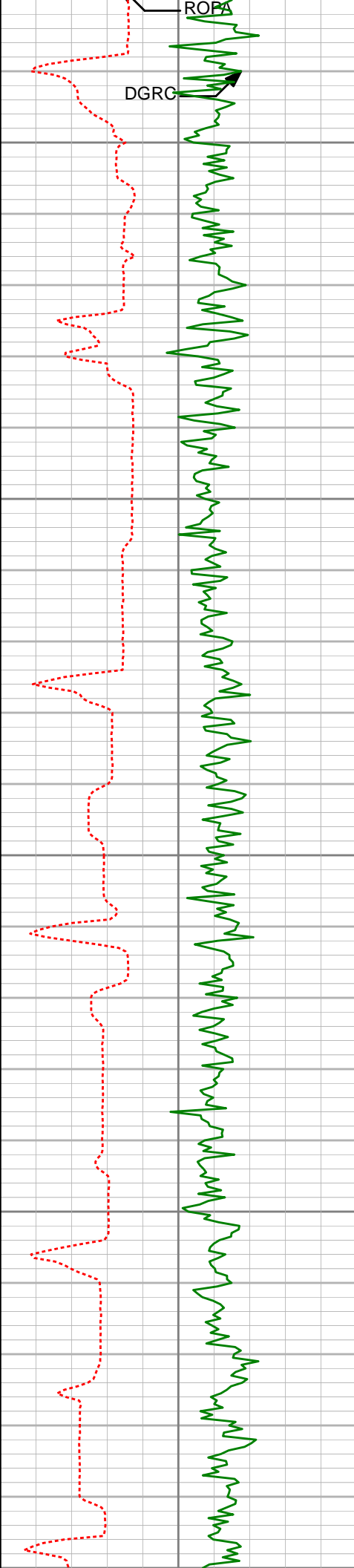
14550

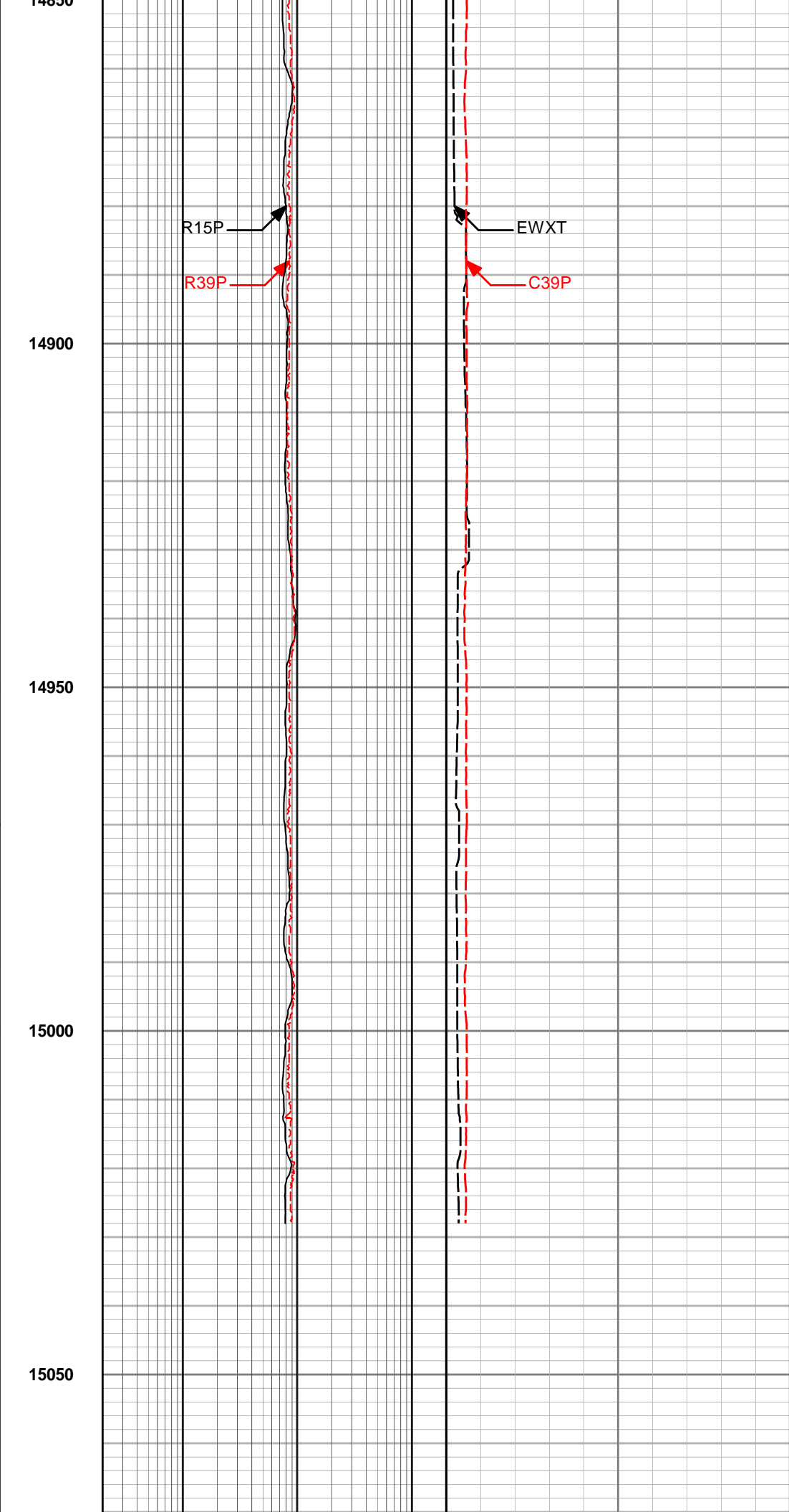
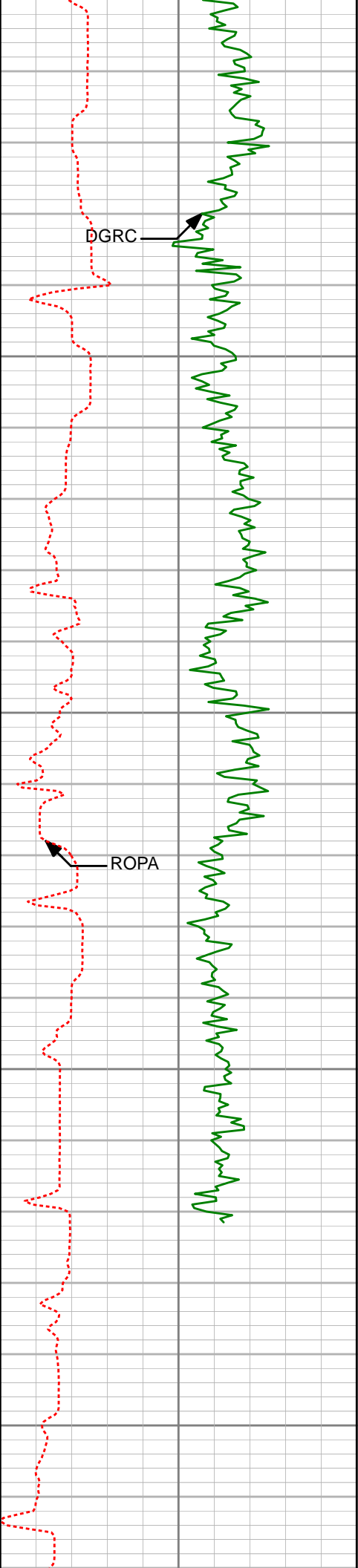
14600



R39P

C39P





Avg Rate of Penetration (ROPA)		Depth	39in Phase Resistivty BC ohm-metre	SP4 Formation Exp Time EWXT
0	500		0.2	200
feet per hr				hours
Dual Gamma Ray DGRC			15in Phase Resistivity BC ohm-metre	39in Phase Conductivity BC mmho per metre
0	150		0.2	2K
api				