



Weatherford®

Surface Logging Systems

Scale 1:240 (5"=100') Imperial
Measured Depth Log

Tooke Rockies, Inc.
(A Weatherford Company)

884 Implement Dr.
Dickinson, ND 58601
701-227-4408

717 West Platte
PO BOX 435
Casper, WY 82601
307-265-2124

Well Name: State North Platte 24-K21-26HNB
Location: SW/SE Sec. 26-T5N-R63W
License Number: API 05-123-38308-00(Build/Lateral)
Spud Date: 11/11/2013
Surface Coordinates: 519' FSL & 2383' FEL

Region: DJ BASIN
Drilling Completed: 11/20/2013

Bottom Hole Coordinates: 470' FNL & 2285' FEL
Ground Elevation (ft): 4550 K.B. Elevation (ft): 4567
Logged Interval (ft): 6000 To: 10830 Total Depth (ft): 10830
Formation: NIOBRARA
Type of Drilling Fluid: WATER BASE

Printed by HORIZONTAL.LOG from WellSight Systems 1-800-447-1534 www.WellSight.com

OPERATOR

Company: Bonanza Creek Energy Inc.
Address: 410 17th Street, Suite 1500
Denver, CO 80202

GEOLOGIST

Name: Gabriel Genitempo, Douglas Bower
Company: WEATHERFORD SLS/TOOKE ROCKIES
Address: PO BOX 435
CASPER, WY 82602
307.265.2124

Supervision

Company men: Joe Savage, John Bradley
Geologist: Paul McKay

Other Information

ROCK TYPES

	Anhy		Coal		Lmst		Shcol		Chlk
	Bent		Congl		Meta		Shgy		
	Brec		Dol		Mrlst		Sltst		
	Cht		Gyp		Salt		Ss		
	Clyst		Igne		Shale		Till		

ACCESSORIES

FOSSIL

	Algae
	Amph
	Belm
	Bioclst
	Brach
	Bryozoa
	Cephal
	Coral
	Crin
	Echin
	Fish
	Foram
	Fossil
	Gastro
	Oolite

	Ostra
	Pelec
	Pellet
	Pisolite
	Plant
	Strom

MINERAL

	Anhy
	Arggrn
	Arg
	Bent
	Bit
	Brecfrag
	Calc
	Carb

	Chtdk
	Chtlt
	Dol
	Feldspar
	Ferrpel
	Ferr
	Glau
	Gyp
	Hvymin
	Kaol
	Marl
	Minxl
	Nodule
	Phos
	Pyr
	Salt

	Sandy
	Silt
	Sil
	Sulphur
	Tuff

STRINGER

	Anhy
	Arg
	Bent
	Coal
	Dol
	Gyp
	Ls
	Mrst
	Sltstrg

	Ssstrg
--	--------

TEXTURE

	Boundst
	Chalky
	Cryxln
	Earthy
	Finexln
	Grainst
	Lithogr
	Microxln
	Mudst
	Packst
	Wackest

OTHER SYMBOLS

INTERVALS

	Core
	Dst

EVENTS

	Rft
	Sidewall

OIL SHOWS

	Even
	Spotted
	Ques
	Dead

POROSITY TYPE

	Earthy
	Fenest
	Fracture
	Inter
	Moldic
	Organic

	Pinpoint
	Vuggy

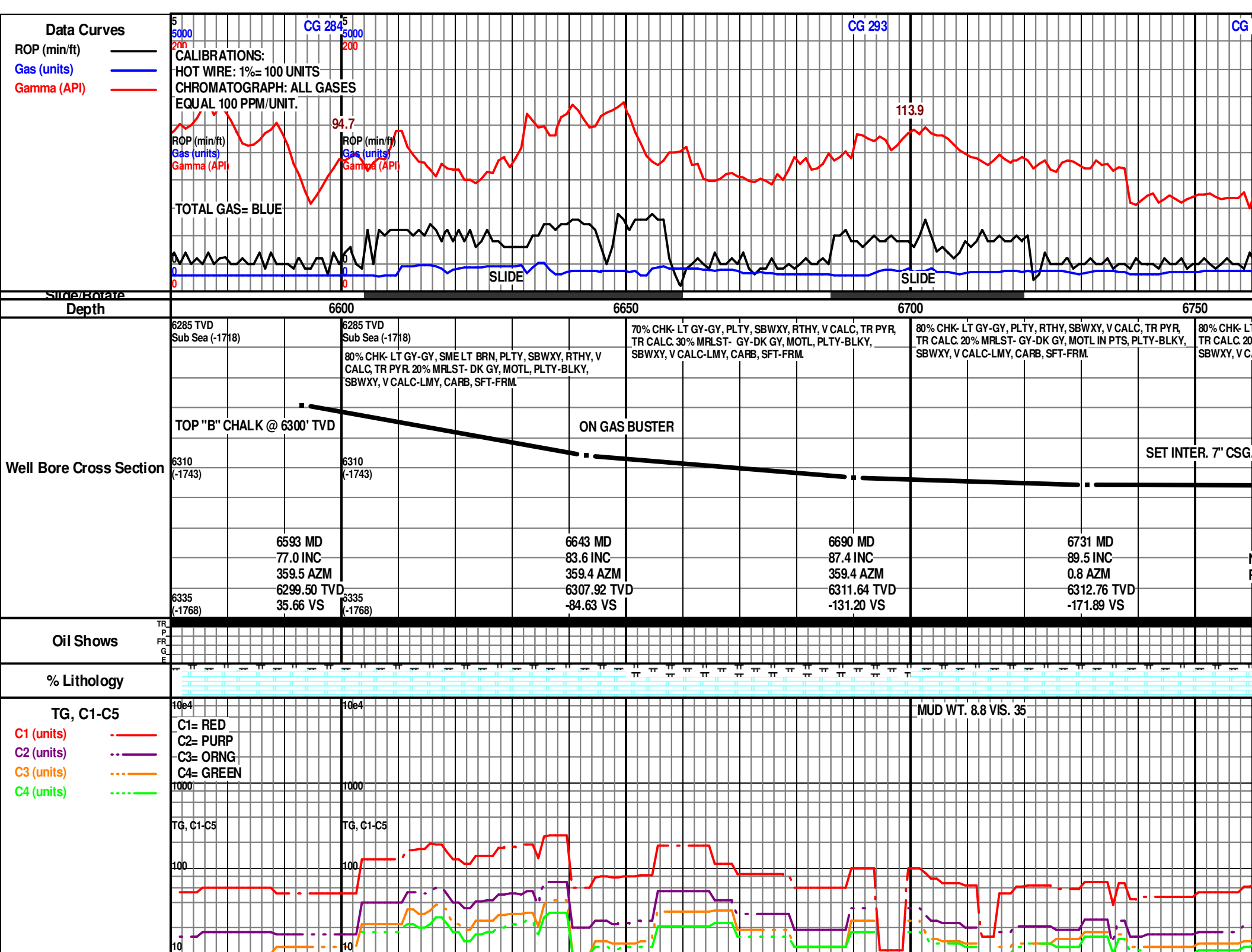
ROUNDING

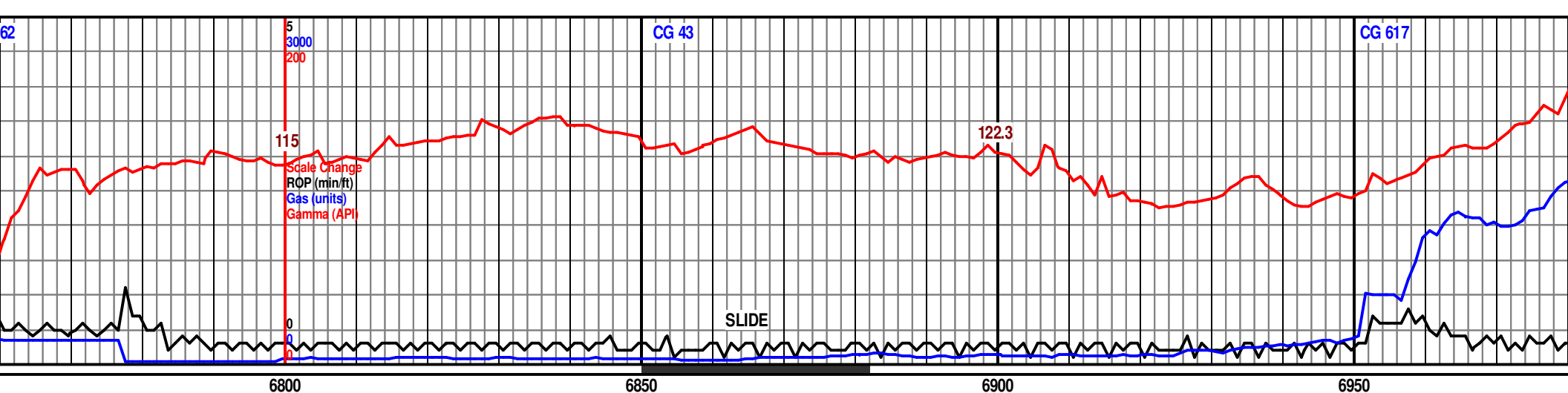
	Rounded
	Subrnd
	Subang

	Angular
--	---------

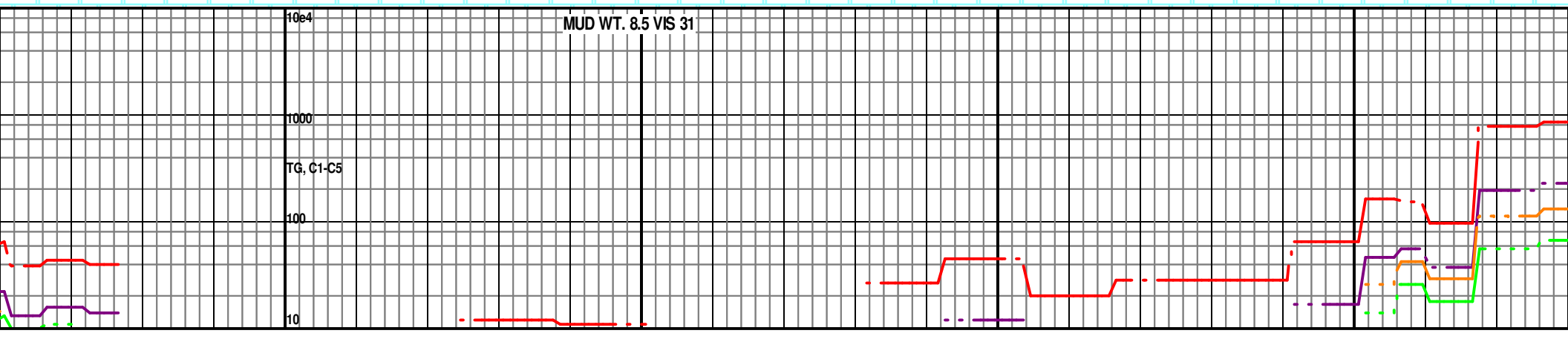
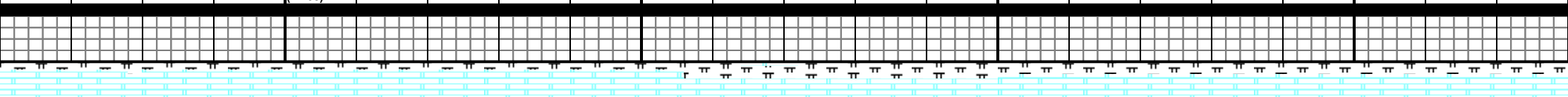
SORTING

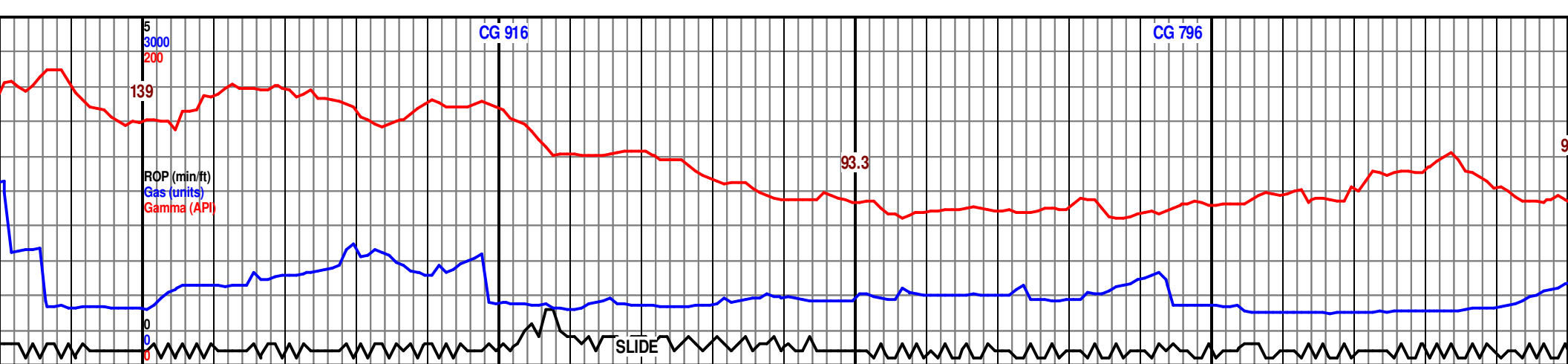
	Well
	Moderate
	Poor



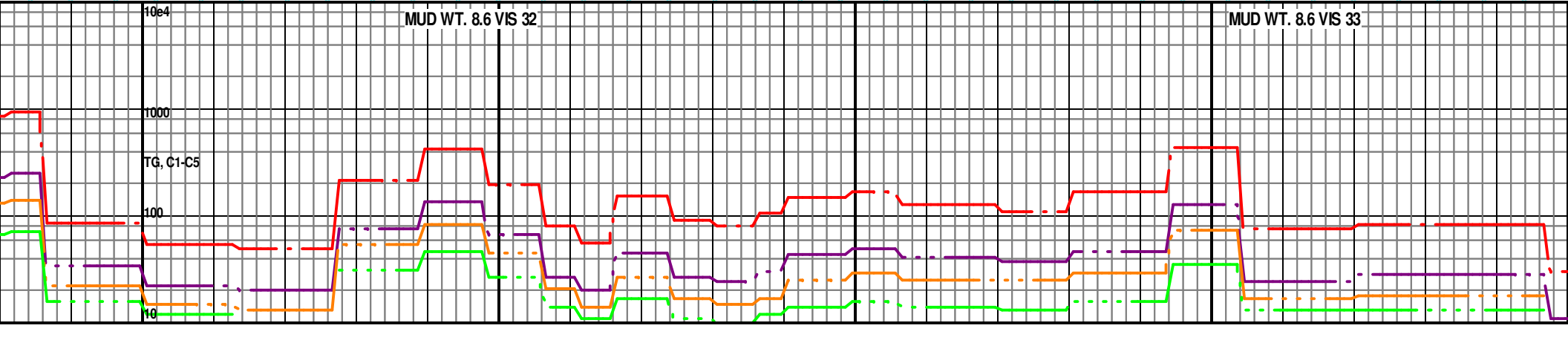
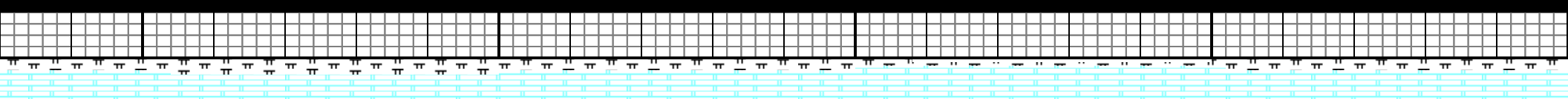


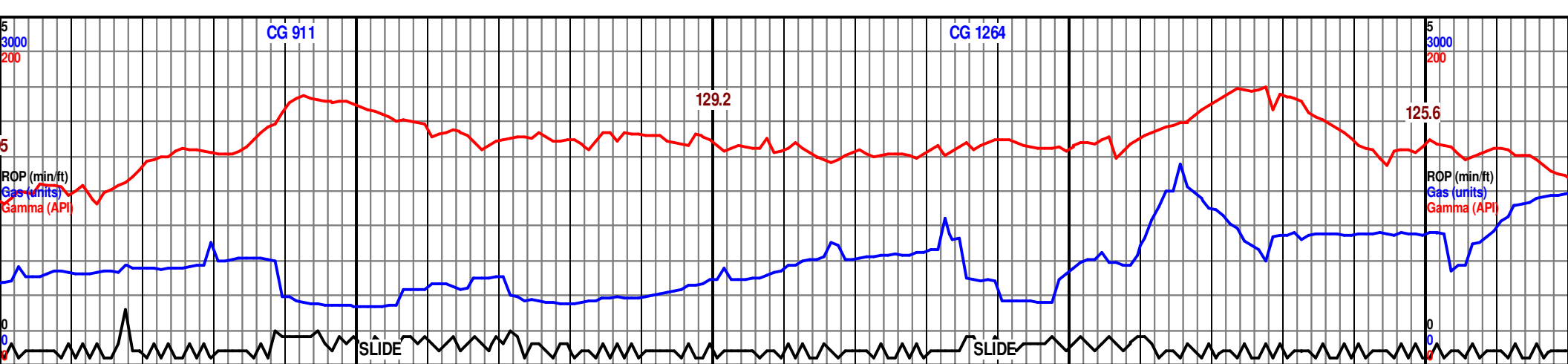
6800	6850	6900	6950
GY-GY, PLTY, RTHY, SBWXY, V CALC, TR PYR, % MRLST- GY-DK GY, MOTL IN PTS, PLTY-BLKY, CALC-LMY, CARB, SFT-FRM.	6285 TVD Sub Sea (-1718) 80% CHK- LT GY-GY, PLTY, RTHY, SBWXY, V CALC, MOD SFT, TR CALC 20% MRLST- MED GY-DK GY, MOTL, PLTY-BLKY, V CALC-LMY, CARB, SFT-FRM.	60% CHK- LT GY-GY, PLTY, RTHY, V CALC, SFT, SCT CALC. 40% MRLST- PRED DK GRY, TR MOTL, PLTY-BLKY, V CALC-LMY, CARB, SFT-FRM.	70% CHK- LT GY-GY, PLTY, RTHY, V CALC, SFT, SCT CALC. 30% MRLST- PRED DK GRY, TR MOTL, PLTY-BLKY, V CALC-LMY, CARB, SFT-FRM.
TD CURVE 6777' MD 11/14/2013 2106 HRS TRIP TO RUN 7" CASING			
LTC 26# AT 6767	ON GAS BUSTER		
Mud Motor is 1.25° Gamma 47.58' BEHIND BIT. SURVEY 50.96' BEHIND BIT.	6310 (-1743)	6897 MD 91.1 INC 1.7 AZM 6313.02 TVD -242.19 VS	6897 MD 91.1 INC 0.3 AZM 6312.08 TVD -336.31 VS
NEW BIT # 4, Varel 4006265, 6.125", PDC, JETS 5 x 22, IN AT 6777'	6335 (-1768)		



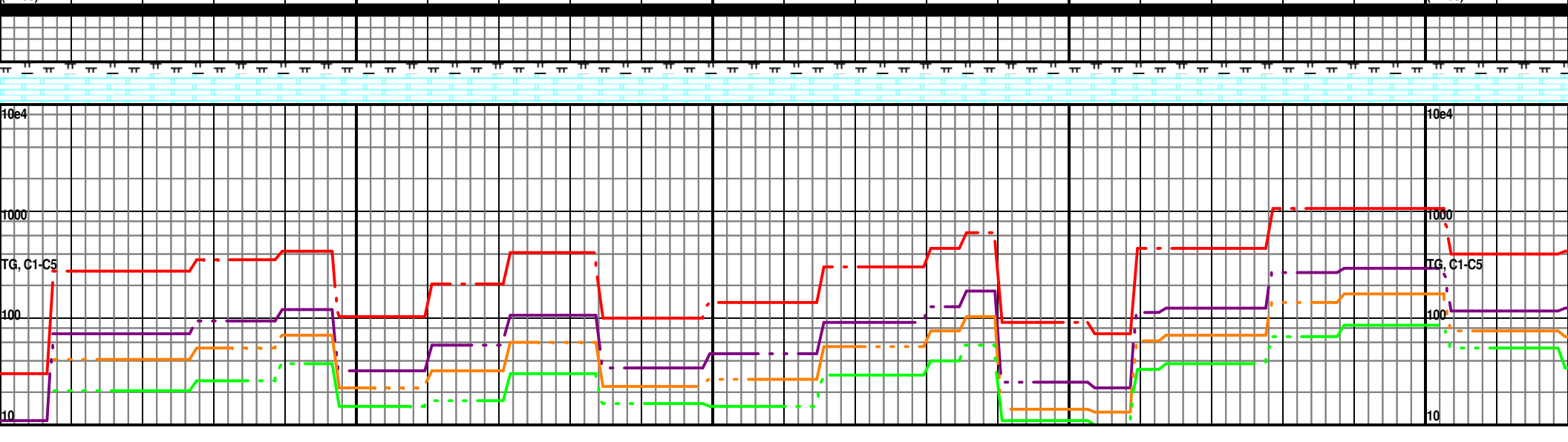


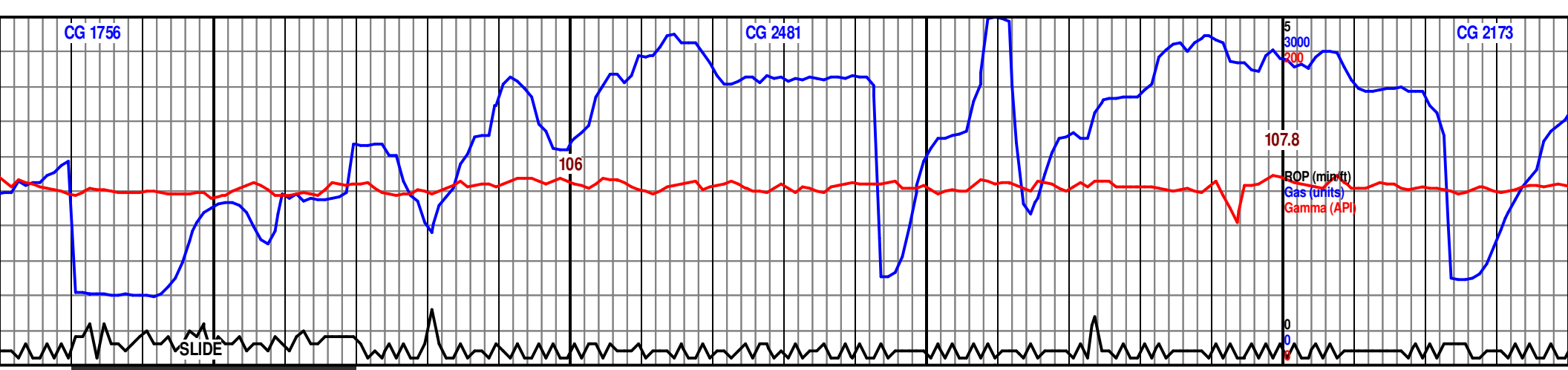
CALC, SFT- FRM, CALC, PLTY-BLKY, V		6285 TVD Sub Sea (-1718)		70% CHK- LT GY-GY, BLKY, RTHY, V CALC, SFT- FRM, CALC. 30% MRLST- PRED DK GRY, TR MOTL, PLTY-BLKY, V CALC-LMY, CARB, SFT- FRM, TR STN.		80% CHK- LT GY-GY, SM GY BRN, BLKY, RTHY, V CALC, SFT- FRM, CALC. 20% MRLST- DK GY- GY, TR MOTL, PLTY-BLKY, V CALC- LMY, CARB, SFT- FRM, TR STN.		70% CHK- LTGY- LT BRN, SFT-FRM, TR CALC, RTHY, V CALC. 30% MRLST- DK GY- GY, MOTL, BLKY- PLTY, SBWXY, V CALC- LMY, CARB, SFT-FRM, SPTY FLOR, RESID CUT.	
		60% CHK- LT GY-GY, BLKY, RTHY, V CALC, SFT- FRM, CALC. 40% MRLST- PRED DK GRY, TR MOTL, PLTY- BLKY, V CALC-LMY, CARB, SFT- FRM,TR STN.							
		ON GAS BUSTER							
		6310 (-1743)							
6993 MD 91.1 INC 358.2 AZM 6310.29 TVD -431.75 VS		3335 (-1768)		7089 MD 90.0 INC 3.9 AZM 6309.41 TVD -526.80 VS				7184 MD 91.0 INC 3.8 AZM 6308.63 TVD -620.17 VS	



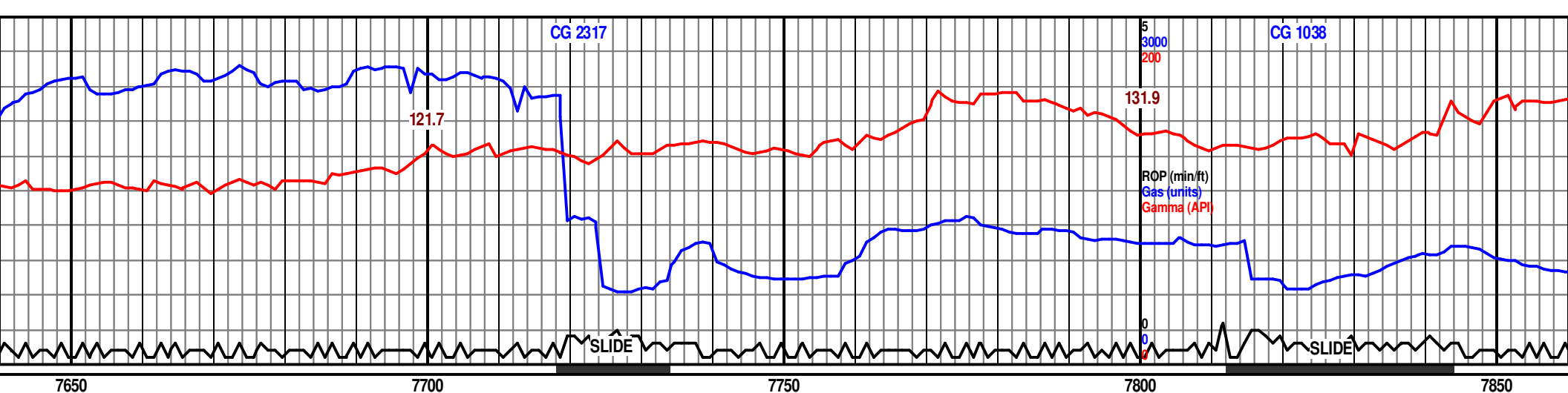


6285 TVD Sub Sea (-17)18				70% CHK- LTGY- LT BRN, SFT-FRM, RTHY, V CALC, TR CALC. 30% MRLST- DK GY- GY, MOTL, BLKY- PLTY, SBWXY, V CALC- LMY, CARB, SFT-FRM, TR STN.				70% CHK- LTGY- LT BRN, SFT-FRM, RTHY, V CALC, TR CALC. 30% MRLST- DK GY- GY, GY BRN, SM MOTL, BLKY- PLTY, SBWXY, V CALC- LMY, CARB, SFT-FRM, TR STN.				70% CHK- LTGY- LT BRN, SFT-FRM, RTHY, V CALC, TR CALC. 30% MRLST- DK GY- GY, GY BRN, SM MOTL, BLKY- PLTY, SBWXY, V CALC- LMY, CARB, SFT-FRM, TR STN.				6285 TVD Sub Sea (-17)18			
70% CHK- LTGY- LT BRN, SFT-FRM, RTHY, V CALC, TR CALC. 30% MRLST- DK GY- GY, MOTL, BLKY- PLTY, SBWXY, V CALC- LMY, CARB, SFT-FRM, SPTY FLOR, RESID CUT.																70% CHK- LTGY- LT BRN, 30% MRLST- DK GY- GY, SBWXY, V CALC- LMY, CA CUT.			
				ON GAS BUSTER															
6310 (-1743)																6310 (-1743)			
				7280 MD 89.6 INC 3.4 AZM 6308.17 TVD -714.60 VS								7376 MD 88.4 INC 4.6 AZM 6309.91 TVD -808.89 VS							
6335 (-1768)																6335 (-1768)			

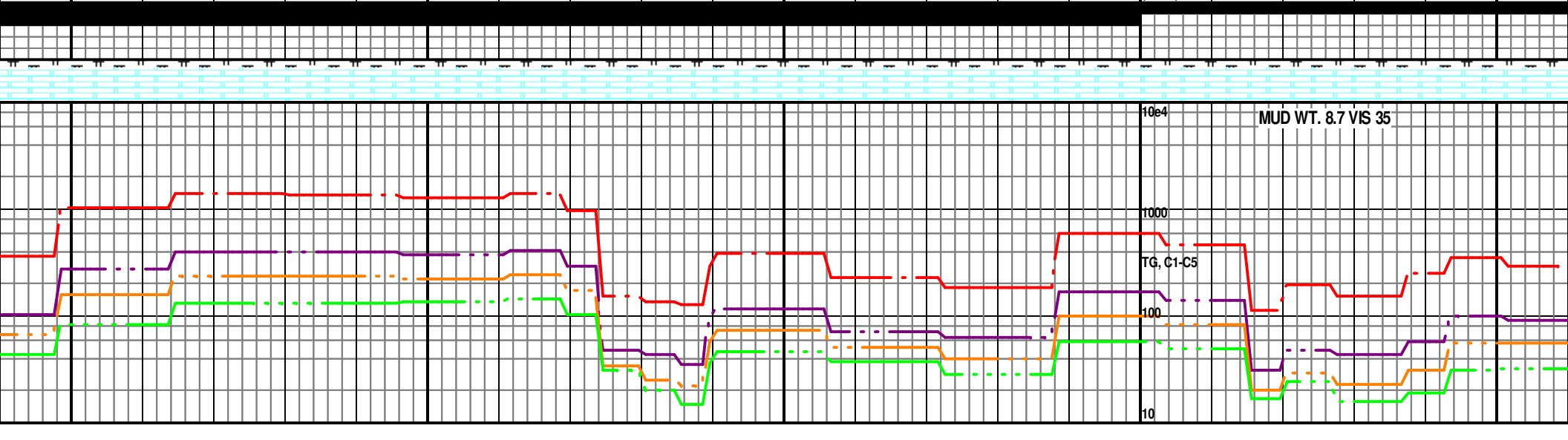


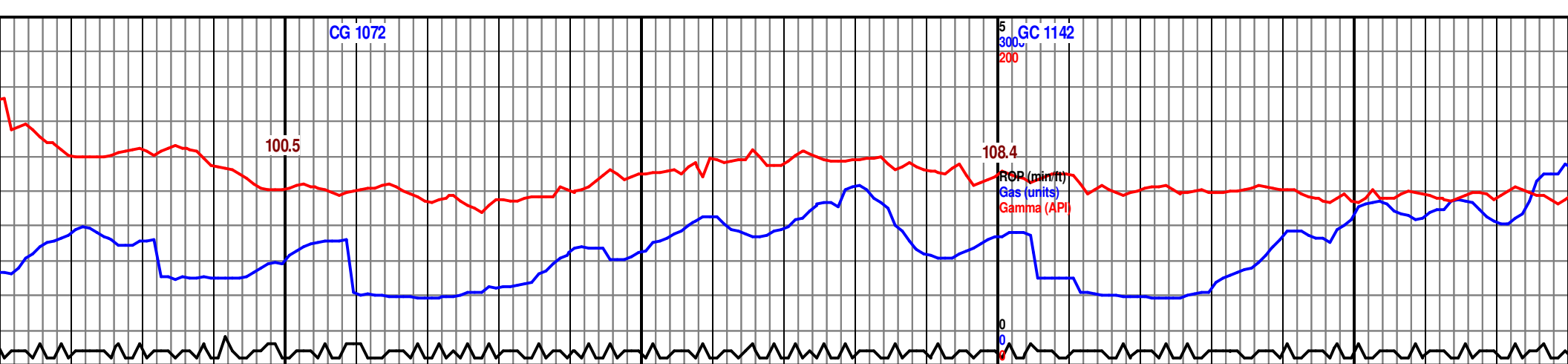


7450				7500				7550				7600			
SFT-FRM, RTHY, V CALC, TR CALC. GY BRN, SM MOTL, BLKY- PLTY, ARB ,SFT-FRM, TR PYR, TR STN, RESID				80% CHK- LTGY- LT BRN, SFT-FRM, RTHY, V CALC, TR CALC. 20% MRLST- DK GY- GY BRN, SM MOTL, BLKY- PLTY, SBWXY, V CALC- LMY, CARB ,SFT-FRM, TR PYR, TR STN, RESID CUT.				80% CHK- LTGY- LT BRN, SFT-FRM, RTHY, V CALC, TR CALC. 20% MRLST- DK GY- GY BRN, SM MOTL, BLKY- PLTY, SBWXY, V CALC- LMY, CARB ,SFT-FRM, TR PYR, TR STN, RESID CUT.				80% CHK- LTGY- LT BRN, SFT-FRM, RTHY, V CALC, TR CALC. 20% MRLST- DK GY- GY BRN, SM MOTL, BLKY- PLTY, SBWXY, V CALC- LMY, CARB ,SFT-FRM, TR STN, RESID CUT.			
				ON GAS BUSTER								6285 TVD Sub Sea (-1718)			
												80% CHK- LTGY- LT BRN, SFT-FRM, RTHY, V CALC 20% MRLST- DK GY- GY BRN, SM MOTL, BLKY- PL SBWXY, V CALC- LMY, CARB ,SFT-FRM, TR STN, R			
												6310 (-1743)			

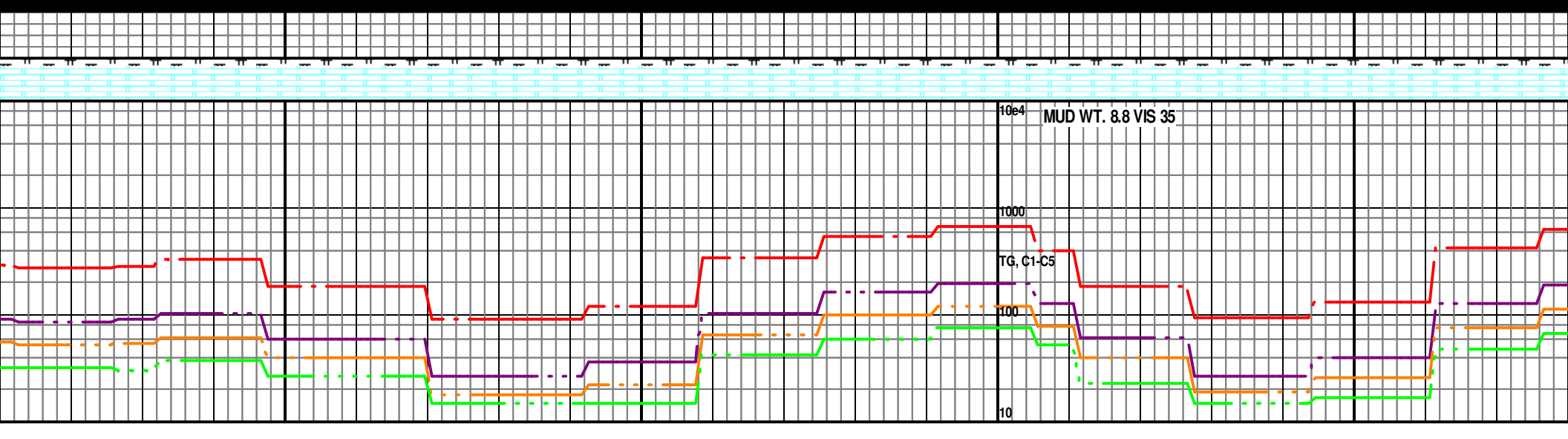


80% CHK- LTGY- LT BRN, SFT-FRM, RTHY, V CALC, TR CALC. 20% MRLST- DK GY- GY BRN, SM MOTL, BLKY- PLTY, SBWXY, V CALC- LMY, CARB ,SFT-FRM, TR STN, RESID CUT.	80% CHK- LTGY- LT BRN, SFT-FRM, RTHY, V CALC, TR CALC. 20% MRLST- DK GY- GY BRN, SM MOTL, BLKY- PLTY, SBWXY, V CALC- LMY, CARB ,SFT-FRM, TR STN, RESID CUT.	80% CHK- LTGY- LT BRN, SFT-FRM, RTHY, V CALC, TR CALC. 20% MRLST- DK GY- GY BRN, SM MOTL, BLKY- PLTY, SBWXY, V CALC- LMY, CARB ,SFT-FRM, TR STN, RESID CUT.	80% CHK- LTGY- LT BRN, SFT-FRM, RTHY, V CALC, TR CALC. 20% MRLST- DK GY- GY BRN, SM MOTL, BLKY- PLTY, SBWXY, V CALC- LMY, CARB ,SFT-FRM, TR STN, RESID CUT.	6285 TVD Sub Sea (-1718) 80% CHK- LTGY- LT BRN, SFT-FRM, RTHY, V CALC, TR CALC. 20% MRLST- DK GY- GY BRN, SM MOTL, BLKY- PLTY, SBWXY, V CALC- LMY, CARB ,SFT-FRM, TR STN.	80% CHK- L 20% MRLST SBWXY, V C
			ON GAS BUSTER		
	7663 MD 89.7 INC 1.7 AZM 6313.52 TVD 1092.54 VS		7758 MD 90.4 INC 1.2 AZM 6313.43 TVD 1186.56 VS	6310 (-1743) 6335 (-1768)	7852 MD 88.6 INC 359.6 AZM 6314.29 TVD 1279.81 VS





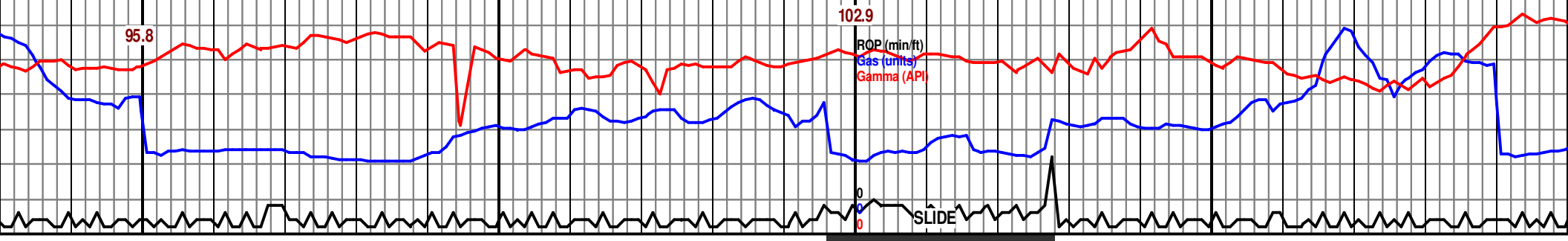
7900				7950				8000				8050			
LTGY- LT BRN, SFT-FRM, RTHY, V CALC, TR CALC. F- DK GY- GY BRN, SM MOTL, BLKY- PLTY, CALC- LMY, CARB ,SFT-FRM, TR STN.				80% CHK- LTGY- LT BRN, SFT-FRM, RTHY, V CALC, TR CALC. 20% MRLST- DK GY- GY BRN, SM MOTL, BLKY- PLTY, SBWXY, V CALC- LMY, CARB ,SFT-FRM, TR STN.				80% CHK- LTGY- LT BRN, SFT-FRM, RTHY, V CALC, TR CALC. 20% MRLST- DK GY- GY BRN, SM MOTL, BLKY- PLTY, SBWXY, V CALC- LMY, CARB ,SFT-FRM, TR STN.				80% CHK- LTGY- LT BRN, SFT-FRM, RTHY, V CALC, TR CALC. 20% MRLST- DK GY- GY BRN, SM MOTL, BLKY- PLTY, SBWXY, V CALC- LMY, CARB ,SFT-FRM, TR STN.			
								6285 TVD Sub Sea (-1718) ON GAS BUSTER 6310 (-1743) 6335 (-1768)							
				7948 MD 89.3 INC 359.6 AZM 6316.12 TVD 1375.20 VS								8042 MD 89.5 INC 359.1 AZM 6317.15 TVD 1468.65 VS			



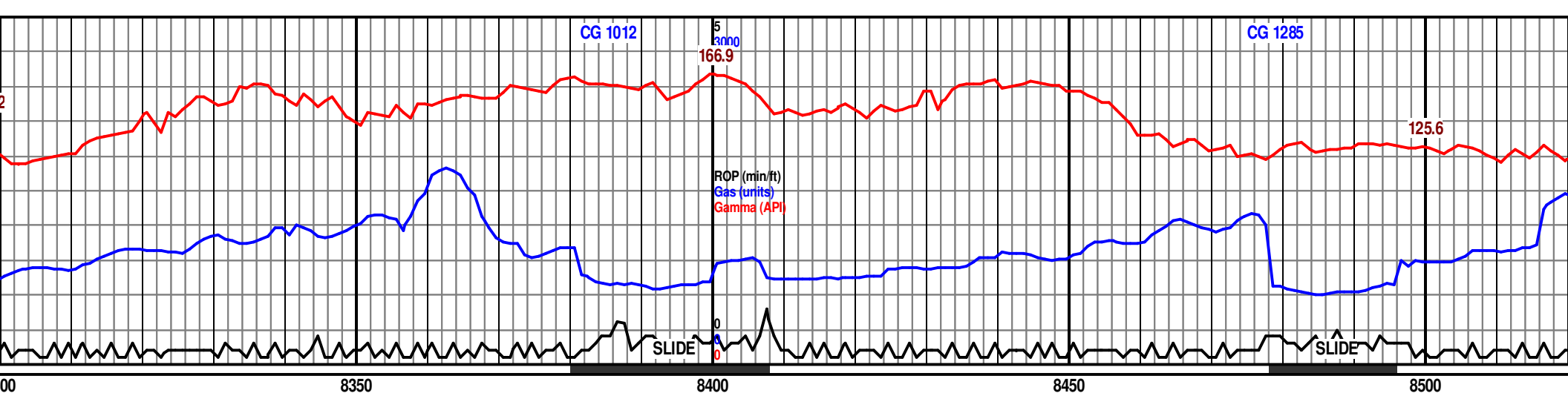
CG 1121

CG 1022

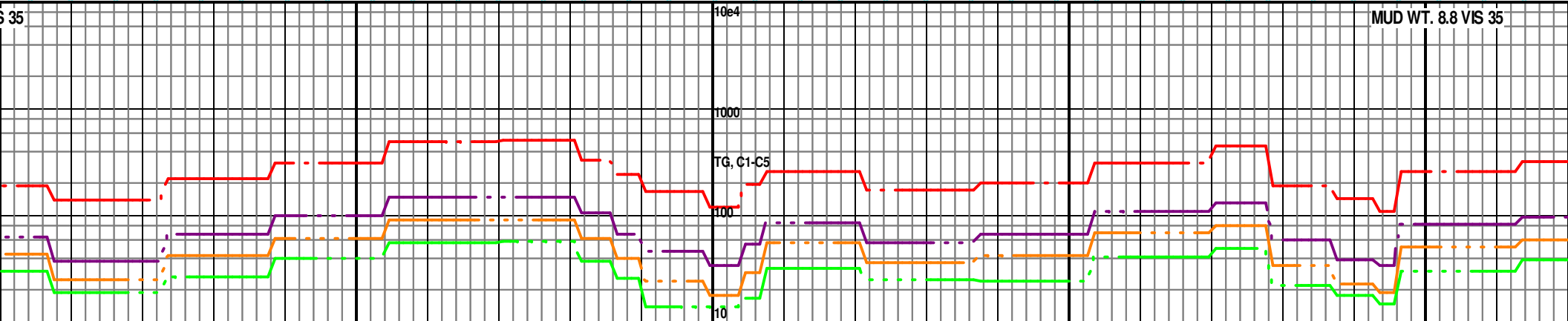
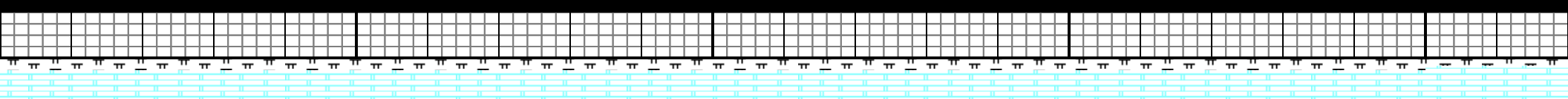
CG 1489

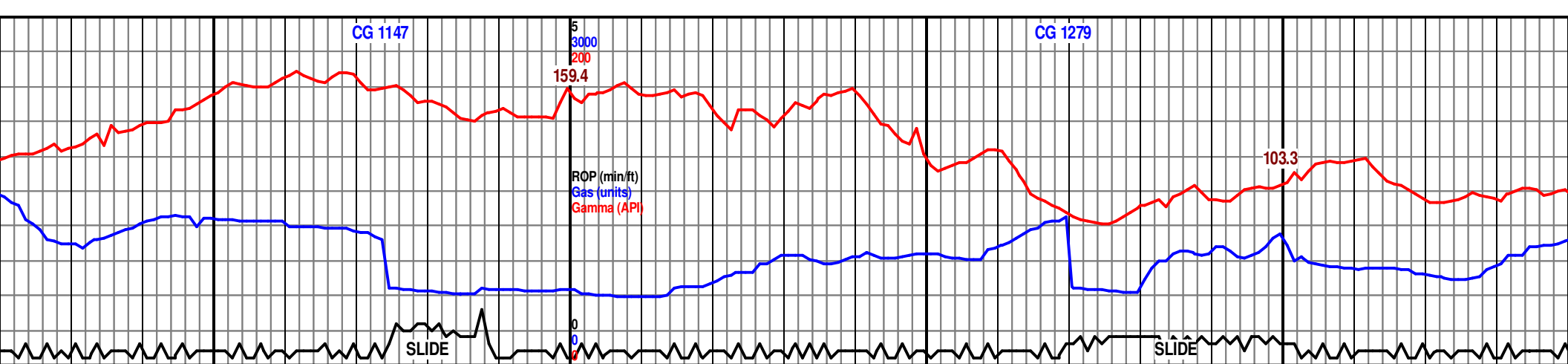


RTHY, V CALC, TR SM MOTL, BLKY- PLTY, RM,TR STN.		80% CHK- LTGY- LT BRN, SFT-FRM, RTHY, V CALC, TR CALC. 20% MRLST- DK GY- GY BRN, SM MOTL, BLKY- PLTY, SBWXY, V CALC- LMY, CARB ,SFT-FRM, TR PYR,TR STN.		80% CHK- LTGY- LT BRN, SFT-FRM, RTHY, V CALC, TR CALC. 20% MRLST- DK GY- GY BRN, SM MOTL, BLKY- PLTY, SBWXY, V CALC- LMY, CARB ,SFT-FRM, TR PYR,TR STN.		6285 TVD Sub Sea (-1718) 80% CHK- LTGY- LT BRN, SFT-FRM, RTHY, V CALC, TR CALC. 20% MRLST- DK GY- GY BRN, SM MOTL, BLKY- PLTY, SBWXY, V CALC- LMY, CARB ,SFT-FRM,TR STN.		80% CHK- LTGY- LT BRN, SFT-FRM, RTHY, V CALC, TR CALC. 20% MRLST- DK GY- GY BRN, SM MOTL, BLKY- PLTY, SBWXY, V CALC- LMY, CARB ,SFT-FRM,TR STN.	
								ON GAS BUSTER	
						6310 (-1743)			

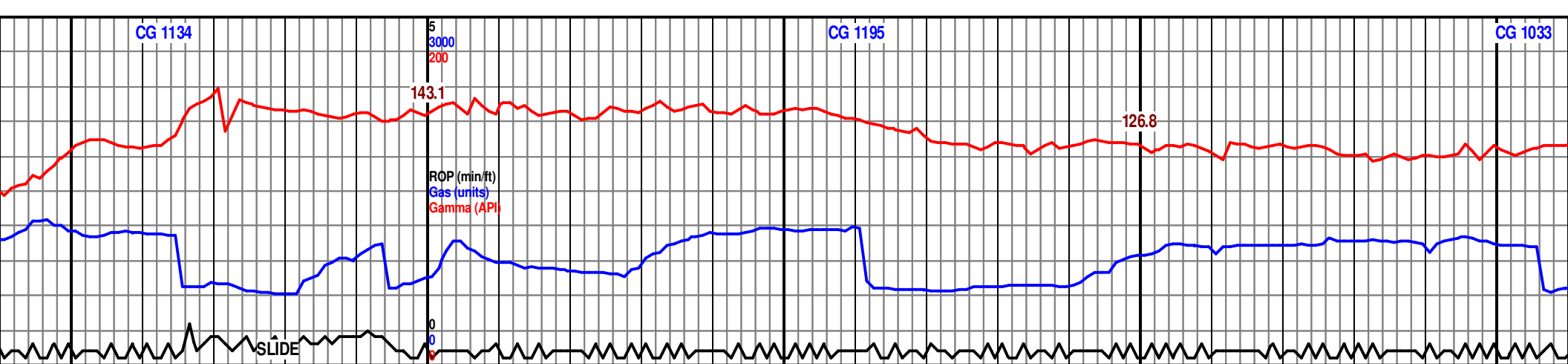


<p>75 % CHK- LTGY- LT BRN, SFT-FRM, RTHY, V CALC, TR CALC. 25% MRLST- DK GY- GY BRN, SM MOTL, BLKY- PLTY, SBWXY, V CALC- LMY, CARB, SFT-FRM, TR STN.</p> <p>8327 MD 88.6 INC 358.3 AZM 6321.13 TVD 1751.73 VS</p>	<p>75 % CHK- LTGY- LT BRN, SFT-FRM, RTHY, V CALC, TR CALC. 25% MRLST- DK GY- GY BRN, SM MOTL, BLKY- PLTY, SBWXY, V CALC- LMY, CARB, SFT-FRM, TR STN.</p>	<p>6285 TVD Sub Sea (-1718)</p> <p>75 % CHK- LTGY- LT BRN, SFT-FRM, RTHY, V CALC, TR CALC. 25% MRLST- DK GY- GY BRN, SM MOTL, BLKY- PLTY, SBWXY, V CALC- LMY, CARB, SFT-FRM, TR PYR, TR STN.</p> <p>6310 (-1743)</p> <p>8423 MD 88.5 INC 0.3 AZM 6323.57 TVD 1847.15 VS</p> <p>6335 (-1768)</p>	<p>75 % CHK- LTGY- LT BRN, SFT-FRM, RTHY, V CALC, TR CALC. 25% MRLST- DK GY- GY BRN, SM MOTL, BLKY- PLTY, SBWXY, V CALC- LMY, CARB, SFT-FRM, TR PYR, TR STN.</p>	<p>80% CHK- LT GY-GY, SF MRLST- MED GY-DK GY CALC-LMY, CARB, SFT-</p> <p>8519 M 90.0 IN 2.2 AZ 6324.8 1942.1</p>
---	--	---	--	--

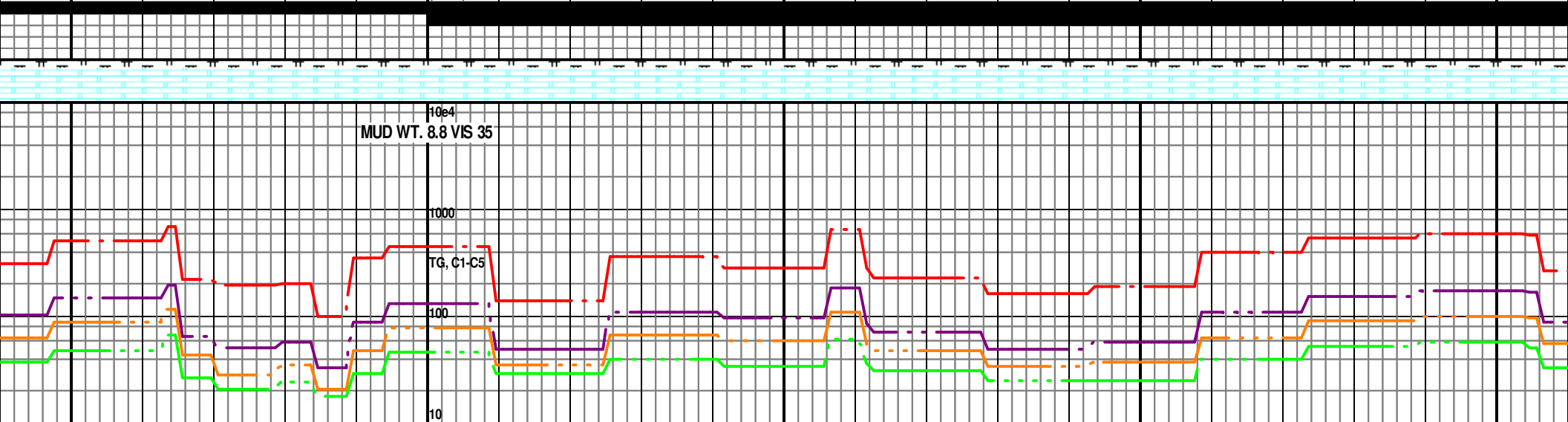


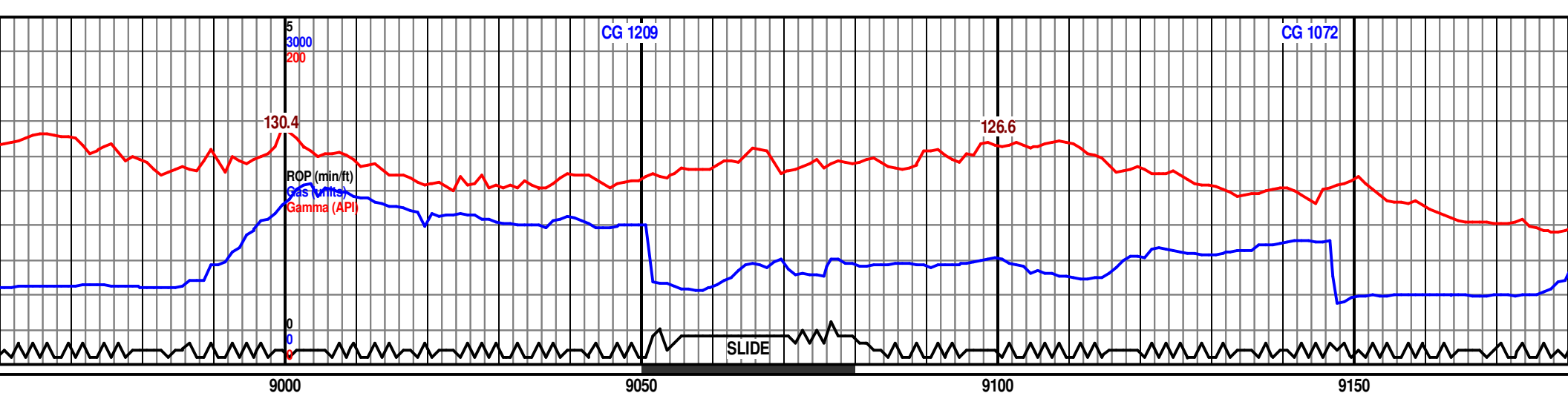


8550				8600				8650				8700			
T-FRM, RTHY, V CALC, TR CALC, 20% SM MOTL, BLKY-PLTY, SBWXY, V FRM, TR PYR, TR STN.				80% CHK- LT GY-GY, SFT-FRM, RTHY, V CALC, TR CALC, 20% MRLST- MED GY-DK GY, SM MOTL, BLKY-PLTY, SBWXY, V CALC-LMY, CARB, SFT-FRM, TR PYR, TR STN.				6285 TVD Sub Sea (-1718) 85% CHK- LT GY-GY, SFT-FRM, RTHY, V CALC, TR CALC, 15% MRLST- MED GY-DK GY, MOTL, BLKY-PLTY, SBWXY, V CALC-LMY, CARB, SFT-FRM, TR PYR, TR STN.				85% CHK- LT GY-GY, SFT-FRM, RTHY, V CALC, TR CALC, 15% MRLST- MED GY-DK GY, MOTL, BLKY-PLTY, SBWXY, V CALC-LMY, CARB, SFT-FRM, TR PYR, TR STN.			

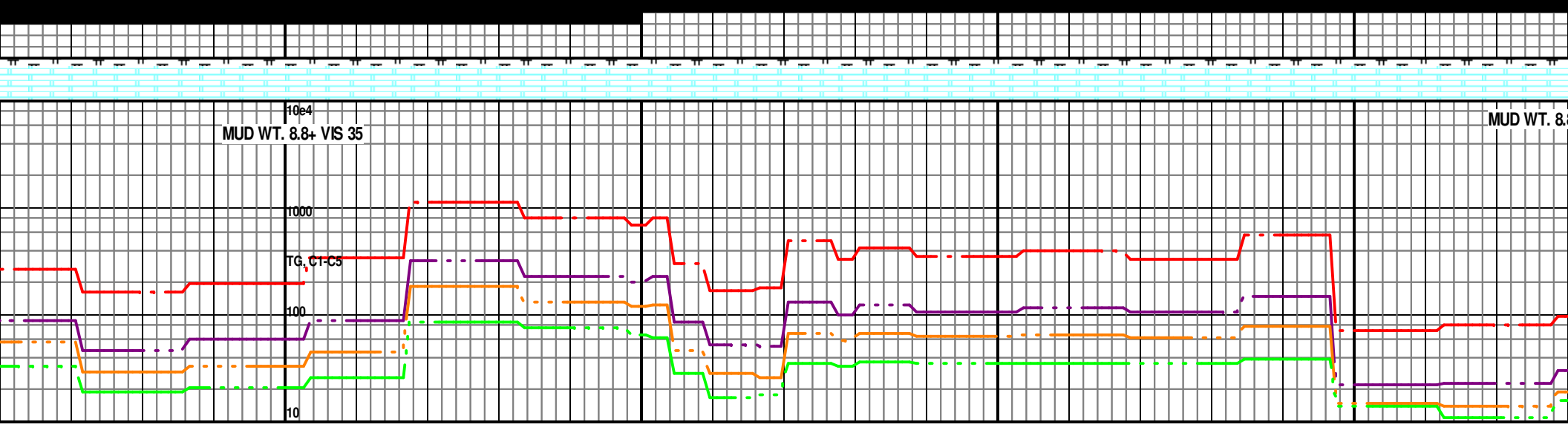


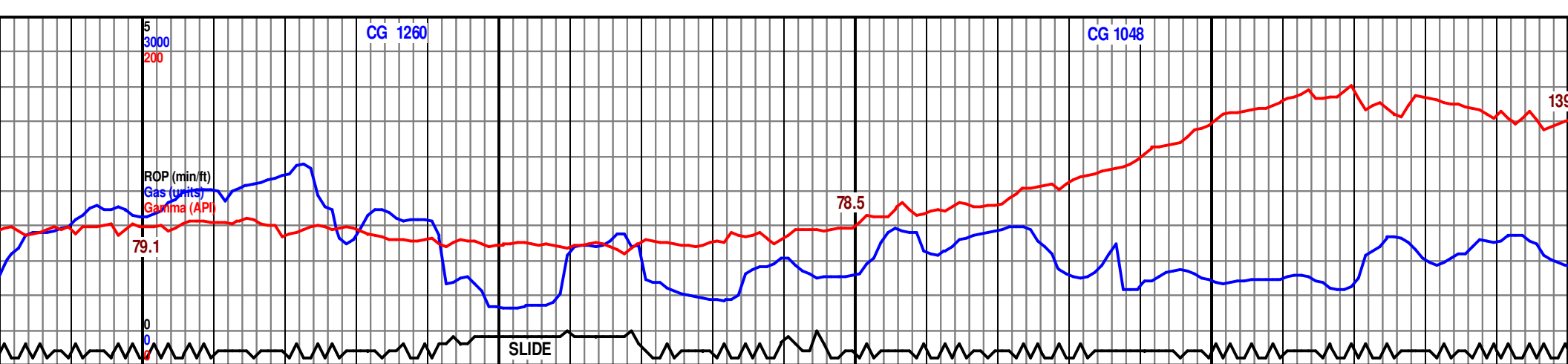
8750					8800					8850					8900					8950				
CALC. SBWXY, V					6285 TVD Sub Sea (-1718)					90% CHK- LT GY-GY, SFT-MOD FRM, RTHY, V CALC, TR CALC. 10% MRLST- MED GY-DK GY, MOTL, BLKY-PLTY, SBWXY, V CALC-LMY, CARB, SFT-FRM, TR PYR, TR STN.					90% CHK- LT GY-GY, SFT-MOD FRM, RTHY, V CALC, TR CALC. 10% MRLST- MED GY-DK GY, MOTL, BLKY-PLTY, SBWXY, V CALC-LMY, CARB, SFT-FRM, TR PYR, TR STN.					90% CHK- L MRLST- ME CALC-LMY,				
80% CHK- LT GY-GY, SFT-MOD FRM, RTHY, V CALC, TR CALC. 20% MRLST- MED GY-DK GY, MOTL, BLKY-PLTY, SBWXY, V CALC-LMY, CARB, SFT-FRM, TR PYR, TR STN.					80% CHK- LT GY-GY, SFT-MOD FRM, RTHY, V CALC, TR CALC. 20% MRLST- MED GY-DK GY, MOTL, BLKY-PLTY, SBWXY, V CALC-LMY, CARB, SFT-FRM, TR PYR, TR STN.																			
ON GAS BUSTER																								
					8806 MD 89.3 INC 358.3 AZM 6322.95 TVD 2227.05 VS										8900 MD 90.0 INC 358.0 AZM 6323.51 TVD 2320.70 VS									
					6335 (-1768)																			



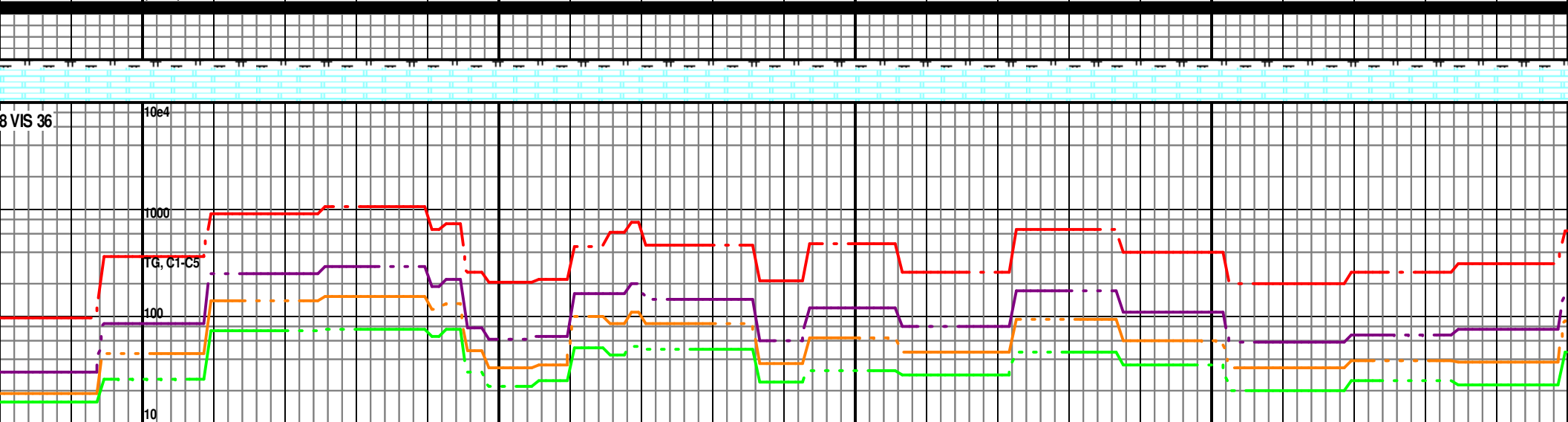


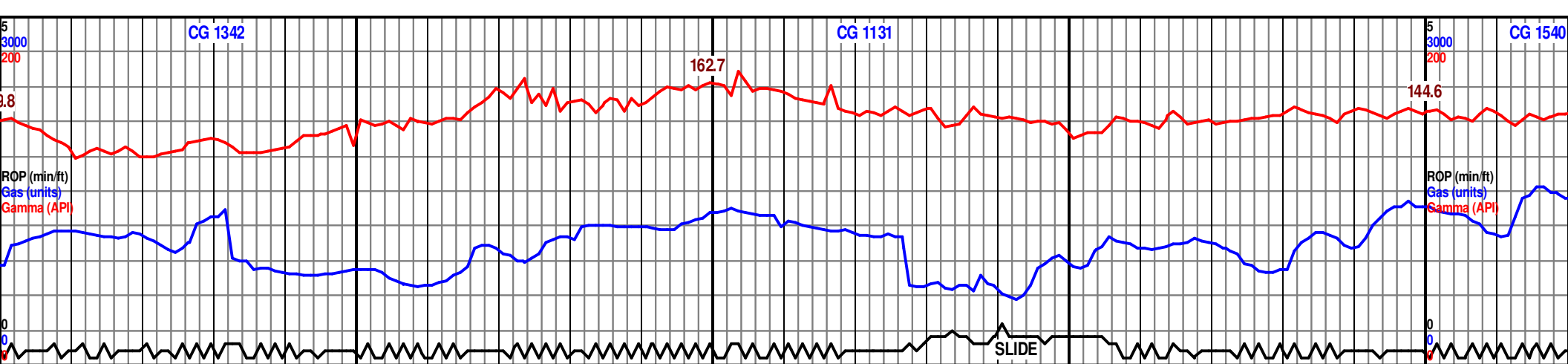
T GY-GY, SFT-FRM, RTHY, V CALC, TR CALC. 10% D GY-DK GY, MOTL, BLKY-PLTY, SBWXY, V CARB, SFT-FRM, TR PYR, TR STN.		6285 TVD Sub Sea (-1718) 90% CHK- LT GY-GY, SFT-FRM, RTHY, V CALC, TR CALC. 10% MRLST- MED GY-DK GY, MOTL, BLKY-PLTY, SBWXY, V CALC-LMY, CARB, SFT-FRM, TR PYR, TR STN.		80% CHK- LT GY-GY, SFT-FRM, RTHY, V CALC, TR CALC. 20% MRLST- MED GY-DK GY, MOTL, BLKY-PLTY, SBWXY, V CALC-LMY, CARB, SFT-FRM, TR PYR, TR STN.		80% CHK- LT GY-GY, SFT-FRM, RTHY, V CALC, TR CALC. 20% MRLST- MED GY-DK GY, MOTL, BLKY-PLTY, SBWXY, V CALC-LMY, CARB, SFT-FRM, TR PYR, TR STN.		80% CHK- LT GY-GY, SFT-FRM, RTHY, V CALC, TR CALC. 20% MRLST- MED GY-DK GY, MOTL, BLKY-PLTY, SBWXY, V CALC-LMY, CARB, SFT-FRM, TR PYR, TR STN.	
8995 MD 90.2 INC 357.4 AZM 6323.30 TVD 2415.41 VS		6310 (-1743)		ON GAS BUSTER W/ INTERMITTENT 1-2FT FLARE		9090 MD 89.6 INC 359.9 AZM 6323.42 TVD 2509.97 VS			
		6335 (-1768)							



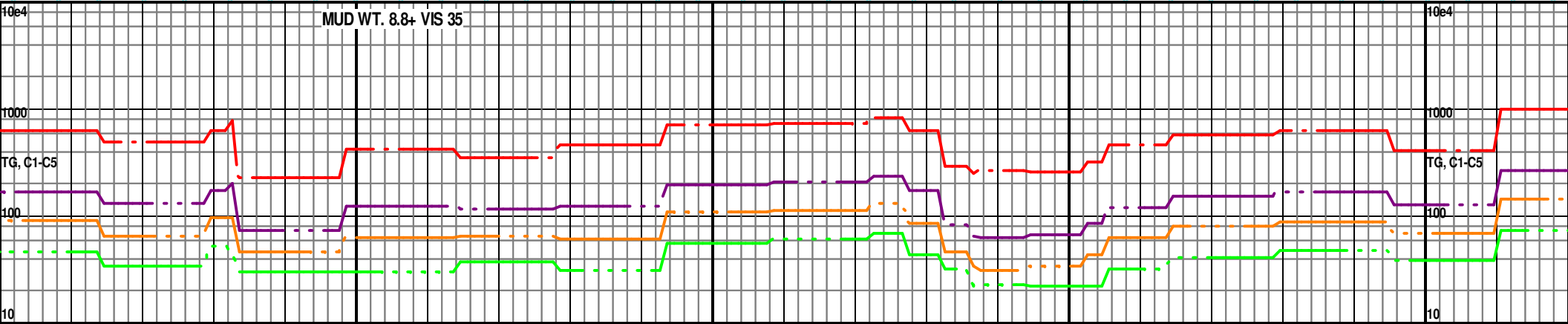
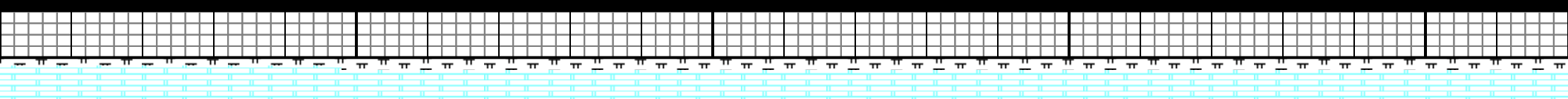


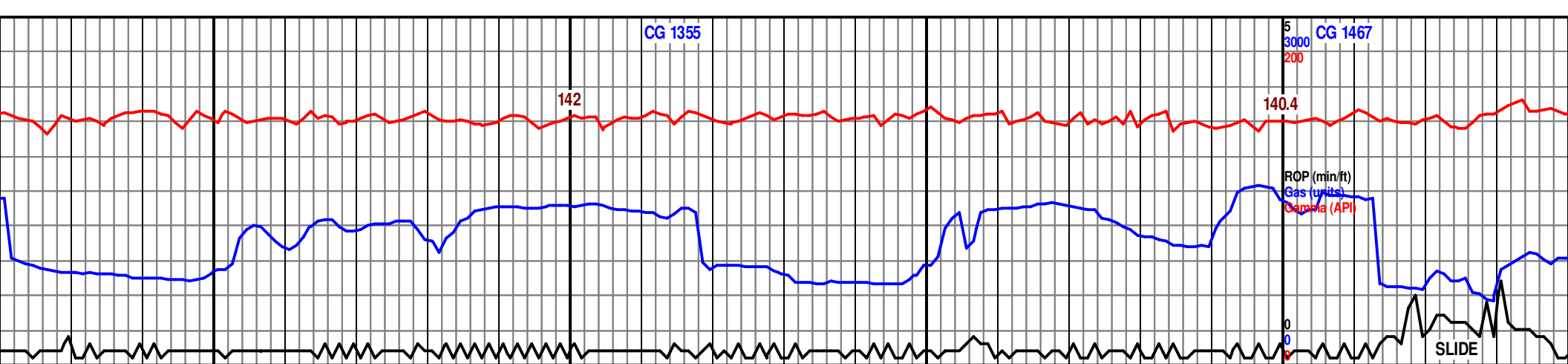
9200				9250				9300				9350				9400			
V CALC, TR CALC, 20% -PLTY, SBWXY, V TR STN.				6285 TVD Sub Sea (-1718) 85% CHK- LT GY-GY, SFT-FRM, RTHY, V CALC, TR CALC, 15% MRLST- MED GY-DK GY, MOTL, BLKY-PLTY, SBWXY, V CALC-LMY, CARB, SFT-FRM, TR PYR, TR STN.				85% CHK- LT GY-GY, LT BRN IN PTS, SFT-FRM, RTHY, V CALC, TR CALC, 15% MRLST- MED GY-DK GY, MOTL, BLKY-PLTY, SBWXY, V CALC-LMY, CARB, SFT-FRM, TR PYR, TR STN.				80% CHK- LT GY-GY, LT BRN IN PTS, SFT-FRM, RTHY, V CALC, TR CALC, 20% MRLST- MED GY-DK GY, MOTL, BLKY-PLTY, SBWXY, V CALC-LMY, CARB, SFT-FRM, TR PYR, TR STN.				80% CHK- LT GY-GY, LT BRN IN PTS, SFT-FRM, RTHY, V CALC, TR CALC, 20% MRLST- MED GY-DK GY, MOTL, BLKY-PLTY, SBWXY, V CALC-LMY, CARB, SFT-FRM, TR PYR, TR STN.			
												MIDNIGHT DEPTH 11/20/2013 9338'							
9185 MD 89.9 INC 359.2 AZM 6323.78 TVD 2604.39 VS				6310 (-1743)				9280 MD 89.9 INC 1.7 AZM 6323.88 TVD 2698.63 VS								9374 MD 90.5 INC 1.0 AZM 6323.53 TVD 2791.69 VS			
				6335 (-1768)															



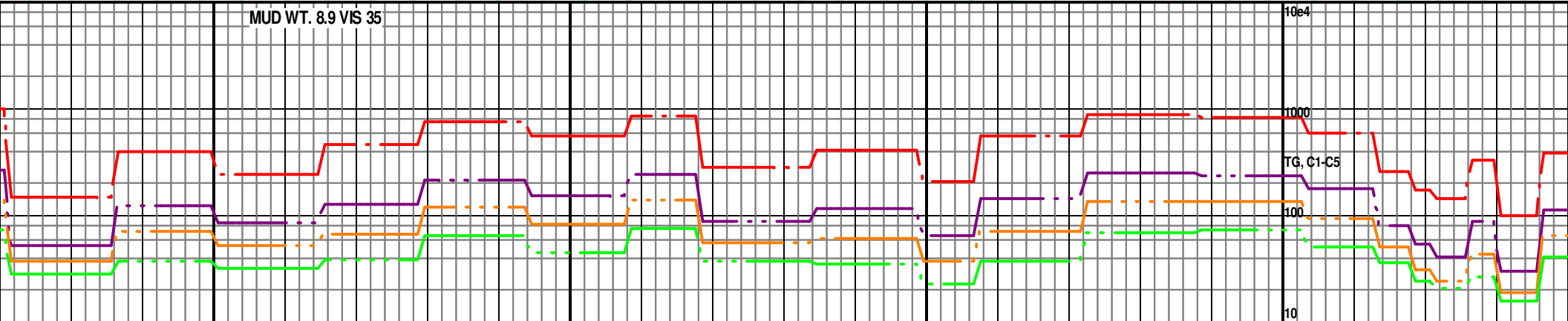
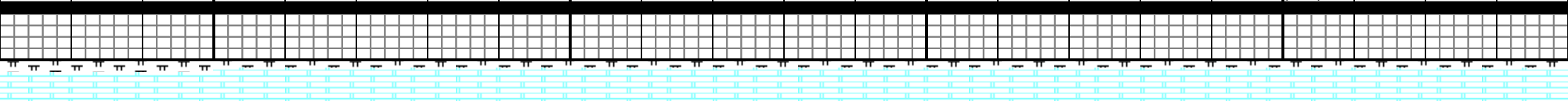


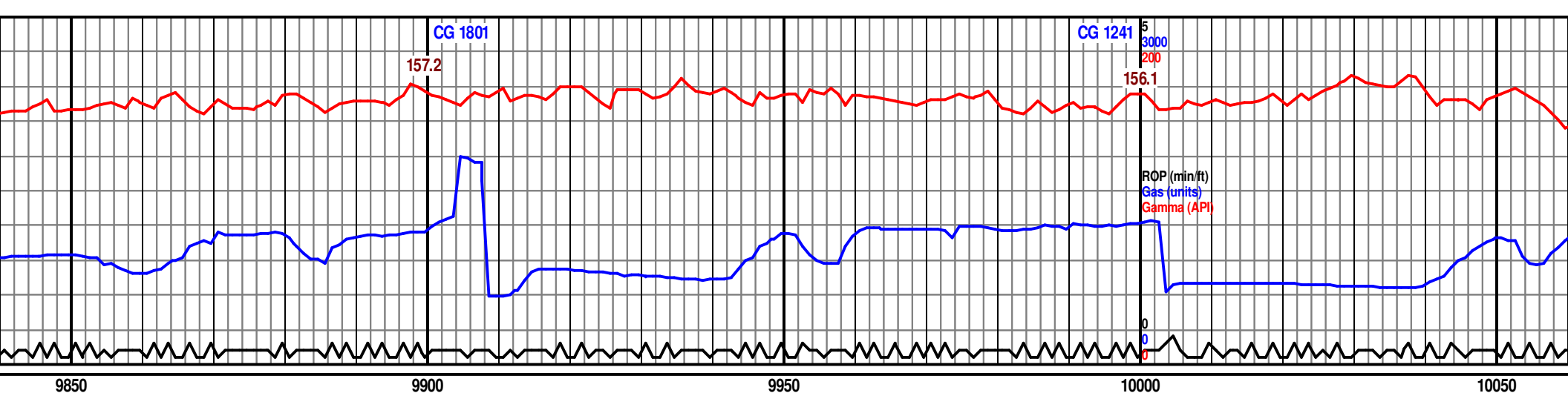
00		9450		9500		9550		9600	
6285 TVD Sub Sea (-17)18				75% CHK- LT GY-GY, LT BRN IN PTS, SFT-MOD FRM, RTHY, V CALC, TR CALC. 25% MRLST- MED GY-DK GY, MOTL IN PTS, BLKY-PLTY, SBWXY, V CALC-LMY, TR PYR, TR STN.		75% CHK- LT GY-GY, LT BRN IN PTS, SFT-MOD FRM, RTHY, V CALC, TR CALC. 25% MRLST- MED GY-DK GY, MOTL IN PTS, BLKY-PLTY, SBWXY, V CALC-LMY, TR PYR, TR STN.		70% CHK- LT GY-GY, SM LT BRN, SFT-FRM, RTHY, V CALC, TR CALC. 30% MRLST- MED GY-DK GY, MOTL, BLKY-PLTY, SBWXY, V CALC-LMY, TR PYR, TR STN.	
80% CHK- LT GY-GY, LT BRN IN PTS, SFT-FRM, RTHY, V CALC, TR CALC. 20% MRLST- MED GY-DK GY, MOTL, BLKY-PLTY, SBWXY, V CALC-LMY, CARB, SFT-FRM, TR PYR, TR STN.		ON GAS BUSTER W/ INTERMITTENT 1-2FT FLARE						6285 TVD Sub Sea (-17)18	
								70% CHK- LT GY-GY, SM TR CALC. 30% MRLST- M SBWXY, V CALC-LMY, TR	
6310 (-1743)		9469 MD 90.9 INC 1.6 AZM 6322.38 TVD 2885.73 VS				9563 MD 89.3 INC 2.5 AZM 6322.22 TVD 2978.62 VS		6310 (-1743)	
6335 (-1768)								6335 (-1768)	



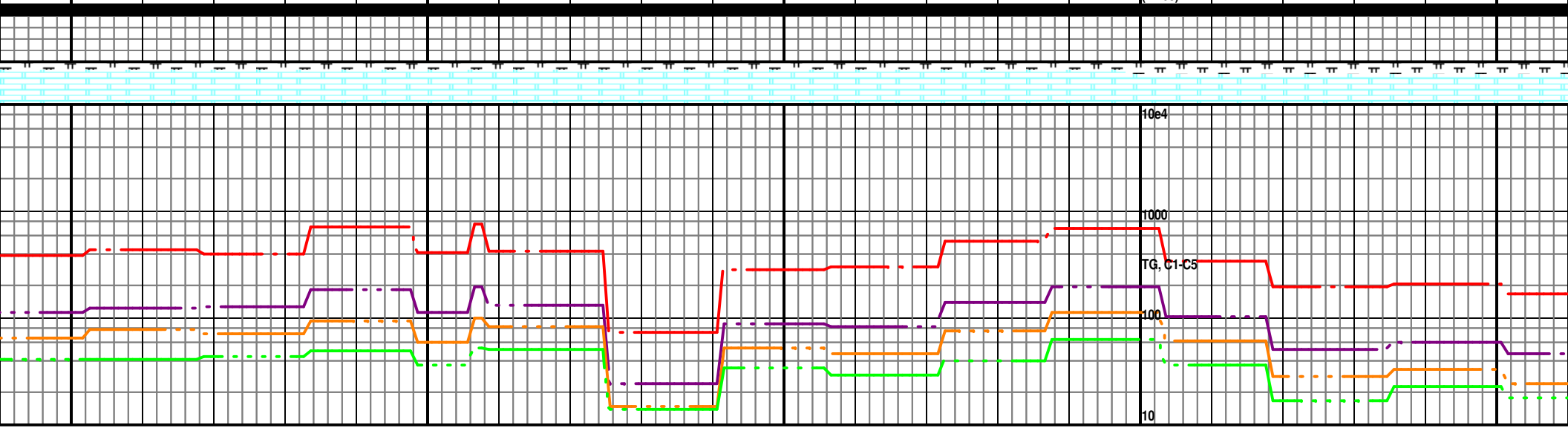


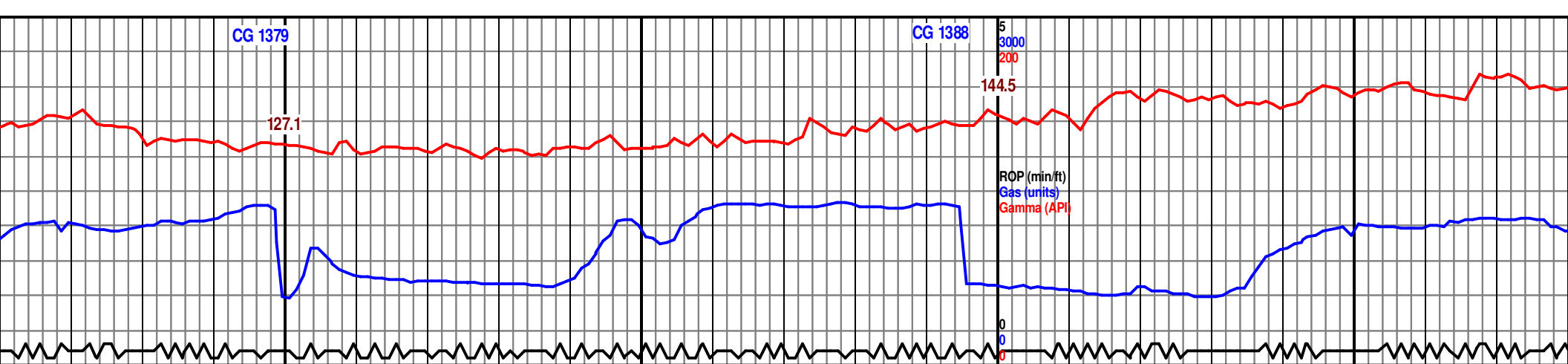
9650			9700			9750			9800		
LT BRN, SFT-FRM, RTHY, V CALC, MED GY-DK GY, MOTL, BLKY-PLTY, R PYR, TR STN.			75% CHK- LT GY-GY, SM LT BRN, SFT-FRM, RTHY, V CALC, TR CALC. 25% MRLST- MED GY-DK GY, MOTL, BLKY-PLTY, SBWXY, V CALC-LMY, TR PYR, TR STN.			75% CHK- LT GY-GY, SM LT BRN, SFT-FRM, RTHY, V CALC, TR CALC. 25% MRLST- MED GY-DK GY, MOTL, BLKY-PLTY, SBWXY, V CALC-LMY, TR PYR, TR STN.			6285 TVD Sub Sea (-1718) 75% CHK- LT GY-GY, LT BRN, SFT-FRM, RTHY, V CALC. 25% MRLST- MED GY-DK GY, MOTL, BLKY- SBWXY, V CALC-LMY, TR PYR, TR STN.		
9659 MD 89.5 INC 2.1 AZM 6323.21 TVD 3073.42 VS						9755 MD 89.5 INC 2.6 AZM 6324.05 TVD 3168.21 VS			6310 (-1743) 6335 (-1768)		



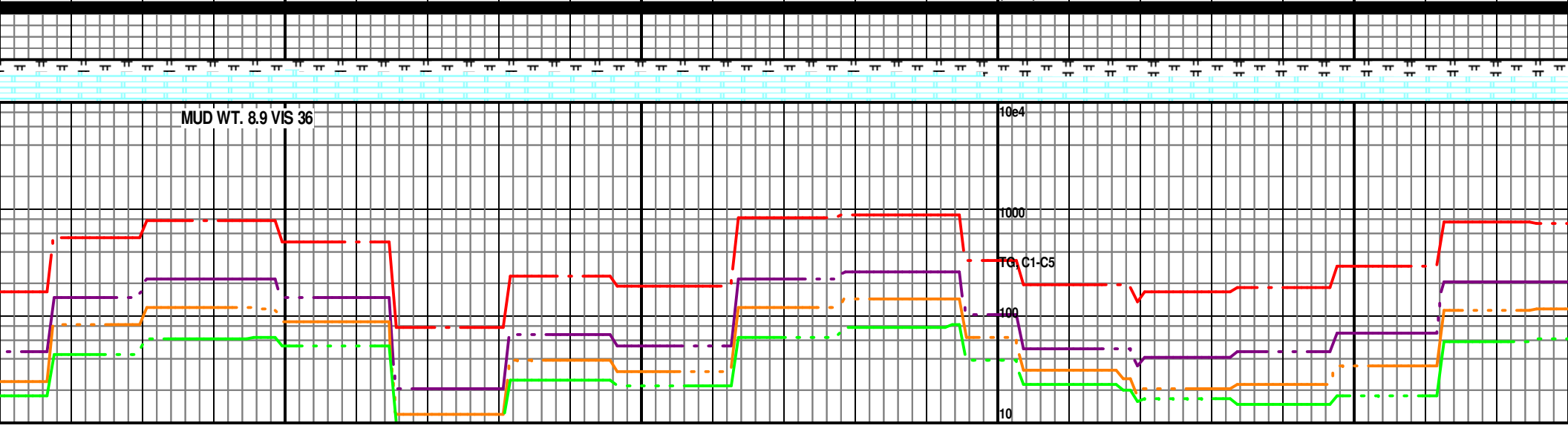


9850		9900		9950		10000		10050	
75% CHK- LT GY-GY, LT BRN, SFT-FRM, RTHY, V CALC, TR CALC. 25% MRLST- MED GY-DK GY, MOTL, BLKY-PLTY, SBWXY, V CALC-LMY, TR PYR, TR STN.		75% CHK- LT GY-GY, LT BRN, SFT-FRM, RTHY, V CALC, TR CALC. 25% MRLST- MED GY-DK GY, MOTL, BLKY-PLTY, SBWXY, V CALC-LMY, TR PYR, TR STN.		75% CHK- LT GY-GY, LT BRN, SFT-FRM, RTHY, V CALC, TR CALC. 25% MRLST- MED GY-DK GY, MOTL, BLKY-PLTY, SBWXY, V CALC-LMY, TR PYR, TR STN.		6285 TVD Sub Sea (-1718) 70% CHK- LT GY-GY, SME LT BRN, SFT-FRM, RTHY, V CALC, TR CALC. 30% MRLST- MED GY-DK GY, MOTL, BLKY-PLTY, SBWXY, V CALC-LMY, TR PYR, TR STN.		70% CHK- LT GY-GY, SME LT BRN, SFT-FRM, RTHY, V CALC, TR CALC. 30% MRLST- MED GY-DK GY, MOTL, BLKY-PLTY, SBWXY, V CALC-LMY, TR PYR, TR STN.	
ON GAS BUSTER W/ OCCASIONAL 1-2FT FLARE									
9850 MD 89.1 INC 0.9 AZM 6325.23 TVD 3262.15 VS				9946 MD 88.9 INC 0.9 AZM 6326.91 TVD 3357.29 VS		6310 (-1743)		10042 MD 89.1 INC 0.7 AZM 6328.63 TVD 3452.44 VS	
						6335 (-1768)			





<p>LT GY-GY, SME LT BRN, SFT-FRM, RTHY, V CALC, 20% MRLST- MED GY-DK GY, MOTL, BLKY-PLTY, V CALC-LMY, TR PYR, TR STN.</p>	<p>80% CHK- LT GY-GY, LT BRN, SFT-FRM, RTHY, V CALC, TR CALC. 20% MRLST- MED GY-DK GY, MOTL, BLKY-PLTY, SBWXY, V CALC-LMY, TR PYR, TR STN.</p> <p>10136 MD 89.7 INC 0.9 AZM 6329.66 TVD 3545.62 VS</p>	<p>80% CHK- LT GY-GY, LT BRN, SFT-FRM, RTHY, V CALC, TR CALC. 20% MRLST- MED GY-DK GY, MOTL, BLKY-PLTY, SBWXY, V CALC-LMY, TR PYR, TR STN.</p>	<p>6285 TVD Sub Sea (-1718)</p> <p>75% CHK- LT GY-GY, LT BRN, SFT-FRM, RTHY, V CALC, TR CALC. 25% MRLST- MED GY-DK GY, MOTL, BLKY-PLTY, SBWXY, V CALC-LMY, TR STN.</p> <p>6310 (-1743)</p> <p>10232 MD 90.2 INC 0.5 AZM 6329.73 TVD 3640.81 VS</p> <p>6335 (-1768)</p>	<p>75% CHK- LT GY-GY, LT BRN, SFT-FRM, RTHY, V CALC, TR CALC. 25% MRLST- MED GY-DK GY, MOTL, BLKY-PLTY, SBWXY, V CALC-LMY, TR STN.</p>
---	--	--	--	--



CG 1072

CG 1221

53000

CG 838

147.3

163.3

ROP (min/ft)
Gas (units)
Gamma (API)

SLIDE

SLIDE

10300

10350

10400

10450

10500

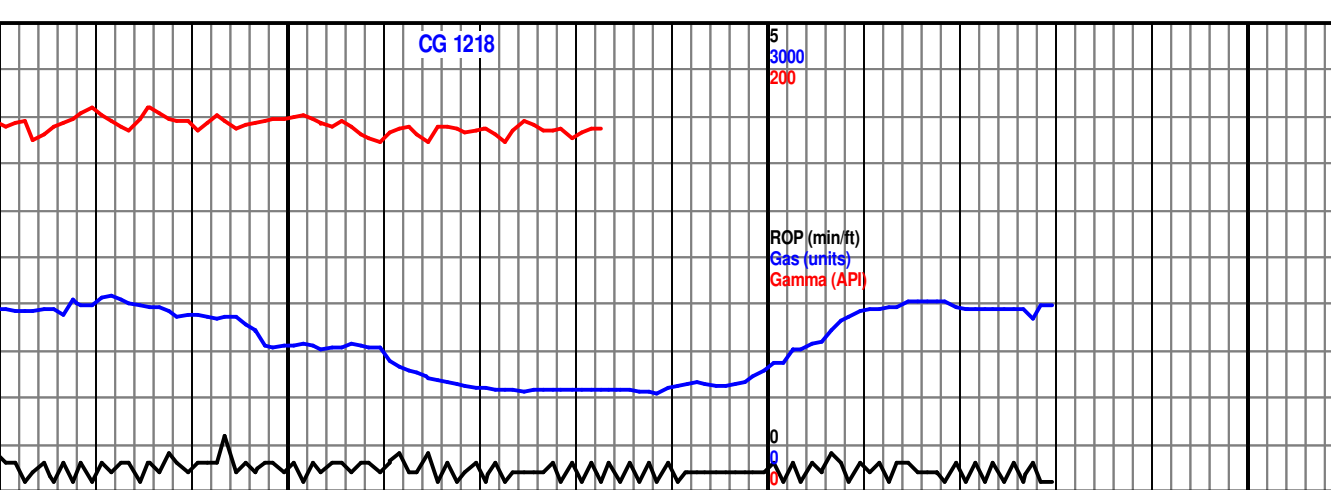
M, RTHY, V CALC, TR
MOTL, BLKY-PLTY,75% CHK- LT GY-GY, LT BRN, SFT-FRM, RTHY, V CALC, TR
CALC. 25% MRLST- MED GY-DK GY, MOTL, BLKY-PLTY,
SBWXY, V CALC-LMY, TR STN.75% CHK- LT GY-GY, LT BRN, SFT-FRM, RTHY, V CALC, TR
CALC. 25% MRLST- MED GY-DK GY, MOTL, BLKY-PLTY,
SBWXY, V CALC-LMY, TR STN.6285 TVD
Sub Sea (-1718)
75% CHK- LT GY-GY, LT BRN, SFT-FRM, RTHY, V CALC, TR
CALC. 25% MRLST- MED GY-DK GY, MOTL, BLKY-PLTY,
SBWXY, V CALC-LMY, TR STN.75% CHK- LT GY-GY, LT BRN, SFT-FRM, RTHY, V CALC, TR
CALC. 25% MRLST- MED GY-DK GY, MOTL, BLKY-PLTY,
SBWXY, V CALC-LMY, TR STN.10328 MD
90.8 INC
0.6 AZM
6328.85 TVD
3736.03 VS10424 MD
90.5 INC
359.6 AZM
6327.75 TVD
3831.33 VSON GAS BUSTER W/
OCCASIONAL 1-2 FT FLARE6310
(-1743)6335
(-1768)

MUD WT. 8.8 VIS 35

MUD WT. 9.1 VIS 37

10e4

TG, C1-C5



10750				10800				10850			
BRN, SFT-FRM, RTHY, V CALC, TR GY-DK GY, MOTL, BLKY-PLTY, R STN.				70% CHK- LT GY-GY, LT BRN, SFT-FRM, RTHY, V CALC, TR CALC. 30% MRLST- MED GY-DK GY, MOTL, BLKY-PLTY, SBWXY, V CALC-LMY, TR STN.				6285 TVD Sub Sea (-1718) 70% CHK- LT GY-GY, LT BRN, SFT-FRM, RTHY, V CALC, TR CALC. 30% MRLST- MED GY-DK GY, MOTL, BLKY-PLTY, SBWXY, V CALC-LMY, TR STN.			