

Camenisch 7-15 – Bradenhead Procedure

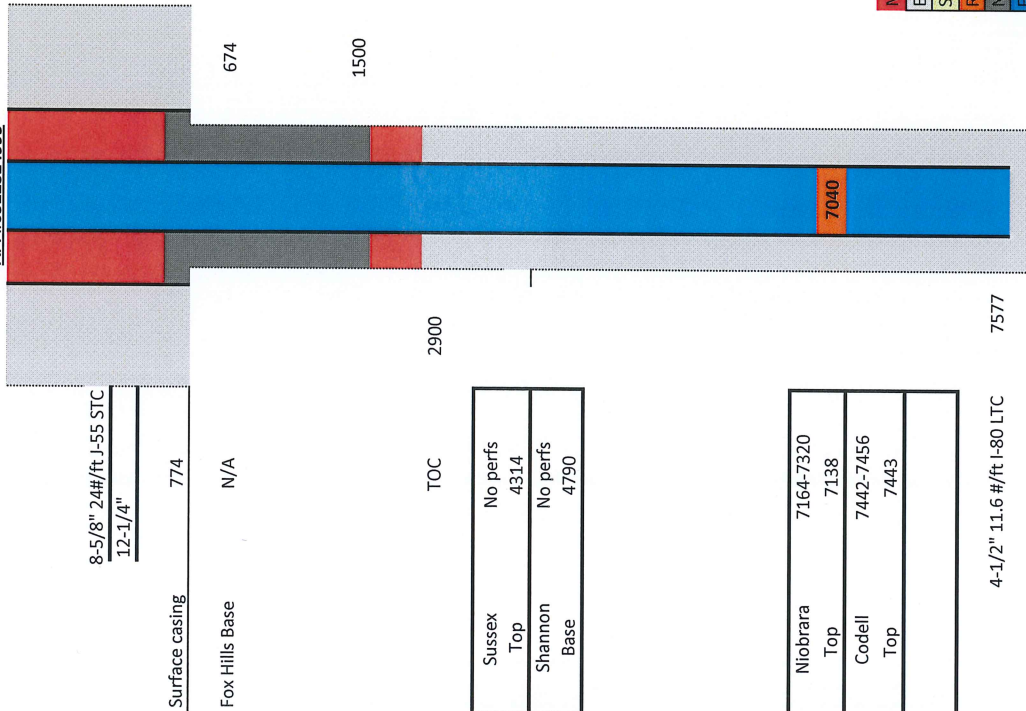
- 1 Call Foreman or Lead Operator at least 24 hr prior to rig move. If not already completed, request that they catch and remove plunger, isolate production equipment and remove any automation equipment prior to the rig showing up. Install perimeter fence as needed.
- 2 MIRU Slick line. Fish plunger if necessary and tag for PBSD (should be at 7549').
- 3 Prepare location for base beam rig.
- 4 Spot 12 jts of 2-3/8" 4.7# J-55 8RD EUE tbg.
- 5 Spot 6 2 7/8" 16# drill collars
- 6 MIRU WO rig. Kill well with fresh water with biocide. ND wellhead, NU BOPs.
- 7 Run two 2" or one 3" line(s) from starting head to return tanks. (Need to be able to circulate at 10 bbl/min).
- 8 PU 8-10' landing joint with TIW safety valve on top and screw into the tbg hanger. Back out the lock down pins and pull up on the tbg string to break any possible sand bridges. Do not exceed 80% of tubing tensile strength, or 57,384-lb.
- 9 Unseat tbg hanger and LD tbg hanger and landing joint. Install rubber wiper in stripping head.
- 10 MIRU EMI equipment. TOOH with 2-3/8" tbg. EMI tbg while TOOH. Lay down joints with wall loss or penetrations >35%. Replace joints as necessary. Keep yellow and blue band tubing. Note joint number and depth of tubing leak(s) on production equipment failure report in OpenWells. Clearly mark all junk (red band) tubing sent to yard.
- 11 MIRU wire line.
- 12 RIH with CCL/Gauge Ring to 7040'. POOH with wire line.
- 13 RIH with wire line and 4.5" RBP (4.5" 11.6# I-80). Set RBP at +/- 7040' (Collars at 7018' and 7062'). Dump bail 2 sx sand on top of RBP. RDMO wire line.
- 14 Pressure test RBP to 1,000 psi for 15 minutes. (Pressure test to make sure plug is set correctly)
- 15 PU and RIH with CCL and 3-1/8" perforating gun, 0.60" EHD charge, 3 spf 120 deg phasing. Perforate 4 1/2" csg @ +/- 1500' avoiding any collars identified by CCL. POOH with wire line. RDMO wire line company.
- 16 MIRU Cement company. Establish circulation with 9.0 ppg drilling mud at 5 bbl/min or maximum rate achievable without breaking down formation.
- 17 Commence pumping cement job at pump rate of 5 bbl/min (or max rate achievable not exceeding 1,000 psi wellhead pressure) consisting of 5 bbl fresh water, 20 bbl sodium meta silicate and 5 bbl fresh water; 52 bbl (190 sx) of Type III + with CaCl₂ and 2 lb/sk PS Flake mixed at 14.0 ppg and 1.53 cuft/sk (Cement from 1500' to 674'). Drop wiper plug and Under displace by 1.5 bbl (21.8 bbl total, leave 100' of cement in csg. Do not over displace).
- 18 Break lines and clean up with fresh water. RDMO cement company.
- 19 NU tbg head and BOP.
- 20 Leave well shut in for 48 hours with 100 psi on it.
- 21 Circulate gas out of hole with fresh water with biocide.
- 22 PU 6 2 7/8" 16# drill collars with 3-7/8" bit/mill and TIH with 2-3/8" tbg and crossover. Rig up power swivel and mill to +/- 1500'.
- 23 TOOH with bit and SB tbg. LD collars.



- 24 MIRU wire line and run CCL-GR-CBL-VDL from 1600' to 100'. If cement is not above 674', contact engineering for further instructions. RDMO wire line.
- 25 Pressure test csg to 1,000 psig. If pressure does not hold, contact engineering for further support.
- 26 TIH with 2 3/8" tbg and retrieving head and tag sand above RBP at +/- 7040'. Circulate sand off RBP. Latch onto RBP and release RBP. TOOH standing back all 2 3/8" tbg and LD RBP.
- 27 TIH with 2-3/8" XN SN, and 2-3/8" 4.7# J55 EUE tbg. Hydro test tbg while TIH.
- 28 Land tbg @ +/- 7412' (1 jt above top Codell perf). Broach tbg to XN nipple.
- 29 ND BOP, NU master valve and hydrotest tubing head to 5,000 psi for 15 minutes.
- 30 RMDO WO rig.
- 31 Clean location and swab well back to production. Notify field foreman/field coordinator of finished work and turn well back over to production team.

Existing

KB=10'
Camenisch 7-15
API H0522324995



Type III		Sh/Sx Cement	
		Wellbore Diameter (in)	8.50
		Hole/Csg Capacity (ft3/ft)	0.28
		Cement Coverage Height (ft)	826
		Cement Volume (ft3)	234
		20% Excess (ft3)	281
		Cement Vol (bbl)	52
		Sx	189
		TFV (bbl)	23.31
		AFV (bbl)	21.76
		Cic (ft)	100
		Under Disp Vol (bbl)	1.55

Mud
Existing cement
Sand Plug
RBP
New Cement
Fresh Water w/ Bio

Niobrara	7164-7320
Top	7138
Codell	7442-7456
Top	7443

4-1/2" 11.6#/ft I-80 LTC