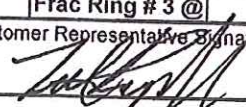


**HALLIBURTON****Cementing Job Summary***The Road to Excellence Starts with Safety*

Sold To #: 300721		Ship To #: 3107687		Quote #:		Sales Order #: 900795979	
Customer: WPX ENERGY ROCKY MOUNTAIN LLC-EBUS				Customer Rep: Ragsdale, Ted			
Well Name: RG		Well #: 331-23-298		API/UWI #:			
Field: SULFUR CREEK		City (SAP): MEEKER		County/Parish: Rio Blanco		State: Colorado	
Contractor: Cyclone		Rig/Platform Name/Num: Cyclone 29					
Job Purpose: Cement Multiple Stages							
Well Type: Development Well		Job Type: Cement Multiple Stages					
Sales Person: MAYO, MARK		Srv Supervisor: DEAN, MARK		MBU ID Emp #: 454214			
<b>Job Personnel</b>							
HES Emp Name	Exp Hrs	Emp #	HES Emp Name	Exp Hrs	Emp #	HES Emp Name	Exp Hrs
DEAN, MARK	10	454214	HUNTER, SAMUEL	10	479669	LYNGSTAD, FREDRICK D	8
CHRISTOPHE			DAVID				
WYATT, BARRETT	10	543562					403742
DOUGLAS							
<b>Equipment</b>							
HES Unit #	Distance-1 way	HES Unit #	Distance-1 way	HES Unit #	Distance-1 way	HES Unit #	Distance-1 way
11526494	80	11189139					
<b>Job Hours</b>							
Date	On Location Hours	Operating Hours	Date	On Location Hours	Operating Hours	Date	On Location Hours
10-04-13	10	10					
TOTAL							
Total is the sum of each column separately							
<b>Job</b>				<b>Job Times</b>			
Formation Name				Date	Time	Time Zone	
Formation Depth (MD)	Top	Bottom		Called Out	03 - Oct - 2013	18:00	MST
Form Type	BHST			On Location	04 - Oct - 2013	02:00	MST
Job depth MD	3417 ft			Job Started	04 - Oct - 2013	06:29	MST
Water Depth	2 ft			Job Completed	04 - Oct - 2013	10:23	MST
Perforation Depth (MD)	From	To		Departed Loc	04 - Oct - 2013	12:00	MST
<b>Well Data</b>							
Description	New / Used	Max pressure psig	Size in	ID in	Weight lbm/ft	Thread	Grade
							Top MD ft
							Bottom MD ft
							Top TVD ft
							Bottom TVD ft
<b>Tools and Accessories</b>							
Type	Size	Qty	Make	Depth	Type	Size	Qty
Guide Shoe					Packer		
Float Shoe					Bridge Plug		
Float Collar					Retainer		
Insert Float							
Stage Tool							
					Top Plug		
					Bottom Plug		
					SSR plug set		
					Plug Container	9.625	1
					Centralizers		HES
<b>Miscellaneous Materials</b>							
Gelling Agt		Conc		Surfactant		Conc	
Treatment Fld		Conc		Inhibitor		Conc	
					Acid Type		Qty
					Sand Type		Size
							Conc
							%
<b>Fluid Data</b>							
Stage/Plug #: 1							
Fluid #	Stage Type	Fluid Name	Qty	Qty uom	Mixing Density lbm/gal	Yield ft <sup>3</sup> /sk	Mix Fluid Gal/sk
							Rate bbl/min
							Total Mix Fluid Gal/sk
Stage/Plug #: 1							
Fluid #	Stage Type	Fluid Name	Qty	Qty uom	Mixing Density uom	Yield uom	Mix Fluid uom
							Rate uom
							Total Mix Fluid uom



**HALLIBURTON****Cementing Job Summary**

Stage/Plug #: 1									
Fluid #	Stage Type	Fluid Name	Qty	Qty uom	Mixing Density lbm/gal	Yield ft <sup>3</sup> /sk	Mix Fluid Gal/sk	Rate bbl/min	Total Mix Fluid Gal/sk
1	Fresh Water Spacer		40	bbl	8.33	.0	.0	.0	
2	1st Stage HLC Lead Cement	ECONOCEM (TM) SYSTEM (452992)	605	sacks	12.8	1.77	9.34		9.34
	0.25 lbm	POLY-E-FLAKE (101216940)							
	0.35 %	HR-5, 50 LB SK (100005050)							
	9.34 Gal	FRESH WATER							
3	1st Stage Varicem Tail Cement	VARICEM (TM) CEMENT (452009)	185	sacks	12.8	1.96	10.95		10.95
	0.3 lbm	POLY-E-FLAKE (101216940)							
	10.95 Gal	FRESH WATER							
4	Displacement		262	bbl	8.33	.0	.0	.0	
5	Fresh Water Spacer		22	bbl	8.33	.0	.0	.0	
6	2nd Stage VariCem Cement	VARICEM (TM) CEMENT (452009)	760	sacks	12.8	1.96	10.95		10.95
	0.3 lbm	POLY-E-FLAKE (101216940)							
	10.95 Gal	FRESH WATER							
7	Displacement		101	bbl	8.33	.0	.0	.0	
<b>Calculated Values</b>			<b>Pressures</b>			<b>Volumes</b>			
Displacement	262/101	Shut In: Instant		Lost Returns	YES	Cement Slurry	520	Pad	
Top Of Cement	SURF	5 Min		Cement Returns	NO	Actual Displacement	262/101	Treatment	
Frac Gradient		15 Min		Spacers	62	Load and Breakdown		Total Job	883
<b>Rates</b>									
Circulating	6	Mixing	6	Displacement	8	Avg. Job	7		
Cement Left In Pipe	Amount	28 ft	Reason	Shoe Joint					
Frac Ring # 1 @	ID	Frac ring # 2 @	ID	Frac Ring # 3 @	ID	Frac Ring # 4 @	ID		
The Information Stated Herein Is Correct				Customer Representative Signature 					

*The Road to Excellence Starts with Safety*

Sold To #: 300721	Ship To #: 3107687	Quote #:	Sales Order #: 900795979
Customer: WPX ENERGY ROCKY MOUNTAIN LLC-EBUS	Customer Rep: Ragsdale, Ted		
Well Name: RG	Well #: 331-23-298	API/UWI #:	
Field: SULFUR CREEK	City (SAP): MEEKER	County/Parish: Rio Blanco	State: Colorado
Legal Description:			
Lat:	Long:		
Contractor: Cyclone	Rig/Platform Name/Num: Cyclone 29		
Job Purpose: Cement Multiple Stages	Ticket Amount: \$44,135.83		
Well Type: Development Well	Job Type: Cement Multiple Stages		
Sales Person: MAYO, MARK	Srv Supervisor: DEAN, MARK	MBU ID Emp #: 454214	

Activity Description	Date/Time	Cht #	Rate bbl/min	Volume bbl		Pressure psig		Comments
				Stage	Total	Tubing	Casing	
Call Out	10/03/2013 18:30							Crew Called Out @ 18:30
Pre-Convoy Safety Meeting	10/03/2013 21:30							Discussed Planned Route, Driving in a Blizzard, Chaining Up & Safe Driving. Level 2 Journey.
Depart from Service Center or Other Site	10/03/2013 22:00							Departed Yard in Convoy. Chained up once off of Pavement. RCM Exhaust Stack for Auxiliary & Passenger Side Deck Motors went missing en route.
Arrive at Location from Service Center	10/04/2013 02:00							Pulled Equipment Off the Road to Inspect Site.
Assessment Of Location Safety Meeting	10/04/2013 02:05							Discussed Layout & Spotting Equipment
Pre-Rig Up Safety Meeting	10/04/2013 02:20							Discussed PPE, Red Zones, Working in the Snow & Other Hazards.
Rig-Up Equipment	10/04/2013 02:30							Rigged up Safely to Customer & HES Standards. iCem would not open to Chart. Called IT. Internet Connection Too Slow to solve.
Pre-Job Safety Meeting	10/04/2013 06:00							Discussed Job Procedure & Safety Concerns with Customer & Crew
Test Lines	10/04/2013 06:33							Tested Lines to 3000 psi (Pressure Held)
Pump Water	10/04/2013 06:40		5	20			200.0	Pumped 20 BBL Water Ahead.

Sold To #: 300721

Ship To #: 3107687

Quote #:

Sales Order #: 900795979

SUMMIT Version: 7.3.0106

Friday, October 04, 2013 12:15:00



## Cementing Job Log

Activity Description	Date/Time	Cht #	Rate bbl/min	Volume bbl		Pressure psig		Comments
				Stage	Total	Tubing	Casing	
Shutdown	10/04/2013 06:45							Shutdown. Displacement Tank Valve Frozen.
Pump Water	10/04/2013 06:49		5	20			200.0	Put Alcohol in Air Lines & Continued Pumping. (Valve Fixed)
Pump Lead Cement	10/04/2013 06:54		5	10			230.0	Pumped 10 BBL Lead CMT could not maintain Delivery.
Shutdown	10/04/2013 07:00							Product Line Packed Off. Disconnected, and Emptied Line. Shutdown 10 Minutes Total.
Pump 1st Stage Lead Slurry	10/04/2013 07:10		5	190.7			230.0	Continued Pumping. Pumped 190.7 BBL Total 1st Stage Lead CMT @ D: 12.8# Y: 1.77 W: 9.34 (605 sks)
Pump 1st Stage Tail Slurry	10/04/2013 07:41		5	64.5			200.0	Pumped 64.5 BBL Tail CMT @ D: 12.8# Y: 1.96 W: 10.95 (185 sks)
Shutdown	10/04/2013 07:53							Shutdown to Drop 1st Stage Plug.
Drop Plug	10/04/2013 07:57							Tattle Tell Opened. (Plug successfully Launched)
Clean Lines	10/04/2013 08:00							Washed up on Top of Plug with first 10 BBL of Displacement.
Pump Displacement	10/04/2013 08:00		8	262			230.0	Pumped 262 BBL of Fresh Water Displacement
Slow Rate	10/04/2013 08:12		2	93			20.0	Slowed Rate to 2 BPM @ 93 BBL Gone for 20 BBL to clear DV Tool.
Other	10/04/2013 08:32		8	113			230.0	Picked Rate back up to 8 BPM.
Other	10/04/2013 08:41		8	180			500.0	Lost Returns @ 180 BBL Away. Did not Regain. Customer did not want to slow rate.
Slow Rate	10/04/2013 08:50		3	250			375.0	Slowed rate to 3 BPM to Land Plug.
Bump Plug	10/04/2013 08:51		3	262			400.0	Bumped 1st Stage Plug @ 400psi. 500 psi over to 900psi
Check Floats	10/04/2013 08:53							1 BBL back to Truck

Sold To #: 300721

Ship To #: 3107687

Quote #:

Sales Order #: 900795979

SUMMIT Version: 7.3.0106

Friday, October 04, 2013 12:15:00

## Cementing Job Log

Activity Description	Date/Time	Cht #	Rate bbl/min	Volume bbl		Pressure psig		Comments
				Stage	Total	Tubing	Casing	
Drop Opening Device For Multiple Stage Cementer	10/04/2013 08:55							Dropped Opening Device and let Freefall for 10 minutes. Pre Loaded 2nd Stage Plug.
Open Multiple Stage Cementer	10/04/2013 09:11		1	1			670.0	Tool Opened @ 670 psi.
Circulate Well	10/04/2013 09:11		6	22			180.0	Circulated 22 BBL of Fresh Water through tool. Weighed up 2nd Stage CMT.
Returns To Surface	10/04/2013 09:14		6	15			160.0	Returns back to Surface @ 15 BBL Gone.
Pump 2nd Stage Tail Slurry	10/04/2013 09:17		6	265			300.0	Pumped 265 BBL of 2nd Stage Tail CMT @ D: 12.8# Y: 1.96 W: 10.95 (760 sks)
Returns To Surface	10/04/2013 09:44		6	156			260.0	Water Returns to Surface from 1st Stage Spacer @ 156 BBL Away. Cement from 1st Stage did not Return to Surface.
Other	10/04/2013 09:52		6	230			200.0	Lost Returns @ 230 BBL Away. Never Regained.
Shutdown	10/04/2013 10:01							Shutdown to Drop 2nd Stage Plug.
Drop Plug	10/04/2013 10:02							Tattle Tell Opened. (Closing Plug successfully Launched)
Pump Displacement	10/04/2013 10:03		8	101			325.0	Pumped 101 BBL Fresh Water Displacement.
Slow Rate	10/04/2013 10:16		3	90			125.0	Slowed to 3BPM to Land Plug.
Bump Plug	10/04/2013 10:19		3	101			150.0	Bumped Plug @ 150 psi. Pressured over to 1400psi.
Close Multiple Stage Cementer	10/04/2013 10:21							Bled Pressure & Pressured back up to 1600psi to Close Tool.
Check Floats	10/04/2013 10:23							Checked Floats. 1 BBL back to Truck. Floats Held.
Pre-Rig Down Safety Meeting	10/04/2013 10:25							Discussed Trapped Pressure, Overhead Loads, & Other Hazards.
Rig-Down Equipment	10/04/2013 10:35							Rigged Down Safely to Customer & HES Standards.

Sold To #: 300721

Ship To #: 3107687

Quote #:

Sales Order #: 900795979

SUMMIT Version: 7.3.0106

Friday, October 04, 2013 12:15:00



# HALLIBURTON

## Cementing Job Log

Activity Description	Date/Time	Cht #	Rate bbl/ min	Volume bbl		Pressure psig		Comments
				Stage	Total	Tubing	Casing	
Pre-Convoy Safety Meeting	10/04/2013 12:15							Discussed Safe Driving and Chaining Down.
Depart Location for Service Center or Other Site	10/04/2013 12:30							Thankyou for Chosing Halliburton!

Sold To #: 300721

Ship To #: 3107687

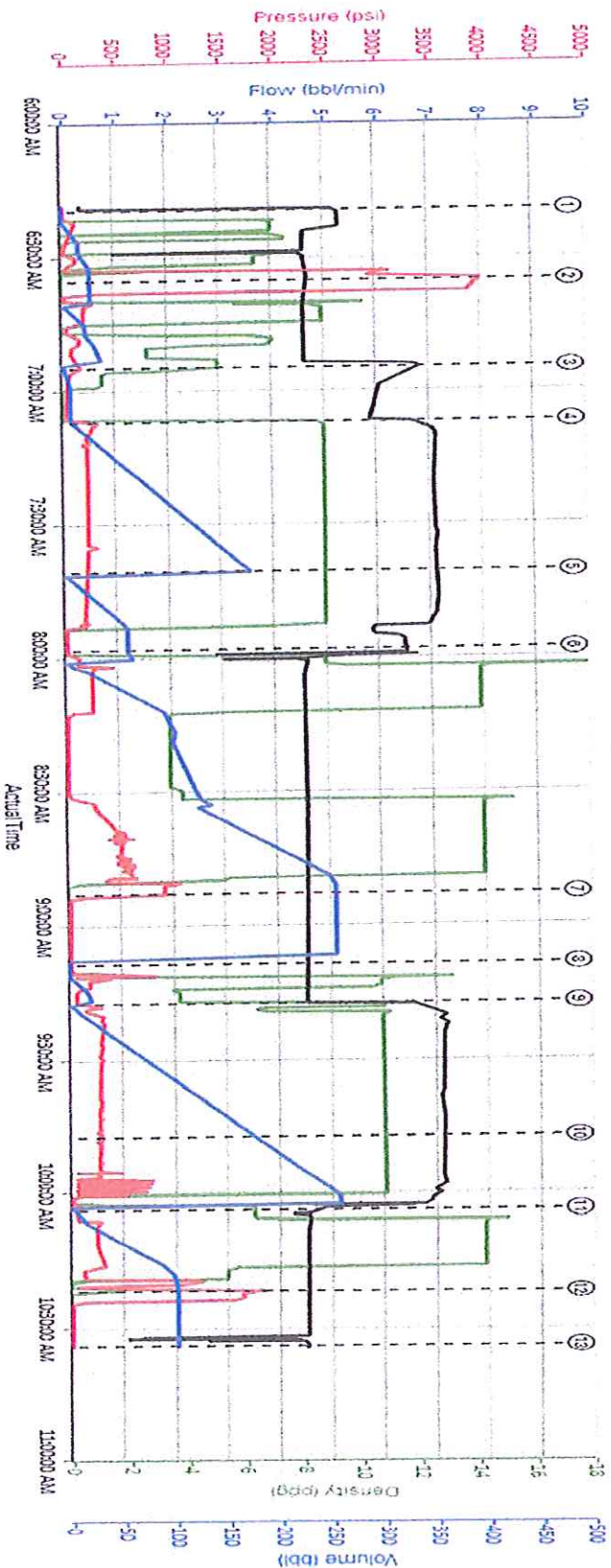
Quote #:

Sales Order #: 900795979

SUMMIT Version: 7.3.0106

Friday, October 04, 2013 12:15:00

# WPX Multi-Stage Surface RG 331-23-298



Rate (bbl/min)	Density (ppg)	DS Pump Pres (psi)	Stage Total (bbl)
① Start Job 0.9:53:20 63.0.14	② Shift Tool Circulate Backside Open 0.8:21:27 18.215.7	③ Pump 1st Stage Lead Slurry 0.9:12:23:28 22.12.76	④ End Job 0.8:15:02 101.85
⑤ Test Lines 0.8:44:38 06.27.19	⑥ Pump Spacer 1 0.8:27:15 02.0	⑦ Pump 2nd Stage Lead Slurry 0.9:12:23:28 22.12.76	
⑧ Pump Speed 0.1:12:05:13 52.5.29	⑨ Pump Multiple Stage Cementer 0.8:22:16 6.91.101.85	⑩ Pump Displacement 2 0.8:32:52 43.5.97	
⑪ Pump 1st Stage Tail Slurry 0.9:12:23:28 22.12.76			
⑫ Drop Ball 0.1:15:19.7 60.28			

Created: 01/10/2014 14:57:28, Version: 2.0.501 Edit

Customer: WPX ENERGY ROCKY MOUNTAIN LLC  
EBUS  
Representative: Mark Dean

Job Date: 10/4/2013 6:17:44 AM  
Sales Order #: 900755979

Well: RG 331-23-298