

Location:	COLORADO	Slot:	SLOT#05 ELLIOTT 5C-18HZ (2040'FNL & 487'FEL, SEC.18)
Field:	WELD COUNTY (KERR MCGEE)	Well:	ELLIOTT 5C-18HZ
Facility:	SEC.18-T3N-R67W	Wellbore:	ELLIOTT 5C-18HZ PWB

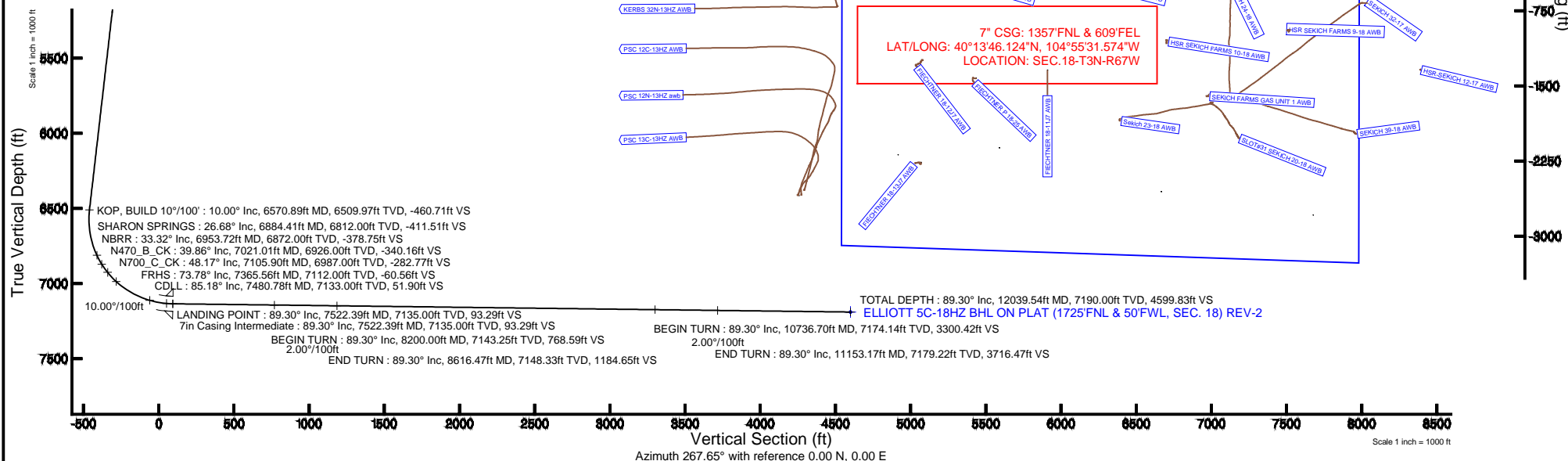
Location:	COLORADO	Slot:	SLOT#05 ELLIOTT 5C-18HZ (2040'FNL & 487'FEL, SEC.18)
Field:	WELD COUNTY (KERR MCGEE)	Well:	ELLIOTT 5C-18HZ
Facility:	SEC.18-T3N-R67W	Wellbore:	ELLIOTT 5C-18HZ PWB

Plot reference wellpath is ELLIOTT 5C-18HZ (REV-A.0) PWP

True vertical depths are referenced to ENSIGN 138 (RKB)	Grid System: NAD83 / Lambert Colorado SP, Northern Zone (501), US feet
Measured depths are referenced to ENSIGN 138 (RKB)	North Reference: True north
ENSIGN 138 (RKB) to Mean Sea Level: 4835 feet	Scale: True distance
Mean Sea Level to Mud line (At Slot: SLOTR05 ELLIOTT 5C-18HZ [2040FNL & 487FEL, SEC.18]): 0 feet	Depths are in feet
Coordinates are in feet referenced to SLOT	Created by: wilsje02 on 3/17/2014

Facility Name			Grid East (US ft)	Grid North (US ft)	Latitude	Longitude
SEC.18-T3N-R67W			3157784.270	1326430.670	40°13'41.052"N	104°56'05.640"W
Slot	Local N (ft)	Local E (ft)	Grid East (US ft)	Grid North (US ft)	Latitude	Longitude
SLOT#05 ELLIOTT 5C-18HZ (2040FNL & 487FEL, SEC.18)	-172.48	2763.85	3160549.038	1326275.810	40°13'39.346"N	104°55'30.007"W
ENSIGN 138 (RKB) to Mud line (At Slot: SLOT#05 ELLIOTT 5C-18HZ (2040FNL & 487FEL, SEC.18))					4835ft	
Mean Sea Level to Mud line (At Slot: SLOT#05 ELLIOTT 5C-18HZ (2040FNL & 487FEL, SEC.18))					0ft	
ENSIGN 138 (RKB) to Mean Sea Level					4835ft	

Name	MD (ft)	TWD (ft)	Local E (ft)	Local E (ft)	Grid East (GDS ft)	Grid North (GDS ft)	Latitude	Longitude
ELLIOTT SE-16N2 SHL ON PLAT (1855FAL & 50FPL, SEC. 16) REV-2	7195.0	571.25	-462.26	0.00	315551.31	312881.04	40°13'44.967N	104°56'28.627W
ELLIOTT SE-16N2 SHL ON PLAT (1725FAL & 50FPL, SEC. 16) REV-2	12035.04	7195.0	501.25	-462.26	315551.31	312847.04	40°13'44.225N	104°56'28.627W
ELLIOTT KARL UNIL 1 (27R RADUS)	7195.0	491.62	-526.83	0.00	316054.14	312976.58	40°13'44.205N	104°56'41.956W
ELLIOTT SE-16N2 LAND BOX	7200.0	0.00	0.00	0.00	316054.69	312975.81	40°13'39.346N	104°56'30.007W
ELLIOTT KARL UNIL 1 (200R RADUS)	7201.78	491.78	-526.77	0.00	316054.14	312976.55	40°13'44.205N	104°56'41.956W
ELLIOTT SE-16N2 SECTION 18 LINES	7210.00	0.00	0.00	0.00	316054.69	312975.81	40°13'39.346N	104°56'30.007W





# Planned Wellpath Report

ELLIOTT 5C-18HZ (REV-A.0) PWP

Page 1 of 6



## REFERENCE WELLPATH IDENTIFICATION

Operator	KERR-MCGEE OIL & GAS ONSHORE LP	Slot	SLOT#05 ELLIOTT 5C-18HZ (2040'FNL & 487'FEL, SEC.18)
Area	COLORADO	Well	ELLIOTT 5C-18HZ
Field	WELD COUNTY (KERR MCGEE)	Wellbore	ELLIOTT 5C-18HZ PWB
Facility	SEC.18-T3N-R67W		

## REPORT SETUP INFORMATION

Projection System	NAD83 / Lambert Colorado SP, Northern Zone (501), US feet	Software System	WellArchitect® 4.0.0
North Reference	True	User	Wilsjef02
Scale	0.999957	Report Generated	3/17/2014 at 08:53:17
Convergence at slot	n/a	Database/Source file	WellArchitectDB/ELLIOTT_5C-18HZ_PWB.xml

## WELLPATH LOCATION

	Local coordinates		Grid coordinates		Geographic coordinates	
	North[ft]	East[ft]	Easting[US ft]	Northing[US ft]	Latitude	Longitude
Slot Location	-172.48	2763.85	3160549.04	1326275.81	40°13'39.346"N	104°55'30.007"W
Facility Reference Pt			3157784.27	1326430.67	40°13'41.052"N	104°56'05.640"W
Field Reference Pt			3197771.84	1268891.29	40°04'09.600"N	104°47'36.000"W

## WELLPATH DATUM

Calculation method	Minimum curvature	ENSIGN 138 (RKB) to Installation Vertical Datum	4835.00ft
Horizontal Reference Pt	Slot	ENSIGN 138 (RKB) to Mean Sea Level	4835.00ft
Vertical Reference Pt	ENSIGN 138 (RKB)	ENSIGN 138 (RKB) to Mud Line at Slot (SLOT#05 ELLIOTT 5C-18HZ (2040'FNL & 487'FEL, SEC.18))	4835.00ft
MD Reference Pt	ENSIGN 138 (RKB)	Section Origin	N 0.00, E 0.00 ft
Field Vertical Reference	Mean Sea Level	Section Azimuth	267.65°



# Planned Wellpath Report

ELLIOTT 5C-18HZ (REV-A.0) PWP

Page 2 of 6



## REFERENCE WELLPATH IDENTIFICATION

Operator	KERR-MCGEE OIL & GAS ONSHORE LP	Slot	SLOT#05 ELLIOTT 5C-18HZ (2040'FNL & 487'FEL, SEC.18)
Area	COLORADO	Well	ELLIOTT 5C-18HZ
Field	WELD COUNTY (KERR MCGEE)	Wellbore	ELLIOTT 5C-18HZ PWB
Facility	SEC.18-T3N-R67W		

## WELLPATH DATA (139 stations) † = interpolated/extrapolated station

MD [ft]	Inclination [°]	Azimuth [°]	TVD [ft]	Vert Sect [ft]	North [ft]	East [ft]	Latitude	Longitude	DLS [°/100ft]	Comments
0.00†	0.000	0.010	0.00	0.00	0.00	0.00	40°13'39.346"N	104°55'30.007"W	0.00	
13.00	0.000	0.010	13.00	0.00	0.00	0.00	40°13'39.346"N	104°55'30.007"W	0.00	TIE-ON
113.00	0.530	0.010	113.00	-0.02	0.46	0.00	40°13'39.351"N	104°55'30.007"W	0.53	BEGIN GYRO SURVEYS
213.00	0.440	353.390	212.99	-0.01	1.31	-0.04	40°13'39.359"N	104°55'30.008"W	0.11	
313.00	0.340	342.370	312.99	0.10	1.97	-0.18	40°13'39.365"N	104°55'30.009"W	0.12	
413.00	0.330	323.060	412.99	0.34	2.48	-0.44	40°13'39.371"N	104°55'30.013"W	0.11	
513.00	0.580	324.840	512.99	0.78	3.13	-0.91	40°13'39.377"N	104°55'30.019"W	0.25	
613.00	0.440	348.490	612.98	1.11	3.92	-1.27	40°13'39.385"N	104°55'30.023"W	0.25	
713.00	0.340	337.160	712.98	1.28	4.57	-1.47	40°13'39.391"N	104°55'30.026"W	0.13	
813.00	0.320	299.790	812.98	1.62	4.98	-1.82	40°13'39.395"N	104°55'30.031"W	0.21	
913.00	0.300	348.390	912.98	1.90	5.37	-2.12	40°13'39.399"N	104°55'30.034"W	0.26	
993.00	0.480	7.250	992.98	1.87	5.91	-2.12	40°13'39.404"N	104°55'30.034"W	0.27	TIE-INTO GYROS
1093.00†	0.480	7.250	1092.97	1.73	6.74	-2.01	40°13'39.413"N	104°55'30.033"W	0.00	
1193.00†	0.480	7.250	1192.97	1.59	7.57	-1.91	40°13'39.421"N	104°55'30.032"W	0.00	
1293.00†	0.480	7.250	1292.97	1.45	8.41	-1.80	40°13'39.429"N	104°55'30.030"W	0.00	
1393.00†	0.480	7.250	1392.96	1.31	9.24	-1.69	40°13'39.437"N	104°55'30.029"W	0.00	
1493.00†	0.480	7.250	1492.96	1.18	10.07	-1.59	40°13'39.445"N	104°55'30.027"W	0.00	
1593.00†	0.480	7.250	1592.96	1.04	10.90	-1.48	40°13'39.454"N	104°55'30.026"W	0.00	
1693.00†	0.480	7.250	1692.95	0.90	11.73	-1.38	40°13'39.462"N	104°55'30.025"W	0.00	
1793.00†	0.480	7.250	1792.95	0.76	12.56	-1.27	40°13'39.470"N	104°55'30.023"W	0.00	
1893.00†	0.480	7.250	1892.95	0.62	13.39	-1.17	40°13'39.478"N	104°55'30.022"W	0.00	
1993.00†	0.480	7.250	1992.94	0.48	14.22	-1.06	40°13'39.487"N	104°55'30.021"W	0.00	
2093.00†	0.480	7.250	2092.94	0.34	15.05	-0.95	40°13'39.495"N	104°55'30.019"W	0.00	
2193.00†	0.480	7.250	2192.93	0.20	15.88	-0.85	40°13'39.503"N	104°55'30.018"W	0.00	
2253.07	0.480	7.250	2253.00	0.11	16.38	-0.79	40°13'39.508"N	104°55'30.017"W	0.00	BEGIN NUDGE
2293.00†	1.231	27.603	2292.93	-0.13	16.93	-0.57	40°13'39.513"N	104°55'30.014"W	2.00	
2393.00†	3.214	35.079	2392.85	-2.37	20.18	1.54	40°13'39.545"N	104°55'29.987"W	2.00	
2493.00†	5.210	36.843	2492.57	-6.94	26.10	5.88	40°13'39.604"N	104°55'29.931"W	2.00	
2593.00†	7.208	37.632	2591.98	-13.84	34.71	12.43	40°13'39.689"N	104°55'29.847"W	2.00	
2693.00†	9.207	38.079	2690.95	-23.06	45.98	21.20	40°13'39.800"N	104°55'29.734"W	2.00	
2732.64	10.000	38.207	2730.04	-27.36	51.18	25.28	40°13'39.852"N	104°55'29.681"W	2.00	END NUDGE
2793.00†	10.000	38.207	2789.48	-34.17	59.41	31.76	40°13'39.933"N	104°55'29.597"W	0.00	
2893.00†	10.000	38.207	2887.96	-45.46	73.06	42.51	40°13'40.068"N	104°55'29.459"W	0.00	
2993.00†	10.000	38.207	2986.44	-56.75	86.70	53.25	40°13'40.203"N	104°55'29.321"W	0.00	
3093.00†	10.000	38.207	3084.92	-68.04	100.35	63.99	40°13'40.338"N	104°55'29.182"W	0.00	
3193.00†	10.000	38.207	3183.40	-79.34	113.99	74.73	40°13'40.472"N	104°55'29.044"W	0.00	
3293.00†	10.000	38.207	3281.88	-90.63	127.64	85.47	40°13'40.607"N	104°55'28.905"W	0.00	
3393.00†	10.000	38.207	3380.36	-101.92	141.28	96.21	40°13'40.742"N	104°55'28.767"W	0.00	
3493.00†	10.000	38.207	3478.84	-113.21	154.93	106.95	40°13'40.877"N	104°55'28.628"W	0.00	
3541.90†	10.000	38.207	3527.00	-118.73	161.60	112.20	40°13'40.943"N	104°55'28.560"W	0.00	PARKMAN
3593.00†	10.000	38.207	3577.33	-124.50	168.57	117.69	40°13'41.012"N	104°55'28.490"W	0.00	
3693.00†	10.000	38.207	3675.81	-135.79	182.22	128.43	40°13'41.147"N	104°55'28.351"W	0.00	
3793.00†	10.000	38.207	3774.29	-147.08	195.86	139.17	40°13'41.281"N	104°55'28.213"W	0.00	
3893.00†	10.000	38.207	3872.77	-158.37	209.51	149.91	40°13'41.416"N	104°55'28.074"W	0.00	
3993.00†	10.000	38.207	3971.25	-169.66	223.15	160.65	40°13'41.551"N	104°55'27.936"W	0.00	



# Planned Wellpath Report

ELLIOTT 5C-18HZ (REV-A.0) PWP

Page 3 of 6



## REFERENCE WELLPATH IDENTIFICATION

Operator	KERR-MCGEE OIL & GAS ONSHORE LP	Slot	SLOT#05 ELLIOTT 5C-18HZ (2040'FNL & 487'FEL, SEC.18)
Area	COLORADO	Well	ELLIOTT 5C-18HZ
Field	WELD COUNTY (KERR MCGEE)	Wellbore	ELLIOTT 5C-18HZ PWB
Facility	SEC.18-T3N-R67W		

## WELLPATH DATA (139 stations) † = interpolated/extrapolated station

MD [ft]	Inclination [°]	Azimuth [°]	TVD [ft]	Vert Sect [ft]	North [ft]	East [ft]	Latitude	Longitude	DLS [°/100ft]	Comments
4002.90†	10.000	38.207	3981.00	-170.78	224.50	161.71	40°13'41.565"N	104°55'27.922"W	0.00	SUSSEX
4093.00†	10.000	38.207	4069.73	-180.95	236.80	171.39	40°13'41.686"N	104°55'27.797"W	0.00	
4193.00†	10.000	38.207	4168.21	-192.24	250.44	182.13	40°13'41.821"N	104°55'27.659"W	0.00	
4293.00†	10.000	38.207	4266.69	-203.53	264.09	192.87	40°13'41.956"N	104°55'27.520"W	0.00	
4393.00†	10.000	38.207	4365.17	-214.82	277.73	203.61	40°13'42.091"N	104°55'27.382"W	0.00	
4493.00†	10.000	38.207	4463.65	-226.11	291.38	214.35	40°13'42.225"N	104°55'27.243"W	0.00	
4593.00†	10.000	38.207	4562.13	-237.40	305.02	225.09	40°13'42.360"N	104°55'27.105"W	0.00	
4693.00†	10.000	38.207	4660.61	-248.69	318.67	235.83	40°13'42.495"N	104°55'26.967"W	0.00	
4793.00†	10.000	38.207	4759.09	-259.98	332.31	246.57	40°13'42.630"N	104°55'26.828"W	0.00	
4893.00†	10.000	38.207	4857.58	-271.27	345.96	257.31	40°13'42.765"N	104°55'26.690"W	0.00	
4993.00†	10.000	38.207	4956.06	-282.56	359.60	268.05	40°13'42.900"N	104°55'26.551"W	0.00	
5093.00†	10.000	38.207	5054.54	-293.85	373.25	278.79	40°13'43.034"N	104°55'26.413"W	0.00	
5193.00†	10.000	38.207	5153.02	-305.14	386.89	289.53	40°13'43.169"N	104°55'26.274"W	0.00	
5293.00†	10.000	38.207	5251.50	-316.43	400.54	300.27	40°13'43.304"N	104°55'26.136"W	0.00	
5393.00†	10.000	38.207	5349.98	-327.72	414.18	311.01	40°13'43.439"N	104°55'25.997"W	0.00	
5493.00†	10.000	38.207	5448.46	-339.02	427.83	321.75	40°13'43.574"N	104°55'25.859"W	0.00	
5593.00†	10.000	38.207	5546.94	-350.31	441.47	332.49	40°13'43.709"N	104°55'25.720"W	0.00	
5693.00†	10.000	38.207	5645.42	-361.60	455.12	343.23	40°13'43.843"N	104°55'25.582"W	0.00	
5793.00†	10.000	38.207	5743.90	-372.89	468.76	353.97	40°13'43.978"N	104°55'25.443"W	0.00	
5893.00†	10.000	38.207	5842.38	-384.18	482.41	364.71	40°13'44.113"N	104°55'25.305"W	0.00	
5993.00†	10.000	38.207	5940.86	-395.47	496.05	375.45	40°13'44.248"N	104°55'25.166"W	0.00	
6093.00†	10.000	38.207	6039.34	-406.76	509.70	386.19	40°13'44.383"N	104°55'25.028"W	0.00	
6193.00†	10.000	38.207	6137.83	-418.05	523.34	396.93	40°13'44.518"N	104°55'24.889"W	0.00	
6293.00†	10.000	38.207	6236.31	-429.34	536.99	407.67	40°13'44.652"N	104°55'24.751"W	0.00	
6393.00†	10.000	38.207	6334.79	-440.63	550.63	418.41	40°13'44.787"N	104°55'24.612"W	0.00	
6493.00†	10.000	38.207	6433.27	-451.92	564.28	429.15	40°13'44.922"N	104°55'24.474"W	0.00	
6570.89	10.000	38.207	6509.97	-460.71	574.90	437.52	40°13'45.027"N	104°55'24.366"W	0.00	KOP, BUILD 10°/100'
6593.00†	8.896	26.495	6531.79	-462.79	577.94	439.47	40°13'45.057"N	104°55'24.341"W	10.00	
6693.00†	10.300	323.971	6630.63	-461.56	592.13	437.66	40°13'45.197"N	104°55'24.364"W	10.00	
6793.00†	18.212	297.933	6727.57	-443.06	606.72	418.54	40°13'45.341"N	104°55'24.611"W	10.00	
6884.41†	26.677	288.730	6812.00	-411.51	620.02	386.42	40°13'45.473"N	104°55'25.025"W	10.00	SHARON SPRINGS
6893.00†	27.493	288.144	6819.65	-407.85	621.26	382.71	40°13'45.485"N	104°55'25.073"W	10.00	
6953.72†	33.322	284.766	6872.00	-378.75	629.88	353.23	40°13'45.570"N	104°55'25.453"W	10.00	NBRR
6993.00†	37.130	283.094	6904.08	-357.01	635.32	331.25	40°13'45.624"N	104°55'25.736"W	10.00	
7021.01†	39.858	282.072	6926.00	-340.16	639.11	314.23	40°13'45.662"N	104°55'25.956"W	10.00	N470_B_CK
7093.00†	46.902	279.904	6978.29	-292.08	648.47	265.72	40°13'45.754"N	104°55'26.581"W	10.00	
7105.90†	48.168	279.569	6987.00	-282.77	650.08	256.34	40°13'45.770"N	104°55'26.702"W	10.00	N700_C_CK
7193.00†	56.738	277.601	7040.04	-215.02	660.31	188.12	40°13'45.871"N	104°55'27.582"W	10.00	
7293.00†	66.608	275.769	7087.43	-128.19	670.48	100.80	40°13'45.972"N	104°55'28.707"W	10.00	
7365.56†	73.781	274.609	7112.00	-60.56	676.64	32.86	40°13'46.032"N	104°55'29.583"W	10.00	FRHS
7393.00†	76.496	274.194	7119.04	-34.22	678.67	6.41	40°13'46.053"N	104°55'29.924"W	10.00	
7480.78†	85.184	272.919	7133.00	51.90	684.03	-80.00	40°13'46.106"N	104°55'31.038"W	10.00	CDLL
7493.00†	86.393	272.746	7133.90	64.03	684.63	-92.17	40°13'46.111"N	104°55'31.195"W	10.00	
7522.39	89.302	272.330	7135.00	93.29	685.93	-121.51	40°13'46.124"N	104°55'31.574"W	10.00	LANDING POINT
7593.00†	89.303	272.330	7135.86	163.66	688.80	-192.05	40°13'46.153"N	104°55'32.483"W	0.00	



# Planned Wellpath Report

ELLIOTT 5C-18HZ (REV-A.0) PWP

Page 4 of 6



## REFERENCE WELLPATH IDENTIFICATION

Operator	KERR-MCGEE OIL & GAS ONSHORE LP	Slot	SLOT#05 ELLIOTT 5C-18HZ (2040'FNL & 487'FEL, SEC.18)
Area	COLORADO	Well	ELLIOTT 5C-18HZ
Field	WELD COUNTY (KERR MCGEE)	Wellbore	ELLIOTT 5C-18HZ PWB
Facility	SEC.18-T3N-R67W		

## WELLPATH DATA (139 stations) † = interpolated/extrapolated station

MD [ft]	Inclination [°]	Azimuth [°]	TVD [ft]	Vert Sect [ft]	North [ft]	East [ft]	Latitude	Longitude	DLS [°/100ft]	Comments
7693.00†	89.303	272.330	7137.08	263.32	692.87	-291.96	40°13'46.193"N	104°55'33.771"W	0.00	
7793.00†	89.302	272.330	7138.30	362.98	696.93	-391.87	40°13'46.233"N	104°55'35.059"W	0.00	
7893.00†	89.303	272.330	7139.51	462.64	701.00	-491.78	40°13'46.273"N	104°55'36.348"W	0.00	
7993.00†	89.302	272.330	7140.73	562.30	705.06	-591.69	40°13'46.313"N	104°55'37.636"W	0.00	
8093.00†	89.303	272.330	7141.95	661.96	709.13	-691.60	40°13'46.353"N	104°55'38.924"W	0.00	
8193.00†	89.302	272.330	7143.16	761.62	713.19	-791.51	40°13'46.394"N	104°55'40.212"W	0.00	
8200.00	89.302	272.330	7143.25	768.59	713.48	-798.51	40°13'46.396"N	104°55'40.302"W	0.00	BEGIN TURN
8293.00†	89.301	270.470	7144.38	861.38	715.75	-891.47	40°13'46.419"N	104°55'41.501"W	2.00	
8393.00†	89.301	268.470	7145.60	961.32	714.82	-991.45	40°13'46.410"N	104°55'42.790"W	2.00	
8493.00†	89.301	266.470	7146.82	1061.31	710.41	-1091.34	40°13'46.366"N	104°55'44.078"W	2.00	
8593.00†	89.302	264.469	7148.04	1161.22	702.51	-1191.02	40°13'46.288"N	104°55'45.363"W	2.00	
8616.47	89.302	264.000	7148.33	1184.65	700.16	-1214.37	40°13'46.265"N	104°55'45.664"W	2.00	END TURN
8693.00†	89.302	264.000	7149.26	1261.02	692.16	-1290.47	40°13'46.186"N	104°55'46.645"W	0.00	
8793.00†	89.302	264.000	7150.48	1360.81	681.70	-1389.92	40°13'46.082"N	104°55'47.927"W	0.00	
8893.00†	89.303	264.000	7151.69	1460.60	671.25	-1489.36	40°13'45.979"N	104°55'49.209"W	0.00	
8993.00†	89.302	264.000	7152.91	1560.39	660.80	-1588.81	40°13'45.875"N	104°55'50.491"W	0.00	
9093.00†	89.303	264.000	7154.13	1660.18	650.35	-1688.25	40°13'45.772"N	104°55'51.773"W	0.00	
9193.00†	89.303	264.000	7155.35	1759.97	639.90	-1787.70	40°13'45.669"N	104°55'53.056"W	0.00	
9293.00†	89.302	264.000	7156.56	1859.76	629.44	-1887.14	40°13'45.565"N	104°55'54.338"W	0.00	
9393.00†	89.303	264.000	7157.78	1959.55	618.99	-1986.59	40°13'45.462"N	104°55'55.620"W	0.00	
9493.00†	89.302	264.000	7159.00	2059.34	608.54	-2086.03	40°13'45.359"N	104°55'56.902"W	0.00	
9593.00†	89.302	264.000	7160.22	2159.13	598.09	-2185.48	40°13'45.255"N	104°55'58.184"W	0.00	
9693.00†	89.303	264.000	7161.43	2258.92	587.64	-2284.92	40°13'45.152"N	104°55'59.466"W	0.00	
9793.00†	89.302	264.000	7162.65	2358.70	577.18	-2384.37	40°13'45.049"N	104°56'00.748"W	0.00	
9893.00†	89.303	264.000	7163.87	2458.49	566.73	-2483.81	40°13'44.945"N	104°56'02.030"W	0.00	
9993.00†	89.303	264.000	7165.09	2558.28	556.28	-2583.25	40°13'44.842"N	104°56'03.312"W	0.00	
10093.00†	89.302	264.000	7166.30	2658.07	545.83	-2682.70	40°13'44.738"N	104°56'04.595"W	0.00	
10193.00†	89.303	264.000	7167.52	2757.86	535.38	-2782.14	40°13'44.635"N	104°56'05.877"W	0.00	
10293.00†	89.302	264.000	7168.74	2857.65	524.92	-2881.59	40°13'44.532"N	104°56'07.159"W	0.00	
10393.00†	89.302	264.000	7169.95	2957.44	514.47	-2981.03	40°13'44.428"N	104°56'08.441"W	0.00	
10493.00†	89.303	264.000	7171.17	3057.23	504.02	-3080.48	40°13'44.325"N	104°56'09.723"W	0.00	
10593.00†	89.302	264.000	7172.39	3157.02	493.57	-3179.92	40°13'44.221"N	104°56'11.005"W	0.00	
10693.00†	89.303	264.000	7173.61	3256.81	483.11	-3279.37	40°13'44.118"N	104°56'12.287"W	0.00	
10736.70	89.302	264.000	7174.14	3300.42	478.55	-3322.82	40°13'44.073"N	104°56'12.847"W	0.00	BEGIN TURN
10793.00†	89.302	265.126	7174.82	3356.63	473.21	-3378.87	40°13'44.020"N	104°56'13.570"W	2.00	
10893.00†	89.301	267.126	7176.04	3456.59	466.46	-3478.63	40°13'43.953"N	104°56'14.856"W	2.00	
10993.00†	89.301	269.126	7177.26	3556.57	463.19	-3578.56	40°13'43.921"N	104°56'16.145"W	2.00	
11093.00†	89.302	271.127	7178.48	3656.46	463.41	-3678.55	40°13'43.923"N	104°56'17.434"W	2.00	
11153.17	89.302	272.330	7179.22	3716.47	465.22	-3738.68	40°13'43.941"N	104°56'18.209"W	2.00	END TURN
11193.00†	89.303	272.330	7179.70	3756.17	466.84	-3778.48	40°13'43.956"N	104°56'18.722"W	0.00	
11293.00†	89.303	272.330	7180.92	3855.83	470.91	-3878.39	40°13'43.996"N	104°56'20.010"W	0.00	
11393.00†	89.303	272.330	7182.14	3955.49	474.97	-3978.30	40°13'44.036"N	104°56'21.298"W	0.00	
11493.00†	89.303	272.330	7183.35	4055.15	479.04	-4078.21	40°13'44.077"N	104°56'22.586"W	0.00	
11593.00†	89.303	272.330	7184.57	4154.81	483.10	-4178.12	40°13'44.117"N	104°56'23.875"W	0.00	
11693.00†	89.303	272.329	7185.79	4254.47	487.17	-4278.03	40°13'44.156"N	104°56'25.163"W	0.00	





# Planned Wellpath Report

ELLIOTT 5C-18HZ (REV-A.0) PWP

Page 5 of 6



REFERENCE WELLPATH IDENTIFICATION			
Operator	KERR-MCGEE OIL & GAS ONSHORE LP	Slot	SLOT#05 ELLIOTT 5C-18HZ (2040'FNL & 487'FEL, SEC.18)
Area	COLORADO	Well	ELLIOTT 5C-18HZ
Field	WELD COUNTY (KERR MCGEE)	Wellbore	ELLIOTT 5C-18HZ PWB
Facility	SEC.18-T3N-R67W		

WELLPATH DATA (139 stations) † = interpolated/extrapolated station										
MD [ft]	Inclination [°]	Azimuth [°]	TVD [ft]	Vert Sect [ft]	North [ft]	East [ft]	Latitude	Longitude	DLS [°/100ft]	Comments
11793.00†	89.303	272.329	7187.00	4354.13	491.23	-4377.94	40°13'44.196"N	104°56'26.451"W	0.00	
11893.00†	89.303	272.329	7188.22	4453.79	495.29	-4477.85	40°13'44.236"N	104°56'27.739"W	0.00	
11993.00†	89.303	272.329	7189.43	4553.45	499.36	-4577.76	40°13'44.276"N	104°56'29.027"W	0.00	
12039.54	89.303	272.329	7190.00 <sup>1</sup>	4599.83	501.25	-4624.26	40°13'44.295"N	104°56'29.627"W	0.00	TOTAL DEPTH

HOLE & CASING SECTIONS - Ref Wellbore: ELLIOTT 5C-18HZ PWB Ref Wellpath: ELLIOTT 5C-18HZ (REV-A.0) PWP									
String/Diameter	Start MD [ft]	End MD [ft]	Interval [ft]	Start TVD [ft]	End TVD [ft]	Start N/S [ft]	Start E/W [ft]	End N/S [ft]	End E/W [ft]
13.5in Open Hole	13.00	1066.00	1053.00	13.00	1065.97	0.00	0.00	6.52	-2.04
9.625in Casing Surface	13.00	1066.00	1053.00	13.00	1065.97	0.00	0.00	6.52	-2.04
8.75in Open Hole	1066.00	7522.39	6456.39	1065.97	7135.00	6.52	-2.04	685.93	-121.51
7in Casing Intermediate	13.00	7522.39	7509.39	13.00	7135.00	0.00	0.00	685.93	-121.51
6.125in Open Hole	7522.39	12039.54	4517.15	7135.00	7190.00	685.93	-121.51	501.25	-4624.26
4.5in Casing Production	13.00	12039.54	12026.54	13.00	7190.00	0.00	0.00	501.25	-4624.26

TARGETS									
Name	MD [ft]	TVD [ft]	North [ft]	East [ft]	Grid East [US ft]	Grid North [US ft]	Latitude	Longitude	Shape
ELLIOTT 5C-18HZ BHL ON PLAT (1655'FNL & 50'FWL, SEC. 18) REV-1		7190.00	571.25	-4624.26	3155921.38	1326817.04	40°13'44.987"N	104°56'29.627"W	point
1) ELLIOTT 5C-18HZ BHL ON PLAT (1725'FNL & 50'FWL, SEC. 18) REV-2	12039.54	7190.00	501.25	-4624.26	3155921.83	1326747.04	40°13'44.295"N	104°56'29.627"W	point
ELLIOTT, KARL UNIT 1 (270' RADIUS)		7190.00	491.82	-926.80	3159619.11	1326761.59	40°13'44.206"N	104°55'41.956"W	circle
ELLIOTT 5C-18HZ LAND BOX		7200.00	0.00	0.00	3160549.04	1326275.81	40°13'39.346"N	104°55'30.007"W	polygon
ELLIOTT, KARL UNIT 1 (500' RADIUS)		7200.00	491.78	-926.77	3159619.14	1326761.55	40°13'44.206"N	104°55'41.956"W	circle
ELLIOTT 5C-18HZ SECTION 18 LINES		7210.00	0.00	0.00	3160549.04	1326275.81	40°13'39.346"N	104°55'30.007"W	polygon

SURVEY PROGRAM - Ref Wellbore: ELLIOTT 5C-18HZ PWB Ref Wellpath: ELLIOTT 5C-18HZ (REV-A.0) PWP				
Start MD [ft]	End MD [ft]	Positional Uncertainty Model	Log Name/Comment	Wellbore
13.00	993.00	Generic gyro - continuous (Standard)		ELLIOTT 5C-18HZ AWB
993.00	7522.39	NaviTrak (IFR)		ELLIOTT 5C-18HZ PWB
7522.39	12039.54	NaviTrak (IFR)		ELLIOTT 5C-18HZ PWB



# Planned Wellpath Report

ELLIOTT 5C-18HZ (REV-A.0) PWP

Page 6 of 6



## REFERENCE WELLPATH IDENTIFICATION

Operator	KERR-MCGEE OIL & GAS ONSHORE LP	Slot	SLOT#05 ELLIOTT 5C-18HZ (2040'FNL & 487'FEL, SEC.18)
Area	COLORADO	Well	ELLIOTT 5C-18HZ
Field	WELD COUNTY (KERR MCGEE)	Wellbore	ELLIOTT 5C-18HZ PWB
Facility	SEC.18-T3N-R67W		

## WELLPATH COMMENTS

MD [ft]	Inclination [°]	Azimuth [°]	TVD [ft]	Comment
13.00	0.000	0.010	13.00	TIE-ON
113.00	0.530	0.010	113.00	BEGIN GYRO SURVEYS
3541.90	10.000	38.207	3527.00	PARKMAN
4002.90	10.000	38.207	3981.00	SUSSEX
6884.41	26.677	288.730	6812.00	SHARON SPRINGS
6953.72	33.322	284.766	6872.00	NBRR
7021.01	39.858	282.072	6926.00	N470_B_CK
7105.90	48.168	279.569	6987.00	N700_C_CK
7365.56	73.781	274.609	7112.00	FRHS
7480.78	85.184	272.919	7133.00	CDLL