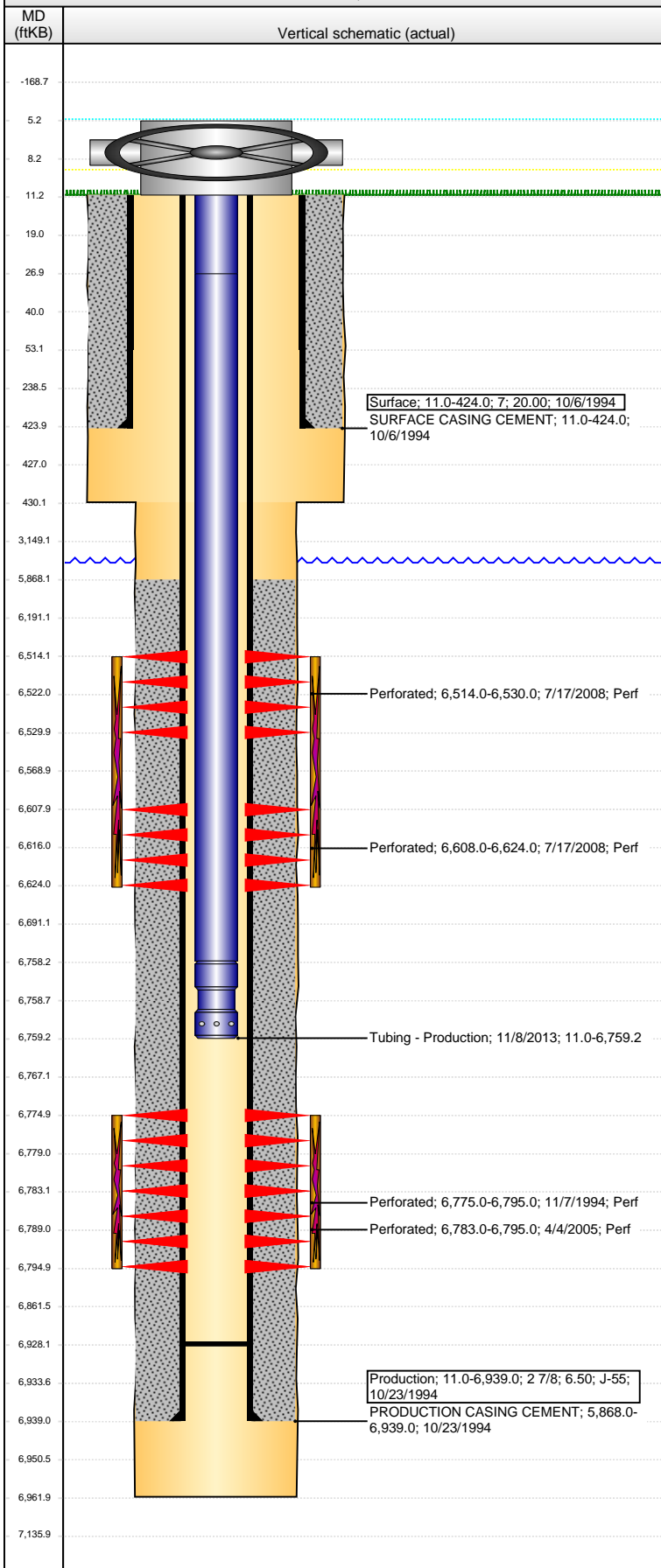


**Well Name:** UPV 27-04G3

VERTICAL - ORIGINAL HOLE, 3/27/2014 10:53:13 AM



## Well Header

API 05-123-18633	Business Unit WATTENBERG	District 15	Well Config VERTICAL
Original KB Elevation (ft) 4,757.00	KB - GL / MSL (ftKB) 11.00	Spud Date 10/6/1994	P & A Date
Comment			

## Directions To Well

WCR 67 & WCR 68, E 0.2, S 1.3, W 0.2 INTO LOCATION.

## Congressional Location

Quarter 1	Quarter 2	Quarter 3 NW	Quarter 4 NW	Section 27	Township 6 N	Twnshp N...	Range 63	Rng E/W Dir W
-----------	-----------	-----------------	-----------------	---------------	-----------------	-------------	-------------	------------------

## Bottom Hole Location

North-South Distance (ft)	From N or S Line	East-West Distance (ft)	From E or W Line
---------------------------	------------------	-------------------------	------------------

## Plug Back Total Depths

Date	Depth (ftKB)	Method	Com
10/23/1994	6,908.0	CASING TALLY	
4/22/2008	6,896.0	TAG	C/O WELL LAND TBG
8/4/2008	6,700.0	TUBING TALLY	CLEAN OUT SAND PLUG ACROSS NIOBRARA A...
11/7/2013	6,928.0	TAG	C/O SAND PLUG DOWN TO 6928

## Wellbore Sections

Section Des	Size (in)	Act Top, MD (ftKB)	Act Btm, MD (ftKB)
SURFACE	9 7/8	11.0	430.0
PRODUCTION	6 1/4	430.0	6,962.0

## Zone Statuses

Zone Name	Status Date	Status	Job
CODELL	12/8/1994	PR	DRILLING/COMPLETION - ORIGINAL, 10/6/1994 00:00
CODELL	6/2/2005	PR	RE-FRAC, 3/31/2005 00:00
NIOBRARA	8/8/2008	PR	RECOMPLETION, 7/14/2008 06:00

## Casing Strings

### Surface, 424.0ftKB

Casing Description	Run Date	OD (in)	Wt/Len (l...)	Grade	Top, MD (ft...)	MD (ftKB)
Surface	10/6/1994	7	17.00		11.0	424.0

### Production, 6,939.0ftKB

Casing Description	Run Date	OD (in)	Wt/Len (l...)	Grade	Top, MD (ft...)	MD (ftKB)
Production	10/23/1994	2 7/8	6.50	J-55	11.0	6,939.0

## Cement

Description	Top Depth (ftKB)	Bottom Depth (ftKB)
SURFACE CASING CEMENT	11.0	424.0
Description	Top Depth (ftKB)	Bottom Depth (ftKB)
PRODUCTION CASING CEMENT	5,868.0	6,939.0

## Tubing Components

Item Des	OD (in)	Wt (lb/ft)	Grade	Jts	Len (ft)	Btm (ftKB)	Btm (TVD) (ftKB)
Pup Joints	1.66	2.40	J-55	2	16.00	27.0	
Tubing	1.66	2.40	J-55	205	6,731.04	6,758.0	
Notched Seat Nipple	1.66			1	1.20	6,759.2	

## Perforation Data

Zone	Bnch/St g	Entered Shot Total	Top (ftKB)	Btm (ftKB)	Date
NIOBRARA, ORIGINAL HOLE	A	64	6,514.00	6,530.00	7/17/2008
NIOBRARA, ORIGINAL HOLE	B	64	6,608.00	6,624.00	7/17/2008
CODELL, ORIGINAL HOLE		80	6,775.00	6,795.00	11/7/1994
CODELL, ORIGINAL HOLE		48	6,783.00	6,795.00	4/4/2005

## Stimulations & Treatments

Date	Zone	Primary Job Type
11/11/1994	CODELL, ORIGINAL HOLE	DRILLING/COMPLETION - ORIGINAL
Technical Result	Tech Result Details	Tech Result Note

## Comment

Date	Zone	Primary Job Type
4/13/2005	CODELL, ORIGINAL HOLE	RE-FRAC
Technical Result	Tech Result Details	Tech Result Note

## Comment

**Well Name: UPV 27-04G3**

VERTICAL - ORIGINAL HOLE, 3/27/2014 10:53:16 AM

## Stimulations & Treatments

Date 7/28/2008	Zone NIOBRARA, ORIGINAL HOLE	Primary Job Type RECOMPLETION
Technical Result Success	Tech Result Details According to Plan	Tech Result Note
Comment FRAC THE NIOBRARA DOWN CASING - PRIOR TO TURNING ON FLOWBACK A LEAK BELOW THE FRAC VALVE WAS FOUND, WAIT TO TURN ON FLOWBACK UNTIL BJ HAS LEFT LOCATION		

## Other In Hole

Run Date	Des	OD (in)	Top (ftKB)	Btm (ftKB)

## Logs

Date	Type	Top, MD (ftKB)	Btm, MD (ftKB)
10/23/1994	Compensated Density	2,750.0	6,958.0
10/23/1994	Induction	433.0	6,960.0
11/7/1994	Cement Bond	5,770.0	6,882.0
8/23/2012	GYRO	11.0	6,500.0

