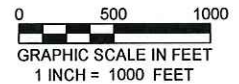
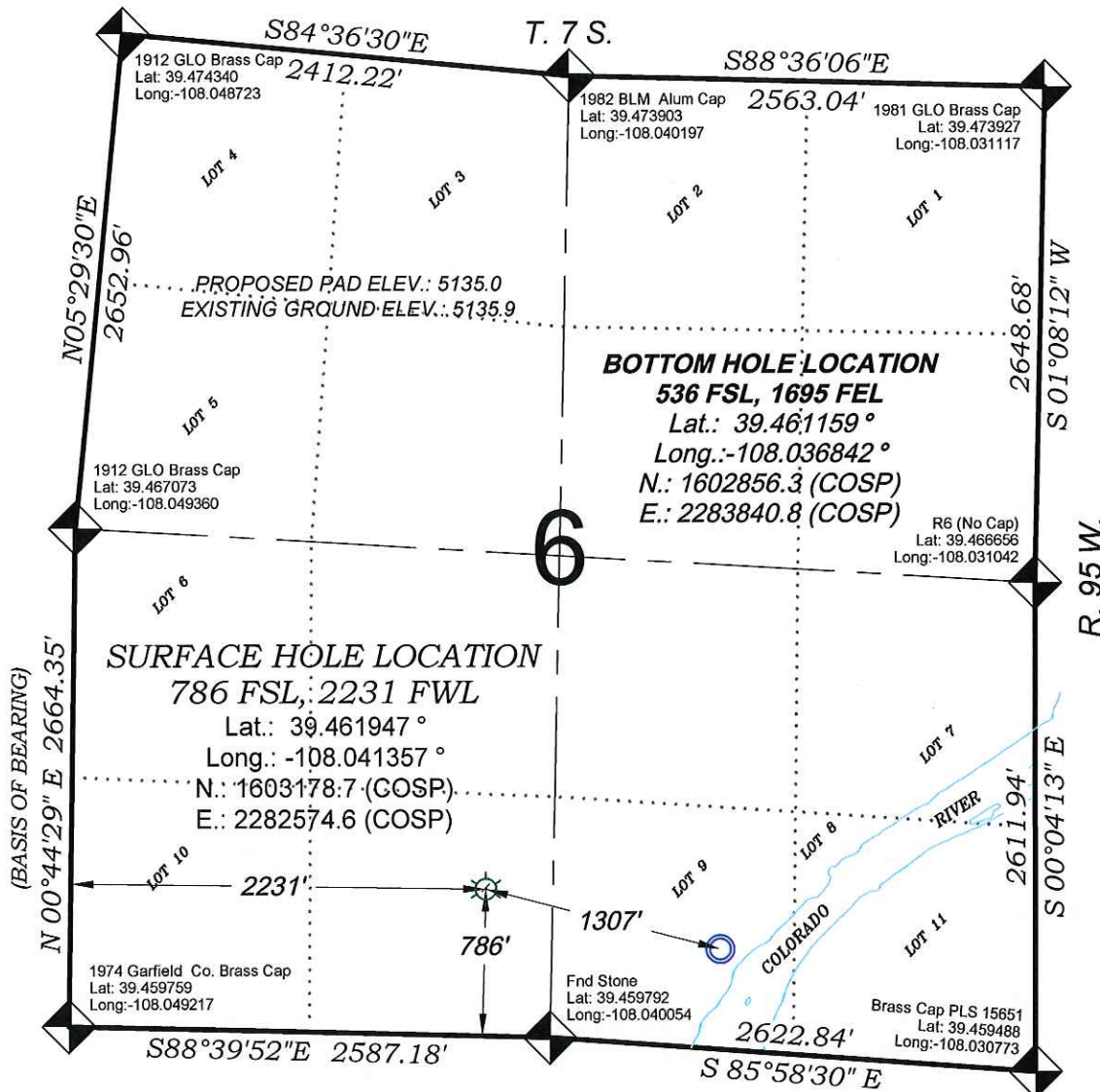


Hicks PA 444-6



- LEGEND -

FIELD LOCATED SECTION MONUMENTS AS DESCRIBED

FIELD SURVEYED WELL LOCATION

CALCULATED BOTTOM HOLE LOCATION

CALCULATED SECTION CORNER LOCATION

SURVEYORS STATEMENT

I, MICHAEL J. LANGHORNE, A REGISTERED LAND SURVEYOR IN THE STATE OF COLORADO DO HEREBY CERTIFY THAT THE SURVEY SHOWN HEREON WAS PREPARED UNDER MY DIRECT SUPERVISION AND HAS BEEN STAKED ON THE GROUND AS SHOWN ON THE PLAT AND CHECKING THAT THIS MAP IS A TRUE REPRESENTATION THEREOF.

MICHAEL J. LANGHORNE, COLORADO REGISTRATION NO. 36572
FOR AND ON BEHALF OF
BOOKCLIFF SURVEY SERVICES, INC.

REFERENCES

- 1) DEPENDENT RESURVEY T. 7 S., R. 95 W., 6th P.M (GLO PLAT)
- 2) U.S.G.S. QUAD: PARACHUTE, CO

Revised: 3/10/14

SURVEY DATE: 6/19/08
MAP DATE: 8/22/13
SCALE: 1" = 1000'
PLAT: 1 of 1
PROJECT: Valley

WELL LOCATION PLAT Prepared for:
WPXENERGY WPX Energy Rocky Mountain, LLC

SE1/4 SW1/4, SECTION 6
T. 7 S., R. 95 W. of the 6th. P.M.
GARFIELD COUNTY, COLORADO

