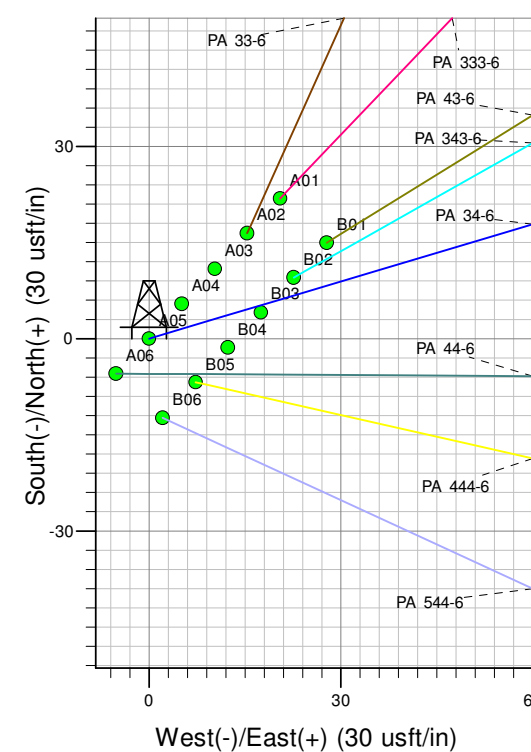
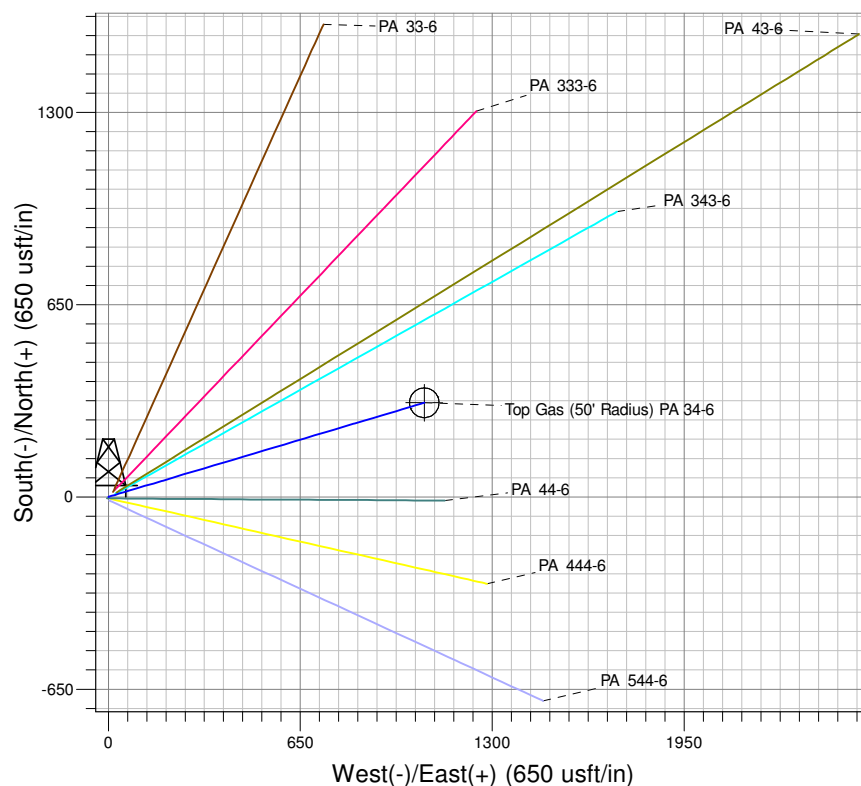
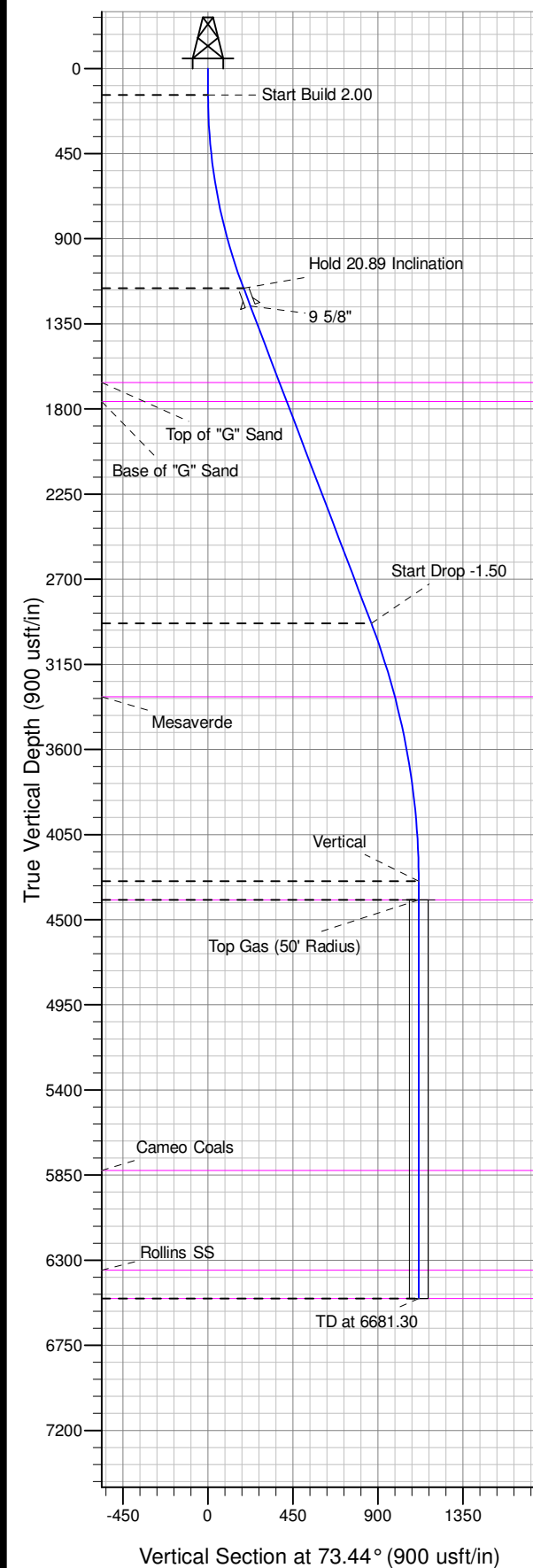




Well Name: PA 34-6
Surface Location: PA 24-6 Pad
North American Datum 1983 , US State Plane 1983 , Colorado Central Zone
Ground Elevation: 5135.00

+N/-S	+E/-W	Northing	Easting	Latitude	Longitude	Slot
0.00	0.00	1603185.70	2282567.50	39.46197	-108.04138	A05

KELLY BUSHING @ 5160.00usft (Aztec 1000 (25' RKB) kjs)



Project: PA 06-07S-095W
Site: PA 24-6 Pad
Well: PA 34-6
Design #4 26Feb14 kjs



Azimuths to True North
Magnetic North: 10.19°
Magnetic Field
Strength: 52088.0snT
Dip Angle: 65.66°
Date: 11/19/2012
Model: IGRF2010

ANNOTATIONS

TVD	MD	Inc	Azi	+N/-S	+E/-W	Vsect	Departure	Annotation
140.00	140.00	0.00	0.00	0.00	0.00	0.00	0.00	Start Build 2.00
1161.35	1184.33	20.89	73.44	53.66	180.44	188.25	188.25	Hold 20.89 Inclination
2934.20	3081.86	20.89	73.44	246.50	828.88	864.76	864.76	Start Drop -1.50
4296.00	4474.30	0.00	0.00	318.05	1069.47	1115.76	1115.76	Vertical
4396.00	4574.30	0.00	0.00	318.05	1069.47	1115.76	1115.76	Top Gas
6503.00	6681.30	0.00	0.00	318.05	1069.47	1115.76	1115.76	TD at 6681.30

PICEANCE VLY NAD 83

PA 06-07S-095W

PA 24-6 Pad

PA 34-6 - Slot A05

Wellbore #1

Plan: Design #4 26Feb14 kjs

Standard Planning Report - Geographic

13 March, 2014

WPX
Planning Report - Geographic

Database:	COMPASS-PICEANCE	Local Co-ordinate Reference:	Well PA 34-6 - Slot A05
Company:	PICEANCE VLY NAD 83	TVD Reference:	KELLY BUSHING @ 5160.00usft (Aztec 1000 (25' RKB) kjs)
Project:	PA 06-07S-095W	MD Reference:	KELLY BUSHING @ 5160.00usft (Aztec 1000 (25' RKB) kjs)
Site:	PA 24-6 Pad	North Reference:	True
Well:	PA 34-6	Survey Calculation Method:	Minimum Curvature
Wellbore:	Wellbore #1		
Design:	Design #4 26Feb14 kjs		

Project	PA 06-07S-095W, Garfield County, CO, 06-07S-095W		
Map System:	US State Plane 1983	System Datum:	Mean Sea Level
Geo Datum:	North American Datum 1983		
Map Zone:	Colorado Central Zone		Using geodetic scale factor

Site	PA 24-6 Pad			
Site Position:		Northing:	1,603,207.00 usft	Latitude: 39.46203
From: Map		Easting:	2,282,588.60 usft	Longitude: -108.04131
Position Uncertainty:	0.00 usft	Slot Radius:	13.200 in	Grid Convergence: -1.603 °

Well	PA 34-6 - Slot A05			
Well Position	+N/-S	0.00 usft	Northing:	1,603,185.70 usft
	+E/-W	0.00 usft	Easting:	2,282,567.50 usft
Position Uncertainty	0.00 usft		Wellhead Elevation:	
			Ground Level:	5,135.00 usft

Wellbore	Wellbore #1				
Magnetics	Model Name	Sample Date	Declination (°)	Dip Angle (°)	Field Strength (nT)
	IGRF2010	11/19/2012	10.185	65.664	52,088

Design	Design #4 26Feb14 kjs			
Audit Notes:				
Version:	Phase:	PLAN	Tie On Depth:	0.00
Vertical Section:	Depth From (TVD) (usft)	+N/-S (usft)	+E/-W (usft)	Direction (°)
	0.00	0.00	0.00	73.44

Plan Sections										
Measured Depth (usft)	Inclination (°)	Azimuth (°)	Vertical Depth (usft)	+N/-S (usft)	+E/-W (usft)	Dogleg Rate (°/100usft)	Build Rate (°/100usft)	Turn Rate (°/100usft)	TFO (°)	Target
0.00	0.00	0.00	0.00	0.00	0.00	0.00	0.00	0.00	0.000	
140.00	0.00	0.00	140.00	0.00	0.00	0.00	0.00	0.00	0.000	
1,184.33	20.89	73.44	1,161.35	53.66	180.44	2.00	2.00	0.00	73.438	
3,081.86	20.89	73.44	2,934.20	246.50	828.88	0.00	0.00	0.00	0.000	
4,474.30	0.00	0.00	4,296.00	318.05	1,069.47	1.50	-1.50	0.00	180.000	
4,574.30	0.00	0.00	4,396.00	318.05	1,069.47	0.00	0.00	0.00	0.000	Top Gas (50' Radius)
6,681.30	0.00	0.00	6,503.00	318.05	1,069.47	0.00	0.00	0.00	0.000	

WPX
Planning Report - Geographic

Database:	COMPASS-PICEANCE	Local Co-ordinate Reference:	Well PA 34-6 - Slot A05
Company:	PICEANCE VLY NAD 83	TVD Reference:	KELLY BUSHING @ 5160.00usft (Aztec 1000 (25' RKB) kjs)
Project:	PA 06-07S-095W	MD Reference:	KELLY BUSHING @ 5160.00usft (Aztec 1000 (25' RKB) kjs)
Site:	PA 24-6 Pad	North Reference:	True
Well:	PA 34-6	Survey Calculation Method:	Minimum Curvature
Wellbore:	Wellbore #1		
Design:	Design #4 26Feb14 kjs		

Planned Survey										
Measured Depth (usft)	Inclination (°)	Azimuth (°)	Vertical Depth (usft)	+N/-S (usft)	+E/-W (usft)	Map Northing (usft)	Map Easting (usft)	Latitude	Longitude	
0.00	0.00	0.00	0.00	0.00	0.00	1,603,185.70	2,282,567.50	39.46197	-108.04139	
100.00	0.00	0.00	100.00	0.00	0.00	1,603,185.70	2,282,567.50	39.46197	-108.04139	
140.00	0.00	0.00	140.00	0.00	0.00	1,603,185.70	2,282,567.50	39.46197	-108.04139	
Start Build 2.00										
200.00	1.20	73.44	200.00	0.18	0.60	1,603,185.86	2,282,568.11	39.46197	-108.04138	
300.00	3.20	73.44	299.92	1.27	4.28	1,603,186.85	2,282,571.82	39.46197	-108.04137	
400.00	5.20	73.44	399.64	3.36	11.30	1,603,188.74	2,282,578.89	39.46198	-108.04135	
500.00	7.20	73.44	499.05	6.44	21.65	1,603,191.53	2,282,589.32	39.46198	-108.04131	
600.00	9.20	73.44	598.03	10.50	35.32	1,603,195.21	2,282,603.10	39.46200	-108.04126	
700.00	11.20	73.44	696.44	15.55	52.30	1,603,199.78	2,282,620.21	39.46201	-108.04120	
800.00	13.20	73.44	794.18	21.58	72.55	1,603,205.23	2,282,640.62	39.46203	-108.04113	
900.00	15.20	73.44	891.12	28.57	96.06	1,603,211.56	2,282,664.32	39.46204	-108.04104	
1,000.00	17.20	73.44	987.14	36.52	122.80	1,603,218.77	2,282,691.27	39.46207	-108.04095	
1,100.00	19.20	73.44	1,082.13	45.42	152.74	1,603,226.83	2,282,721.44	39.46209	-108.04084	
1,184.33	20.89	73.44	1,161.35	53.66	180.44	1,603,234.29	2,282,749.36	39.46211	-108.04075	
Hold 20.89 Inclination										
1,200.00	20.89	73.44	1,175.99	55.25	185.80	1,603,235.73	2,282,754.76	39.46212	-108.04073	
1,285.00	20.89	73.44	1,255.41	63.89	214.84	1,603,243.55	2,282,784.04	39.46214	-108.04062	
9 5/8"										
1,300.00	20.89	73.44	1,269.42	65.42	219.97	1,603,244.93	2,282,789.20	39.46215	-108.04061	
1,400.00	20.89	73.44	1,362.85	75.58	254.14	1,603,254.13	2,282,823.65	39.46217	-108.04048	
1,500.00	20.89	73.44	1,456.28	85.74	288.31	1,603,263.34	2,282,858.09	39.46220	-108.04036	
1,600.00	20.89	73.44	1,549.71	95.90	322.49	1,603,272.54	2,282,892.53	39.46223	-108.04024	
1,700.00	20.89	73.44	1,643.14	106.07	356.66	1,603,281.74	2,282,926.97	39.46226	-108.04012	
1,719.12	20.89	73.44	1,661.00	108.01	363.19	1,603,283.50	2,282,933.56	39.46226	-108.04010	
Top of "G" Sand										
1,800.00	20.89	73.44	1,736.57	116.23	390.83	1,603,290.94	2,282,961.41	39.46229	-108.04000	
1,826.15	20.89	73.44	1,761.00	118.89	399.77	1,603,293.35	2,282,970.42	39.46229	-108.03997	
Base of "G" Sand										
1,900.00	20.89	73.44	1,829.99	126.39	425.01	1,603,300.15	2,282,995.86	39.46231	-108.03988	
2,000.00	20.89	73.44	1,923.42	136.56	459.18	1,603,309.35	2,283,030.30	39.46234	-108.03976	
2,100.00	20.89	73.44	2,016.85	146.72	493.35	1,603,318.55	2,283,064.74	39.46237	-108.03964	
2,200.00	20.89	73.44	2,110.28	156.88	527.52	1,603,327.75	2,283,099.18	39.46240	-108.03952	
2,300.00	20.89	73.44	2,203.71	167.04	561.70	1,603,336.96	2,283,133.63	39.46242	-108.03940	
2,400.00	20.89	73.44	2,297.14	177.21	595.87	1,603,346.16	2,283,168.07	39.46245	-108.03927	
2,500.00	20.89	73.44	2,390.57	187.37	630.04	1,603,355.36	2,283,202.51	39.46248	-108.03915	
2,600.00	20.89	73.44	2,484.00	197.53	664.22	1,603,364.56	2,283,236.95	39.46251	-108.03903	
2,700.00	20.89	73.44	2,577.43	207.69	698.39	1,603,373.77	2,283,271.39	39.46254	-108.03891	
2,800.00	20.89	73.44	2,670.85	217.86	732.56	1,603,382.97	2,283,305.84	39.46256	-108.03879	
2,900.00	20.89	73.44	2,764.28	228.02	766.73	1,603,392.17	2,283,340.28	39.46259	-108.03867	
3,000.00	20.89	73.44	2,857.71	238.18	800.91	1,603,401.37	2,283,374.72	39.46262	-108.03855	
3,081.86	20.89	73.44	2,934.20	246.50	828.88	1,603,408.91	2,283,402.92	39.46264	-108.03845	
Start Drop -1.50										
3,100.00	20.61	73.44	2,951.16	248.33	835.04	1,603,410.57	2,283,409.12	39.46265	-108.03843	
3,200.00	19.11	73.44	3,045.20	258.02	867.61	1,603,419.34	2,283,441.95	39.46267	-108.03831	
3,300.00	17.61	73.44	3,140.11	267.00	897.81	1,603,427.47	2,283,472.39	39.46270	-108.03821	
3,400.00	16.11	73.44	3,235.80	275.27	925.61	1,603,434.96	2,283,500.41	39.46272	-108.03811	
3,488.39	14.79	73.44	3,321.00	281.98	948.19	1,603,441.04	2,283,523.16	39.46274	-108.03803	
Mesaverde										
3,500.00	14.61	73.44	3,332.23	282.82	951.01	1,603,441.80	2,283,526.01	39.46274	-108.03802	
3,600.00	13.11	73.44	3,429.31	289.65	973.98	1,603,447.98	2,283,549.16	39.46276	-108.03794	
3,700.00	11.61	73.44	3,526.99	295.76	994.50	1,603,453.51	2,283,569.84	39.46278	-108.03786	

WPX
Planning Report - Geographic

Database:	COMPASS-PICEANCE	Local Co-ordinate Reference:	Well PA 34-6 - Slot A05
Company:	PICEANCE VLY NAD 83	TVD Reference:	KELLY BUSHING @ 5160.00usft (Aztec 1000 (25' RKB) kjs)
Project:	PA 06-07S-095W	MD Reference:	KELLY BUSHING @ 5160.00usft (Aztec 1000 (25' RKB) kjs)
Site:	PA 24-6 Pad	North Reference:	True
Well:	PA 34-6	Survey Calculation Method:	Minimum Curvature
Wellbore:	Wellbore #1		
Design:	Design #4 26Feb14 kjs		

Planned Survey									
Measured Depth (usft)	Inclination (°)	Azimuth (°)	Vertical Depth (usft)	+N/-S (usft)	+E/-W (usft)	Map Northing (usft)	Map Easting (usft)	Latitude	Longitude
3,800.00	10.11	73.44	3,625.19	301.13	1,012.57	1,603,458.37	2,283,588.05	39.46279	-108.03780
3,900.00	8.61	73.44	3,723.86	305.77	1,028.17	1,603,462.57	2,283,603.77	39.46281	-108.03774
4,000.00	7.11	73.44	3,822.91	309.67	1,041.28	1,603,466.10	2,283,616.99	39.46282	-108.03770
4,100.00	5.61	73.44	3,922.30	312.83	1,051.91	1,603,468.97	2,283,627.70	39.46283	-108.03766
4,200.00	4.11	73.44	4,021.93	315.24	1,060.03	1,603,471.15	2,283,635.89	39.46283	-108.03763
4,300.00	2.61	73.44	4,121.76	316.92	1,065.66	1,603,472.67	2,283,641.56	39.46284	-108.03761
4,400.00	1.11	73.44	4,221.70	317.85	1,068.78	1,603,473.51	2,283,644.70	39.46284	-108.03760
4,474.30	0.00	0.00	4,296.00	318.05	1,069.47	1,603,473.70	2,283,645.40	39.46284	-108.03760
Vertical									
4,500.00	0.00	0.00	4,321.70	318.05	1,069.47	1,603,473.70	2,283,645.40	39.46284	-108.03760
4,574.30	0.00	0.00	4,396.00	318.05	1,069.47	1,603,473.70	2,283,645.40	39.46284	-108.03760
Top Gas - Approx. Top Gas									
4,600.00	0.00	0.00	4,421.70	318.05	1,069.47	1,603,473.70	2,283,645.40	39.46284	-108.03760
4,700.00	0.00	0.00	4,521.70	318.05	1,069.47	1,603,473.70	2,283,645.40	39.46284	-108.03760
4,800.00	0.00	0.00	4,621.70	318.05	1,069.47	1,603,473.70	2,283,645.40	39.46284	-108.03760
4,900.00	0.00	0.00	4,721.70	318.05	1,069.47	1,603,473.70	2,283,645.40	39.46284	-108.03760
5,000.00	0.00	0.00	4,821.70	318.05	1,069.47	1,603,473.70	2,283,645.40	39.46284	-108.03760
5,100.00	0.00	0.00	4,921.70	318.05	1,069.47	1,603,473.70	2,283,645.40	39.46284	-108.03760
5,200.00	0.00	0.00	5,021.70	318.05	1,069.47	1,603,473.70	2,283,645.40	39.46284	-108.03760
5,300.00	0.00	0.00	5,121.70	318.05	1,069.47	1,603,473.70	2,283,645.40	39.46284	-108.03760
5,400.00	0.00	0.00	5,221.70	318.05	1,069.47	1,603,473.70	2,283,645.40	39.46284	-108.03760
5,500.00	0.00	0.00	5,321.70	318.05	1,069.47	1,603,473.70	2,283,645.40	39.46284	-108.03760
5,600.00	0.00	0.00	5,421.70	318.05	1,069.47	1,603,473.70	2,283,645.40	39.46284	-108.03760
5,700.00	0.00	0.00	5,521.70	318.05	1,069.47	1,603,473.70	2,283,645.40	39.46284	-108.03760
5,800.00	0.00	0.00	5,621.70	318.05	1,069.47	1,603,473.70	2,283,645.40	39.46284	-108.03760
5,900.00	0.00	0.00	5,721.70	318.05	1,069.47	1,603,473.70	2,283,645.40	39.46284	-108.03760
6,000.00	0.00	0.00	5,821.70	318.05	1,069.47	1,603,473.70	2,283,645.40	39.46284	-108.03760
6,004.30	0.00	0.00	5,826.00	318.05	1,069.47	1,603,473.70	2,283,645.40	39.46284	-108.03760
Cameo Coals									
6,100.00	0.00	0.00	5,921.70	318.05	1,069.47	1,603,473.70	2,283,645.40	39.46284	-108.03760
6,200.00	0.00	0.00	6,021.70	318.05	1,069.47	1,603,473.70	2,283,645.40	39.46284	-108.03760
6,300.00	0.00	0.00	6,121.70	318.05	1,069.47	1,603,473.70	2,283,645.40	39.46284	-108.03760
6,400.00	0.00	0.00	6,221.70	318.05	1,069.47	1,603,473.70	2,283,645.40	39.46284	-108.03760
6,500.00	0.00	0.00	6,321.70	318.05	1,069.47	1,603,473.70	2,283,645.40	39.46284	-108.03760
6,531.30	0.00	0.00	6,353.00	318.05	1,069.47	1,603,473.70	2,283,645.40	39.46284	-108.03760
Rollins SS									
6,600.00	0.00	0.00	6,421.70	318.05	1,069.47	1,603,473.70	2,283,645.40	39.46284	-108.03760
6,681.30	0.00	0.00	6,503.00	318.05	1,069.47	1,603,473.70	2,283,645.40	39.46284	-108.03760
TD at 6681.30 - TD									

Design Targets									
Target Name	Dip Angle (°)	Dip Dir. (°)	TVD (usft)	+N/-S (usft)	+E/-W (usft)	Northing (usft)	Easting (usft)	Latitude	Longitude
- hit/miss target									
- Shape									
Top Gas (50' Radius) PA	0.00	0.00	4,396.00	318.05	1,069.47	1,603,473.70	2,283,645.40	39.46284	-108.03760
- plan hits target center									
- Circle (radius 50.00)									

WPX
Planning Report - Geographic

Database:	COMPASS-PICEANCE	Local Co-ordinate Reference:	Well PA 34-6 - Slot A05
Company:	PICEANCE VLY NAD 83	TVD Reference:	KELLY BUSHING @ 5160.00usft (Aztec 1000 (25' RKB) kjs)
Project:	PA 06-07S-095W	MD Reference:	KELLY BUSHING @ 5160.00usft (Aztec 1000 (25' RKB) kjs)
Site:	PA 24-6 Pad	North Reference:	True
Well:	PA 34-6	Survey Calculation Method:	Minimum Curvature
Wellbore:	Wellbore #1		
Design:	Design #4 26Feb14 kjs		

Casing Points					
Measured Depth (usft)	Vertical Depth (usft)	Name	Casing Diameter (in)	Hole Diameter (in)	
1,285.00	1,255.41	9 5/8"	9.625	12.250	

Formations						
Measured Depth (usft)	Vertical Depth (usft)	Name	Lithology	Dip (°)	Dip Direction (°)	
1,719.12	1,661.00	Top of "G" Sand				
1,826.15	1,761.00	Base of "G" Sand				
3,488.39	3,321.00	Mesaverde				
4,574.30	4,396.00	Approx. Top Gas				
6,004.30	5,826.00	Cameo Coals				
6,531.30	6,353.00	Rollins SS				
6,681.30	6,503.00	TD				

Plan Annotations					
Measured Depth (usft)	Vertical Depth (usft)	Local Coordinates			
		+N/-S (usft)	+E/-W (usft)	Comment	
140.00	140.00	0.00	0.00	Start Build 2.00	
1,184.33	1,161.35	53.66	180.44	Hold 20.89 Inclination	
3,081.86	2,934.20	246.50	828.88	Start Drop -1.50	
4,474.30	4,296.00	318.05	1,069.47	Vertical	
4,574.30	4,396.00	318.05	1,069.47	Top Gas	
6,681.30	6,503.00	318.05	1,069.47	TD at 6681.30	