

# EE3 LLC.

## SPICER-FRONTIER #3-32H ON EXISTING SPICER #3-32H PAD LOCATED IN JACKSON COUNTY, COLORADO SECTION 32, T7N, R80W, 6th P.M.

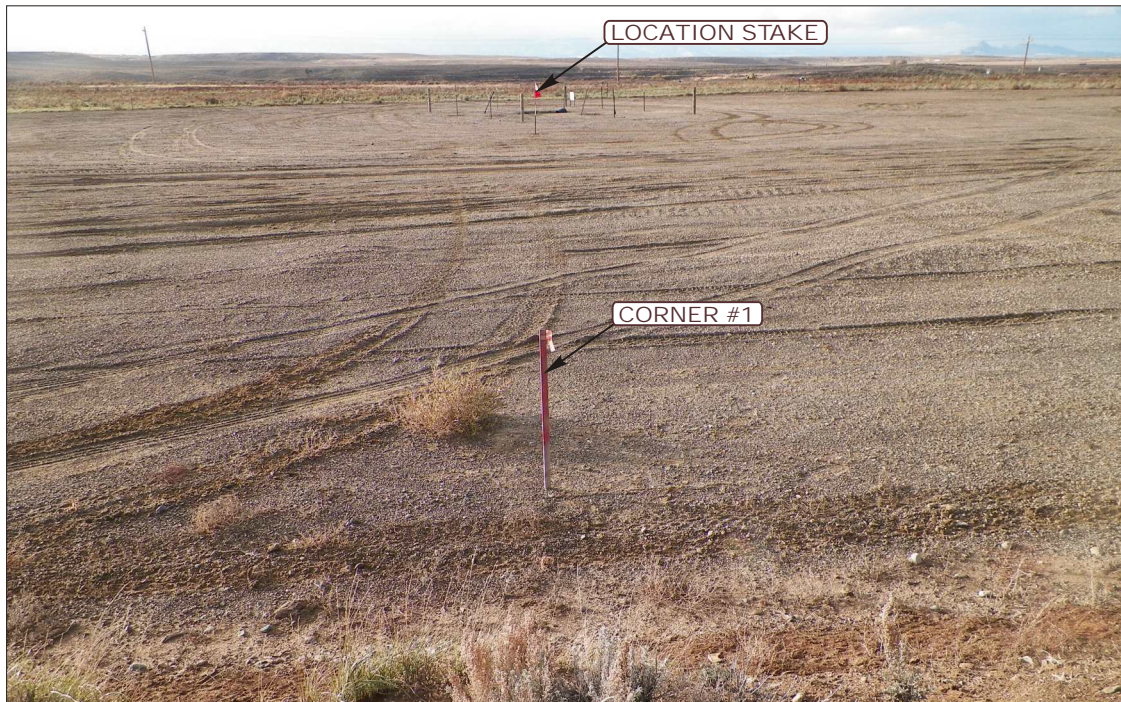


PHOTO: VIEW OF LOCATION STAKE FROM CORNER #1

CAMERA ANGLE: NORTHWESTERLY



PHOTO: VIEW FROM BEGINNING OF EXISTING ACCESS

CAMERA ANGLE: SOUTHWESTERLY



- Since 1964 -



Uintah Engineering & Land Surveying  
85 South 200 East Vernal, Utah 84078  
(435) 789-1017 \* FAX (435) 789-1813

LOCATION PHOTOS

10 16 13  
MONTH DAY YEAR

PHOTO

P1

TAKEN BY: D.S

DRAWN BY: J.C.

REVISED: 00-00-00



# EE3 LLC.

## SPICER-FRONTIER #3-32H ON EXISTING SPICER #3-32H PAD LOCATED IN JACKSON COUNTY, COLORADO SECTION 32, T7N, R80W, 6th P.M.



PHOTO: VIEW OF LOCATION STAKE

CAMERA ANGLE: NORTHERLY



PHOTO: VIEW OF LOCATION STAKE

CAMERA ANGLE: EASTERLY



- Since 1964 -



Uintah Engineering & Land Surveying  
85 South 200 East Vernal, Utah 84078  
(435) 789-1017 \* FAX (435) 789-1813

LOCATION PHOTOS

10 16 13  
MONTH DAY YEAR

TAKEN BY: D.S.

DRAWN BY: J.C.

REVISED: 00-00-00

PHOTO  
P2



# EE3 LLC.

## SPICER-FRONTIER #3-32H ON EXISTING SPICER #3-32H PAD LOCATED IN JACKSON COUNTY, COLORADO SECTION 32, T7N, R80W, 6th P.M.



PHOTO: VIEW OF LOCATION STAKE

CAMERA ANGLE: SOUTHERLY



PHOTO: VIEW OF LOCATION STAKE

CAMERA ANGLE: WESTERLY



- Since 1964 -

UELS

Uintah Engineering & Land Surveying

85 South 200 East Vernal, Utah 84078  
(435) 789-1017 \* FAX (435) 789-1813

LOCATION PHOTOS

10 16 13  
MONTH DAY YEAR

TAKEN BY: D.S.

DRAWN BY: J.C.

REVISED: 00-00-00

PHOTO  
P3