

EE3 LLC.

LOCATION DRAWING FOR

SPICER-FRONTIER #3-32H
ON EXISTING SPICER #03-32H PAD
SECTION 32, T7N, R80W, 6th P.M.
607' FSL 786' FWL

FIGURE #3

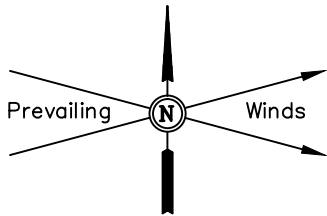
SCALE: 1" = 200'

DATE SURVEYED: 10-11-13

SURVEYED BY: DAVE SWANSON

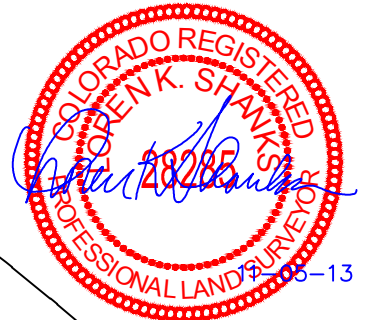
DATE DRAWN: 10-23-13

DRAWN BY: J.S.

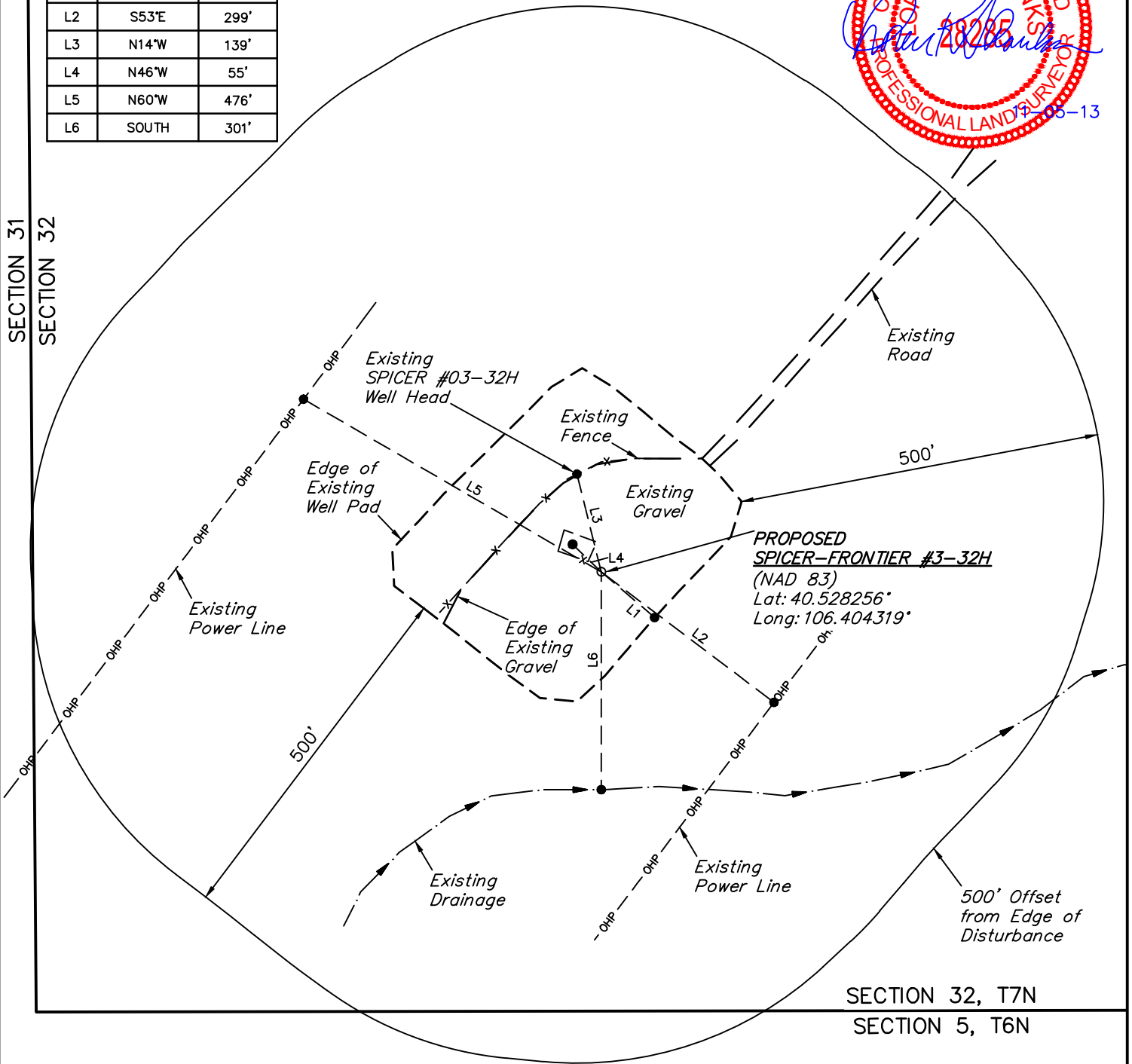


LINE TABLE

LINE	DIRECTION	LENGTH
L1	S49°E	97'
L2	S53°E	299'
L3	N14°W	139'
L4	N46°W	55'
L5	N60°W	476'
L6	SOUTH	301'



SECTION 31
SECTION 32



EE3 LLC.

SPICER-FRONTIER #3-32H ON EXISTING SPICER #03-32H PAD

SECTION 32, T7N, R80W, 6th P.M.

DATE: 10-23-13

WELL NAME: SPICER-FRONTIER #3-32H

VISIBLE IMPROVEMENTS FROM PROPOSED WELL

EXISTING FEATURE	DIRECTION	LENGTH
BUILDING	S71°W	2277'
BUILDING UNIT	S65°W	2738'
HIGH OCCUPANCY BUILDING UNIT	OVER 1 MILE	
DESIGNATED OUTSIDE ACTIVITY AREA	OVER 1 MILE	
PUBLIC ROAD	S50°W	672'
ABOVE GROUND UTILITY	S53°E	299'
RAILROAD	OVER 1 MILE	
PROPERTY LINE	SOUTH	607'