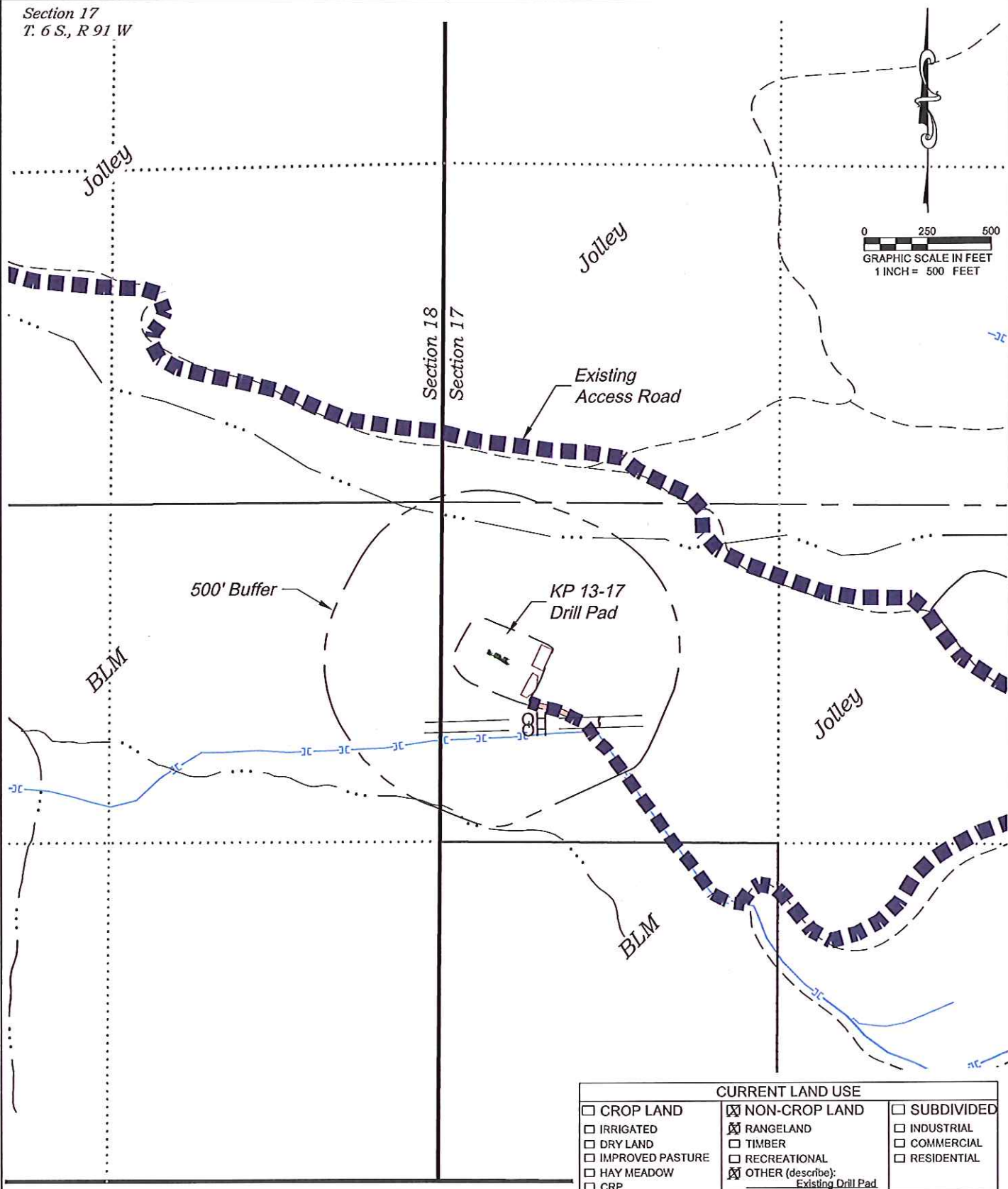


Section 17  
T. 6 S., R 91 W



CURRENT LAND USE		
<input type="checkbox"/> CROP LAND	<input checked="" type="checkbox"/> NON-CROP LAND	<input type="checkbox"/> SUBDIVIDED
<input type="checkbox"/> IRRIGATED	<input checked="" type="checkbox"/> RANGELAND	<input type="checkbox"/> INDUSTRIAL
<input type="checkbox"/> DRY LAND	<input type="checkbox"/> TIMBER	<input type="checkbox"/> COMMERCIAL
<input type="checkbox"/> IMPROVED PASTURE	<input type="checkbox"/> RECREATIONAL	<input type="checkbox"/> RESIDENTIAL
<input type="checkbox"/> HAY MEADOW	<input checked="" type="checkbox"/> OTHER (describe):	
<input type="checkbox"/> CRP	Existing Drill Pad	

REVISED: 1/27/14

Construction Plan Prepared for:  
**WPXENERGY** WPX Energy Rocky Mountain, LLC

KP 13-17 Drill Pad - Plat 6  
LOCATION

136 East Third Street  
Rifle, Colorado 81650  
Ph. (970) 625-2720  
Fax (970) 625-2773



**BOOKCLIFF**  
Survey Services, Inc.

SCALE: 1" = 500'  
DATE: 1/17/12  
PLAT: 6 of 7  
PROJECT: Kokopelli  
DFT: cws

*Visible Improvements to Well Head ( ft.)*

<i>Description</i>	<i>Building</i>	<i>Building Unit</i>	<i>High Occu. Building</i>	<i>DOAA</i>	<i>Public Road</i>	<i>Above Ground Utility</i>	<i>Railroad</i>	<i>Property Line</i>
KP 313-17	302° 4682	301° 4849	>5280	>5280	>5280	178° 240	>5280	270° 249
KP 412-17	302° 4660	301° 4827	>5280	>5280	>5280	178° 250	>5280	270° 229
KP 342-18	302° 4645	301° 4812	>5280	>5280	>5280	178° 257	>5280	270° 215
KP 42-18	302° 4615	301° 4782	>5280	>5280	>5280	178° 271	>5280	270° 188
KP 513-17	302° 4691	301° 4858	>5280	>5280	>5280	178° 228	>5280	270° 252
KP 543-18	302° 4683	301° 4850	>5280	>5280	>5280	178° 231	>5280	270° 245
KP 343-18	302° 4653	301° 4820	>5280	>5280	>5280	178° 245	>5280	270° 218
KP 43-18	302° 4646	301° 4813	>5280	>5280	>5280	178° 248	>5280	270° 211
KP 542-18	302° 4624	301° 4790	>5280	>5280	>5280	178° 258	>5280	270° 191

*Production Equipment*

Seperators	302° 4805	301° 4972	>5280	>5280	>5280	178° 85	>5280	270° 312
Tanks	301° 4777	300° 4946	>5280	>5280	>5280	178° 187	>5280	270° 355

REVISED: 1/27/14

Construction Plan Prepared for:  
**WPXENERGY** WPX Energy Rocky Mountain, LLC

KP 13-17 Drill Pad - Plat 6B  
LOCATION TABLE

136 East Third Street  
Rifle, Colorado 81650  
Ph. (970) 625-2720  
Fax (970) 625-2773



**BOOKCLIFF**  
Survey Services, Inc.

SCALE: NA  
DATE: 1/17/12  
PLAT: 6B of 7  
PROJECT: Kokopelli  
DFT: cws